

# CEMENT BOND LOG

Company Pioneer Natural Res.  
Well Hunter 22-17  
Field Purgatoire River  
County Las Animas  
State Colorado

Company Pioneer Natural Resources  
Well Hunter 22-17  
Field Purgatoire River  
County Las Animas  
State Colorado

Location: API # : 05 071 09885 00

SE/NW

SEC 17 TWP 33S RGE 67W

Other Services  
DEVI

Permanent Datum Ground Level Elevation 7740'  
Log Measured From Kelly Bushing 9' Above G L  
Drilling Measured From Kelly Bushing

Elevation  
K.B. 7749'  
D.F.  
G.L. 7740'

Date 11-15-11

Run Number	One
Depth Driller	2565'
Depth Logger	2530'
Bottom Logged Interval	2528'
Top Log Interval	Surf.
Open Hole Size	7 7/8"
Type Fluid	Water
Density / Viscosity	///
Max. Recorded Temp.	///
Estimated Cement Top	280'
Time Well Ready	3:00 P.M.
Time Logger on Bottom	3:30 P.M.
Equipment Number	440
Location	Trinidad
Recorded By	C. Sisneros
Witnessed By	C. Adam

Borehole Record				Tubing Record			
Run Number	Bit	From	To	Size	Weight	From	To

Casing Record	Size	Wgt/Ft	Top	Bottom
Surface String	8 5/8			897'
Prot. String				
Production String	5 1/2			TD
Liner				

<<< Fold Here >>>

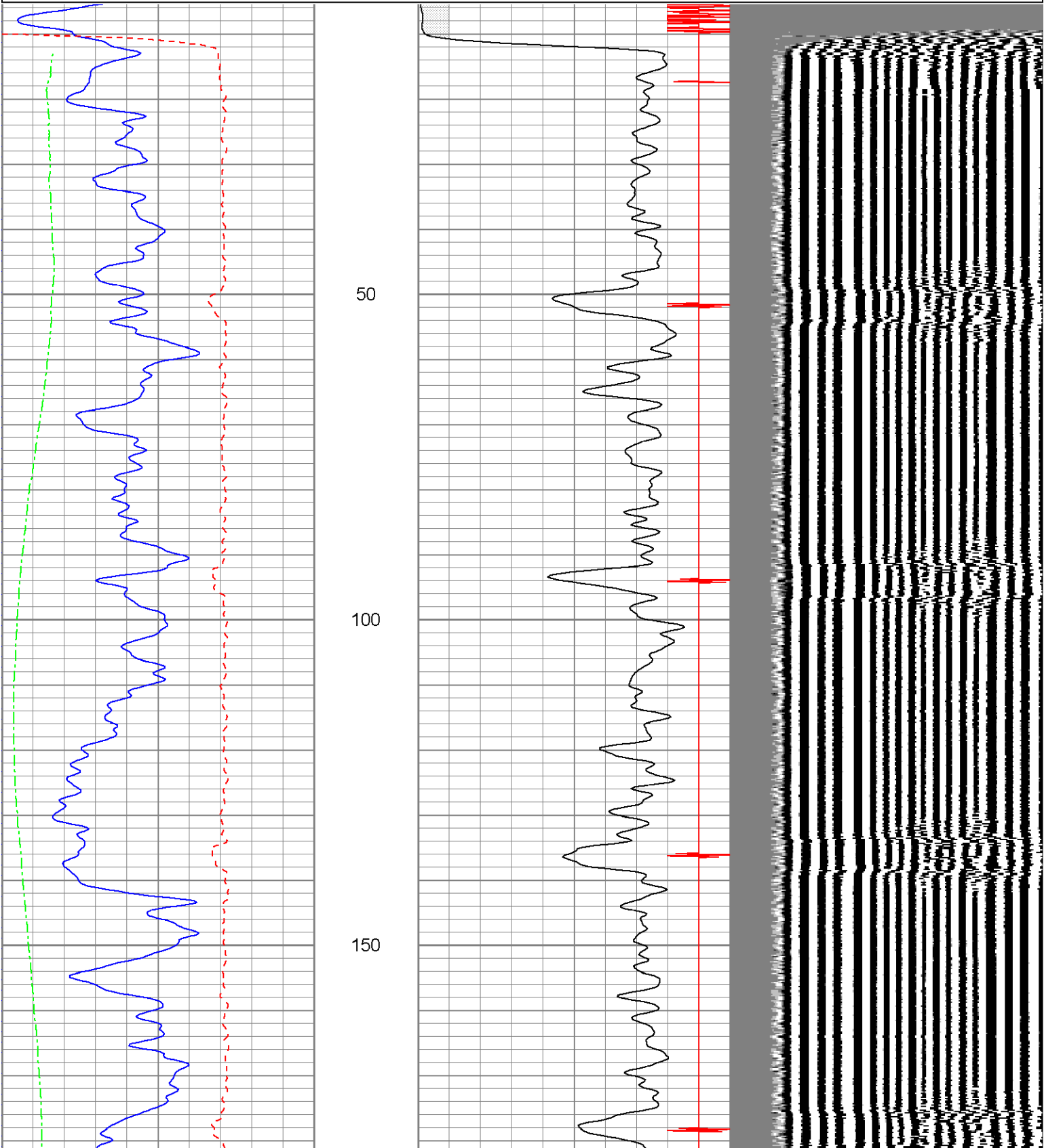
All interpretations are opinions based on inferences from electrical or other measurements and we cannot and do not guarantee the accuracy or correctness of any interpretation, and we shall not, except in the case of gross or willful negligence on our part, be liable or responsible for any loss, costs, damages, or expenses incurred or sustained by anyone resulting from any interpretation made by any of our officers, agents or employees. These interpretations are also subject to our general terms and conditions set out in our current Price Schedule.

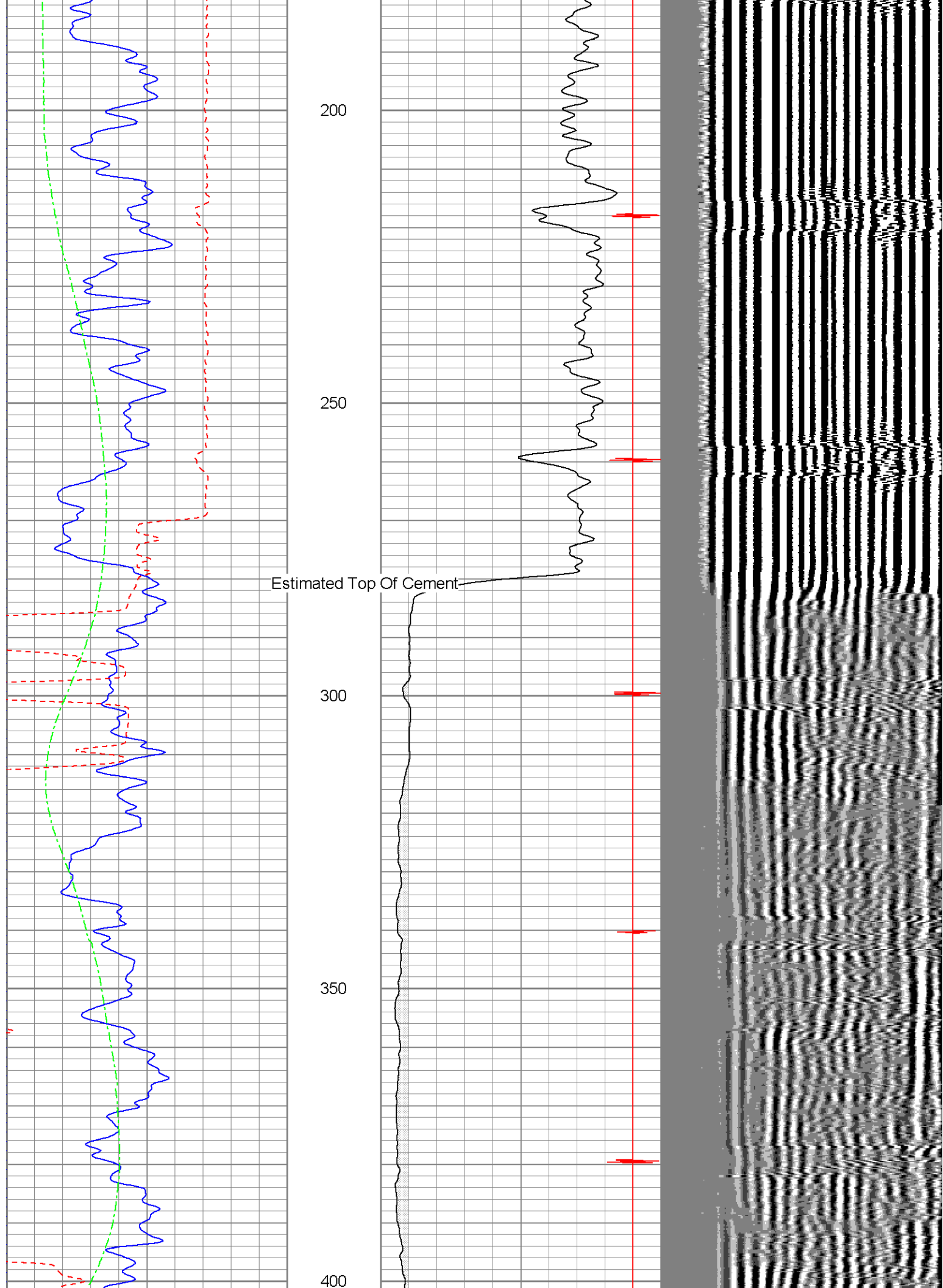
## Comments

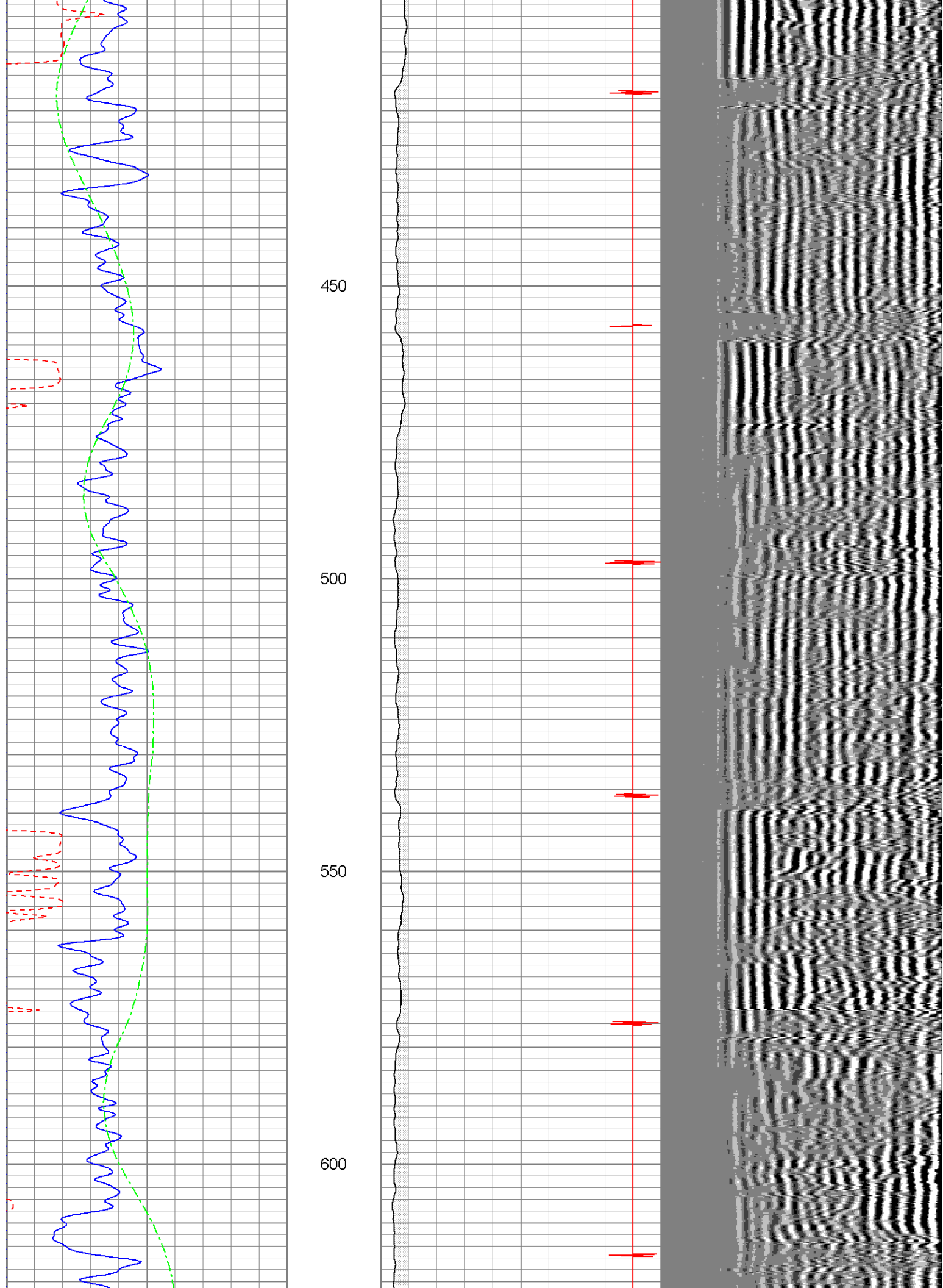
Rancho Escondido, stay right past dumpster, at T at top of hill go right, take third right, first right to location.

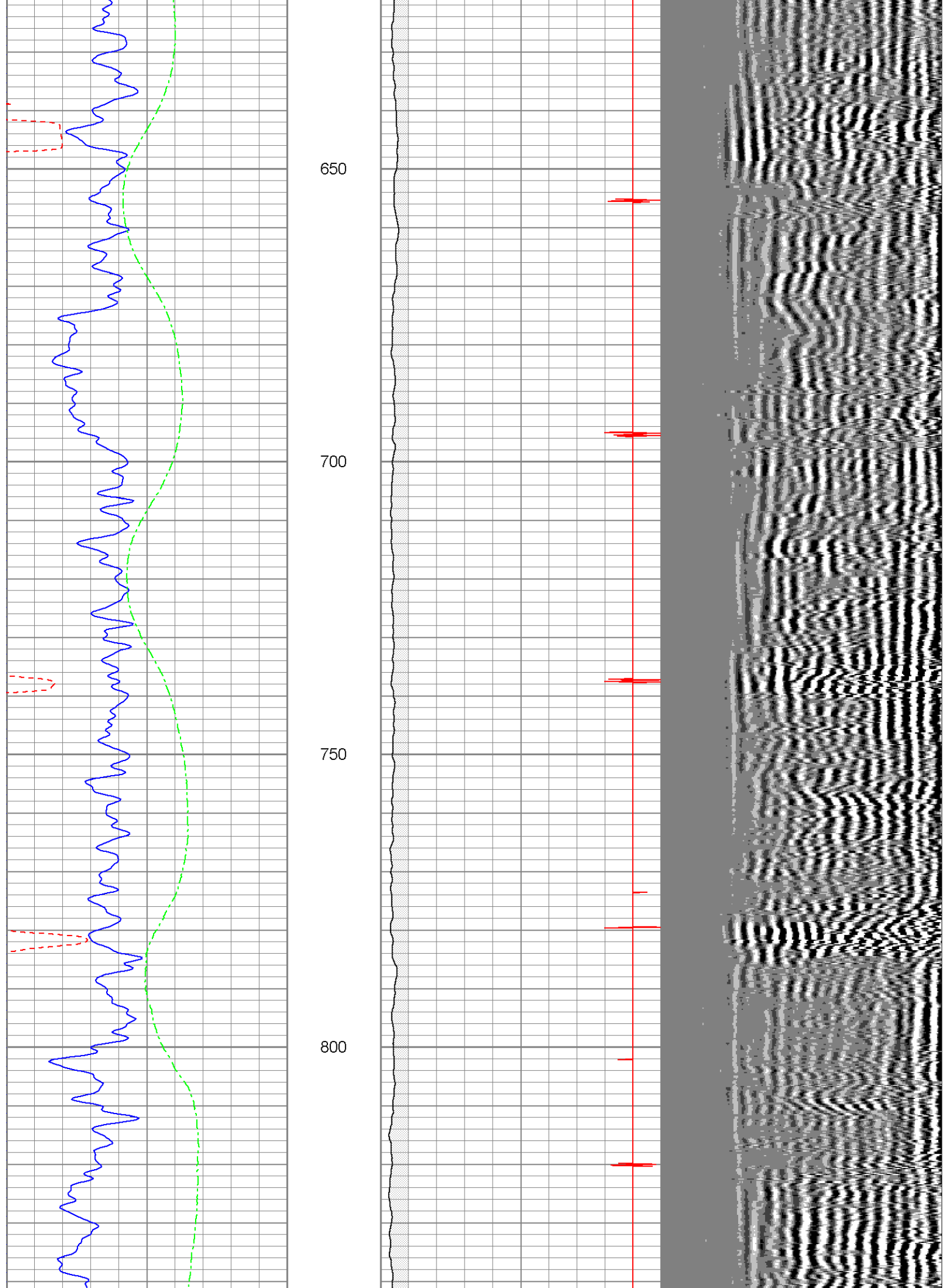
Database File: hunter111511b.db  
Dataset Pathname: pass2.1  
Presentation Format: cbl  
Dataset Creation: Tue Nov 15 17:11:40 2011 by Calc Open-Cased 071220  
Charted by: Depth in Feet scaled 1:240

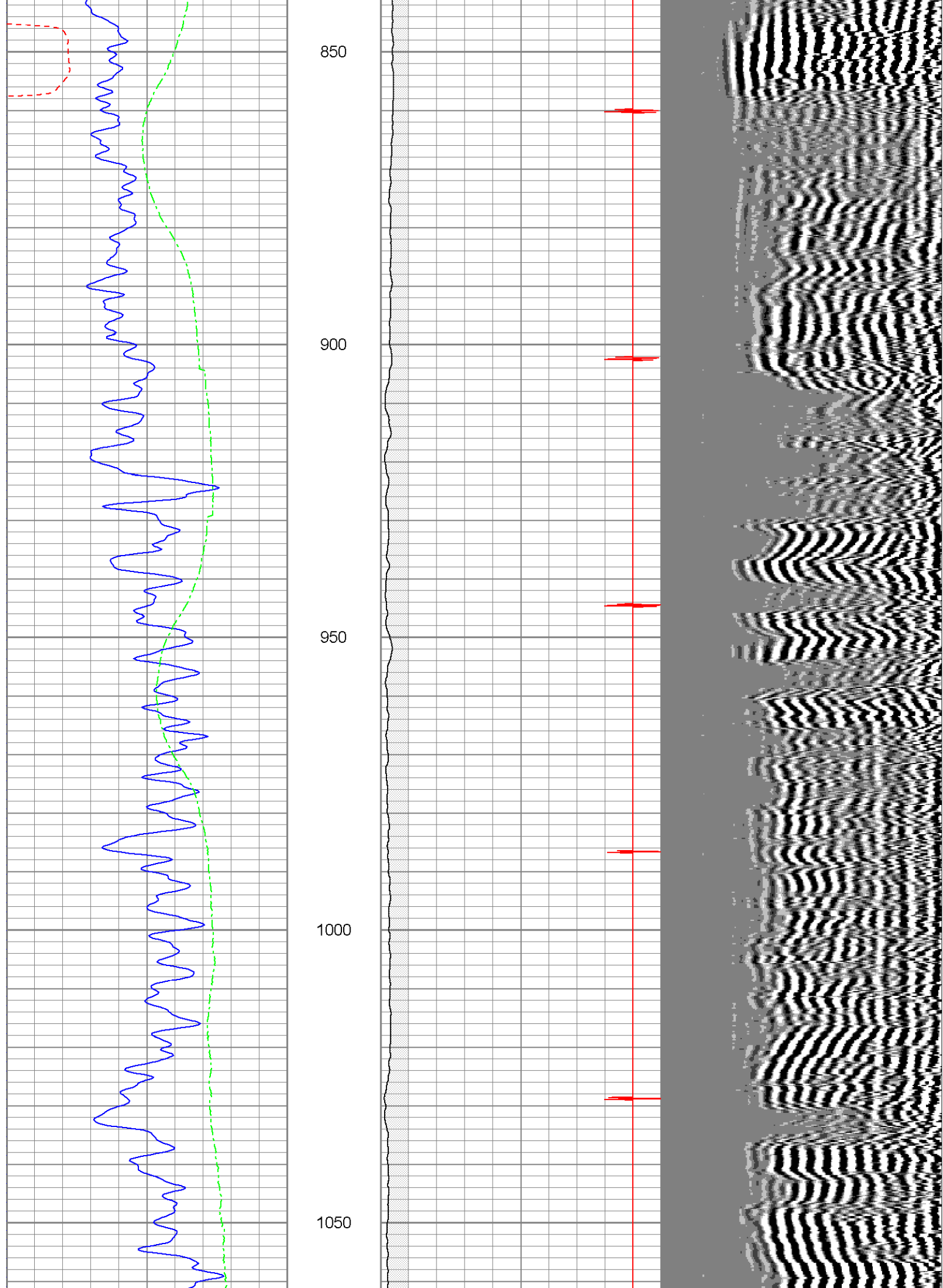
0	GR (GAPI)	200	18	CCL	-2	200	VDL	1200
200	GR (GAPI)	400	0	AMP3 (mV)	100			
400	TT3 (usec)	200						
0	DEVI (°)	10						



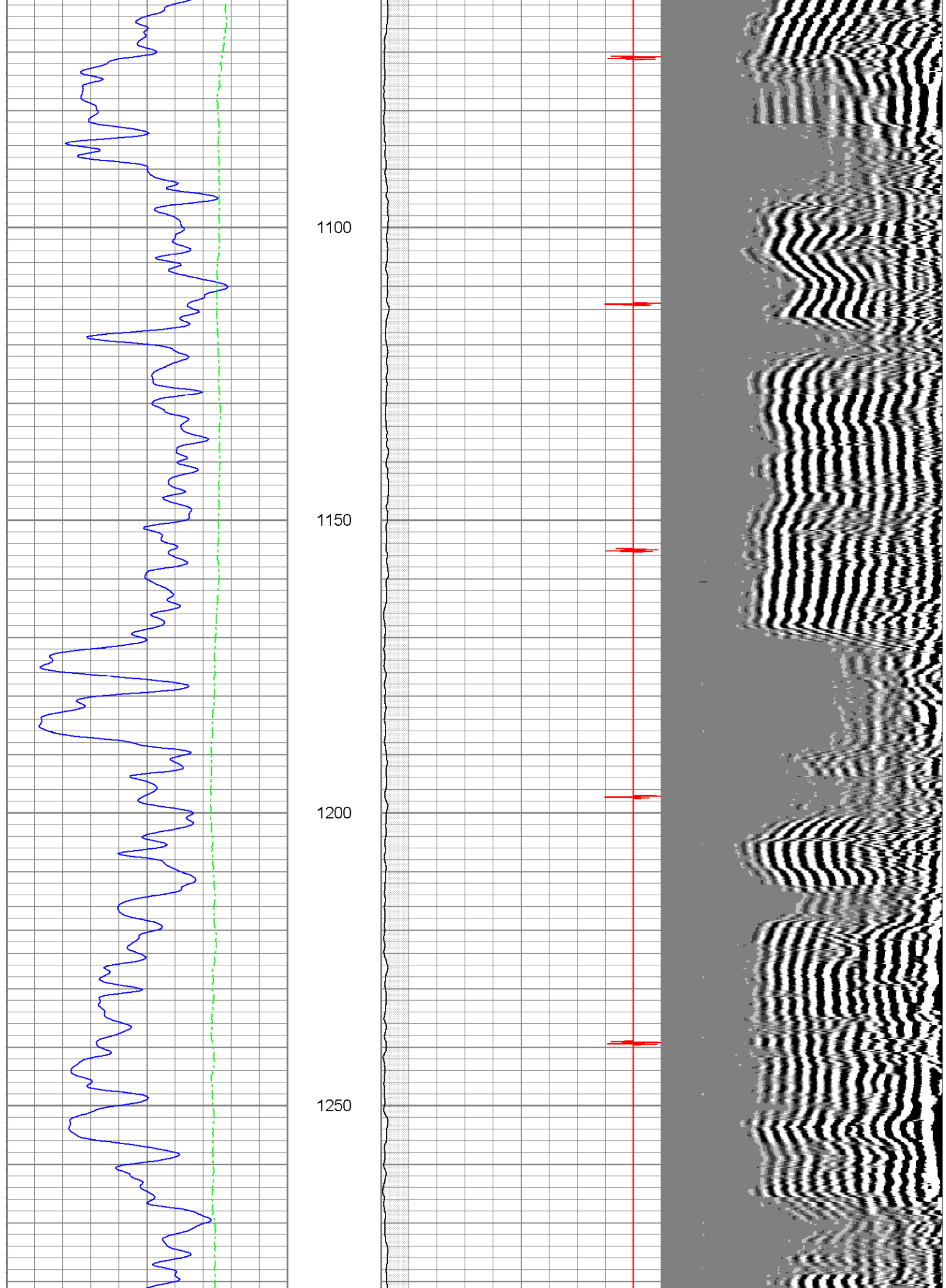


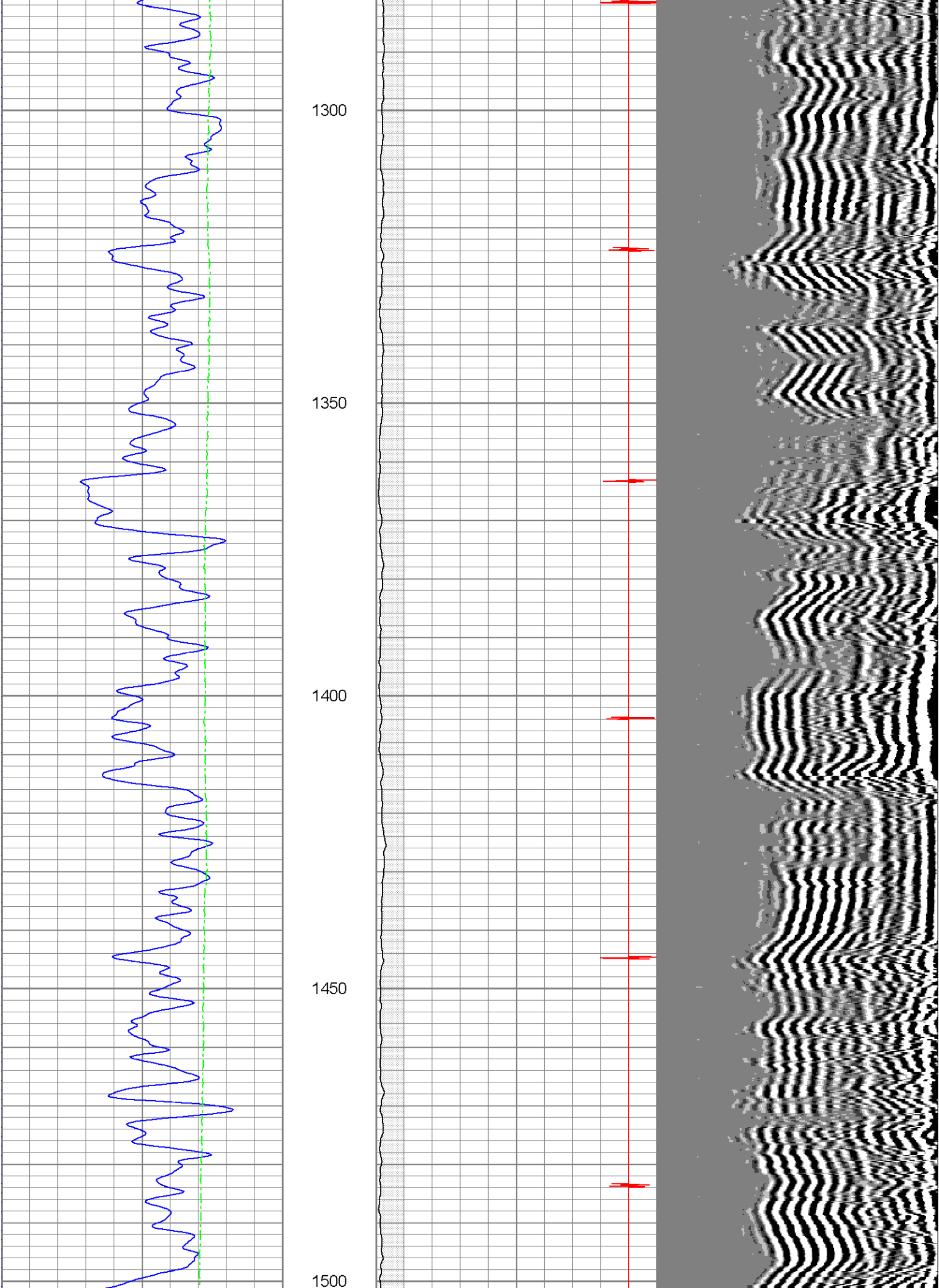




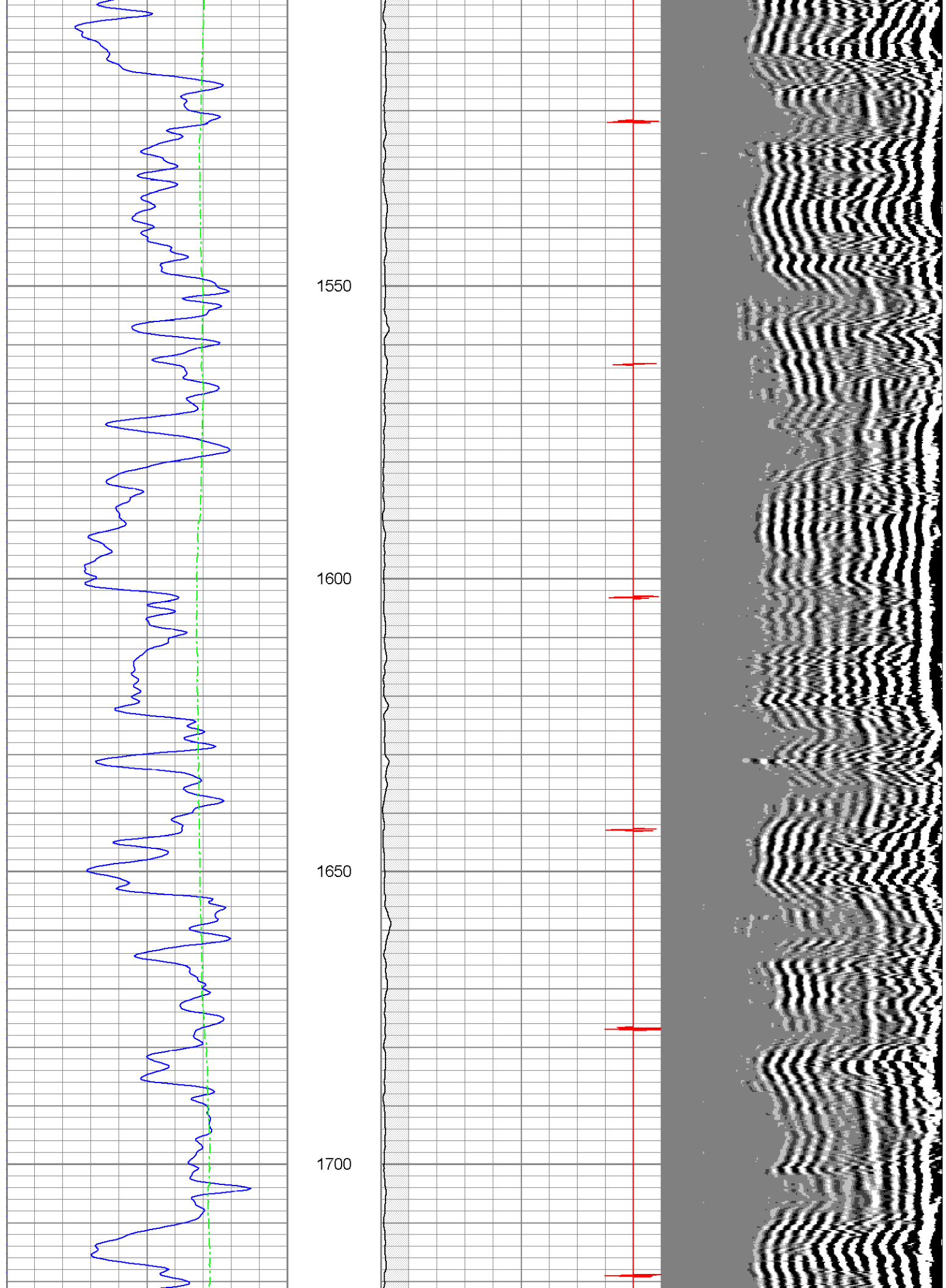


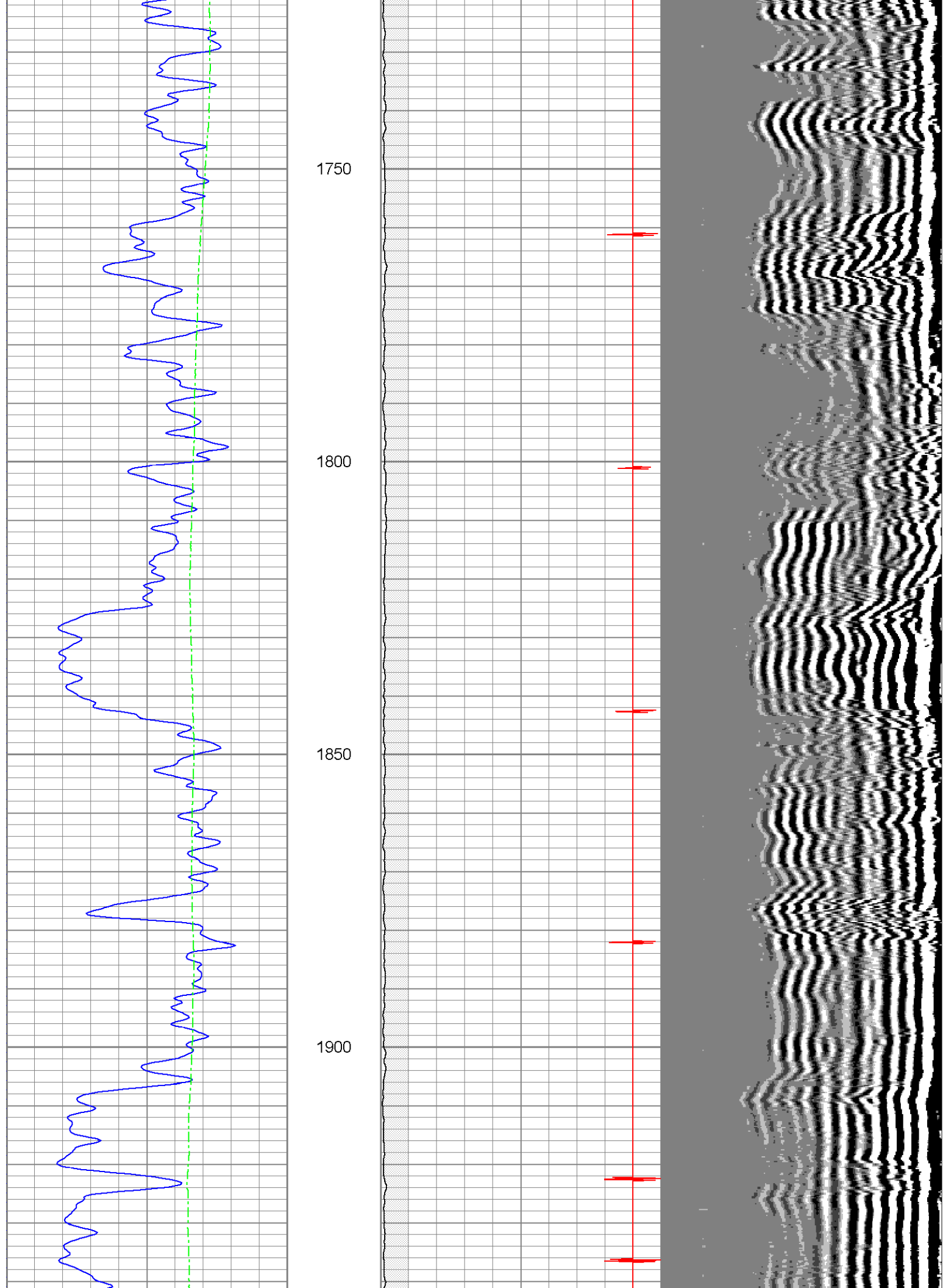


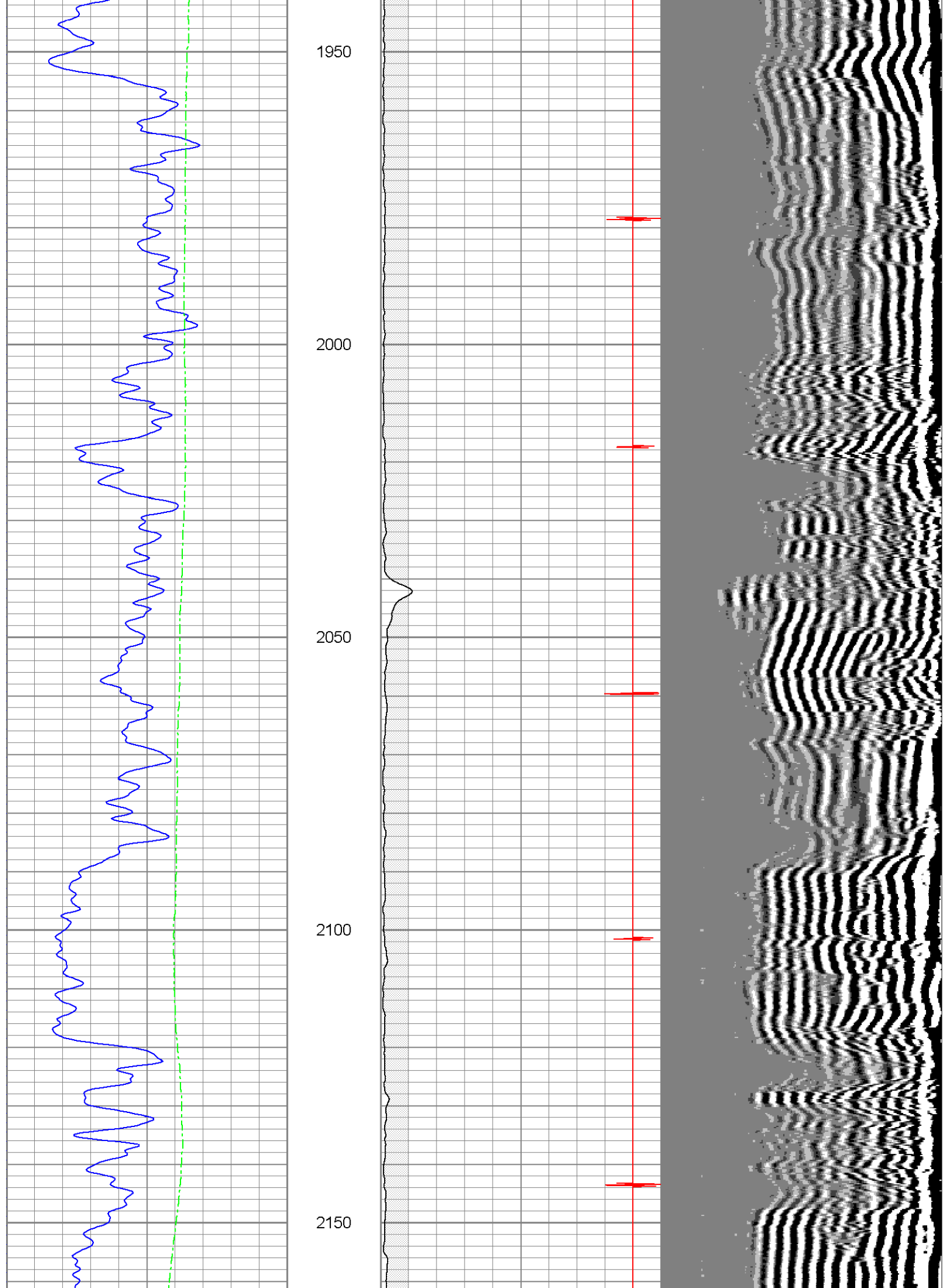


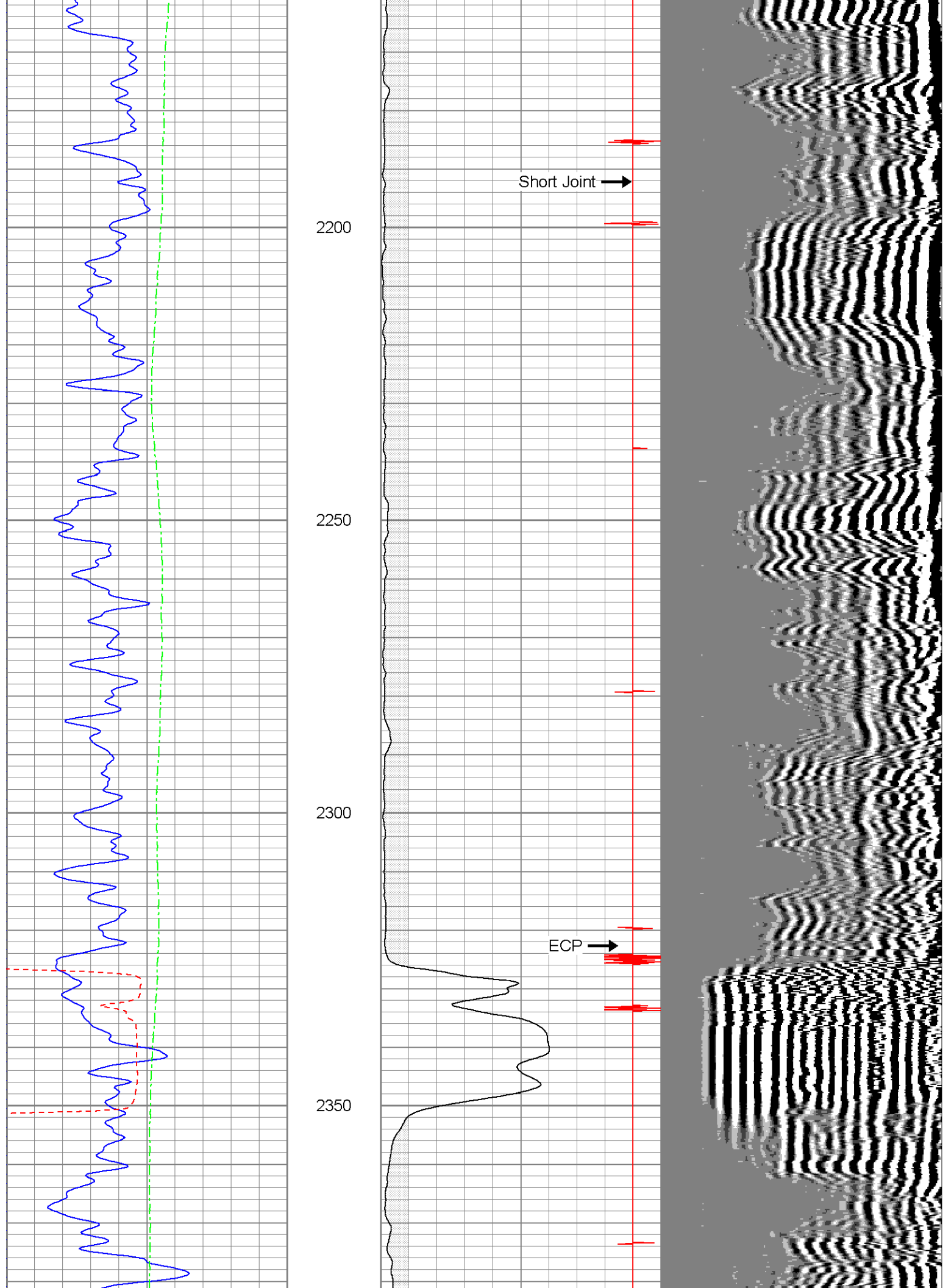


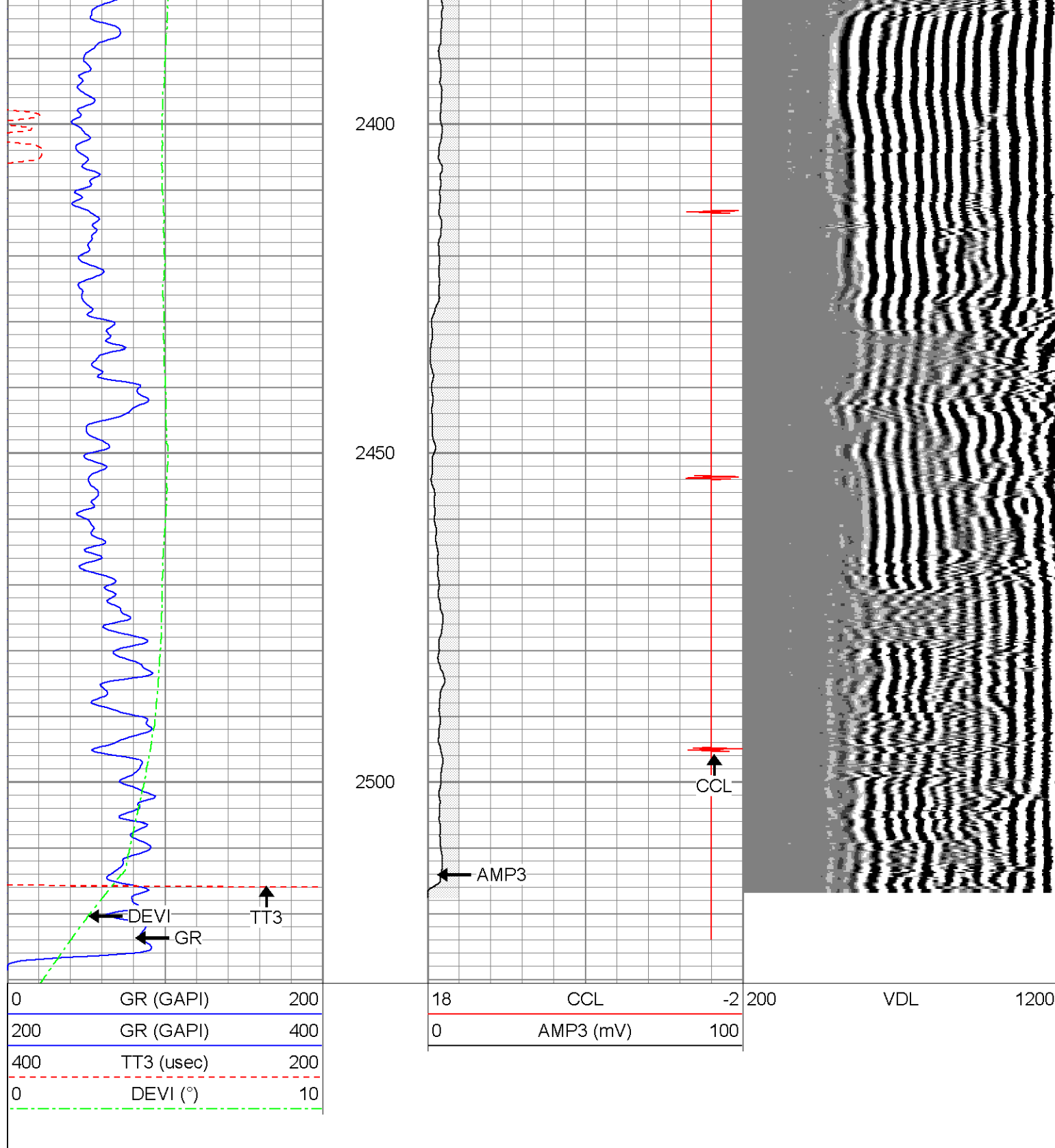














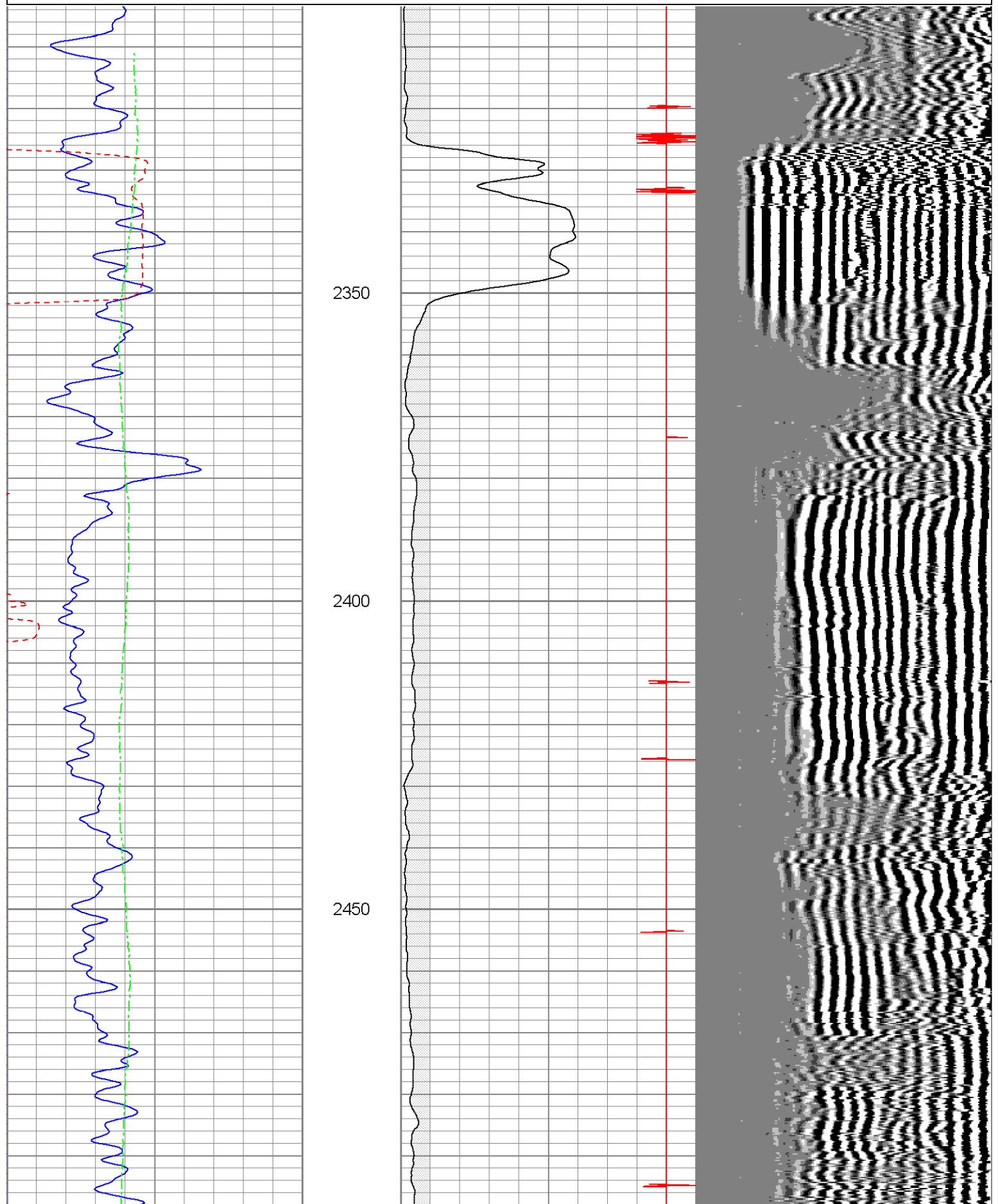
0	GR (GAPI)	200
200	GR (GAPI)	400
400	TT3 (usec)	200
0	DEVI (°)	10

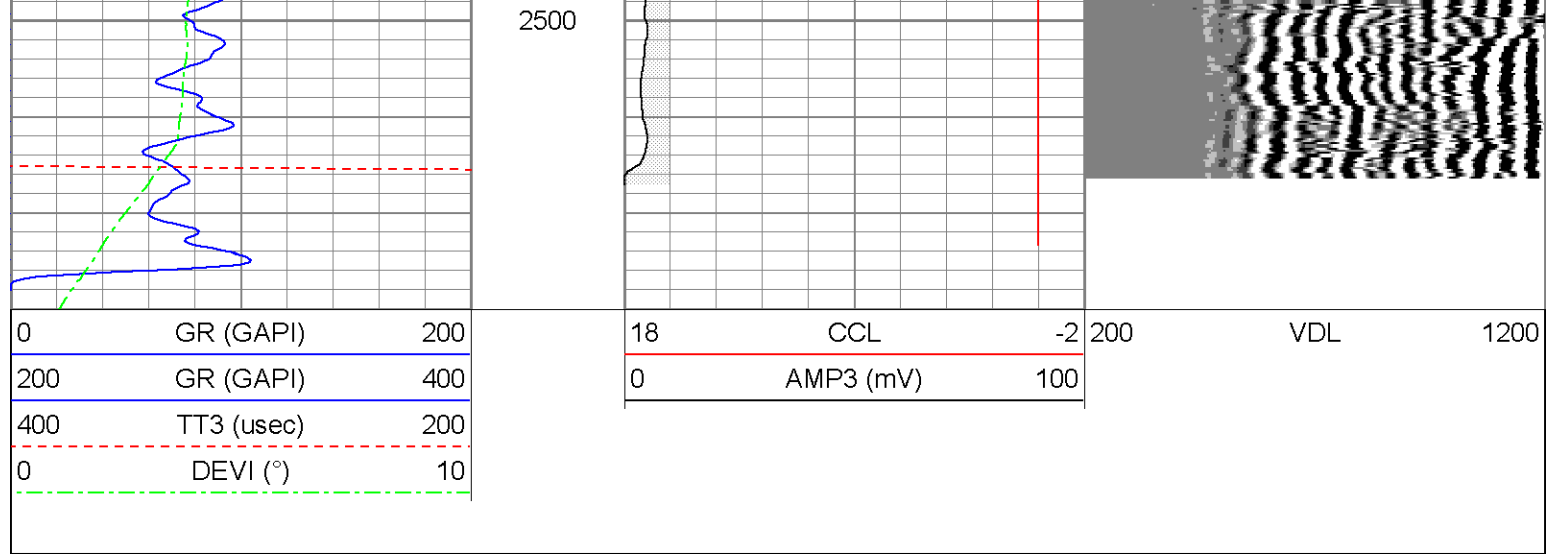
18	CCL	-2
0	AMP3 (mV)	100

200

VDL

1200





### Calibration Report

Database File: hunter111511b.db  
 Dataset Pathname: pass1  
 Dataset Creation: Tue Nov 15 15:39:37 2011 by Log Open-Cased 071220

### Gamma Ray Calibration Report

Serial Number: 080616  
 Tool Model: 275D\_INC  
 Performed: Tue Nov 15 14:55:34 2011

Calibrator Value: 1.0 GAPI

Background Reading: 0.0 cps  
 Calibrator Reading: 1.0 cps

Sensitivity: 1.0000 GAPI/cps

### Inclinometer Calibration Report

Performed: Tue Nov 15 14:55:36 2011

	Low Read.	High Read.	Low Ref.	High Ref.	
X Accelerometer	-3583.40	3594.20	-1.00	1.00	gee
Y Accelerometer	-3588.80	3532.80	-1.00	1.00	gee
Z Accelerometer					

### Cement Bond Log Calibration Report

Serial Number: 080201  
 Tool Model: PROBEDIITALCBL  
 Performed: Sat Oct 22 16:33:25 2011

Depth: 777.107 ft  
 Casing Diameter: 5.5 in

	3' Spacing	5' Spacing	
Signal Zero:	1	1	mV
Calibrated Amplitude:	85	85	mV
Reading at Signal Zero:	0.00725098	0.00693359	V
Reading in Free Pipe:	1.051	1.023	V

82.6718  
0.426788

[illegible]