

Compensated Density Neutron Log

Company	Pioneer Natural Resources	Company	Pioneer Natural Resources
Well	Hunter 22-17	Well	Hunter 22-17
Field	Purgatorie River	Field	Purgatorie River
County	Las Animas	County	Las Animas
State	CO	State	CO
Location:	APL #: 05-071-09885-00	Other Services	
SEC 17 TWP 33s RGE 67w	SE/NW	SIL	
Permanent Datum	Ground Level	Elevation	
Log Measured From	Kelly Bushing	K.B. 7747	
Drilling Measured From	Kelly Bushing	D.F. 7740	
		G.L. 7740	
Date	27Oct2011		
Run Number	one		
Depth Driller	2565		
Depth Logger	2564		
Bottom Logged Interval	2561		
Top Log Interval	875		
Casing Driller	897		
Casing Logger	897		
Bit Size	7 7/8		
Type Fluid in Hole	foam		
Density / Viscosity	//		
pH / Fluid Loss	//		
Source of Sample	//		
Rm @ Meas. Temp	//		
Rmf @ Meas. Temp	//		
Rmc @ Meas. Temp	//		
Source of Rmf / Rmc	//		
Rm @ BHT	//		
Time Circulation Stopped	8:30 pm		
Time Logger on Bottom	2am		
Maximum Recorded Temperature	//		
Equipment Number	590		
Location	Trinidad		
Recorded By	Patterson		
Witnessed By	B Vigil		

<<< Fold Here >>>

All interpretations are opinions based on inferences from electrical or other measurements and we cannot and do not guarantee the accuracy or correctness of any interpretation, and we shall not, except in the case of gross or willful negligence on our part, be liable or responsible for any loss, costs, damages, or expenses incurred or sustained by anyone resulting from any interpretation made by any of our officers, agents or employees. These interpretations are also subject to our general terms and conditions set out in our current Price Schedule.

Comments

Database File: hunter22-17.db
Dataset Pathname: pass2
Presentation Format: cdnl
Dataset Creation: Thu Oct 27 02:55:47 2011 by Log Open-Cased 110302
Charted by: Depth in Feet scaled 1:240

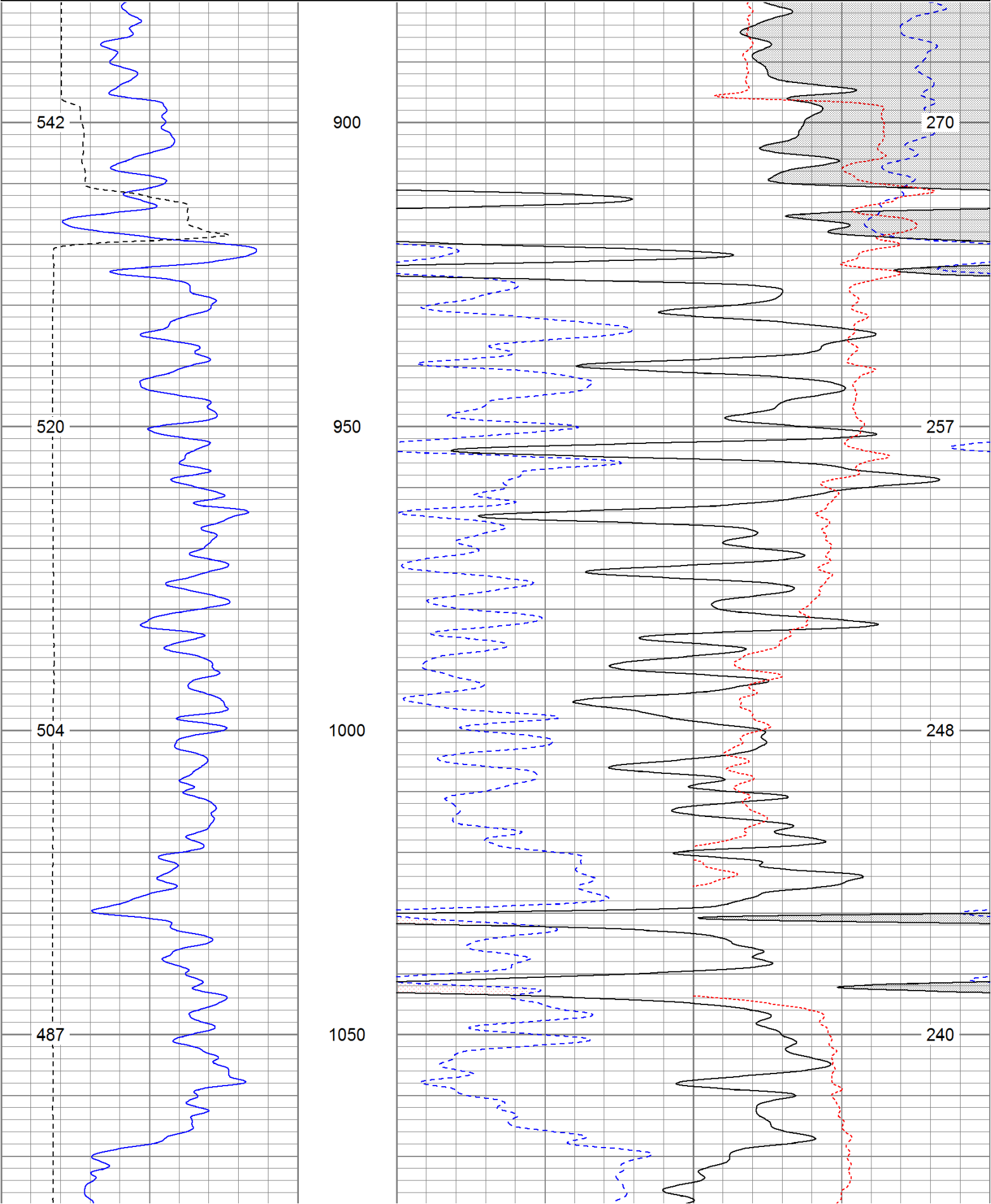
0	GR (GAPI)	200
6	DCAL (in)	16

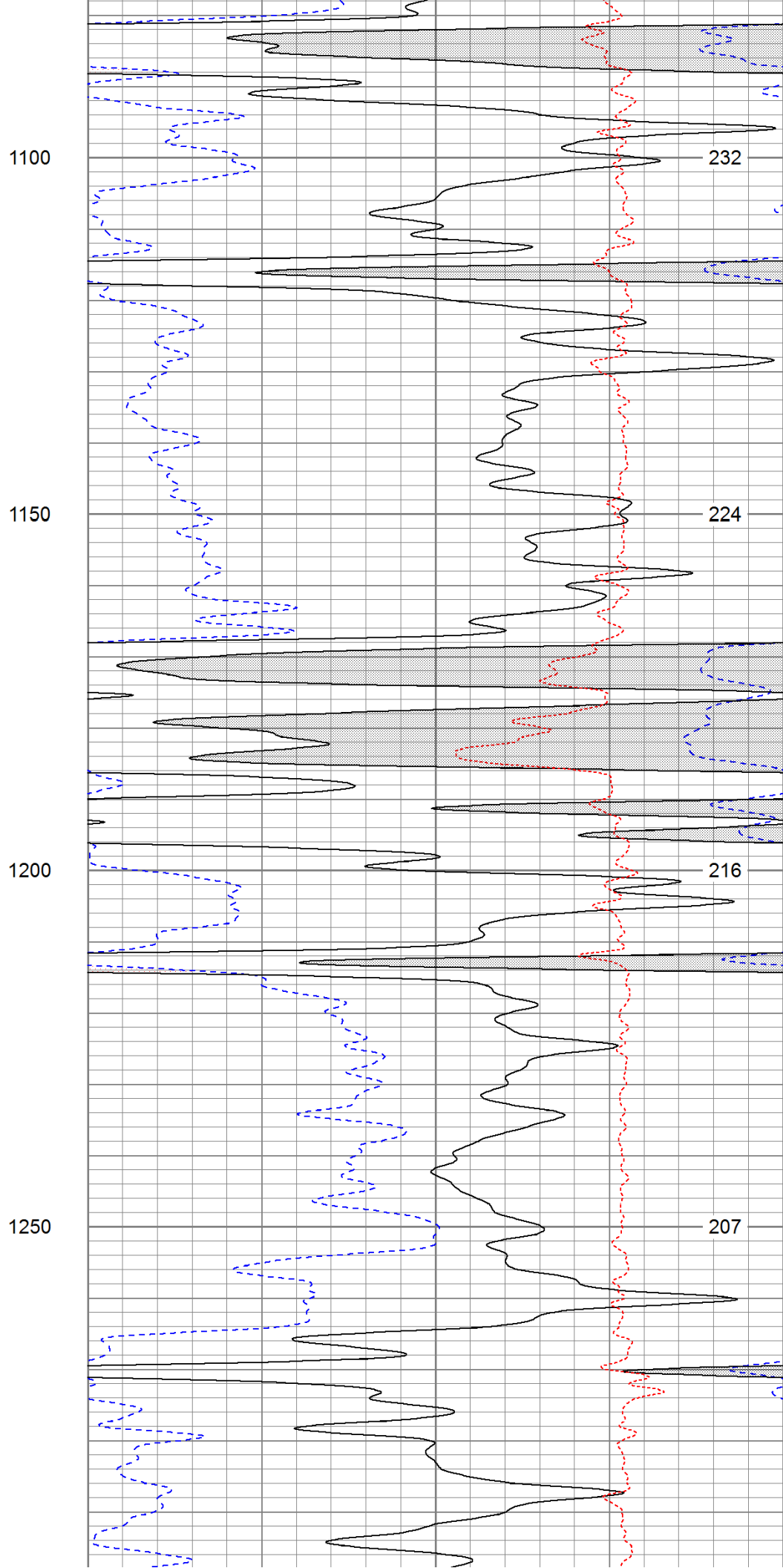
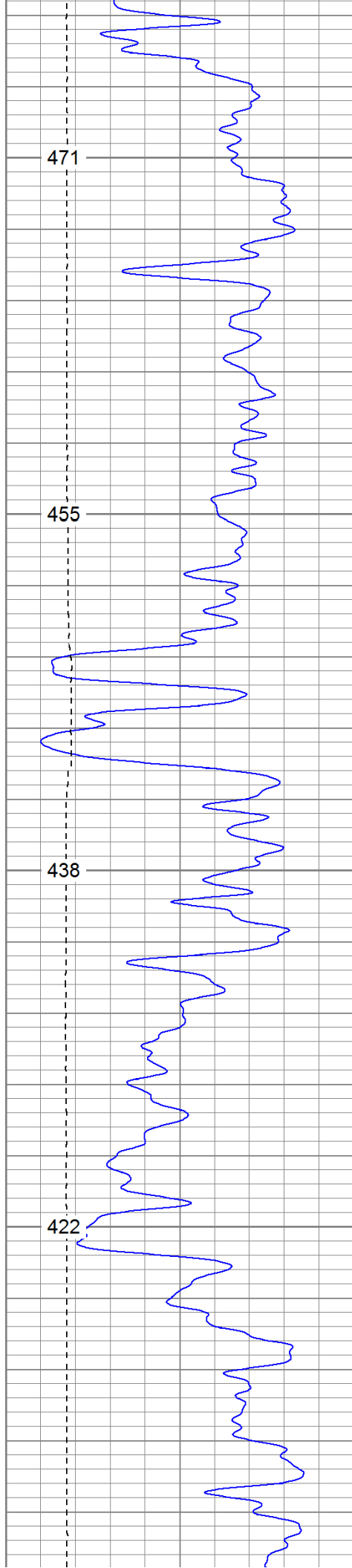
TBHV (ft3)

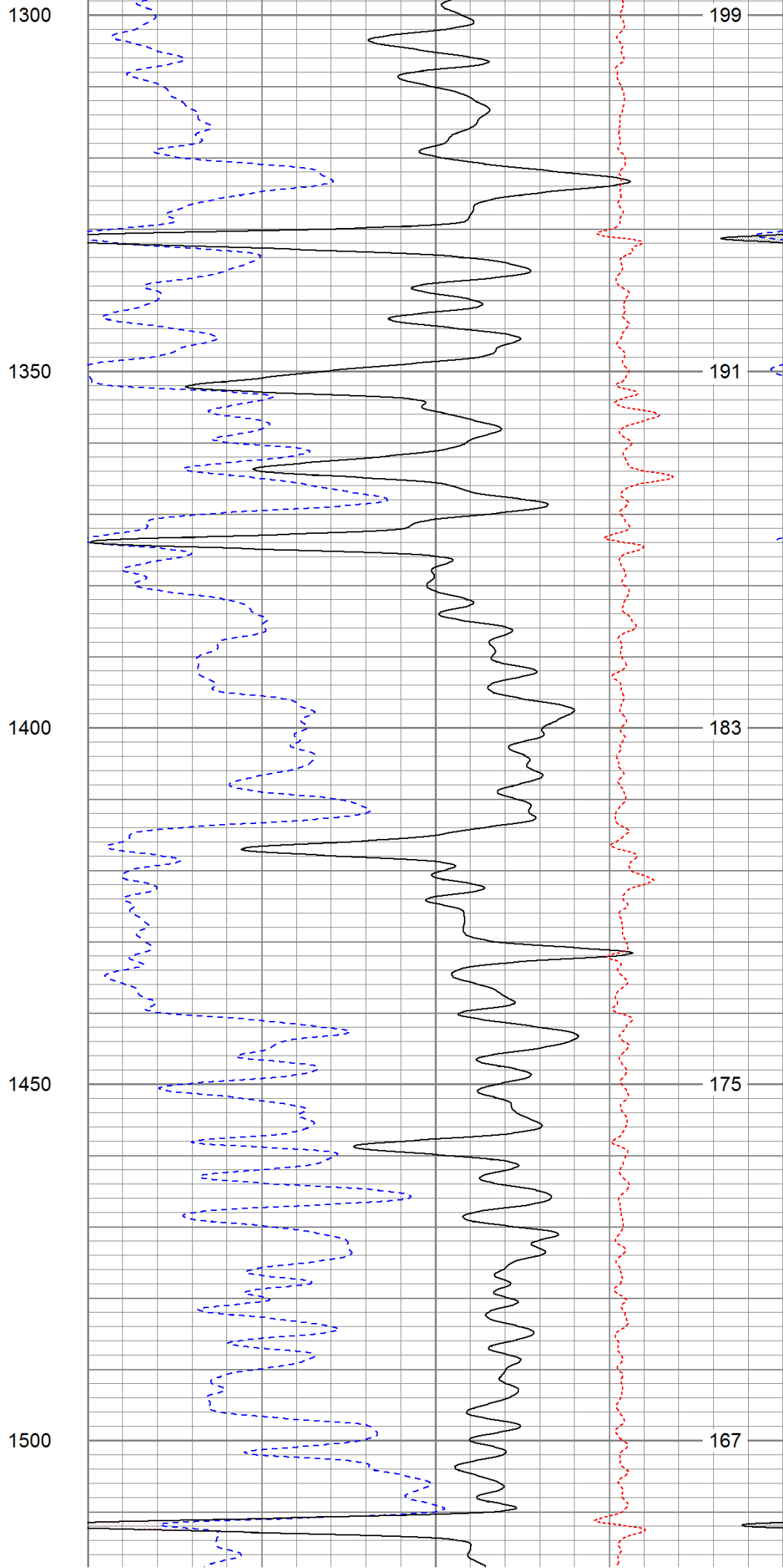
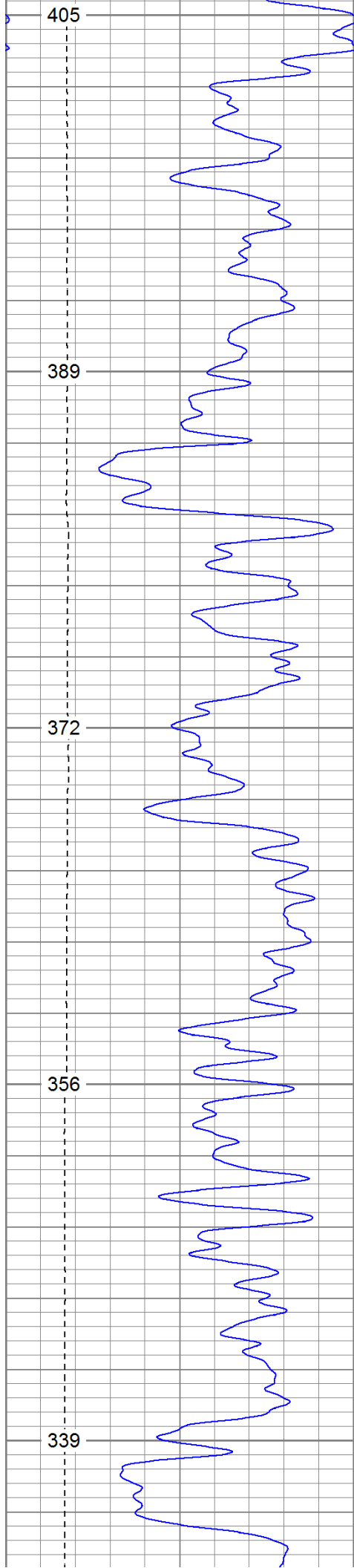
30	NPOR (pu)	-10
30	DPOR (pu)	-10

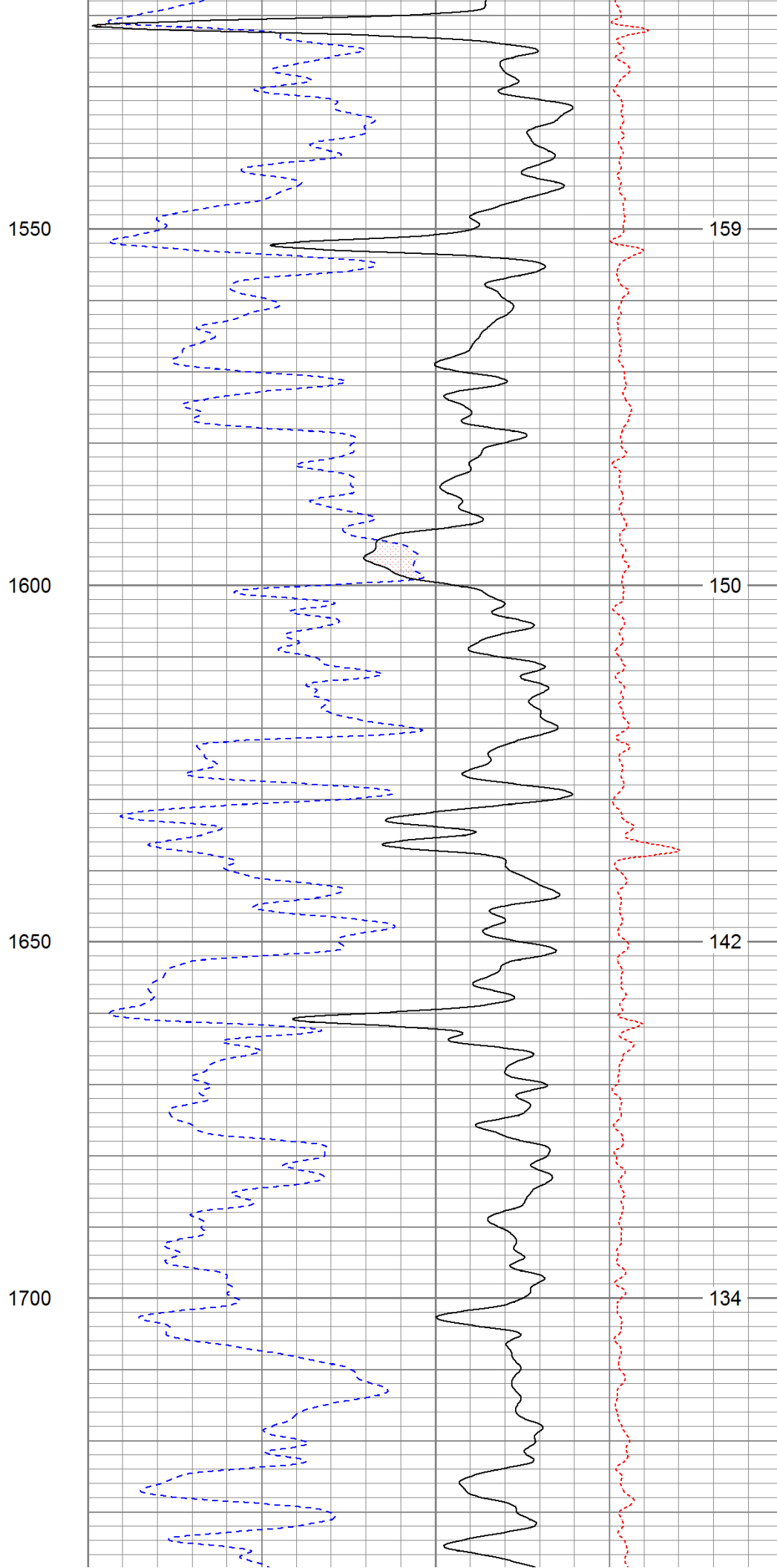
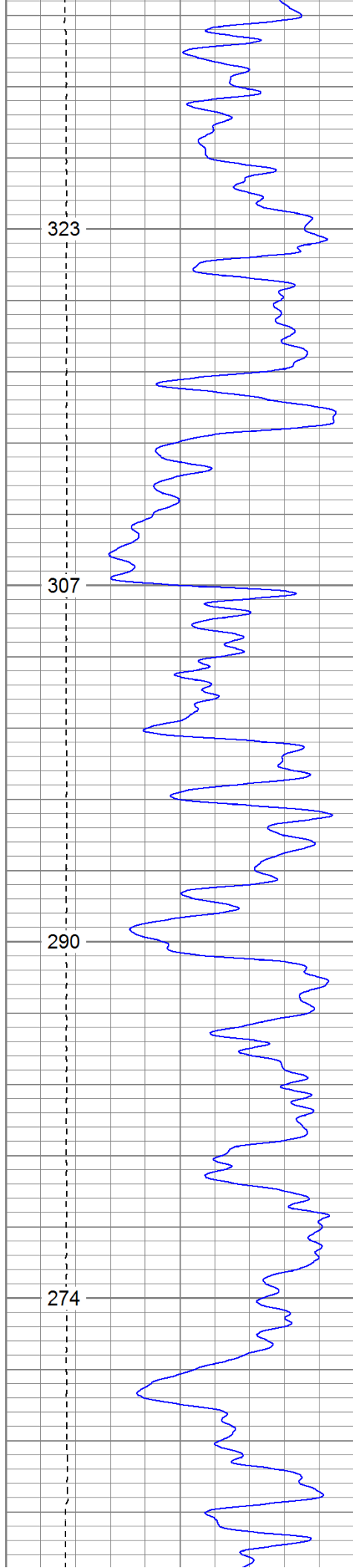
-0.5 RHOC (g/cc) 0.5

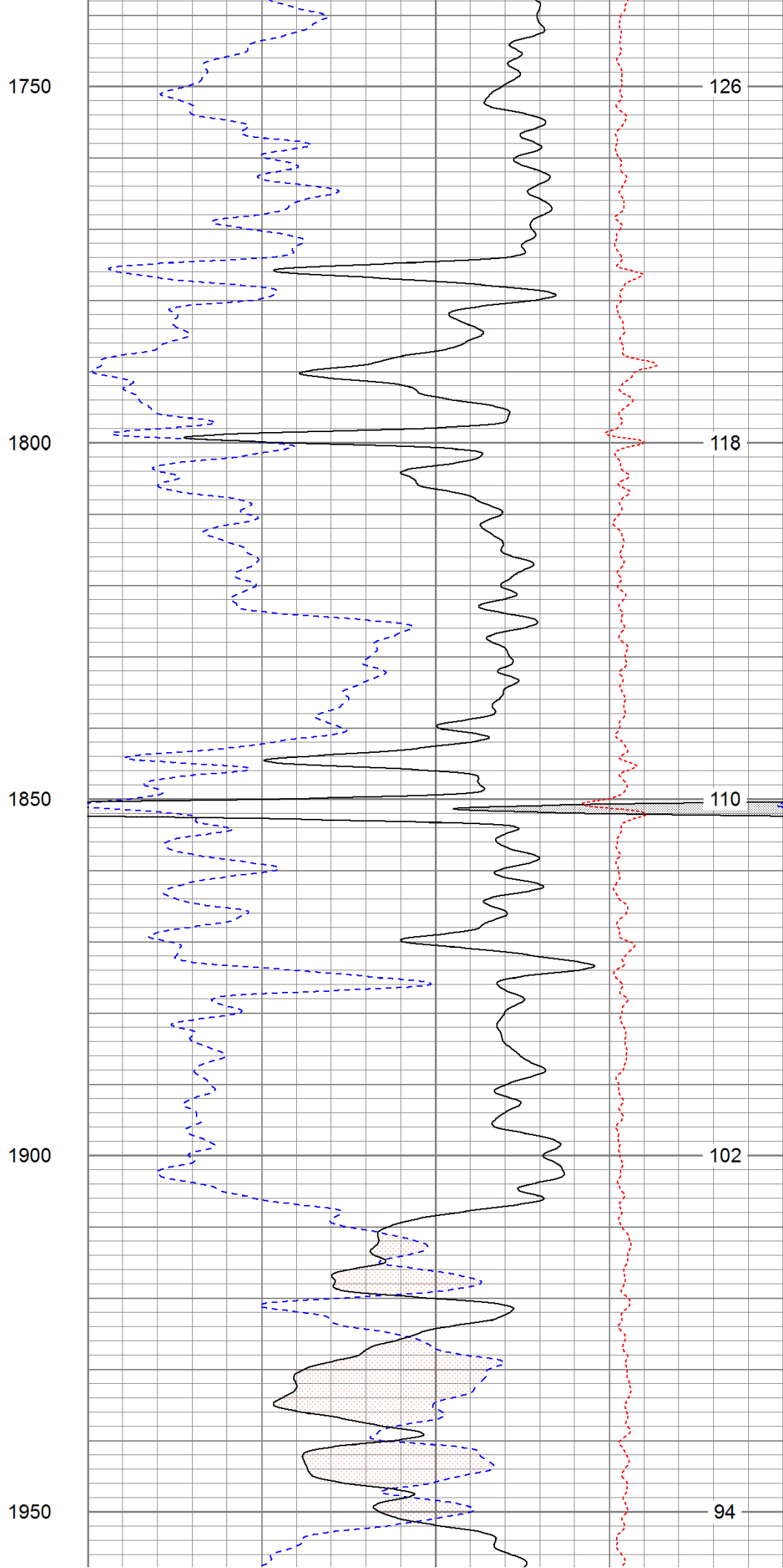
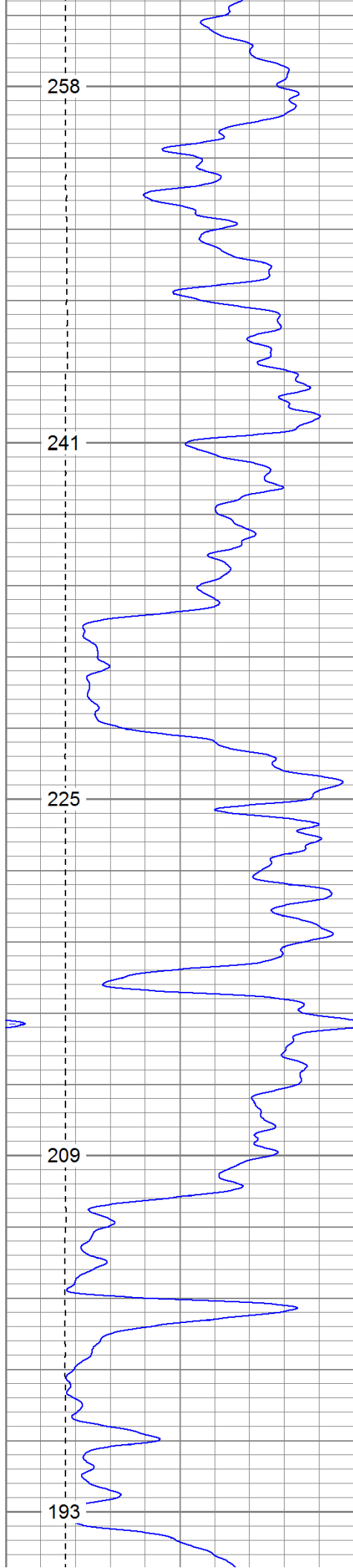
ABHV (ft3)

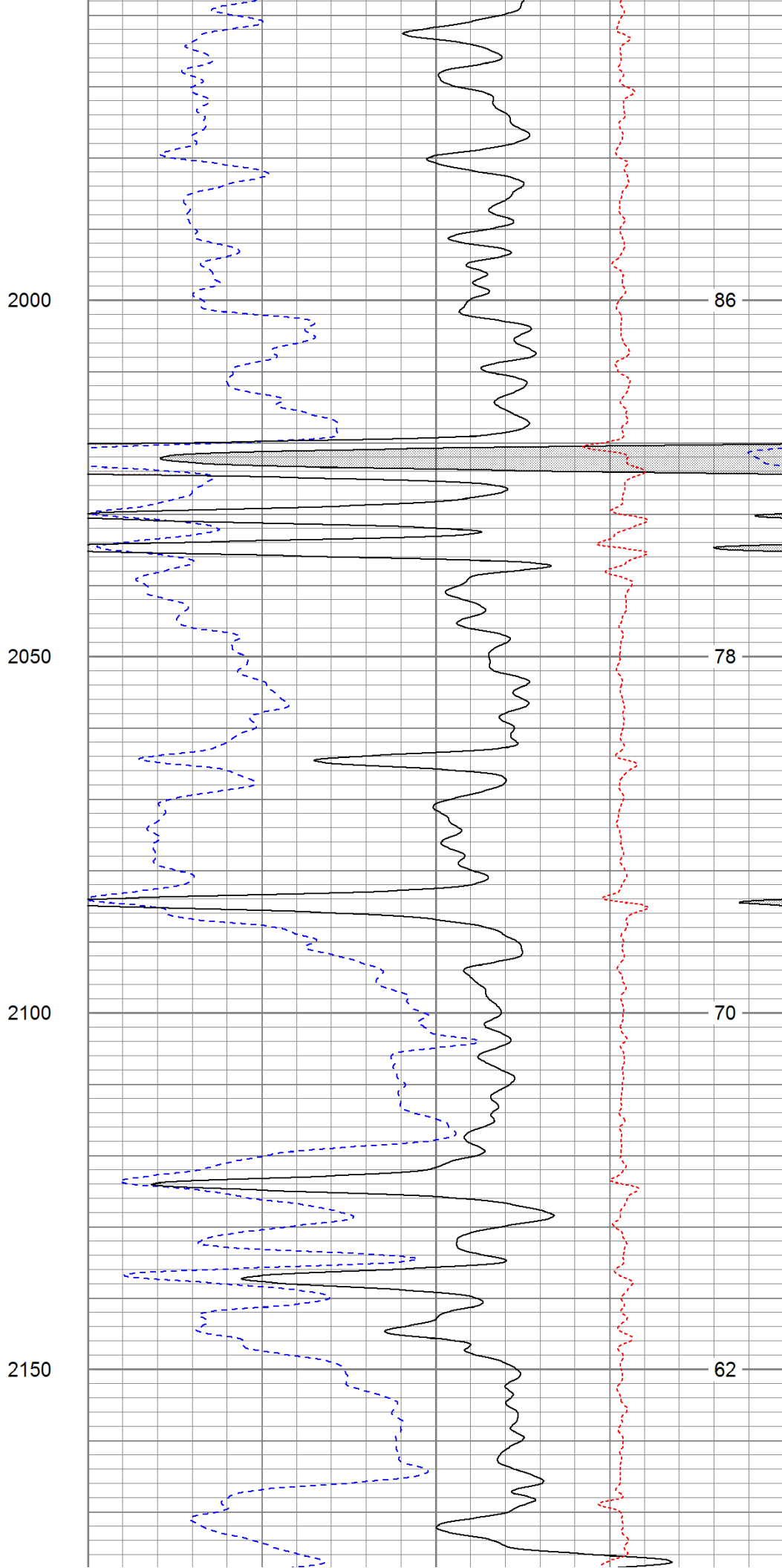
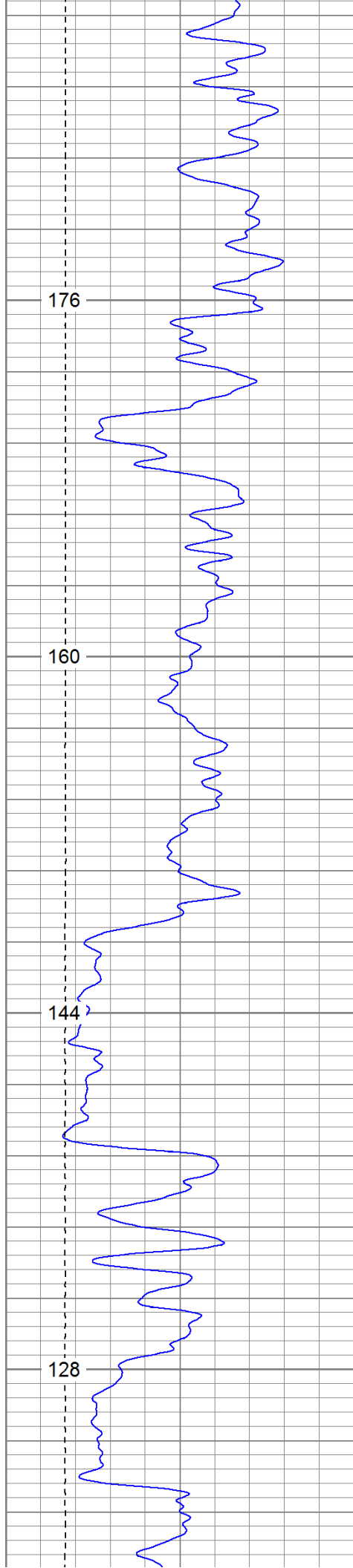


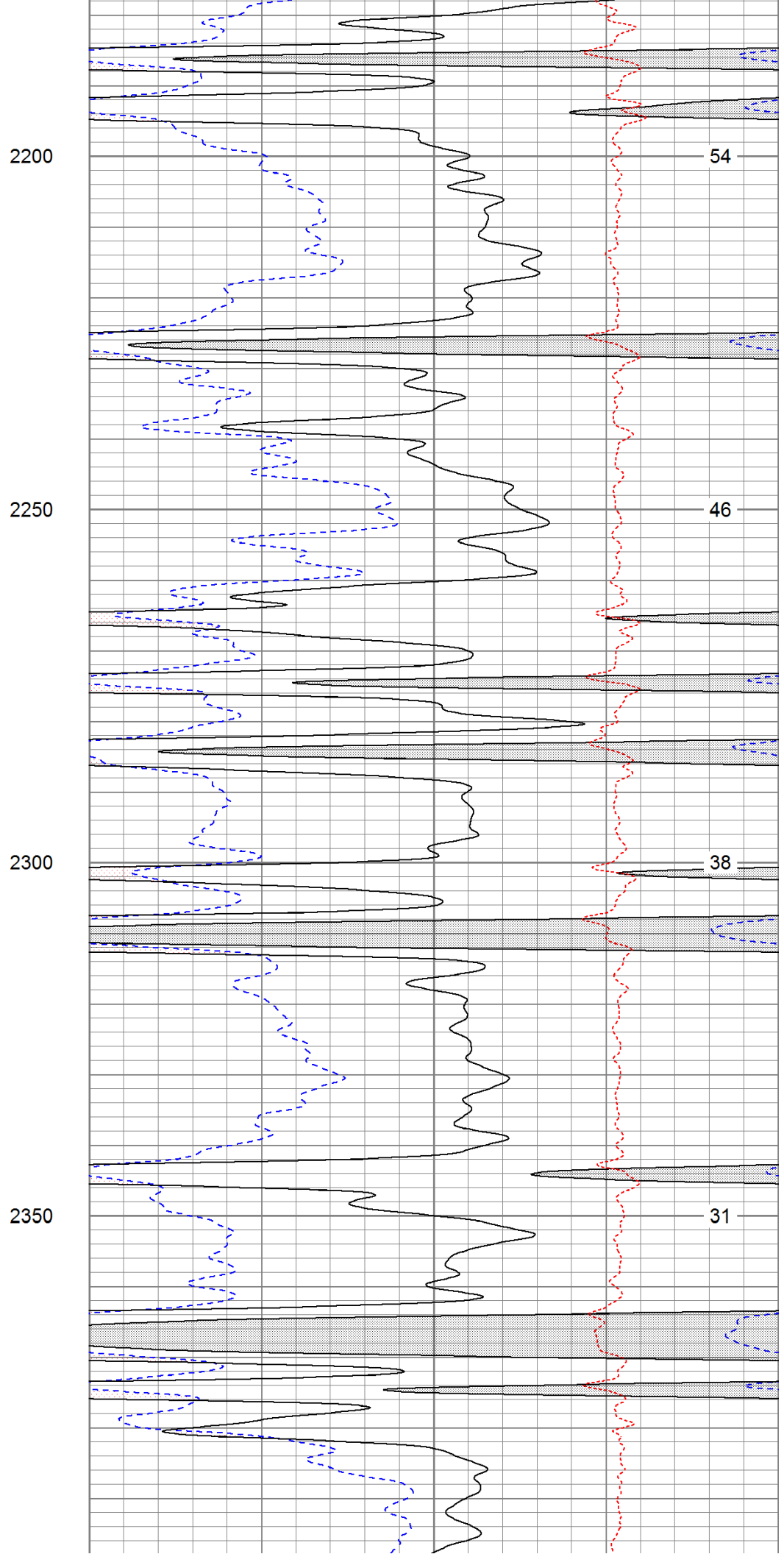
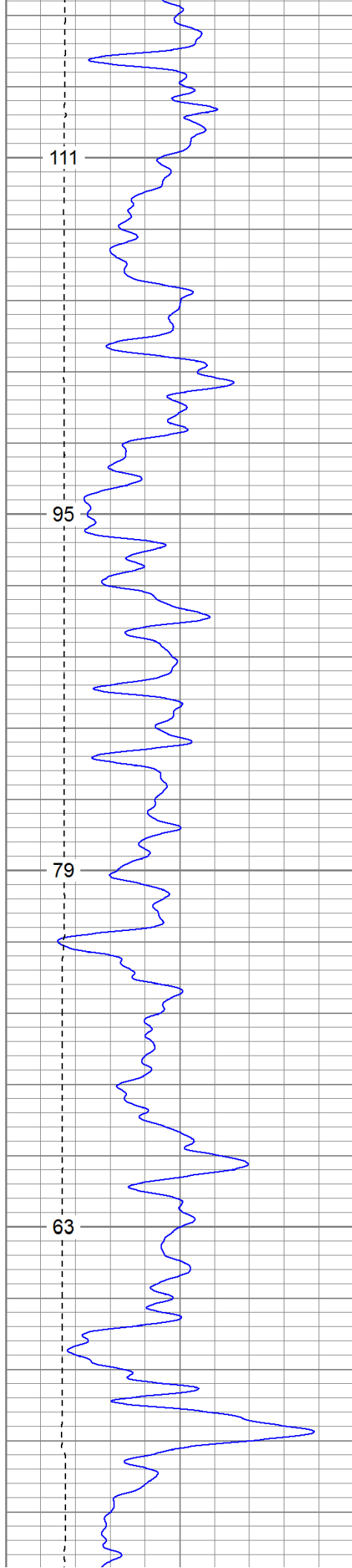


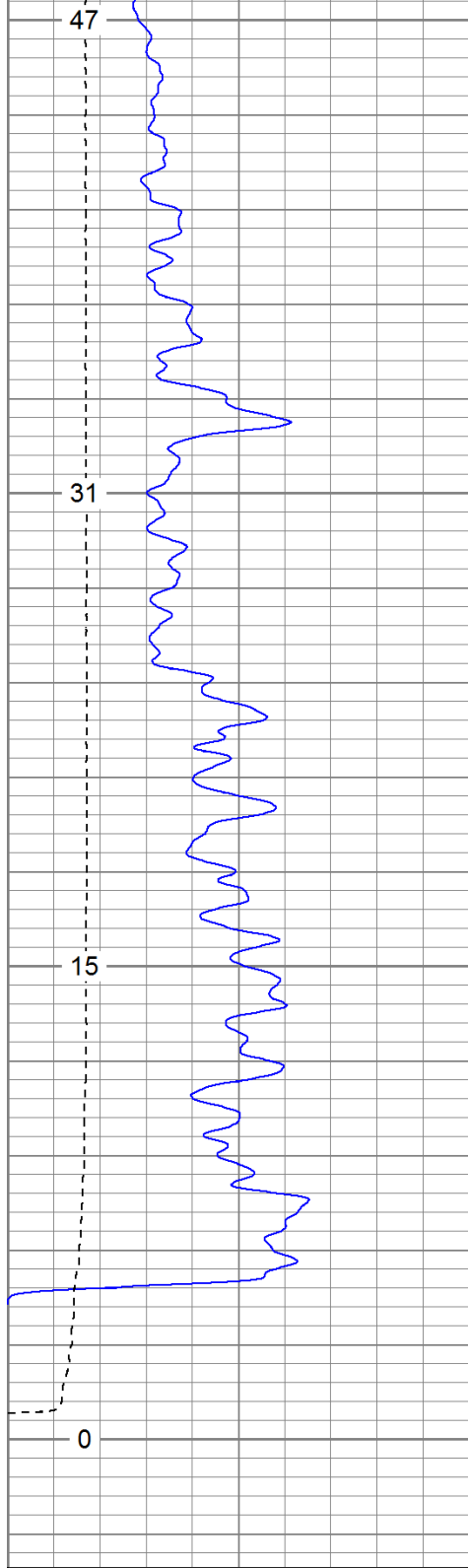




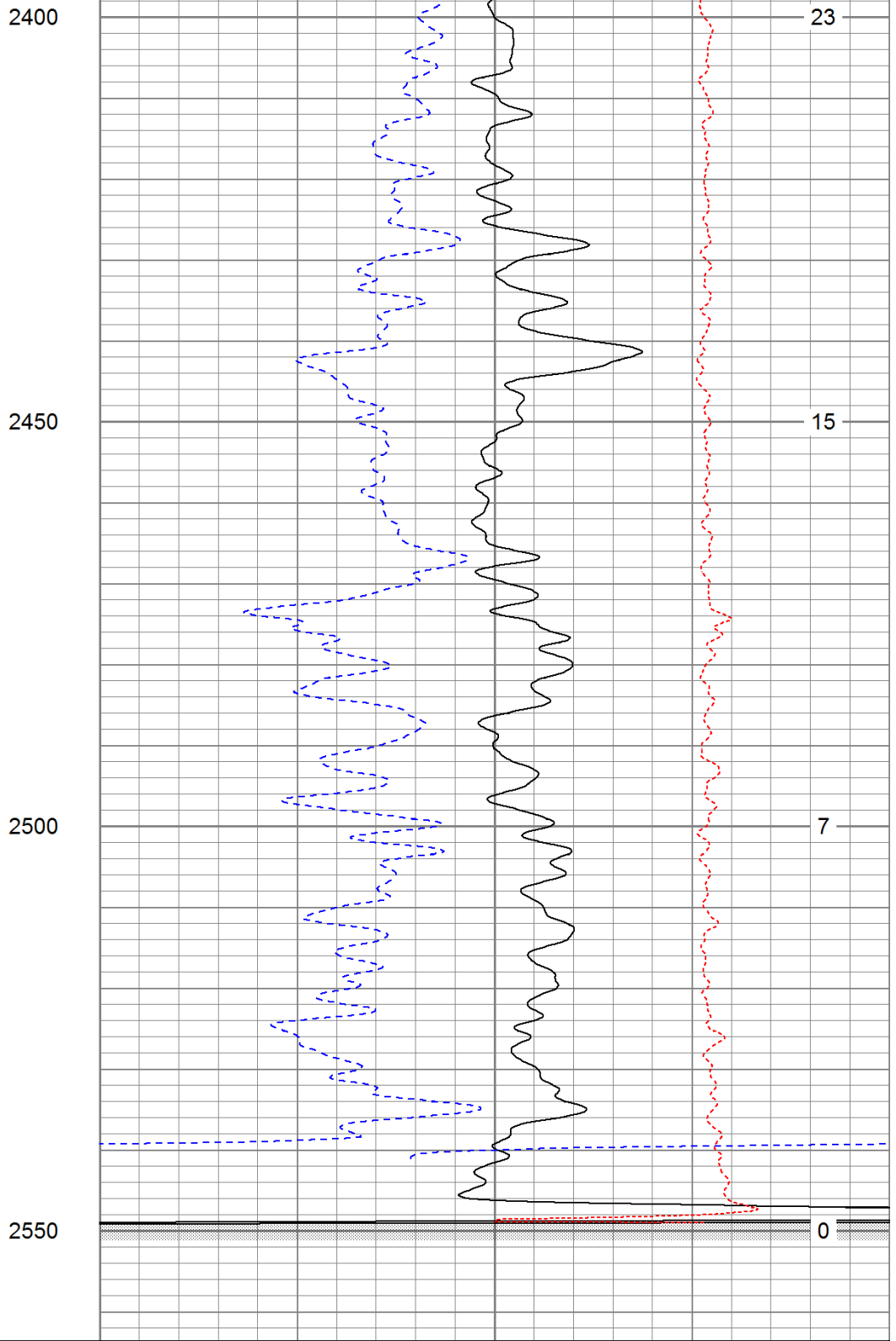








0	GR (GAPI)	200
6	DCAL (in)	16
TBHV (ft3)		

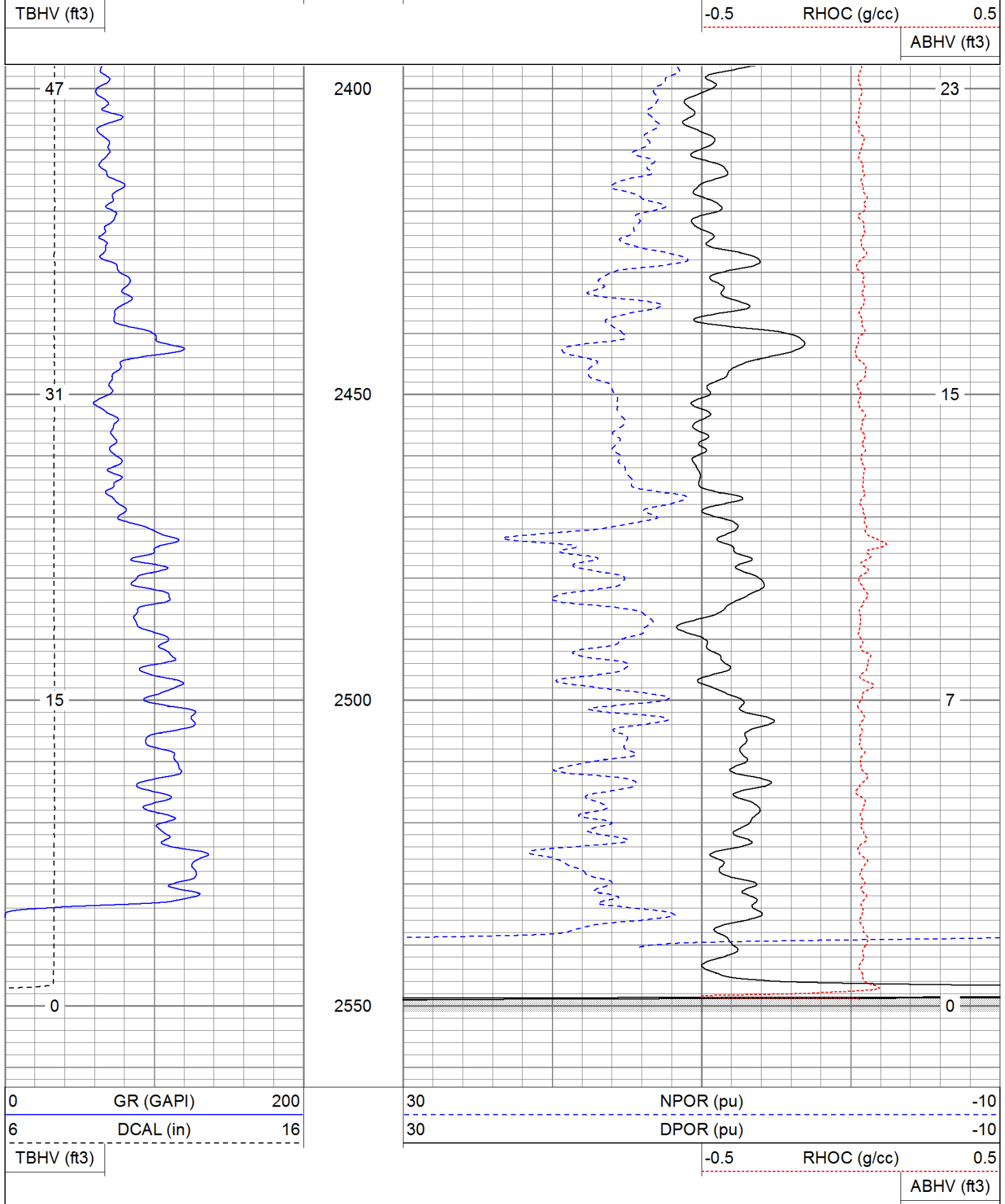


30	NPOR (pu)	-10
30	DPOR (pu)	-10
-0.5	RHOC (g/cc)	0.5
ABHV (ft3)		

Database File: hunter22-17.db
 Dataset Pathname: pass1
 Presentation Format: cdnl
 Dataset Creation: Thu Oct 27 02:43:15 2011 by Log Open-Cased 110302
 Charted by: Depth in Feet scaled 1:240

0	GR (GAPI)	200
6	DCAL (in)	16

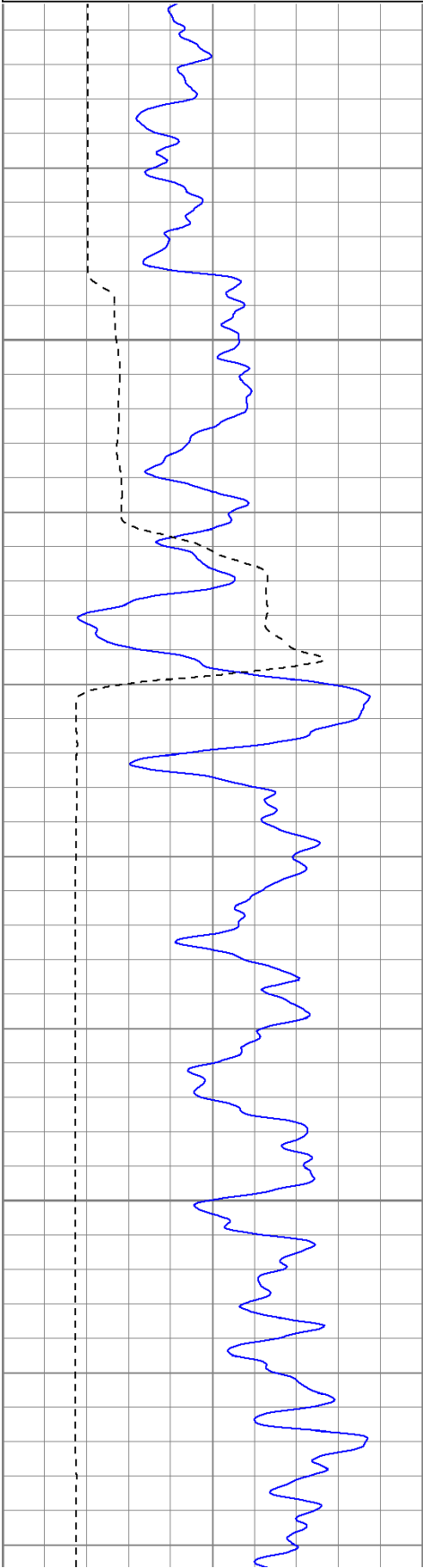
30	NPOR (pu)	-10
30	DPOR (pu)	-10



Database File: hunter22-17.db
Dataset Pathname: pass2.1
Presentation Format: cdlhr
Dataset Creation: Thu Oct 27 05:09:31 2011 by Calc Open-Cased 110302
Charted by: Depth in Feet scaled 1:120

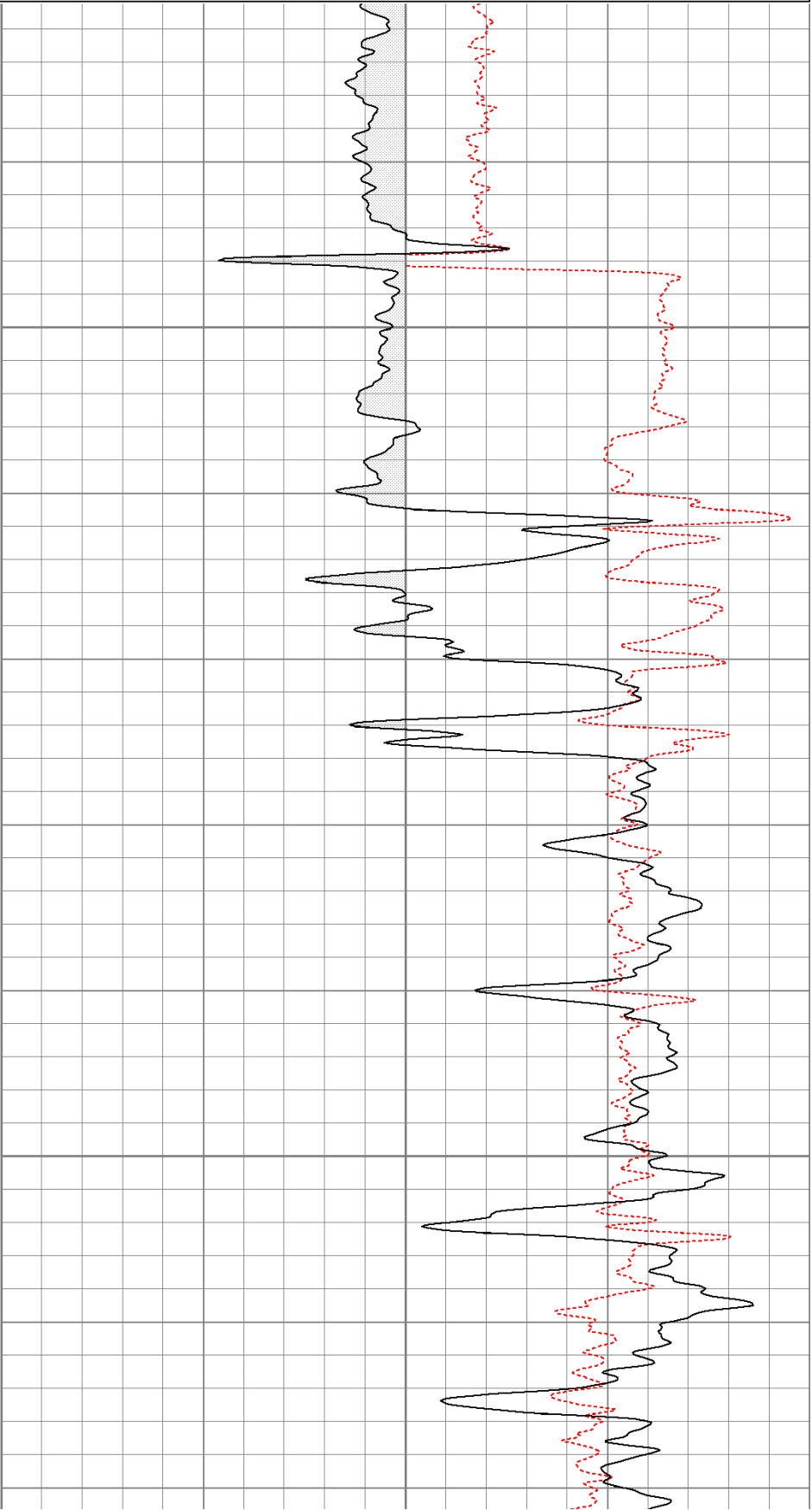
0	GR (GAPI)	200
6	DCAL (in)	16

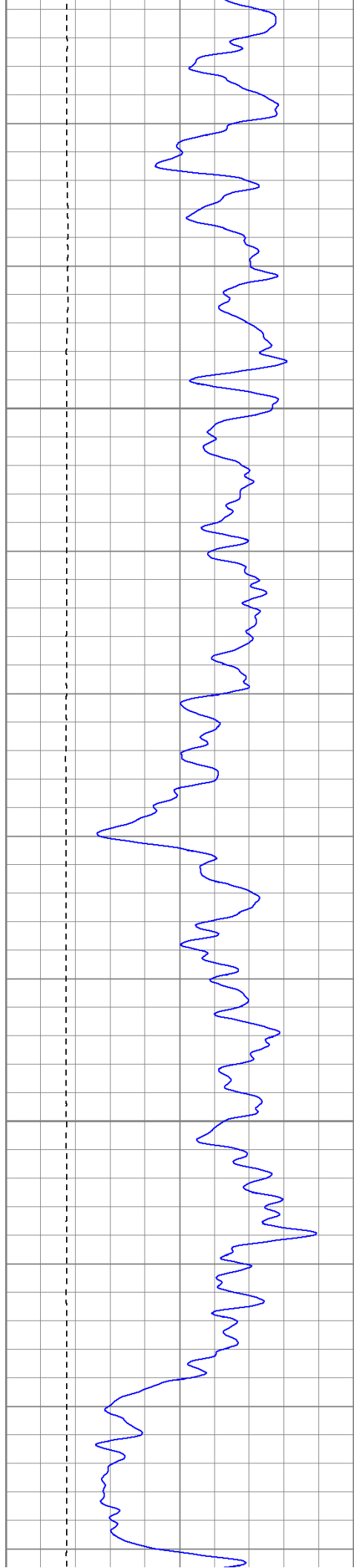
1	RHOB (g/cc)	3
-0.5	RHOC (g/cc)	0.5



900

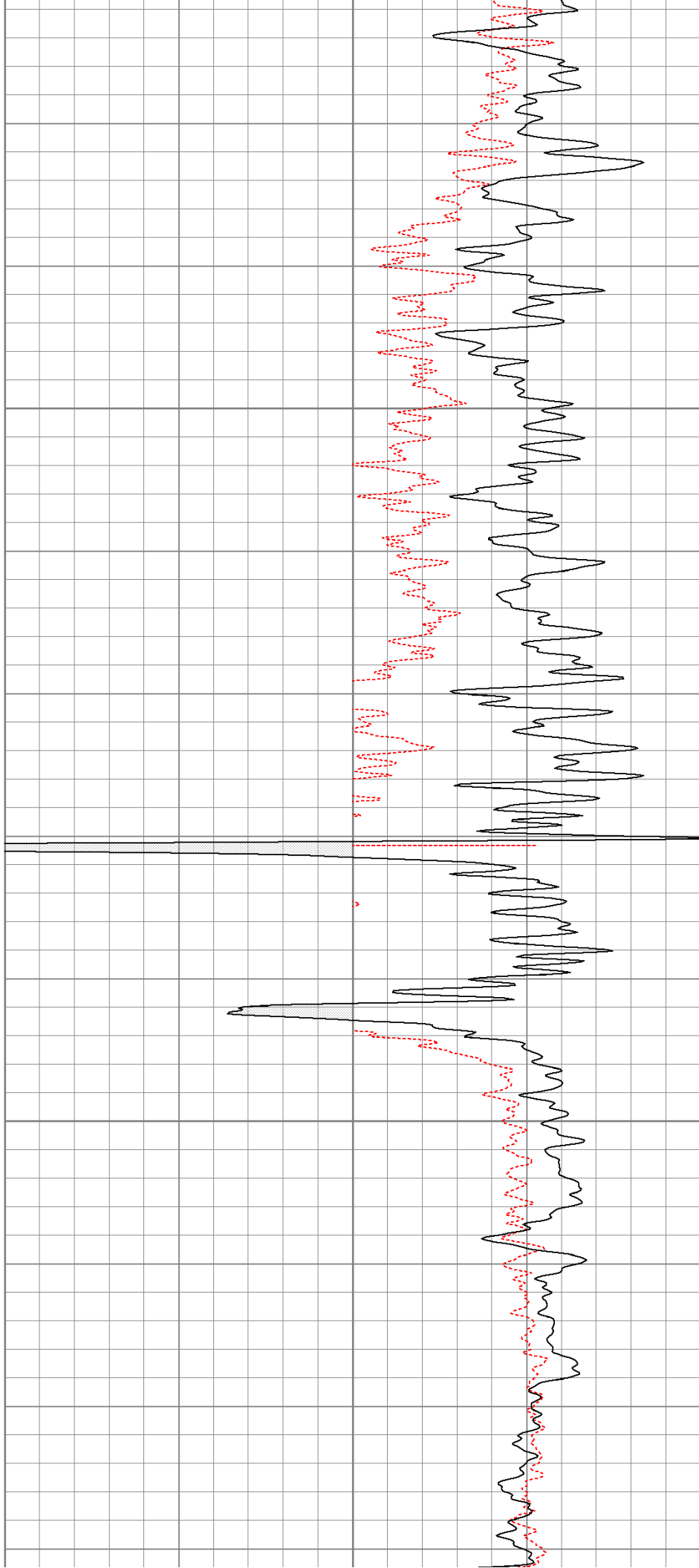
950

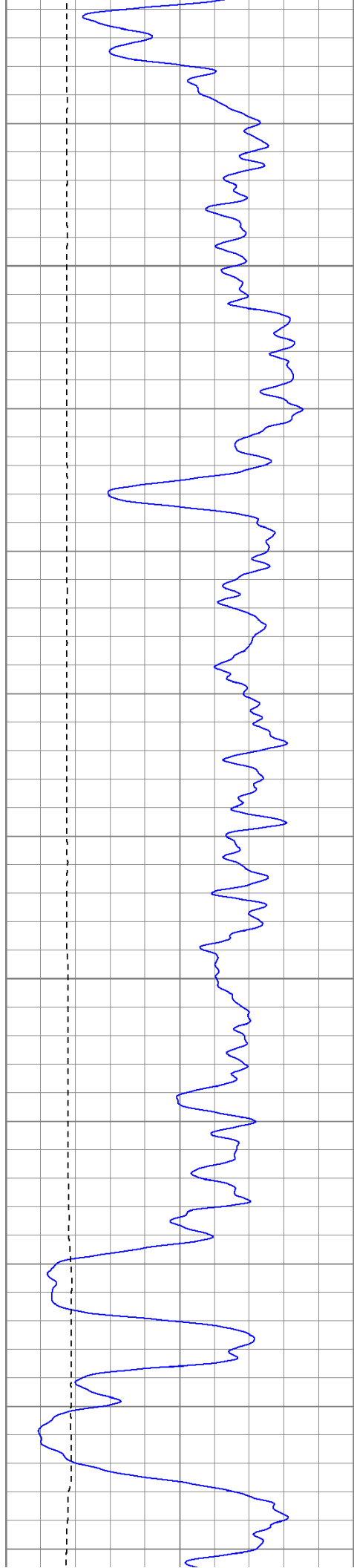




1000

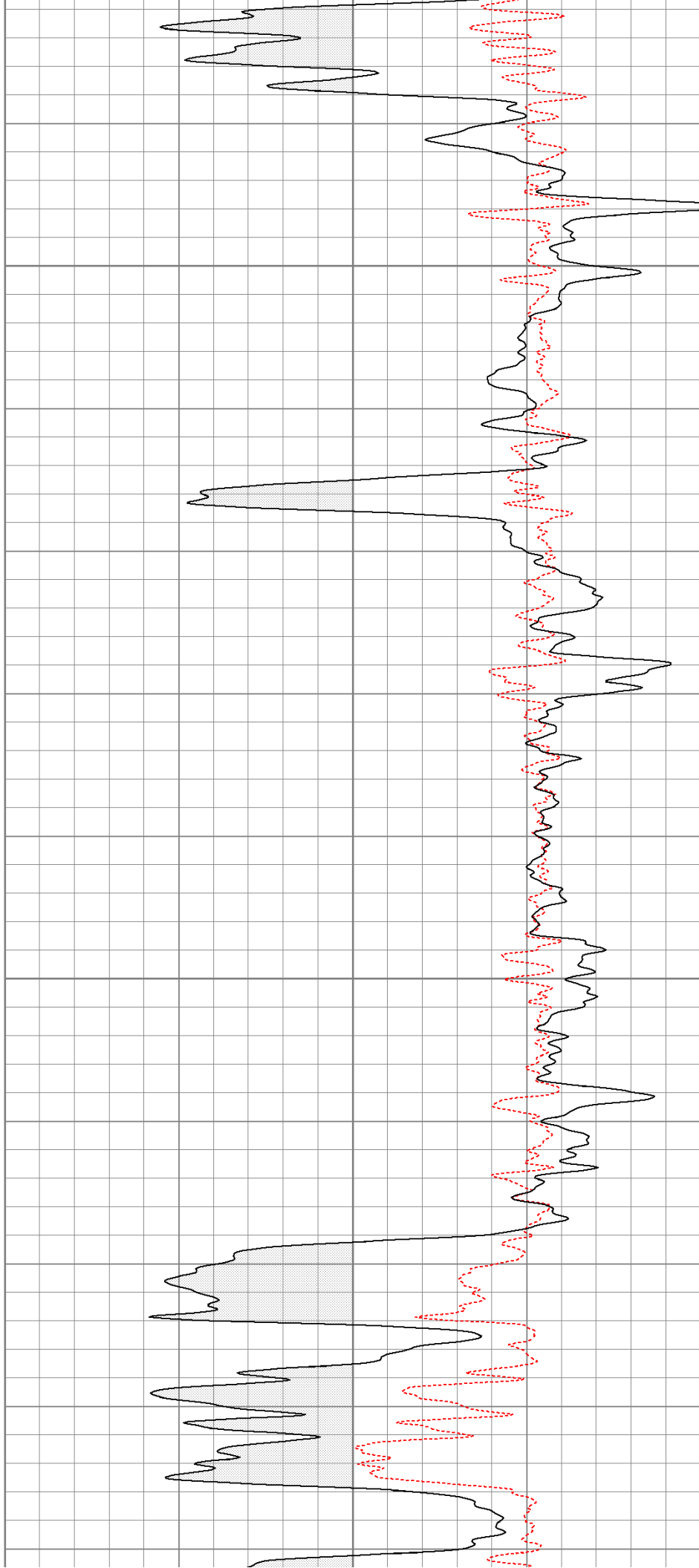
1050

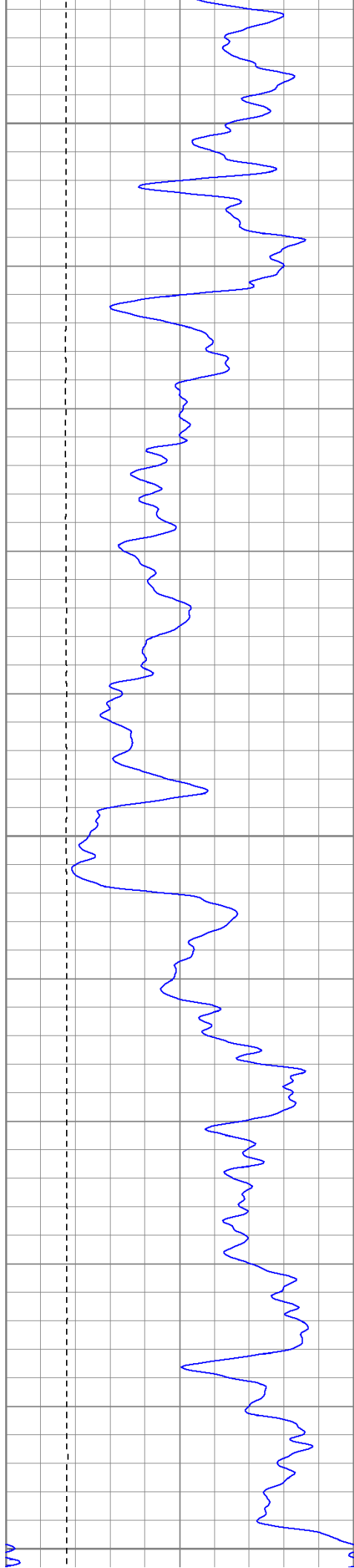




1100

1150

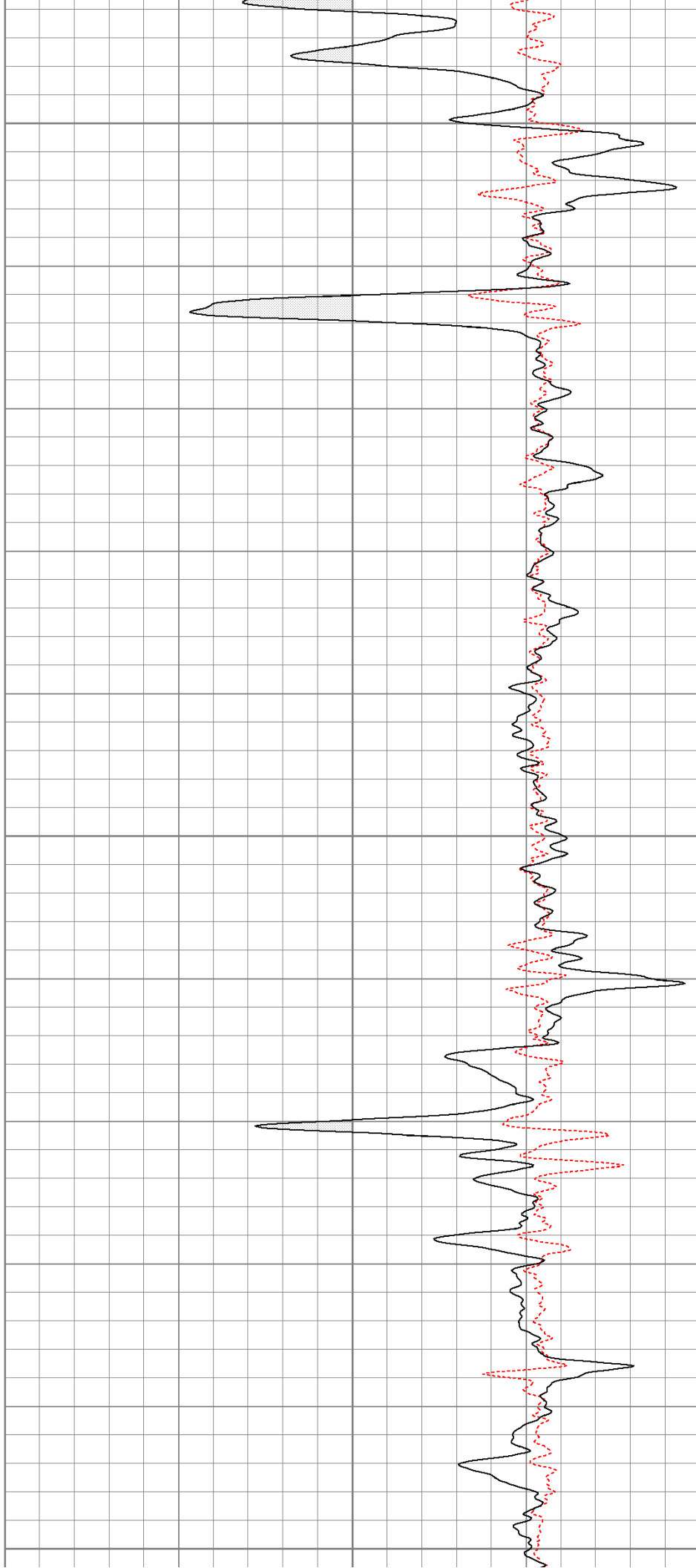


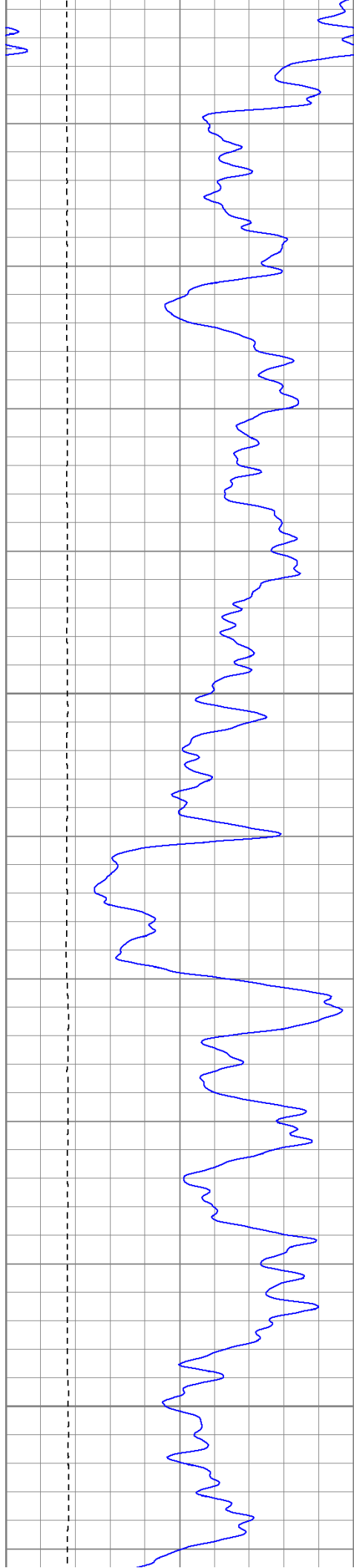


1200

1250

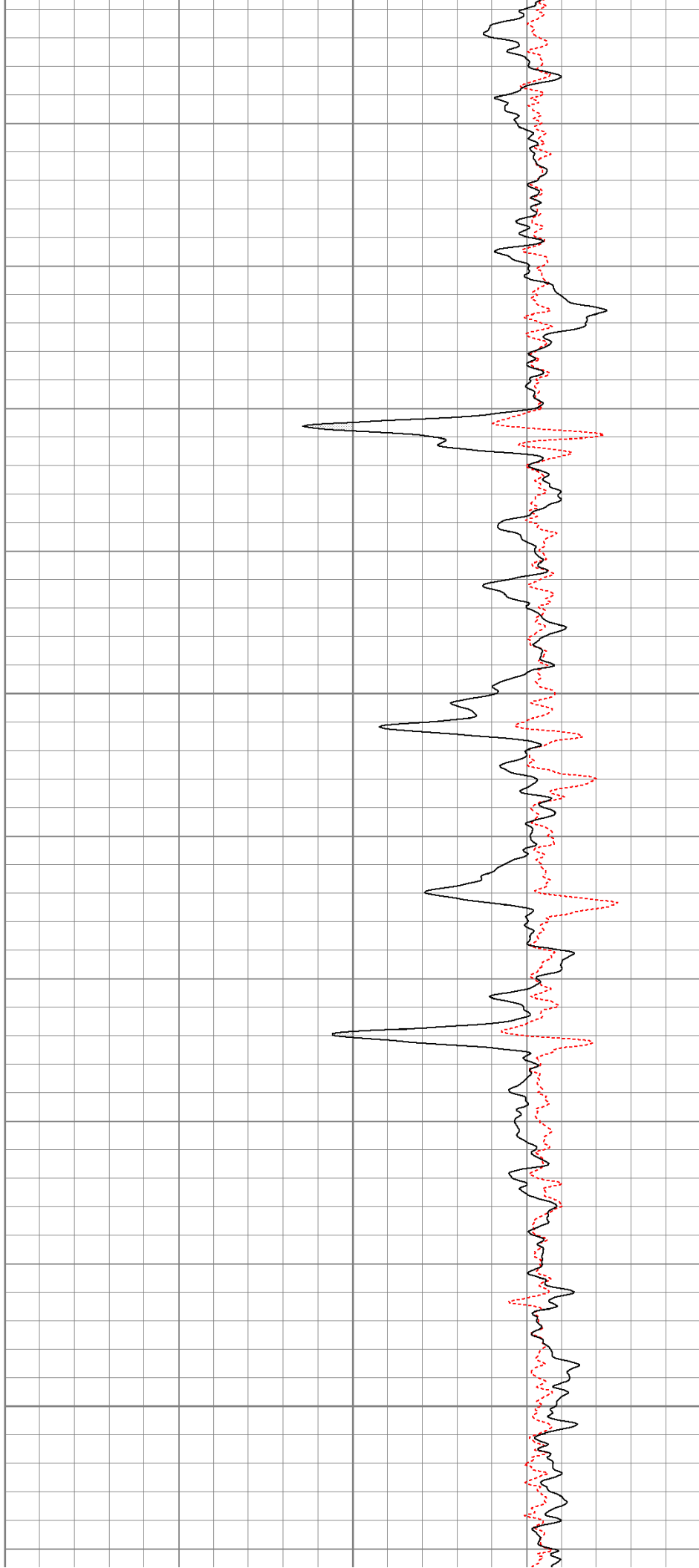
1300

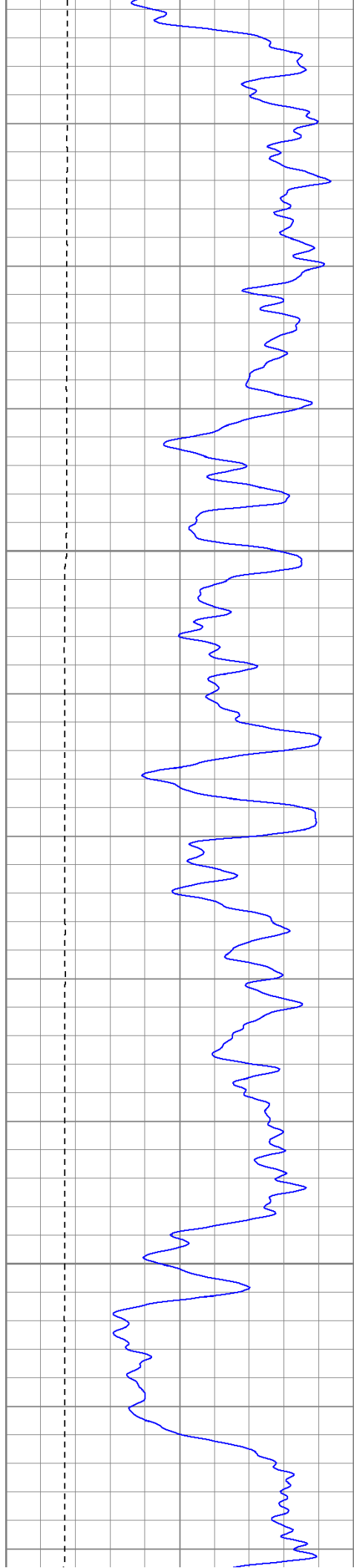




1350

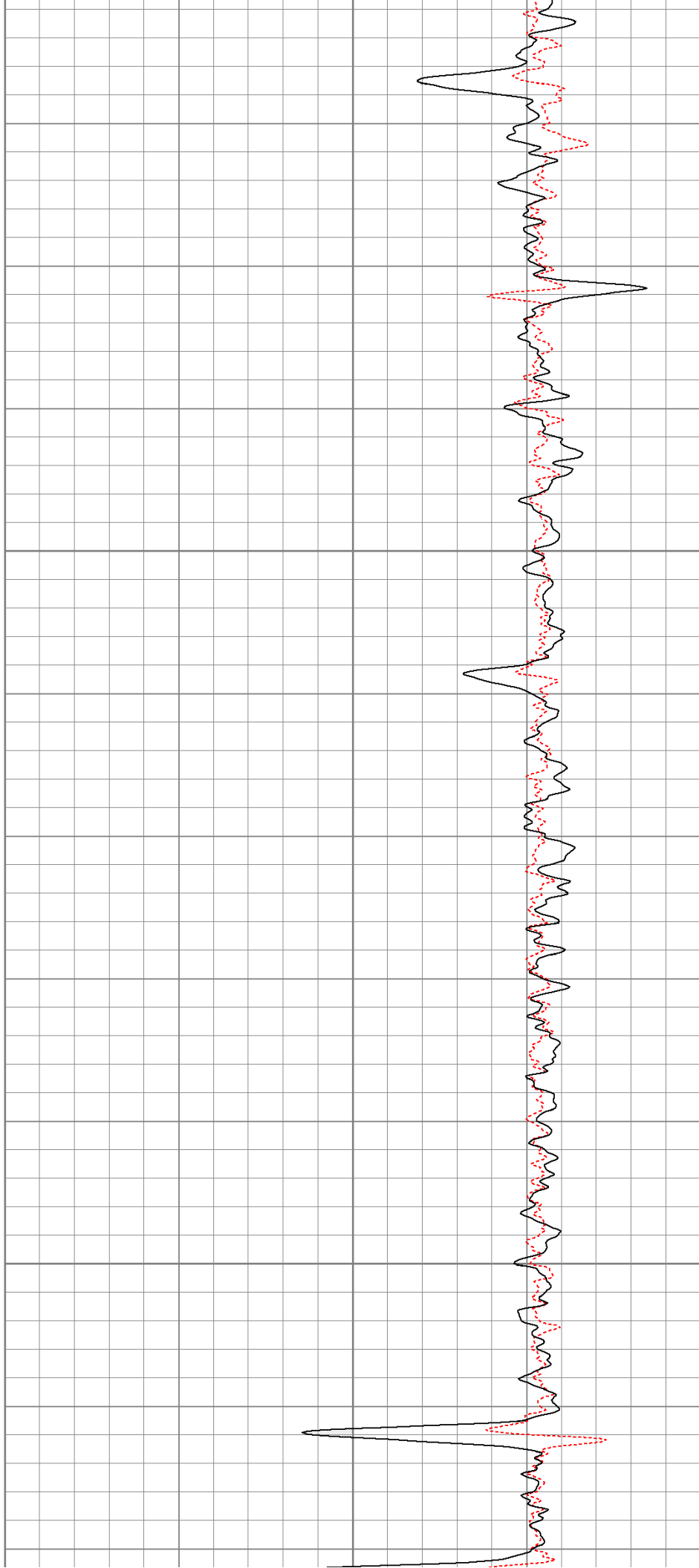
1400

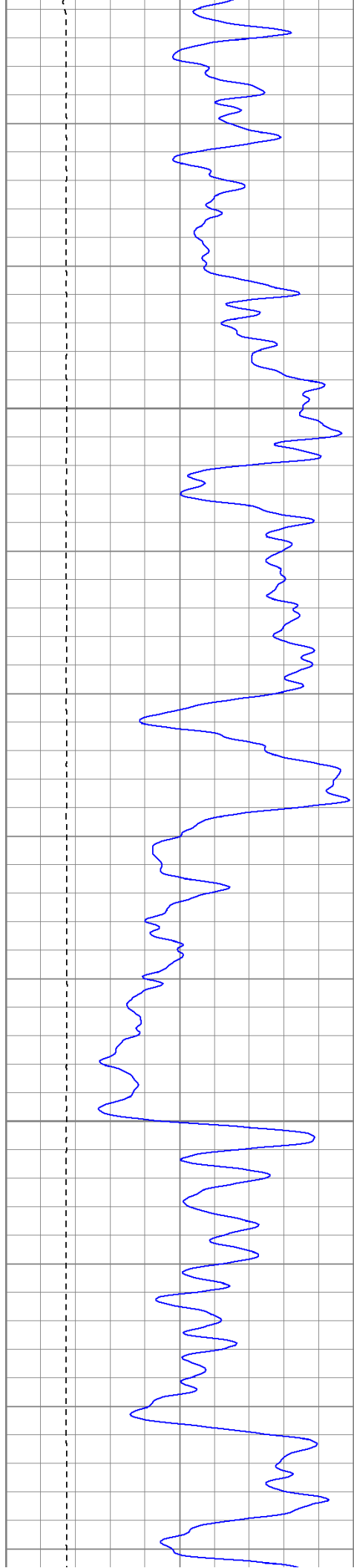




1450

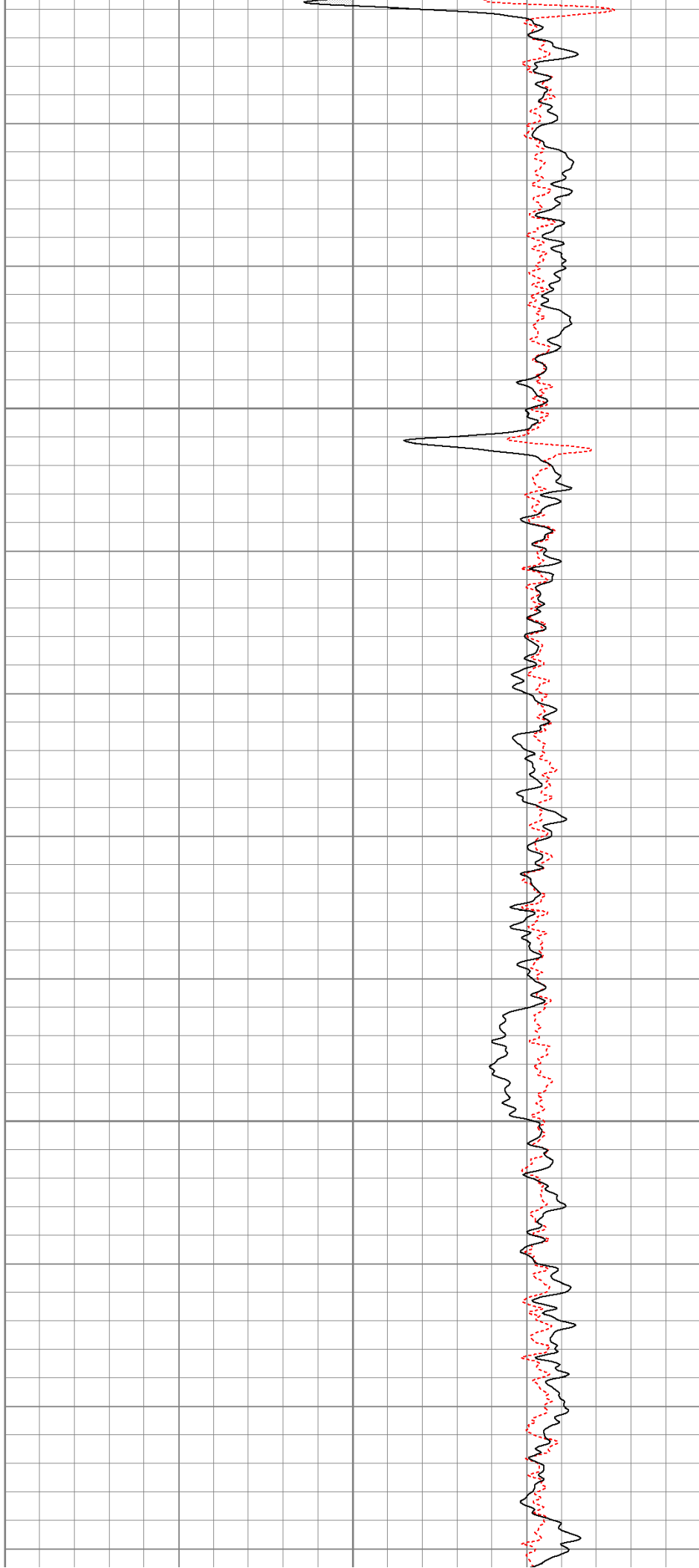
1500

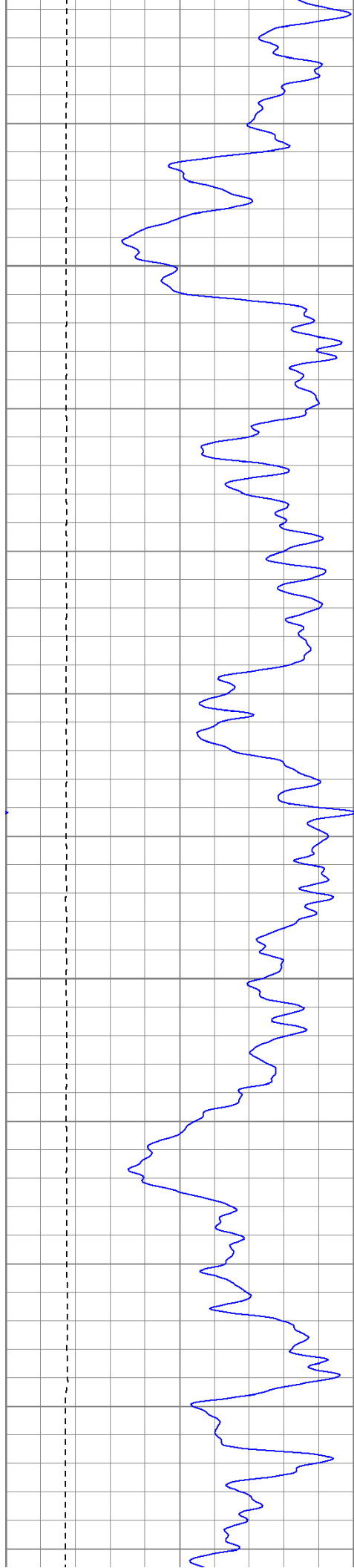




1550

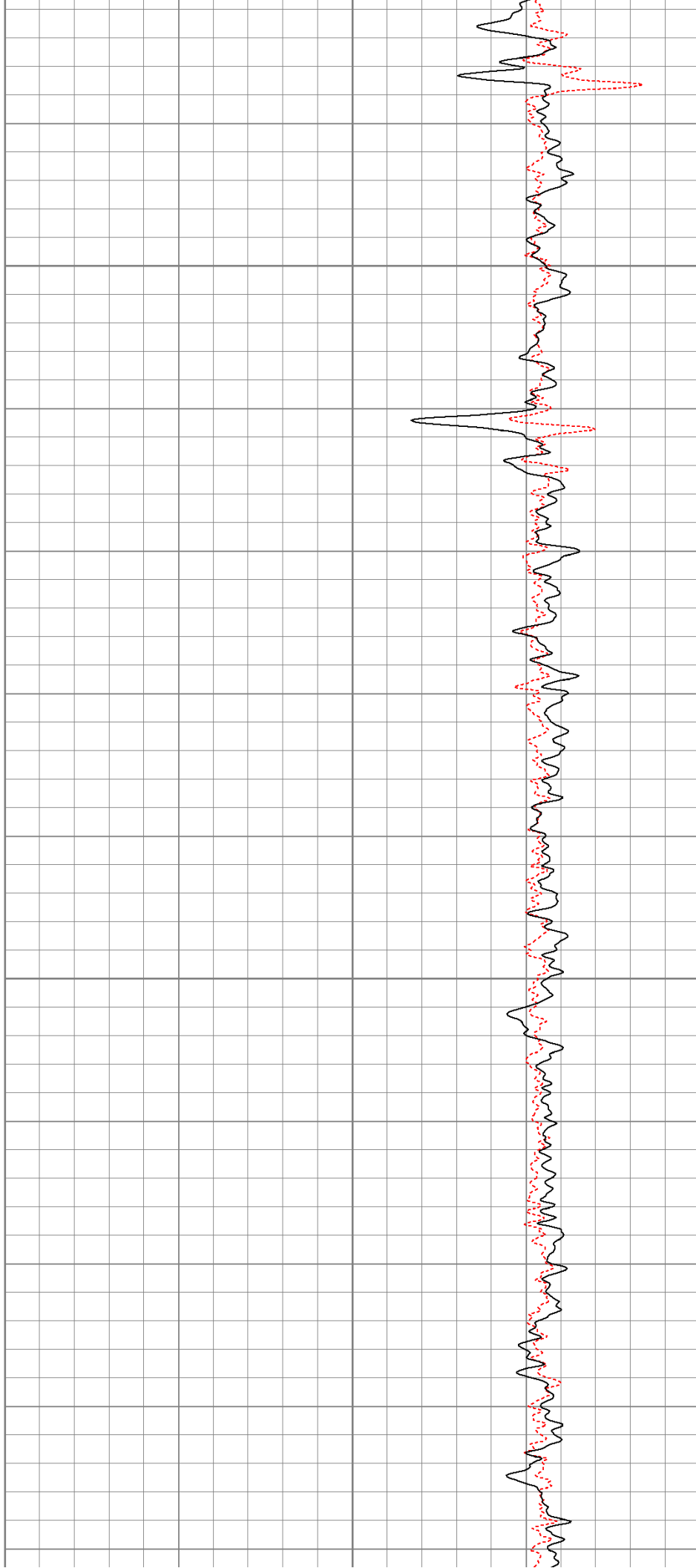
1600

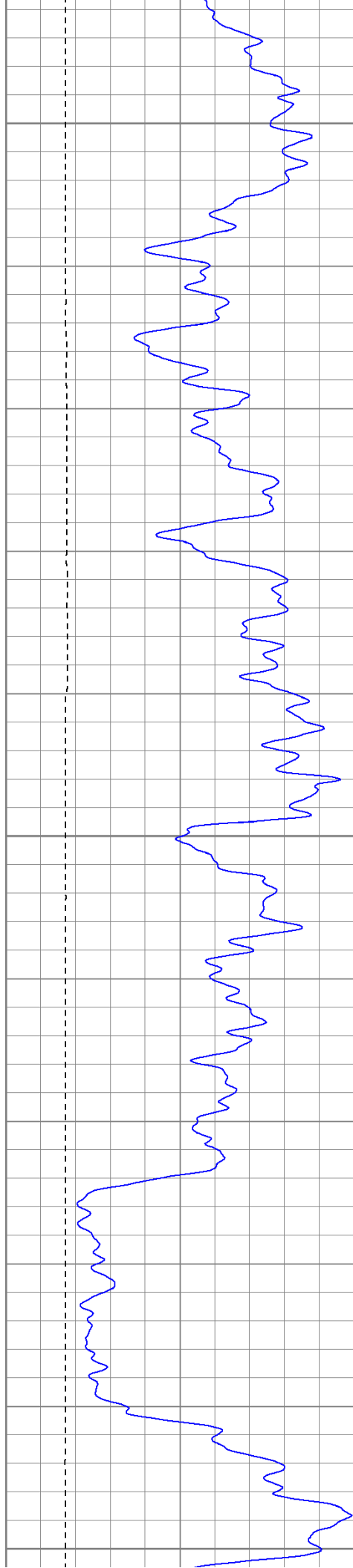




1650

1700

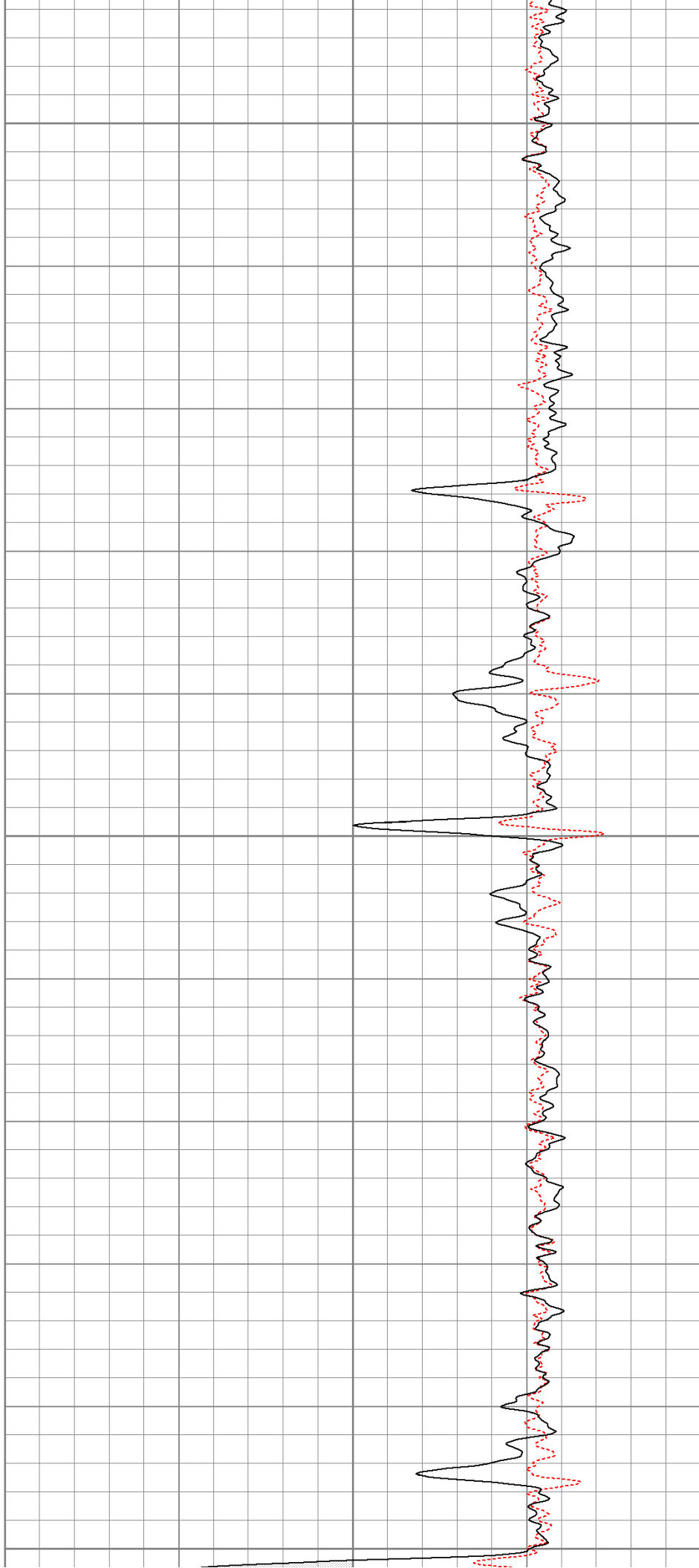


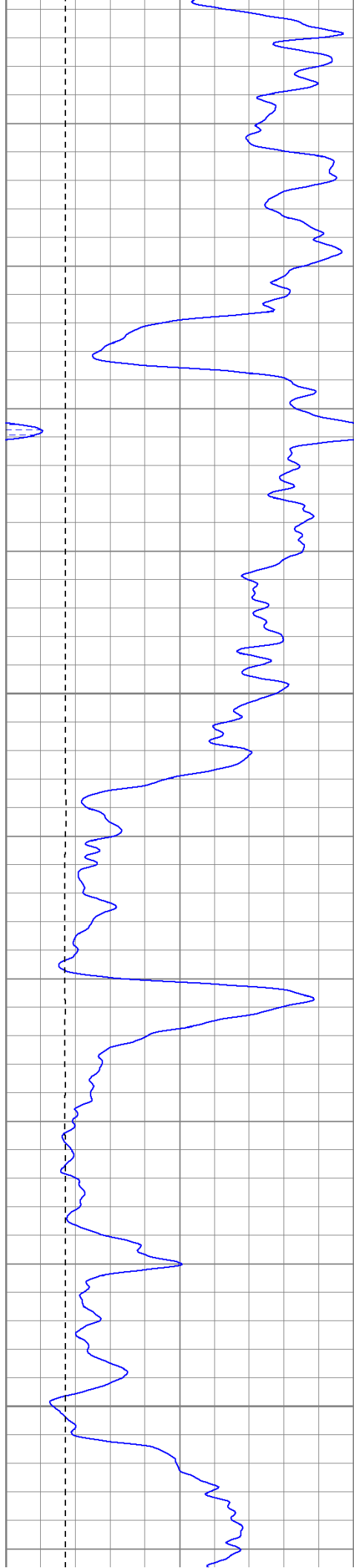


1750

1800

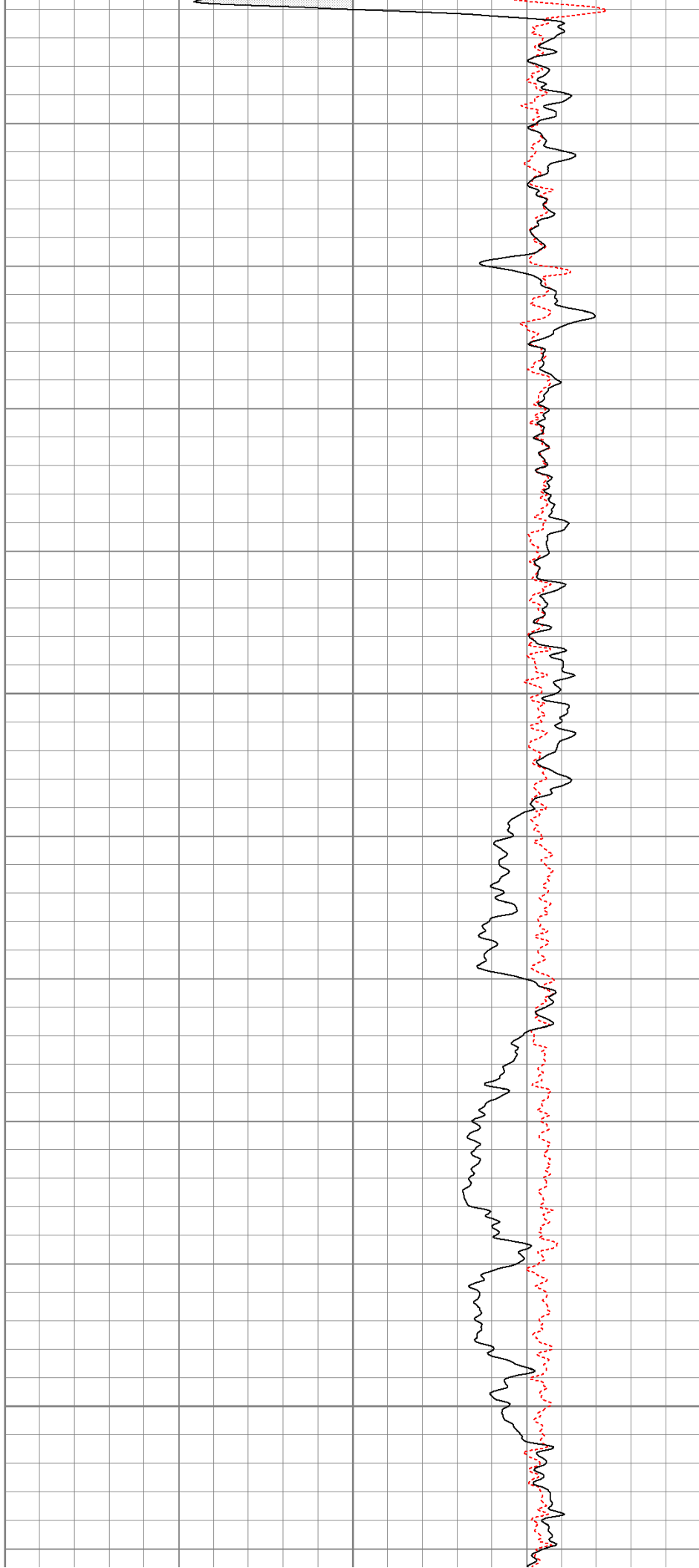
1850

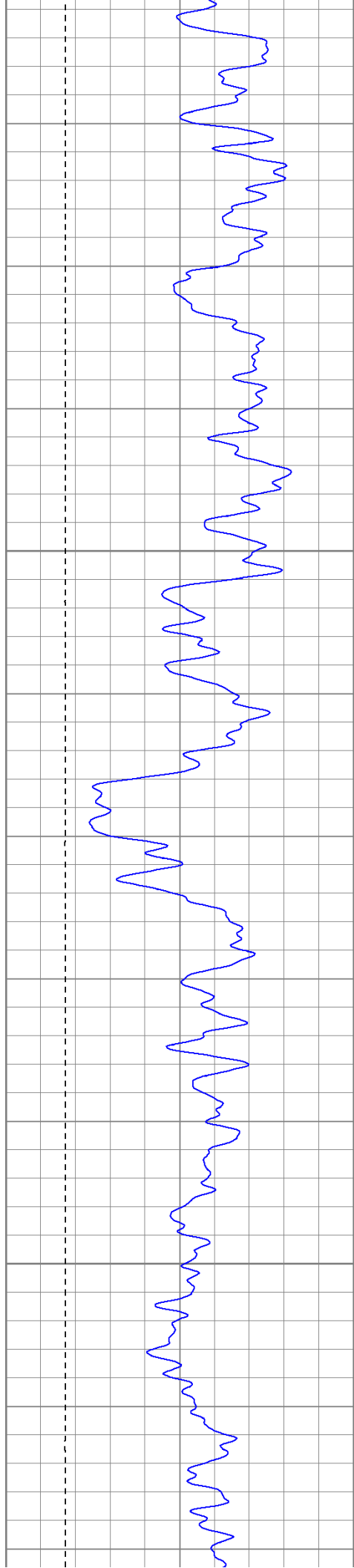




1900

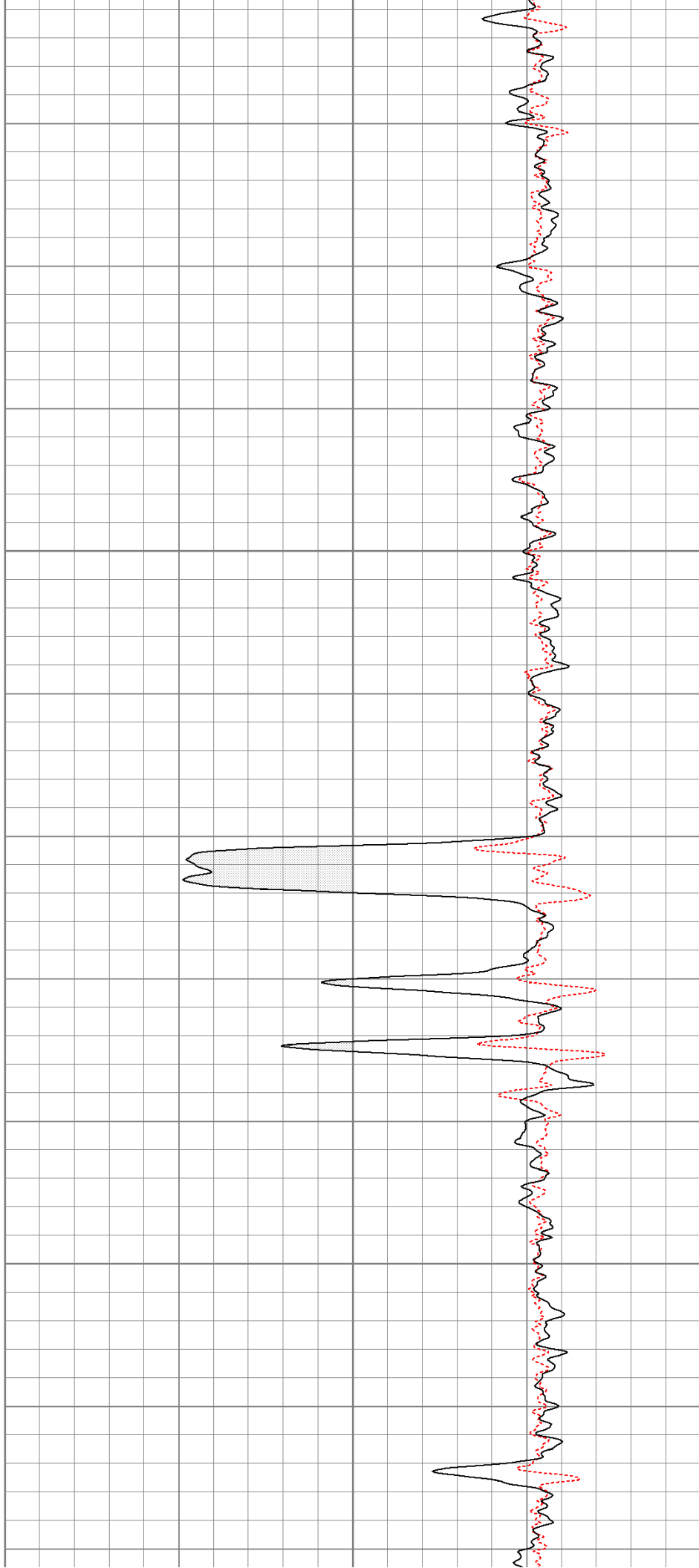
1950

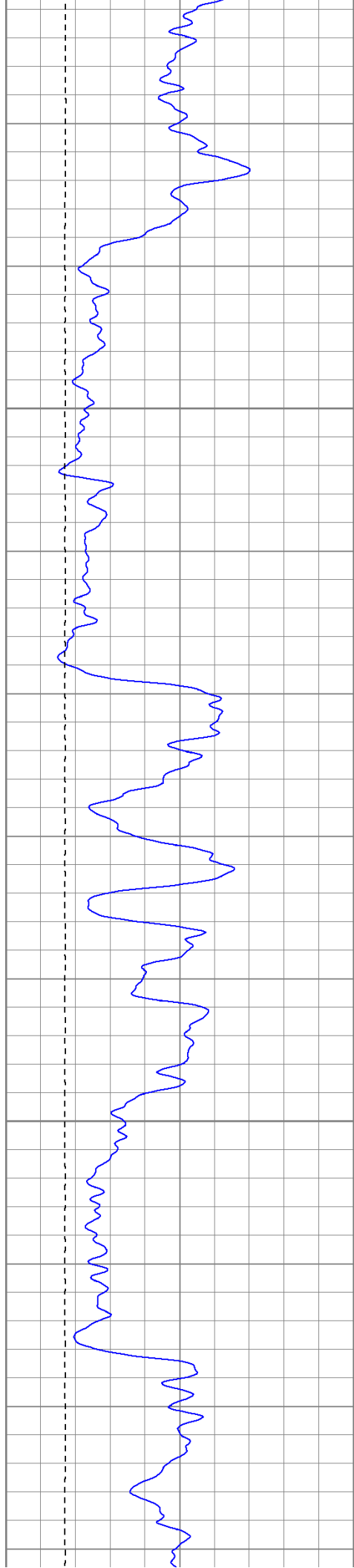




2000

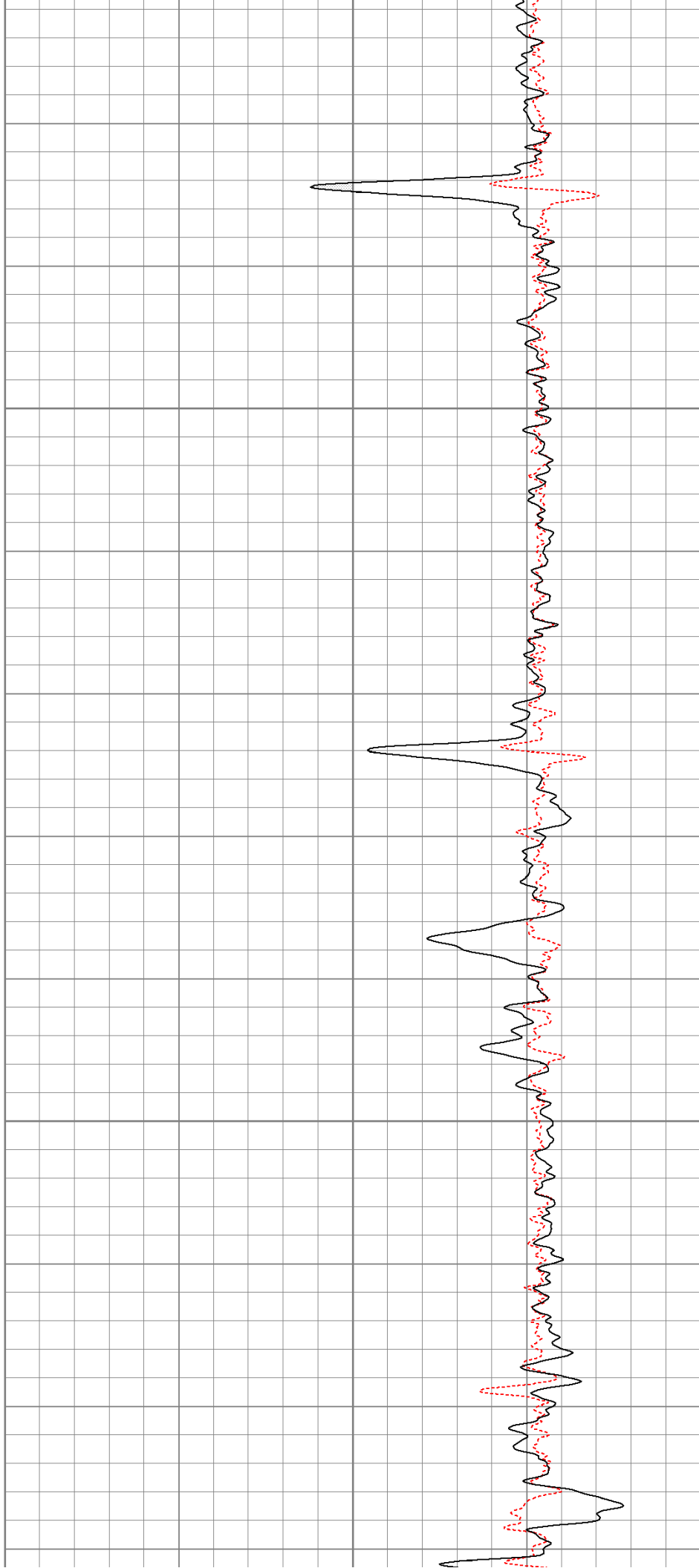
2050

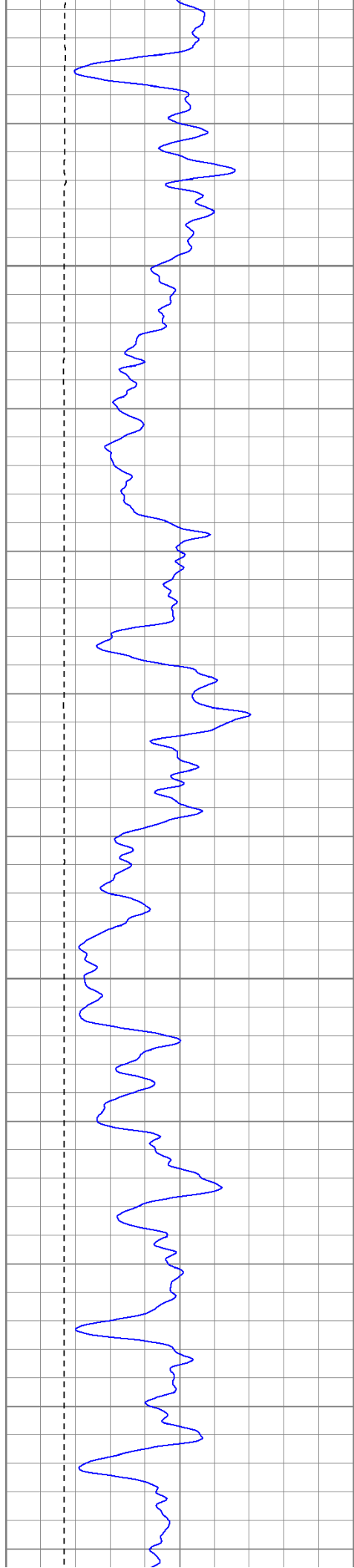




2100

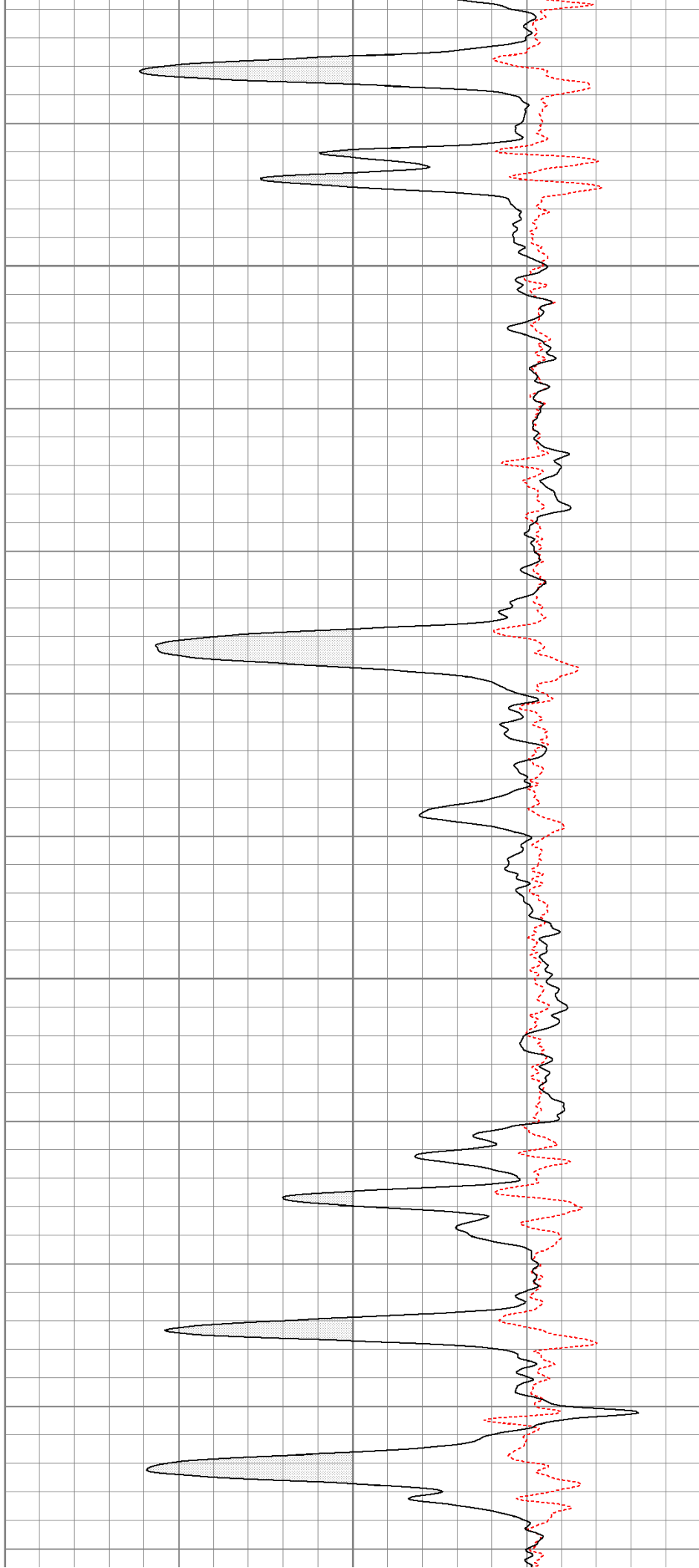
2150

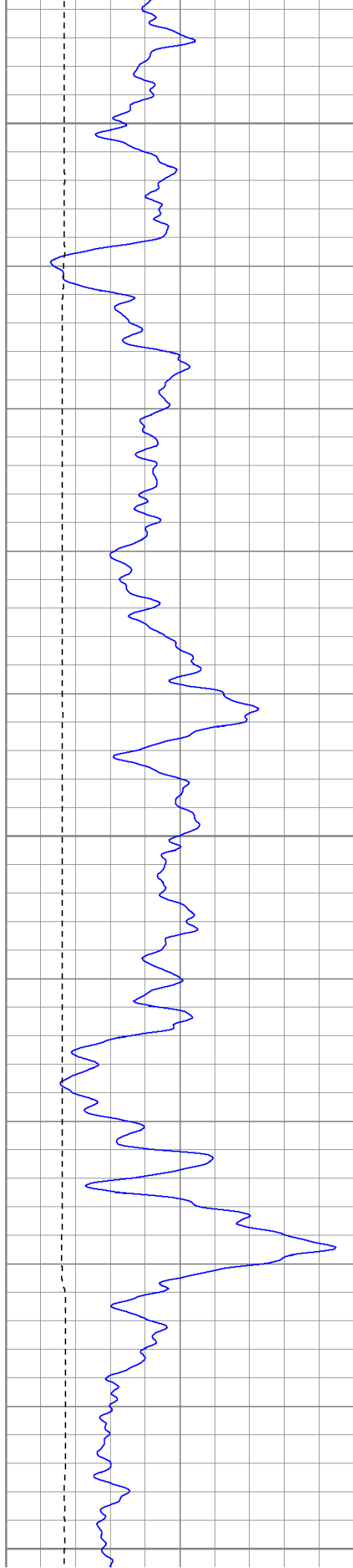




2200

2250

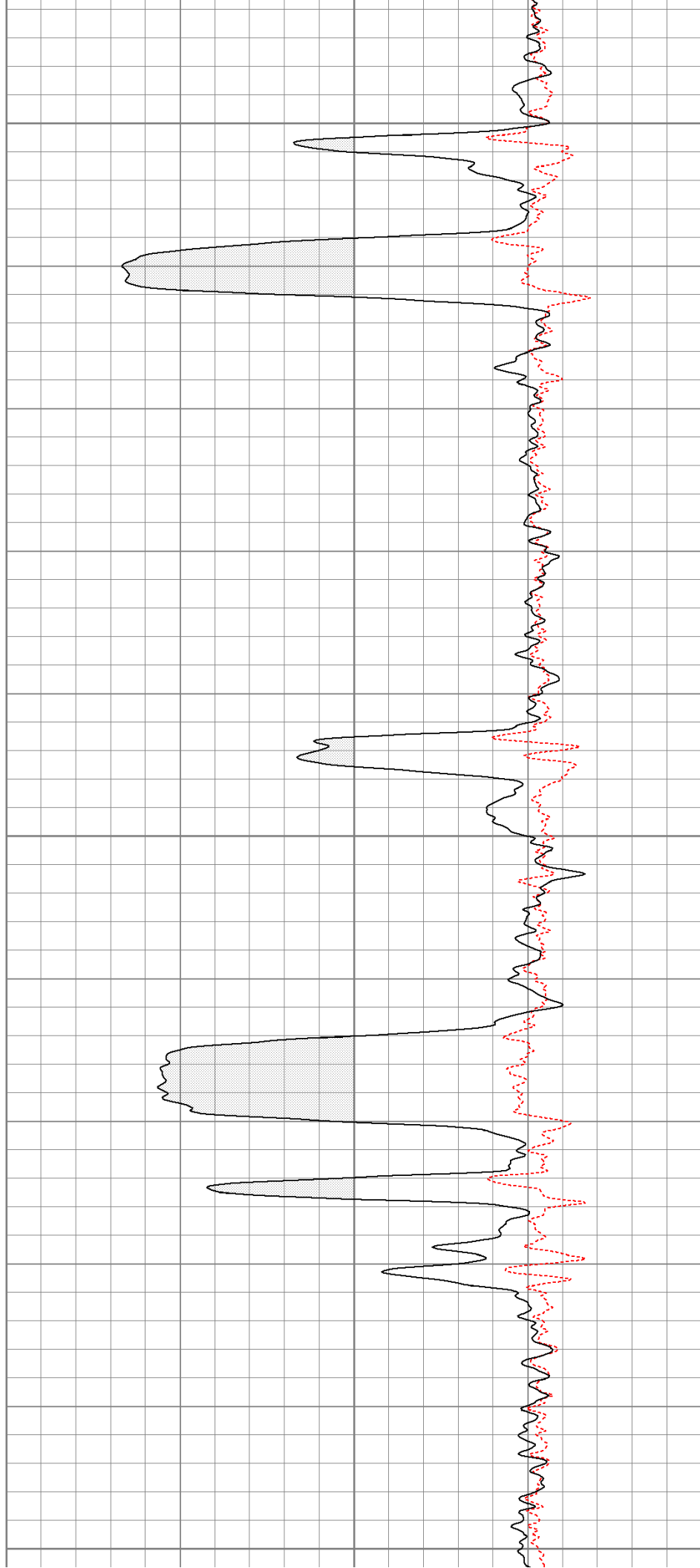


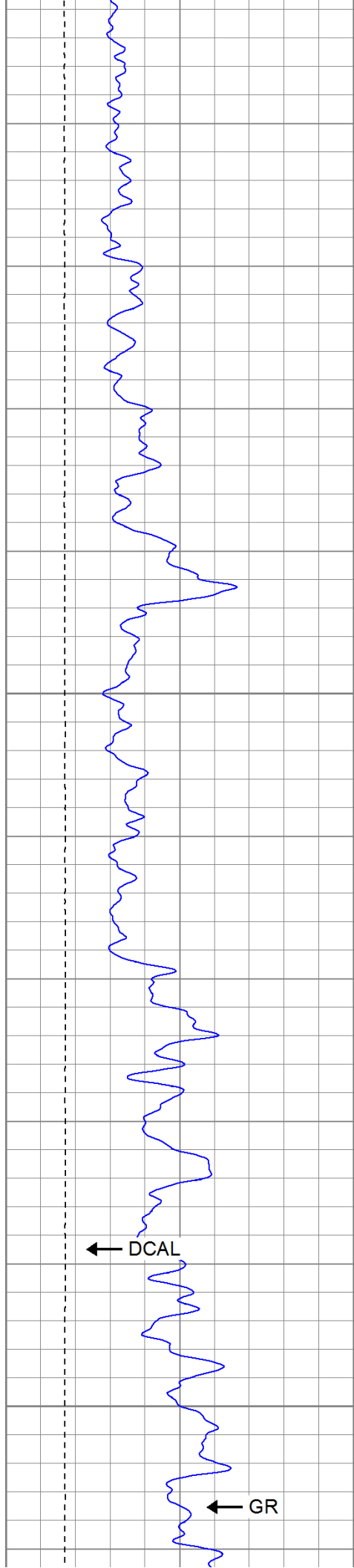


2300

2350

2400



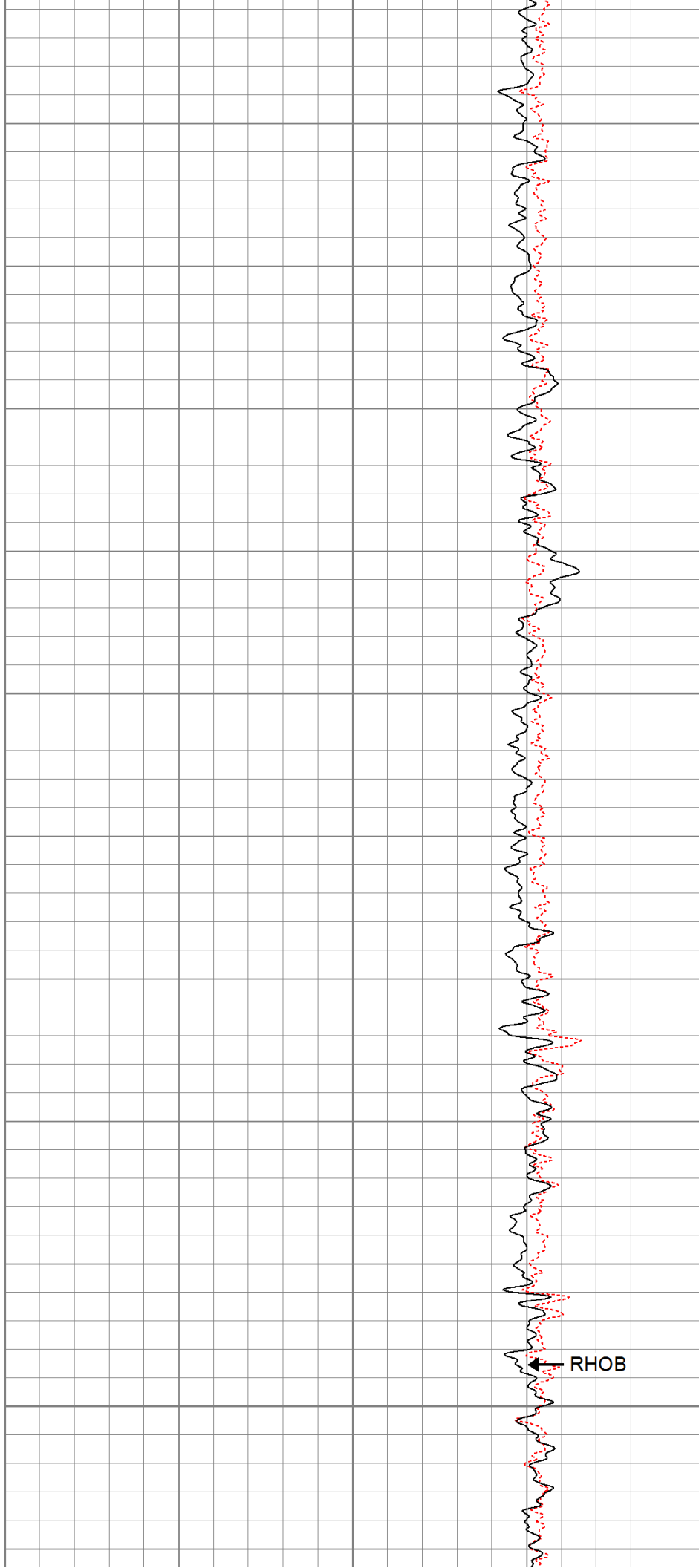


2450

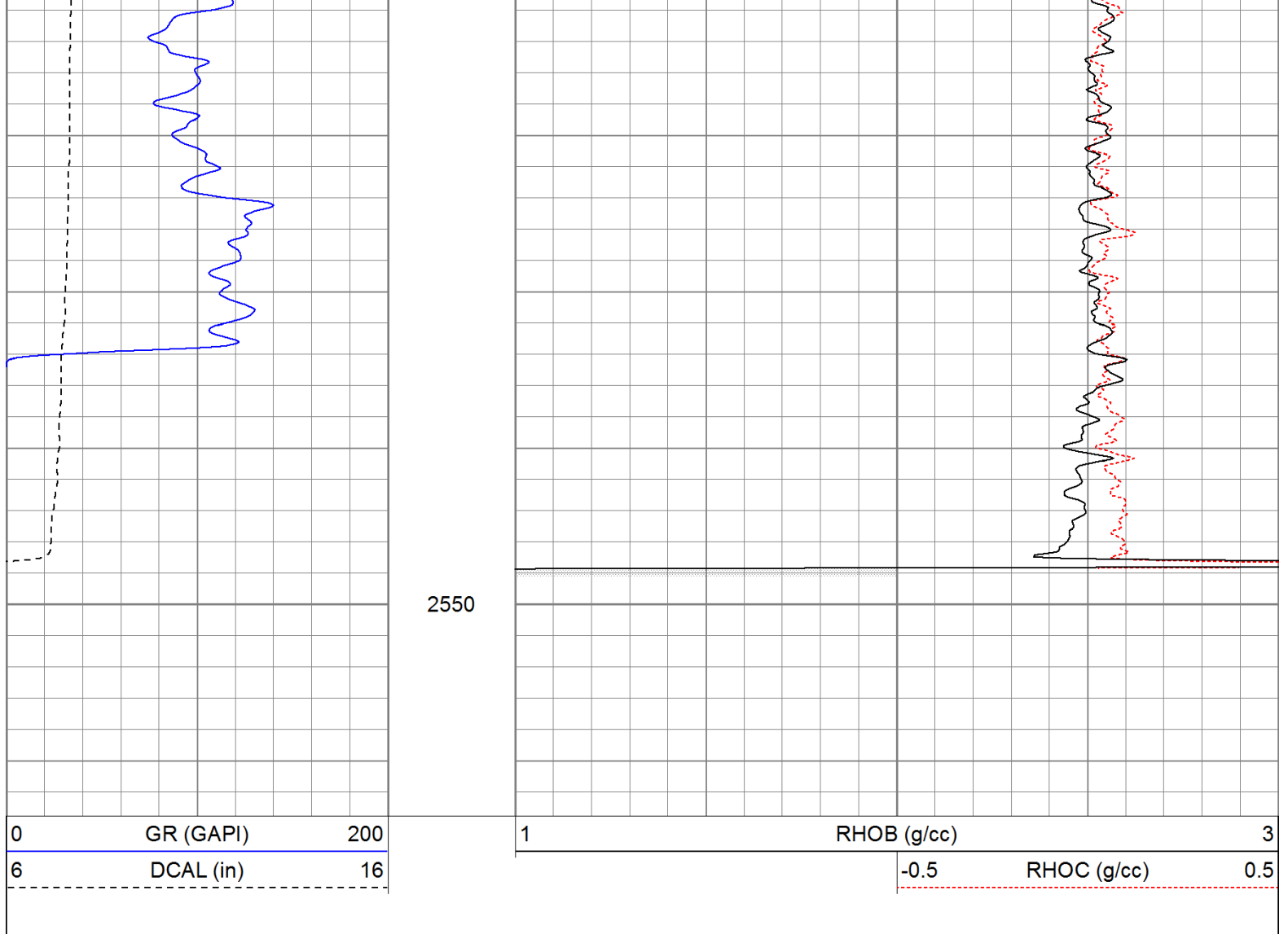
← DCAL

2500

← GR



← RHOB



Calibration Report

Database File: hunter22-17.db
 Dataset Pathname: pass1
 Dataset Creation: Thu Oct 27 02:43:15 2011 by Log Open-Cased 110302

Induction Tool Calibration Report

Serial Number: 701
 Tool Model: Probe
 Downhole Cal Performed: Wed Jun 08 22:14:25 2011
 Surface Cal Performed: Wed Jun 08 22:14:40 2011
 After Survey Verification Performed:

Surface Calibration:	Air	Loop	
Conductivity Reference:	0.000	500.000	mmho
Conductivity Reading:	0.006	0.644	V
Internal Reference:	Zero	Cal	
Conductivity Reference:	0.000	500.000	mmho
Conductivity Reading:	0.007	0.643	V

Downhole Calibration:	Internal Zero	Internal Cal	
Conductivity Reference:	0.703	499.163	mmho
Conductivity Reading:	0.000	0.000	V
Short Normal Reference:	0.000	20.000	Ohm-m
Short Normal Reading:	0.005	0.214	V

Results:	Gain	Offset
Loop Conductivity:	783.886	-4.674
Downhole Correction:	1.000	0.000
Short Normal Correction:	0.000	0.000

Short Normal Resistivity:		95.281	-2.000	
After Survey Verification		Internal Zero	Internal Cal	
Conductivity Reading:		0.000	0.000	V
Conductivity Result:		0.000	0.000	mmho
Short Normal Reading:		0.000	0.000	V
Short Normal Result:		0.000	0.000	Ohm-m
Compensated Density Calibration Report				
Serial-Model:		901-2.75POH		
Source / Verifier:		/		
Master Calibration Performed:		Mon Oct 10 09:20:39 2011		
Before Survey Verification Performed:				
After Survey Verification Performed:				
Master Calibration				
	Density		Far Detector	Near Detector
Magnesium	1.710 g/cc		1001.79	578.48 cps
Aluminum	2.590 g/cc		180.36	300.39 cps
Spine Angle = 69.08		Density/Spine Ratio = 0.479		
	Size		Reading	
Small Ring	8.00 in		2.50	V
Large Ring	16.00 in		4.57	V
Before Survey Verification				
	Target		Measured	
		g/cc		g/cc
		g/cc		g/cc
		g/cc		g/cc
After Survey Verification				
	Target		Measured	
		g/cc		g/cc
		g/cc		g/cc
		g/cc		g/cc
Neutron Calibration Report				
Serial Number:	803			
Tool Model:	2.75POH			
Performed:	Mon Oct 10 09:27:42 2011			
Calibrator Value:	1	NAPI		
Calibrator Reading:	1	cps		
Sensitivity:	1	NAPI/cps		
Gamma Ray Calibration Report				
Serial Number:	804			
Tool Model:	2.75POH			
Performed:	Mon Oct 10 09:53:04 2011			
Calibrator Value:	1.0	GAPI		
Background Reading:	0.0	cps		
Calibrator Reading:	1.0	cps		
Sensitivity:	0.0000	GAPI		

Sensitivity:

0.6500

GAPI/cps

Sensor	Offset (ft)	Schematic	Description	Len (ft)	OD (in)	Wt (lb)	
GR	29.58		None	0.75	1.50	5.00	
			GR-2.75POH (804) Probe 2.75" Probe Open Hole Gamma Ray	3.73	2.75	43.00	
NEU	24.04		NEU-2.75POH (803) Probe Epithermal	4.75	2.75	58.00	
			CDL-2.75POH (901) Probe	8.43	2.75	106.00	
LSD	16.21						
DCAL	15.94						
SSD	15.69						
DIC	6.24		IEL-Probe (701)	13.46	2.75	93.00	
SP	2.25						
SN	1.71						

Dataset: hunter22-17.db: field/well/run1/pass1
Total Length: 31.11 ft
Total Weight: 305.00 lb
O.D. 2.75 in

