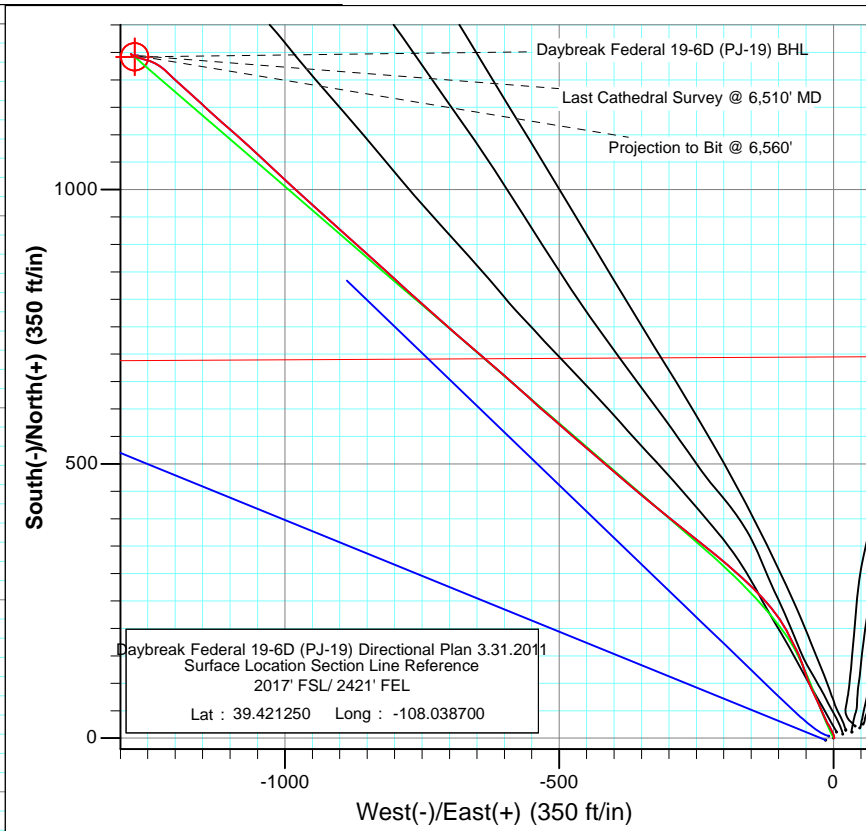
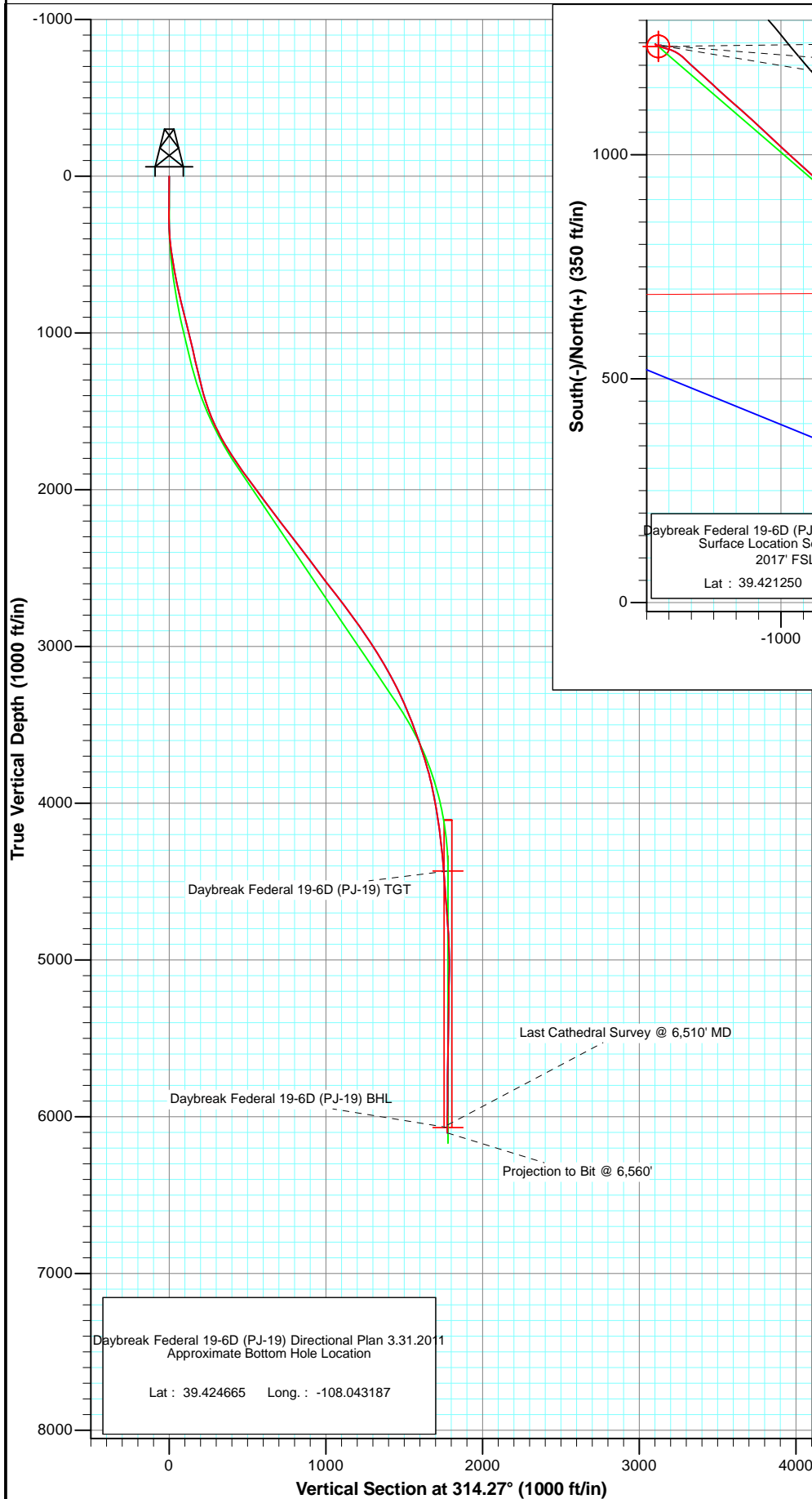




Project: S. Piceance (Parachute)  
 Site: NWSE S19-T7S-R95W (PJ-19 Pad)  
 Well: Daybreak Federal 19-6D (PJ-19) Directional Plan 3.31.2011  
 Wellbore: DD  
 Plan: FINAL



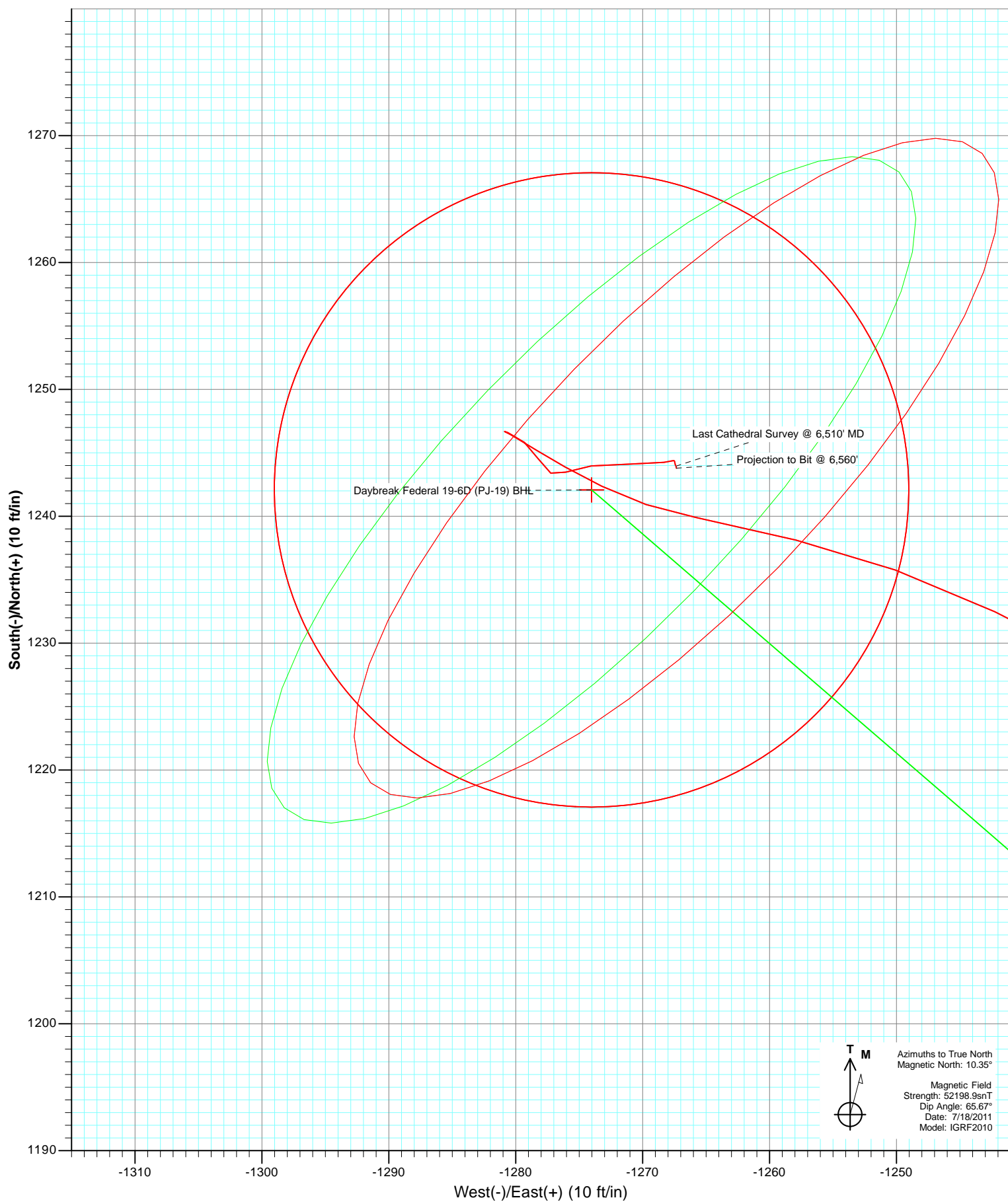
Azimuths to True North  
 Magnetic North: 10.35°

Magnetic Field  
 Strength: 52198.9nT  
 Dip Angle: 65.67°  
 Date: 7/18/2011  
 Model: IGRF2010

DESIGN DETAILS: DD				
Job#	115275 (SH), 115292 (MH); BH			
KBE @ 5449.0ft (Original Well Elev)				
Target	Azimuth	Origin Type	N/S	E/W
Daybreak Federal 19-6D (PJ-19) BHL	314.27	Slot	0.0	0.0

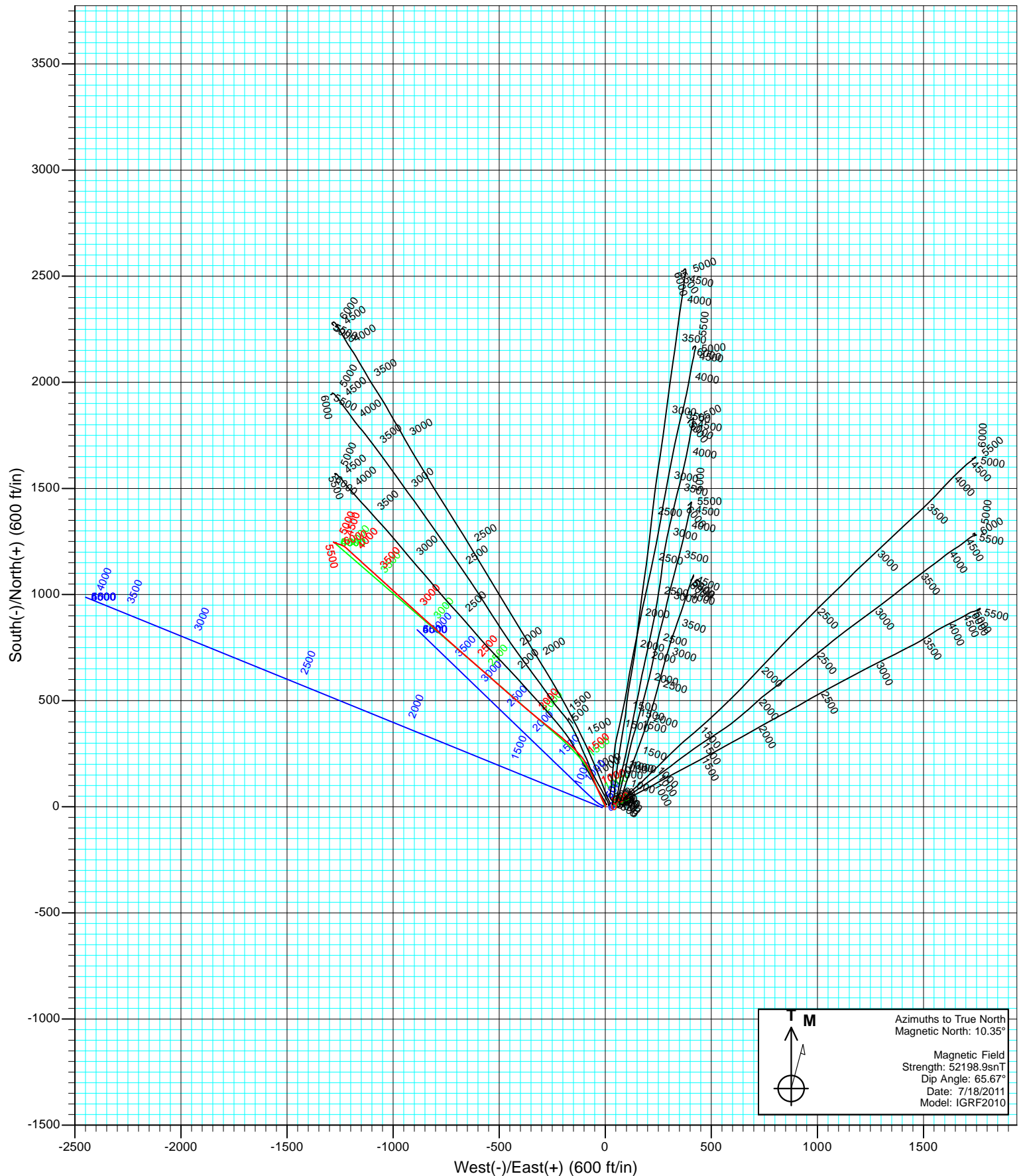


Project: S. Piceance (Parachute)  
Site: NWSE S19-T7S-R95W (PJ-19 Pad)  
Well: Daybreak Federal 19-6D (PJ-19) Directional Plan 3.31.2011  
Wellbore: DD  
Plan: FINAL





Project: S. Piceance (Parachute)  
Site: NWSE S19-T7S-R95W (PJ-19 Pad)  
Well: Daybreak Federal 19-6D (PJ-19) Directional Plan 3.31.2011  
Wellbore: DD  
Design: FINAL



# Cathedral Energy Services

## Survey Report

<b>Company:</b>	EnCana Oil & Gas (USA) Inc	<b>Local Co-ordinate Reference:</b>	Well Daybreak Federal 19-6D (PJ-19) Directional
<b>Project:</b>	S. Piceance (Parachute)	<b>TVD Reference:</b>	KBE @ 5449.0ft (Original Well Elev)
<b>Site:</b>	NWSE S19-T7S-R95W (PJ-19 Pad)	<b>MD Reference:</b>	KBE @ 5449.0ft (Original Well Elev)
<b>Well:</b>	Daybreak Federal 19-6D (PJ-19) Directional	<b>North Reference:</b>	True
<b>Wellbore:</b>	DD	<b>Survey Calculation Method:</b>	Minimum Curvature
<b>Design:</b>	DD	<b>Database:</b>	USA EDM 5000 Multi Users DB

<b>Project</b>	S. Piceance (Parachute), Garfield County, CO		
<b>Map System:</b>	US State Plane 1983	<b>System Datum:</b>	Mean Sea Level
<b>Geo Datum:</b>	North American Datum 1983		
<b>Map Zone:</b>	Colorado Central Zone		

<b>Site</b>	NWSE S19-T7S-R95W (PJ-19 Pad)			
<b>Site Position:</b>		<b>Northing:</b>	1,588,373.67 ft	<b>Latitude:</b> 39.421340
<b>From:</b>	Lat/Long	<b>Easting:</b>	2,283,011.65 ft	<b>Longitude:</b> -108.038360
<b>Position Uncertainty:</b>	0.0 ft	<b>Slot Radius:</b>	13.200 in	<b>Grid Convergence:</b> -1.60 °

<b>Well</b>	Daybreak Federal 19-6D (PJ-19) Directional Plan 3.31.2011			
<b>Well Position</b>	<b>+N/-S</b>	0.0 ft	<b>Northing:</b>	1,588,343.57 ft
	<b>+E/-W</b>	0.0 ft	<b>Easting:</b>	2,282,914.72 ft
<b>Position Uncertainty</b>	0.0 ft	<b>Wellhead Elevation:</b>	ft	<b>Ground Level:</b> 5,427.0 ft

<b>Wellbore</b>	DD				
<b>Magnetics</b>	<b>Model Name</b>	<b>Sample Date</b>	<b>Declination (°)</b>	<b>Dip Angle (°)</b>	<b>Field Strength (nT)</b>
	IGRF2010	7/18/2011	10.35	65.67	52,199

<b>Design</b>	DD			
<b>Audit Notes:</b>				
<b>Version:</b>	1.0	<b>Phase:</b>	ACTUAL	<b>Tie On Depth:</b> 0.0
<b>Vertical Section:</b>	<b>Depth From (TVD) (ft)</b>	<b>+N/-S (ft)</b>	<b>+E/-W (ft)</b>	<b>Direction (°)</b>
	0.0	0.0	0.0	314.27

<b>Survey Program</b>	<b>Date</b>	7/30/2011		
<b>From (ft)</b>	<b>To (ft)</b>	<b>Survey (Wellbore)</b>	<b>Tool Name</b>	<b>Description</b>
139.0	6,560.0	Survey #1 (DD)	MWD	Geolink MWD

<b>Survey</b>									
<b>Measured Depth (ft)</b>	<b>Inclination (°)</b>	<b>Azimuth (°)</b>	<b>Vertical Depth (ft)</b>	<b>+N/-S (ft)</b>	<b>+E/-W (ft)</b>	<b>Vertical Section (ft)</b>	<b>Dogleg Rate (°/100ft)</b>	<b>Build Rate (°/100ft)</b>	<b>Formations / Comments</b>
0.0	0.00	0.00	0.0	0.0	0.0	0.0	0.00	0.00	
139.0	0.30	122.70	139.0	-0.2	0.3	-0.4	0.22	0.22	
169.0	0.40	117.40	169.0	-0.3	0.5	-0.5	0.35	0.33	
200.0	0.60	100.40	200.0	-0.4	0.7	-0.8	0.80	0.65	
231.0	0.70	88.10	231.0	-0.4	1.1	-1.0	0.55	0.32	
262.0	0.60	56.10	262.0	-0.3	1.4	-1.2	1.20	-0.32	
293.0	1.50	5.40	293.0	0.2	1.6	-1.0	3.91	2.90	
324.0	2.50	346.60	324.0	1.3	1.4	-0.2	3.82	3.23	
354.0	3.70	345.00	353.9	2.8	1.0	1.2	4.01	4.00	
385.0	4.80	343.60	384.8	5.0	0.4	3.2	3.56	3.55	
416.0	5.90	337.70	415.7	7.8	-0.5	5.8	3.96	3.55	
447.0	6.90	329.20	446.5	10.8	-2.1	9.1	4.44	3.23	
478.0	8.50	334.80	477.2	14.5	-4.0	13.0	5.69	5.16	

# Cathedral Energy Services

## Survey Report

<b>Company:</b>	EnCana Oil & Gas (USA) Inc	<b>Local Co-ordinate Reference:</b>	Well Daybreak Federal 19-6D (PJ-19) Directional
<b>Project:</b>	S. Piceance (Parachute)	<b>TVD Reference:</b>	KBE @ 5449.0ft (Original Well Elev)
<b>Site:</b>	NWSE S19-T7S-R95W (PJ-19 Pad)	<b>MD Reference:</b>	KBE @ 5449.0ft (Original Well Elev)
<b>Well:</b>	Daybreak Federal 19-6D (PJ-19) Directional	<b>North Reference:</b>	True
<b>Wellbore:</b>	Open 3.31.2011	<b>Survey Calculation Method:</b>	Minimum Curvature
<b>Design:</b>	DD	<b>Database:</b>	USA EDM 5000 Multi Users DB

Survey									
Measured Depth (ft)	Inclination (°)	Azimuth (°)	Vertical Depth (ft)	+N/-S (ft)	+E/-W (ft)	Vertical Section (ft)	Dogleg Rate (°/100ft)	Build Rate (°/100ft)	Formations / Comments
508.0	9.10	336.60	506.9	18.7	-5.9	17.3	2.20	2.00	
539.0	9.30	326.40	537.5	23.0	-8.3	22.0	5.29	0.65	
570.0	10.10	331.50	568.0	27.5	-11.0	27.1	3.78	2.58	
600.0	10.80	334.10	597.5	32.3	-13.4	32.2	2.81	2.33	
692.0	12.60	336.60	687.6	49.3	-21.2	49.6	2.03	1.96	
784.0	14.50	334.70	777.1	68.9	-30.1	69.7	2.12	2.07	
877.0	15.80	335.30	866.8	91.0	-40.4	92.4	1.41	1.40	
969.0	14.50	340.70	955.6	113.2	-49.4	114.4	2.08	-1.41	
1,062.0	14.90	341.60	1,045.6	135.5	-57.0	135.5	0.50	0.43	
1,154.0	13.50	334.10	1,134.8	156.4	-65.5	156.1	2.51	-1.52	
1,195.0	13.90	333.40	1,174.6	165.1	-69.8	165.2	1.06	0.98	
1,289.0	14.68	332.38	1,265.7	185.8	-80.3	187.2	0.87	0.83	
1,384.0	14.81	329.57	1,357.6	206.9	-92.1	210.4	0.77	0.14	
1,438.0	16.70	326.23	1,409.6	219.3	-99.9	224.6	3.88	3.50	
1,533.0	20.48	318.76	1,499.6	243.2	-118.4	254.6	4.70	3.98	
1,629.0	24.87	314.98	1,588.2	270.1	-143.8	291.5	4.82	4.57	
1,724.0	28.52	312.69	1,673.0	299.6	-174.6	334.2	3.99	3.84	
1,820.0	32.39	308.48	1,755.8	331.2	-211.6	382.7	4.60	4.03	
1,916.0	35.82	309.27	1,835.2	365.0	-253.5	436.3	3.60	3.57	
2,011.0	35.33	308.12	1,912.5	399.5	-296.6	491.3	0.87	-0.52	
2,105.0	36.21	309.71	1,988.8	434.0	-339.4	546.0	1.36	0.94	
2,200.0	36.96	311.02	2,065.1	470.7	-382.5	602.5	1.14	0.79	
2,296.0	36.87	310.32	2,141.8	508.3	-426.2	660.0	0.45	-0.09	
2,390.0	37.79	311.20	2,216.6	545.5	-469.4	716.9	1.13	0.98	
2,485.0	38.14	310.85	2,291.5	583.9	-513.5	775.2	0.43	0.37	
2,581.0	37.44	312.25	2,367.3	622.9	-557.5	834.0	1.15	-0.73	
2,676.0	37.31	311.29	2,442.8	661.3	-600.5	891.6	0.63	-0.14	
2,771.0	36.83	310.23	2,518.6	698.7	-643.9	948.8	0.84	-0.51	
2,866.0	37.35	311.46	2,594.4	736.1	-687.2	1,006.0	0.95	0.55	
2,961.0	38.10	311.81	2,669.5	774.8	-730.7	1,064.0	0.82	0.79	
3,056.0	36.74	311.99	2,745.0	813.3	-773.6	1,121.7	1.44	-1.43	
3,151.0	35.86	312.52	2,821.6	851.1	-815.3	1,177.9	0.98	-0.93	
3,247.0	35.33	311.38	2,899.6	888.5	-856.8	1,233.7	0.88	-0.55	
3,342.0	32.83	312.25	2,978.3	924.0	-896.5	1,286.9	2.68	-2.63	
3,437.0	32.17	311.81	3,058.4	958.1	-934.4	1,337.9	0.74	-0.69	
3,532.0	29.27	312.25	3,140.1	990.6	-970.5	1,386.4	3.06	-3.05	
3,627.0	27.55	313.40	3,223.6	1,021.3	-1,003.6	1,431.6	1.90	-1.81	
3,722.0	26.06	312.87	3,308.4	1,050.6	-1,034.9	1,474.4	1.59	-1.57	
3,817.0	22.90	312.25	3,394.9	1,077.3	-1,063.9	1,513.8	3.34	-3.33	
3,912.0	20.61	311.29	3,483.1	1,100.7	-1,090.1	1,548.9	2.44	-2.41	
4,007.0	19.56	311.90	3,572.3	1,122.4	-1,114.5	1,581.5	1.13	-1.11	
4,102.0	18.94	311.99	3,662.0	1,143.3	-1,137.8	1,612.8	0.65	-0.65	
4,197.0	16.04	313.40	3,752.6	1,162.6	-1,158.8	1,641.4	3.08	-3.05	
4,292.0	13.75	310.75	3,844.4	1,179.0	-1,176.9	1,665.7	2.51	-2.41	
4,387.0	11.03	313.13	3,937.2	1,192.6	-1,192.1	1,686.1	2.91	-2.86	
4,482.0	9.27	313.31	4,030.7	1,204.1	-1,204.3	1,702.8	1.85	-1.85	
4,577.0	9.01	312.96	4,124.5	1,214.4	-1,215.3	1,717.9	0.28	-0.27	
4,672.0	7.16	306.17	4,218.6	1,223.0	-1,225.5	1,731.2	2.19	-1.95	
4,767.0	5.36	297.14	4,313.0	1,228.5	-1,234.3	1,741.3	2.15	-1.89	
4,863.0	5.32	295.99	4,408.6	1,232.5	-1,242.2	1,749.8	0.12	-0.04	
4,958.0	4.97	289.23	4,503.2	1,235.8	-1,250.1	1,757.8	0.74	-0.37	
5,053.0	4.88	284.31	4,597.8	1,238.1	-1,257.9	1,765.0	0.45	-0.09	
5,148.0	4.97	281.14	4,692.5	1,239.9	-1,265.8	1,771.9	0.30	0.09	

# Cathedral Energy Services

## Survey Report

<b>Company:</b>	EnCana Oil & Gas (USA) Inc	<b>Local Co-ordinate Reference:</b>	Well Daybreak Federal 19-6D (PJ-19) Directional
<b>Project:</b>	S. Piceance (Parachute)	<b>TVD Reference:</b>	KBE @ 5449.0ft (Original Well Elev)
<b>Site:</b>	NWSE S19-T7S-R95W (PJ-19 Pad)	<b>MD Reference:</b>	KBE @ 5449.0ft (Original Well Elev)
<b>Well:</b>	Daybreak Federal 19-6D (PJ-19) Directional	<b>North Reference:</b>	True
<b>Wellbore:</b>	Open 3.31.2011	<b>Survey Calculation Method:</b>	Minimum Curvature
<b>Design:</b>	DD	<b>Database:</b>	USA EDM 5000 Multi Users DB

Survey									
Measured Depth (ft)	Inclination (°)	Azimuth (°)	Vertical Depth (ft)	+N/-S (ft)	+E/-W (ft)	Vertical Section (ft)	Dogleg Rate (°/100ft)	Build Rate (°/100ft)	Formations / Comments
5,244.0	4.39	296.70	4,788.2	1,242.4	-1,273.2	1,778.9	1.45	-0.60	
5,338.0	2.86	302.15	4,882.0	1,245.2	-1,278.4	1,784.6	1.67	-1.63	
5,434.0	0.57	292.57	4,977.9	1,246.7	-1,280.9	1,787.4	2.40	-2.39	
5,529.0	0.92	110.90	5,072.9	1,246.6	-1,280.6	1,787.2	1.57	0.37	
5,624.0	0.92	130.76	5,167.9	1,245.8	-1,279.3	1,785.7	0.33	0.00	
5,719.0	1.14	147.55	5,262.9	1,244.5	-1,278.2	1,784.0	0.39	0.23	
5,814.0	0.70	124.08	5,357.9	1,243.4	-1,277.2	1,782.5	0.60	-0.46	
5,909.0	0.97	61.24	5,452.9	1,243.5	-1,276.1	1,781.7	0.95	0.28	
6,004.0	1.58	85.41	5,547.8	1,244.0	-1,274.0	1,780.6	0.84	0.64	
6,099.0	2.24	88.40	5,642.8	1,244.1	-1,270.9	1,778.5	0.70	0.69	
6,195.0	0.83	82.95	5,738.7	1,244.3	-1,268.3	1,776.7	1.47	-1.47	
6,290.0	0.13	61.15	5,833.7	1,244.4	-1,267.5	1,776.3	0.75	-0.74	
6,385.0	0.13	199.67	5,928.7	1,244.3	-1,267.5	1,776.2	0.26	0.00	
6,481.0	0.26	150.71	6,024.7	1,244.1	-1,267.4	1,775.9	0.21	0.14	
6,510.0	0.18	166.97	6,053.8	1,244.0	-1,267.4	1,775.8	0.35	-0.28	Last Cathedral Survey @ 6,510' MD
6,560.0	0.18	166.97	6,103.7	1,243.8	-1,267.3	1,775.7	0.00	0.00	Projection to Bit @ 6,560'

Targets									
Target Name	Dip Angle (°)	Dip Dir. (°)	TVD (ft)	+N/-S (ft)	+E/-W (ft)	Northing (ft)	Easting (ft)	Latitude	Longitude
- hit/miss target									
- Shape									
Daybreak Federal 19-6C	0.00	0.00	6,069.0	1,242.1	-1,274.0	1,589,620.76	2,281,675.91	39.424660	-108.043210
- actual wellpath misses target center by 16.7ft at 6510.0ft MD (6053.8 TVD, 1244.0 N, -1267.4 E)									
- Circle (radius 25.0)									
Interp @ 1093.0 (Daybreak)	0.00	0.00	1,093.0	64.5	-19.9	1,588,408.61	2,282,896.67	39.421427	-108.038770
- actual wellpath misses target center by 89.5ft at 1088.4ft MD (1071.2 TVD, 141.9 N, -59.3 E)									
- Point									
Daybreak Federal 19-6C	0.00	0.00	4,432.0	1,242.1	-1,274.0	1,589,620.76	2,281,675.91	39.424660	-108.043210
- actual wellpath misses target center by 30.9ft at 4889.3ft MD (4434.8 TVD, 1233.5 N, -1244.4 E)									
- Point									
Interp @ 989.8 (Daybreak)	0.00	0.00	989.8	89.9	-38.6	1,588,434.55	2,282,878.66	39.421497	-108.038837
- actual wellpath misses target center by 33.4ft at 995.6ft MD (981.4 TVD, 119.5 N, -51.6 E)									
- Point									

Design Annotations					
Measured Depth (ft)	Vertical Depth (ft)	Local Coordinates			
		+N/-S (ft)	+E/-W (ft)	Comment	
6,510.0	6,053.8	1,244.0	-1,267.4	Last Cathedral Survey @ 6,510' MD	
6,560.0	6,103.7	1,243.8	-1,267.3	Projection to Bit @ 6,560'	

Checked By: _____	Approved By: _____	Date: _____
-------------------	--------------------	-------------