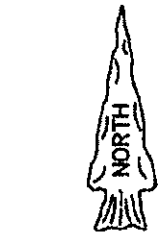
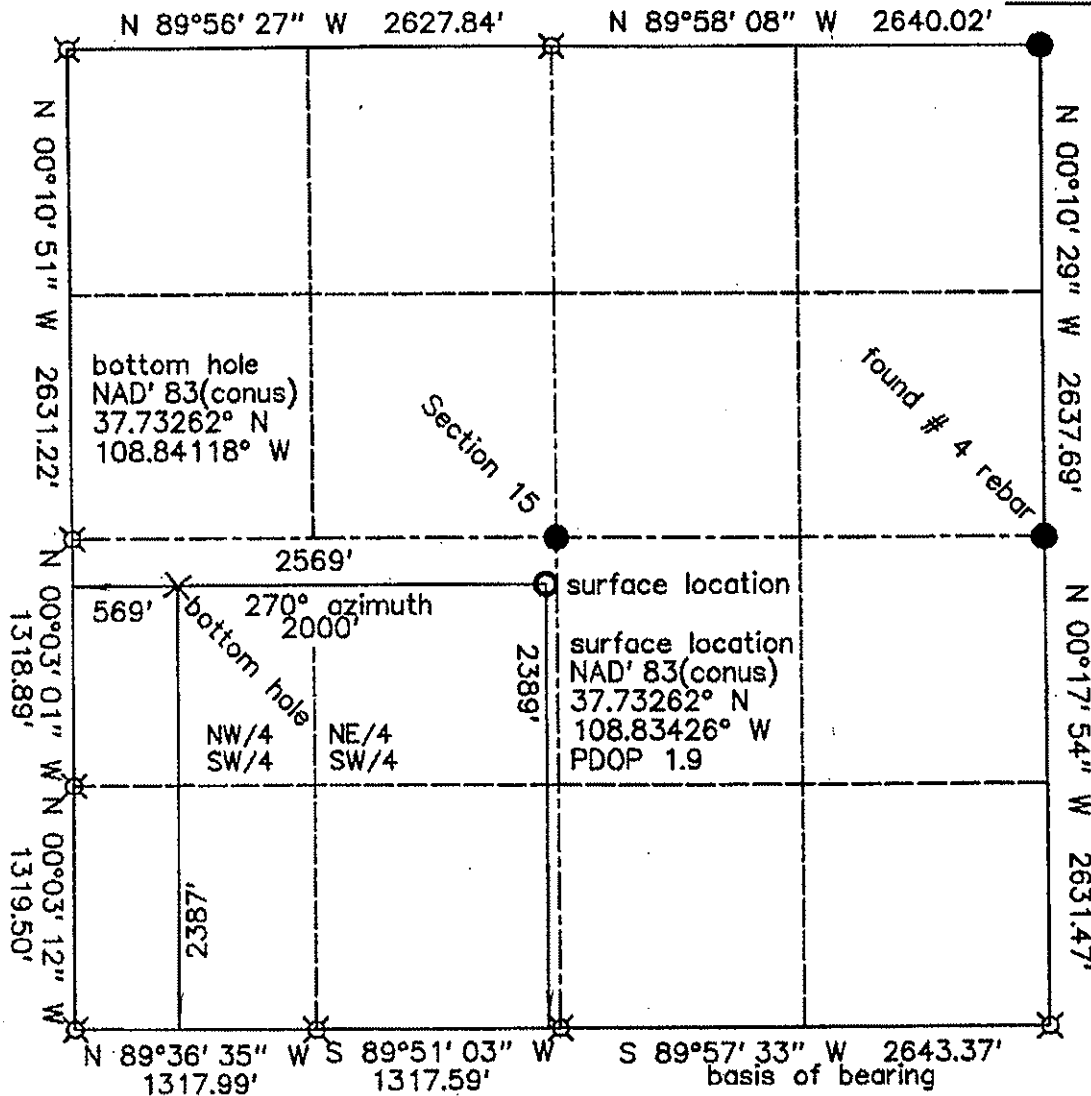


# WELL LOCATION PLAT



0' 1000'

Scale: 1" = 1000'

Basis of bearing is assumed from GPS True North, as shown.

⊗ standard GLO/BLM monument

● set standard monument

\* from GLO/BLM  
\*\* calculated

KINDER MORGAN CO2 COMPANY, LP

DC - 11

2389' FSL & 2569' FWL - surface location

Section 15, T.40 N., R.18 W., NMPM

Dolores County, CO

6999' grd. el. NAVD '88 (from OPUS)

2387' FSL & 569' FWL - bottom hole

Section 15, T.40 N., R.18 W., NMPM

## Notes:

- 1) Distances/dimensions are perpendicular to section/aliquot lines.
- 2) Surface use is Fee, CRP dry grassland.
- 3) GPS was corrected by OPUS, instrument operator was R.J. Caffey, CO LS 36562.
- 4) There are no improvements within 400 feet of pad, except fences on property lines, 60 feet east and 250 north of well bore location. There is a collapsed shed within 172. feet of the pad.



KNOW ALL MEN BY THESE PRESENTS that I, GERALD G. HUDDLESTON, do hereby certify that this plat was prepared from field notes of an actual survey made by me or under my supervision and that the same is true and accurate to the best of my knowledge and belief.

date of survey : 09/28/' 11  
date of plat : rev. 10/26/' 11