

# CEMENT BOND LOG

Company Pioneer Natural Res.  
Well Larissa 32-35  
Field Purgatoire River  
County Las Animas  
State Colorado

Company Pioneer Natural Resources  
Well Larissa 32-35  
Field Purgatoire River  
County Las Animas State Colorado

Location: API #: 05 071 09856 00

SEC 35 TWP 32S RGE 68W

2611' FNL & 1685' FEL

DEVI

Other Services

Permanent Datum Ground Level Elevation 7994'  
Log Measured From Kelly Bushing 9' Above G L  
Drilling Measured From Kelly Bushing

Elevation  
K.B. 8003'  
D.F.  
G.L. 7994'

Date				11-23-11			
Run Number				One			
Depth Driller				2580'			
Depth Logger				2527'			
Bottom Logged Interval				2525'			
Top Log Interval				Surface			
Open Hole Size				7 7/8"			
Type Fluid				Water			
Density / Viscosity				///			
Max. Recorded Temp.				///			
Estimated Cement Top				270'			
Time Well Ready				11:30 A.M.			
Time Logger on Bottom				11:45 A.M.			
Equipment Number				T440			
Location				Trinidad			
Recorded By				C. Sisneros			
Witnessed By				Mr. M Polley			
				</			

<<< Fold Here >>>

All interpretations are opinions based on inferences from electrical or other measurements and we cannot and do not guarantee the accuracy or correctness of any interpretation, and we shall not, except in the case of gross or willful negligence on our part, be liable or responsible for any loss, costs, damages, or expenses incurred or sustained by anyone resulting from any interpretation made by any of our officers, agents or employees. These interpretations are also subject to our general terms and conditions set out in our current Price Schedule.

## Comments

Main pass Ran Under 1000 PSI

Directions:

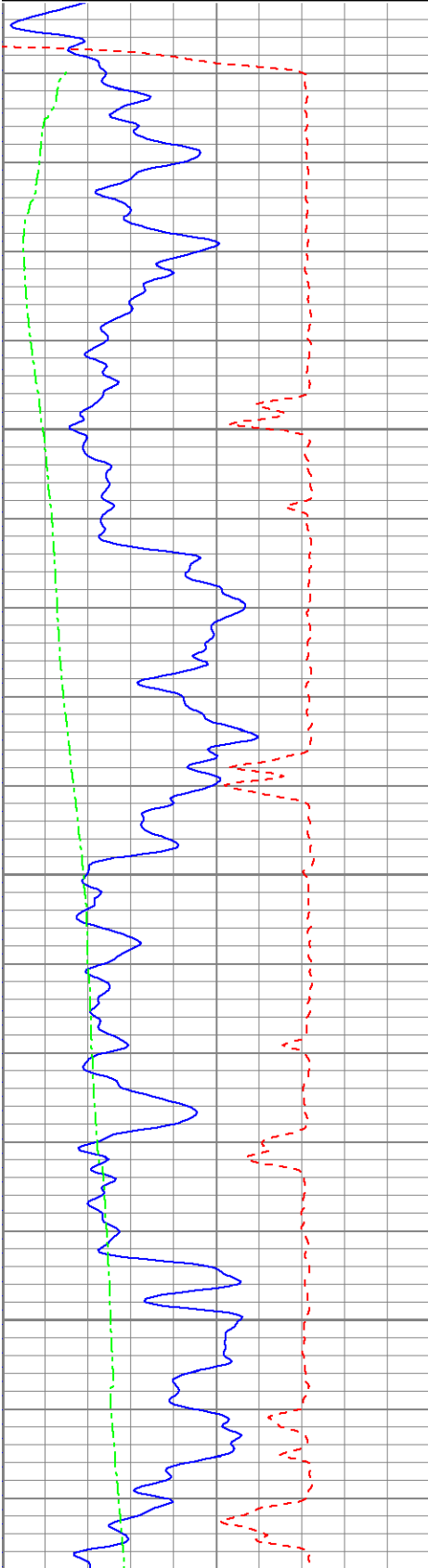
Wet Canyon, past Einstein at 4 way stay straight, next right, go thru gate and drive thru Julien location, take next left, at Y go right, drive thru Muleherder location, go thru gates, at Y stay left, y stay left, next y stay right, go thru gates, follow rd down hill, go thru gates by Flashback, stay straight drive past wooden wall, stay left, 2nd left, top hill to location.

Database File: larissa112311b.db  
Dataset Pathname: pass2  
Presentation Format: cbl  
Dataset Creation: Wed Nov 23 11:57:26 2011 by Log Open-Cased 071220  
Charted by: Depth in Feet scaled 1:240

0	GR (GAPI)	200
200	GR (GAPI)	400
400	TT3 (usec)	200
0	DEVI (°)	10

18	CCL	-2
0	AMP3 (mV)	100

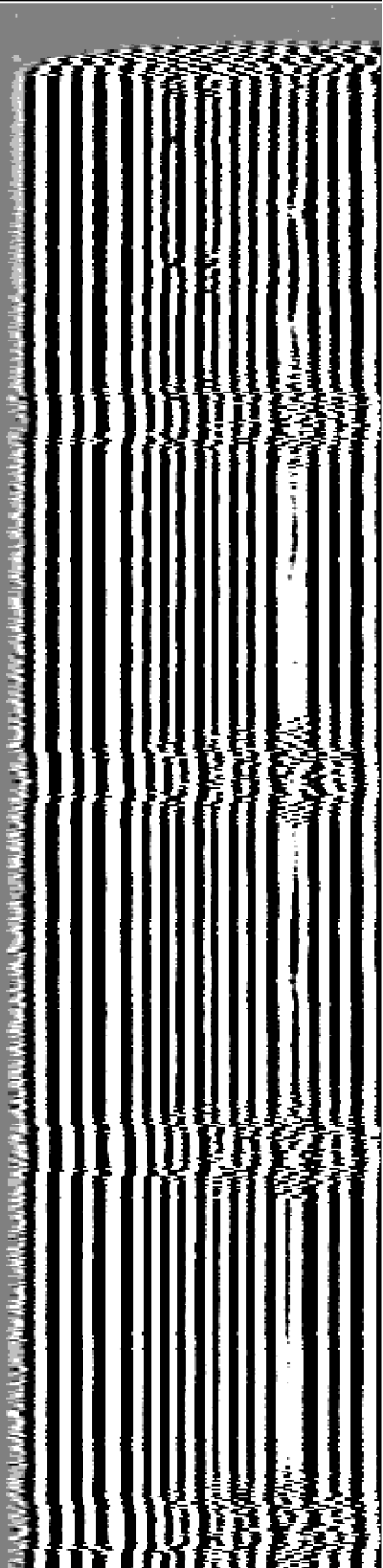
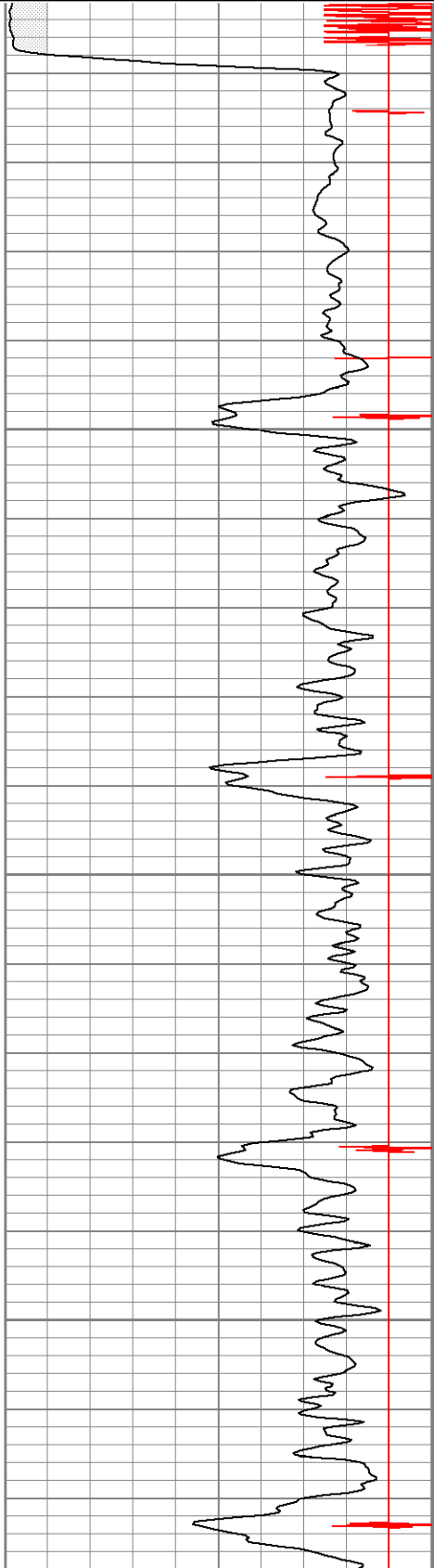
200 VDL 1200

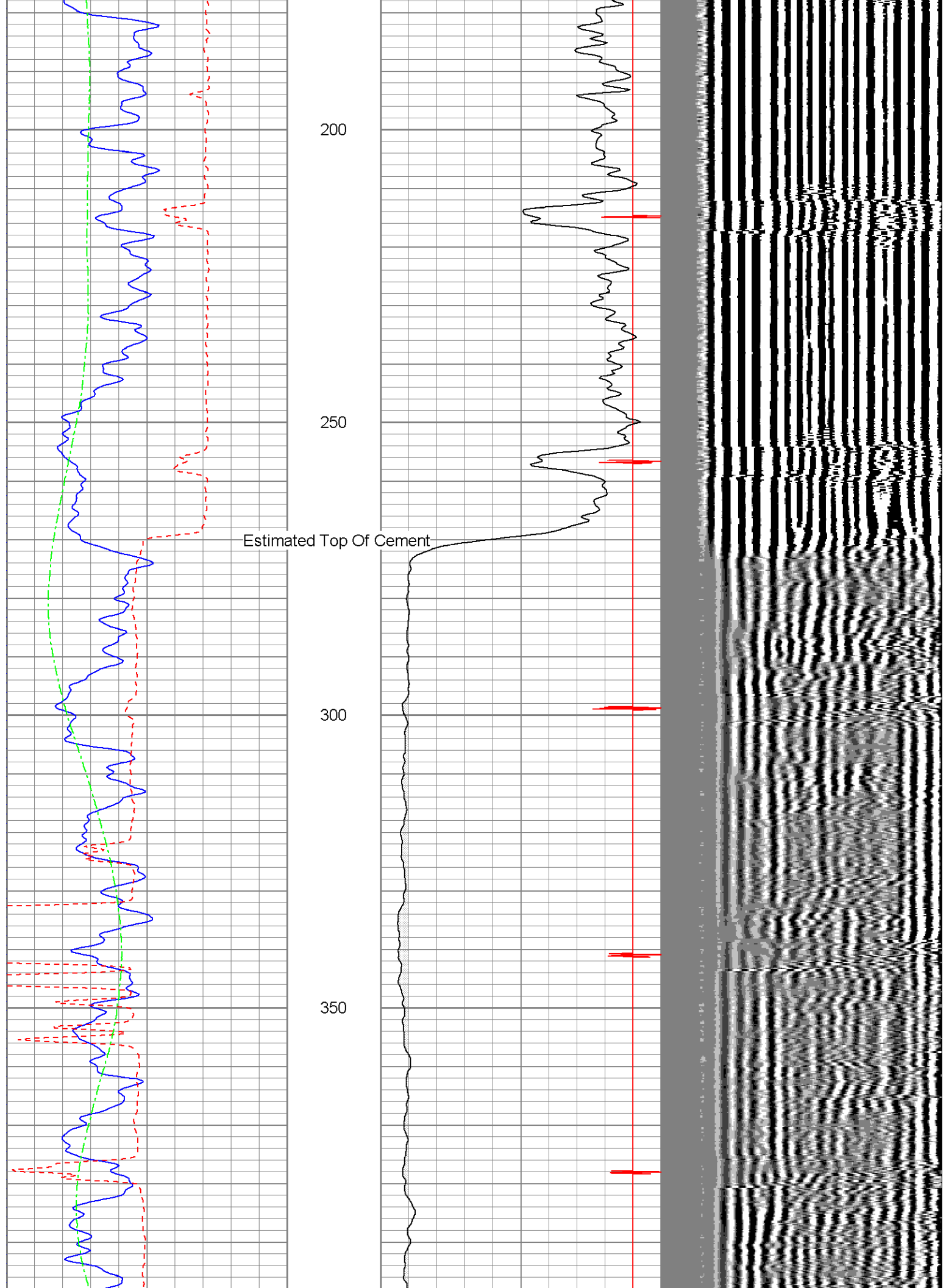


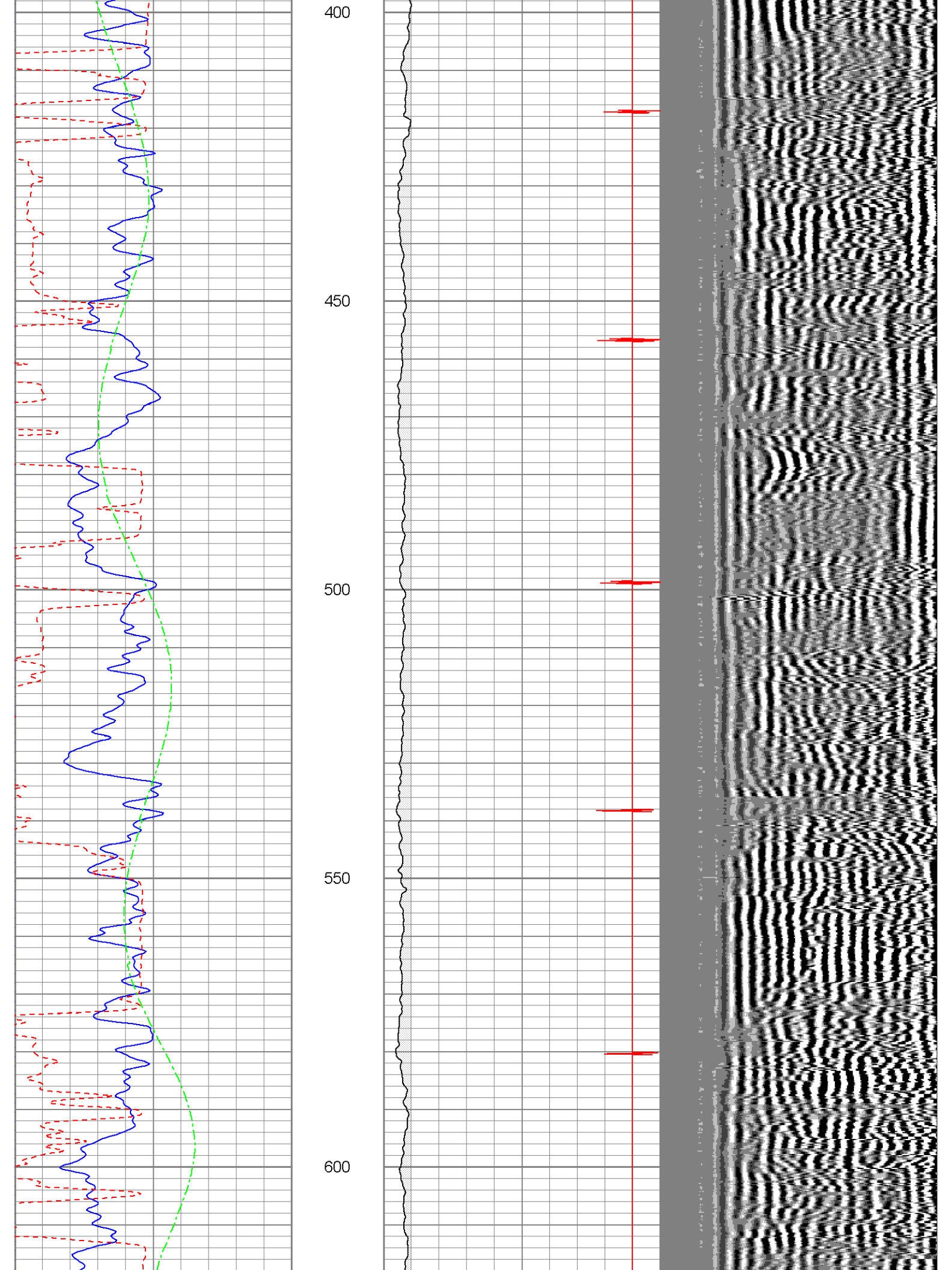
50

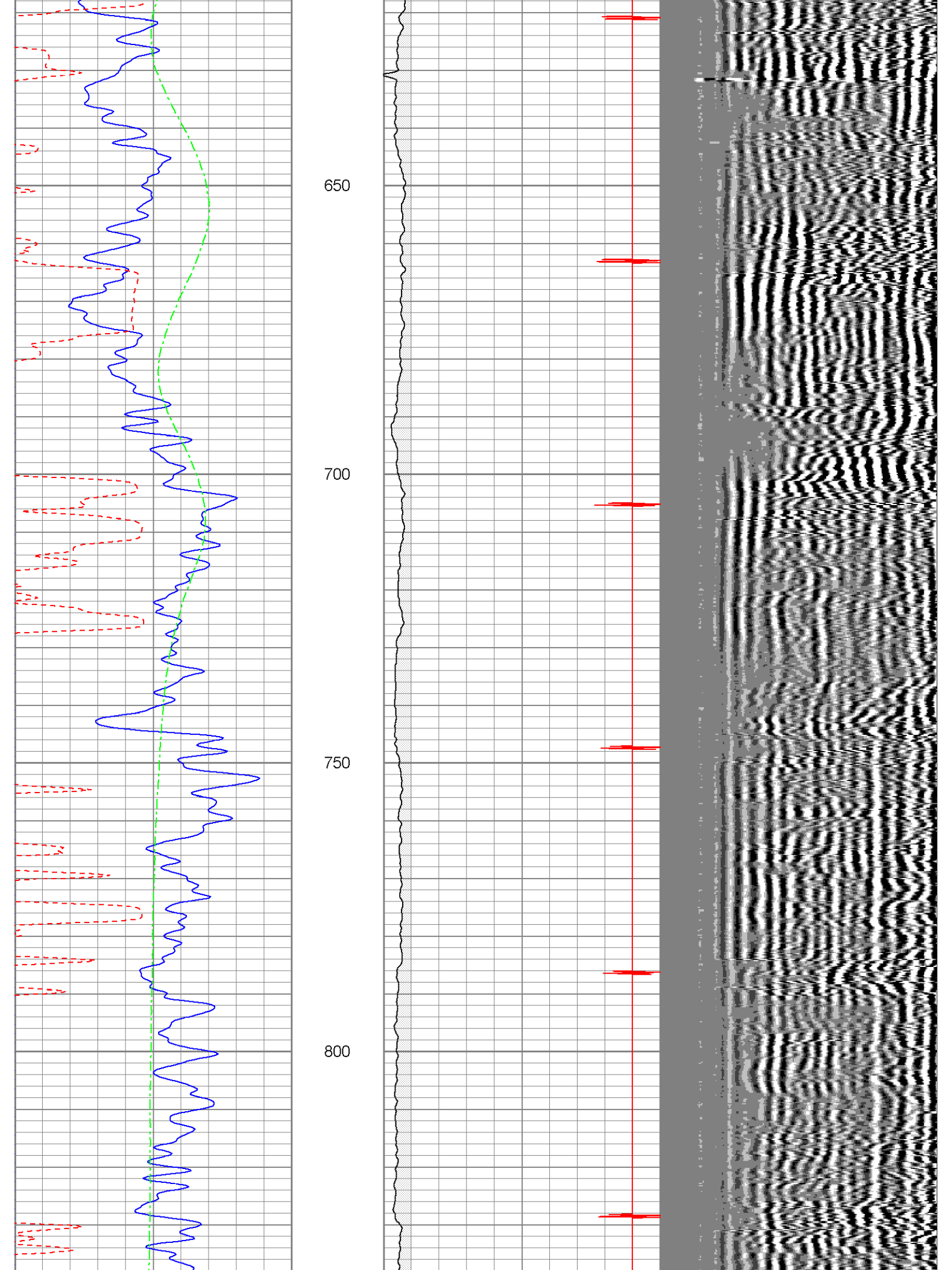
100

150

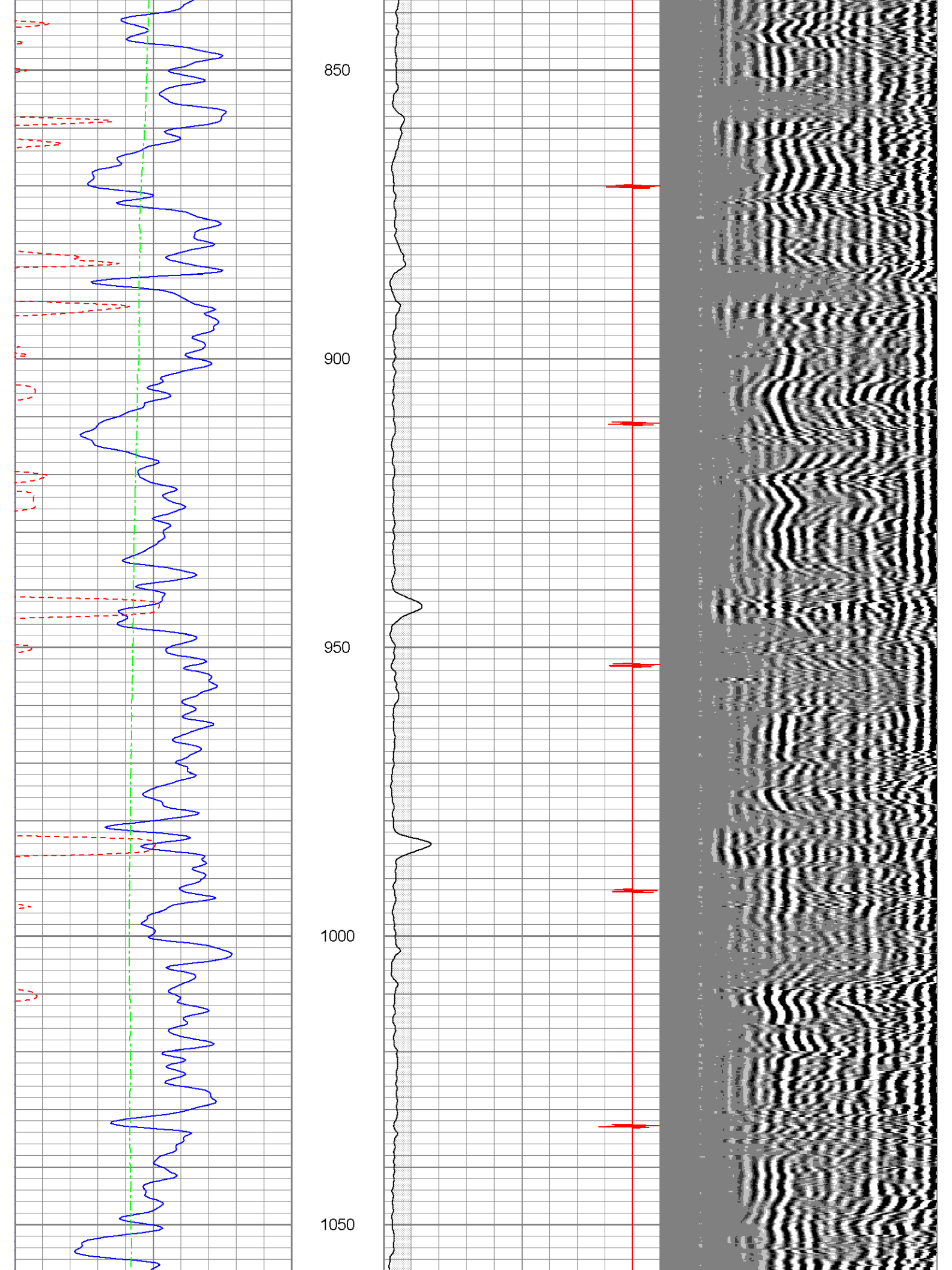


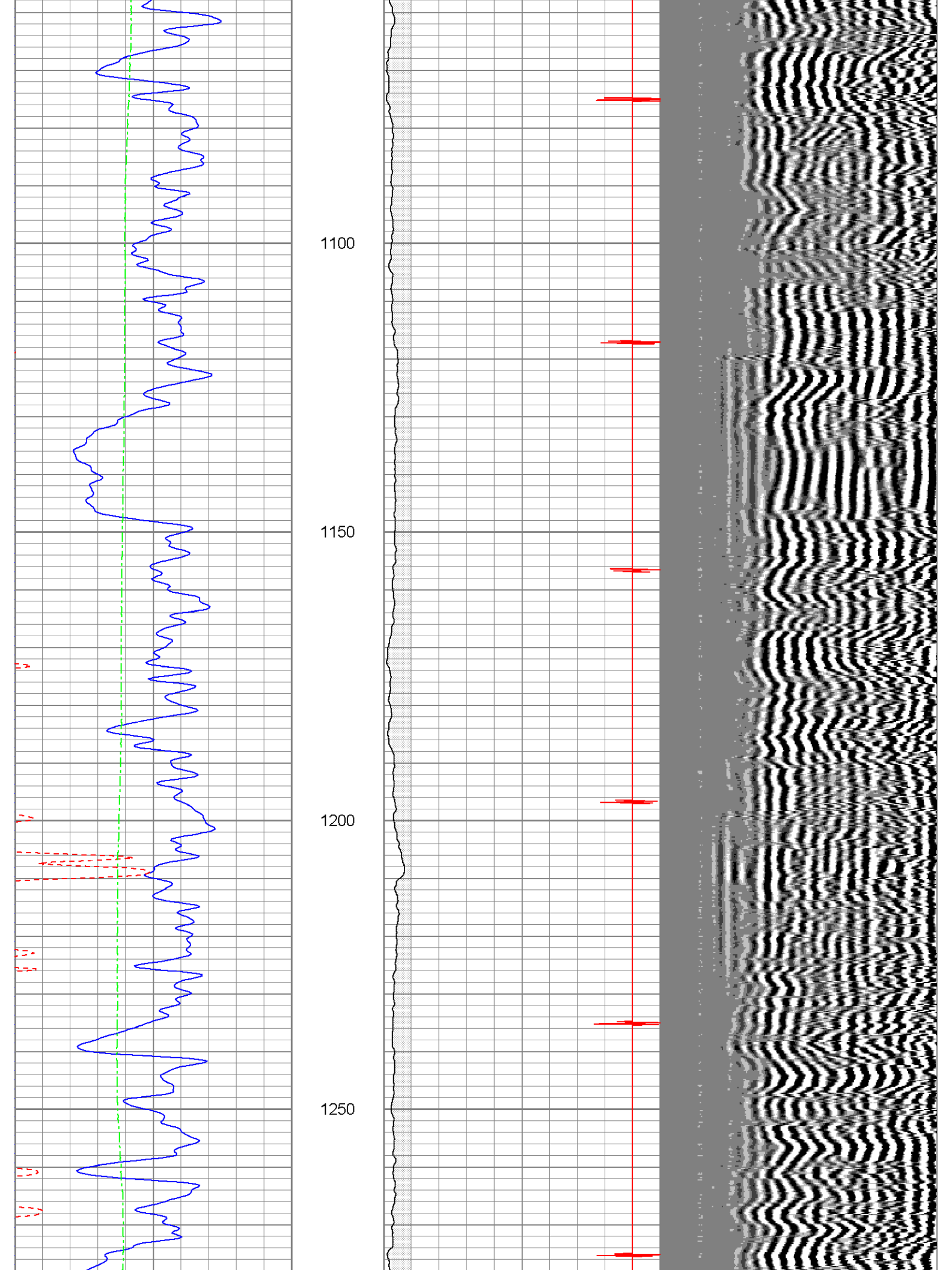


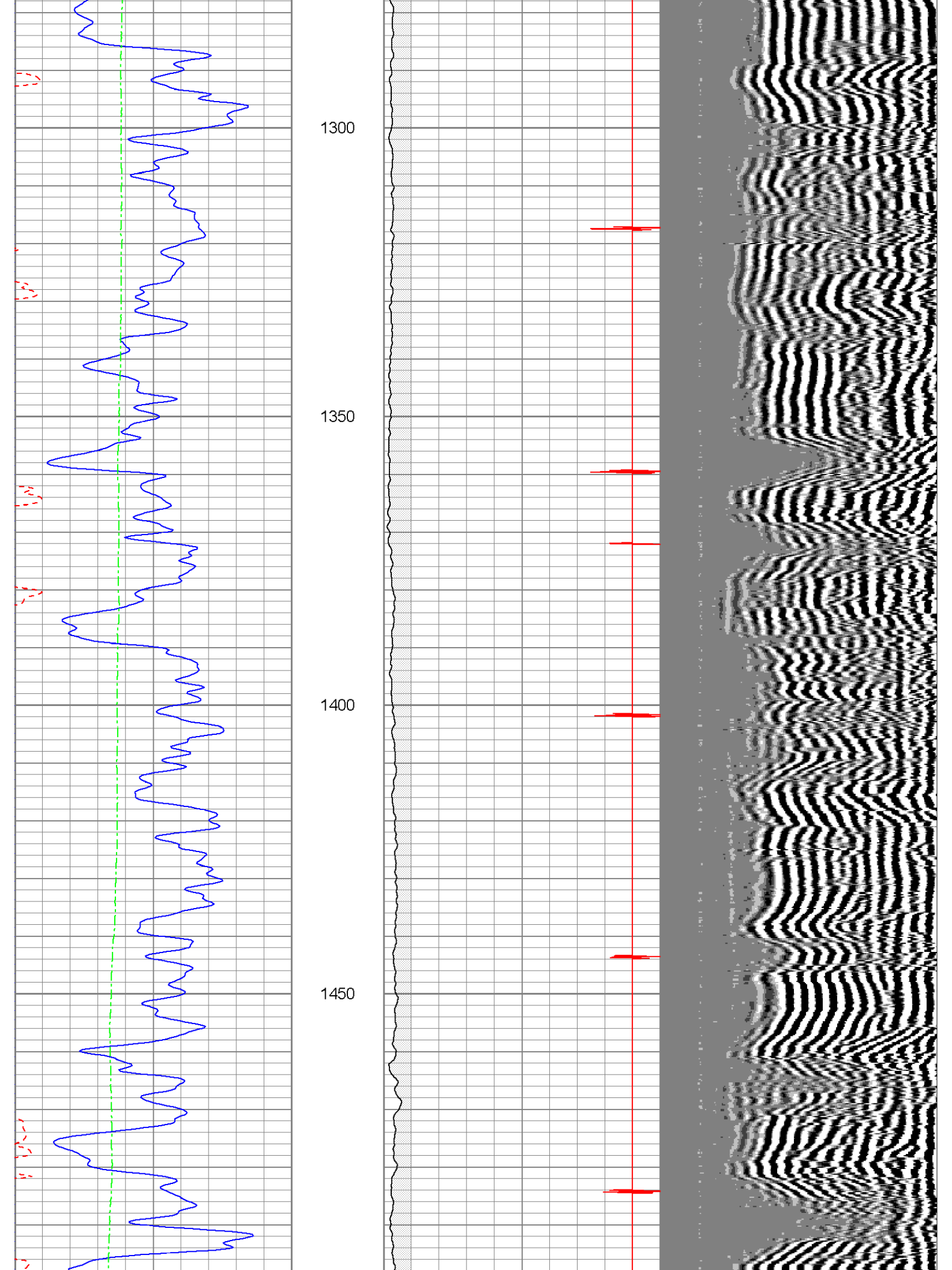




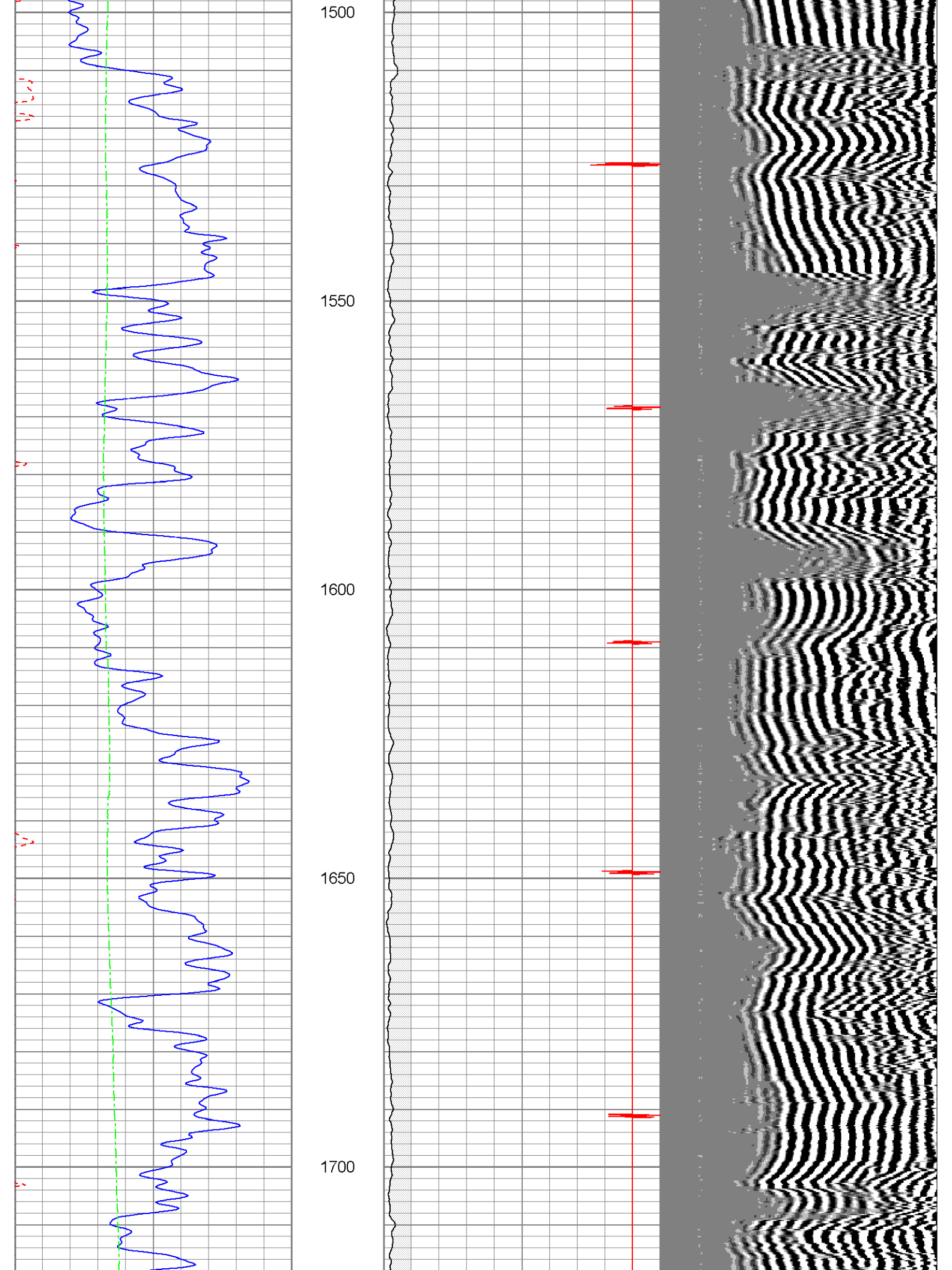


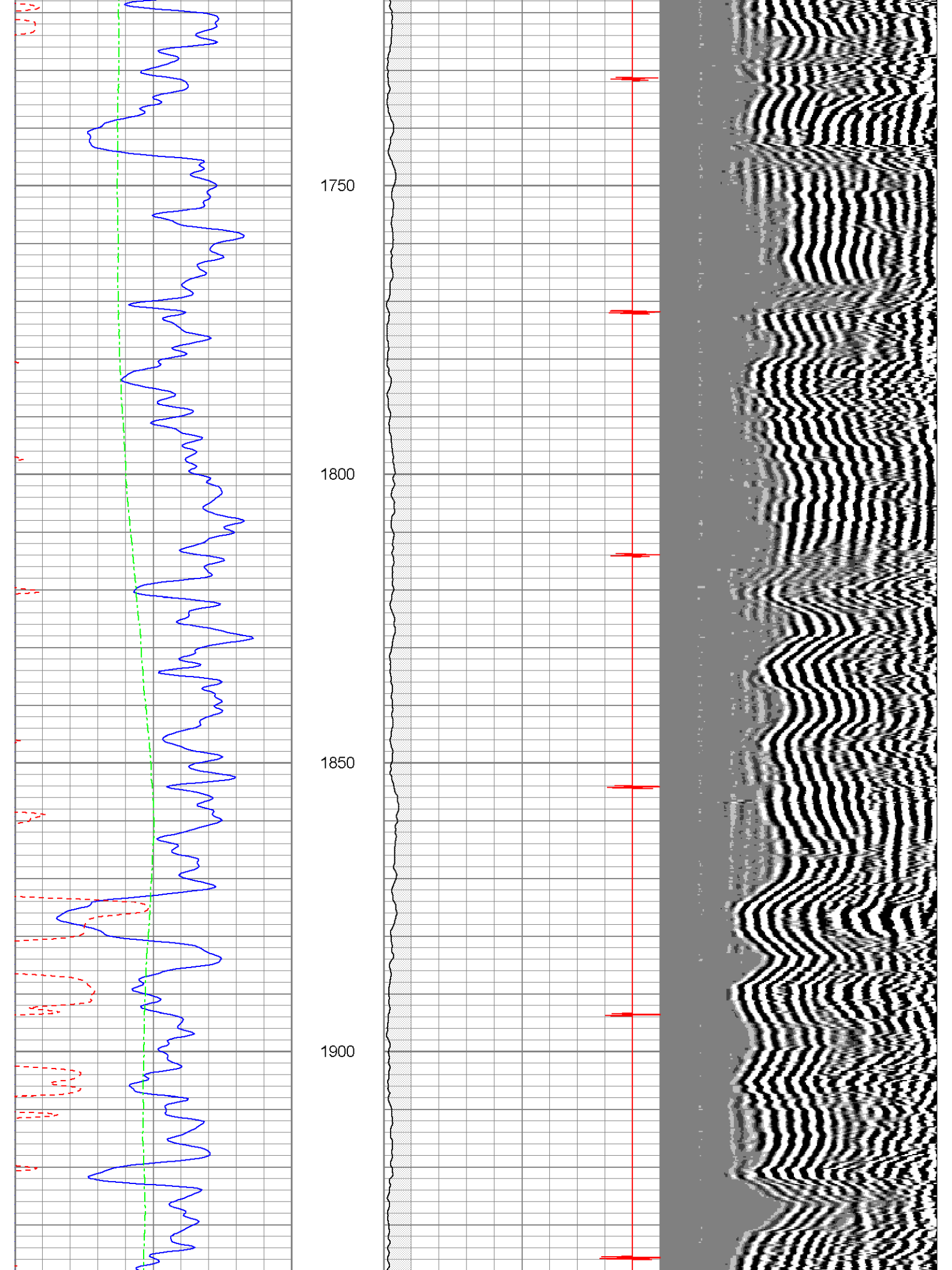


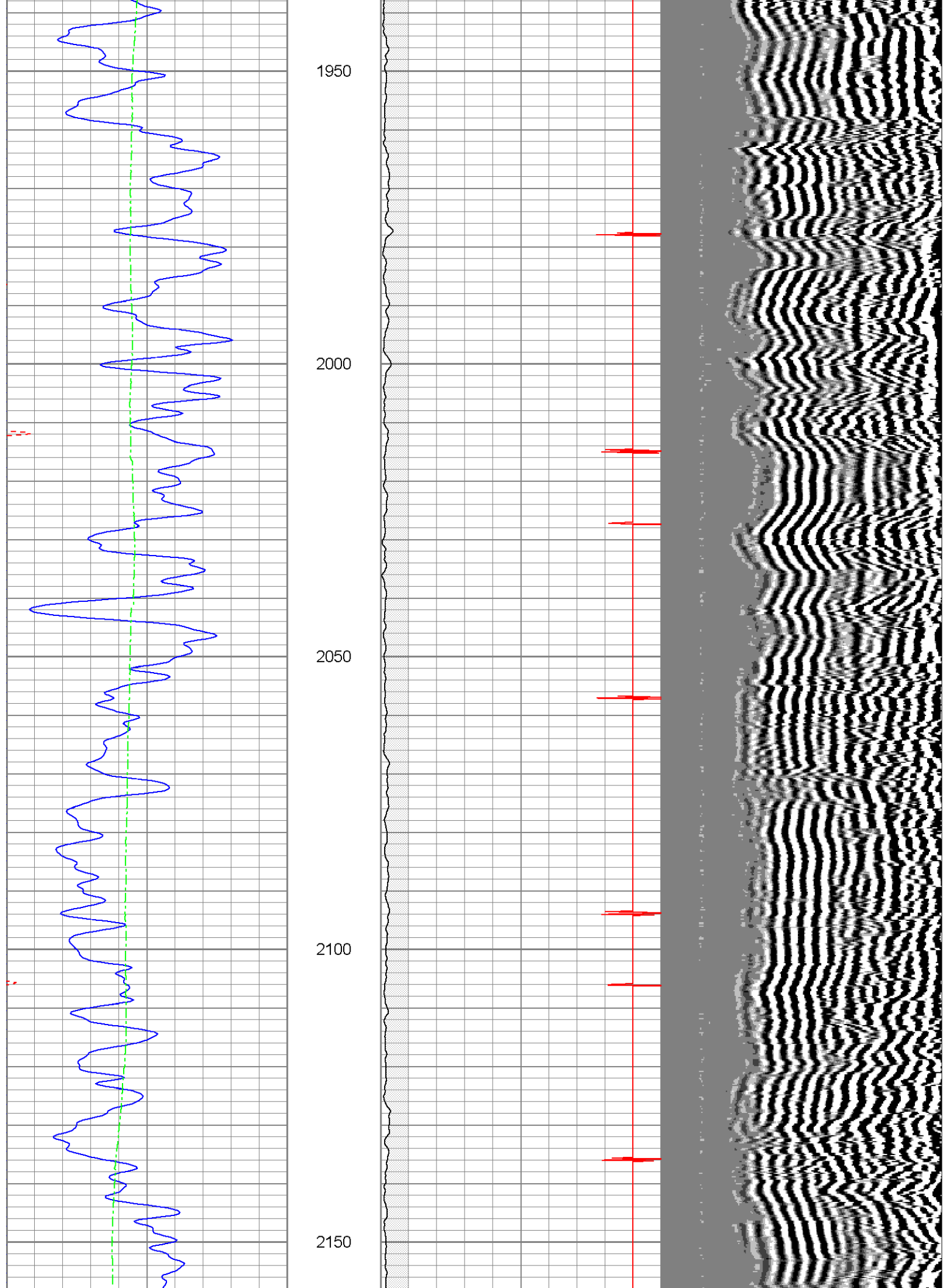


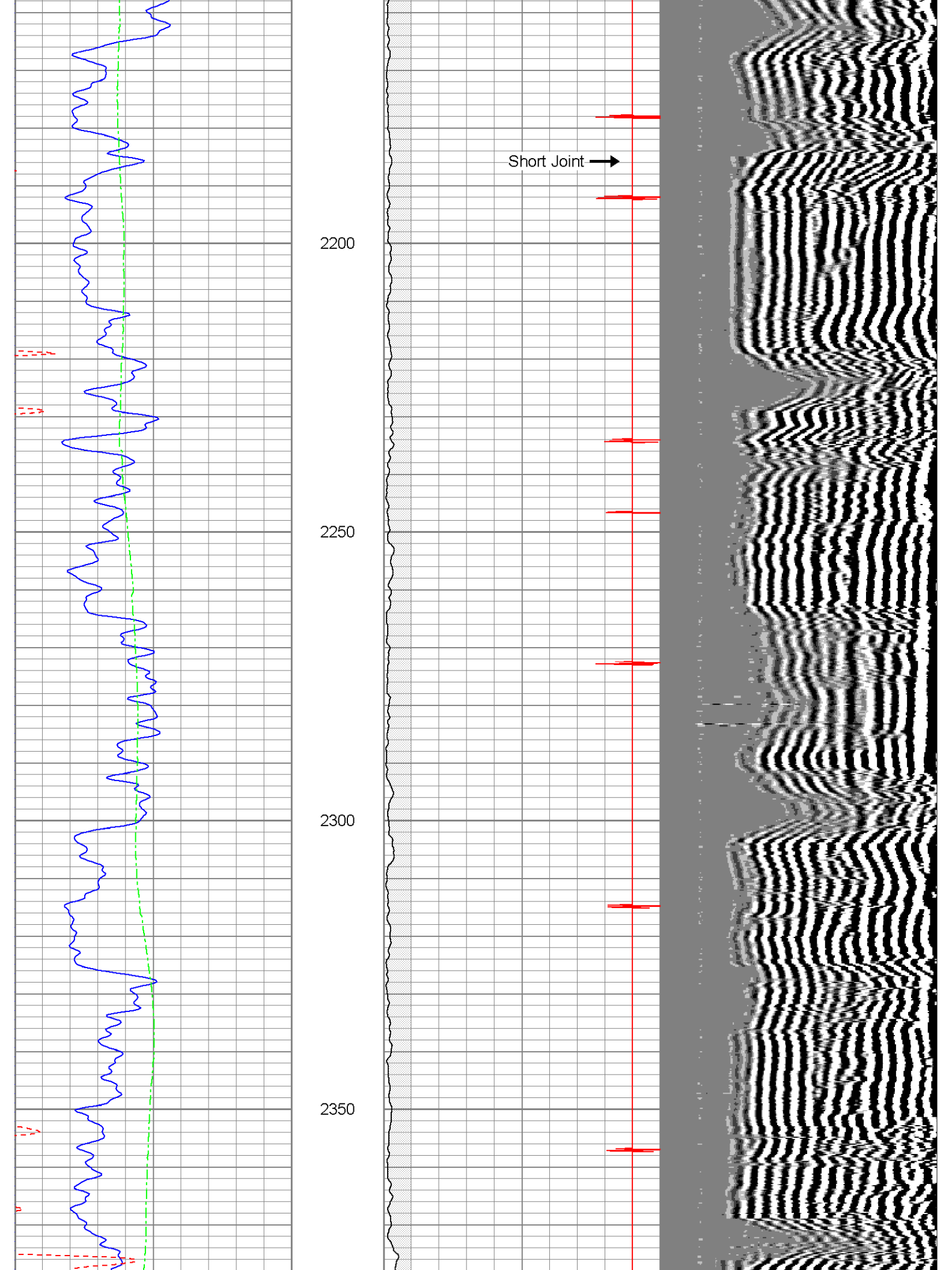




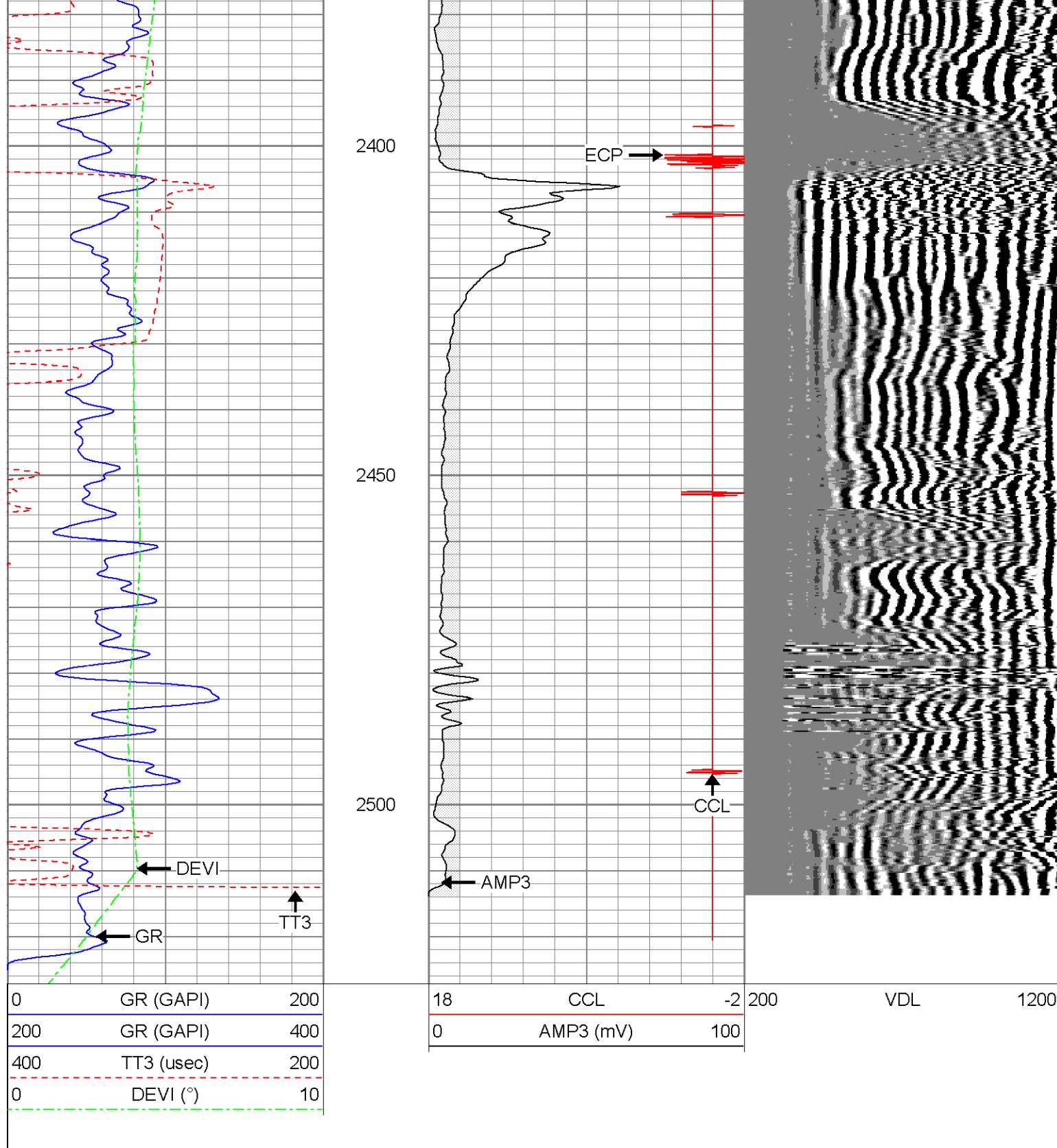










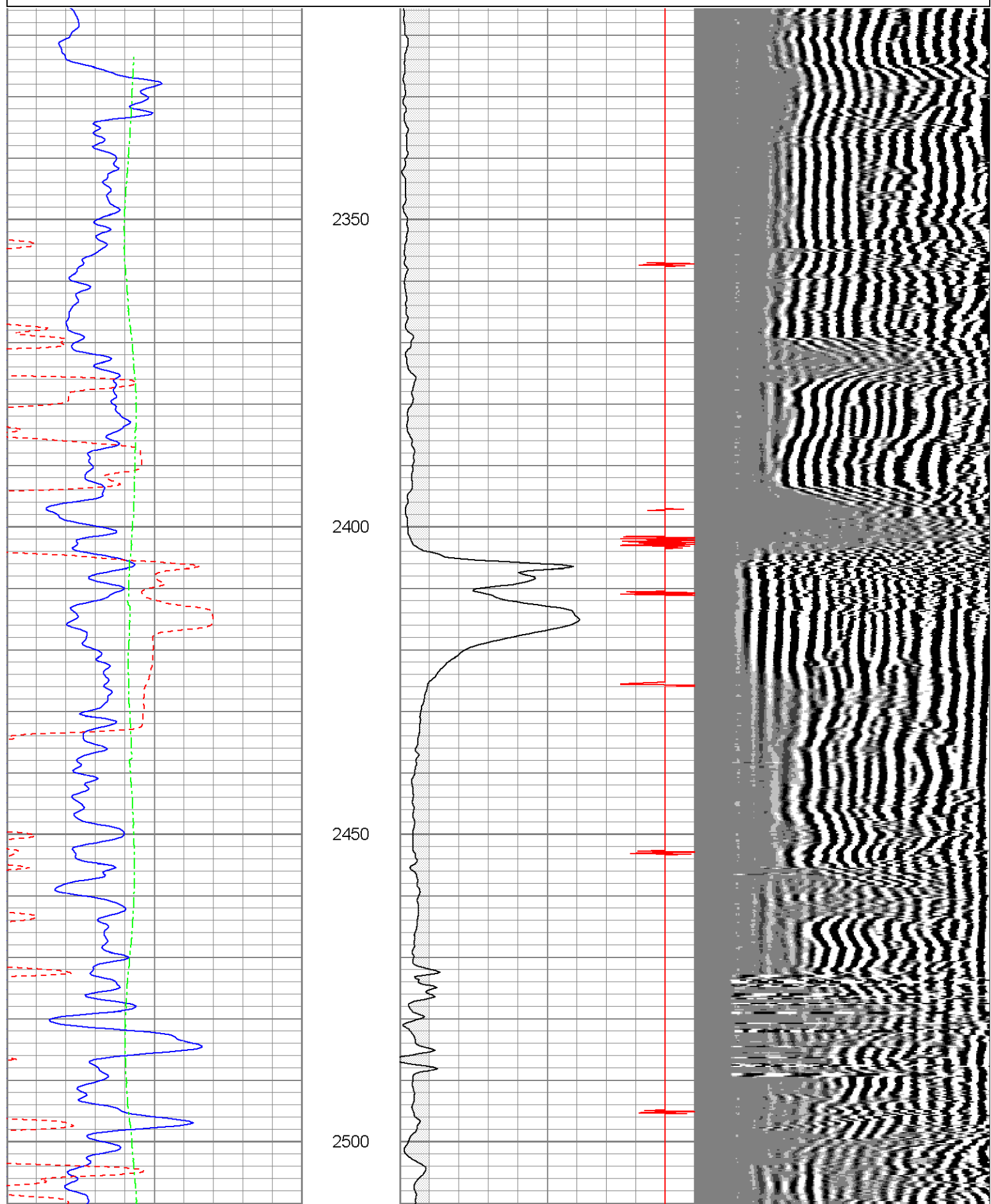


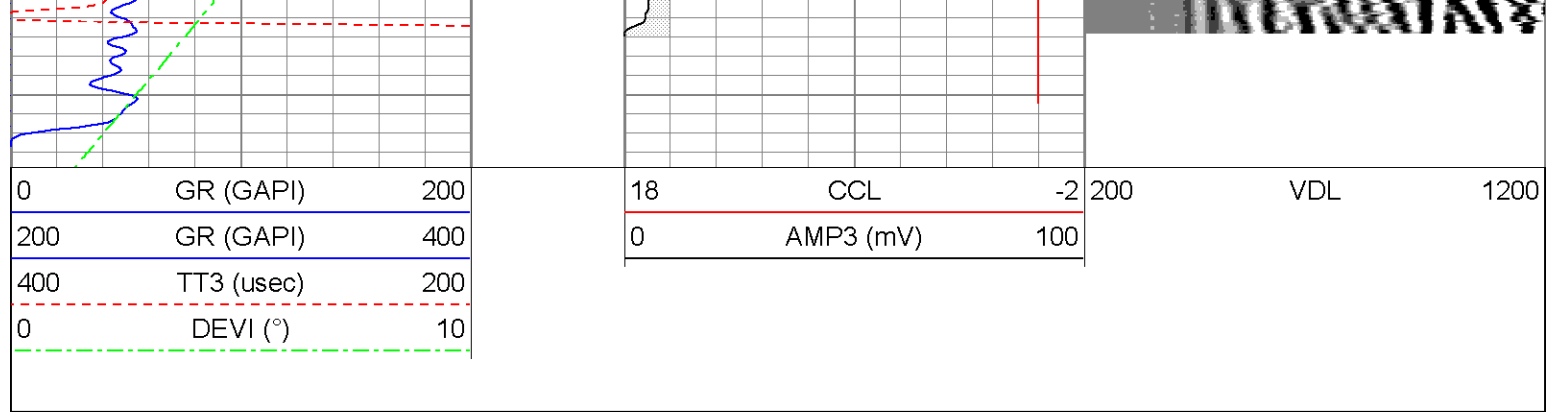


0	GR (GAPI)	200
200	GR (GAPI)	400
400	TT3 (usec)	200
0	DEVI (°)	10

18	CCL	-2
0	AMP3 (mV)	100

200 VDL 1200





Calibration Report					
Database File:	larissa112311b.db				
Dataset Pathname:	pass1				
Dataset Creation:	Wed Nov 23 11:49:43 2011 by Log Open-Cased 071220				
Gamma Ray Calibration Report					
Serial Number:	080616				
Tool Model:	275D_INC				
Performed:	Tue Nov 15 14:55:34 2011				
Calibrator Value:	1.0	GAPI			
Background Reading:	0.0	cps			
Calibrator Reading:	1.0	cps			
Sensitivity:	1.0000	GAPI/cps			
Inclinometer Calibration Report					
Performed:	Tue Nov 15 14:55:36 2011				
	Low Read.	High Read.	Low Ref.	High Ref.	
X Accelerometer	-3583.40	3594.20	-1.00	1.00	gee
Y Accelerometer	-3588.80	3532.80	-1.00	1.00	gee
Z Accelerometer					
Cement Bond Log Calibration Report					
Serial Number:	080201				
Tool Model:	PROBEDIGITALCBL				
Performed:	Wed Nov 23 11:39:25 2011				
Depth:	777.107	ft			
Casing Diameter:	5.5	in			
	3' Spacing		5' Spacing		
Signal Zero:	1	1		mV	
Calibrated Amplitude:	85	85		mV	
Reading at Signal Zero:	0.00725098	0.00693359		V	
Reading in Free Pipe:	0.62	0.59		V	
Gain:	137.087	144.066			
Offset:	0.00598402	0.00110596			

Sensor	Offset (ft)	Schematic	Description	Len (ft)	OD (in)	Wt (lb)
--------	-------------	-----------	-------------	----------	---------	---------

Tool Joint	Length (ft)	Weight (lb)	OD (in)	ID (in)	WT (lb)
WVF3	14.75				
WVF5	13.75				
CCL	6.50				
ACCX	4.83				
ACCY	4.83				
ACCZ	4.83				
GR	3.83				
<p>Dataset: larissa112311b.db: field/well/run1/pass1</p> <p>Total Length: 20.00 ft</p> <p>Total Weight: 211.50 lb</p> <p>O.D. 2.75 in</p>					