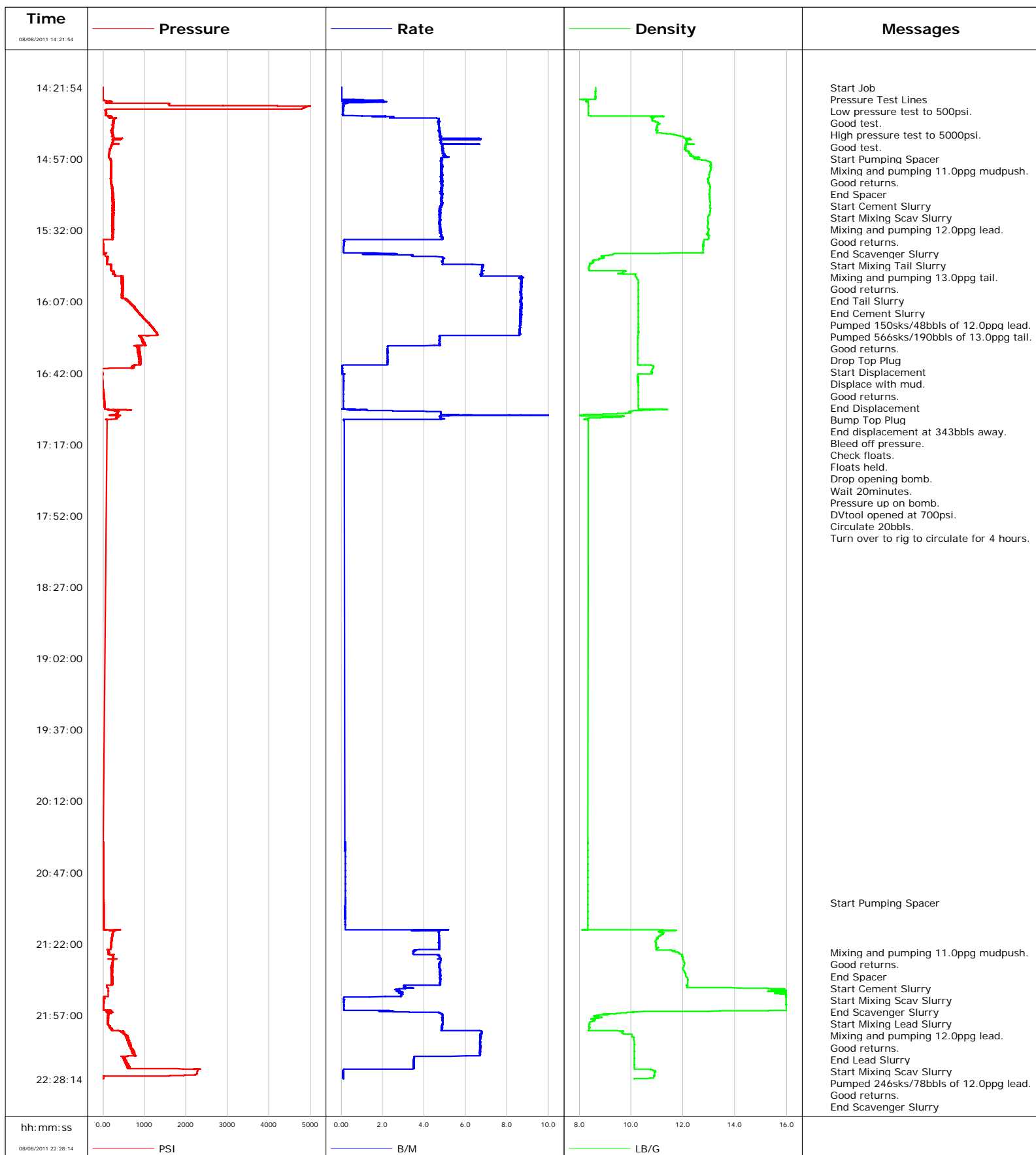


Well FEDERAL 36-1H
Field ORCHARD
Engineer JEFF PATTERSON
Country United States

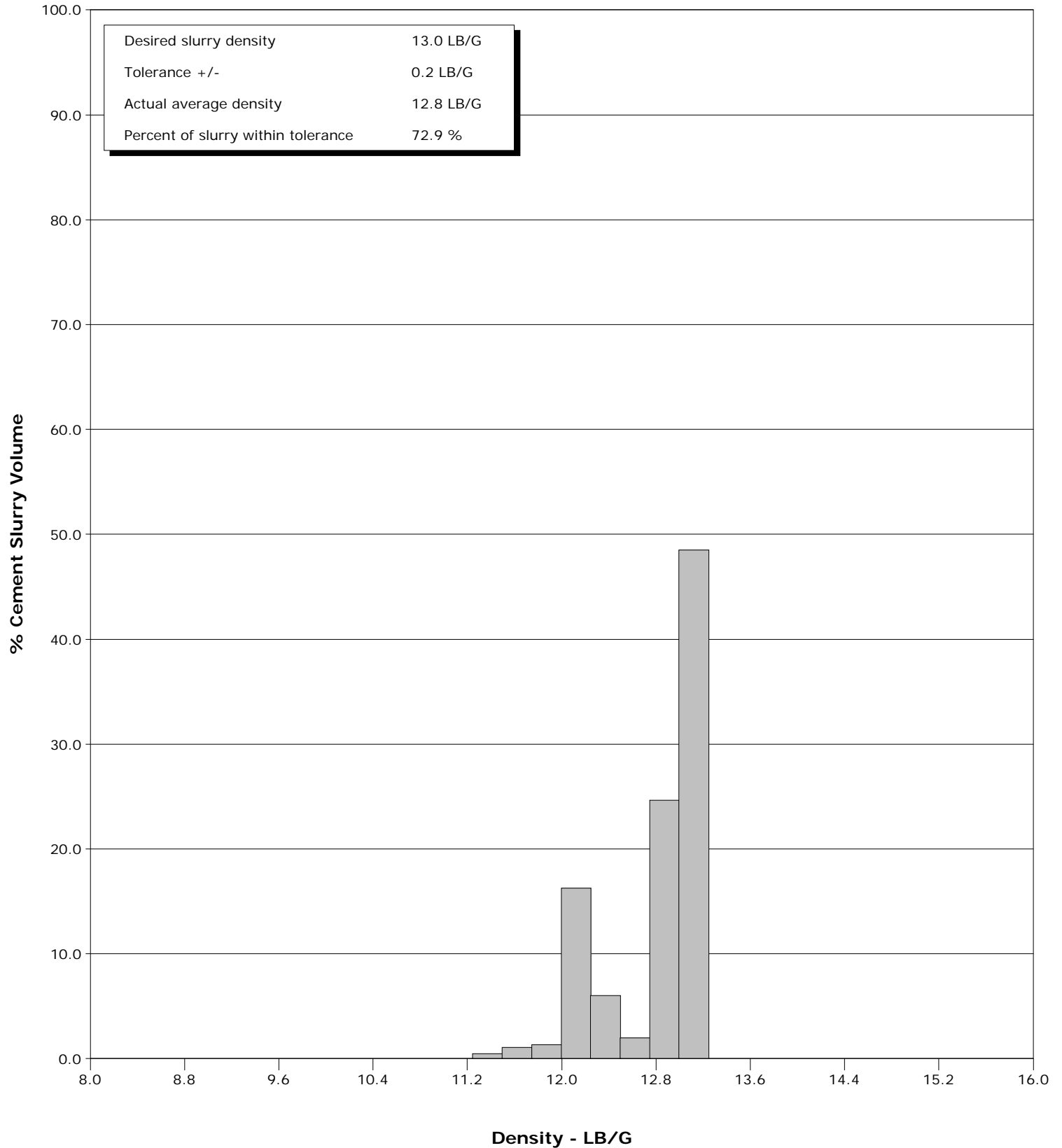
Client ENCAN
SIR No. BUNM-00013
Job Type 7 5/8" INTERMEDIATE
Job Date 08-08-2011



Well FEDERAL 36-1H
Field ORCHARD
Engineer JEFF PATTERSON
Country United States

Client ENCANA
SIR No. BUNM-00013
Job Type 7 5/8" INTERMEDIATE
Job Date 08-08-2011

Cement Slurry - 08/08/2011 14:44:40 to 08/08/2011 15:33:33





Cementing Service Report

				Customer ENCANA		Job Number BUNM-00013	
Well FEDERAL 36-1H FEDERAL 36-1H			Location (legal) ON1		Schlumberger Location GRAND JUNCTION,COLORADO		Job Start Aug/08/2011
Field ORCHARD		Formation Name/Type SHALE		Deviation 0 deg	Bit Size 9.9 in	Well MD 7319.0 ft	Well TVD 7319.0 ft
County GARFIELD		State/Province Colorado		BHP	BHST 200 degF	BHCT 135 degF	Pore Press. Gradient
Well Master 0631298165		API/UWI					
Rig Name NABORS M-13		Drilled For Gas	Service Via Land	Casing/Liner			
				Depth, ft	Size, in	Weight, lb/ft	Grade
							Thread
Offshore Zone		Well Class New	Well Type Development	1500.0	9.630	36.0	J55
				7319.0	7.630	26.4	P110
Drilling Fluid Type		Max. Density	Plastic Viscosity	Tubing/Drill Pipe			
				Depth,	Size,	Weight,	Grade
							Thread
Service Line Cementing		Job Type 7 5/8" INTERMEDIATE					
Max. Allowed Tub. Press 5000 psi		Max. Allowed Ann. Press	WH Connection 7 5/8" CEMENT HEAD	Perforations/Open Hole			
				Top,	Bottom,	No. of Shots	Total Interval
							Diameter
				Treat Down Casing	Displacement 344.0 bbl	Packer Type	Packer Depth
				Tubing Vol.	Casing Vol. 346.0 bbl	Annular Vol. 367.0 bbl	Openhole Vol. 755.0 bbl
Casing/Tubing Secured <input checked="" type="checkbox"/>		1 Hole Vol. Circulated prior to Cement <input checked="" type="checkbox"/>		Casing Tools		Squeeze Job	
Lift Pressure 4231 psi				Shoe Type Guide		Squeeze Type	
Pipe Rotated <input type="checkbox"/>		Pipe Reciprocated <input type="checkbox"/>		Shoe Depth 7319.0 ft		Tool Type	
No. Centralizers		Top Plugs 1	Bottom Plugs	Stage Tool Type DV		Tool Depth	
Cement Head Type Single				Stage Tool Depth 3011.0 ft		Tail Pipe Size	
Job Scheduled For Aug/08/2011		Arrived on Location Aug/08/2011	Leave Location Aug/08/2011	Collar Type Float		Tail Pipe Depth	
				Collar Depth 7277.0 ft		Sqz. Total Vol.	
Date	Time 24-hr clock	Treating Pressure PSI	Flow Rate B/M	Density LB/G	Volume BBL	Message	
08/08/2011	13:39:24					Started Acquisition	
08/08/2011	14:21:54	-4	0.0	8.63	0.0		
08/08/2011	14:21:57					Start Job	
08/08/2011	14:21:57	-4	0.0	8.63	0.0		
08/08/2011	14:21:59					Pressure Test Lines	
08/08/2011	14:21:59	-5	0.0	8.63	0.0		
08/08/2011	14:22:00					Low pressure test to 500psi.	
08/08/2011	14:22:00					Good test.	
08/08/2011	14:22:00	-5	0.0	8.63	0.0		
08/08/2011	14:22:01					High pressure test to 5000psi.	
08/08/2011	14:22:01					Good test.	
08/08/2011	14:22:01	-4	0.0	8.63	0.0		
08/08/2011	14:22:03					Start Pumping Spacer	
08/08/2011	14:22:03	-4	0.0	8.63	0.0		
08/08/2011	14:22:04					Mixing and pumping 11.0ppg mudpush.	
08/08/2011	14:22:04					Good returns.	
08/08/2011	14:22:04	-4	0.0	8.64	0.0		
08/08/2011	14:22:44	-4	0.0	8.64	0.0		
08/08/2011	14:24:24	-4	0.0	8.63	0.0		
08/08/2011	14:26:04	-5	0.0	8.63	0.0		
08/08/2011	14:27:44	-6	0.0	8.63	0.0		

Well FEDERAL 36-1H FEDERAL 36-1H			Field ORCHARD		Job Start Aug/08/2011	Customer ENCANA	Job Number BUNM-00013
Date	Time 24-hr clock	Treating Pressure PSI	Flow Rate B/M	Density LB/G	Volume BBL	Message	
08/08/2011	14:31:04	2890	0.1	8.35	2.2		
08/08/2011	14:32:44	79	0.1	8.35	2.4		
08/08/2011	14:34:24	72	0.1	8.35	2.5		
08/08/2011	14:36:04	192	2.1	10.87	2.8		
08/08/2011	14:37:44	260	4.7	10.80	8.2		
08/08/2011	14:39:24	247	4.7	11.04	16.0		
08/08/2011	14:41:04	246	4.7	11.00	23.9		
08/08/2011	14:42:44	222	4.7	10.95	31.7		
08/08/2011	14:44:24	212	4.8	11.14	39.6		
08/08/2011	14:44:39					End Spacer	
08/08/2011	14:44:39	231	4.8	11.35	40.8		
08/08/2011	14:44:40					Start Cement Slurry	
08/08/2011	14:44:40	220	4.8	11.37	40.9		
08/08/2011	14:44:43					Start Mixing Scav Slurry	
08/08/2011	14:44:43	234	4.8	11.39	41.1		
08/08/2011	14:44:45					Mixing and pumping 12.0ppg lead.	
08/08/2011	14:44:45	228	4.8	11.40	41.3		
08/08/2011	14:44:46					Good returns.	
08/08/2011	14:44:46	219	4.8	11.40	41.4		
08/08/2011	14:46:04	248	4.8	12.01	47.6		
08/08/2011	14:47:44	246	4.8	12.10	56.6		
08/08/2011	14:49:24	230	4.8	12.12	64.6		
08/08/2011	14:51:04	200	4.9	12.09	72.9		
08/08/2011	14:52:44	168	4.9	12.11	81.0		
08/08/2011	14:54:24	156	4.9	12.24	89.2		
08/08/2011	14:56:04	134	5.0	12.38	97.5		
08/08/2011	14:57:44	191	4.8	12.86	105.6		
08/08/2011	14:58:26					End Scavenger Slurry	
08/08/2011	14:58:26	187	4.8	13.03	109.0		
08/08/2011	14:58:27					Start Mixing Tail Slurry	
08/08/2011	14:58:27	187	4.8	13.03	109.1		
08/08/2011	14:58:29					Mixing and pumping 13.0ppg tail.	
08/08/2011	14:58:29					Good returns.	
08/08/2011	14:58:29	195	4.8	13.04	109.2		
08/08/2011	14:59:24	198	4.8	13.06	113.7		
08/08/2011	15:01:04	189	4.8	13.06	121.7		
08/08/2011	15:02:44	196	4.9	13.07	129.8		
08/08/2011	15:04:24	198	4.8	13.02	137.9		
08/08/2011	15:06:04	196	4.8	13.01	145.9		
08/08/2011	15:07:44	188	4.9	12.96	154.0		
08/08/2011	15:09:24	207	4.9	13.00	162.1		
08/08/2011	15:11:04	227	4.8	13.05	170.2		
08/08/2011	15:12:44	234	4.9	13.03	178.3		
08/08/2011	15:14:24	238	4.8	13.01	186.3		
08/08/2011	15:16:04	235	4.8	13.03	194.4		
08/08/2011	15:17:44	242	4.8	13.03	202.5		
08/08/2011	15:19:24	241	4.8	13.05	210.6		
08/08/2011	15:21:04	237	4.8	13.04	218.6		
08/08/2011	15:22:44	239	4.8	13.05	226.5		
08/08/2011	15:24:24	225	4.8	13.02	234.5		
08/08/2011	15:26:04	238	4.8	12.96	242.4		
08/08/2011	15:27:44	231	4.8	12.96	250.4		
08/08/2011	15:29:24	218	4.8	12.96	258.3		
08/08/2011	15:31:04	236	4.8	12.96	266.3		

Well FEDERAL 36-1H FEDERAL 36-1H			Field ORCHARD		Job Start Aug/08/2011		Customer ENCANA		Job Number BUNM-00013	
Date	Time 24-hr clock	Treating Pressure PSI	Flow Rate B/M	Density LB/G	Volume BBL	Message				
08/08/2011	15:33:32					End Tail Slurry				
08/08/2011	15:33:32	230	4.8	12.97	278.1					
08/08/2011	15:33:33					End Cement Slurry				
08/08/2011	15:33:33	242	4.8	12.97	278.1					
08/08/2011	15:33:34					Pumped 150sks/48bbls of 12.0ppg lead.				
08/08/2011	15:33:34					Pumped 566sks/190bbls of 13.0ppg tail.				
08/08/2011	15:33:34	231	4.8	12.97	278.2					
08/08/2011	15:33:35					Good returns.				
08/08/2011	15:33:35	231	4.8	12.97	278.3					
08/08/2011	15:33:37					Drop Top Plug				
08/08/2011	15:33:37	241	4.8	12.97	278.5					
08/08/2011	15:33:38					Start Displacement				
08/08/2011	15:33:38	237	4.8	12.97	278.5					
08/08/2011	15:33:39					Displace with mud.				
08/08/2011	15:33:39					Good returns.				
08/08/2011	15:33:39	238	4.8	12.97	278.6					
08/08/2011	15:34:24	220	4.9	12.95	282.2					
08/08/2011	15:36:04	224	4.8	13.00	290.3					
08/08/2011	15:37:44	-7	0.2	12.79	293.3					
08/08/2011	15:39:24	7	0.1	12.78	293.5					
08/08/2011	15:41:04	5	0.1	12.78	293.7					
08/08/2011	15:42:44	7	0.1	12.78	293.9					
08/08/2011	15:44:24	55	3.4	9.08	296.9					
08/08/2011	15:46:04	108	4.9	8.79	304.2					
08/08/2011	15:47:44	94	4.9	8.52	312.4					
08/08/2011	15:49:24	194	6.8	8.40	321.6					
08/08/2011	15:51:04	187	6.8	8.36	332.9					
08/08/2011	15:52:44	272	6.8	9.70	344.2					
08/08/2011	15:54:24	290	6.7	10.16	355.5					
08/08/2011	15:56:04	449	8.7	10.23	369.6					
08/08/2011	15:57:44	453	8.7	10.27	384.1					
08/08/2011	15:59:24	457	8.7	10.27	398.5					
08/08/2011	16:01:04	477	8.7	10.28	413.0					
08/08/2011	16:02:44	457	8.7	10.28	427.4					
08/08/2011	16:04:24	457	8.7	10.28	441.9					
08/08/2011	16:06:04	564	8.7	10.27	456.4					
08/08/2011	16:07:44	657	8.7	10.28	470.8					
08/08/2011	16:09:24	729	8.7	10.28	485.3					
08/08/2011	16:11:04	786	8.7	10.28	499.7					
08/08/2011	16:12:44	864	8.7	10.28	514.2					
08/08/2011	16:14:24	968	8.6	10.28	528.6					
08/08/2011	16:16:04	1033	8.6	10.28	543.0					
08/08/2011	16:17:44	1116	8.6	10.28	557.4					
08/08/2011	16:19:24	1184	8.6	10.28	571.8					
08/08/2011	16:21:04	1252	8.6	10.28	586.1					
08/08/2011	16:22:44	1313	8.6	10.28	600.5					
08/08/2011	16:24:24	930	4.8	10.26	612.1					
08/08/2011	16:26:04	943	4.8	10.26	620.0					
08/08/2011	16:27:44	971	4.8	10.26	627.9					
08/08/2011	16:29:24	858	2.2	10.26	634.0					
08/08/2011	16:31:04	867	2.2	10.26	637.7					
08/08/2011	16:32:44	896	2.2	10.26	641.4					
08/08/2011	16:34:24	903	2.2	10.26	645.2					
08/08/2011	16:36:04	912	2.2	10.26	648.9					

Well FEDERAL 36-1H FEDERAL 36-1H			Field ORCHARD		Job Start Aug/08/2011	Customer ENCANA	Job Number BUNM-00013
Date	Time 24-hr clock	Treating Pressure PSI	Flow Rate B/M	Density LB/G	Volume BBL	Message	
08/08/2011	16:39:17					End Displacement	
08/08/2011	16:39:17	702	0.0	10.86	653.7		
08/08/2011	16:39:19					Bump Top Plug	
08/08/2011	16:39:19	714	0.0	10.85	653.7		
08/08/2011	16:39:24	687	0.0	10.86	653.7		
08/08/2011	16:39:41					End displacement at 343bbls away.	
08/08/2011	16:39:41					Bleed off pressure.	
08/08/2011	16:39:41					Check floats.	
08/08/2011	16:39:41	699	0.0	10.85	653.7		
08/08/2011	16:39:42					Floats held.	
08/08/2011	16:39:42					Drop opening bomb.	
08/08/2011	16:39:42					Wait 20minutes.	
08/08/2011	16:39:42	308	0.0	10.85	653.7		
08/08/2011	16:39:43					Pressure up on bomb.	
08/08/2011	16:39:43					DVtool opened at 700psi.	
08/08/2011	16:39:43	255	0.0	10.85	653.7		
08/08/2011	16:39:45					Circulate 20bbls.	
08/08/2011	16:39:45	250	0.1	10.85	653.7		
08/08/2011	16:41:04	-21	0.0	10.80	653.8		
08/08/2011	16:42:44	-11	0.1	10.26	653.8		
08/08/2011	16:44:24	-13	0.1	10.27	654.0		
08/08/2011	16:46:04	-11	0.1	10.27	654.2		
08/08/2011	16:47:44	-8	0.1	10.27	654.4		
08/08/2011	16:49:24	-3	0.1	10.28	654.6		
08/08/2011	16:51:04	11	0.1	10.28	654.8		
08/08/2011	16:52:44	17	0.1	10.28	655.0		
08/08/2011	16:54:24	24	0.1	10.28	655.2		
08/08/2011	16:56:04	29	0.1	10.28	655.4		
08/08/2011	16:57:44	34	0.1	10.27	655.5		
08/08/2011	16:59:24	39	0.1	10.27	655.7		
08/08/2011	17:01:04	355	4.8	9.93	658.5		
08/08/2011	17:01:48					Turn over to rig to circulate for 4 hours.	
08/08/2011	17:01:48	358	4.8	9.82	662.1		
08/08/2011	17:02:44	212	8.6	7.42	667.0		
08/08/2011	17:04:24	325	4.8	8.29	676.2		
08/08/2011	20:32:44	4	0.2	8.34	678.4		
08/08/2011	20:34:24	4	0.2	8.34	678.7		
08/08/2011	20:36:04	4	0.2	8.34	679.0		
08/08/2011	20:37:44	3	0.2	8.34	679.3		
08/08/2011	20:39:24	3	0.2	8.34	679.7		
08/08/2011	20:41:04	2	0.2	8.34	680.0		
08/08/2011	20:42:44	1	0.2	8.34	680.3		
08/08/2011	20:44:24	0	0.2	8.34	680.7		
08/08/2011	20:46:04	1	0.2	8.34	681.0		
08/08/2011	20:47:44	1	0.2	8.34	681.4		
08/08/2011	20:49:24	1	0.2	8.34	681.7		
08/08/2011	20:51:04	2	0.2	8.34	682.0		
08/08/2011	20:52:44	1	0.2	8.34	682.4		
08/08/2011	20:54:24	1	0.2	8.34	682.7		
08/08/2011	20:56:04	1	0.2	8.33	683.0		
08/08/2011	20:57:44	0	0.2	8.34	683.4		
08/08/2011	20:59:24	1	0.2	8.33	683.7		
08/08/2011	21:01:04	11	0.2	8.33	684.0		
08/08/2011	21:01:46					Start Pumping Spacer	

Well FEDERAL 36-1H FEDERAL 36-1H			Field ORCHARD		Job Start Aug/08/2011	Customer ENCANA	Job Number BUNM-00013
Date	Time 24-hr clock	Treating Pressure PSI	Flow Rate B/M	Density LB/G	Volume BBL	Message	
08/08/2011	21:02:44	16	0.2	8.33	684.4		
08/08/2011	21:04:24	14	0.2	8.33	684.7		
08/08/2011	21:06:04	14	0.2	8.33	685.0		
08/08/2011	21:07:44	13	0.2	8.33	685.4		
08/08/2011	21:09:24	13	0.2	8.33	685.7		
08/08/2011	21:11:04	13	0.2	8.33	686.0		
08/08/2011	21:12:44	13	0.2	8.33	686.3		
08/08/2011	21:14:24	13	0.2	8.33	686.7		
08/08/2011	21:16:04	249	4.7	11.06	690.7		
08/08/2011	21:17:44	233	4.7	11.14	698.6		
08/08/2011	21:19:24	211	4.7	11.00	706.4		
08/08/2011	21:21:04	210	4.7	10.95	714.3		
08/08/2011	21:22:44	206	4.7	10.95	722.2		
08/08/2011	21:24:24	187	4.7	10.99	730.1		
08/08/2011	21:26:04	136	3.5	11.75	736.6		
08/08/2011	21:26:20					Mixing and pumping 11.0ppg mudpush.	
08/08/2011	21:26:20					Good returns.	
08/08/2011	21:26:20	138	3.5	11.82	737.5		
08/08/2011	21:26:21					End Spacer	
08/08/2011	21:26:21	131	3.5	11.82	737.6		
08/08/2011	21:26:23					Start Cement Slurry	
08/08/2011	21:26:23	142	3.5	11.82	737.7		
08/08/2011	21:26:25					Start Mixing Scav Slurry	
08/08/2011	21:26:25	141	3.5	11.82	737.8		
08/08/2011	21:27:20					End Scavenger Slurry	
08/08/2011	21:27:20					Start Mixing Lead Slurry	
08/08/2011	21:27:20	257	4.7	11.96	741.1		
08/08/2011	21:27:44	199	4.7	11.97	743.0		
08/08/2011	21:29:00					Mixing and pumping 12.0ppg lead.	
08/08/2011	21:29:00	251	4.8	12.00	749.0		
08/08/2011	21:29:01					Good returns.	
08/08/2011	21:29:01	248	4.8	12.00	749.1		
08/08/2011	21:29:24	344	4.8	11.99	750.9		
08/08/2011	21:31:04	243	4.8	12.05	758.9		
08/08/2011	21:32:44	204	4.7	12.03	766.8		
08/08/2011	21:34:24	205	4.8	11.99	774.7		
08/08/2011	21:36:04	201	4.8	12.07	782.7		
08/08/2011	21:37:44	222	4.8	12.11	790.6		
08/08/2011	21:39:24	207	4.8	12.18	798.6		
08/08/2011	21:41:04	233	4.8	12.18	806.6		
08/08/2011	21:42:44	96	3.1	12.17	813.7		
08/08/2011	21:43:33					End Lead Slurry	
08/08/2011	21:43:33	110	3.2	12.51	816.2		
08/08/2011	21:43:36					Start Mixing Scav Slurry	
08/08/2011	21:43:36	114	3.3	13.13	816.4		
08/08/2011	21:43:37					Pumped 246sks/78bbls of 12.0ppg lead.	
08/08/2011	21:43:37					Good returns.	
08/08/2011	21:43:37	114	3.4	13.47	816.5		
08/08/2011	21:44:24	124	2.6	15.57	818.8		
08/08/2011	21:46:04	124	2.8	15.68	823.4		
08/08/2011	21:46:39					End Scavenger Slurry	
08/08/2011	21:46:39	126	3.0	15.90	825.1		
08/08/2011	21:46:41					Pumping 15.8ppg tail.	
08/08/2011	21:46:41					Good returns.	

Well FEDERAL 36-1H FEDERAL 36-1H			Field ORCHARD		Job Start Aug/08/2011	Customer ENCANA	Job Number BUNM-00013
Date	Time 24-hr clock	Treating Pressure PSI	Flow Rate B/M	Density LB/G	Volume BBL	Message	
08/08/2011	21:46:43					End Cement Slurry	
08/08/2011	21:46:43	125	3.0	15.96	825.3		
08/08/2011	21:46:44					Pumped 50sk/10bbls of 15.8ppg tail.	
08/08/2011	21:46:44	125	3.0	15.97	825.4		
08/08/2011	21:46:45					Good returns.	
08/08/2011	21:46:45	125	3.0	15.99	825.4		
08/08/2011	21:46:46					Drop Top Plug	
08/08/2011	21:46:46	125	2.9	16.00	825.5		
08/08/2011	21:46:47					Start Displacement	
08/08/2011	21:46:47	126	2.9	16.01	825.5		
08/08/2011	21:46:48					Displace with mud.	
08/08/2011	21:46:48	126	2.9	16.01	825.6		
08/08/2011	21:46:49					Good returns.	
08/08/2011	21:46:49	126	2.9	16.02	825.6		
08/08/2011	21:47:44	123	2.9	15.98	828.3		
08/08/2011	21:49:24	5	0.1	15.97	829.3		
08/08/2011	21:51:04	14	0.1	15.97	829.5		
08/08/2011	21:52:44	11	0.1	15.99	829.7		
08/08/2011	21:54:24	11	0.1	16.01	829.9		
08/08/2011	21:56:04	133	4.8	9.57	834.5		
08/08/2011	21:57:44	118	4.9	8.60	842.6		
08/08/2011	21:59:24	121	4.9	8.61	850.8		
08/08/2011	22:01:04	129	4.9	8.40	858.9		
08/08/2011	22:02:44	157	4.9	8.38	867.0		
08/08/2011	22:04:24	228	4.8	8.36	875.1		
08/08/2011	22:06:04	521	6.8	9.68	885.9		
08/08/2011	22:07:44	579	6.7	10.04	897.1		
08/08/2011	22:09:24	605	6.7	10.12	908.3		
08/08/2011	22:11:04	667	6.7	10.13	919.4		
08/08/2011	22:12:44	681	6.7	10.13	930.6		
08/08/2011	22:14:24	740	6.7	10.13	941.8		
08/08/2011	22:16:04	744	6.7	10.13	953.0		
08/08/2011	22:17:44	483	3.5	10.12	962.2		
08/08/2011	22:19:24	524	3.5	10.12	968.1		
08/08/2011	22:21:04	568	3.5	10.12	973.9		
08/08/2011	22:22:44	606	3.5	10.12	979.8		
08/08/2011	22:24:24	2278	0.1	10.94	982.6		
08/08/2011	22:25:39					Bump Top Plug	
08/08/2011	22:25:39	2266	0.1	10.91	982.7		
08/08/2011	22:25:40					End Displacement	
08/08/2011	22:25:40	2266	0.1	10.90	982.7		
08/08/2011	22:25:41					Bumped plug to 2300psi.	
08/08/2011	22:25:41					Final displacement was 142bbls.	
08/08/2011	22:25:41					Bleed off pressure.	
08/08/2011	22:25:41	2261	0.1	10.90	982.7		
08/08/2011	22:25:42					Check that the DV tool closes.	
08/08/2011	22:25:42					DV tool closed.	
08/08/2011	22:25:42					Got 1bbl back.	
08/08/2011	22:25:42	2267	0.1	10.90	982.7		
08/08/2011	22:25:43					Got 4bbls of cement to surface.	
08/08/2011	22:25:43					Good returns for entire job.	
08/08/2011	22:25:43	2267	0.1	10.90	982.7		
08/08/2011	22:26:04	2257	0.1	10.90	982.7		
08/08/2011	22:27:44	6	0.1	10.87	982.9		

Well FEDERAL 36-1H FEDERAL 36-1H			Field ORCHARD		Job Start Aug/08/2011	Customer ENCANA		Job Number BUNM-00013	
Date	Time 24-hr clock	Treating Pressure PSI	Flow Rate B/M	Density LB/G	Volume BBL		Message		
08/08/2011	22:28:10	6	0.1	10.13	982.9				

Post Job Summary

Average Pump Rates, bbl/min					Volume of Fluid Injected, bbl				
Slurry 7.0	N2	Mud	Maximum Rate 8.0		Total Slurry 326.0	Mud	Spacer 80.0	N2	
Treating Pressure Summary, psi					Breakdown Fluid				
Maximum 5000	Final 2300	Average 300	Bump Plug to 2300	Breakdown	Type		Volume		Density
Avg. N2 Percent		Designed Slurry Volume 326.0 bbl		Displacement 344.0 bbl		Mix Water Temp 65 degF		Cement Circulated to Surface? <input checked="" type="checkbox"/>	
								Volume 5.0 bbl	
								To	
Customer or Authorized Representative				Schlumberger Supervisor				Circulation Lost <input type="checkbox"/>	
CHARLIE BROWN				JEFF PATTERSON				Job Completed <input checked="" type="checkbox"/>	
								-	
								-	