

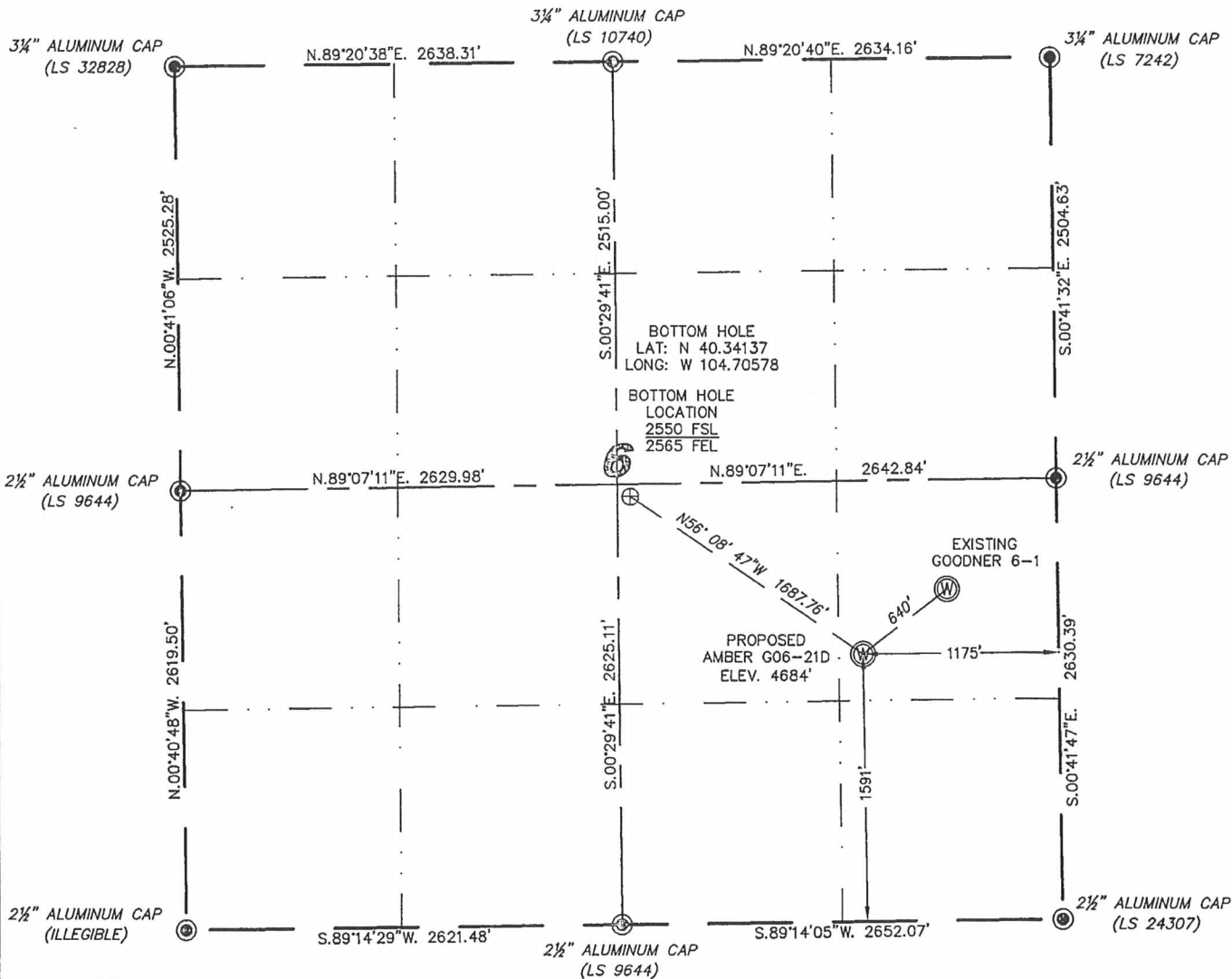
Steil Surveying Services, LLC

1102 West 19th Street P.O. BOX 2073

Cheyenne, Wyoming 82001

**WELL LOCATION CERTIFICATE**  
THIS MAP DOES NOT REPRESENT A BOUNDARY SURVEY

SECTION 6  
TOWNSHIP 4 NORTH  
RANGE 65 WEST



0 1000

Scale: 1" = 1000'

IN ACCORDANCE WITH A REQUEST FROM MIKE RODINE - NOBLE ENERGY INC., STEIL SURVEYING SERVICES, LLC HAS DETERMINED THE LOCATION OF THE AMBER G06-21D WELL TO BE 1591' FSL, 1175' FEL, AS MEASURED AT NINETY (90) DEGREES FROM THE SECTION LINES, SECTION 6, TOWNSHIP 4 NORTH, RANGE 65 WEST, 6TH PRINCIPLE MERIDIAN, WELD COUNTY, COLORADO.

I HEREBY CERTIFY THAT THIS WELL LOCATION CERTIFICATE WAS PREPARED BY ME, OR UNDER MY DIRECT SUPERVISION, THAT THE FIELD WORK WAS COMPLETED ON 08/17/2011, FOR AND ON BEHALF OF NOBLE ENERGY INC., THAT IT IS NOT A LAND SURVEY PLAT OR AN IMPROVEMENT SURVEY PLAT, AND THAT IT IS NOT TO BE RELIED UPON FOR ESTABLISHMENT OF FENCE, BUILDING, OR OTHER FUTURE IMPROVEMENT LINES.

**NOTES:**

- 1) BASIS OF BEARINGS FOR THIS MAP ARE BASED UPON GPS OBSERVATIONS MADE ON 02/23/2011 BETWEEN MONUMENTS LOCATED AT THE SOUTHEAST SECTION CORNER AND THE NORTHEAST SECTION CORNER OF SAID SECTION AND WITH ALL BEARINGS SHOWN HEREON RELATIVE THERETO.
- 2) COORDINATES SHOWN ARE COLORADO STATE PLANE (NORTH ZONE) NAD 83.
- 3) ELEVATIONS ARE BASED UPON NGS OPUS SOLUTION NAVD 88 DATUM.
- 4) THE NEAREST EXISTING WELL IS: GOODNER 6-1, 640' NORTHEAST.
- 5) SEE LOCATION DRAWING FOR ALL IMPROVEMENTS WITHIN VISIBLE IMPROVEMENTS LIMIT.
- 6) THE LOCATION FALLS IN CROP LAND.

LATITUDE & LONGITUDE (NAD 83 SURFACE HOLE):  
LATITUDE: N 40.33876°  
LONGITUDE: W 104.70079°  
PDOP: 2.5  
QUARTER-QUARTER: NE/4SE/4  
NEAREST PROPERTY LINE: 340'+/- NORTHEAST

**LEGEND**

⊙ FOUND SURVEY MONUMENT PER  
MONUMENT RECORD - EXCEPTIONS NOTED.

(C) CALCULATED DIMENSION



Completed 08/19/2011

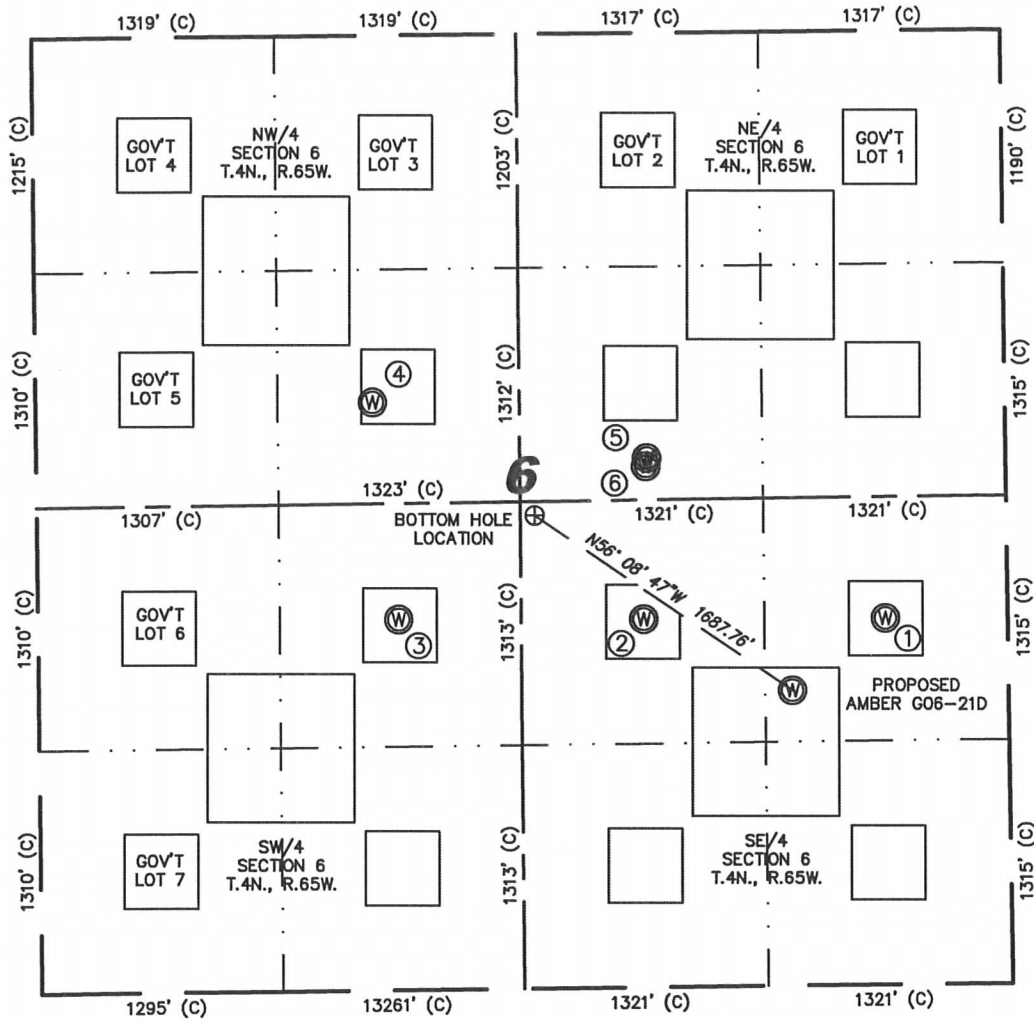
David C. Holmes  
Professional Land Surveyor Registration No. 32828  
State of Colorado

JOB #: 11086

NOTICE: According to Colorado law you MUST commence any legal action based upon any defect in this W.L.C. within three years after you first discover such defect. In no event may any action based upon any defect in this W.L.C. be commenced more than ten years from this said date of the certification shown hereon.

# SKETCH - AMBER G06-21D

SECTION 6  
TOWNSHIP 4 NORTH  
RANGE 65 WEST



①	②	③	④	⑤	⑥
GOODNER 6-1 NE/SE SEC. 6 1974' FSL 663' FEL EL 4686' N 40.33981 W 104.69895 PDOP 2.4	DEVOTIE 1-6 NW/SE SEC. 6 1985' FSL 1979' FEL EL 4687' N 40.33983 W 104.70368 PDOP 2.3	GOODNER G6-11 NE/SW SEC. 6 1998' FSL 1964' FWL EL 4689' N 40.33985 W 104.70845 PDOP 2.2	DABCO NO. 2 SE/NW SEC. 6 1973' FNL 1834' FWL EL 4686' N 40.34306 W 104.70893 PDOP 2.0	CURTIS G6-07 SW/NE SEC. 6 2287' FNL 1952' FEL EL 4685' N 40.34221 W 104.70359 PDOP 2.1	CURTIS G6-8 SW/NE SEC. 6 2331' FNL 1957' FEL EL 4686' N 40.34209 W 104.70361 PDOP 2.1

## NOTES:

- THIS SKETCH DOES NOT REPRESENT A BOUNDARY SURVEY.
- THE DATUM FOR THE LATITUDES AND LONGITUDES ON THIS SKETCH IS NAD83.

