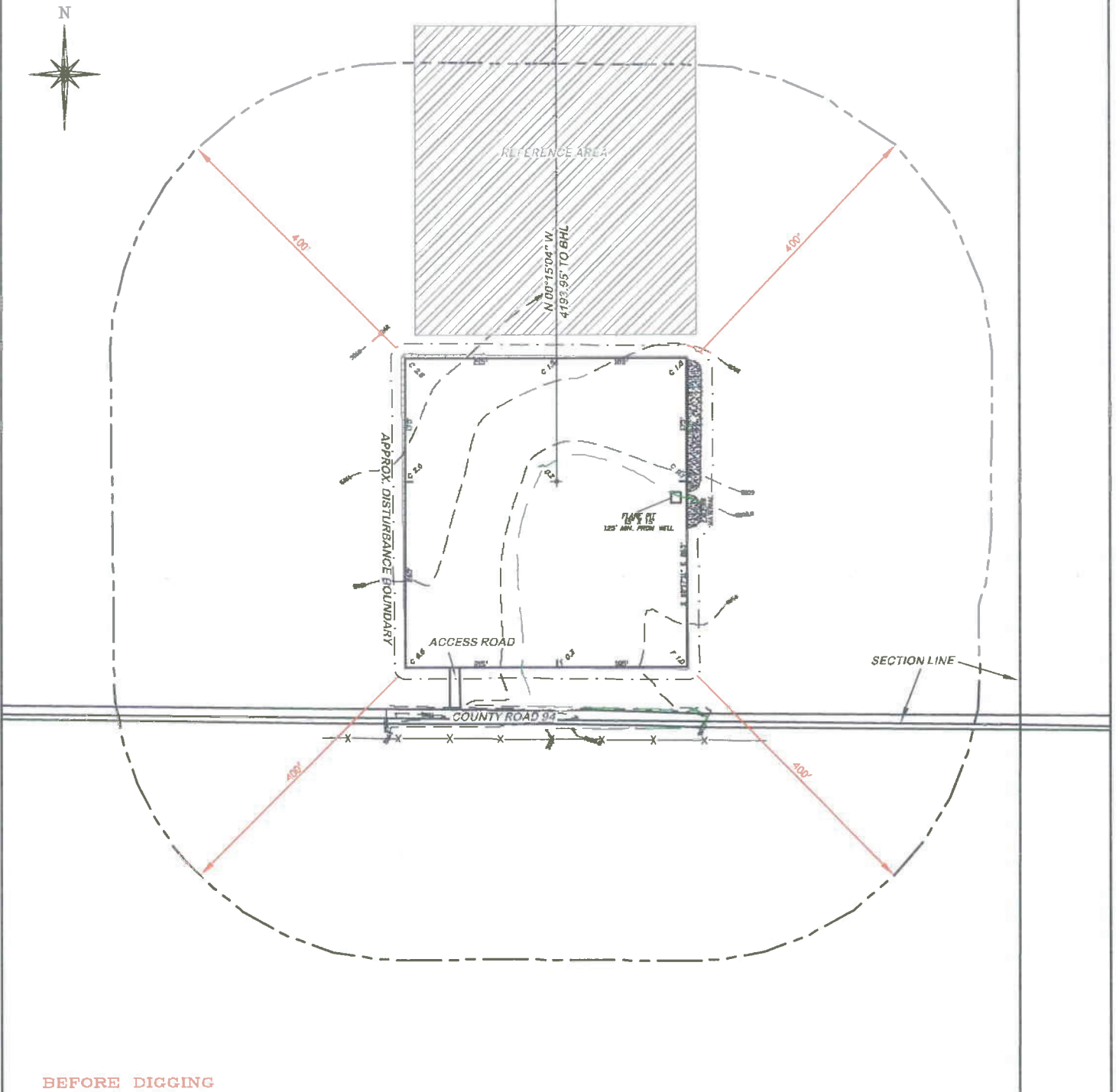


APPROXIMATE DISTURBANCE AREA: 4.8 ACRES±
 0.7% GRADE ON A SOUTHEASTERLY SLOPE
 UNGRADED ELEVATION: 5058.6'
 FINISHED ELEVATION: 5058.8'

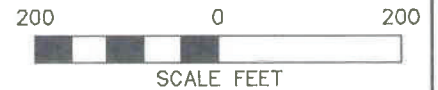
2A ATTACHMENT

2



**BEFORE DIGGING
 CALL FOR
 UTILITY LINE LOCATION**

NOTE: THE EARTH QUANTITIES ON
 THIS DRAWING ARE ESTIMATED
 AND THE USE OF IS AT THE
 RESPONSIBILITY OF THE USER.



RIFFIN & ASSOCIATES, INC.
 1414 ELK ST., ROCK SPRINGS, WY 82901

(307) 362-5028

DRAWN: 10/24/11 - JMB

SCALE: 1" = 200'

REVISED: NA

DRG JOB No. 18848

EXHIBIT 2C

LOCATION DRAWING

CHESAPEAKE ENERGY, LLC.
RC LAND INC 12-8-66 1H
SECTION 12, T8N, R66W

UNGRADED ELEVATION: 5058.6'
 FINISHED ELEVATION: 5058.8'