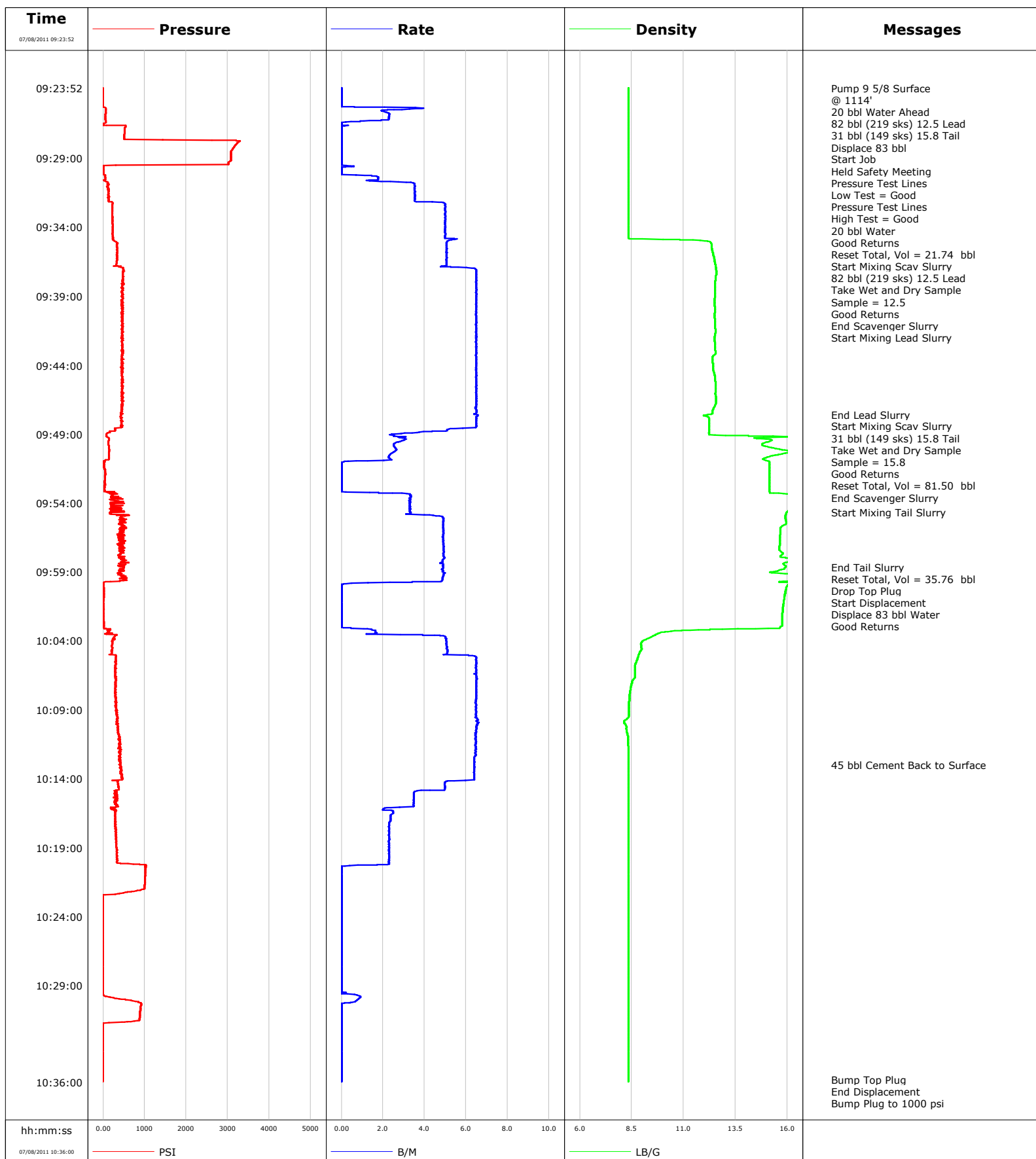


**Well** Daybreak Federal 19-6BB  
**Field** S Parachute  
**Engineer** Tom Leduc  
**Country** United States

**Client** Encana  
**SIR No.**  
**Job Type** 9 5/8 Surface @ 1114'  
**Job Date** 07-08-2011





Well			Field		Job Start		Customer		Job Number	
Daybreak Federal 19-6BB Daybreak Federal 19-6BB			S Parachute		Jul/08/2011		Encana		BRWT-00059	
Date	Time 24-hr clock	Treating Pressure PSI	Flow Rate B/M	Density LB/G	Volume BBL	Message				
07/08/2011	09:24:09	-4	0.0	8.34	0.0					
07/08/2011	09:25:32	61	1.9	8.34	0.8					
07/08/2011	09:27:12	513	0.0	8.34	2.5					
07/08/2011	09:28:52	3076	0.0	8.34	2.5					
07/08/2011	09:30:32	50	1.8	8.34	3.1					
07/08/2011	09:32:12	227	4.8	8.34	8.7					
07/08/2011	09:34:49					Reset Total, Vol = 21.74 bbl				
07/08/2011	09:34:49	233	5.4	8.40	21.7					
07/08/2011	09:34:52					Start Mixing Scav Slurry				
07/08/2011	09:34:52	243	5.4	10.01	22.0					
07/08/2011	09:34:53					82 bbl (219 sks) 12.5 Lead				
07/08/2011	09:34:53					Take Wet and Dry Sample				
07/08/2011	09:34:53	235	5.4	10.01	22.1					
07/08/2011	09:34:54					Sample = 12.5				
07/08/2011	09:34:54					Good Returns				
07/08/2011	09:34:54	235	5.3	10.81	22.2					
07/08/2011	09:35:32	336	5.1	12.36	25.4					
07/08/2011	09:35:49					End Scavenger Slurry				
07/08/2011	09:35:49	335	5.0	12.40	26.8					
07/08/2011	09:35:50					Start Mixing Lead Slurry				
07/08/2011	09:35:50	335	5.1	12.40	26.9					
07/08/2011	09:37:12	502	6.5	12.58	34.2					
07/08/2011	09:38:52	453	6.5	12.51	45.1					
07/08/2011	09:40:32	452	6.5	12.49	55.9					
07/08/2011	09:42:12	484	6.5	12.50	66.7					
07/08/2011	09:43:52	478	6.5	12.41	77.5					
07/08/2011	09:45:32	494	6.5	12.53	88.3					
07/08/2011	09:47:12	472	6.5	12.42	99.1					
07/08/2011	09:47:35					End Lead Slurry				
07/08/2011	09:47:35	441	6.5	12.20	101.6					
07/08/2011	09:47:40					Start Mixing Scav Slurry				
07/08/2011	09:47:40	432	6.6	11.97	102.2					
07/08/2011	09:47:48					31 bbl (149 sks) 15.8 Tail				
07/08/2011	09:47:48					Take Wet and Dry Sample				
07/08/2011	09:47:48					Sample = 15.8				
07/08/2011	09:47:48	419	6.5	12.20	103.0					
07/08/2011	09:47:49					Good Returns				
07/08/2011	09:47:49	458	6.5	12.20	103.1					
07/08/2011	09:47:50					Reset Total, Vol = 81.50 bbl				
07/08/2011	09:47:50	458	6.5	12.21	103.2					
07/08/2011	09:48:52	161	3.8	12.23	109.5					
07/08/2011	09:50:30					End Scavenger Slurry				
07/08/2011	09:50:30	140	2.3	15.57	113.9					
07/08/2011	09:50:32	139	2.3	15.41	114.0					
07/08/2011	09:52:12	39	0.0	15.13	114.9					
07/08/2011	09:53:52	312	3.3	16.47	116.9					
07/08/2011	09:54:39					Start Mixing Tail Slurry				
07/08/2011	09:54:39	506	3.3	15.99	119.5					
07/08/2011	09:55:32	381	4.9	15.94	123.5					
07/08/2011	09:57:12	498	4.9	15.61	131.6					
07/08/2011	09:58:39					End Tail Slurry				
07/08/2011	09:58:39	421	4.9	15.91	138.8					
07/08/2011	09:58:42					Reset Total, Vol = 35.76 bbl				
07/08/2011	09:58:42	492	4.9	15.88	139.0					

Well			Field	Job Start	Customer	Job Number
Daybreak Federal 19-6BB Daybreak Federal 19-6BB			S Parachute	Jul/08/2011	Encana	BRWT-00059
Date	Time 24-hr clock	Treating Pressure PSI	Flow Rate B/M	Density LB/G	Volume BBL	Message
07/08/2011	09:58:43	503	4.9	15.86	139.1	
07/08/2011	09:58:44					Start Displacement
07/08/2011	09:58:44	496	4.9	15.86	139.2	
07/08/2011	09:58:45					Displace 83 bbl Water
07/08/2011	09:58:45					Good Returns
07/08/2011	09:58:45	496	4.9	15.85	139.2	
07/08/2011	09:58:52	455	4.9	15.65	139.8	
07/08/2011	10:00:32	17	0.0	15.89	144.2	
07/08/2011	10:02:12	3	0.0	15.76	144.2	
07/08/2011	10:03:52	288	5.0	9.24	146.4	
07/08/2011	10:05:32	322	6.5	8.72	155.6	
07/08/2011	10:07:12	315	6.5	8.49	166.4	
07/08/2011	10:08:52	311	6.5	8.36	177.2	
07/08/2011	10:10:32	354	6.5	8.25	188.0	
07/08/2011	10:12:12	411	6.5	8.34	198.8	
07/08/2011	10:12:58					45 bbl Cement Back to Surface
07/08/2011	10:12:58	391	6.4	8.35	203.7	
07/08/2011	10:13:52	430	6.4	8.34	209.5	
07/08/2011	10:15:32	350	3.5	8.34	217.2	
07/08/2011	10:17:12	290	2.3	8.35	221.7	
07/08/2011	10:18:52	326	2.3	8.35	225.5	
07/08/2011	10:20:32	1024	0.0	8.35	228.7	
07/08/2011	10:22:12	688	0.0	8.35	228.7	
07/08/2011	10:23:52	-7	0.0	8.35	228.7	
07/08/2011	10:25:32	-6	0.0	8.35	228.7	
07/08/2011	10:27:12	-5	0.0	8.35	228.7	
07/08/2011	10:28:52	-7	0.0	8.35	228.7	
07/08/2011	10:30:32	904	0.0	8.35	229.3	
07/08/2011	10:32:12	-7	0.0	8.35	229.3	
07/08/2011	10:33:52	-7	0.0	8.35	229.3	
07/08/2011	10:35:32	-7	0.0	8.35	229.3	
07/08/2011	10:35:51					Bump Top Plug
07/08/2011	10:35:51	-7	0.0	8.35	229.3	
07/08/2011	10:35:52					End Displacement
07/08/2011	10:35:52	-7	0.0	8.35	229.3	
07/08/2011	10:35:55					Bump Plug to 1000 psi
07/08/2011	10:35:55	-7	0.0	8.35	229.3	
07/08/2011	10:35:56					Floats Did not Hold
07/08/2011	10:35:56					Bump Plug Again to 1000 psi
07/08/2011	10:35:56	-7	0.0	8.35	229.3	
07/08/2011	10:35:57					Floats Held
07/08/2011	10:35:57					Rig Down
07/08/2011	10:35:57	-7	0.0	8.35	229.3	

Well Daybreak Federal 19-6BB Daybreak Federal 19-6BB	Field S Parachute	Job Start Jul/08/2011	Customer Encana	Job Number BRWT-00059
---	----------------------	--------------------------	--------------------	--------------------------

Post Job Summary

Average Pump Rates, bbl/min					Volume of Fluid Injected, bbl			
Slurry 4.9	N2	Mud 0.0	Maximum Rate 6.6	Total Slurry 229.3	Mud 0.0	Spacer 26.9	N2	
Treating Pressure Summary, psi					Breakdown Fluid			
Maximum 3303	Final 1000	Average 428	Bump Plug to 1000	Breakdown	Type FreshWater	Volume 258.0 bbl	Density 8.34 lb/gal	
Avg. N2 Percent	Designed Slurry Volume 113.0 bbl		Displacement 90.2 bbl	Mix Water Temp 65 degF	Cement Circulated to Surface? <input checked="" type="checkbox"/>	Volume		
					Washed Thru Perfs <input type="checkbox"/>	To		
Customer or Authorized Representative Ed Asuchak			Schlumberger Supervisor Tom Leduc			Circulation Lost <input type="checkbox"/>	Job Completed <input checked="" type="checkbox"/>	