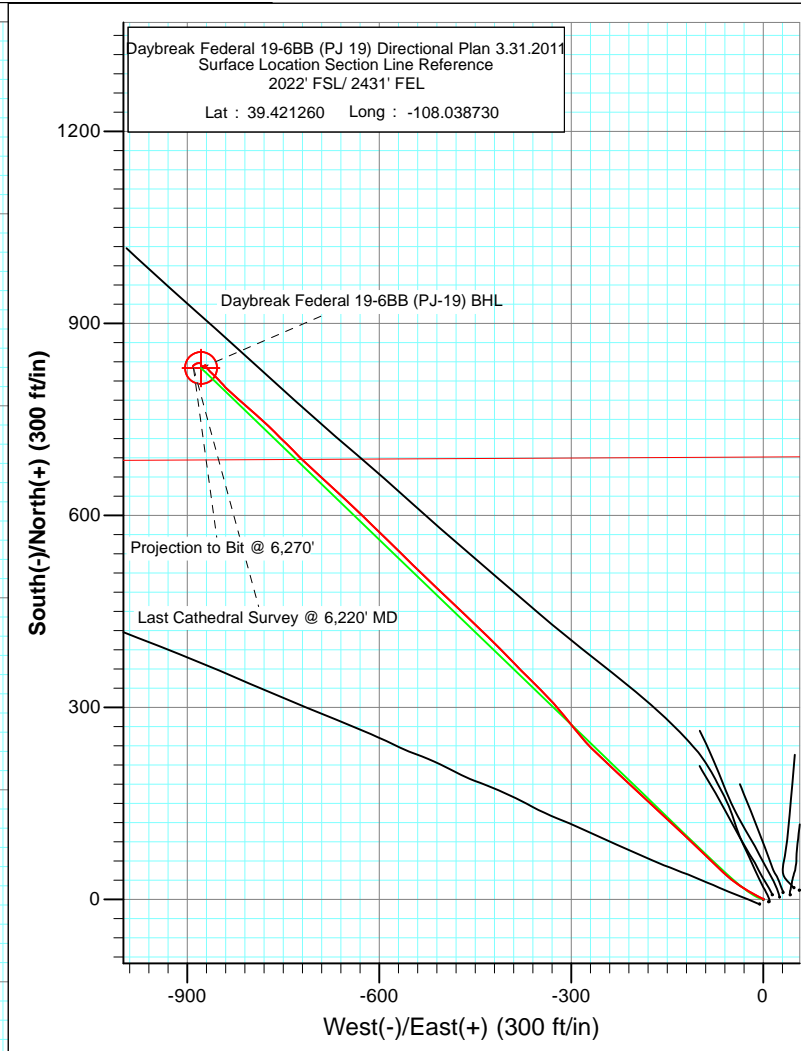
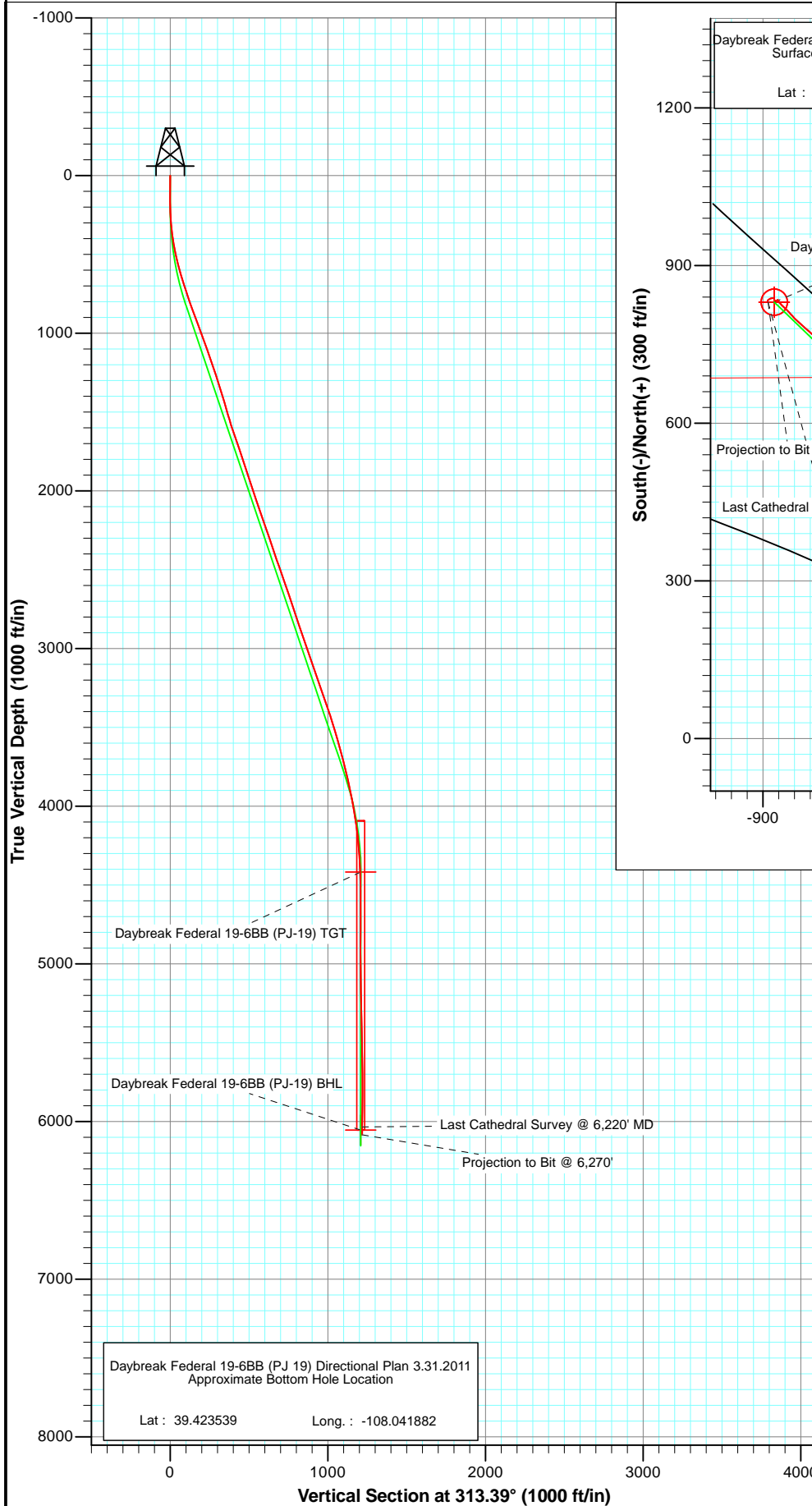




Project: S. Piceance (Parachute)  
 Site: NWSE S19-T7S-R95W (PJ-19 Pad)  
 Well: Daybreak Federal 19-6BB (PJ 19) Directional Plan 3.31.2011  
 Wellbore: DD  
 Plan: FINAL



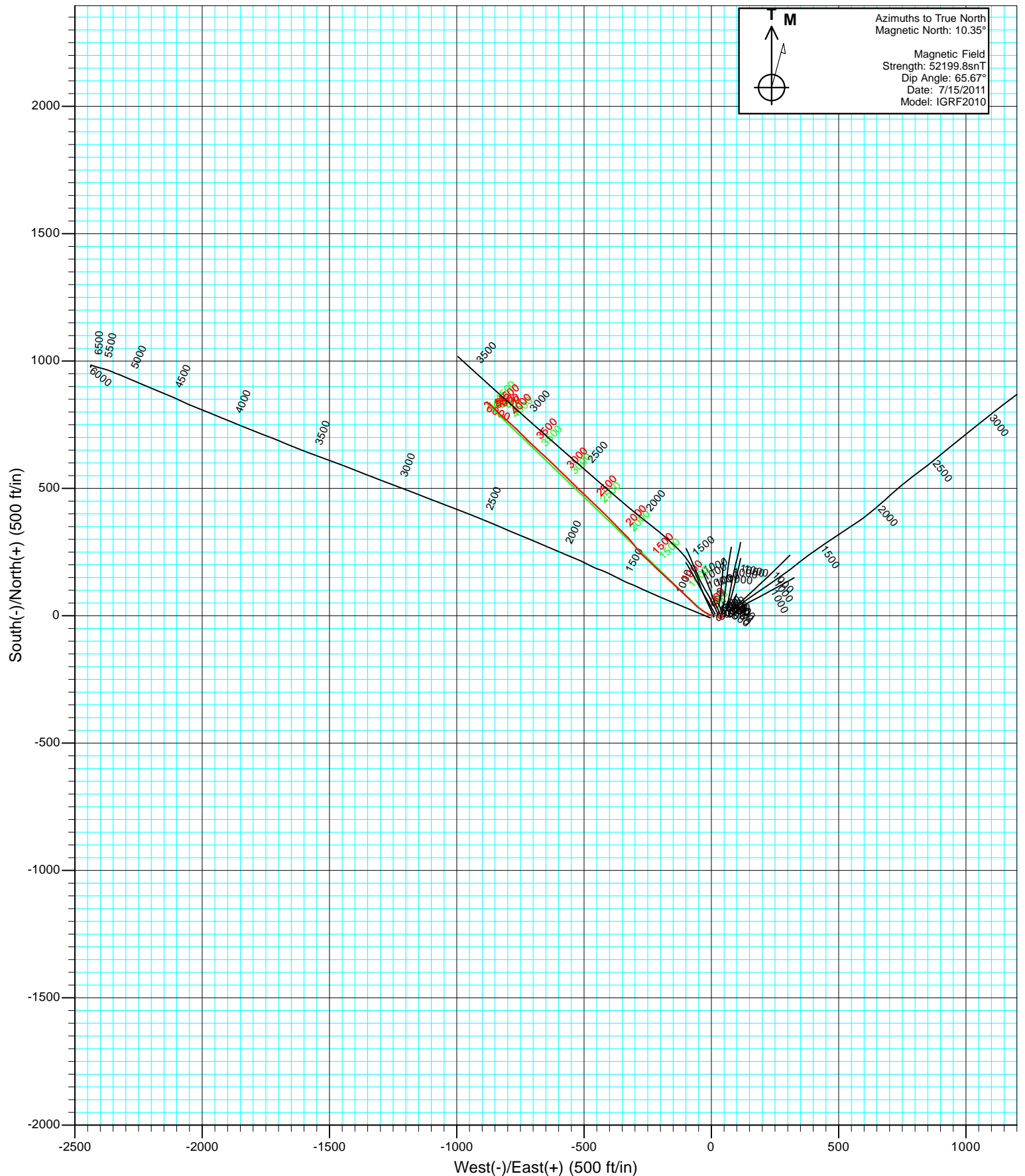
Azimuths to True North  
 Magnetic North: 10.35°

Magnetic Field  
 Strength: 52199.8nT  
 Dip Angle: 65.67°  
 Date: 7/15/2011  
 Model: IGRF2010

DESIGN DETAILS: DD				
Job#	115276 (SH), 115282 (MH); BH			
	KBE @ 5449.0ft (Original Well Elev)			
Target	Azimuth	Origin Type	N/S	E/W
Daybreak Federal 19-6BB (PJ-19) BHL	313.39	Slot	0.0	0.0

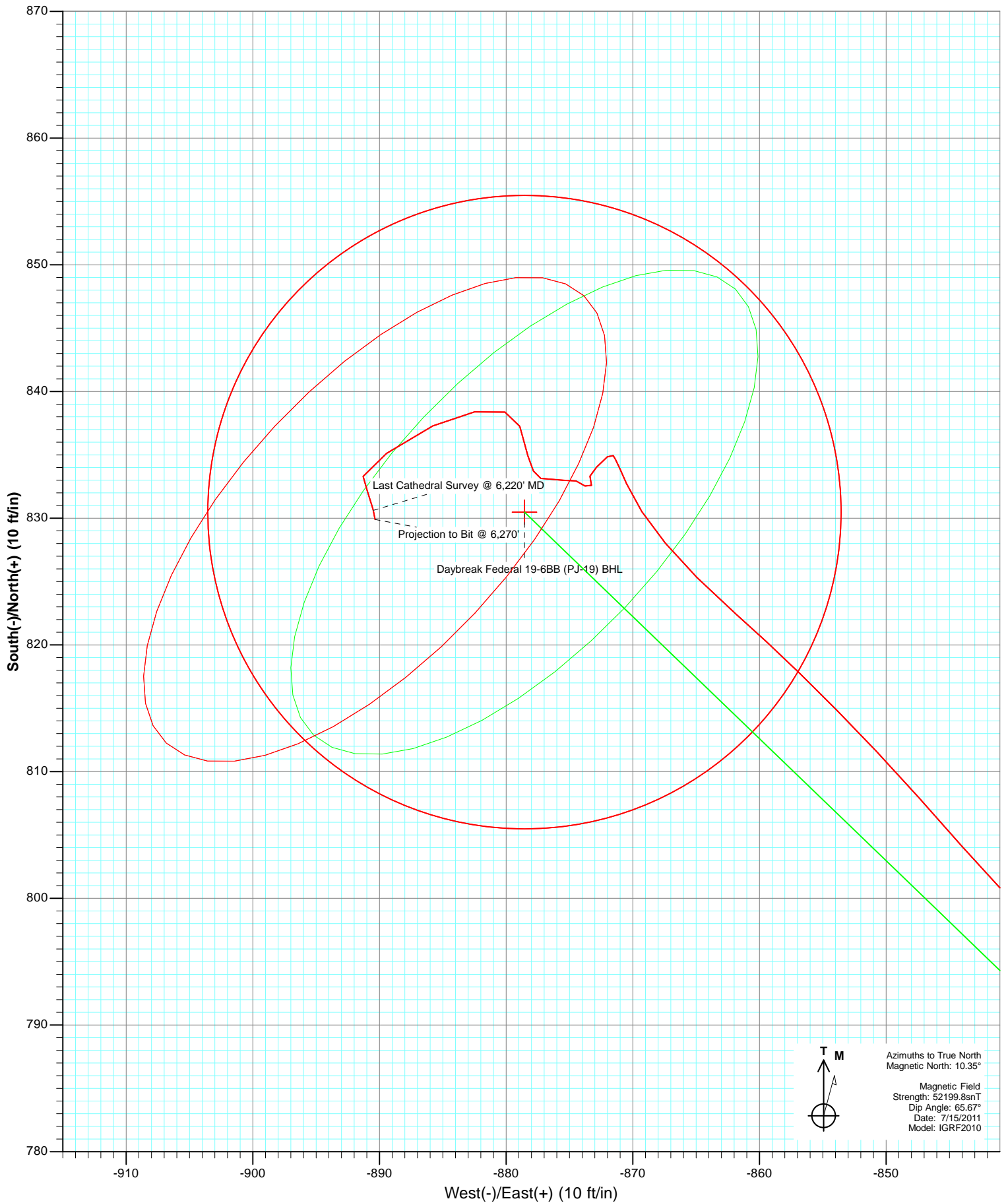


Project: S. Piceance (Parachute)  
Site: NWSE S19-T7S-R95W (PJ-19 Pad)  
Well: Daybreak Federal 19-6BB (PJ 19) Directional Plan 3.31.2011  
Wellbore: DD  
Design: FINAL





Project: S. Piceance (Parachute)  
Site: NWSE S19-T7S-R95W (PJ-19 Pad)  
Well: Daybreak Federal 19-6BB (PJ 19) Directional Plan 3.31.2011  
Wellbore: DD  
Plan: FINAL



# Cathedral Energy Services

## Survey Report

<b>Company:</b>	EnCana Oil & Gas (USA) Inc	<b>Local Co-ordinate Reference:</b>	Well Daybreak Federal 19-6BB (PJ 19) Directiona
<b>Project:</b>	S. Piceance (Parachute)	<b>TVD Reference:</b>	KBE @ 5449.0ft (Original Well Elev)
<b>Site:</b>	NWSE S19-T7S-R95W (PJ-19 Pad)	<b>MD Reference:</b>	KBE @ 5449.0ft (Original Well Elev)
<b>Well:</b>	Daybreak Federal 19-6BB (PJ 19) Directional	<b>North Reference:</b>	True
<b>Wellbore:</b>	Plan 3.31.2011	<b>Survey Calculation Method:</b>	Minimum Curvature
<b>Design:</b>	DD	<b>Database:</b>	USA EDM 5000 Multi Users DB

<b>Project</b>	S. Piceance (Parachute), Garfield County, CO		
<b>Map System:</b>	US State Plane 1983	<b>System Datum:</b>	Mean Sea Level
<b>Geo Datum:</b>	North American Datum 1983		
<b>Map Zone:</b>	Colorado Central Zone		

<b>Site</b>	NWSE S19-T7S-R95W (PJ-19 Pad)			
<b>Site Position:</b>		<b>Northing:</b>	1,588,373.67 ft	<b>Latitude:</b> 39.421340
<b>From:</b>	Lat/Long	<b>Easting:</b>	2,283,011.65 ft	<b>Longitude:</b> -108.038360
<b>Position Uncertainty:</b>	0.0 ft	<b>Slot Radius:</b>	13.200 in	<b>Grid Convergence:</b> -1.60 °

<b>Well</b>	Daybreak Federal 19-6BB (PJ 19) Directional Plan 3.31.2011			
<b>Well Position</b>	<b>+N/-S</b>	0.0 ft	<b>Northing:</b>	1,588,347.45 ft
	<b>+E/-W</b>	0.0 ft	<b>Easting:</b>	2,282,906.35 ft
<b>Position Uncertainty</b>	0.0 ft	<b>Wellhead Elevation:</b>	ft	<b>Ground Level:</b> 5,427.0 ft

<b>Wellbore</b>	DD				
<b>Magnetics</b>	<b>Model Name</b>	<b>Sample Date</b>	<b>Declination (°)</b>	<b>Dip Angle (°)</b>	<b>Field Strength (nT)</b>
	IGRF2010	7/15/2011	10.35	65.67	52,200

<b>Design</b>	DD			
<b>Audit Notes:</b>				
<b>Version:</b>	1.0	<b>Phase:</b>	ACTUAL	<b>Tie On Depth:</b> 0.0
<b>Vertical Section:</b>	<b>Depth From (TVD) (ft)</b>	<b>+N/-S (ft)</b>	<b>+E/-W (ft)</b>	<b>Direction (°)</b>
	0.0	0.0	0.0	313.39

<b>Survey Program</b>	<b>Date</b>	7/27/2011		
<b>From (ft)</b>	<b>To (ft)</b>	<b>Survey (Wellbore)</b>	<b>Tool Name</b>	<b>Description</b>
139.0	6,270.0	Survey #1 (DD)	MWD	Geolink MWD

<b>Survey</b>									
<b>Measured Depth (ft)</b>	<b>Inclination (°)</b>	<b>Azimuth (°)</b>	<b>Vertical Depth (ft)</b>	<b>+N/-S (ft)</b>	<b>+E/-W (ft)</b>	<b>Vertical Section (ft)</b>	<b>Dogleg Rate (°/100ft)</b>	<b>Build Rate (°/100ft)</b>	<b>Formations / Comments</b>
0.0	0.00	0.00	0.0	0.0	0.0	0.0	0.00	0.00	
139.0	0.30	69.30	139.0	0.1	0.3	-0.2	0.22	0.22	
169.0	0.40	347.00	169.0	0.3	0.4	-0.1	1.56	0.33	
200.0	1.10	302.20	200.0	0.5	0.1	0.3	2.79	2.26	
231.0	2.00	302.50	231.0	1.0	-0.6	1.1	2.90	2.90	
262.0	3.30	297.40	262.0	1.7	-1.8	2.5	4.26	4.19	
293.0	4.60	300.40	292.9	2.7	-3.7	4.6	4.24	4.19	
324.0	5.60	293.70	323.8	3.9	-6.2	7.2	3.75	3.23	
354.0	6.50	295.70	353.6	5.3	-9.0	10.2	3.08	3.00	
385.0	8.10	298.50	384.3	7.1	-12.5	14.0	5.29	5.16	
416.0	9.10	299.10	415.0	9.3	-16.6	18.5	3.24	3.23	
447.0	10.50	299.90	445.5	11.9	-21.2	23.6	4.54	4.52	
478.0	11.70	301.30	476.0	15.0	-26.3	29.4	3.97	3.87	

# Cathedral Energy Services

## Survey Report

<b>Company:</b>	EnCana Oil & Gas (USA) Inc	<b>Local Co-ordinate Reference:</b>	Well Daybreak Federal 19-6BB (PJ 19) Directiona
<b>Project:</b>	S. Piceance (Parachute)	<b>TVD Reference:</b>	KBE @ 5449.0ft (Original Well Elev)
<b>Site:</b>	NWSE S19-T7S-R95W (PJ-19 Pad)	<b>MD Reference:</b>	KBE @ 5449.0ft (Original Well Elev)
<b>Well:</b>	Daybreak Federal 19-6BB (PJ 19) Directional	<b>North Reference:</b>	True
<b>Wellbore:</b>	Open 3.31.2011	<b>Survey Calculation Method:</b>	Minimum Curvature
<b>Design:</b>	DD	<b>Database:</b>	USA EDM 5000 Multi Users DB

Survey									
Measured Depth (ft)	Inclination (°)	Azimuth (°)	Vertical Depth (ft)	+N/-S (ft)	+E/-W (ft)	Vertical Section (ft)	Dogleg Rate (°/100ft)	Build Rate (°/100ft)	Formations / Comments
508.0	12.80	302.20	505.3	18.3	-31.7	35.6	3.72	3.67	
539.0	13.60	303.60	535.4	22.2	-37.7	42.6	2.78	2.58	
570.0	14.80	307.70	565.5	26.6	-43.8	50.1	5.05	3.87	
600.0	15.50	308.60	594.5	31.4	-50.0	57.9	2.46	2.33	
692.0	17.50	314.50	682.7	48.8	-69.5	84.0	2.83	2.17	
784.0	18.60	314.00	770.1	68.7	-89.9	112.5	1.21	1.20	
877.0	19.90	313.60	857.9	89.9	-112.0	143.2	1.41	1.40	
969.0	20.80	312.60	944.2	111.8	-135.4	175.2	1.05	0.98	
1,075.0	20.10	313.20	1,043.5	137.0	-162.5	212.2	0.69	-0.66	
1,164.0	19.60	313.31	1,127.2	157.7	-184.5	242.4	0.56	-0.56	
1,259.0	18.72	312.25	1,217.0	178.9	-207.4	273.6	1.00	-0.93	
1,354.0	17.49	313.75	1,307.3	199.0	-229.0	303.1	1.38	-1.29	
1,450.0	16.35	313.66	1,399.1	218.3	-249.2	331.1	1.19	-1.19	
1,545.0	16.48	313.66	1,490.2	236.8	-268.6	357.9	0.14	0.14	
1,640.0	17.71	321.48	1,581.0	257.4	-287.4	385.7	2.74	1.29	
1,735.0	19.60	321.57	1,671.0	281.2	-306.3	415.8	1.99	1.99	
1,831.0	18.94	317.62	1,761.7	305.3	-326.8	447.2	1.52	-0.69	
1,926.0	17.18	315.51	1,852.0	326.7	-347.0	476.6	1.98	-1.85	
2,022.0	18.46	314.19	1,943.4	347.5	-367.9	506.0	1.40	1.33	
2,116.0	19.51	316.12	2,032.3	369.1	-389.4	536.6	1.30	1.12	
2,212.0	18.63	315.59	2,123.0	391.7	-411.3	567.9	0.93	-0.92	
2,307.0	19.38	313.75	2,212.8	413.4	-433.3	598.8	1.01	0.79	
2,402.0	19.12	313.40	2,302.5	435.0	-456.0	630.2	0.30	-0.27	
2,497.0	18.33	313.22	2,392.5	455.9	-478.1	660.7	0.83	-0.83	
2,592.0	19.47	314.10	2,482.4	477.1	-500.4	691.4	1.24	1.20	
2,687.0	18.98	314.19	2,572.1	498.9	-522.8	722.7	0.52	-0.52	
2,782.0	18.81	314.19	2,661.9	520.4	-544.9	753.5	0.18	-0.18	
2,878.0	18.54	313.92	2,752.9	541.8	-567.0	784.2	0.30	-0.28	
2,973.0	18.37	314.45	2,843.0	562.7	-588.6	814.3	0.25	-0.18	
3,068.0	19.20	314.19	2,932.9	584.1	-610.5	844.9	0.88	0.87	
3,163.0	18.37	313.40	3,022.9	605.3	-632.5	875.4	0.91	-0.87	
3,259.0	18.76	314.36	3,113.9	626.4	-654.6	906.0	0.52	0.41	
3,354.0	20.21	311.90	3,203.4	648.1	-677.7	937.7	1.75	1.53	
3,448.0	19.51	311.20	3,291.8	669.3	-701.6	969.6	0.79	-0.74	
3,543.0	18.72	316.12	3,381.6	690.7	-724.1	1,000.7	1.89	-0.83	
3,638.0	17.09	314.98	3,472.0	711.6	-744.5	1,029.9	1.75	-1.72	
3,733.0	16.08	313.92	3,563.1	730.6	-763.9	1,057.0	1.11	-1.06	
3,828.0	15.03	313.05	3,654.6	748.1	-782.4	1,082.5	1.13	-1.11	
3,923.0	13.75	311.38	3,746.6	764.0	-799.8	1,106.1	1.42	-1.35	
4,018.0	12.57	311.90	3,839.1	778.3	-816.0	1,127.7	1.25	-1.24	
4,113.0	11.82	310.23	3,932.0	791.5	-831.1	1,147.7	0.87	-0.79	
4,208.0	9.98	319.11	4,025.2	804.0	-843.9	1,165.6	2.62	-1.94	
4,303.0	7.87	315.24	4,119.1	814.9	-853.9	1,180.3	2.31	-2.22	
4,398.0	5.41	311.29	4,213.4	822.5	-861.9	1,191.3	2.63	-2.59	
4,493.0	4.13	320.16	4,308.1	828.0	-867.4	1,199.2	1.55	-1.35	
4,588.0	2.72	336.95	4,402.9	832.7	-870.5	1,204.6	1.81	-1.48	
4,683.0	0.26	308.56	4,497.9	834.9	-871.5	1,206.9	2.63	-2.59	
4,778.0	0.44	231.22	4,592.9	834.8	-872.0	1,207.2	0.48	0.19	
4,872.0	1.01	223.40	4,686.9	834.0	-872.9	1,207.2	0.61	0.61	
4,968.0	0.13	150.54	4,782.9	833.3	-873.4	1,207.1	1.02	-0.92	
5,063.0	0.75	173.83	4,877.9	832.6	-873.3	1,206.6	0.67	0.65	
5,159.0	0.97	314.89	4,973.9	832.5	-873.8	1,206.9	1.69	0.23	
5,254.0	1.36	263.65	5,068.9	833.0	-875.5	1,208.4	1.12	0.41	

# Cathedral Energy Services

## Survey Report

<b>Company:</b>	EnCana Oil & Gas (USA) Inc	<b>Local Co-ordinate Reference:</b>	Well Daybreak Federal 19-6BB (PJ 19) Directional
<b>Project:</b>	S. Piceance (Parachute)	<b>TVD Reference:</b>	KBE @ 5449.0ft (Original Well Elev)
<b>Site:</b>	NWSE S19-T7S-R95W (PJ-19 Pad)	<b>MD Reference:</b>	KBE @ 5449.0ft (Original Well Elev)
<b>Well:</b>	Daybreak Federal 19-6BB (PJ 19) Directional	<b>North Reference:</b>	True
<b>Wellbore:</b>	Open 3.31.2011	<b>Survey Calculation Method:</b>	Minimum Curvature
<b>Design:</b>	DD	<b>Database:</b>	USA EDM 5000 Multi Users DB

Survey									
Measured Depth (ft)	Inclination (°)	Azimuth (°)	Vertical Depth (ft)	+N/-S (ft)	+E/-W (ft)	Vertical Section (ft)	Dogleg Rate (°/100ft)	Build Rate (°/100ft)	Formations / Comments
5,349.0	0.88	292.30	5,163.8	833.1	-877.3	1,209.8	0.76	-0.51	
5,444.0	1.85	346.88	5,258.8	834.9	-878.3	1,211.8	1.60	1.02	
5,540.0	1.05	341.17	5,354.8	837.3	-878.9	1,213.9	0.85	-0.83	
5,635.0	1.14	288.52	5,449.8	838.4	-880.1	1,215.5	1.03	0.09	
5,730.0	1.85	259.34	5,544.7	838.4	-882.5	1,217.2	1.07	0.75	
5,826.0	2.33	244.93	5,640.7	837.3	-885.8	1,218.9	0.74	0.50	
5,921.0	2.81	234.73	5,735.6	835.1	-889.4	1,220.0	0.70	0.51	
6,016.0	0.57	174.00	5,830.6	833.3	-891.3	1,220.1	2.71	-2.36	
6,111.0	0.88	157.22	5,925.6	832.2	-891.0	1,219.1	0.39	0.33	
6,210.0	0.83	168.20	6,024.5	830.8	-890.5	1,217.8	0.17	-0.05	
6,220.0	0.83	168.82	6,034.5	830.6	-890.5	1,217.7	0.09	0.00	Last Cathedral Survey @ 6,220' MD Projection to Bit @ 6,270'
6,270.0	0.83	168.82	6,084.5	829.9	-890.3	1,217.1	0.00	0.00	

Targets									
Target Name	Dip Angle (°)	Dip Dir. (°)	TVD (ft)	+N/-S (ft)	+E/-W (ft)	Northing (ft)	Easting (ft)	Latitude	Longitude
Daybreak Federal 19-6B - hit/miss target - Shape	0.00	0.00	4,417.0	830.5	-878.5	1,589,202.15	2,282,051.35	39.423540	-108.041840
- survey misses target center by 8.3ft at 4602.1ft MD (4417.0 TVD, 833.3 N, -870.7 E) - Point									
Daybreak Federal 19-6B - survey misses target center by 22.8ft at 6220.0ft MD (6034.5 TVD, 830.6 N, -890.5 E) - Circle (radius 25.0)	0.00	0.00	6,054.0	830.5	-878.5	1,589,202.15	2,282,051.35	39.423540	-108.041840

Survey Annotations					
Measured Depth (ft)	Vertical Depth (ft)	Local Coordinates			
		+N/-S (ft)	+E/-W (ft)	Comment	
6,220.0	6,034.5	830.6	-890.5	Last Cathedral Survey @ 6,220' MD Projection to Bit @ 6,270'	
6,270.0	6,084.5	829.9	-890.3		

Checked By: \_\_\_\_\_ Approved By: \_\_\_\_\_ Date: \_\_\_\_\_