

---

# **XTO ENERGY INC EBUSINESS**

---

**R&G 26-3**

**Colorado**

## **Cement Surface Casing**

**01-Nov-2011**

### **Job Site Documents**

## The Road to Excellence Starts with Safety

Sold To #: 353810	Ship To #: 353810	Quote #:	Sales Order #: 9031111
Customer: XTO ENERGY INC EBUSINESS	Customer Rep: Rensink, Ryan		
Well Name: R&G	Well #: 26-3	API/UWI #: 05-067-09862	
Field:	City (SAP): FORT WORTH	County/Parish:	State: Colorado
Contractor: AWS	Rig/Platform Name/Num: AWS 580		
Job Purpose: Cement Surface Casing			
Well Type: Producing Well	Job Type: Cement Surface Casing		
Sales Person: TALLMAN, JESS	Srv Supervisor: DOBBS, GARY	MBU ID Emp #:	122012

### Job Personnel

HES Emp Name	Exp Hrs	Emp #	HES Emp Name	Exp Hrs	Emp #	HES Emp Name	Exp Hrs	Emp #
DOBBS, GARY D	8.5	122012	JOJOLA, LEMONT	8.5	418802	MILLER, DAVID A	8.5	484499

### Equipment

HES Unit #	Distance-1 way	HES Unit #	Distance-1 way	HES Unit #	Distance-1 way	HES Unit #	Distance-1 way
10011433C	60 mile	11223557	60 mile	11338239	60mile	11583928	45 mile

### Job Hours

Date	On Location Hours	Operating Hours	Date	On Location Hours	Operating Hours	Date	On Location Hours	Operating Hours
11/1/11	8.5	3						

TOTAL	Total is the sum of each column separately							
-------	--	--	--	--	--	--	--	--

### Job

Formation Name	Formation Depth (MD)	Top	Bottom	Form Type	Job depth MD	Water Depth	Perforation Depth (MD)	From	To
				BHST	334. ft				

### Job Times

Date	Time	Time Zone
01 - Nov - 2011	05:00	MST
01 - Nov - 2011	08:30	MST
01 - Nov - 2011	15:10	MST
01 - Nov - 2011	15:50	MST
01 - Nov - 2011	17:00	MST

### Well Data

Description	New / Used	Max pressure psig	Size in	ID in	Weight lbm/ft	Thread	Grade	Top MD ft	Bottom MD ft	Top TVD ft	Bottom TVD ft
12 1/4" Open Hole				12.25				.	334.	.	334.
8 5/8" Surface Casing	Unknown		8.625	8.097	24.		J-55	.	334.	.	334.

### Sales/Rental/3<sup>rd</sup> Party (HES)

Description	Qty	Qty uom	Depth	Supplier
PLUG,CMTG, TOP, 8 5/8, HWE, 7.20 MIN/8.09 MA	1	EA		
SUGAR, GRANULATED, IMPERIAL	50	LB		

### Tools and Accessories

Type	Size	Qty	Make	Depth	Type	Size	Qty	Make	Depth	Type	Size	Qty	Make
Guide Shoe					Packer					Top Plug			
Float Shoe					Bridge Plug					Bottom Plug			
Float Collar					Retainer					SSR plug set			
Insert Float										Plug Container			
Stage Tool										Centralizers			

### Miscellaneous Materials

Gelling Agt	Conc	Surfactant	Conc	Acid Type	Qty	Conc	%
Treatment Fld	Conc	Inhibitor	Conc	Sand Type	Size		Qty

### Fluid Data

Stage/Plug #: 1									
Fluid #	Stage Type	Fluid Name	Qty	Qty uom	Mixing Density lbm/gal	Yield ft3/sk	Mix Fluid Gal/sk	Rate bbl/min	Total Mix Fluid Gal/sk

Stage/Plug #: 1									
Fluid #	Stage Type	Fluid Name	Qty	Qty uom	Mixing Density lbm/gal	Yield ft <sup>3</sup> /sk	Mix Fluid Gal/sk	Rate bbl/min	Total Mix Fluid Gal/sk
1	Water Spacer		10.00	bbl	8.33	.0	.0	.0	
2	Primary Cement	CMT - PREMIUM - CLASS G, 94 LB SK (100003685)	250.0	sacks	15.8	1.17	5.0		5.0
	94 lbm	CMT - PREMIUM - CLASS G REG OR TYPE V, BULK (100003685)							
	2 %	CALCIUM CHLORIDE - HI TEST PELLET (100005053)							
	0.125 lbm	POLY-E-FLAKE (101216940)							
	4.998 Gal	FRESH WATER							
3	H2O Displacement		21.20	bbl	8.33	.0	.0	.0	
Calculated Values		Pressures		Volumes					
Displacement	21.2	Shut In: Instant	225	Lost Returns		Cement Slurry	52	Pad	
Top Of Cement	0	5 Min		Cement Returns	25	Actual Displacement	22	Treatment	
Frac Gradient		15 Min		Spacers		Load and Breakdown		Total Job	
Rates									
Circulating	3	Mixing	4	Displacement	3	Avg. Job	3		
Cement Left In Pipe	Amount	45 ft	Reason	Shoe Joint					
Frac Ring # 1 @	ID	Frac ring # 2 @	ID	Frac Ring # 3 @	ID	Frac Ring # 4 @	ID		
The Information Stated Herein Is Correct				Customer Representative Signature					

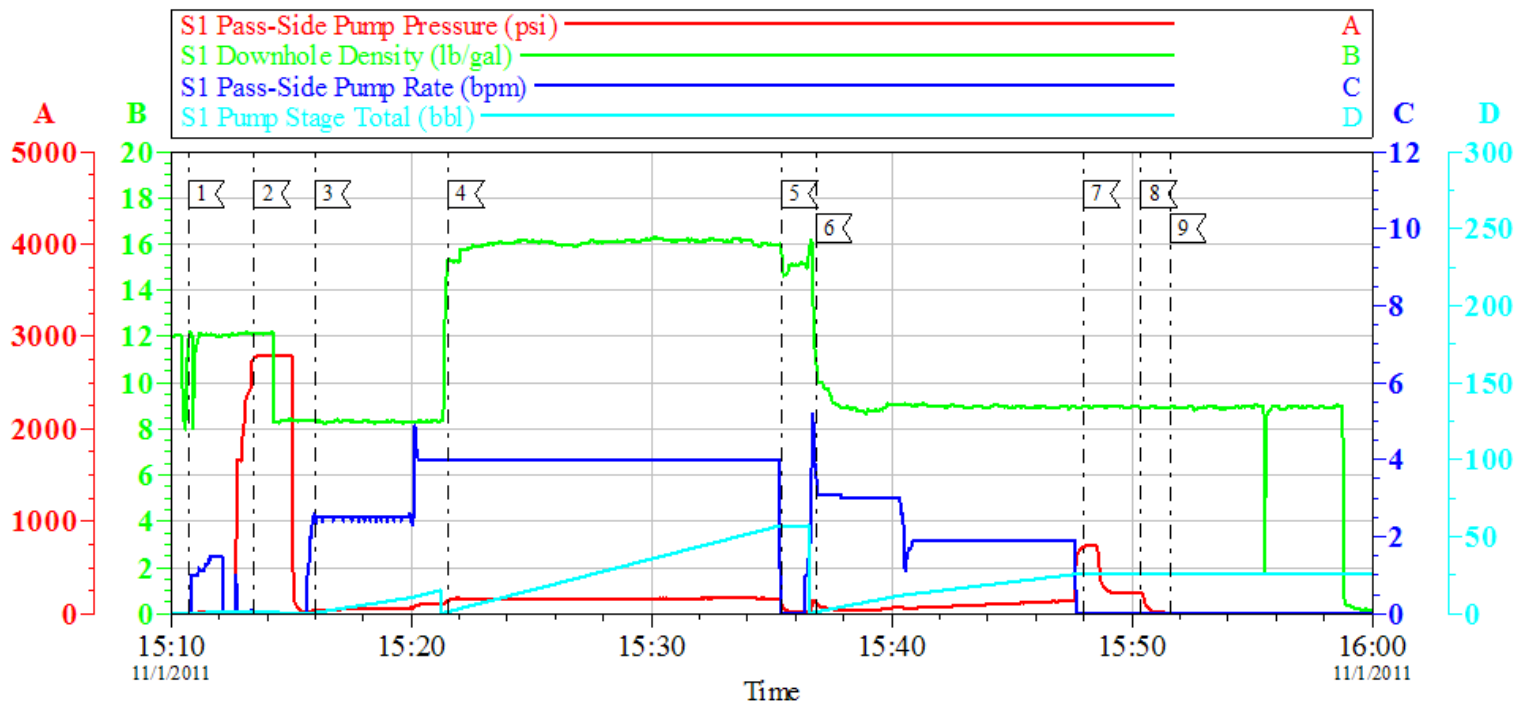
*The Road to Excellence Starts with Safety*

<b>Sold To #:</b> 353810	<b>Ship To #:</b> 353810	<b>Quote #:</b>	<b>Sales Order #:</b> 9031111
<b>Customer:</b> XTO ENERGY INC EBUSINESS		<b>Customer Rep:</b> Rensink, Ryan	
<b>Well Name:</b> R&G	<b>Well #:</b> 26-3	<b>API/UWI #:</b> 05-067-09862	
<b>Field:</b>	<b>City (SAP):</b> FORT WORTH	<b>County/Parish:</b>	<b>State:</b> Colorado
<b>Legal Description:</b>			
<b>Lat:</b> N 0 deg. OR N 0 deg. 0 min. 0 secs.		<b>Long:</b> E 0 deg. OR E 0 deg. 0 min. 0 secs.	
<b>Contractor:</b> AWS		<b>Rig/Platform Name/Num:</b> AWS 580	
<b>Job Purpose:</b> Cement Surface Casing			<b>Ticket Amount:</b>
<b>Well Type:</b> Producing Well		<b>Job Type:</b> Cement Surface Casing	
<b>Sales Person:</b> TALLMAN, JESS		<b>Srvc Supervisor:</b> DOBBS, GARY	<b>MBU ID Emp #:</b> 122012

Activity Description	Date/Time	Cht #	Rate bbl/min	Volume bbl		Pressure psig		Comments
				Stage	Total	Tubing	Casing	
Pre-Convoy Safety Meeting	11/01/2011 06:45							ALL HES EMPLOYEES
Arrive at Location from Service Center	11/01/2011 08:30							
Assessment Of Location Safety Meeting	11/01/2011 08:35							ALL HES EMPLOYEES
Wait on Customer or Customer Sub-Contractor Equip	11/01/2011 08:45							WAIT ON RIG CREW TO PULL OUT OF HOLE WITH DRILL PIPE & RUN CASING
Wait on Customer or Customer Sub-Contractor Equipm	11/01/2011 13:30							CASING ON BOTTOM, TD OF HOLE IS 385', RAN 379' OF 8 5/8" 24# CASING, FLOAT COLLAR @ 334'
Pre-Rig Up Safety Meeting	11/01/2011 13:45							ALL HES EMPLOYEES
Rig-Up Equipment	11/01/2011 14:00							RIG UP PUMP TRUCK 1 BULK TRUCK, & PICKUP
Pre-Job Safety Meeting	11/01/2011 14:55							EVERYONE ON LOCATION
Start Job	11/01/2011 15:10							
Test Lines	11/01/2011 15:13					2500.0		
Pump Spacer 1	11/01/2011 15:15		3	20			39.0	FRESH WATER
Pump Cement	11/01/2011 15:21		5	52			145.0	MIX AND PUMP 250 SKS OF TYPE G MIXED @ 15.8#, 1.17 YEILD, 5.0 GPS FRESH WATER
Drop Top Plug	11/01/2011 15:35							

Activity Description	Date/Time	Cht #	Rate bbl/ min	Volume bbl		Pressure psig		Comments
				Stage	Total	Tubing	Casing	
Pump Displacement	11/01/2011 15:36		3	11			122.0	FRESH WATER
Bump Plug	11/01/2011 15:47		2	10.2	21.2		724.0	FRESH WATER
Shut In Well	11/01/2011 15:50						225.0	
Cement Returns to Surface	11/01/2011 15:50							CIRCULATED 22 BBLS OF CEMENT TO PIT
End Job	11/01/2011 15:51							

### XTO R & G #26-3 / 8 5/8" SURFACE



#### Local Event Log

Intersection		SPPP	Intersection	SPPP
1	START JOB	15:10:44 -1.000	2	TEST LINES 15:13:28 2770
3	PUMP SPACER 1	15:15:59 39.00	4	PUMP CEMENT 15:21:33 145.3
5	DROP PLUG	15:35:26 92.09	6	PUMP DISPLACEMENT 15:36:51 122.4
7	BUMP PLUG	15:47:59 724.5	8	SHUT IN WELL 15:50:23 225.0
9	END JOB	15:51:36 11.00		

Customer: XTO	Job Date: 01-Nov-2011	Sales Order #: 9031111
Well Description: R & G #26-3	Job Type: SURFACE	ADC Used: YES
Customer Rep: MARK N.	Service Supervisor: DONNY DOBBS	Operator/Pump: DAVE MILLER / 11223557

Opti Cem v6.4.9  
01-Nov-11 16:01