



02055361

## GENESIS GAS &amp; OIL COLORADO, LLC

Wellbore Diagram

Calamity Ridge II Unit #14-31

NW SE Section 14, T1N, R100W

API #05-103-10880

Lease #COC065645

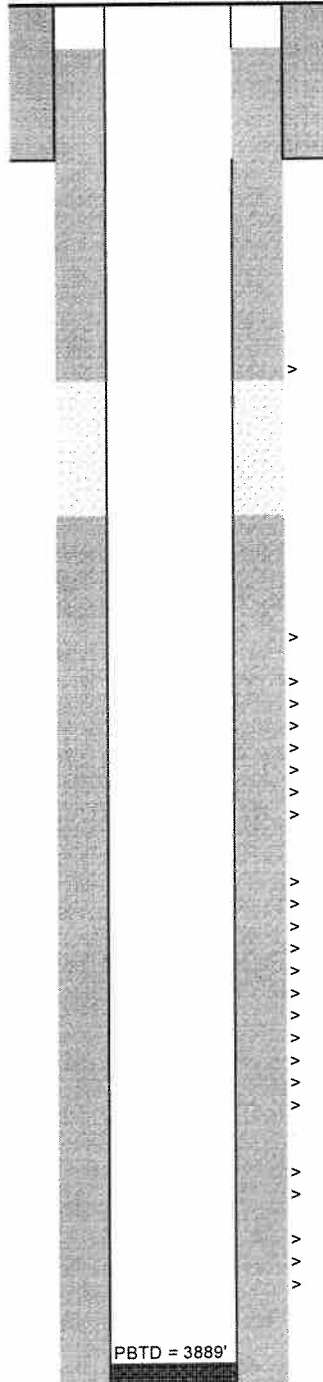
Rio Blanco County, Colorado

Revised 11/8/11

RECEIVED

DEC 07 2011

COGCC

KB = 6,720'  
GL = 6,709'

TOC for 5-1/2" casing at 480'

8-5/8", 24#, J-55 csg at 1436', cmt'd to surface w/ 410 sx VariChem cmt

Cement circulation perms  
2530' - 2532'

Poor cement from 2840' to 2530'

Formation Tops

TOC at 2840'

Coal Intervals:  
All perms at 4 SPF, except 3376-86 at 6 SPF

Stage 3 (18' perfed)

- > 3082' - 3083'
- > 3111' - 3112' (misfire, not planned)
- > 3114' - 3116'
- > 3118' - 3122'
- > 3149' - 3150'
- > 3187' - 3189'
- > 3216' - 3217'
- > 3224' - 3226'
- > 3230' - 3234'

Stage 2 (39' perfed)

- > 3282' - 3286'
- > 3298' - 3301'
- > 3312' - 3316'
- > 3335' - 3338'
- > 3362' - 3363'
- > 3365' - 3367'
- > 3376' - 3386' (6 SPF)
- > 3388' - 3390'
- > 3407' - 3409'
- > 3422' - 3424'
- > 3429' - 3435'

Stage 1 (11' perfed)

- > 3492' - 3493'
- > 3505' - 3507'
- > 3516' - 3519'
- > 3546' - 3548'
- > 3585' - 3587'
- > 3593' - 3594'

PBTD = 3889'

TD = 3,938'  
11/4/20115-1/2", 15.5# csg, J-55 at 3,934', cmt'd w/ 240 sx EconoCem at 12.7 ppg  
& 190 sx ExpandaCem at 13.5 ppg

Maximum deviations = 4.07 degrees