
OXY GRAND JUNCTION EBUSINESS

**CC 697-08-41A
GRAND VALLEY
Garfield County , Colorado**

**Cement Surface Casing
18-Oct-2011**

Post Job Summary

The Road to Excellence Starts with Safety

Sold To #: 344034	Ship To #: 8473966	Quote #:	Sales Order #: 8473966
Customer: OXY GRAND JUNCTION EBUSINESS	Customer Rep: Adam, Derick		
Well Name: CC	Well #: 697-08-41A	API/UWI #: 05-045-20065	
Field: GRAND VALLEY	City (SAP): Parachute	County/Parish: Garfield	State: Colorado
Contractor: H&P Drilling	Rig/Platform Name/Num: H&P 330		
Job Purpose: Cement Surface Casing			
Well Type: Development Well	Job Type: Cement Surface Casing		
Sales Person: HIMES, JEFFREY	Srv Supervisor: KUKUS, CRAIG	MBU ID Emp #: 369124	

Job Personnel

HES Emp Name	Exp Hrs	Emp #	HES Emp Name	Exp Hrs	Emp #	HES Emp Name	Exp Hrs	Emp #
KUKUS, CRAIG A	14	369124	SLAUGHTER, JESSE Dean	14	454315	SMITH, DUSTIN Michael	14	418015
WINKER, STEVEN	14	478776						

Equipment

HES Unit #	Distance-1 way	HES Unit #	Distance-1 way	HES Unit #	Distance-1 way	HES Unit #	Distance-1 way
10248057	120 mile	10867094	120 mile	10872429	120 mile	10897925	120 mile
11259883	120 mile	11360883	120 mile	6374L	120 mile		

Job Hours

Date	On Location Hours	Operating Hours	Date	On Location Hours	Operating Hours	Date	On Location Hours	Operating Hours
10/18/11	7.5	1.5	10/19/11	6.5	6.5			

TOTAL	Total is the sum of each column separately							
-------	--	--	--	--	--	--	--	--

Job

Job Times

Formation Name	Formation Depth (MD)	Top	Bottom	Called Out	Date	Time	Time Zone
Form Type			BHST	On Location	23 - Aug - 2011	08:45	MST
Job depth MD	2739. ft		Job Depth TVD	Job Started	18 - Oct - 2011	14:30	MST
Water Depth			Wk Ht Above Floor	Job Completed	18 - Oct - 2011	23:18	MST
Perforation Depth (MD)	From		To	Job Completed	18 - Oct - 2011	05:09	MST
				Departed Loc	18 - Oct - 2011	06:20	MST

Well Data

Description	New / Used	Max pressure psig	Size in	ID in	Weight lbf/ft	Thread	Grade	Top MD ft	Bottom MD ft	Top TVD ft	Bottom TVD ft
14 3/4" Open Hole				14.75				.	2700.		
9 5/8" Surface Casing	New		9.625	8.921	36.		J-55	.	2700.		

Sales/Rental/3rd Party (HES)

Description	Qty	Qty uom	Depth	Supplier
PLUG,CMTG,TOP,9 5/8,HWE,8.16 MIN/9.06 MA	1	EA		

Tools and Accessories

Type	Size	Qty	Make	Depth	Type	Size	Qty	Make	Depth	Type	Size	Qty	Make
Guide Shoe					Packer					Top Plug	9 5/8	1	HES
Float Shoe					Bridge Plug					Bottom Plug			
Float Collar					Retainer					SSR plug set			
Insert Float										Plug Container	9 5/8	1	HES
Stage Tool										Centralizers			

Miscellaneous Materials

Gelling Agt	Conc	Surfactant	Conc	Acid Type	Qty	Conc	%
Treatment Fld	Conc	Inhibitor	Conc	Sand Type	Size	Qty	

Fluid Data

Stage/Plug #: 1

Fluid #	Stage Type	Fluid Name	Qty	Qty uom	Mixing Density lbm/gal	Yield ft ³ /sk	Mix Fluid Gal/sk	Rate bbl/min	Total Mix Fluid Gal/sk
1	Water Spacer		20.00	bbl	8.33	.0	.0	4	
2	Gel Spacer		20.00	bbl	.	.0	.0	4	
3	Water Spacer		20.00	bbl	.	.0	.0	4	
4	VersaCem Lead Cement	VERSACEM (TM) SYSTEM (452010)	1050.0	sacks	12.3	2.33	12.62	6.5	12.62
	12.62 Gal	FRESH WATER							
5	VersaCem Tail Cement	VERSACEM (TM) SYSTEM (452010)	170.0	sacks	12.8	2.07	10.67	6.5	10.67
	10.67 Gal	FRESH WATER							
6	Displacement		206.00	bbl	.	.0	.0	6	
7	Topout Cement	HALCEM (TM) SYSTEM (452986)	54.0	sacks	12.5	1.97	10.96	2.5	10.96
	10.96 Gal	FRESH WATER							
Calculated Values		Pressures		Volumes					
Displacement	206	Shut In: Instant		Lost Returns	0	Cement Slurry	517	Pad	
Top Of Cement	SURFACE	5 Min		Cement Returns	178	Actual Displacement	206	Treatment	
Frac Gradient		15 Min		Spacers	60	Load and Breakdown		Total Job	794
Rates									
Circulating	RIG	Mixing	6.5	Displacement	6	Avg. Job	6		
Cement Left In Pipe	Amount	46.09 ft	Reason	Shoe Joint					
Frac Ring # 1 @	ID		Frac ring # 2 @	ID		Frac Ring # 3 @	ID	Frac Ring # 4 @	ID
The Information Stated Herein Is Correct				Customer Representative Signature					

The Road to Excellence Starts with Safety

Sold To #: 344034		Ship To #: 8473966		Quote #:		Sales Order #: 8473966	
Customer: OXY GRAND JUNCTION EBUSINESS				Customer Rep: Adam, Derick			
Well Name: CC			Well #: 697-08-41A			API/UWI #: 05-045-20065	
Field: GRAND VALLEY		City (SAP): Parachute		County/Parish: Garfield			State: Colorado
Legal Description:							
Lat: N 0 deg. OR N 0 deg. 0 min. 0 secs.				Long: E 0 deg. OR E 0 deg. 0 min. 0 secs.			
Contractor: H&P Drilling			Rig/Platform Name/Num: H&P 330				
Job Purpose: Cement Surface Casing						Ticket Amount:	
Well Type: Development Well			Job Type: Cement Surface Casing				
Sales Person: HIMES, JEFFREY			Srvc Supervisor: KUKUS, CRAIG			MBU ID Emp #: 369124	

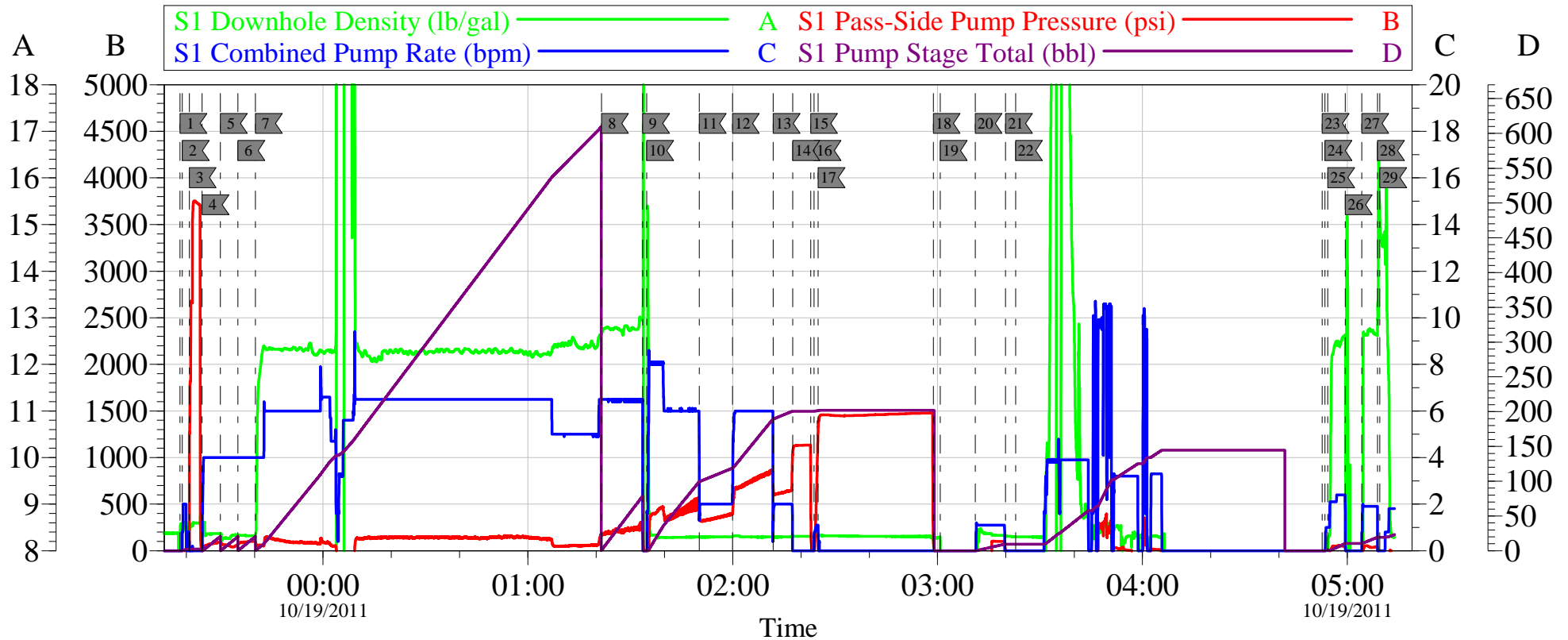
Activity Description	Date/Time	Cht #	Rate bbl/min	Volume bbl		Pressure psig		Comments
				Stage	Total	Tubing	Casing	
Call Out	10/18/2011 08:45							
Depart Yard Safety Meeting	10/18/2011 11:00							SAFETY MEETING INVOLVING THE ENTIRE CMT CREW
Arrive At Loc	10/18/2011 14:30							RIG SETTING UP TO RUN CSG
Assessment Of Location Safety Meeting	10/18/2011 14:40							ASSESSMENT OF LOCATION INVOLVING THE ENTIRE CMT CREW
Pre-Rig Up Safety Meeting	10/18/2011 14:55							SAFETY MEETING INVOLVING THE ENTIRE CMT CREW
Rig-Up Equipment	10/18/2011 15:00							RIG IRON UP TO CELLAR AREA / PUMP JOB OFF LINE THRU HES CMT HEAD
Circulate Well	10/18/2011 21:00		10				444.0	RIG/HAD GOOD RETURNS
Pre-Job Safety Meeting	10/18/2011 23:00							SAFETY MEETING INVOLVING EVERYONE ON LOCATION
Start Job	10/18/2011 23:18							TD 2739 FT TP 2723.32 FT SJ 46.09 FT PIPE 9 5/8 IN 36# OH 14 3/4 IN MUD WT 9.5#
Other	10/18/2011 23:18		2	2			15.0	FILL LINES WIT FRESH WATER
Pressure Test	10/18/2011 23:20		0.5			3500.0		PRESSURE TEST GOOD
Pump Spacer 1	10/18/2011 23:24		4	20			127.0	FRESH WATER SPACER

Activity Description	Date/Time	Cht #	Rate bbl/min	Volume bbl		Pressure psig		Comments
				Stage	Total	Tubing	Casing	
Pump Spacer 1	10/18/2011 23:29		4	20			88.0	PUMP GEL SPACER
Pump Spacer 1	10/18/2011 23:35		4	20			103.0	PUMP H2O SPACER
Pump Lead Cement	10/18/2011 23:40		6.5	435			170.0	PUMP 1050 SKS LEAD CEMENT AT 12.3 PPG 2.33 Y 12.62 GAL/SKS 7 BOXES TUFF FIBER
Pump Tail Cement	10/19/2011 01:21		6.5	62			280.0	PUMP 170 SKS TAILS CEMENT AT 12.8 PPG 2.07 Y 10.67 GAL/SK
Shutdown	10/19/2011 01:33							
Drop Top Plug	10/19/2011 01:33							PLUG LEFT THE PLUG CONTAINER
Pump Displacement	10/19/2011 01:34		6	206			860.0	PUMP FRESH WATER DISPLACEMENT
Slow Rate	10/19/2011 01:50		2	110			380.0	SLOW RATE TO 2 BBL MIN / BRING RATE BACK UP TO 6 BBL MIN AT 120 BBL GONE
Slow Rate	10/19/2011 02:11		2	190			625.0	SLOW RATE TO 2 BBL MIN
Bump Plug	10/19/2011 02:17		2	206			1120.0	PLUG LANDED AT 650 PSI
Check Floats	10/19/2011 02:22							FLOATS HELD / GOT 1 BBL BACK TO TANKS
Pressure Up Tubing	10/19/2011 02:23		2				1500.0	PRESSURE UP CSG AND HOLD 30 MINS
Check Floats	10/19/2011 02:58							FLOATS HELD /DID NOT GET RETURNS UNTIL 420 BBLS LEAD CEMENT GONE AND HELD RETURNS FOR REMAINDER OF JOB / CEMENT TO SURFACE TOTAL 170 BBLS
Shutdown	10/19/2011 03:00							SHUT DOWN/SWAPE LINES OVER TO PARASITE LINE
Pump Water	10/19/2011 03:11		2	10			115.0	PUMP SUGAR WATER THRU PARASITE LINE
Shutdown	10/19/2011 03:19							SHUT DOWN / CLEAN UP TO CELLAR / SHUT DOWN WAIT FOR TAG
Start Job	10/19/2011 04:52							START TOP OUT

Cementing Job Log

Activity Description	Date/Time	Cht #	Rate bbl/min	Volume bbl		Pressure psig		Comments
				Stage	Total	Tubing	Casing	
Other	10/19/2011 04:53		1.5	1.5			2.0	PRIME LINES
Pump Cement	10/19/2011 04:54		2.5	11			64.0	PUMP 54 SKS TOP OUT CEMENT AT 12.5 PPG 1.97 Y 10.96 GAL/SK
Shutdown	10/19/2011 04:59							SHUT DOWN / HESITATE
Pump Cement	10/19/2011 05:04		2.5	8			64.0	CEMENT HELD IN PLACE / PUMP REMAINDER 8 BBLS TO CELLAR
Shutdown	10/19/2011 05:08							SHUT DOWN/ TOTAL TOP OUT PUMPED 19 BBLS
End Job	10/19/2011 05:09							
Pre-Rig Down Safety Meeting	10/19/2011 05:11							SAFETY MEETING INVOLVING THE ENTIRE CMT CREW
Rig-Down Equipment	10/19/2011 05:20							
Safety Meeting - Departing Location	10/19/2011 06:25							SAFETY MEETING INVOLVING THE ENTIRE CMT CREW
Comment	10/19/2011 06:30							THANK YOU FOR USING HALLIBURTON, CRAIG KUKUS AND CREW

OXY TOP OUT #1 HP 330



Local Event Log

1 START JOB	10/18/2011 23:18:08	2 PRIME LINES	10/18/2011 23:18:47	3 PRESSURE TEST	10/18/2011 23:20:50
4 PUMP H2O SPACER	10/18/2011 23:24:35	5 PUMP GEL SPACER	10/18/2011 23:29:57	6 PUMP H2O SPACER	10/18/2011 23:35:06
7 PUMP LEAD CEMENT	10/18/2011 23:40:11	8 PUMP TAIL CEMENT	10/19/2011 01:21:35	9 SHUT DOWN/DROP PLUG	10/19/2011 01:33:37
10 PUMP H2O DISPLACEMENT	10/19/2011 01:34:48	11 SLOW RATE	10/19/2011 01:50:13	12 BRING RATE UP	10/19/2011 01:59:56
13 SLOW RATE	10/19/2011 02:11:51	14 BUMP PLUG	10/19/2011 02:17:36	15 CHECK FLOATS	10/19/2011 02:22:49
16 PRESSURE UP CSG	10/19/2011 02:23:49	17 HOLD PRESSURE	10/19/2011 02:25:01	18 CHECK FLOATS	10/19/2011 02:58:43
19 SWAP LINES TO PARASITE	10/19/2011 03:00:49	20 PUMP SUGAR WATER	10/19/2011 03:11:01	21 SHUT DOWN	10/19/2011 03:19:53
22 END JOB	10/19/2011 03:22:50	23 START TOP OUT	10/19/2011 04:52:39	24 PRIME LINES	10/19/2011 04:53:29
25 PUMP TOPOUT	10/19/2011 04:54:17	26 SHUT DOWN /HESITATE	10/19/2011 04:59:26	27 PUMP TOP OUT	10/19/2011 05:04:16
28 SHUT DOWN	10/19/2011 05:08:50	29 END JOB	10/19/2011 05:09:31		

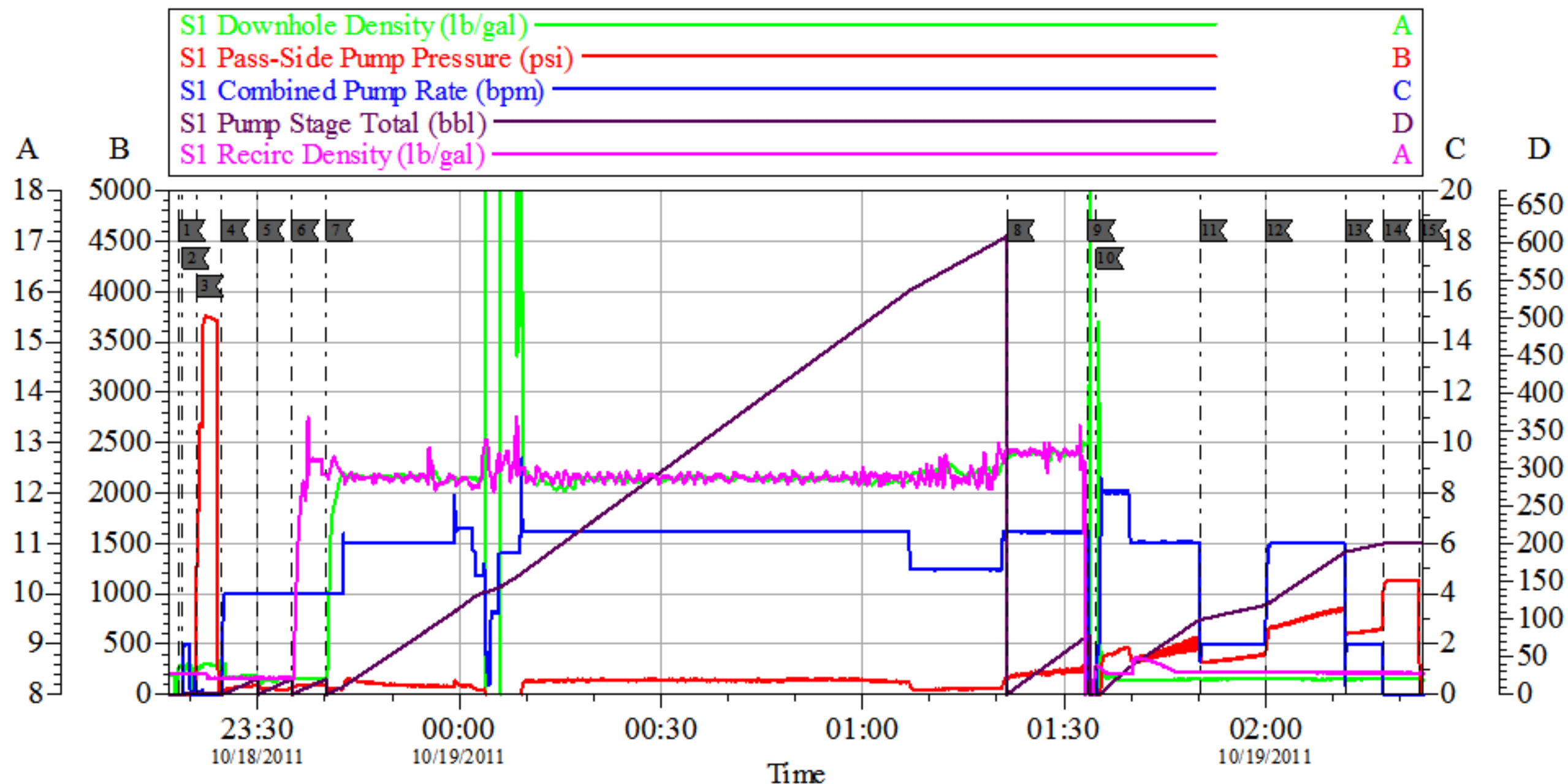
Customer: OXY
Well Description: CC 697-08-41A
Company Rep: DARRELL

Job Date: 18-Oct-2011
Job Type: SURFACE
Cement Supervisor: CRAIG KUKUS

Sales Order #: 8473966
ADC Used: YES
Elite #/Operator: E-7 JESSE SLAUGHTER

OptiCem v6.4.8
19-Oct-11 05:14

OXY SURFACE HP 330



Local Event Log

1 START JOB	10/18/2011 23:18:08	2 PRIME LINES	10/18/2011 23:18:47	3 PRESSURE TEST	10/18/2011 23:20:50
4 PUMP H2O SPACER	10/18/2011 23:24:35	5 PUMP GEL SPACER	10/18/2011 23:29:57	6 PUMP H2O SPACER	10/18/2011 23:35:06
7 PUMP LEAD CEMENT	10/18/2011 23:40:11	8 PUMP TAIL CEMENT	10/19/2011 01:21:35	9 SHUT DOWN/DROP PLUG	10/19/2011 01:33:37
10 PUMP H2O DISPLACEMENT	10/19/2011 01:34:48	11 SLOW RATE	10/19/2011 01:50:13	12 BRING RATE UP	10/19/2011 01:59:56
13 SLOW RATE	10/19/2011 02:11:51	14 BUMP PLUG	10/19/2011 02:17:36	15 CHECK FLOATS	10/19/2011 02:22:49

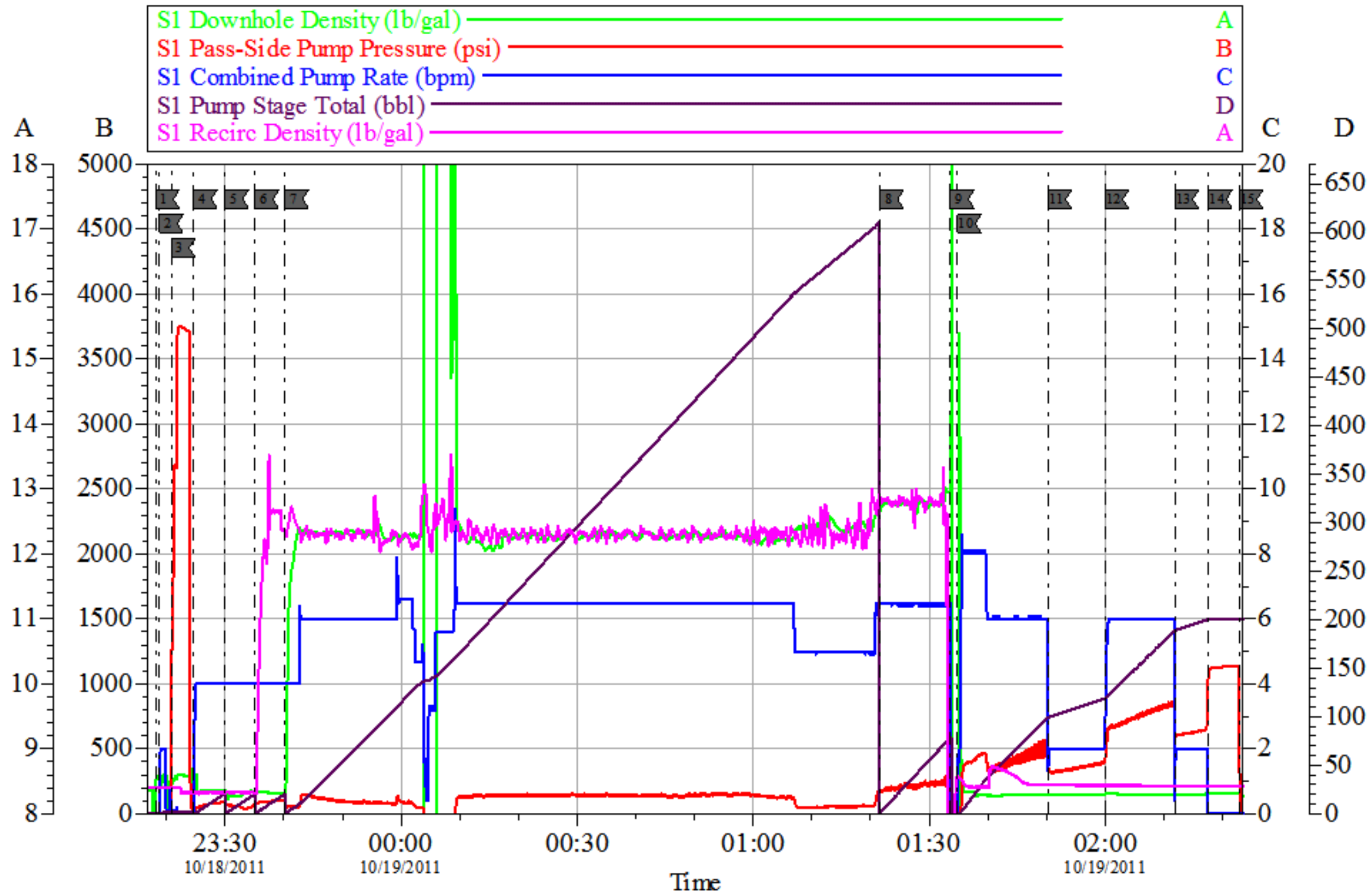
Customer: **OXY**
Well Description: **CC 697-08-41A**
Company Rep: **DARRELL**

Job Date: **18-Oct-2011**
Job Type: **SURFACE**
Cement Supervisor: **CRAIG KUKUS**

Sales Order #: **8473966**
ADC Used: **YES**
Elite #/Operator: **E-7 JESSE SLAUGHTER**

OptiCem v6.4.8
19-Oct-11 03:47

OXY SURFACE HP 330



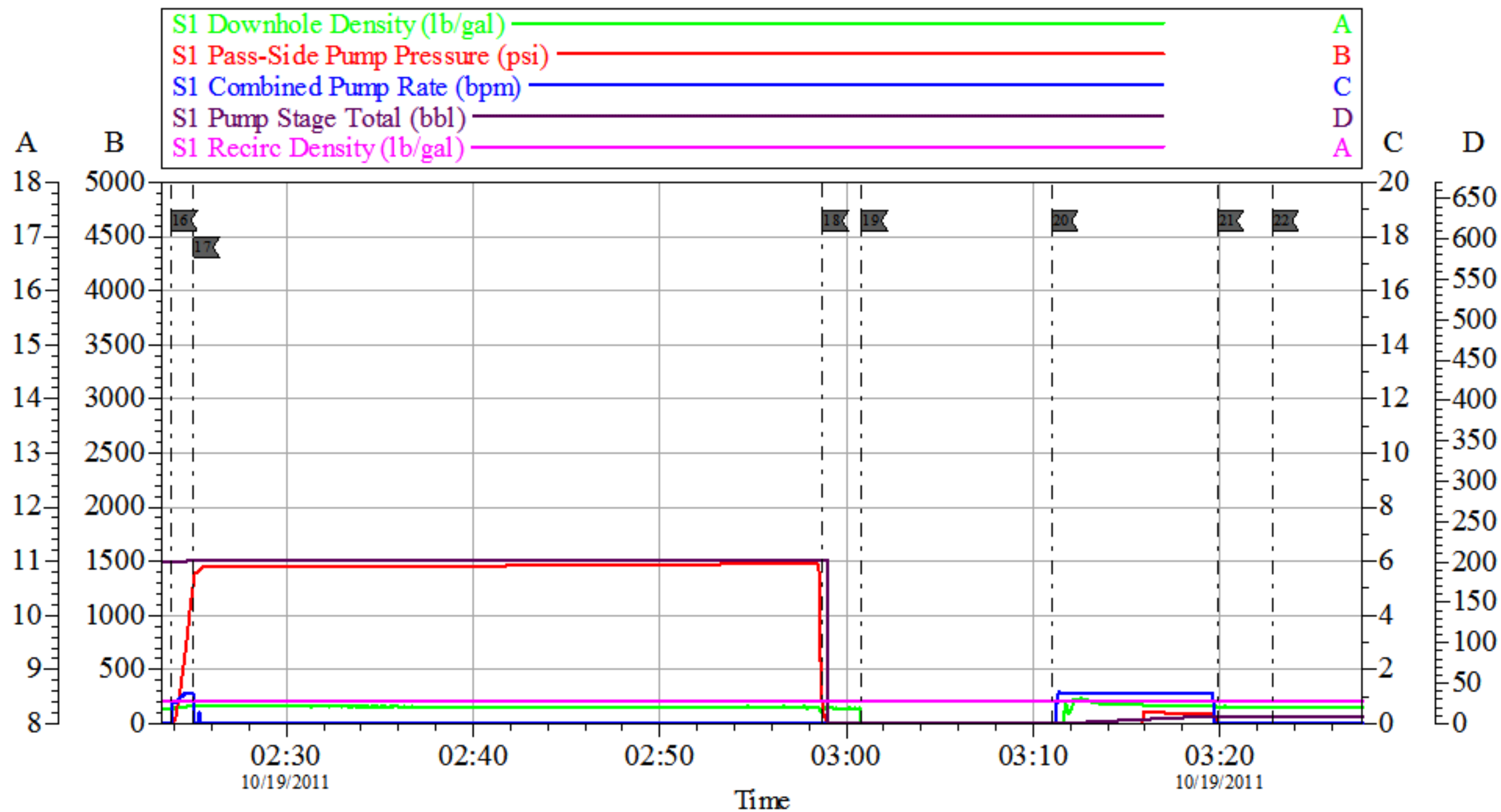
Customer: OXY
Well Description: CC 697-08-41A
Company Rep: DARRELL

Job Date: 18-Oct-2011
Job Type: SURFACE
Cement Supervisor: CRAIG KUKUS

Sales Order #: 8473966
ADC Used: YES
Elite #/Operator: E-7 JESSE SLAUGHTER

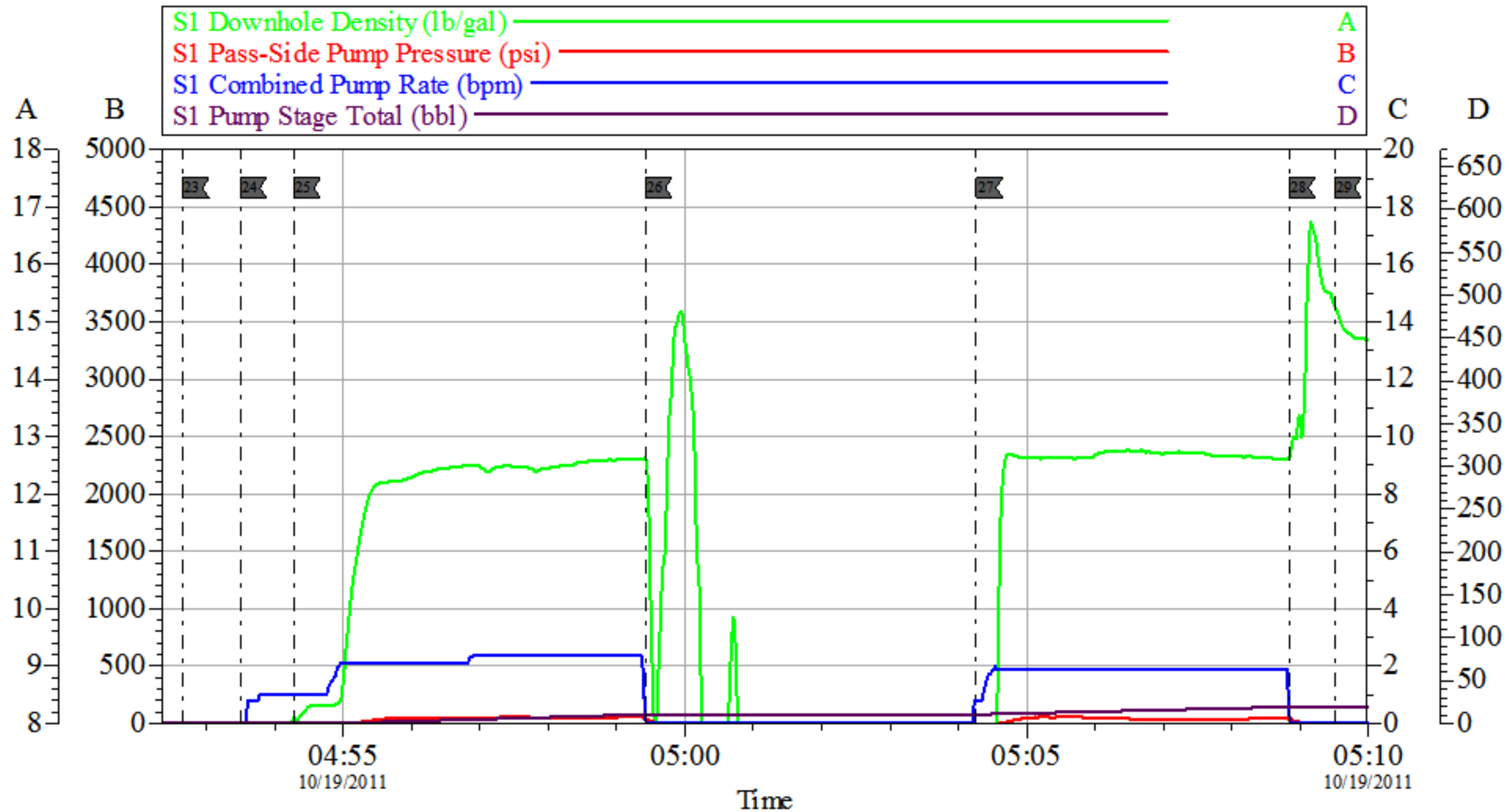
OptiCem v6.4.8
19-Oct-11 03:50

OXY SURFACE HP 330



OXY

TOP OUT #1 HP 330



Local Event Log

23	START TOP OUT	04:52:39	24	PRIME LINES	04:53:29	25	PUMP TOPOUT	04:54:17
26	SHUT DOWN /HESITATE	04:59:26	27	PUMP TOP OUT	05:04:16	28	SHUT DOWN	05:08:50
29	END JOB	05:09:31						

Customer: OXY
Well Description: CC 697-08-41A
Company Rep: DARRELL

Job Date: 18-Oct-2011
Job Type: SURFACE
Cement Supervisor: CRAIG KUKUS

Sales Order #: 8473966
ADC Used: YES
Elite #/Operator: E-7 JESSE SLAUGHTER

OptiCem v6.4.8
19-Oct-11 05:10

Sales Order #: 8473966	Line Item: 10	Survey Conducted Date: 10/19/2011
Customer: OXY GRAND JUNCTION EBUSINESS		Job Type (BOM): CMT SURFACE CASING BOM
Customer Representative: DARRYLE CLARK		API / UWI: (leave blank if unknown) 05-045-20065
Well Name: CC		Well Number: 697-08-41A
Well Type: Development Well	Well Country: United States of America	
H2S Present: No	Well State: Colorado	Well County: Garfield

Dear Customer,

We hope that you were satisfied with the service quality of this job performed by Halliburton. It is the aim of our management and service personnel to deliver equipment and service of a standard unmatched in the service sector of the energy industry.

Please take the time to let us know if our performance met with your satisfaction. Please be as critical as possible to ensure we constantly improve our service. Your comments are of great value to us and are intended for the exclusive use of Halliburton.

CUSTOMER SATISFACTION SURVEY

CATEGORY	CUSTOMER SATISFACTION RESPONSE	
Survey Conducted Date	The date the survey was conducted	10/19/2011
Survey Interviewer	The survey interviewer is the person who initiated the survey.	CRAIG KUKUS (HX19742)
Customer Participation	Did the customer participate in this survey? (Y/N)	Yes
Customer Representative	Enter the Customer representative name	DARRYLE CLARK
HSE	Was our HSE performance satisfactory? Circle Y or N	Yes
Equipment	Were you satisfied with our Equipment? Circle Y or N	Yes
Personnel	Were you satisfied with our people? Circle Y or N	Yes
Customer Comment	Customer's Comment	
Job DVA	Did we provide job DVA above our normal service today? Circle Y or N	No
Time	Please enter hours in decimal format to nearest quarter hour.	
Other	Enter short text for other efficiencies gained.	
Customer Initials	Customer's Initials	
Please provide details	Please describe how the job efficiencies were gained.	

CUSTOMER SIGNATURE

Sales Order #: 8473966	Line Item: 10	Survey Conducted Date: 10/19/2011
Customer: OXY GRAND JUNCTION EBUSINESS		Job Type (BOM): CMT SURFACE CASING BOM
Customer Representative: DARRYLE CLARK		API / UWI: (leave blank if unknown) 05-045-20065
Well Name: CC		Well Number: 697-08-41A
Well Type: Development Well	Well Country: United States of America	
H2S Present: No	Well State: Colorado	Well County: Garfield

KEY PERFORMANCE INDICATORS

General	
Survey Conducted Date The date the survey was conducted	10/19/2011

Cementing KPI Survey	
Type of Job Select the type of job. (Cementing or Non-Cementing)	0
Select the Maximum Deviation range for this Job What is the highest deviation for the job you just completed? This may not be the maximum well deviation.	Vertical
Total Operating Time (hours) Total Operating Hours Including Rig-up, Pumping, Rig-down. Enter in decimal format.	10
HSE Incident, Accident, Injury HSE Incident, Accident, Injury. This should be recordable incidents only.	No
Was the job purpose achieved? Was the job delivered correctly as per customer agreed design?	Yes
Operating Hours (Pumping Hours) Total number of hours pumping fluid on this job. Enter in decimal format.	8
Customer Non-Productive Rig Time (hrs) Lost time due to Halliburton in the start, execution, or completion of an ordered service or product, or delays in a follow-on service. Enter in decimal format. 0 if none.	0
Type of Rig Classification Job Was Performed Type Of Rig (classification) Job Was Performed On	Drilling Rig (Portable)
Number Of JSAs Performed Number Of Jsas Performed	6
Number of Unplanned Shutdowns Unplanned shutdown is when injection stops for any period of time.	0
Was this a Primary Cement Job (Yes / No)	Yes

Sales Order #: 8473966	Line Item: 10	Survey Conducted Date: 10/19/2011
Customer: OXY GRAND JUNCTION EBUSINESS		Job Type (BOM): CMT SURFACE CASING BOM
Customer Representative: DARRYLE CLARK		API / UWI: (leave blank if unknown) 05-045-20065
Well Name: CC		Well Number: 697-08-41A
Well Type: Development Well	Well Country: United States of America	
H2S Present: No	Well State: Colorado	Well County: Garfield

Primary Cement Job= Casing job, Liner job, or Tie-back job.	
Did We Run Wiper Plugs? Did We Run Top And Bottom Casing Wiper Plugs?	Top
Mixing Density of Job Stayed in Designed Density Range (0-100%) Density Range defined as +/- .20 ppg. Calculation: Total BBLs cement mixed at designed density divided by total BBLs of cement multiplied by 100	98
Was Automated Density Control Used? Was Automated Density Control (ADC) Used ?	Yes
Pump Rate (percent) of Job Stayed At Designed Pump Rate Pump Rate range defined as +/- 1bbl/min. Calculation: Total BBLs of fluid pumped at the designed rate divided by Total BBLs of fluid pumped, multiplied by 100	98
Nbr of Remedial Sqz Jobs Rqd - Competition Number Of Remedial Squeeze Jobs Required After Primary Job Performed By Competition	0
Nbr of Remedial Plug Jobs Rqd - HES Number Of Remedial Plug Jobs Needed After Primary Plug Pumped By HES	0
Nbr of Remedial Sqz Jobs Rqd - HES Number Of Remedial Squeeze Jobs Required After Primary Job Performed By HES	0