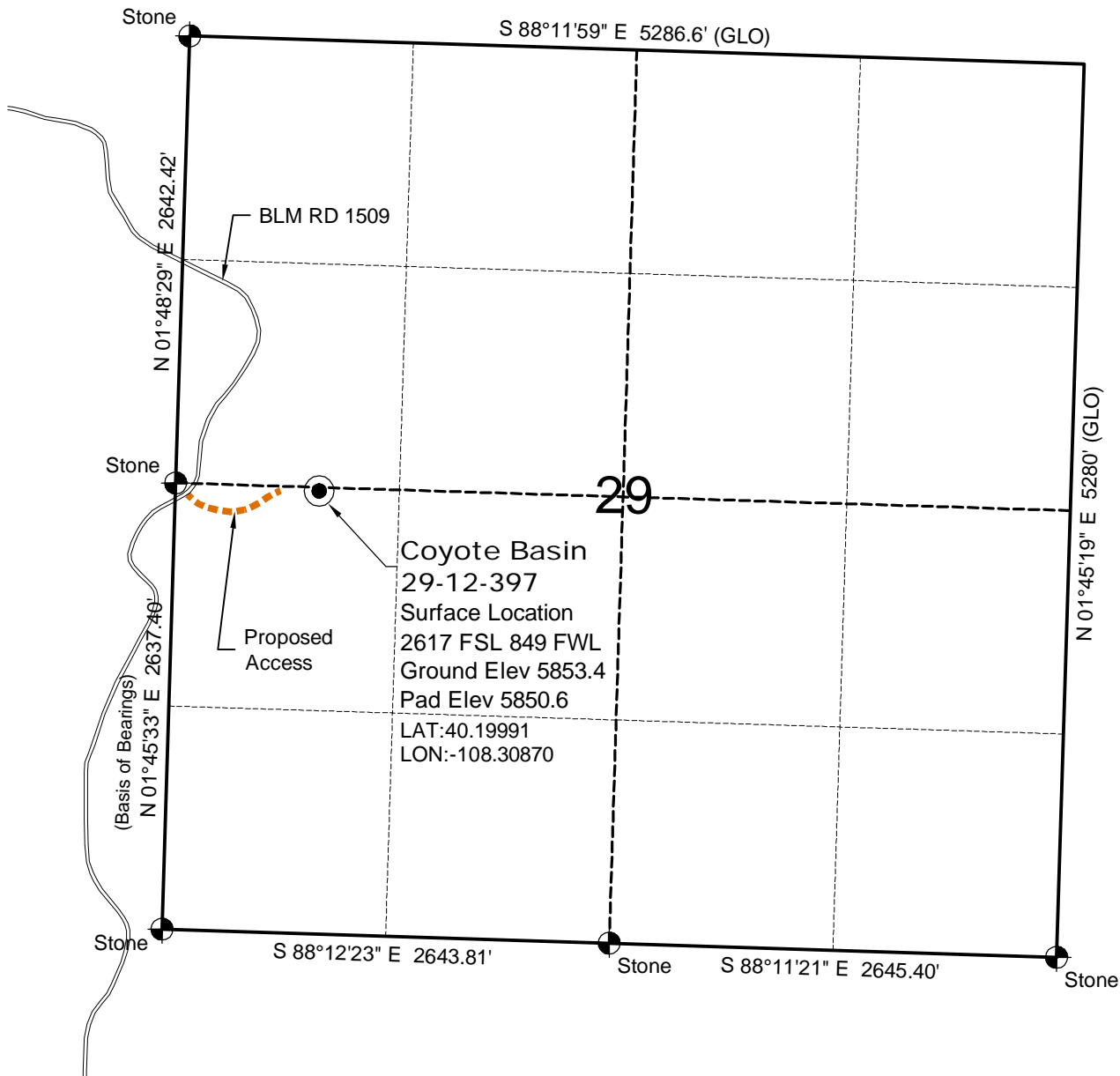


WELL LOCATION MAP

COYOTE BASIN
29-12-397 PAD

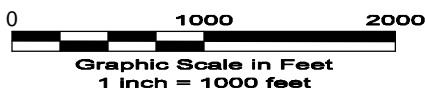
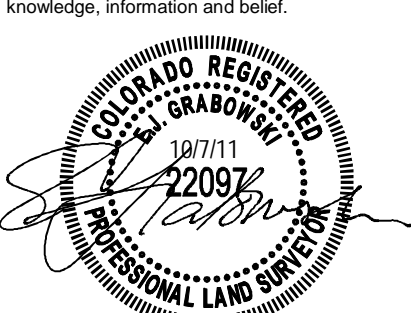


SURVEYOR'S STATEMENT

The undersigned hereby states that the well location shown hereon was staked on the ground based on existing monumentation and/or physical evidence found in the field and is correct to the best of my knowledge, information and belief.

NOTES

- 1.) Horizontal and vertical datum, based on an OPUS solution.
 - 2.) All directions, distances, and dimensions shown hereon are based on coordinates from the "Colorado coordinate system of 1983 north zone" (article 52 of title 38, C.R.S.).
 - 3.) All section line dimensions shown hereon are based on field measurements of existing monuments and/or physical evidence found in the field unless otherwise indicated. Refer to land survey plats deposited in Rio Blanco County & BLM Survey.
 - 4.) Physical features shown hereon are for graphical representation only.
 - 5.) See Form 2A for visible improvements within 400' of wellhead.
 - 6.) Distances to nearest section lines are measured perpendicularly.
 - 7.) This is not a land survey nor land survey plat.
 - 8.) Date of Survey 9/8/11 Date of Drawing 10/7/11. REV 1
- PDOP Reading: 1.8 Instrument Operator: E.J.G.



GEO SURV

LAND SURVEYING AND MAPPING
LAFAYETTE - WINTER PARK
Ph 303 666 0379 Fx 303 665 6320

MESA ENERGY PARTNERS, LLC
COYOTE BASIN 29-12-397

NW1/4 SW1/4 SEC. 29 T3N R97W
6th PM RIO BLANCO COUNTY COLORADO

10/20/11