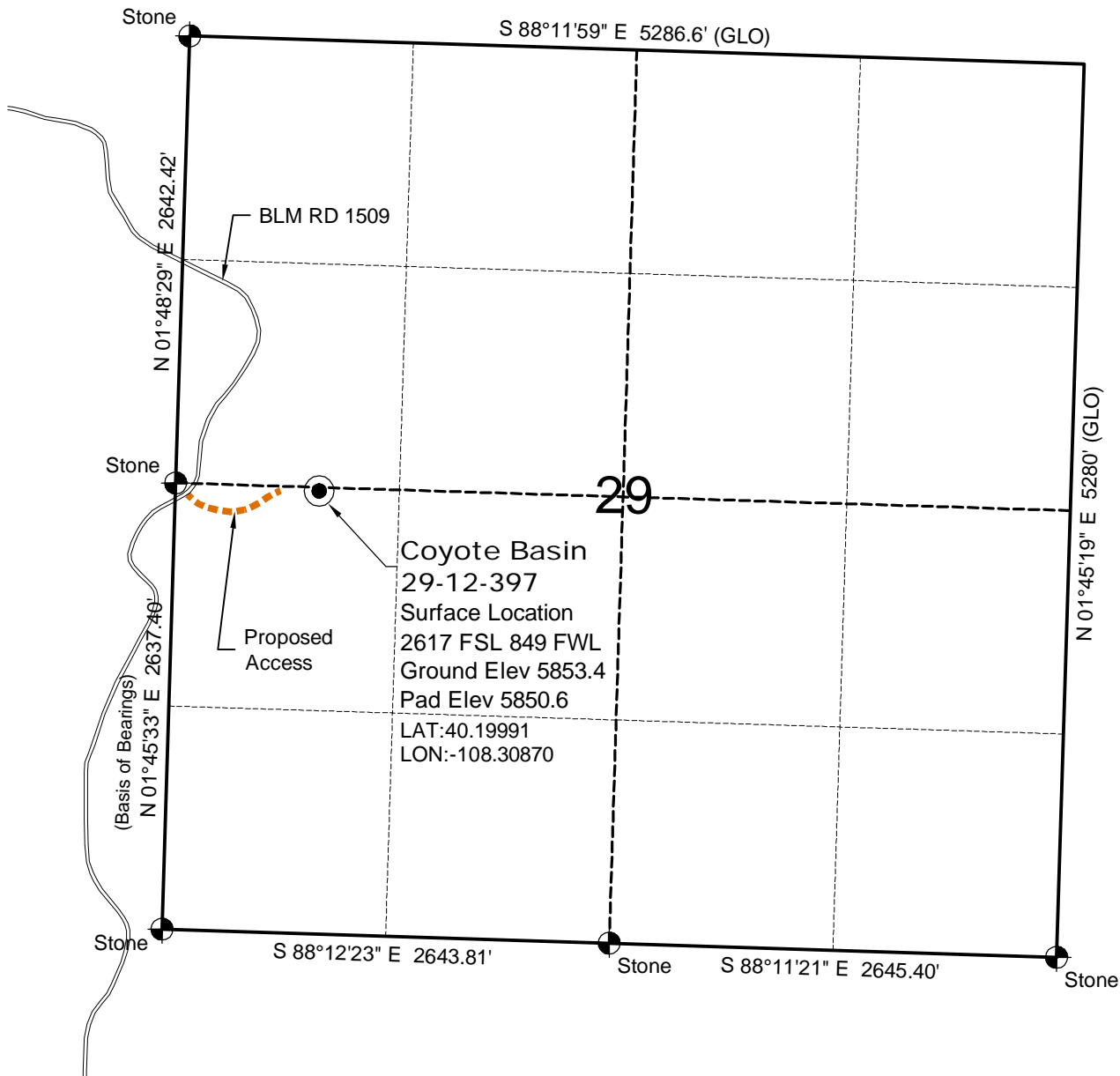


WELL LOCATION MAP

**COYOTE BASIN
29-12-397 PAD**

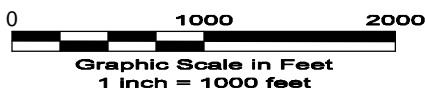
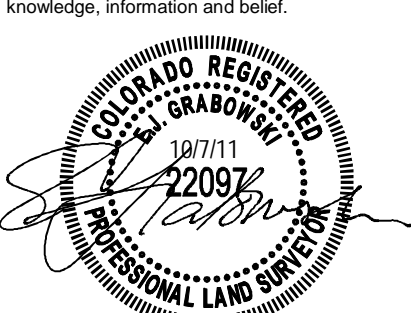


SURVEYOR'S STATEMENT

The undersigned hereby states that the well location shown hereon was staked on the ground based on existing monumentation and/or physical evidence found in the field and is correct to the best of my knowledge, information and belief.

NOTES

- 1.) Horizontal and vertical datum, based on an OPUS solution.
 - 2.) All directions, distances, and dimensions shown hereon are based on coordinates from the "Colorado coordinate system of 1983 north zone" (article 52 of title 38, C.R.S.).
 - 3.) All section line dimensions shown hereon are based on field measurements of existing monuments and/or physical evidence found in the field unless otherwise indicated. Refer to land survey plats deposited in Rio Blanco County & BLM Survey.
 - 4.) Physical features shown hereon are for graphical representation only.
 - 5.) See Form 2A for visible improvements within 400' of wellhead.
 - 6.) Distances to nearest section lines are measured perpendicularly.
 - 7.) This is not a land survey nor land survey plat.
 - 8.) Date of Survey 9/8/11 Date of Drawing 10/7/11. REV 1
- PDOP Reading: 1.8 Instrument Operator: E.J.G



GEO SURV

LAND SURVEYING AND MAPPING
LAFAYETTE - WINTER PARK
Ph 303 666 0379 Fx 303 665 6320

**MESA ENERGY PARTNERS, LLC
COYOTE BASIN 29-12-397**

**NW1/4 SW1/4 SEC. 29 T3N R97W
6th PM RIO BLANCO COUNTY COLORADO**

1 OF 12 10/20/11

PAD LAYOUT

COYOTE BASIN
29-12-397 PAD

PAD 300'X430' ELEV=5850.6'

DISTURBED AREA=5.2± ACRES

ESTIMATED DIRT QUANTITIES

CUTx10%	FILL	PIT	TOPSOIL	EXCESS
15,930	13,150	3,390	2,750	30

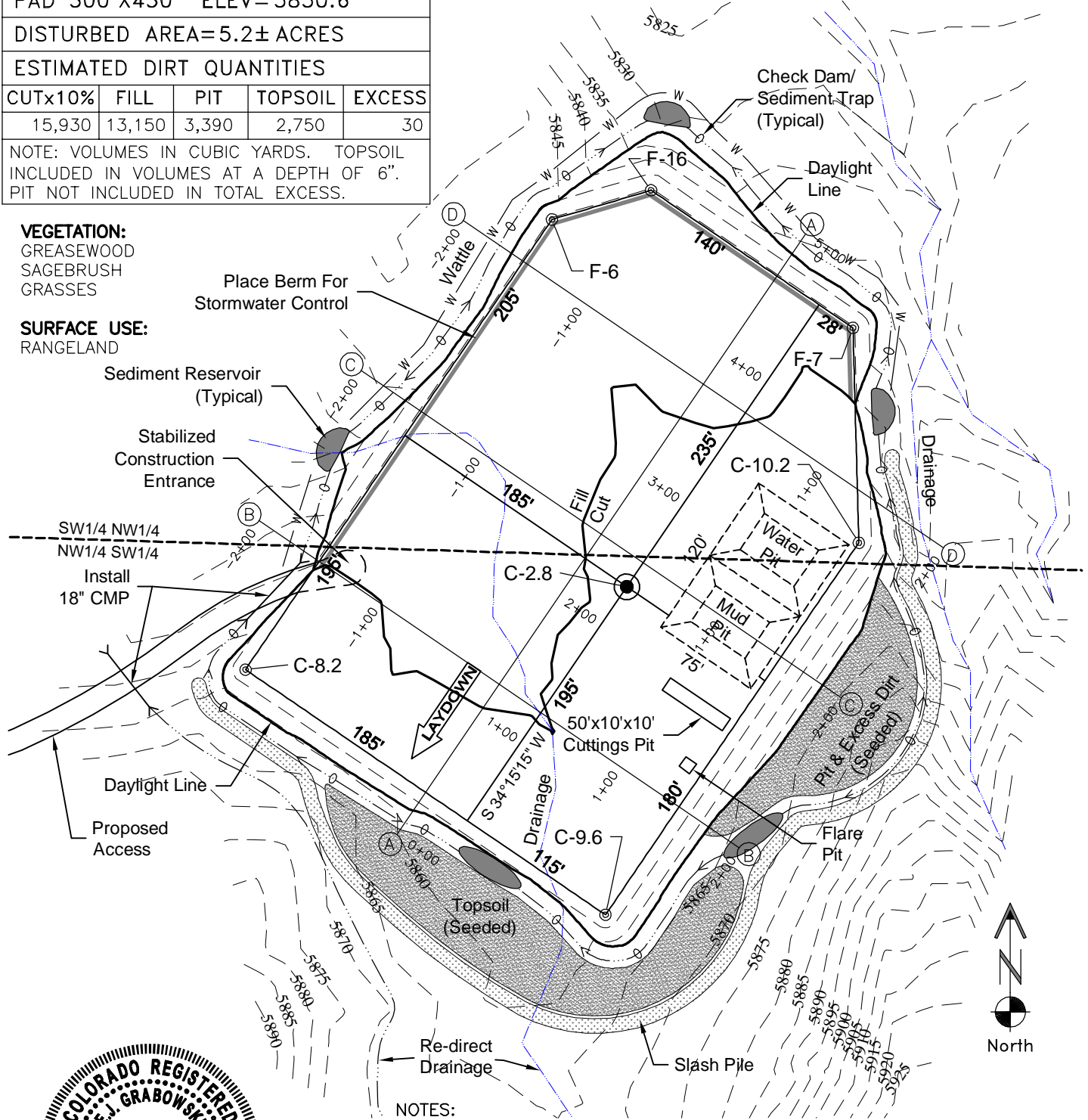
NOTE: VOLUMES IN CUBIC YARDS. TOPSOIL INCLUDED IN VOLUMES AT A DEPTH OF 6". PIT NOT INCLUDED IN TOTAL EXCESS.

VEGETATION:

GREASEWOOD
SAGEBRUSH
GRASSES

SURFACE USE:

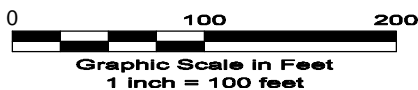
RANGELAND



NOTES:

- 1) 10% allowance is made for soil expansion.
- 2) MUD SYSTEM: A closed-loop mud system will be utilized provided it can be operated in a safe, efficient manner in a potentially high-pressure drilling environment and winter weather conditions, if applicable.

2 OF 12 10/20/11



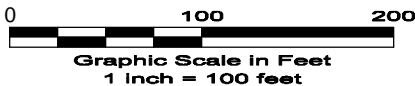
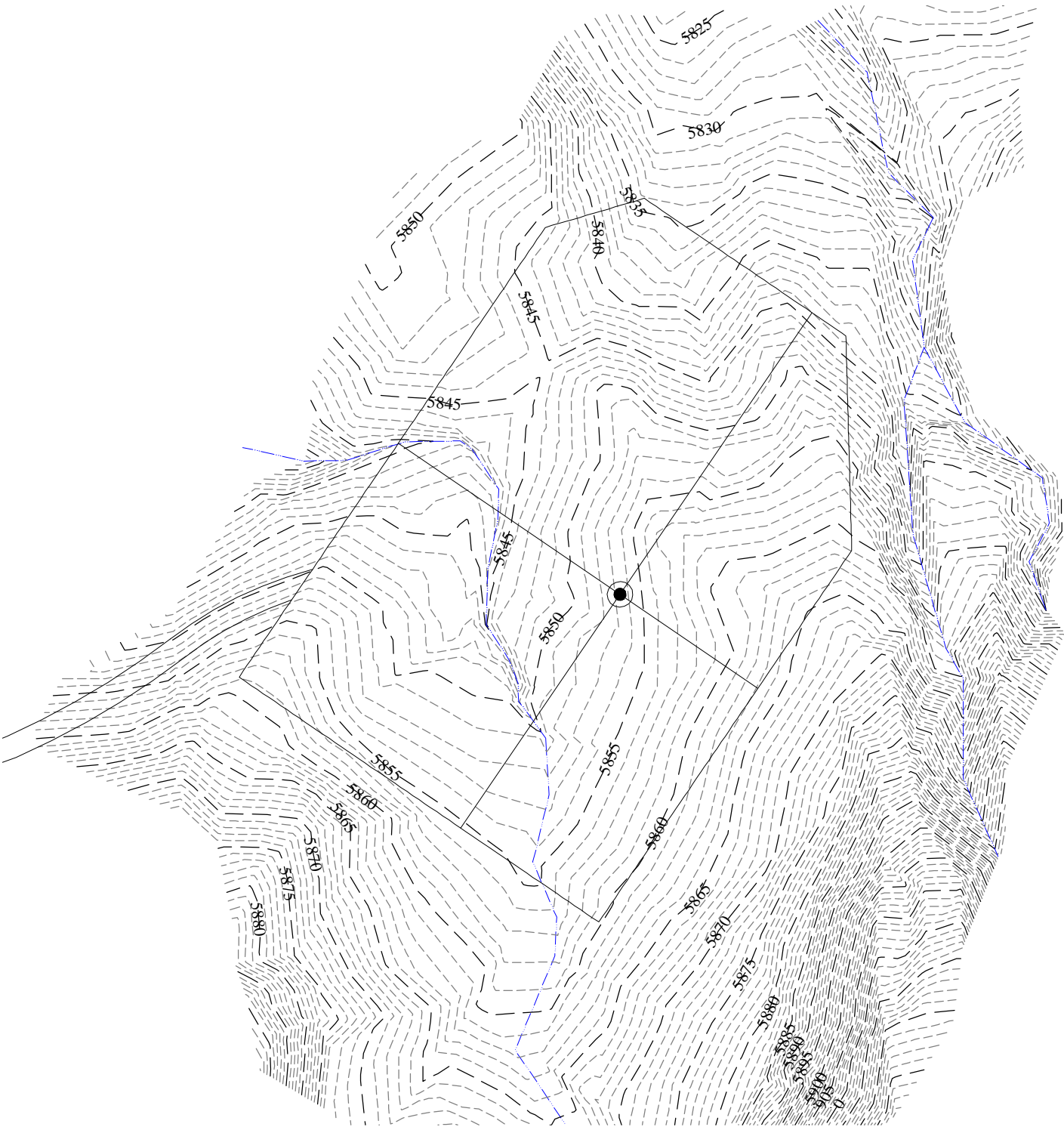
LAND SURVEYING AND MAPPING
LAFAYETTE - WINTER PARK
Ph 303 666 0379 Fx 303 665 6320

MESA ENERGY PARTNERS, LLC
COYOTE BASIN 29-12-397

NW1/4 SW1/4 SEC. 29 T3N R97W
6th PM RIO BLANCO COUNTY COLORADO

EXISTING CONTOURS

COYOTE BASIN
29-12-397 PAD



3 OF 12 10/20/11

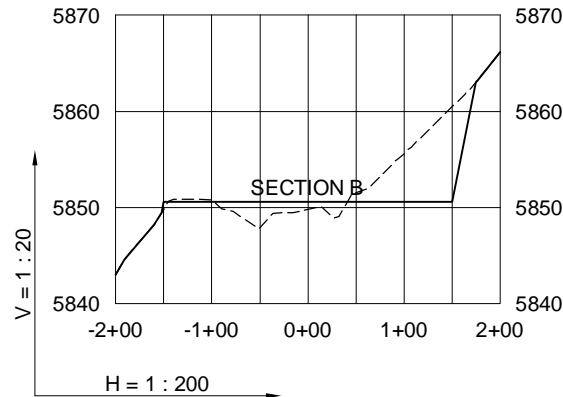
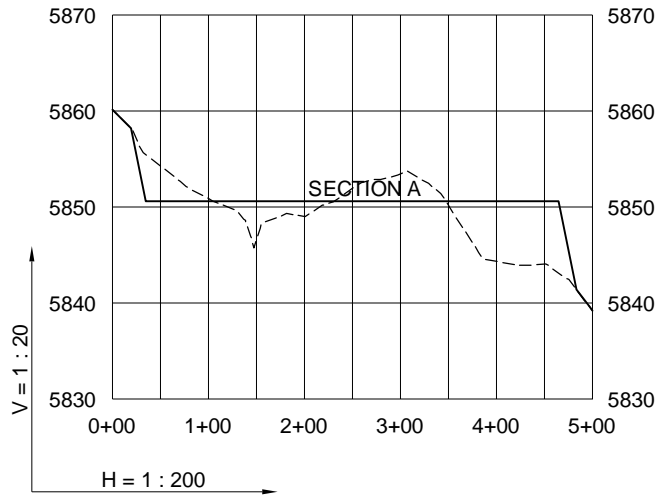

LAND SURVEYING AND MAPPING
LAFAYETTE - WINTER PARK
Ph 303 666 0379 Fx 303 665 6320

MESA ENERGY PARTNERS, LLC
COYOTE BASIN 29-12-397

NW1/4 SW1/4 SEC. 29 T3N R97W
6th PM RIO BLANCO COUNTY COLORADO

CROSS SECTIONS A & B

COYOTE BASIN
29-12-397 PAD



4 OF 12 10/20/11

----- Existing Ground
----- Proposed Grade

GEO SURV

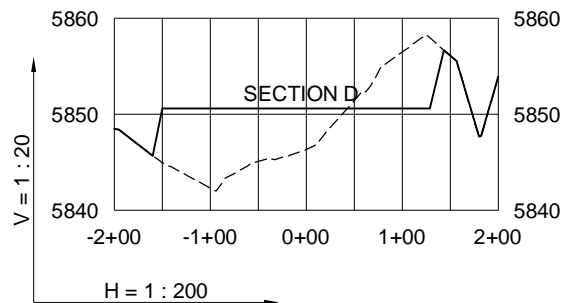
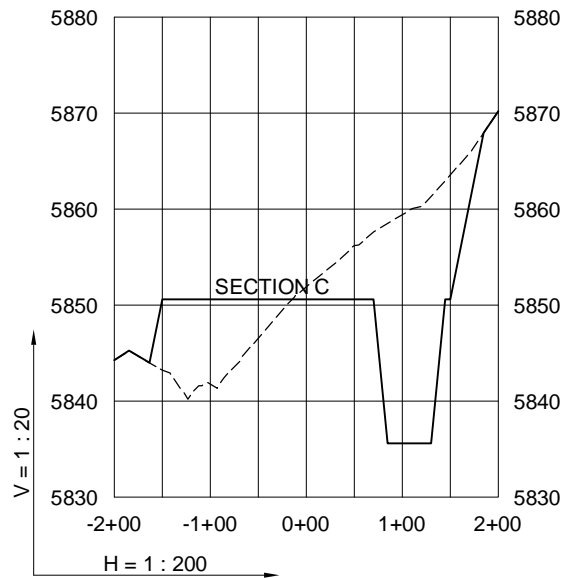
LAND SURVEYING AND MAPPING
LAFAYETTE - WINTER PARK
Ph 303 666 0379 Fx 303 665 6320

MESA ENERGY PARTNERS, LLC
COYOTE BASIN 29-12-397

NW1/4 SW1/4 SEC. 29 T3N R97W
6th PM RIO BLANCO COUNTY COLORADO

CROSS SECTIONS C & D

COYOTE BASIN
29-12-397 PAD



5 OF 12 10/20/11

----- Existing Ground
————— Proposed Grade

GEO SURV

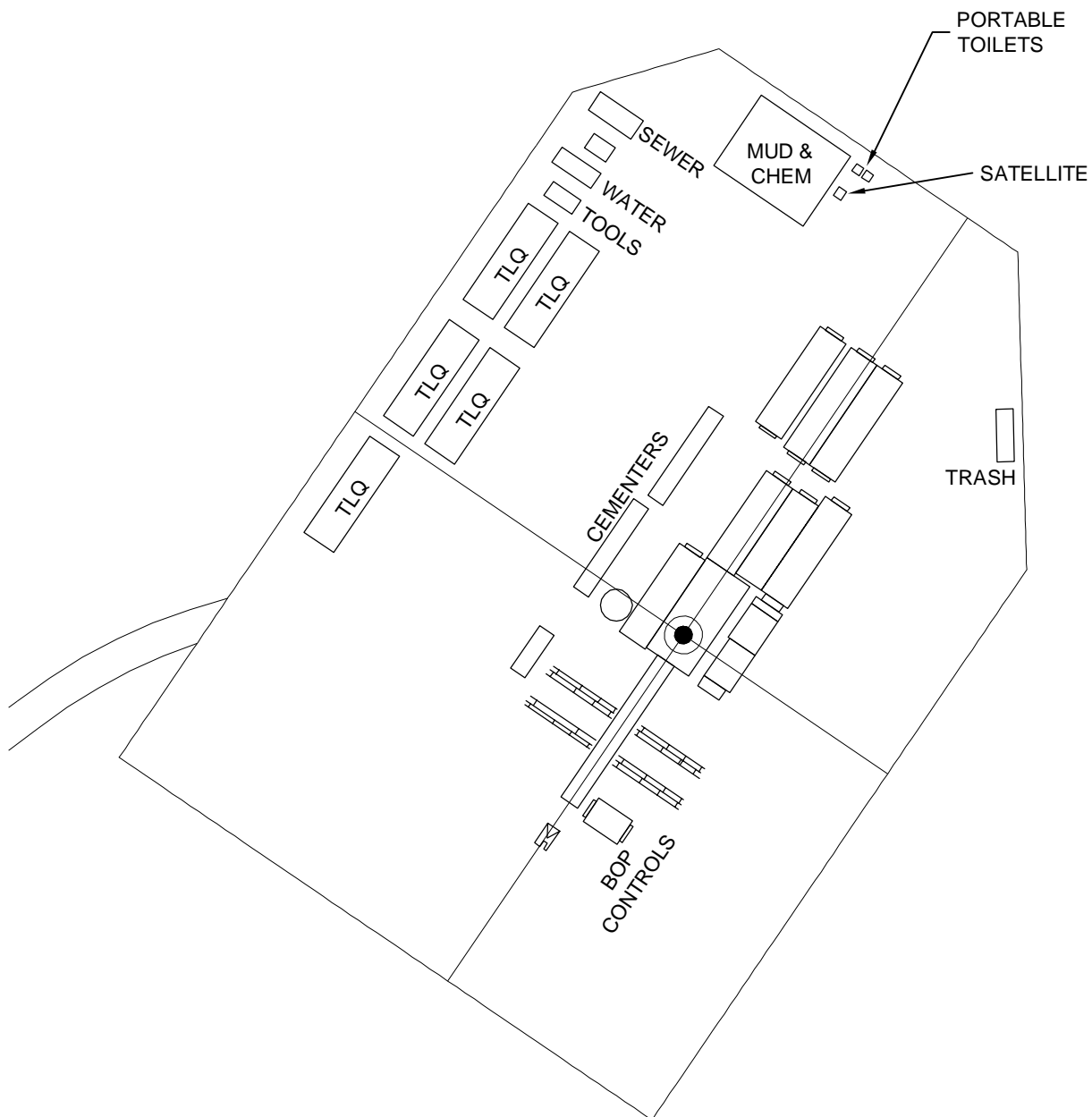
LAND SURVEYING AND MAPPING
LAFAYETTE - WINTER PARK
Ph 303 666 0379 Fx 303 665 6320

MESA ENERGY PARTNERS, LLC
COYOTE BASIN 29-12-397

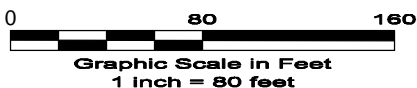
NW1/4 SW1/4 SEC. 29 T3N R97W
6th PM RIO BLANCO COUNTY COLORADO

TYPICAL RIG LAYOUT

COYOTE BASIN
29-12-397 PAD



North



6 OF 12 10/20/11



GEO SURV

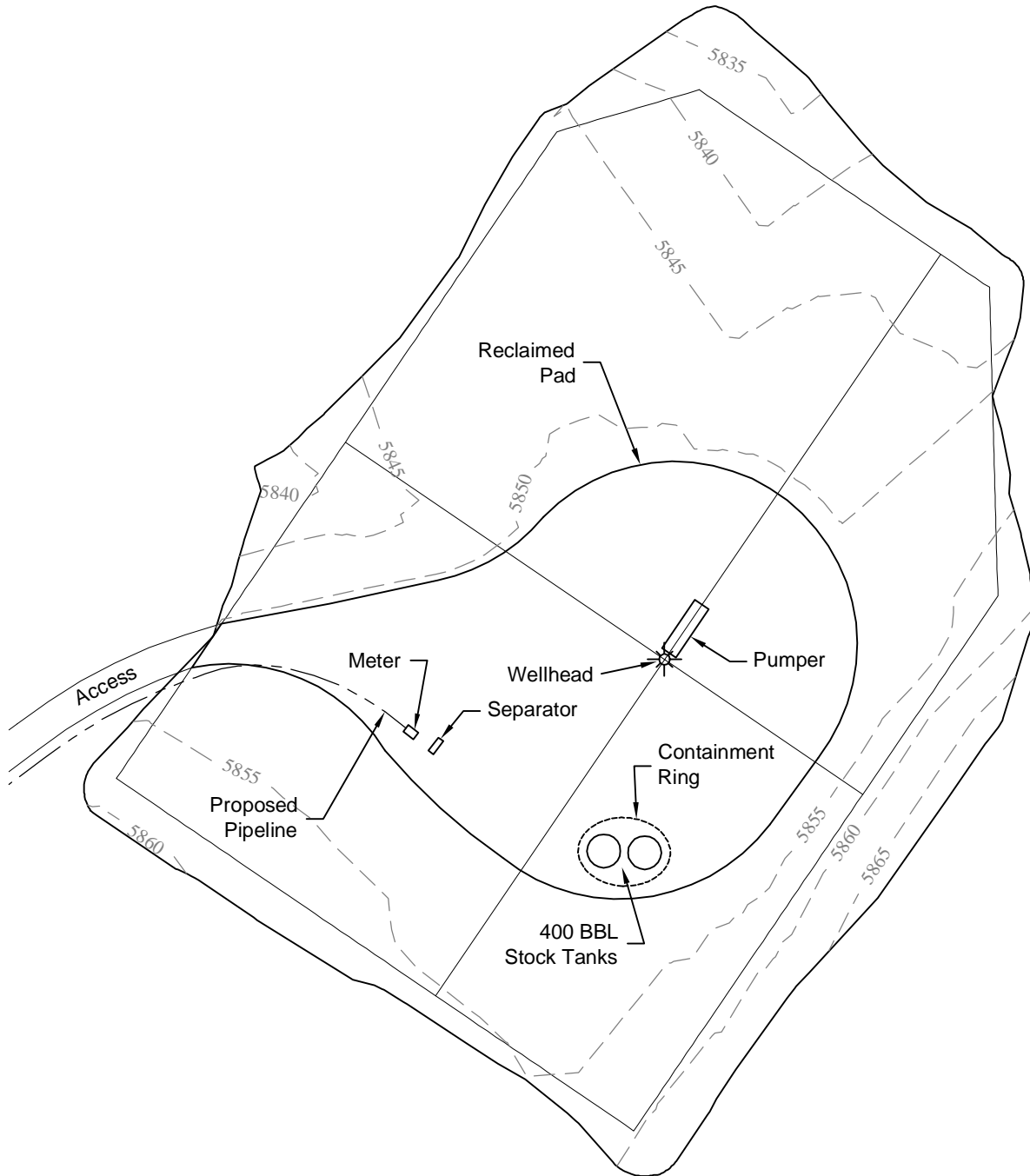
LAND SURVEYING AND MAPPING
LAFAYETTE - WINTER PARK
Ph 303 666 0379 Fx 303 665 6320

MESA ENERGY PARTNERS, LLC
COYOTE BASIN 29-12-397

NW1/4 SW1/4 SEC. 29 T3N R97W
6th PM RIO BLANCO COUNTY COLORADO

PRODUCTION SCHEMATIC

COYOTE BASIN
29-12-397 PAD



North

0 80 160

Graphic Scale in Feet
1 inch = 80 feet

DISTURBANCE ACREAGE:
5.2± DRILLING OPERATIONS
1.0± INTERIM RECLAIM

7 OF 12 10/20/11



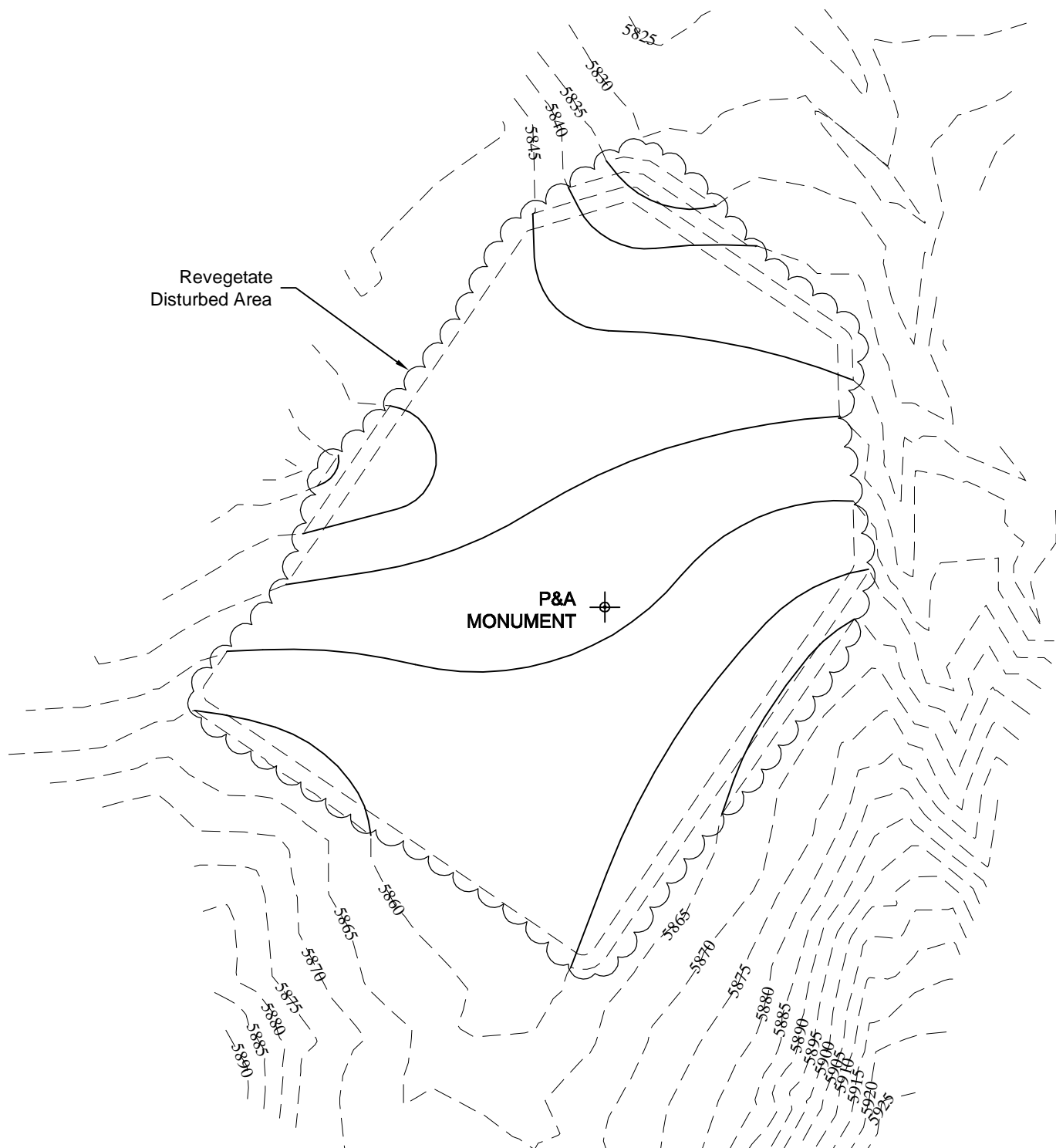
LAND SURVEYING AND MAPPING
LAFAYETTE - WINTER PARK
Ph 303 666 0379 Fx 303 665 6320

MESA ENERGY PARTNERS, LLC
COYOTE BASIN 29-12-397

NW1/4 SW1/4 SEC. 29 T3N R97W
6th PM RIO BLANCO COUNTY COLORADO

FINAL ABANDONMENT

COYOTE BASIN
29-12-397 PAD



North

0 100 200

Graphic Scale in Feet
1 inch = 100 feet



LAND SURVEYING AND MAPPING
LAFAYETTE - WINTER PARK
Ph 303 666 0379 Fx 303 665 6320

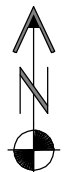
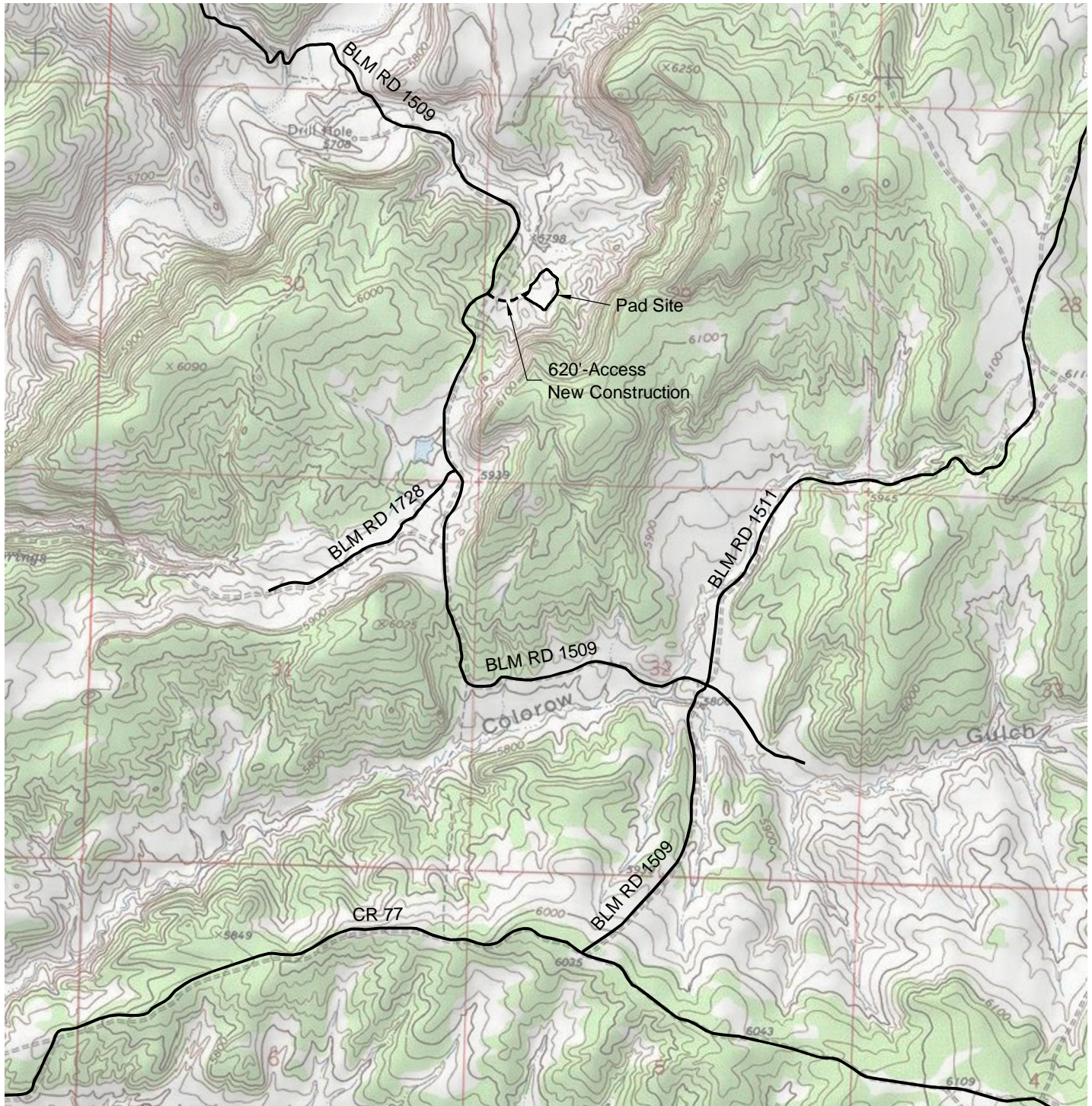
MESA ENERGY PARTNERS, LLC
COYOTE BASIN 29-12-397

NW1/4 SW1/4 SEC. 29 T3N R97W
6th PM RIO BLANCO COUNTY COLORADO

8 OF 12 10/20/11

ACCESS ROAD MAP

COYOTE BASIN
29-12-397 PAD



North



Graphic Scale in Feet
1 inch = 2000 feet



LAND SURVEYING AND MAPPING
LAFAYETTE - WINTER PARK
Ph 303 666 0379 Fx 303 665 6320

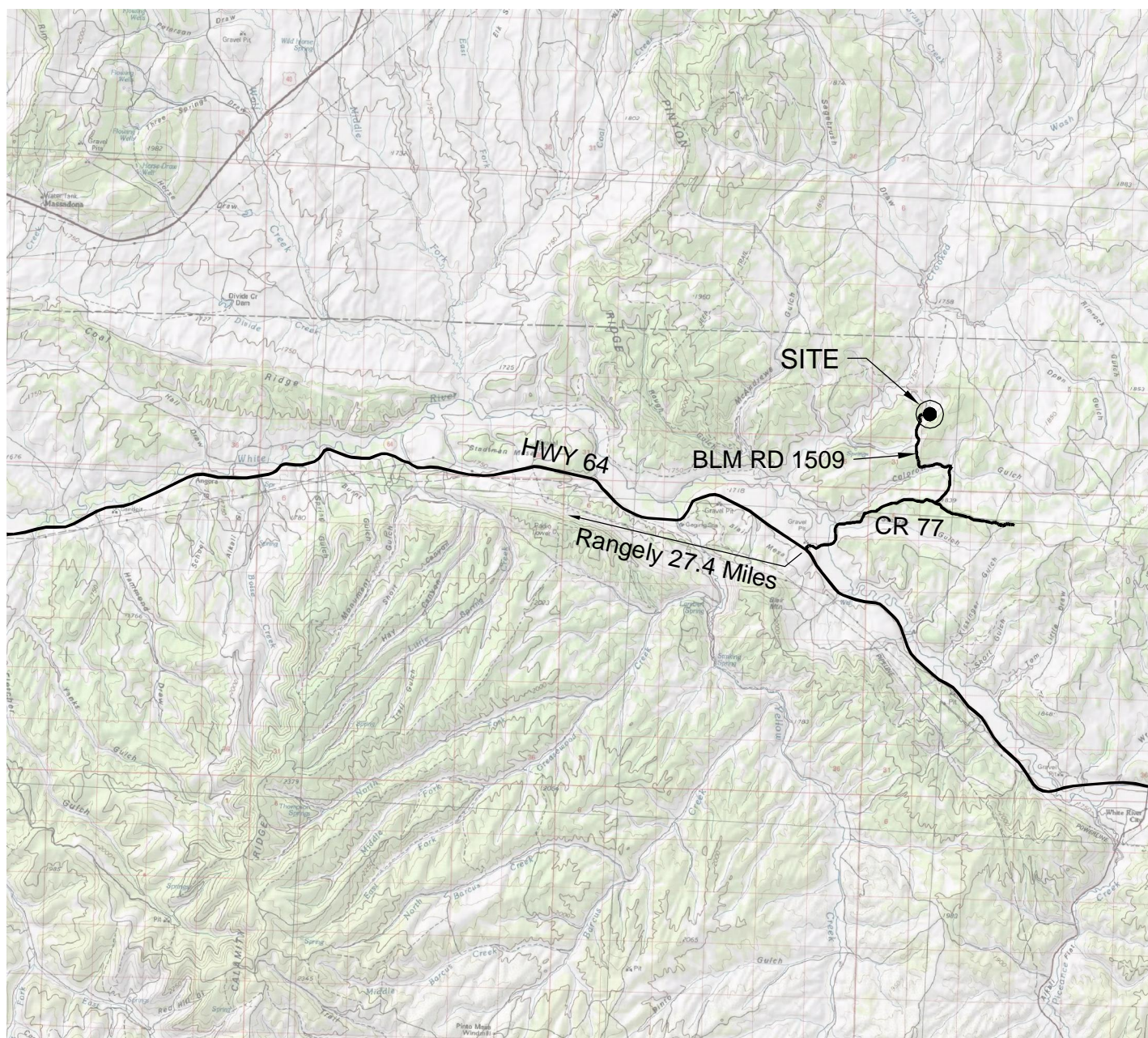
MESA ENERGY PARTNERS, LLC
COYOTE BASIN 29-12-397

NW1/4 SW1/4 SEC. 29 T3N R97W
6th PM RIO BLANCO COUNTY COLORADO

9 OF 12 10/20/11

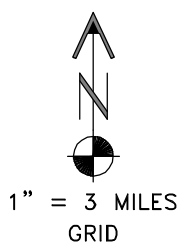
VICINITY MAP

**COYOTE BASIN
29-12-397 PAD**



DRIVING DIRECTIONS:

- MP 0.0 - Intersection of Highway 64 & Highway 139; East on Highway 64
- MP 27.4 - Left on CR 77 at Mile Post 47.3 on Hwy 64
- MP 30.6 - Left on BLM RD 1509
- MP 30.4 - Left on BLM RD 1509 at Intersection of BLM RD 1509 & 1511
- MP 31.8 - Bear right on BLM RD 1509 at Intersection of BLM RD 1509 & 1728
- MP 32.5 - Right on access to Coyote Basin 29-12-397 Pad
- MP 32.6 - Coyote Basin 29-12-397 Pad



10 OF 12 10/20/11



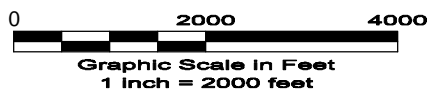
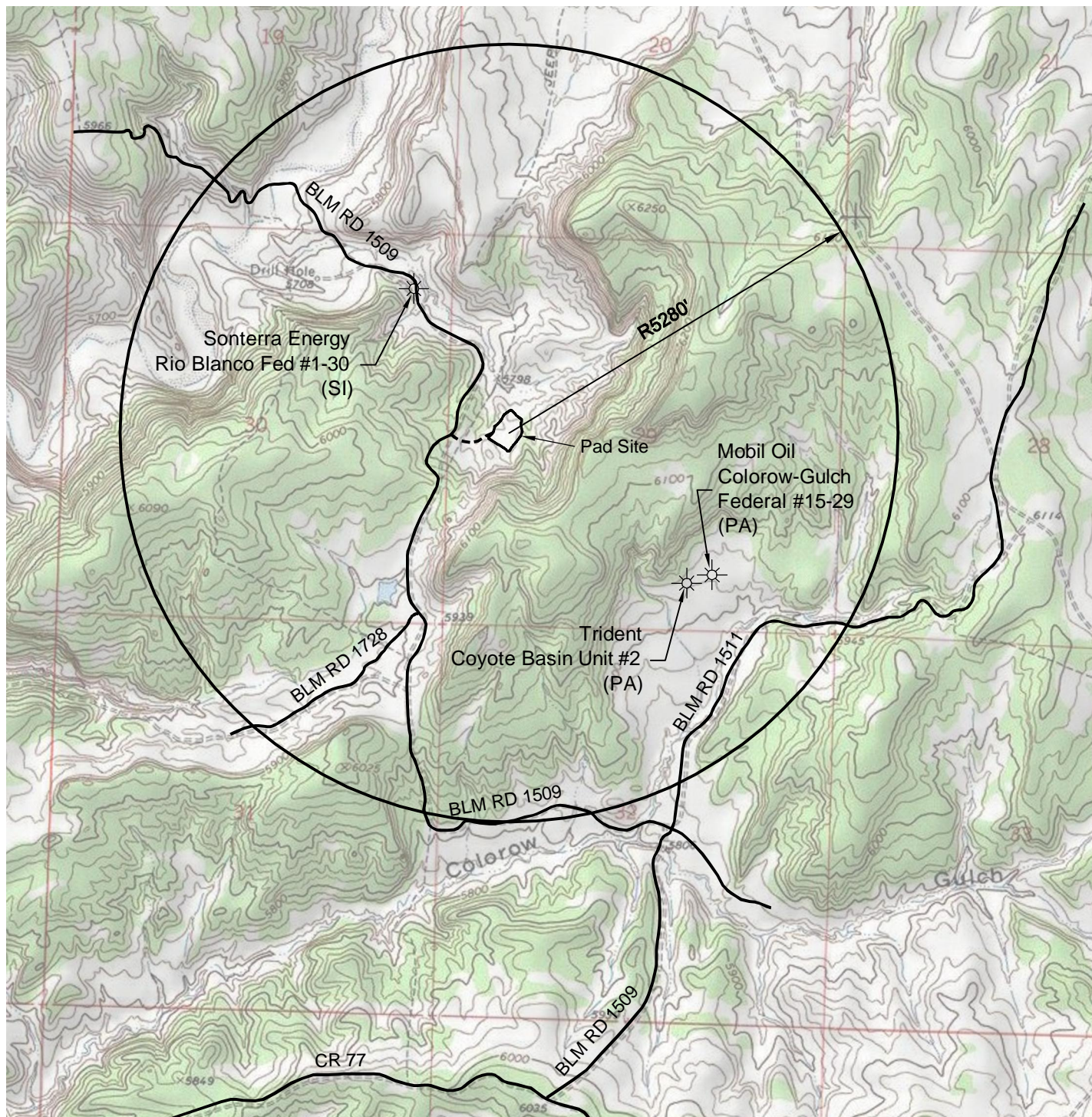
**LAND SURVEYING AND MAPPING
LAFAYETTE - WINTER PARK
Ph 303 666 0379 Fx 303 665 6320**

**MESA ENERGY PARTNERS, LLC
COYOTE BASIN 29-12-397**

**NW1/4 SW1/4 SEC. 29 T3N R97W
6th PM RIO BLANCO COUNTY COLORADO**

WELL VICINITY MAP

COYOTE BASIN
29-12-397 PAD



LAND SURVEYING AND MAPPING
LAFAYETTE - WINTER PARK
Ph 303 666 0379 Fx 303 665 6320

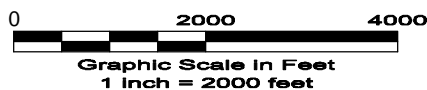
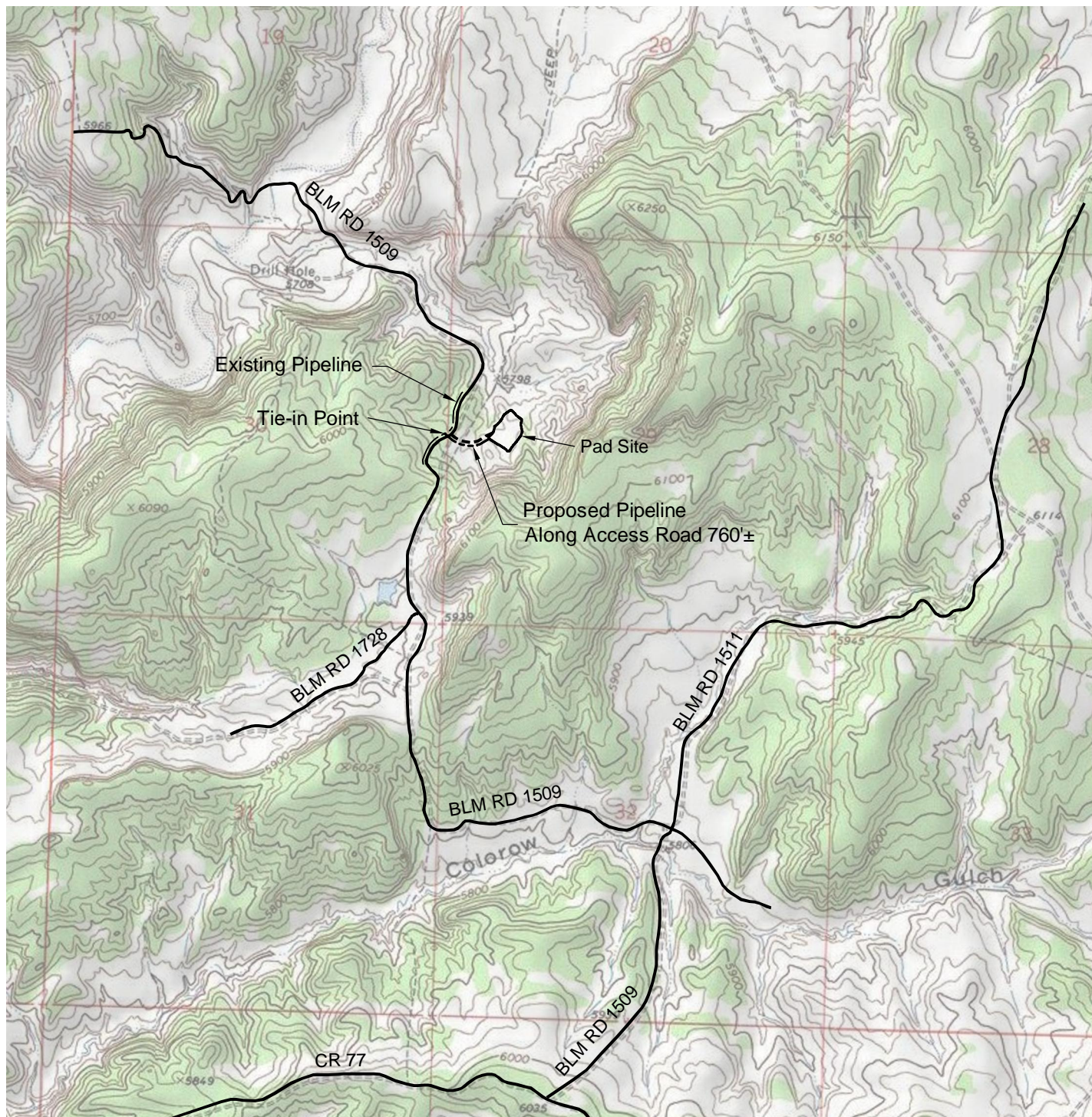
MESA ENERGY PARTNERS, LLC
COYOTE BASIN 29-12-397

NW1/4 SW1/4 SEC. 29 T3N R97W
6th PM RIO BLANCO COUNTY COLORADO

11 OF 12 10/20/11

PROPOSED PIPELINE MAP

COYOTE BASIN
29-12-397 PAD



LAND SURVEYING AND MAPPING
LAFAYETTE - WINTER PARK
Ph 303 666 0379 Fx 303 665 6320

MESA ENERGY PARTNERS, LLC
COYOTE BASIN 29-12-397

NW1/4 SW1/4 SEC. 29 T3N R97W
6th PM RIO BLANCO COUNTY COLORADO

12 OF 12 10/20/11