
OXY GRAND JUNCTION EBUSINESS

**CC 697-08-58B
Parachute
Garfield County , Colorado**

**Cement Surface Casing
08-Sep-2011**

Post Job Summary

The Road to Excellence Starts with Safety

Sold To #: 344034	Ship To #: 2877281	Quote #:	Sales Order #: 8444747
Customer: OXY GRAND JUNCTION EBUSINESS	Customer Rep: Benevides, Victor		
Well Name: CC	Well #: 697-08-58B	API/UWI #: 05-045-20078	
Field: Parachute	City (SAP): Parachute	County/Parish: Garfield	State: Colorado
Lat: N 39.534 deg. OR N 39 deg. 32 min. 1.982 secs.	Long: W 108.242 deg. OR W -109 deg. 45 min. 29.246 secs.		
Contractor: H&P 330	Rig/Platform Name/Num: H&P 330		
Job Purpose: Cement Surface Casing			
Well Type: Development Well	Job Type: Cement Surface Casing		
Sales Person: HIMES, JEFFREY	Srvc Supervisor: ARNOLD, EDWARD	MBU ID Emp #: 439784	

Job Personnel

HES Emp Name	Exp Hrs	Emp #	HES Emp Name	Exp Hrs	Emp #	HES Emp Name	Exp Hrs	Emp #
ARNOLD, EDWARD John	12.25	439784	BRENNECKE, ANDREW Bailey	12.25	486345	CARTER, ERIC Earl	12.25	345598
MILLER II, MATTHEW Reginald	12.25	425164						

Equipment

HES Unit #	Distance-1 way	HES Unit #	Distance-1 way	HES Unit #	Distance-1 way	HES Unit #	Distance-1 way
10001431	120 mile	10724643	120 mile	10829465	120 mile	11360871	120 mile
11542767	120 mile						

Job Hours

Date	On Location Hours	Operating Hours	Date	On Location Hours	Operating Hours	Date	On Location Hours	Operating Hours
9.8.2011	12.25	6						

TOTAL	Total is the sum of each column separately							
-------	--------------------------------------------	--	--	--	--	--	--	--

Job

Formation Name	Top	Bottom	Called Out	Date	Time	Time Zone
Formation Depth (MD)			On Location	08 - Sep - 2011	11:30	MST
Form Type	BHST		Job Started	08 - Sep - 2011	15:22	MST
Job depth MD	2710. ft	Job Depth TVD	2710. ft	Job Completed	08 - Sep - 2011	20:31
Water Depth		Wk Ht Above Floor	3. ft	Departed Loc	08 - Sep - 2011	23:45
Perforation Depth (MD)	From	To				

Well Data

Description	New / Used	Max pressure psig	Size in	ID in	Weight lbm/ft	Thread	Grade	Top MD ft	Bottom MD ft	Top TVD ft	Bottom TVD ft
Open Hole				14.75				.	2710.		
Surface Casing	Unknown		9.625	8.921	36.			.	2696.7		

Sales/Rental/3rd Party (HES)

Description	Qty	Qty uom	Depth	Supplier
R/A DENSOMETER W/CHART RECORDER,/JOB,ZI	1	JOB		
PORT. DATA ACQUIS. W/OPTICEM RT W/HES	1	EA		
ADC (AUTO DENSITY CTRL) SYS, /JOB,ZI	1	JOB		
PLUG,CMTG,TOP,9 5/8,HWE,8.16 MIN/9.06 MA	1	EA		

Tools and Accessories

Type	Size	Qty	Make	Depth	Type	Size	Qty	Make	Depth	Type	Size	Qty	Make
Guide Shoe					Packer					Top Plug	9.625	1	HES
Float Shoe					Bridge Plug					Bottom Plug			
Float Collar					Retainer					SSR plug set			
Insert Float										Plug Container	9.625	1	HES
Stage Tool										Centralizers			

Miscellaneous Materials

Gelling Agt	Conc	Surfactant	Conc	Acid Type	Qty	Conc	%
Treatment Fld	Conc	Inhibitor	Conc	Sand Type	Size	Qty	

Fluid Data									
Stage/Plug #: 1									
Fluid #	Stage Type	Fluid Name	Qty	Qty uom	Mixing Density lbm/gal	Yield ft ³ /sk	Mix Fluid Gal/sk	Rate bbl/min	Total Mix Fluid Gal/sk
1	Water Spacer		20.00	bbl	8.33	.0	.0	4	
2	Gel Spacer		20.00	bbl	.	.0	.0	4	
3	Water Spacer		20.00	bbl	.	.0	.0	4	
4	Lead Cement	VERSACEM (TM) SYSTEM (452010)	1048.0	sacks	12.3	2.33	12.62	6	12.62
		12.62 Gal	FRESH WATER						
5	Tail Cement	VERSACEM (TM) SYSTEM (452010)	169.0	sacks	12.8	2.07	10.67	6	10.67
		10.67 Gal	FRESH WATER						
6	Displacement		207.00	bbl	.	.0	.0	6	
7	Topout Cement	HALCEM (TM) SYSTEM (452986)	121.0	sacks	12.5	1.97	10.96	3	10.96
		10.96 Gal	FRESH WATER						
Calculated Values		Pressures		Volumes					
Displacement	204.7	Shut In: Instant		Lost Returns		Cement Slurry	539.1	Pad	
Top Of Cement	SURFACE	5 Min		Cement Returns	8	Actual Displacement	204.7	Treatment	
Frac Gradient		15 Min		Spacers	70	Load and Breakdown		Total Job	813.8
Rates									
Circulating	RIG	Mixing	6	Displacement	6	Avg. Job	6		
Cement Left In Pipe	Amount	48.8 ft	Reason	Shoe Joint					
Frac Ring # 1 @	ID	Frac ring # 2 @	ID	Frac Ring # 3 @	ID	Frac Ring # 4 @	ID		
The Information Stated Herein Is Correct				Customer Representative Signature					

The Road to Excellence Starts with Safety

Sold To #: 344034		Ship To #: 2877281		Quote #:		Sales Order #: 8444747	
Customer: OXY GRAND JUNCTION EBUSINESS				Customer Rep: Benevides, Victor			
Well Name: CC			Well #: 697-08-58B			API/UWI #: 05-045-20078	
Field: Parachute		City (SAP): Parachute		County/Parish: Garfield			State: Colorado
Legal Description:							
Lat: N 39.534 deg. OR N 39 deg. 32 min. 1.982 secs.				Long: W 108.242 deg. OR W -109 deg. 45 min. 29.246 secs.			
Contractor: H&P 330			Rig/Platform Name/Num: H&P 330				
Job Purpose: Cement Surface Casing						Ticket Amount:	
Well Type: Development Well			Job Type: Cement Surface Casing				
Sales Person: HIMES, JEFFREY			Srvc Supervisor: ARNOLD, EDWARD			MBU ID Emp #: 439784	

Activity Description	Date/Time	Cht #	Rate bbl/min	Volume bbl		Pressure psig		Comments
				Stage	Total	Tubing	Casing	
Call Out	09/08/2011 05:30							
Pre-Convoy Safety Meeting	09/08/2011 08:15							Including entire cement crew.
Crew Leave Yard	09/08/2011 08:30							
Arrive At Loc	09/08/2011 11:30							Rig still Running casing.
Assessment Of Location Safety Meeting	09/08/2011 11:45							Water; PH 7; KCL 0; So4 <200; Fe 0; Calcium 120; Chlorides 0; Temp 60; TDS 180.
Pre-Rig Up Safety Meeting	09/08/2011 12:00							Including entire cement crew.
Rig-Up Equipment	09/08/2011 12:05							1 Elite # 1; 1 660 bulk truck; 1 field storage silo; 1 hard line to floor; 2 lines to uprights. 9.625" compact head.
Rig-Up Completed	09/08/2011 13:30							
Pre-Job Safety Meeting	09/08/2011 15:00							Including everyone on location.
Start Job	09/08/2011 15:22							TD 2710; TP 2696.74; SJ 48.86; OH 14 3/4; Casing 9.625" 36#; Mud 9.1 ppg. Parasite set at 2482.
Pump Water	09/08/2011 15:23		2	2			36.0	Fill lines with fresh water.
Test Lines	09/08/2011 15:26					3640.0		Good pressure test, no leaks.
Pump Spacer 1	09/08/2011 15:32		4	20			107.0	20 BBL fresh water spacer.
Pump Spacer 2	09/08/2011 15:39		4	20			83.0	20 BBL Gel Water

Activity Description	Date/Time	Cht #	Rate bbl/min	Volume bbl		Pressure psig		Comments
				Stage	Total	Tubing	Casing	
Pump Spacer 1	09/08/2011 15:44		4	20			118.0	20 BL H2O Spacer
Pump Lead Cement	09/08/2011 15:50		6	434.8			285.0	1048 sks Lead Cement, 12.3 ppg, 2.33 cf3, 12.62 gal/sk.
Pump Tail Cement	09/08/2011 17:05		6	62.3			300.0	169 sks Tail Cement, 12.8 ppg, 2.07 cf3, 10.67 gal/sk.
Shutdown	09/08/2011 17:16							
Drop Plug	09/08/2011 17:17							Plug left container.
Pump Displacement	09/08/2011 17:18		6	194.7			904.0	Fresh water displacement.
Bump Plug	09/08/2011 17:45				204.7		1150.0	Bumped plug, took 500 PSI over.
Slow Rate	09/08/2011 17:48		2	10			600.0	Slow rate 10 BBL's prior to bumping the plug.
Check Floats	09/08/2011 18:00							Floats held, 1 BBL back
Pressure Up Well	09/08/2011 18:03						1500.0	Casing test. hold 1500 PSI for 30 Min
Release Casing Pressure	09/08/2011 18:34							
Pump Water	09/08/2011 18:54		2	10			707.0	Pump Sugar water down parasite string to clear out.
Pump Water - End	09/08/2011 19:02							
End Job	09/08/2011 19:05							
Start Job	09/08/2011 20:02							Top Out 121 sks, 12.5 ppg, 1.97 cf3, 10.96 gal/sk.
Pump Water	09/08/2011 20:03			2		22.0		Boost 2 BBL ahead.
Pump Spacer 1	09/08/2011 20:05		2	10		22.0		Pump Water Ahead.
Pump Cement	09/08/2011 20:15		3	42		125.0		Pump Top Out Cement. Got 8 BBL to Surface. Checked cement 1 hr after pumping, cement fell back 15 ft.
Shutdown	09/08/2011 20:30							
End Job	09/08/2011 20:31							

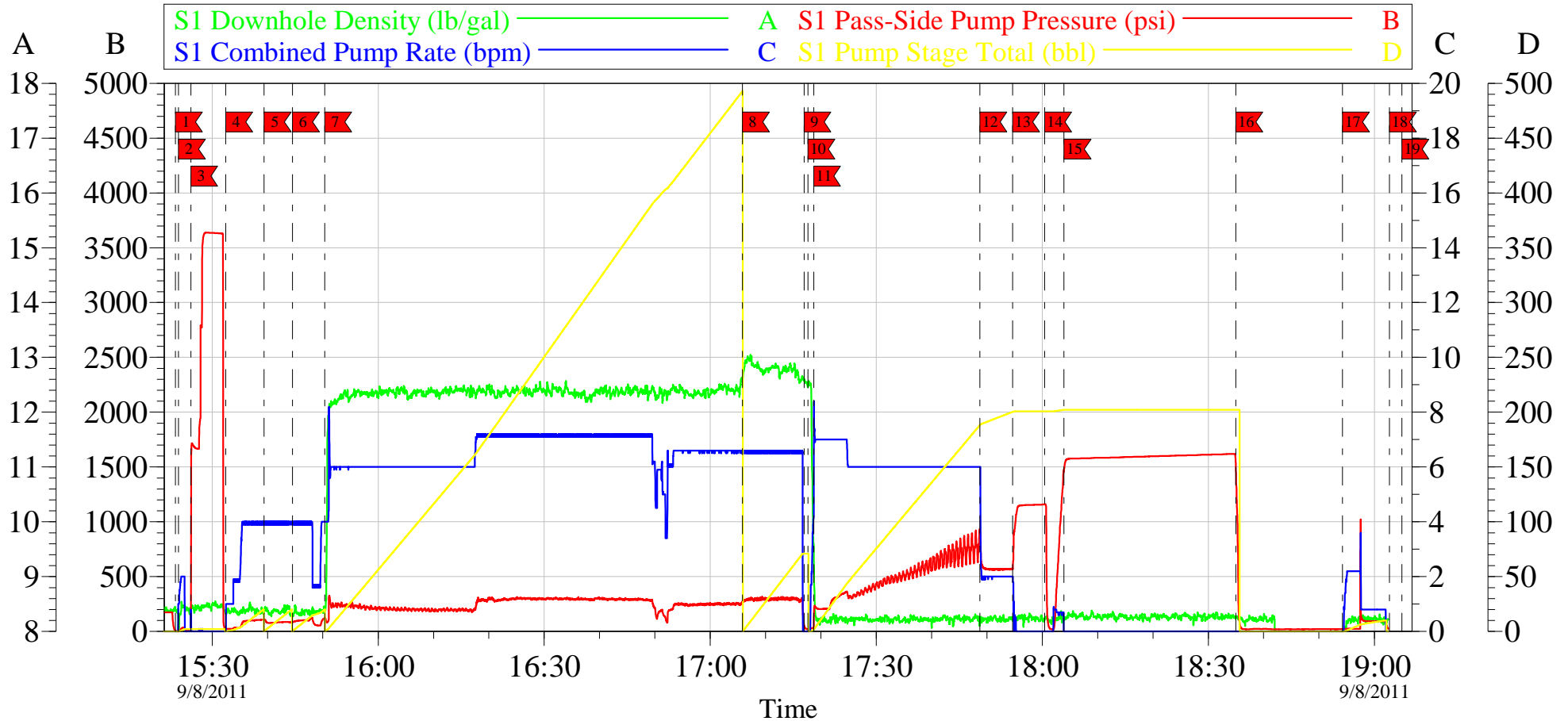
Cementing Job Log

Activity Description	Date/Time	Cht #	Rate bbl/ min	Volume bbl		Pressure psig		Comments
				Stage	Total	Tubing	Casing	
Pre-Rig Down Safety Meeting	09/08/2011 21:45							Including entire cement crew.
Rig-Down Equipment	09/08/2011 21:50							
Rig-Down Completed	09/08/2011 23:00							
Pre-Convoy Safety Meeting	09/08/2011 23:30							Including entire cement crew.
Crew Leave Location	09/08/2011 23:45							Crew leave location for Service Center or another location.
Other	09/08/2011 23:45							Thank You for using Halliburton. Ed Arnold and Crew.

OXY

9.625 Surface

CC 697-08-53B



Local Event Log					
1	Start Job	15:23:22	2	Fill Lines	15:23:55
3	Test Lines	15:26:08	4	H2O Spacer	15:32:27
5	Gel Spacer	15:39:24	6	H2O Spacer	15:44:30
7	Lead Cement	15:50:21	8	Tail Cement	17:05:49
9	Shut Down	17:16:57	10	Drop Plug	17:17:39
11	H2O Displacemet	17:18:42	12	Slow Rate	17:48:45
13	Bump Plug	17:54:38	14	Check Floats	18:00:27
15	Casing Test	18:03:57	16	Release Pressure	18:34:59
17	Pump Out Parasite	18:54:15	18	Shut Down	19:02:44
19	End Job	19:05:00			

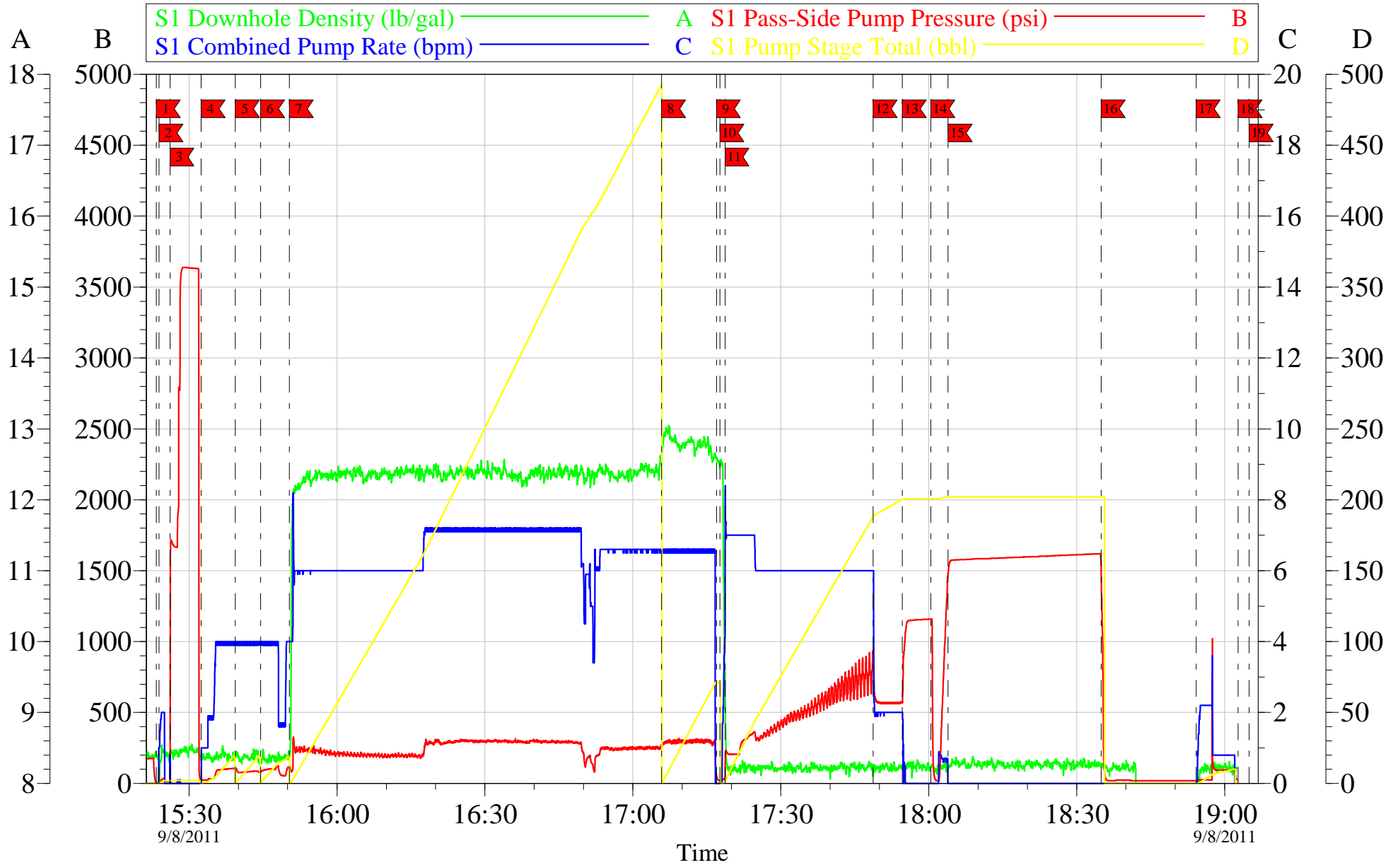
Customer: OXY	Job Date: 08-Sep-2011	Sales Order #: 8444747
Well Description: CC 697-08-53B	Job Type: 9.625 Surface	ADC Used: Yes
Company Rep: Jeff	Cement Supervisor: Ed Arnold	Elite # 1: Andrew Brennecke, Eric Carter

OptiCem v6.4.10
08-Sep-11 19:30

OXY

9.625 Surface

CC 697-08-53B



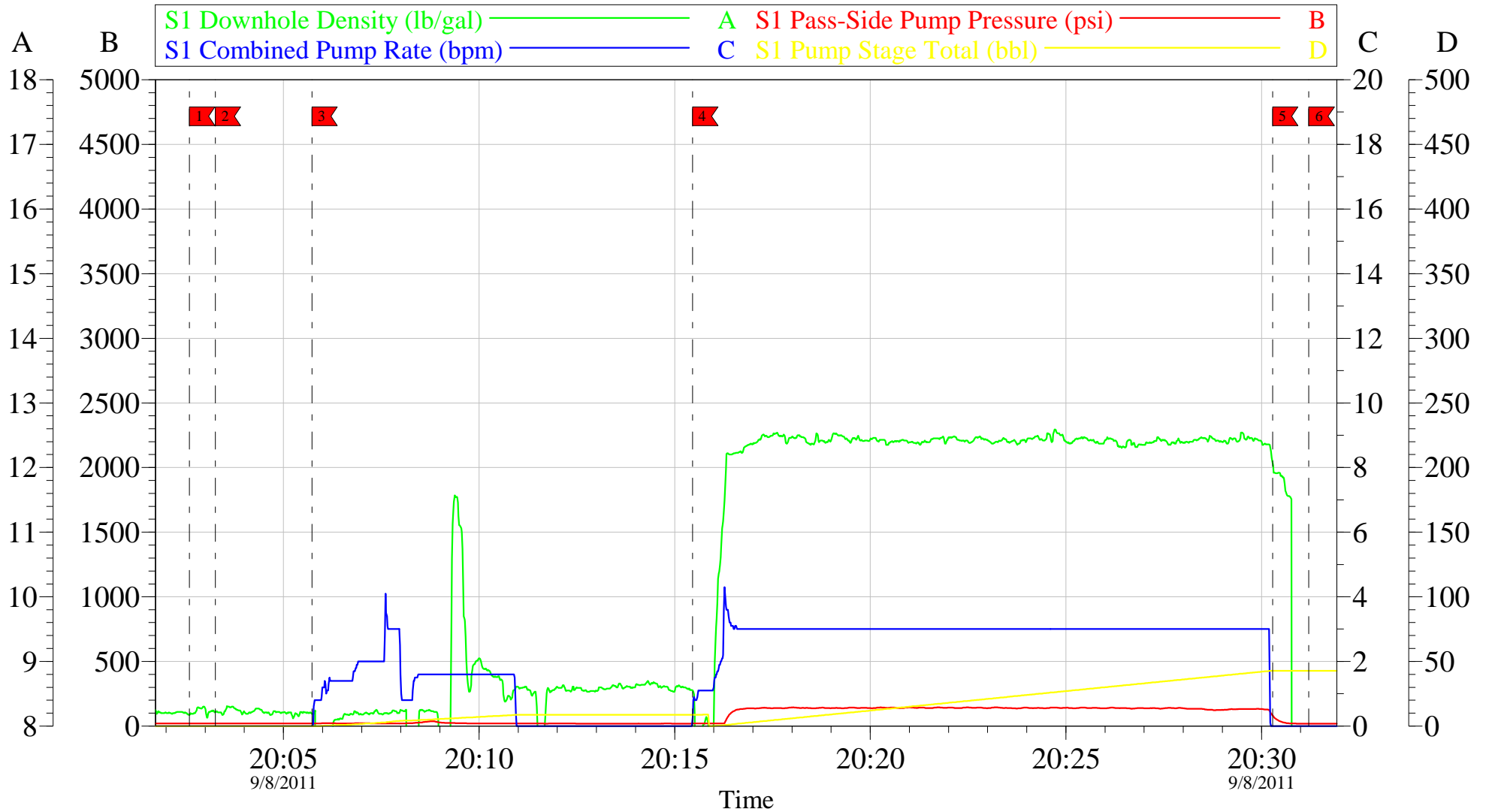
Customer: OXY	Job Date: 08-Sep-2011	Sales Order #: 8444747
Well Description: CC 697-08-53B	Job Type: 9.625 Surface	ADC Used: Yes
Company Rep: Jeff	Cement Supervisor: Ed Arnold	Elite # 1: Andrew Brennecke, Eric Carter

OptiCem v6.4.10
08-Sep-11 19:30

OXY

Top Out

CC 697-08-58B



Local Event Log			
1	Start Job	20:02:36	2
2	Boost Water	20:03:16	3
3	Water Ahead	20:05:44	4
4	Pump Cement	20:15:27	5
5	Shut Down	20:30:17	6
6	End Job	20:31:13	

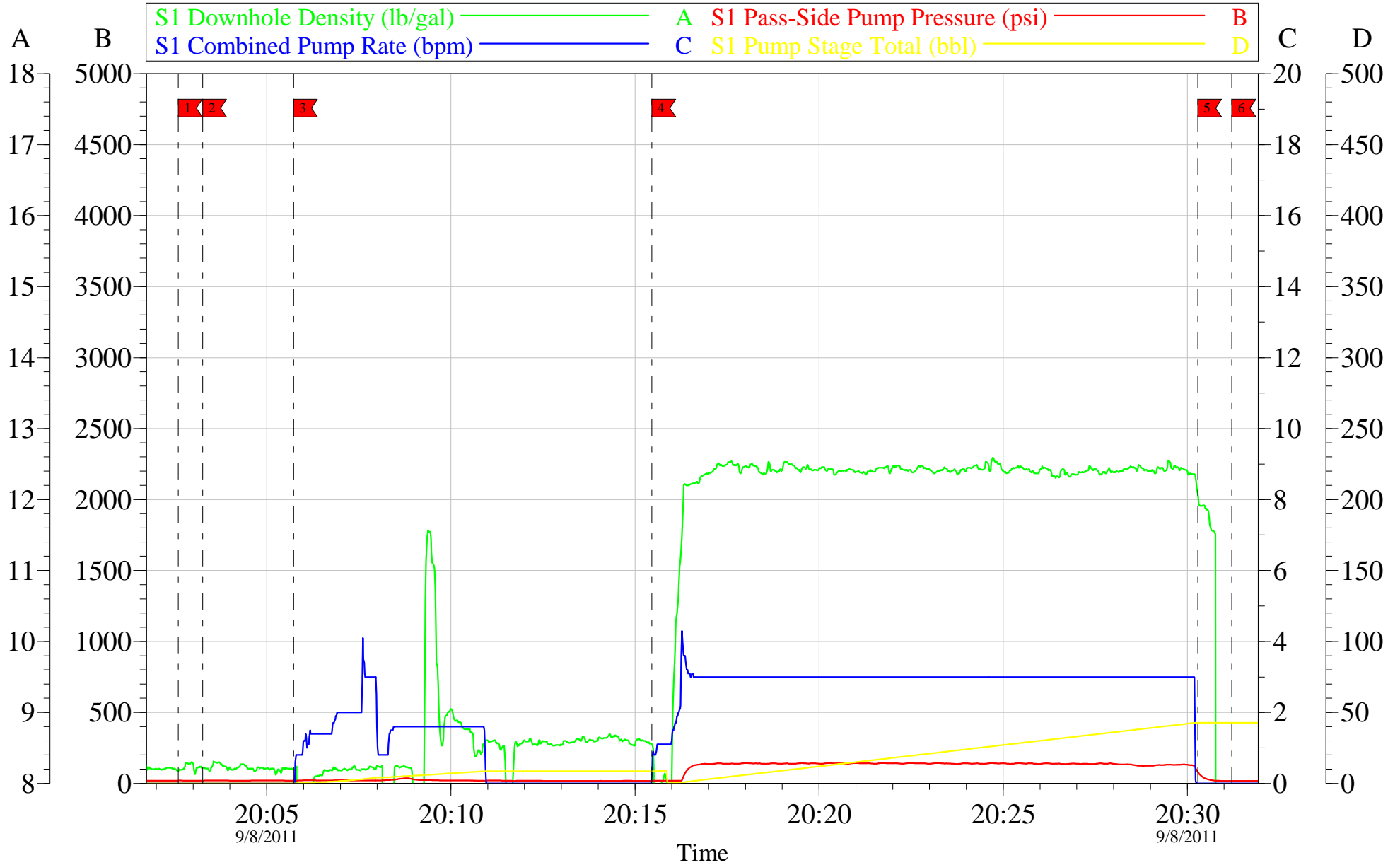
Customer: OXY	Job Date: 08-Sep-2011	Sales Order #: 8444747
Well Description: CC 697-08-58B	Job Type: Top Out	ADC Used: Yes
Company Rep: Derick	Cement Supervisor: Ed Arnold	Elite # 1: Andrew Brennecke

OptiCem v6.4.10
08-Sep-11 20:48

OXY

Top Out

CC 697-08-58B



Customer: OXY	Job Date: 08-Sep-2011	Sales Order #: 8444747
Well Description: CC 697-08-58B	Job Type: Top Out	ADC Used: Yes
Company Rep: Derick	Cement Supervisor: Ed Arnold	Elite # 1: Andrew Brennecke

Sales Order #: 8444747	Line Item: 10	Survey Conducted Date: 9/8/2011
Customer: OXY GRAND JUNCTION EBUSINESS		Job Type (BOM): CMT SURFACE CASING BOM
Customer Representative: DREICK		API / UWI: (leave blank if unknown) 05-045-20078
Well Name: CC		Well Number: 697-08-58B
Well Type: Development Well	Well Country: United States of America	
H2S Present: No	Well State: Colorado	Well County: Garfield

Dear Customer,

We hope that you were satisfied with the service quality of this job performed by Halliburton. It is the aim of our management and service personnel to deliver equipment and service of a standard unmatched in the service sector of the energy industry.

Please take the time to let us know if our performance met with your satisfaction. Please be as critical as possible to ensure we constantly improve our service. Your comments are of great value to us and are intended for the exclusive use of Halliburton.

CUSTOMER SATISFACTION SURVEY

CATEGORY	CUSTOMER SATISFACTION RESPONSE	
Survey Conducted Date	The date the survey was conducted	9/8/2011
Survey Interviewer	The survey interviewer is the person who initiated the survey.	EDWARD ARNOLD (HX46731)
Customer Participation	Did the customer participate in this survey? (Y/N)	Yes
Customer Representative	Enter the Customer representative name	DREICK
HSE	Was our HSE performance satisfactory? Circle Y or N	Yes
Equipment	Were you satisfied with our Equipment? Circle Y or N	Yes
Personnel	Were you satisfied with our people? Circle Y or N	Yes
Customer Comment	Customer's Comment	GOOD JOB!
Job DVA	Did we provide job DVA above our normal service today? Circle Y or N	No
Time	Please enter hours in decimal format to nearest quarter hour.	
Other	Enter short text for other efficiencies gained.	
Customer Initials	Customer's Initials	
Please provide details	Please describe how the job efficiencies were gained.	

CUSTOMER SIGNATURE

Sales Order #: 8444747	Line Item: 10	Survey Conducted Date: 9/8/2011
Customer: OXY GRAND JUNCTION EBUSINESS		Job Type (BOM): CMT SURFACE CASING BOM
Customer Representative: DREICK		API / UWI: (leave blank if unknown) 05-045-20078
Well Name: CC		Well Number: 697-08-58B
Well Type: Development Well	Well Country: United States of America	
H2S Present: No	Well State: Colorado	Well County: Garfield

KEY PERFORMANCE INDICATORS

General	
Survey Conducted Date The date the survey was conducted	9/8/2011

Cementing KPI Survey	
Type of Job Select the type of job. (Cementing or Non-Cementing)	0
Select the Maximum Deviation range for this Job What is the highest deviation for the job you just completed? This may not be the maximum well deviation.	Vertical
Total Operating Time (hours) Total Operating Hours Including Rig-up, Pumping, Rig-down. Enter in decimal format.	7
HSE Incident, Accident, Injury HSE Incident, Accident, Injury. This should be recordable incidents only.	No
Was the job purpose achieved? Was the job delivered correctly as per customer agreed design?	Yes
Operating Hours (Pumping Hours) Total number of hours pumping fluid on this job. Enter in decimal format.	5
Customer Non-Productive Rig Time (hrs) Lost time due to Halliburton in the start, execution, or completion of an ordered service or product, or delays in a follow-on service. Enter in decimal format. 0 if none.	0
Type of Rig Classification Job Was Performed Type Of Rig (classification) Job Was Performed On	Drilling Rig (Portable)
Number Of JSAs Performed Number Of Jsas Performed	5
Number of Unplanned Shutdowns Unplanned shutdown is when injection stops for any period of time.	0
Was this a Primary Cement Job (Yes / No)	Yes

Sales Order #: 8444747	Line Item: 10	Survey Conducted Date: 9/8/2011
Customer: OXY GRAND JUNCTION EBUSINESS		Job Type (BOM): CMT SURFACE CASING BOM
Customer Representative: DREICK		API / UWI: (leave blank if unknown) 05-045-20078
Well Name: CC		Well Number: 697-08-58B
Well Type: Development Well	Well Country: United States of America	
H2S Present: No	Well State: Colorado	Well County: Garfield

Primary Cement Job= Casing job, Liner job, or Tie-back job.	
Did We Run Wiper Plugs? Did We Run Top And Bottom Casing Wiper Plugs?	Top
Mixing Density of Job Stayed in Designed Density Range (0-100%) Density Range defined as +/- .20 ppg. Calculation: Total BBLs cement mixed at designed density divided by total BBLs of cement multiplied by 100	98
Was Automated Density Control Used? Was Automated Density Control (ADC) Used ?	Yes
Pump Rate (percent) of Job Stayed At Designed Pump Rate Pump Rate range defined as +/- 1bbl/min. Calculation: Total BBLs of fluid pumped at the designed rate divided by Total BBLs of fluid pumped, multiplied by 100	98
Nbr of Remedial Sqz Jobs Rqd - Competition Number Of Remedial Squeeze Jobs Required After Primary Job Performed By Competition	0
Nbr of Remedial Plug Jobs Rqd - HES Number Of Remedial Plug Jobs Needed After Primary Plug Pumped By HES	0
Nbr of Remedial Sqz Jobs Rqd - HES Number Of Remedial Squeeze Jobs Required After Primary Job Performed By HES	0