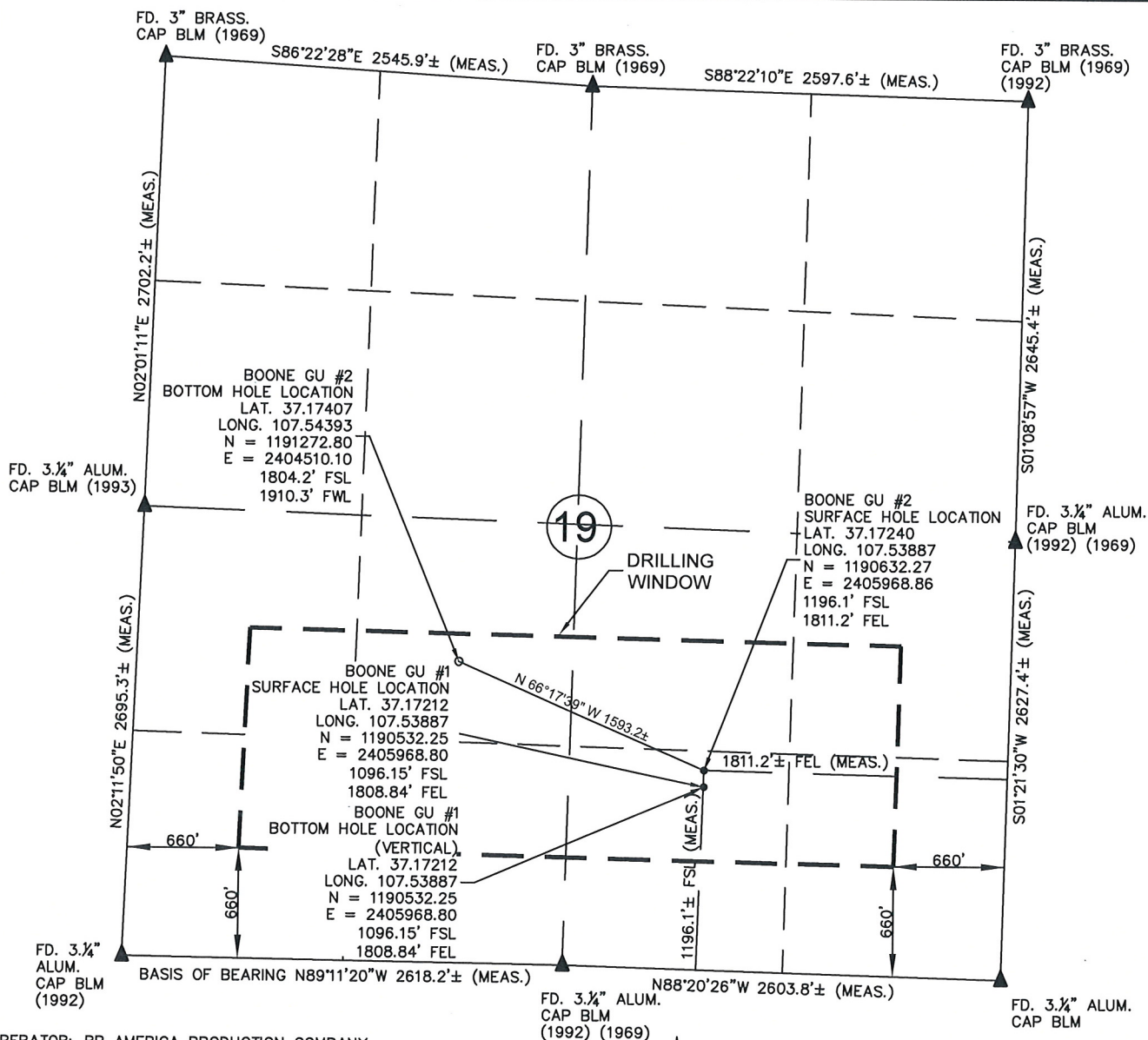


Drawing: BOONE_GU#2-MULTIWELL.DWG Plotted by: DALLAS_KNOLL Date: 11/21/2011 05:13:39 PM R:\Project Files\BP\BP 80 Acre Infill\Boone GU #2\Permitting\



OPERATOR: BP AMERICA PRODUCTION COMPANY
 LEASE: BOONE GU #2
 SECTION 19 TOWNSHIP 34 NORTH RANGE 6 WEST N.M.P.M.
 COUNTY: LA PLATA COUNTY, COLORADO

BOONE GU #2 1196.1 FEET FROM THE SOUTH LINE, AND 1811.2 FEET FROM THE EAST LINE
 BOTTOM HOLE LOCATION: 1804.2 FEET FROM THE SOUTH LINE, AND 1910.3 FEET FROM THE WEST LINE
 GROUND LEVEL ELEVATION: 6917.6'
 BOONE GU #1 1096.2 FEET FROM THE SOUTH LINE, AND 1808.8 FEET FROM THE EAST LINE
 BOTTOM HOLE LOCATION: 1096.2 FEET FROM THE SOUTH LINE, AND 1808.8 FEET FROM THE EAST LINE
 GROUND LEVEL ELEVATION: 6918.5'

- LEGEND:
 ● = PROPOSED WELL HEAD
 ○ = BOTTOM HOLE LOCATION
 ▲ = SECTION CORNERS LOCATED
 △ = SECTION CORNERS NOT FOUND OR SET THIS SURVEY (CALCULATED LOCATION).
 S.U.I.T. = SOUTHERN UTE INDIAN TRIBE
 BLM = BUREAU OF LAND MANAGEMENT
- SCALE 1" = 1000'
 0 500 1000
- 1) BASIS OF BEARING: GPS OBSERVATION ALONG THE SOUTH LINE OF THE SW1/4 OF SAID SECTION 19. BEARS: N89°11'20"W
 - 2) DATE FIELD SURVEY: 10/01/11
 - 3) ELEVATION DETERMINED FROM NGVD 1988 DATUM, AND COLLECTED VIA NAD 83 SPC CO-S, FEET (GRID).
 - 4) RECORD BEARING AND DISTANCE TAKEN FROM GLO PLAT ON FILE AT BLM OFFICE IN DURANGO, CO.
 - 5) ALL DIMENTIONS SHOWN HEREON ARE ON SPC CO-S GRID.
 - 6) INSTRUMENT OPERATOR: BILL MITCHELL
 - 7) PDOP VALUE: 1.8

PROJ. NO. 49228572	FILE NO. BOONEGU2-MULTIWELL	BOONE GU#2 MULTI - WELL PLAN		REV A
DRAWN BY DK	DATE 11/21/11	CLIENT PC	BP AMERICA PROD. CO. - DURANGO, CO	