

T11N, R57W, 6th P.M.

WHITTING OIL & GAS CORP.

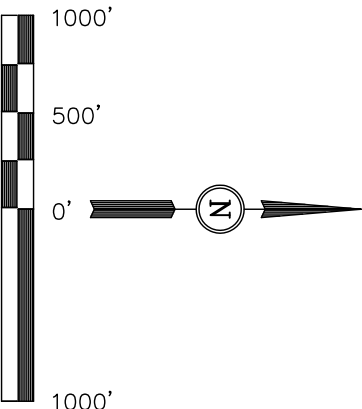
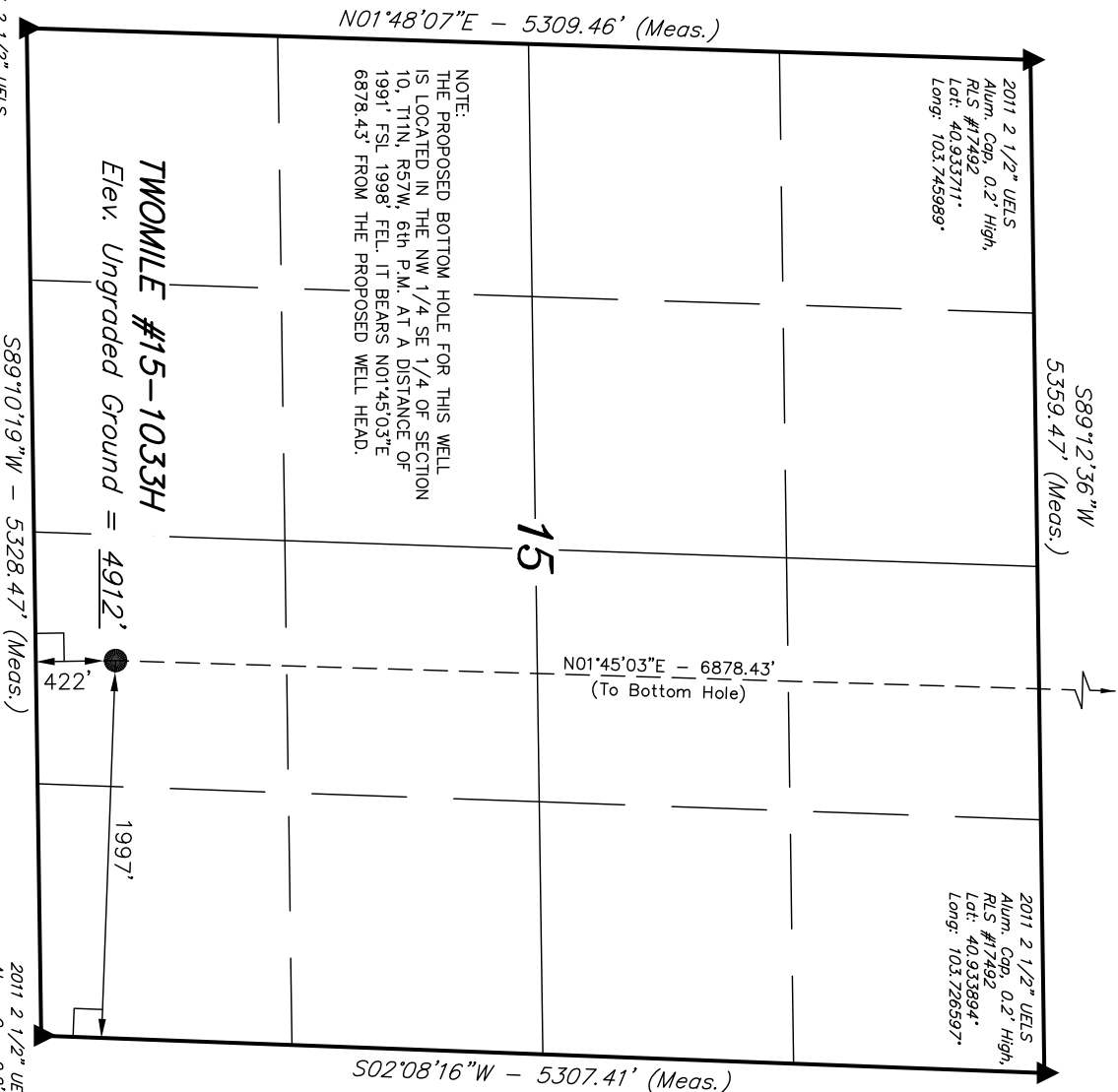
Well location, TWOMILE #15-1033H, (SURFACE LOCATION) located as shown in the SW 1/4 SE 1/4 of Section 15, T11N, R57W, 6th P.M., Weld County, Colorado.

BASIS OF ELEVATION

SPOT ELEVATION LOCATED AT THE NORTHEAST CORNER OF SECTION 8, T11N, R57W, 6th P.M. TAKEN FROM THE VIM SCHOOL, QUADRANGLE, COLORADO, WELD COUNTY, 7.5 MINUTE QUAD (TOPOGRAPHIC MAP) PUBLISHED BY THE UNITED STATES DEPARTMENT OF THE INTERIOR, GEOLOGICAL SURVEY. SAID ELEVATION IS MARKED AS BEING 5167 FEET.

BASIS OF BEARINGS

BASIS OF BEARINGS IS A G.P.S. OBSERVATION.



CERTIFICATE

THIS IS TO CERTIFY THAT THE ABOVE PLAT WAS PREPARED FROM FIELD NOTES OF ACTUAL SURVEYS MADE BY ME OR UNDER MY SUPERVISION AND THAT THE SAME ARE TRUE AND CORRECT TO THE BEST OF MY KNOWLEDGE AND BELIEF.

REGISTERED LAND SURVEYOR
REGISTRATION NO. 17492
STATE OF COLORADO
07-27-11

REVISED: 07-27-11

UINTAH ENGINEERING & LAND SURVEYING
85 SOUTH 200 EAST - VERNAL, UTAH 84078
(435) 789-1017

SCALE		DATE SURVEYED:	DATE DRAWN:
1" = 1000'		07-05-11	07-14-11
PARTY	REFERENCES		
J.H. C.M. Z.L.	G.L.O. PLAT		
WEATHER	FILE		
WARM	WHITTING OIL & GAS CORP.		

LEGEND:

- 90° SYMBOL
- PROPOSED WELL HEAD.
- SECTION CORNERS LOCATED.

2011 2 1/2" UELS
Alum. Cap. 0.2' High,
Ground, RLS #17492
Lat: 40.919147°
Long: 103.746811°

2011 2 1/2" UELS
Alum. Cap. 0.2' High,
RLS #17492
Lat: 40.919342°
Long: 103.727339°

2011 2 1/2" UELS
Alum. Cap. 0.2' High,
RLS #17492
Lat: 40.933711°
Long: 103.745989°

2011 2 1/2" UELS
Alum. Cap. 0.2' High,
RLS #17492
Lat: 40.933894°
Long: 103.726597°

PDOP=1.9

NAD 83 (SURFACE LOCATION)	
LATITUDE =	40°55'13.54" (40.920428)
LONGITUDE =	103°44'04.24" (103.734511)
NAD 27 (SURFACE LOCATION)	
LATITUDE =	40°55'13.60" (40.920444)
LONGITUDE =	103°44'02.44" (103.734011)

T11N, R57W, 6th P.M.

WHITTING OIL & GAS CORP.

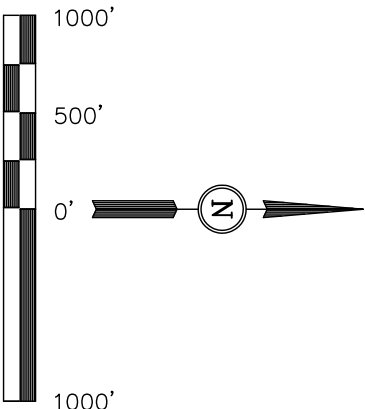
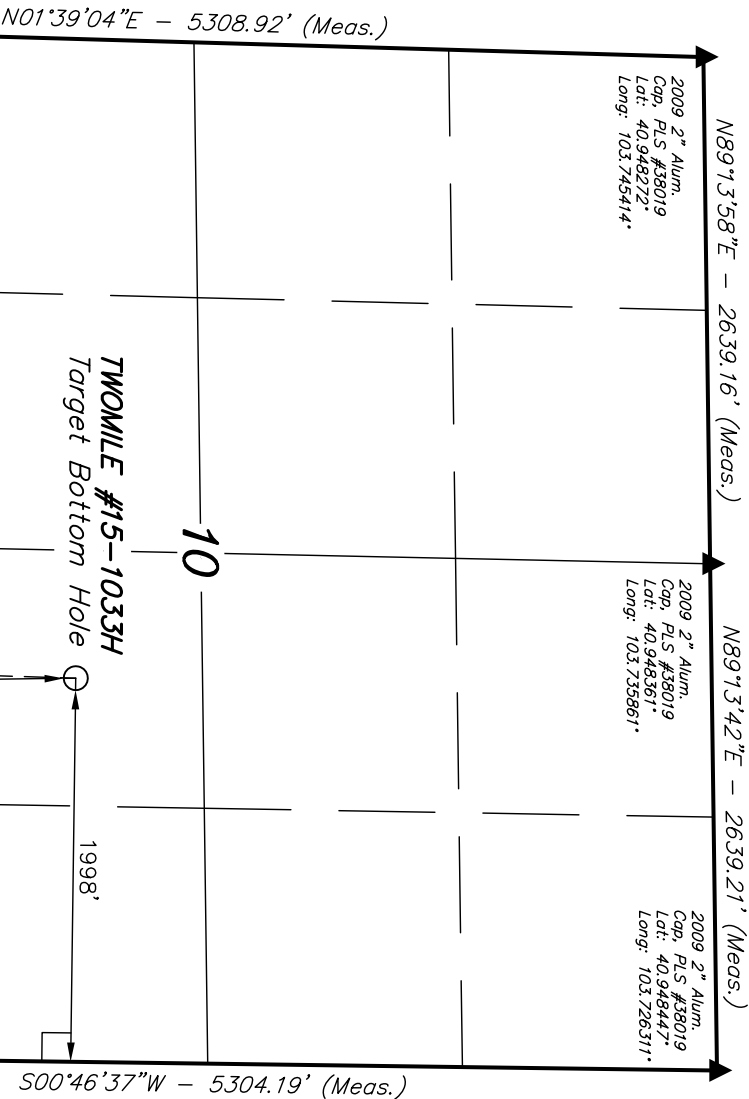
Well location, TWOMILE #15-1033H, (TARGET BOTTOM HOLE) located as shown in the NW 1/4 SE 1/4 of Section 10, T11N, R57W, 6th P.M., Weld County, Colorado.

BASIS OF ELEVATION

SPOT ELEVATION LOCATED AT THE NORTHEAST CORNER OF SECTION 8, T11N, R57W, 6th P.M. TAKEN FROM THE VIM SCHOOL, QUADRANGLE, COLORADO, WELD COUNTY, 7.5 MINUTE QUAD (TOPOGRAPHIC MAP) PUBLISHED BY THE UNITED STATES DEPARTMENT OF THE INTERIOR, GEOLOGICAL SURVEY. SAID ELEVATION IS MARKED AS BEING 5167 FEET.

BASIS OF BEARINGS

BASIS OF BEARINGS IS A G.P.S. OBSERVATION.



CERTIFICATE

THIS IS TO CERTIFY THAT THE ABOVE PLAT WAS PREPARED FROM FIELD NOTES OF ACTUAL SURVEYS MADE BY ME OR UNDER MY SUPERVISION AND THAT THE SAME ARE TRUE AND CORRECT TO THE BEST OF MY KNOWLEDGE AND BELIEF.

REGISTERED LAND SURVEYOR
REGISTRATION NO. 17492
STATE OF COLORADO

REVISED: 07-27-11

UNTAN ENGINEERING & LAND SURVEYING
85 SOUTH 200 EAST - VERNAL, UTAH 84078
(435) 789-1017

SCALE 1" = 1000' DATE SURVEYED: 07-05-11 DATE DRAWN: 07-11-11

PARTY J.H. C.M. Z.L. REFERENCES G.L.O. PLAT WEATHER WARM FILE WHITTING OIL & GAS CORP.

LEGEND:

- = 90° SYMBOL
- = PROPOSED WELL HEAD.
- = SECTION CORNERS LOCATED.

NAD 83 (TARGET BOTTOM HOLE)	
LATITUDE = 40°56'21.45" (40.939292)	
LONGITUDE = 103°44'01.39" (103.733719)	
NAD 27 (TARGET BOTTOM HOLE)	
LATITUDE = 40°56'21.51" (40.939308)	
LONGITUDE = 103°43'59.59" (103.733219)	