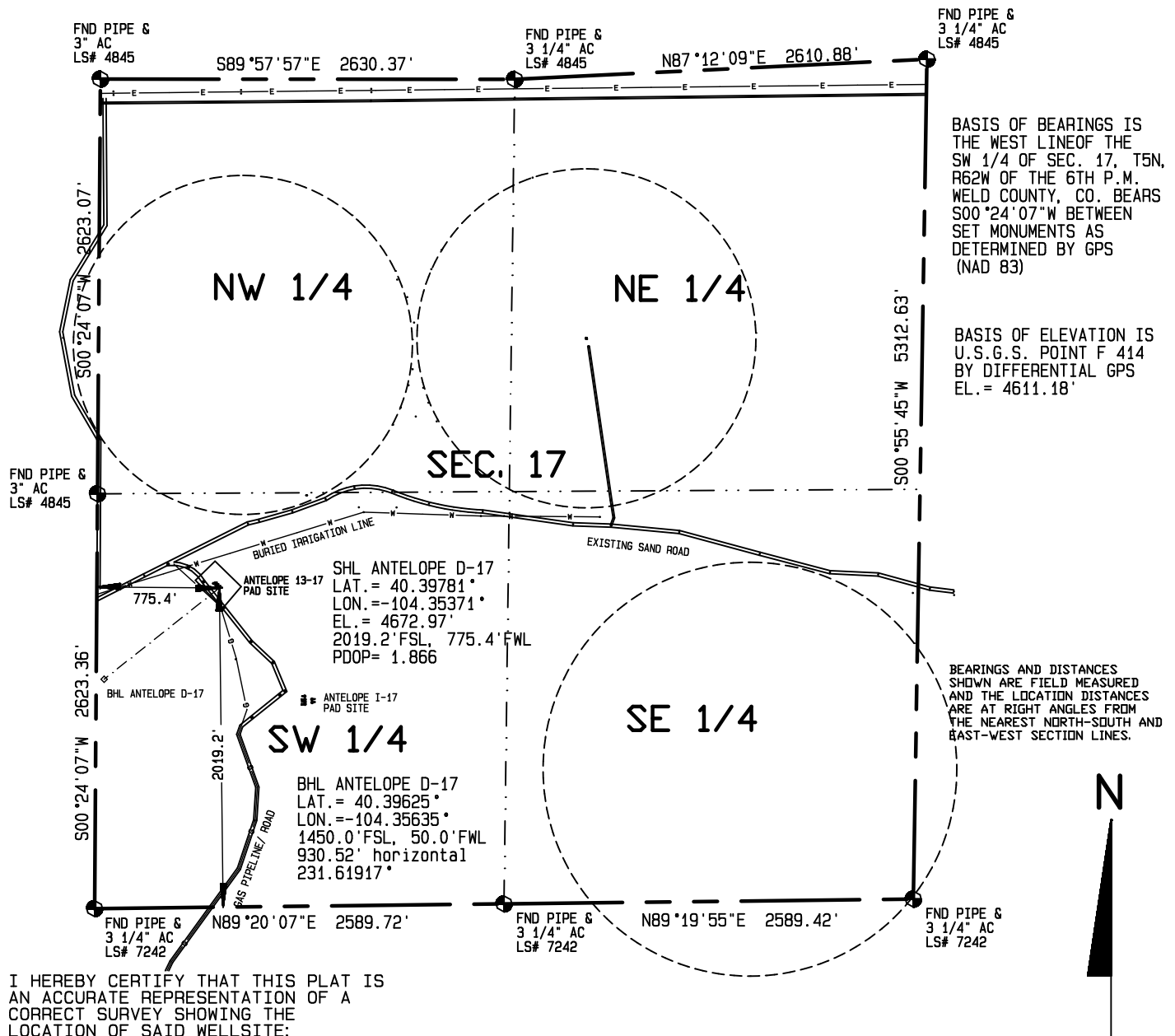


Visible improvements within 400 feet of the location include: A field road passes 271' North  
A gas line passes 82' West An irrigation line passes approximately 189' north.



I HEREBY CERTIFY THAT THIS PLAT IS AN ACCURATE REPRESENTATION OF A CORRECT SURVEY SHOWING THE LOCATION OF SAID WELLSITE:

1000 500 0 1000



Scale 1" = 1000'

Dan Griggs PLS# 38018

**CONTRACT SURVEYORS, LTD.**  
COMPLETE SURVEYING AND GLOBAL POSITIONING

2133 SOUTH BELLAIRE STREET #14  
DENVER COLORADO 80222  
(303) 756-3695



MULTI-WELL PLAN  
PAGE 3

CSL# 11104-66

DATE OF FIELD WORK:

16 NOVEMBER, 2011

DATE OF DRAWING:

23 NOVEMBER, 2011

ANTELOPE D-17

NE 1/4, SW 1/4 SEC. 17, T5N, R62W

BONANZA CREEK ENERGY OPERATING COMPANY, LLC

WELD COUNTY, COLORADO