

Continental Resources, Inc.

Weld County, CO

Sec.1-T7N-R60W

Reines 1-1H

Plan A

Plan: Plan A Rev 0

Sperry Drilling Services Proposal Report

01 December, 2011

Well Coordinates: 1,464,110.65 N, 3,404,621.58 E (40° 35' 53.72" N, 104° 02' 34.32" W)

Ground Level: 4,929.00 ft

Local Coordinate Origin:

Centered on Well Reines 1-1H

Viewing Datum:

RKB 16' @ 4945.00ft (Unknown Well)

TVDs to System:

N

North Reference:

Grid

Unit System:

API - US Survey Feet - Custom

Geodetic Scale Factor Applied

Version: 2003.16 Build: 431

HALLIBURTON

HALLIBURTON**Plan Report for Reines 1-1H - Plan A Rev 0**

Measured Depth (ft)	Inclination (°)	Azimuth (°)	Vertical Depth (ft)	+N/-S (ft)	+E/-W (ft)	Vertical Section (ft)	Dogleg Rate (°/100ft)	Build Rate (°/100ft)	Turn Rate (°/100ft)	Toolface Azimuth (°)
0.00	0.00	0.00	0.00	0.00	0.00	0.00	0.00	0.00	0.00	0.00
Reines 1-1H (SHL)										
844.00	0.00	0.00	844.00	0.00	0.00	0.00	0.00	0.00	0.00	0.00
Pierre										
3,913.00	0.00	0.00	3,913.00	0.00	0.00	0.00	0.00	0.00	0.00	0.00
Laramie										
5,780.54	0.00	0.00	5,780.54	0.00	0.00	0.00	0.00	0.00	0.00	0.00
Kickoff at 5780.54ft										
6,119.85	40.72	359.33	6,092.00	115.57	-1.35	115.57	12.00	12.00	0.00	359.33
Sharon Springs										
6,150.00	44.34	359.33	6,114.22	135.94	-1.59	135.95	12.00	12.00	0.00	0.00
Build Rate=12.00°/100ft										
6,177.02	47.58	359.33	6,133.00	155.36	-1.81	155.37	12.00	12.00	0.00	0.00
Niobrara										
6,253.75	56.79	359.33	6,180.00	215.91	-2.52	215.92	12.00	12.00	0.00	0.00
Niobrara "B"										
6,351.97	68.57	359.33	6,225.00	303.01	-3.54	303.03	12.00	12.00	0.00	0.00
Lower "B"										
6,532.47	90.23	359.33	6,258.00	479.36	-5.59	479.39	12.00	12.00	0.00	0.00
End Build at 6532.47ft - Target - 7" Casing Pt										
8,300.00	90.23	359.33	6,250.87	2,246.76	-26.22	2,246.91	0.00	0.00	0.00	0.00
Hold Angle at 90.23										
10,250.18	90.23	359.33	6,243.00	4,196.79	-48.98	4,197.07	0.00	0.00	0.00	0.00
Reines 1-11H Plan A BHL										

Plan Annotations

Measured Depth (ft)	Vertical Depth (ft)	Local Coordinates +N/-S (ft)	+E/-W (ft)	Comment
0.00	0.00	0.00	0.00	Reines 1-1H (SHL)
5,780.54	5,780.54	0.00	0.00	Kickoff at 5780.54ft
6,150.00	6,114.22	135.94	-1.59	Build Rate=12.00°/100ft
6,532.47	6,258.00	479.36	-5.59	End Build at 6532.47ft
8,300.00	6,250.87	2,246.76	-26.22	Hold Angle at 90.23
10,250.18	6,243.00	4,196.79	-48.98	Total Depth=10250.18ft

Vertical Section Information

Angle Type	Target	Azimuth (°)	Origin Type	Origin +N/-S (ft)	Origin +E/-W (ft)	Start TVD (ft)
TD	No Target (Freehand)	359.33	Slot	0.00	0.00	0.00

Survey tool program

From (ft)	To (ft)	Survey/Plan	Survey Tool
0.00	10,250.18	Plan A Rev 0	MWD

Plan Report for Reines 1-1H - Plan A Rev 0

Casing Details

Measured Depth (ft)	Vertical Depth (ft)	Name	Casing Diameter (")	Hole Diameter (")
6,532.47	6,258.00	7" Casing Pt	7	8-3/4

Formation Details

Measured Depth (ft)	Vertical Depth (ft)	Name	Lithology	Dip (°)	Dip Direction (°)
844.00	844.00	Pierre		0.00	
3,913.00	3,913.00	Laramie		0.00	
6,119.85	6,092.00	Sharon Springs		0.00	
6,177.02	6,133.00	Niobrara		0.00	
6,253.75	6,180.00	Niobrara "B"		0.00	
6,351.97	6,225.00	Lower "B"		0.00	
6,532.47	6,258.00	Target		0.00	

Targets associated with this wellbore

Target Name	TVD (ft)	+N/-S (ft)	+E/-W (ft)	Shape
Reines 1-11H Setbacks	0.00	0.00	0.00	Polygon
Reines 1-11H Section Lines	0.00	0.00	0.00	Polygon
Reines 1-11H Plan A BHL	6,243.00	4,196.79	-48.98	Point

North Reference Sheet for Sec.1-T7N-R60W - Reines 1-1H - Plan A

All data is in US Feet unless otherwise stated. Directions and Coordinates are relative to Grid North Reference.

Vertical Depths are relative to RKB 16' @ 4945.00ft (Unknown Well). Northing and Easting are relative to Reines 1-1H

Coordinate System is US State Plane 1983, Colorado Northern Zone using datum North American Datum 1983, ellipsoid GRS 1980

Projection method is Lambert Conformal Conic (2 parallel)

Central Meridian is -105.50°, Longitude Origin:0.000000°, Latitude Origin:40.783333°

False Easting: 3,000,000.00ft, False Northing: 1,000,000.00ft, Scale Reduction: 0.99997520

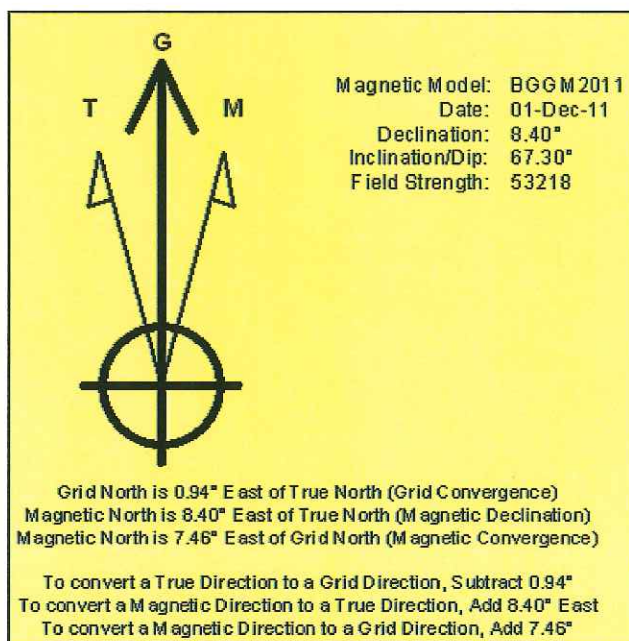
Grid Coordinates of Well: 1,464,110.65 ft N, 3,404,621.58 ft E

Geographical Coordinates of Well: 40° 35' 53.72" N, 104° 02' 34.32" W

Grid Convergence at Surface is: 0.94°

Based upon Minimum Curvature type calculations, at a Measured Depth of 10,250.18ft
the Bottom Hole Displacement is 4,197.07ft in the Direction of 359.33° (Grid).

Magnetic Convergence at surface is: -7.46° (1 December 2011, , BGGM2011)



Project: Weld County, CO
 Site: Sec.1-T7N-R60W
 Well: Reines 1-1H
 Wellbore: Plan A
 Design: Plan A Rev 0

Continental Resources, Inc.

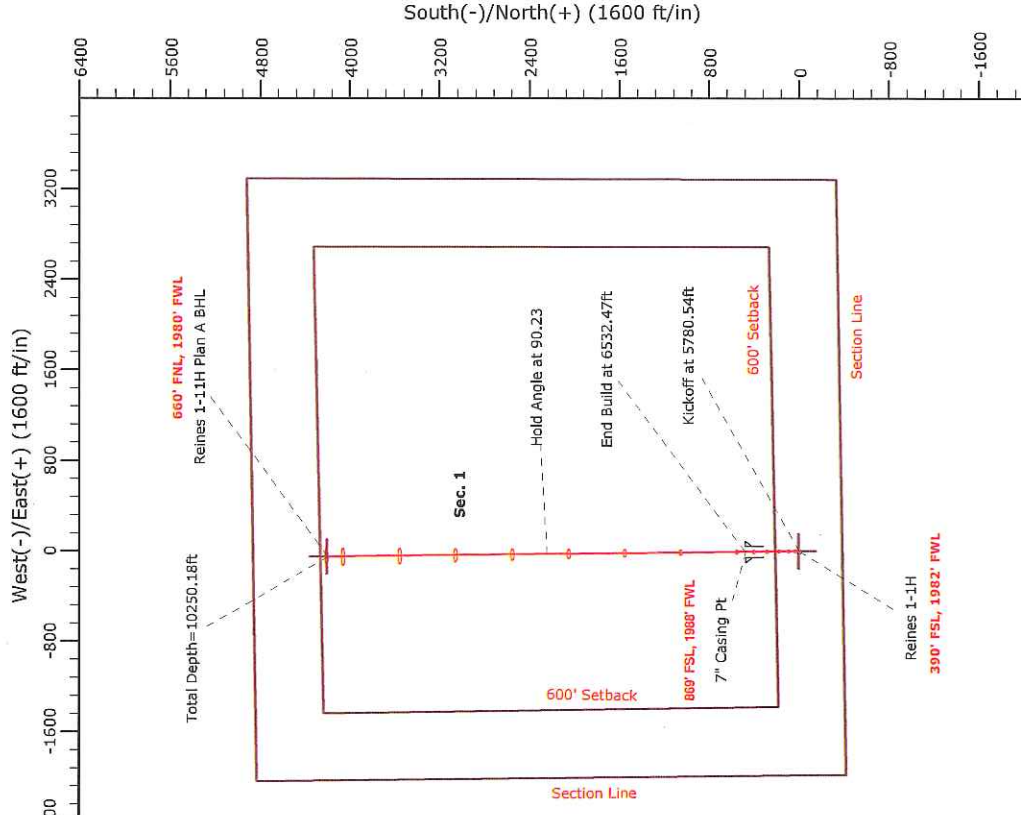
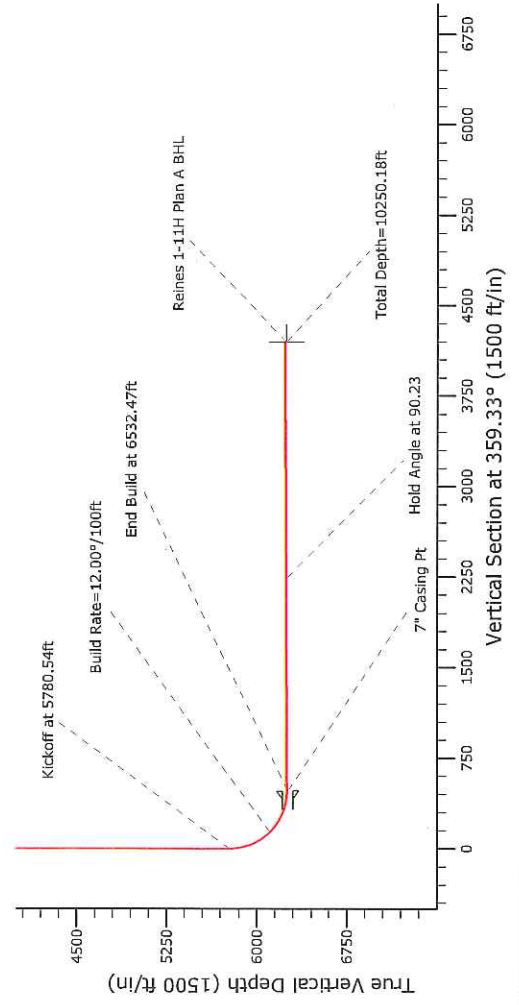
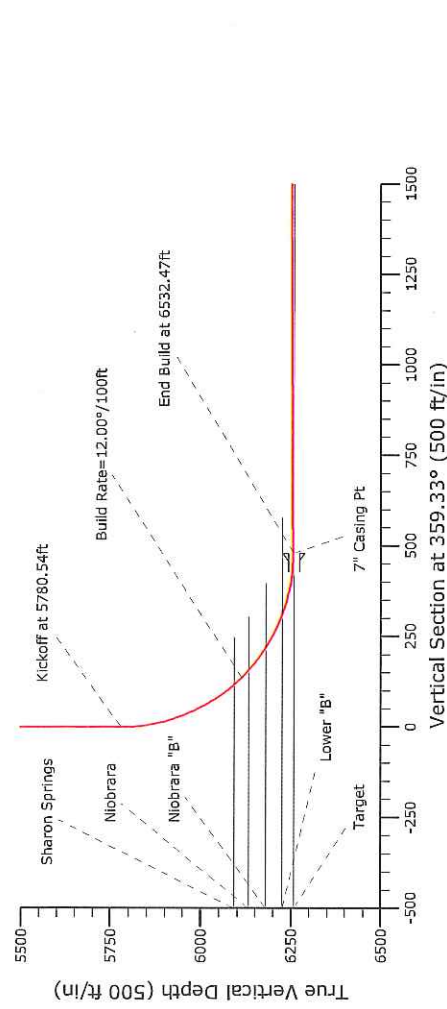
HALLIBURTON
 Sperry Drilling

WELL DETAILS: Reines 1-1H

Ground Level: 4929.00 Northing: 1464110.65 Easting: 3404821.58 Latitude: 40.598256 Longitude: -104.042867

SECTION DETAILS

Sec	MD	Inc	Azi	TVD	+N-S	+E-W	D Lag	T Face	V Sec	Target
1	0.00	0.00	0.00	0.00	0.00	0.00	0.00	0.00	0.00	
2	5780.54	0.00	0.00	5780.54	0.00	0.00	0.00	0.00	0.00	
3	6532.47	90.23	359.33	6258.00	479.35	-5.59	12.00	359.33	479.39	Reines 1-11H Plan A BHL
4	10250.18	90.23	359.33	6243.00	4196.79	-48.98	0.00	0.00	4197.07	



Plan: Plan A Rev 0 (Reines 1-1H/Plan A)

Created By: Bridget Brennecke Date: 16:41, December 01 2011

Checked: _____ Date: _____

Reviewed: _____ Date: _____

Approved: _____ Date: _____