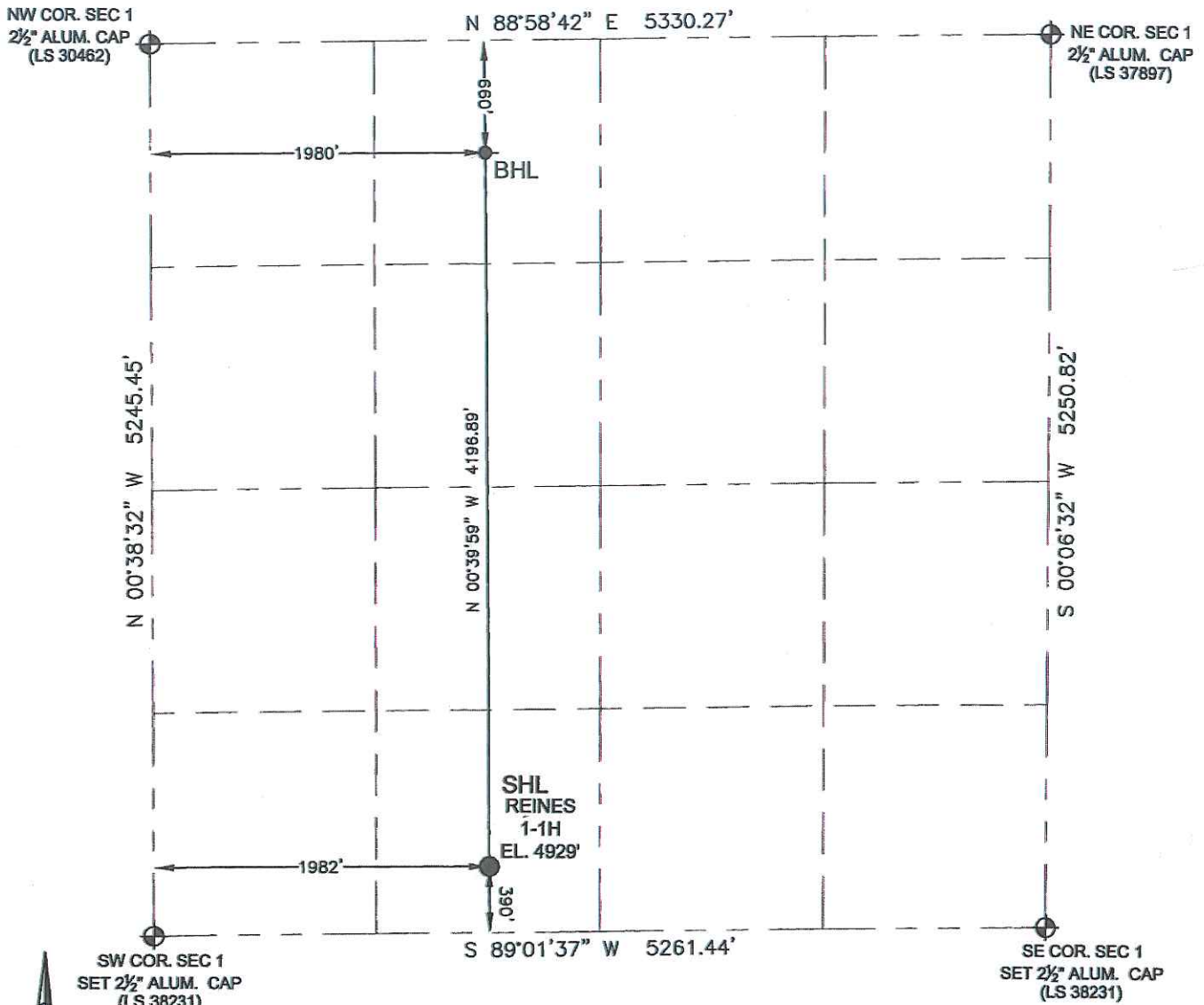


# WELL LOCATION CERTIFICATE

THIS MAP DOES NOT REPRESENT A BOUNDARY SURVEY

SECTION: 1  
TOWNSHIP: 7N  
RANGE: 60W

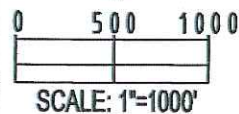


In accordance with a request from Marcus Simpson with Continental Resources, Petroleum Field Services, LLC has determined the surface location of the REINES 1-1H to be 390' from the SOUTH line and 1982' from the WEST line and the bottom hole to be 660' from the NORTH line and 1980' from the WEST line as measured at right angles from the section line of Section 1, Township 7 North, Range 60 West of the Sixth Principal Meridian, County of Weld, State of Colorado.

I hereby state that this Well Location Certificate was prepared by me, or under my direct supervision, that the fieldwork was completed on 10/28/11, for and on behalf of Continental Resources, that this is not a Land Survey Plat or an Improvement Survey Plat, and that it is not to be relied upon for establishment of fence, building, or other future improvement lines.

**SURFACE LOCATION:**  
LATITUDE: 40.598256°N  
LONGITUDE: 104.042867°W  
PDOP: 1.3  
ELEV: 4929'  
¼¼ SE¼SW¼  
NEAREST PROPERTY LINE: 390' South

**BOTTOM HOLE:**  
LATITUDE: 40.609776°N  
LONGITUDE: 104.042795°W



**Note:**

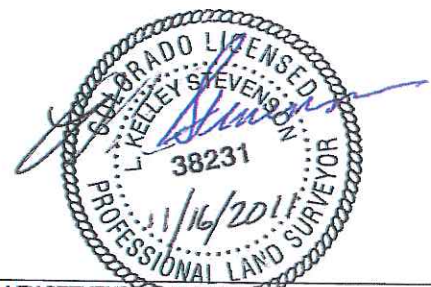
- 1) Bearings shown are Grid Bearings of the Colorado State Plane Coordinate System, North Zone, North American Datum 1983/2007. The lineal dimensions as shown herein are grid distances based upon the "U.S. Survey Foot."
- 2) Ground elevations are based on an observed GPS elevation (NAVD 1988 DATUM).
- 3) IMPROVEMENTS: See LOCATION DRAWING exhibit for all visible improvements within 400' of disturbed area.
- 4) SURFACE USE: DRYLAND CROP
- 5) INSTRUMENT OPERATOR: BRIAN RITZ

**Note:**

According to Colorado law, you must commence any legal action based upon any defect in this W.L.C. within three years after you first discover such defect. In no event, may any action based upon any defect in this survey be commenced more than ten years after the date of this certification shown hereon. (13-80-105 C.R.S.)

## LEGEND

- ⊕ = FOUND MONUMENT
- = PROPOSED WELL
- ⬮ = BOTTOM HOLE
- ◆ = EXISTING WELL



L. KELLEY STEVENSON, PLS 38231  
COLORADO LICENSED PROFESSIONAL LAND SURVEYOR  
FOR AND ON BEHALF OF P.F.S., LLC