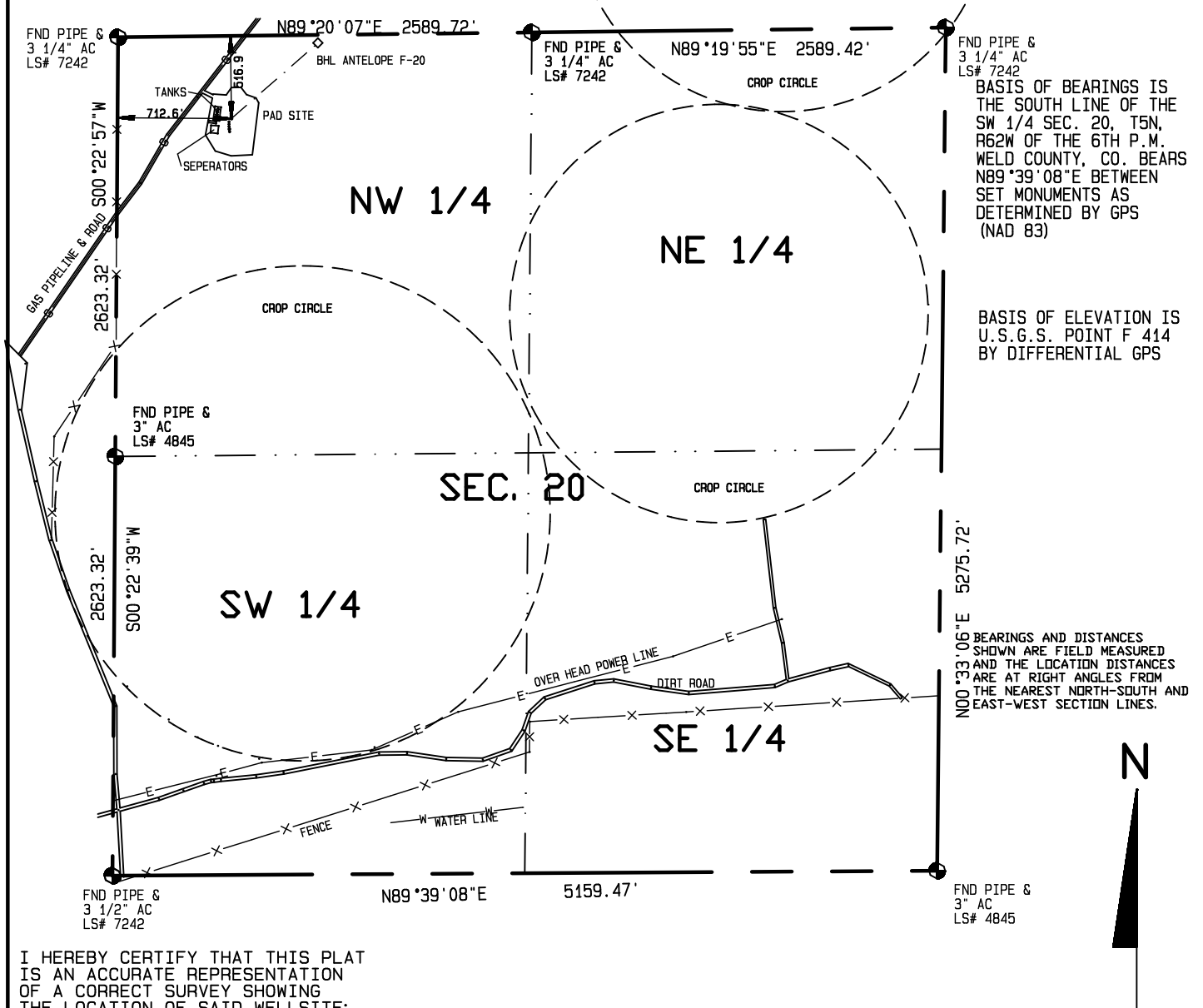


IMPROVEMENTS WITHIN 400' OF THE WELL SITE INCLUDE: A GAS PIPE LINE & ROAD PASSES 251 FEET TO THE NORTHWEST.  
A TANK BATTERY IS 74' WEST, SEPERATOR IS 92' SOUTHWEST.

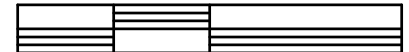
BHL ANTELOPE F-20  
LAT. = 40.39211° N  
LONG = -104.35205° W  
50.0' FNL, 1250.0' FWL  
718.48' horizontal  
48.80361° azimuth

SHL ANTELOPE F-20  
LAT. = 40.39083° N  
LONG = -104.3401° W  
ELEV. = 4651.67'  
516.9' FNL, 712.6' FWL  
PDOP = 3.803



I HEREBY CERTIFY THAT THIS PLAT  
IS AN ACCURATE REPRESENTATION  
OF A CORRECT SURVEY SHOWING  
THE LOCATION OF SAID WELLSITE:

1000 500 0 1000



Scale 1" = 1000'

Dan Griggs PLS# 38018

**CONTRACT SURVEYORS, LTD.**  
COMPLETE SURVEYING AND GLOBAL POSITIONING

2133 SOUTH BELLAIRE STREET #14  
DENVER COLORADO 80222  
(303) 756-3695



DATE OF FIELD WORK:

8 NOVEMBER 2011

DATE OF DRAWING:

1 DECEMBER 2011

ANTELOPE F-20

NW 1/4, NW 1/4 SEC. 20, T5N, R62W

BONANAZA CREEK ENERGY OPERATING COMPANY, LLC

MULTIPLE WELL PLAN  
PAGE 4

CSL# 11104-63

WELD COUNTY, COLORADO