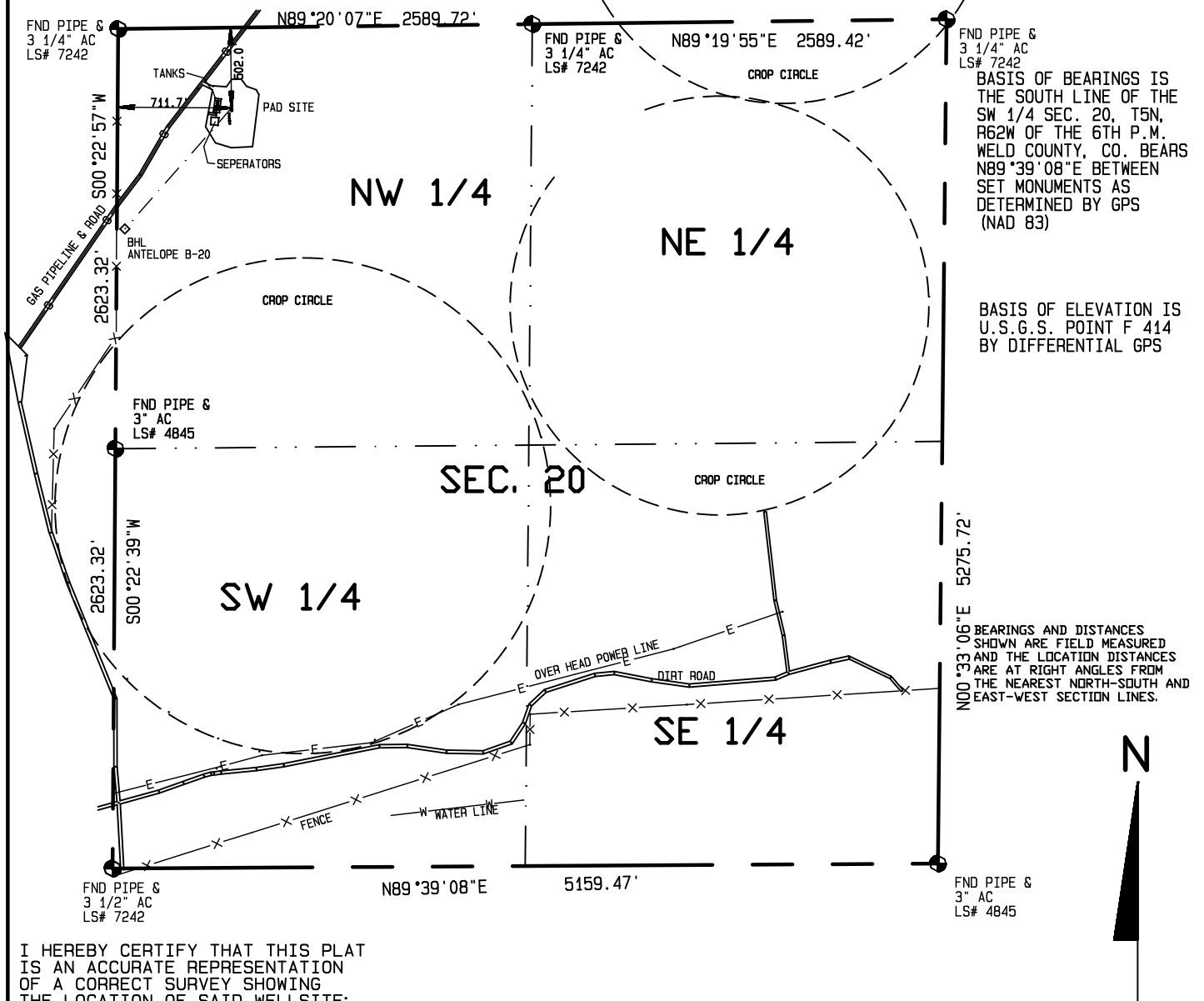


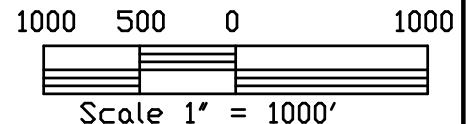
IMPROVEMENTS WITHIN 400' OF THE WELL SITE INCLUDE: A GAS PIPE LINE & ROAD PASSES 241 FEET TO THE NORTHWEST.
A TANK BATTERY IS 72' WEST, SEPERATOR IS 100' SOUTHWEST.

BHL ANTELOPE B-20
LAT. = 40.38882° N
LONG = -104.35644° W
1250.0' FNL, 50.0' FWL
1007.83' horizontal
221.42028° azimuth

SHL ANTELOPE B-20
LAT. = 40.39087° N
LONG = -104.35402° W
ELEV. = 4651.74'
502.0' FNL, 711.7' FWL
PDOP = 3.680



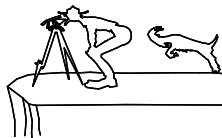
I HEREBY CERTIFY THAT THIS PLAT
IS AN ACCURATE REPRESENTATION
OF A CORRECT SURVEY SHOWING
THE LOCATION OF SAID WELLSITE:



Dan Griggs PLS# 38018

CONTRACT SURVEYORS, LTD.
COMPLETE SURVEYING AND GLOBAL POSITIONING

2133 SOUTH BELLAIRE STREET #14
DENVER COLORADO 80222
(303) 756-3695



MULTIPLE WELL PLAN
PAGE 3

CSL# 11104-63

DATE OF FIELD WORK:

8 NOVEMBER 2011

DATE OF DRAWING:

22 NOVEMBER 2011

ANTELOPE B-20

NW 1/4, NW 1/4 SEC. 20, T5N, R62W

BONANAZA CREEK ENERGY OPERATING COMPANY, LLC

WELD COUNTY, COLORADO