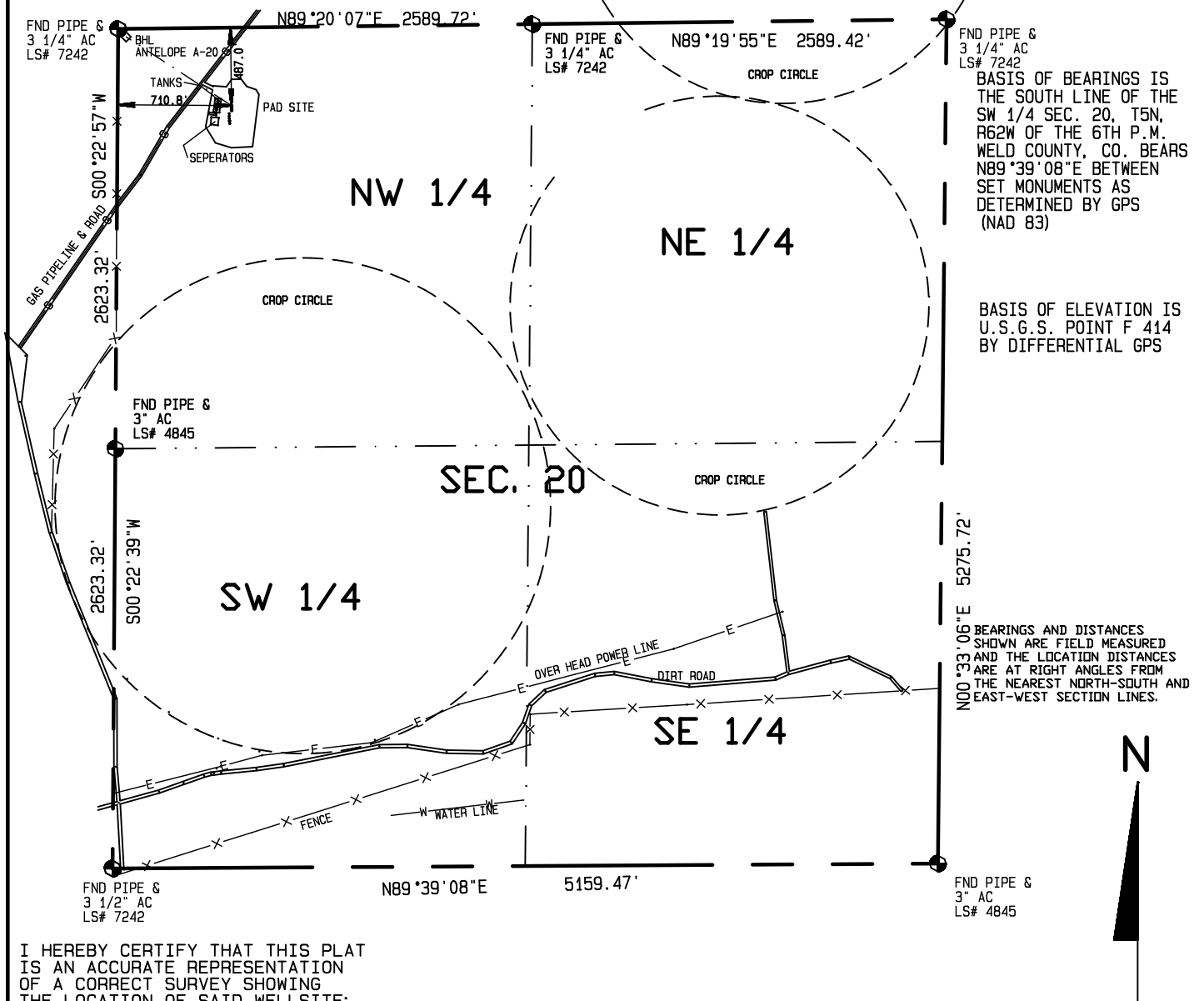


IMPROVEMENTS WITHIN 400' OF THE WELL SITE INCLUDE: A GAS PIPE LINE & ROAD PASSES 231 FEET TO THE NORTHWEST.
A TANK BATTERY IS 69' WEST, SEPERATOR IS 109' SOUTHWEST.

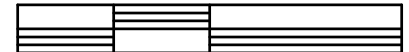
BHL ANTELOPE A-20
LAT. = 40.39211° N
LONG = -104.35636° W
50.0' FNL, 50.0' FWL
785.69' horizontal
303.12472° azimuth

SHL ANTELOPE A-20
LAT. = 40.39091° N
LONG = -104.35402° W
ELEV. = 4651.81'
487.0' FNL, 710.8' FWL
PDOP = 3.483



I HEREBY CERTIFY THAT THIS PLAT
IS AN ACCURATE REPRESENTATION
OF A CORRECT SURVEY SHOWING
THE LOCATION OF SAID WELLSITE:

1000 500 0 1000

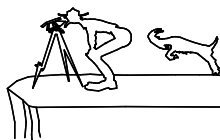


Scale 1" = 1000'

Dan Griggs PLS# 38018

CONTRACT SURVEYORS, LTD.
COMPLETE SURVEYING AND GLOBAL POSITIONING

2133 SOUTH BELLAIRE STREET #14
DENVER COLORADO 80222
(303) 756-3695



DATE OF FIELD WORK:

8 NOVEMBER 2011

DATE OF DRAWING:

22 NOVEMBER 2011

ANTELOPE A-20

NW 1/4, NW 1/4 SEC. 20, T5N, R62W

BONANAZA CREEK ENERGY OPERATING COMPANY, LLC

MULTIPLE WELL PLAN
PAGE 2

CSL# 11104-63

WELD COUNTY, COLORADO