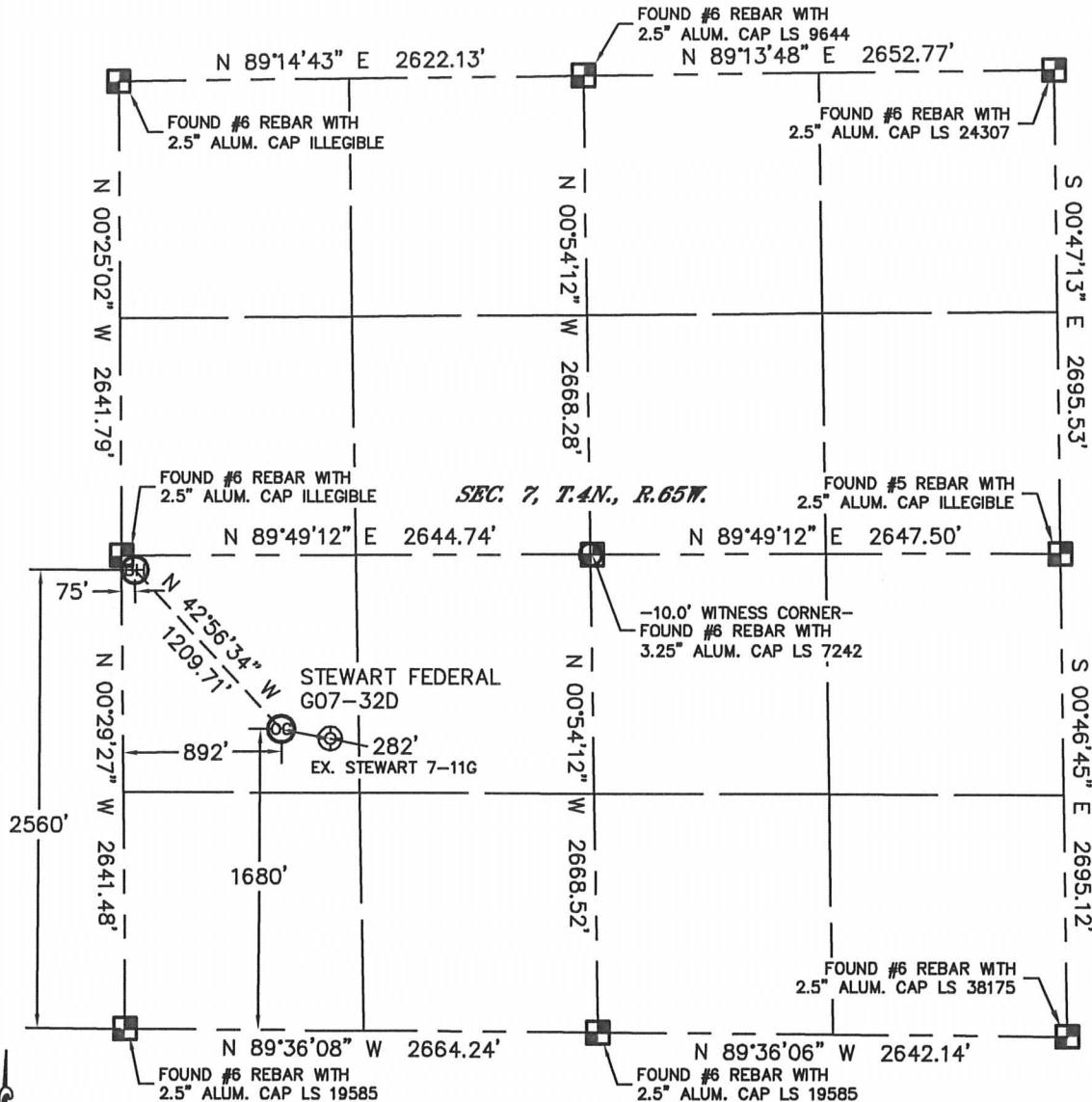


WELL LOCATION CERTIFICATE

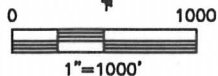
THIS MAP DOES NOT REPRESENT A BOUNDARY SURVEY

SECTION: 7
TOWNSHIP: 4N
RANGE: 65W



In accordance with a request from Matt Verblt with Noble Energy Inc. Lat40°, Inc. has determined the surface location of the STEWART FEDERAL G07-32D to be 1680' from the SOUTH line and 892' from the WEST line and the bottom hole to be 2560' from the SOUTH line and 75' from the WEST line as measured at right angles from the section lines of Section 7, Township 4 North, Range 65 West of the Sixth Principal Meridian, County of Weld, State of Colorado.

I hereby state that this Well Location Certificate was prepared by me, or under my direct supervision, that the fieldwork was completed on 8/2/11, for and on behalf of Noble Energy Inc. That this is not a Land Survey Plat or an Improvement Survey Plat, and that it is not to be relied upon for establishment of fence, building, or other future Improvement lines.



NOTE:

- 1) Bearings shown are Grid Bearings of the Colorado State Plane Coordinate System, North Zone, North American Datum 1983/2007. The lineal dimensions as contained herein are based upon the "U.S. Survey Foot."
- 2) Ground elevations are based on an observed GPS elevation (NAVD 1988 DATUM).
- 3) NEAREST EXISTING WELL: STEWART 7-11G, 282'
- 4) IMPROVEMENTS: See LOCATION DRAWING for all visible Improvements within 400' of disturbed area.
- 5) SURFACE USE: CROP FIELD
- 6) INSTRUMENT OPERATOR: ADAM KELLY

NOTE

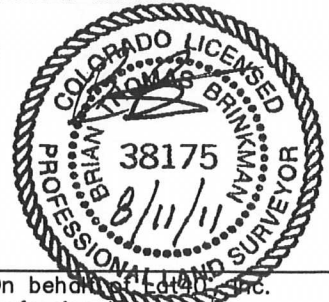
According to Colorado law, you must commence any legal action based upon any defect in this W.L.C. within three years after you discover such defect. In no event, may any action based upon any defect in this survey be commenced more than ten years after the date of the certificate shown hereon. (13-80-105 C.R.S.)

LEGEND

- = ALIQUOT MONUMENT AS DESCRIBED
- = CALCULATED POSITION

SURFACE LOCATION
LATITUDE: 40.32441°N
LONGITUDE: 104.71229°W
PDOP: 2.0
ELEV: 4697'
1/4,1/4: NW1/4SW1/4 (GOV'T LOT 3)
NEAREST PROPERTY LINE: 340' SW

BOTTOM HOLE
LATITUDE: 40.32686°N
LONGITUDE: 104.71522°W



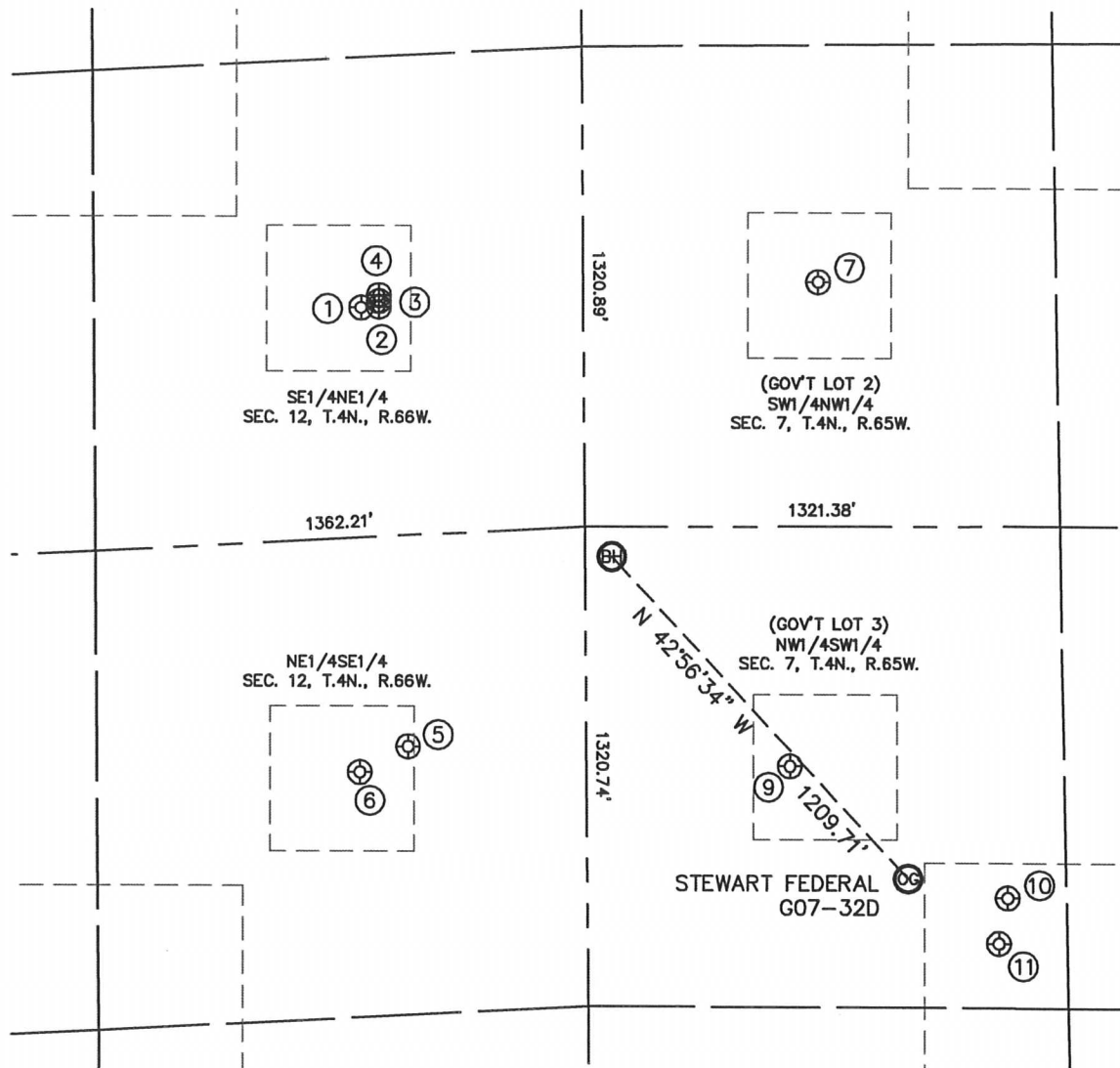
Brian T. Brinkman—On behalf of Lat40°, Inc.
Colorado Licensed Professional
Land Surveyor No. 38175

PROJECT#: 2011170

SITE SKETCH

STEWART FEDERAL G07-32D

SECTION: 7
TOWNSHIP: 4N
RANGE: 65W



- | | | | | |
|--|---|---|---|---|
| ①
CASSEDAY 42-12 1
SE1/4NE1/4
2007' FNL
619' FEL
LAT-40.32875N
LONG-104.71770W
PDOP:1.6
ELEV: 4703' | ②
CONRAD FEDERAL 24-12
SE1/4NE1/4
2007' FNL
569' FEL
LAT-40.32876N
LONG-104.71752W
PDOP:2.3
ELEV: 4703' | ③
CONRAD FEDERAL 17-12
SE1/4NE1/4
1991' FNL
569' FEL
LAT-40.32880N
LONG-104.71752W
PDOP:1.7
ELEV: 4703' | ④
CONRAD FEDERAL 41-12
SE1/4NE1/4
1975' FNL
569' FEL
LAT-40.32885N
LONG-104.71752W
PDOP:1.7
ELEV: 4703' | ⑤
STROMBERGER 43-12 #1
NE1/4SE1/4
2058' FSL
496' FEL
LAT-40.32544N
LONG-104.71726W
PDOP:1.7
ELEV: 4707' |
| ⑥
STROMBERGER UNIT 2-12
NE1/4SE1/4
1994' FSL
630' FEL
LAT-40.32525N
LONG-104.71775W
PDOP:2.5
ELEV: 4707' | ⑦
UPRC 7-5G
SW1/4NW1/4
1976' FNL
654' FWL
LAT-40.32893N
LONG-104.71314W
PDOP:1.8
ELEV: 4705' | ⑧
STEWART 7-12G
NW1/4SW1/4
1987' FSL
566' FWL
LAT-40.32527N
LONG-104.71346W
PDOP:1.4
ELEV: 4700' | ⑨
STEWART 7-11G
NW1/4SW1/4
1630' FSL
1168' FWL
LAT-40.32426N
LONG-104.71130W
PDOP:1.2
ELEV: 4694' | ⑩
STEWART G 7-25
NW1/4SW1/4
1504' FSL
1143' FWL
LAT-40.32392N
LONG-104.71139W
PDOP:1.6
ELEV: 4695' |

