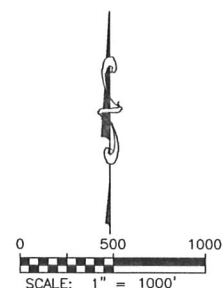
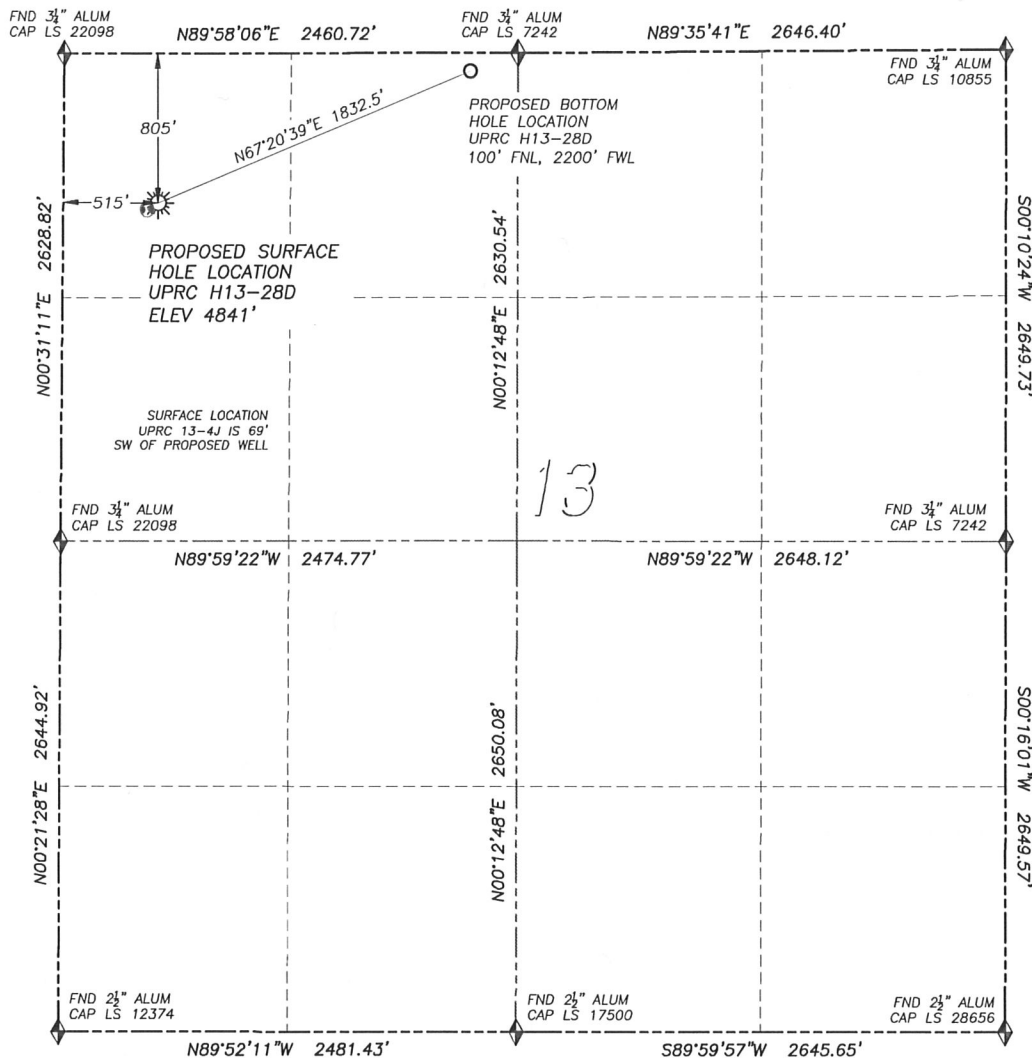


WELL LOCATION CERTIFICATE

UPRC H13-28D

SECTION 13, TOWNSHIP 3 NORTH, RANGE 65 WEST OF THE 6TH PRINCIPAL MERIDIAN

**LEGEND**

- ◆ FOUND MONUMENT AS DESCRIBED
- ☼ PROPOSED WELL
- ⊙ EXISTING WELL
- BOTTOM HOLE
- ⊘ ABANDONED WELL

NAD 83 LATITUDE AND LONGITUDE**UPRC H13-28D SURFACE HOLE:**

LATITUDE: N40.23023°
 LONGITUDE: W104.61906°
 ELEVATION: 4841'
 FOOTAGE: 805' FNL, 515' FWL
 PDOP: 1.5
 QTR/QTR: NW4/NW4
 PROP LINE: 510'± SOUTH

BOTTOM HOLE:

LATITUDE: N40.23216°
 LONGITUDE: W104.61301°
 FOOTAGE: 100' FNL, 2200' FWL

NEAREST EXISTING WELL:

UPRC 13-4J SURFACE HOLE
 LATITUDE: N40.23013°
 LONGITUDE: W104.61928°
 ELEVATION: 4840'
 69' SOUTHWEST

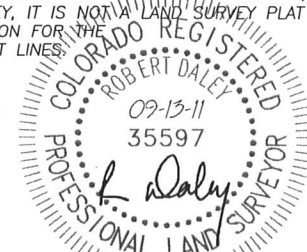
IN ACCORDANCE WITH A REQUEST FROM MIKE RODINE OF NOBLE ENERGY INC., DALEY LAND SURVEYING, INC. HAS DETERMINED THE SURFACE LOCATION OF THE UPRC H13-28D WELL TO BE 805' FNL, 515' FWL, AS MEASURED AT NINETY (90) DEGREES FROM THE SECTION LINES OF SECTION 13, TOWNSHIP 3 NORTH, RANGE 65 WEST OF THE 6TH PRINCIPAL MERIDIAN, WELD COUNTY, COLORADO. THE BOTTOM HOLE LOCATION, PROVIDED BY THE CLIENT, IS TO BE 100' FNL, 2200' FWL.

I HEREBY CERTIFY THAT THIS WELL LOCATION CERTIFICATE WAS PREPARED BY ME OR UNDER MY DIRECT SUPERVISION, THAT THE WORK WAS COMPLETED ON 9/9/2011 FOR AND ON BEHALF OF NOBLE ENERGY, INC., AND THAT THIS MAP DOES NOT REPRESENT A BOUNDARY SURVEY, IT IS NOT A LAND SURVEY PLAT OR AN IMPROVEMENT SURVEY PLAT AND IT IS NOT TO BE RELIED UPON FOR THE ESTABLISHMENT OF FENCE, BUILDING OR OTHER FUTURE IMPROVEMENT LINES.

NOTES:

- 1) BEARINGS FOR THIS MAP ARE ASSUMED AND BASED UPON GPS OBSERVATIONS MADE BETWEEN MONUMENTS LOCATED AT THE NORTHWEST CORNER AND WEST QUARTER CORNER OF SECTION 13, T.3N., R.65W.
- 2) HORIZONTAL DATUM IS NAD83.
- 3) VERTICAL DATUM IS NAVD88 AND ORIGINATES FROM LOCAL C.O.R.S. STATIONS, UTILIZING THE GEOID09 MODEL.
- 4) SEE LOCATION DRAWING FOR VISIBLE IMPROVEMENTS WITHIN 400' OF PROPOSED DISTURBED AREA.
- 5) SURFACE USE: PASTURE.

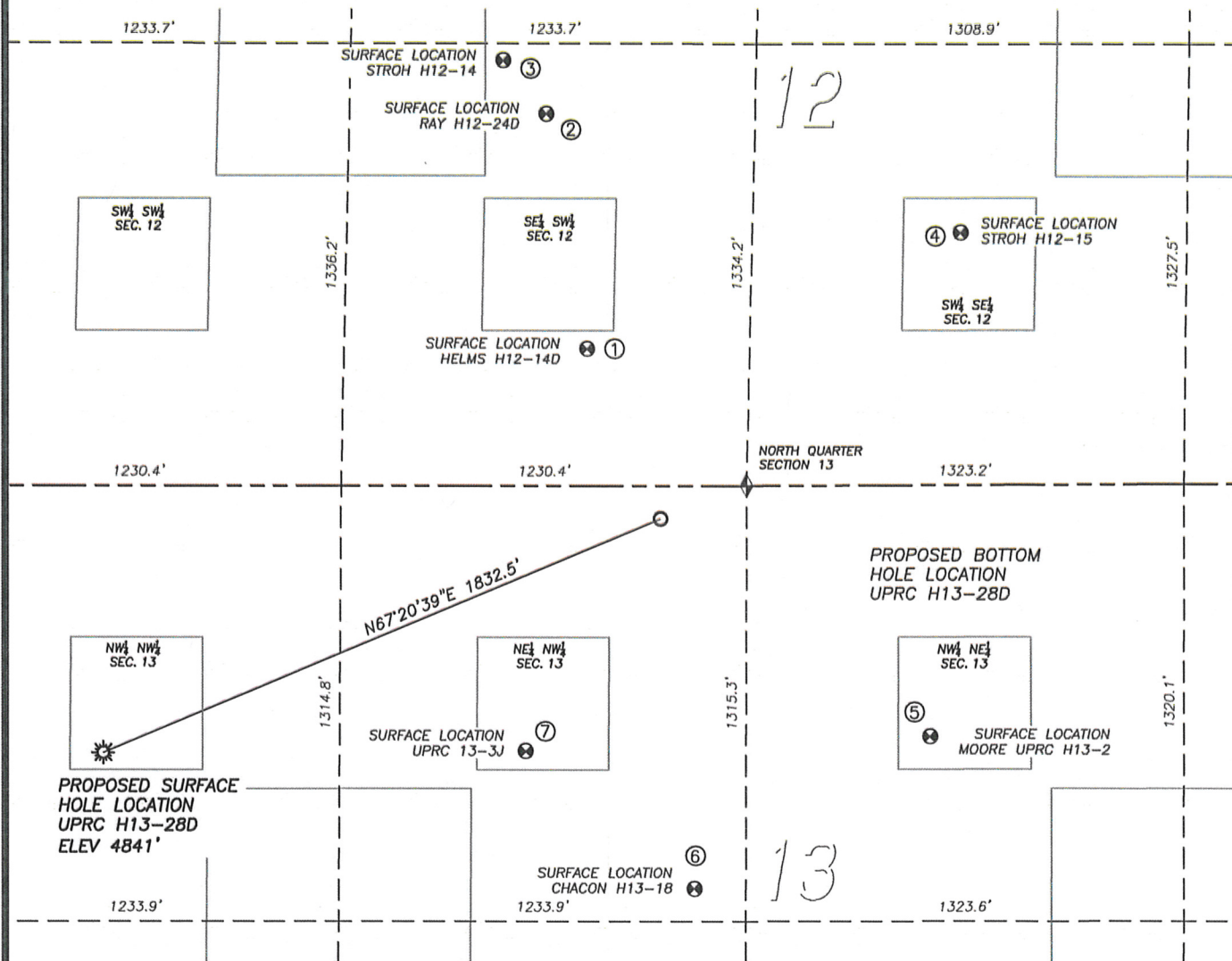
NOTICE: According to Colorado law you MUST commence any legal action based upon any defect in this W.L.C. within three years after you first discover such defect. In no event may any action based upon any such defect in this W.L.C. be commenced more than ten years from the date of the certification shown herein.



FOR AND ON BEHALF OF
 DALEY LAND SURVEYING, INC.,
 Robert Daley, PLS 35597

SITE SKETCH UPRC H13-28D

SECTION 13, TOWNSHIP 3 NORTH, RANGE 65 WEST OF THE 6TH PRINCIPAL MERIDIAN



①

HELMS H12-14D

SE/SW SEC. 12
413' FSL, 1968' FWL
558' NW OF PROPOSED
BOTTOM HOLE LOCATION
LAT. N40.23357°
LONG. W104.61380°
EL: 4858'
PDOP 1.4

②

RAY H12-24D

SE/SW SEC. 12
1122' FSL, 1831' FWL
1270' NW OF PROPOSED
BOTTOM HOLE LOCATION
LAT. N40.23552°
LONG. W104.61424°
EL: 4857'
PDOP 1.4

③

STROHM H12-14

SE/SW SEC. 12
1283' FSL, 1696' FWL
1463' NW OF PROPOSED
BOTTOM HOLE LOCATION
LAT. N40.23596°
LONG. W104.61473°
EL: 4857'
PDOP 1.9

④

STROHM H12-15

SW/SE SEC. 12
760' FSL, 1999' FEL
1257' NE OF PROPOSED
BOTTOM HOLE LOCATION
LAT. N40.23454°
LONG. W104.60974°
EL: 4867'
PDOP 1.4

⑤

MOORE UPRC H13-2

NW/NE SEC. 13
759' FNL, 2090' FEL
1045' SE OF PROPOSED
BOTTOM HOLE LOCATION
LAT. N40.23037°
LONG. W104.61009°
EL: 4852'
PDOP 1.6

⑥

CHACON H13-18

NE/NW SEC. 13
1217' FNL, 2311' FWL
1121' S OF PROPOSED
BOTTOM HOLE LOCATION
LAT. N40.22910°
LONG. W104.61265°
EL: 4856'
PDOP 1.4

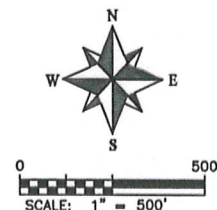
⑦

UPRC 13-3J

NE/NW SEC. 13
802' FNL, 1797' FWL
812' SW OF PROPOSED
BOTTOM HOLE LOCATION
LAT. N40.23024°
LONG. W104.61447°
EL: 4856'
PDOP 1.4

LEGEND

- ◆ FOUND MONUMENT AS DESCRIBED
- ☀ PROPOSED WELL
- ⊙ EXISTING WELL
- BOTTOM HOLE
- ⊗ ABANDONED WELL



NOTES:
1. THIS DOES NOT REPRESENT A BOUNDARY SURVEY
2. HORIZONTAL DATUM IS NAD83
3. VERTICAL DATUM IS NAVD88 AND ORIGINATES FROM
LOCAL C.O.R.S. STATIONS, UTILIZING THE GEOID09 MODEL