



<<< Fold Here >>>

### Comments

Wet canyon, seventh left after fire station (Morrison Ridge sign on right side of road by mail boxes),  
go over yellow cattle guard, stay straight, drive past the lightning location,  
next right, go thru double green gates, drive past A frame cabin, drive thru double green gates,  
at Y Stay left, stay on road, dead end on location.

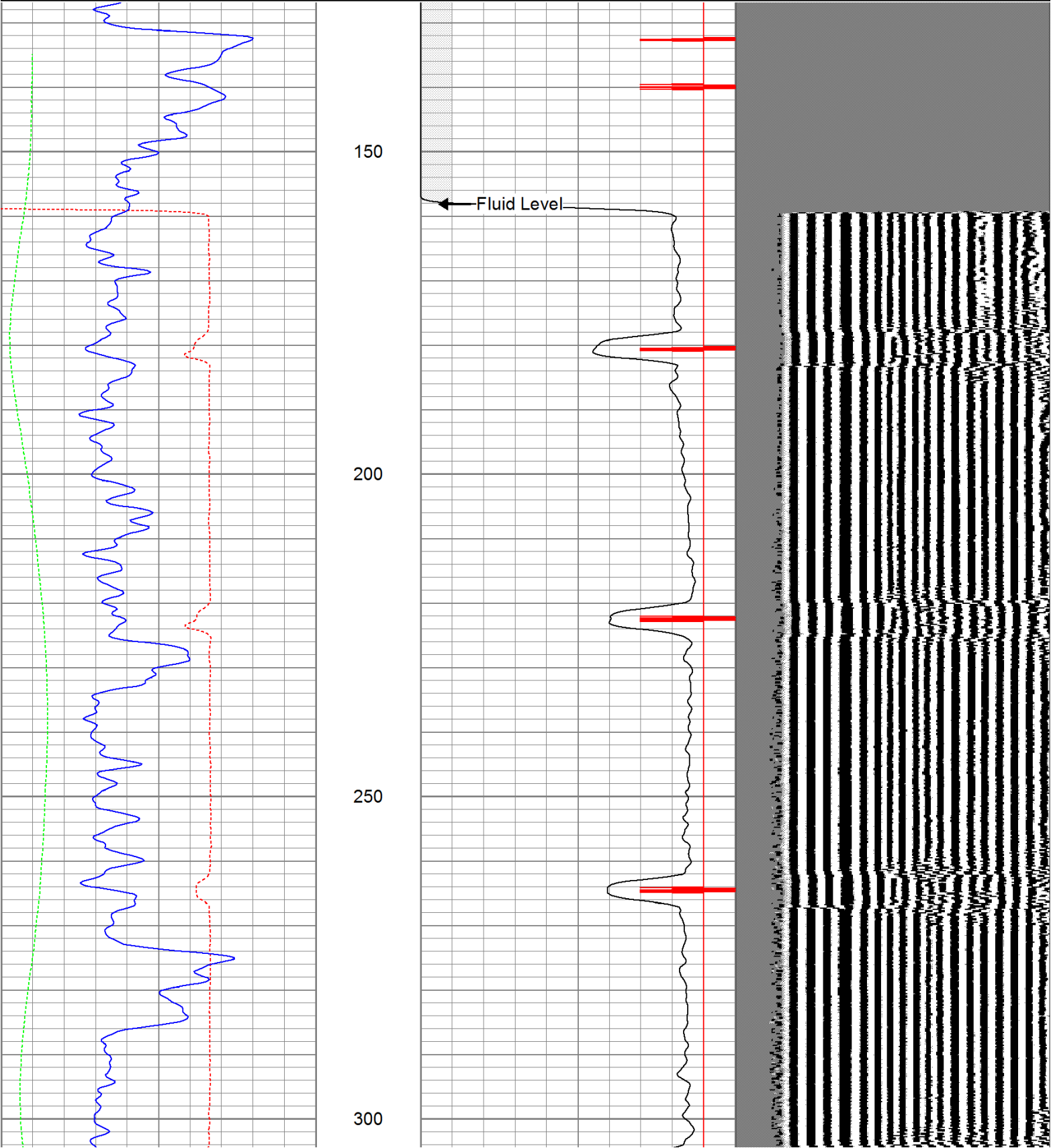


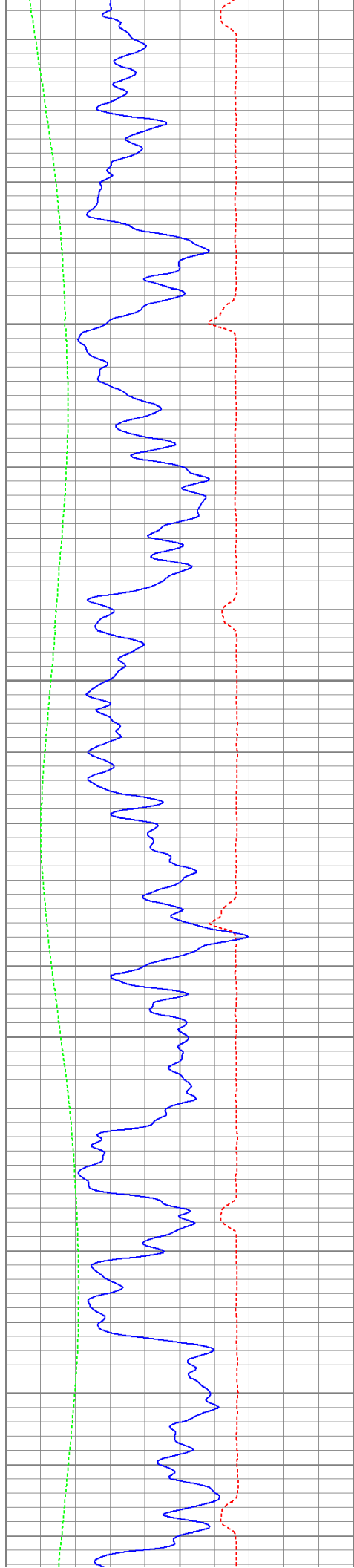
Database File: cedar82411b.db  
Dataset Pathname: pass2  
Presentation Format: cbldig  
Dataset Creation: Wed Aug 24 09:37:14 2011 by Log Open-Cased 110302  
Charted by: Depth in Feet scaled 1:240

|     |                    |     |
|-----|--------------------|-----|
| 400 | Travel Time (usec) | 200 |
| 0   | GR (GAPI)          | 200 |
| 0   | DEVI (°)           | 10  |

|   |                |     |
|---|----------------|-----|
| 0 | Amplitude (mV) | 100 |
| 9 | Collar Locator | -1  |

200 Variable Density 1200



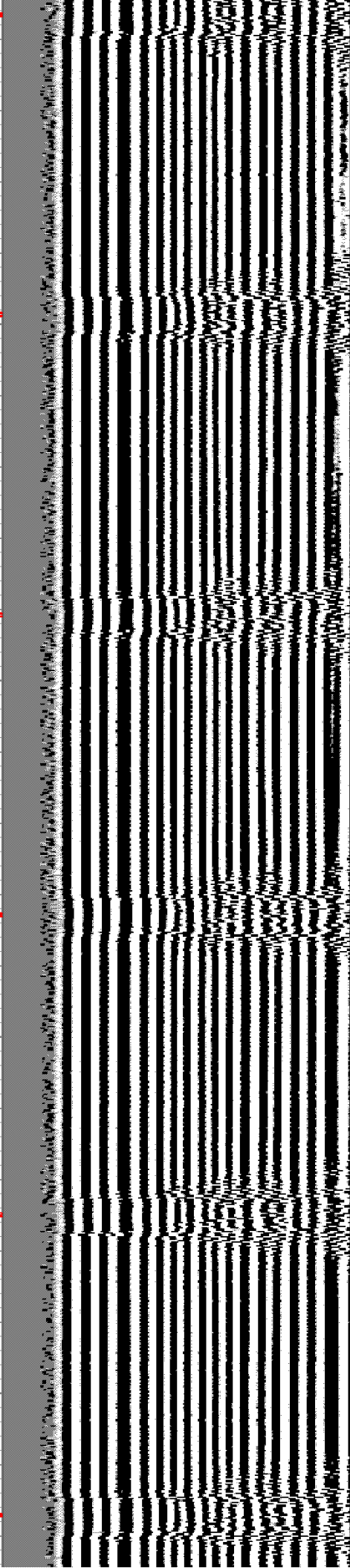
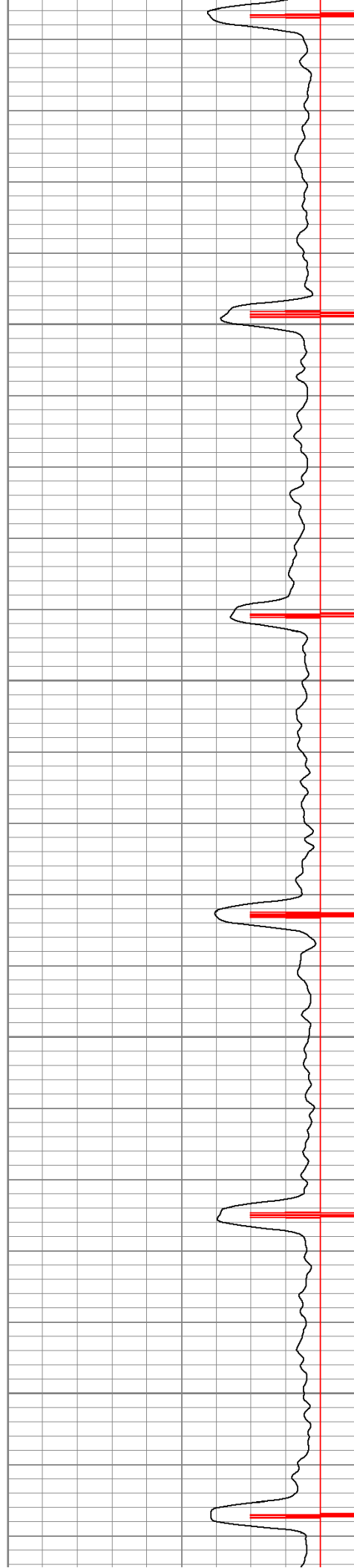


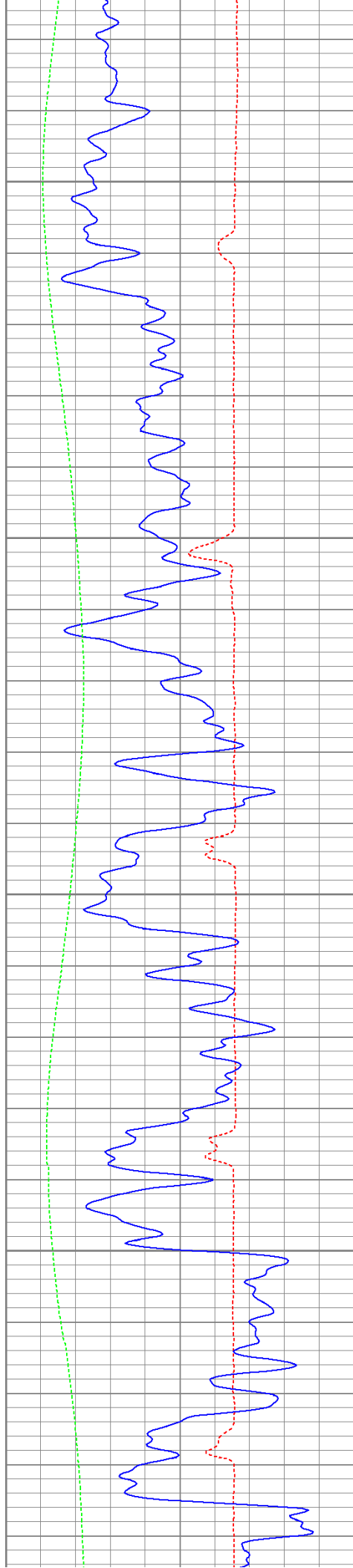
350

400

450

500



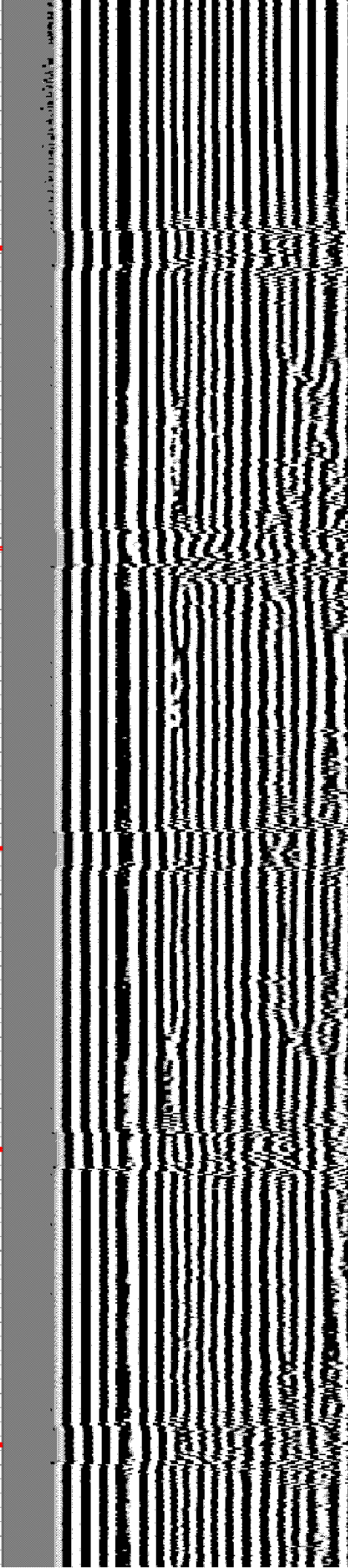
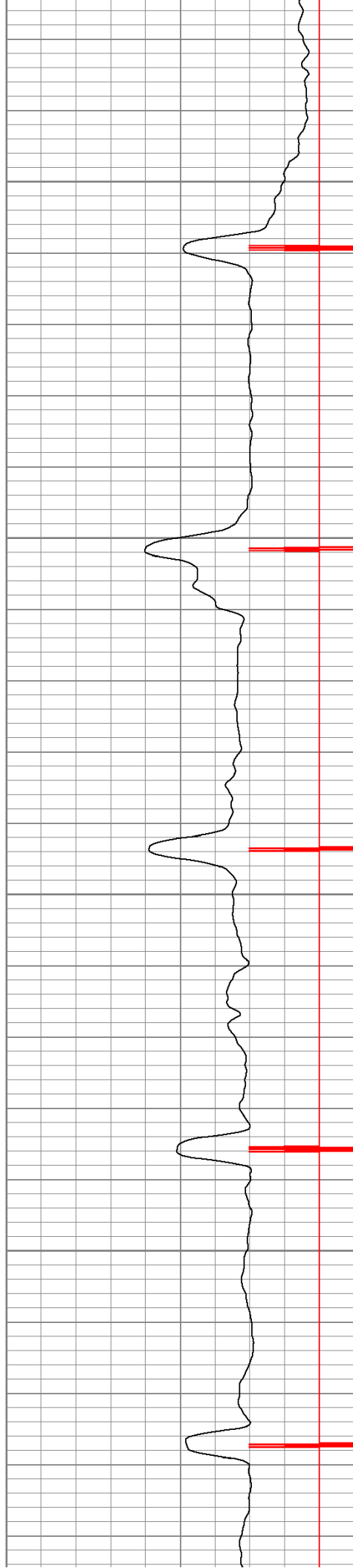


550

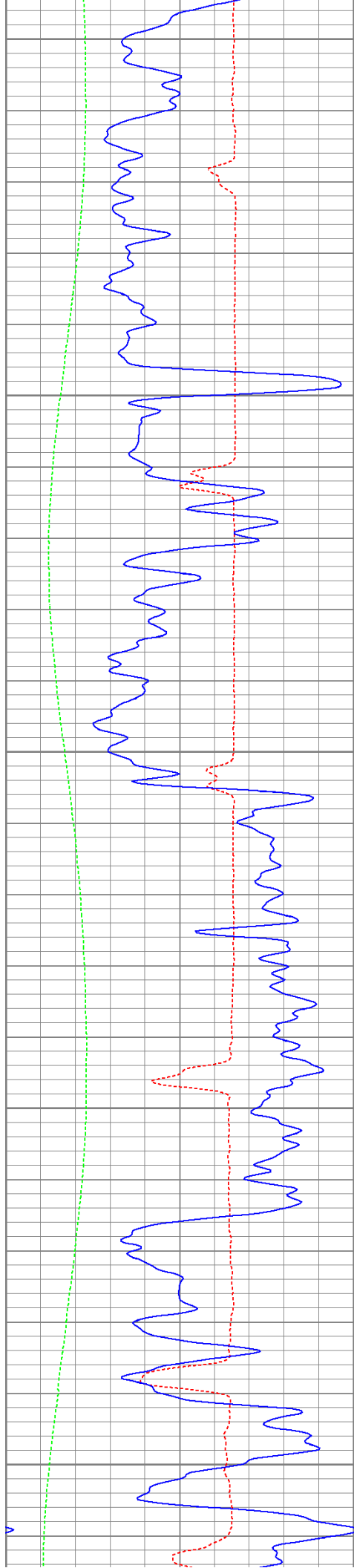
600

650

700







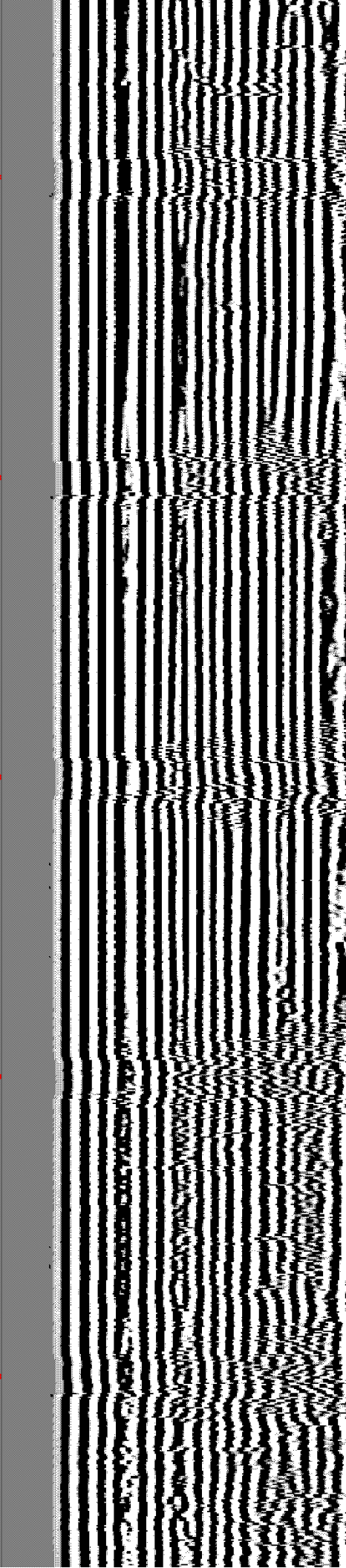
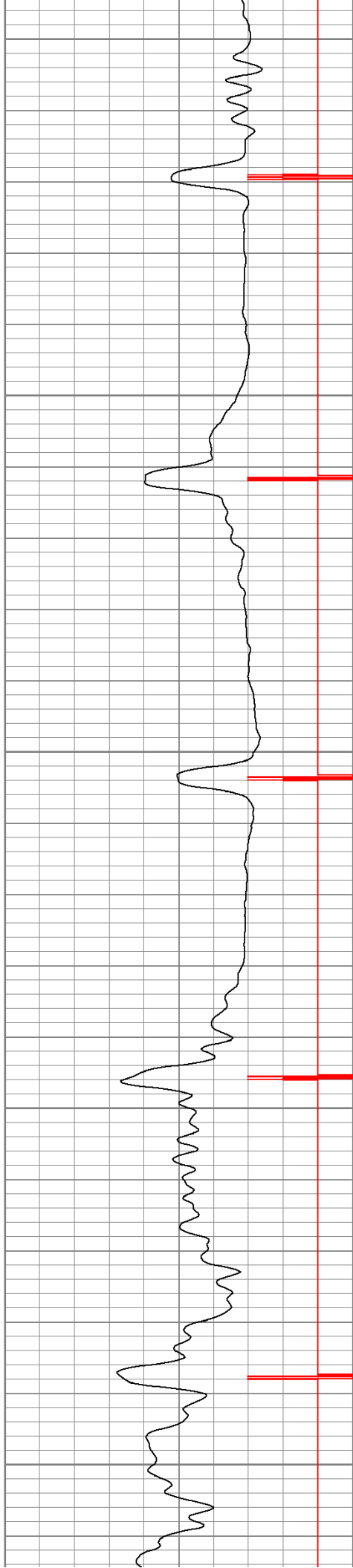
750

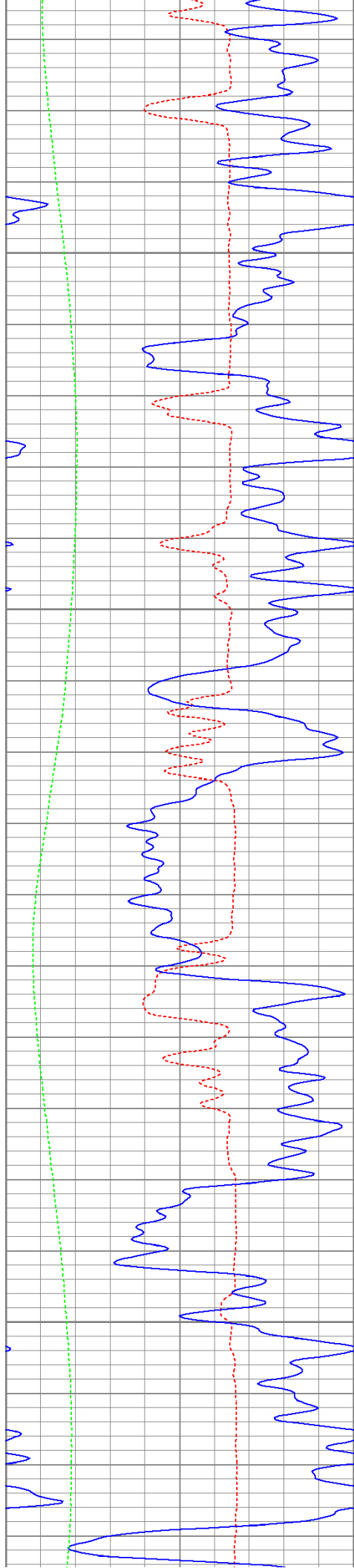
800

850

900

950



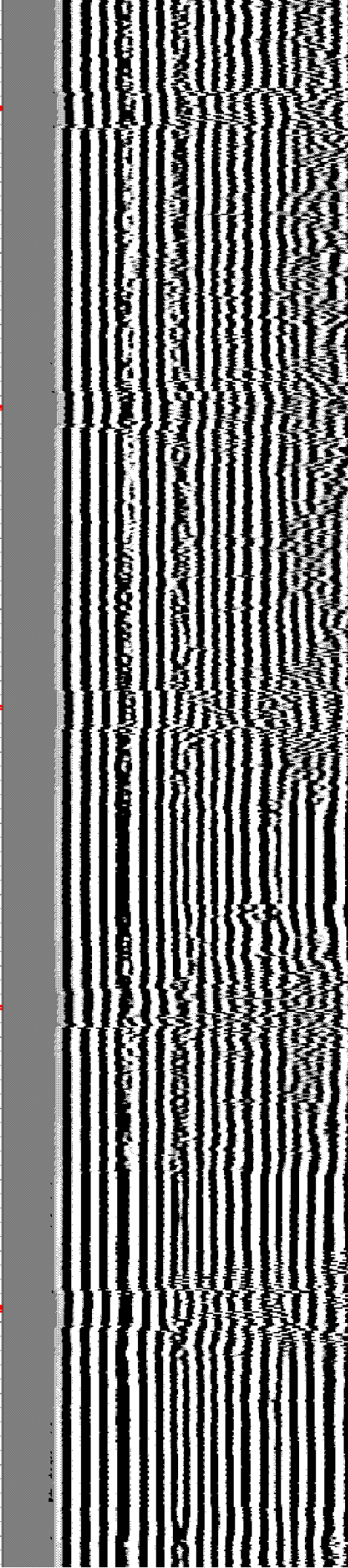
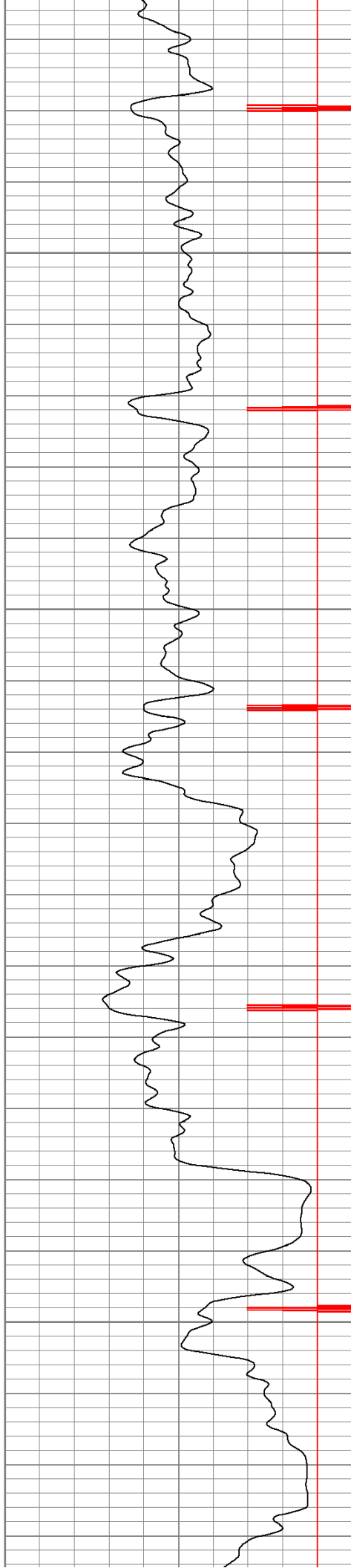


1000

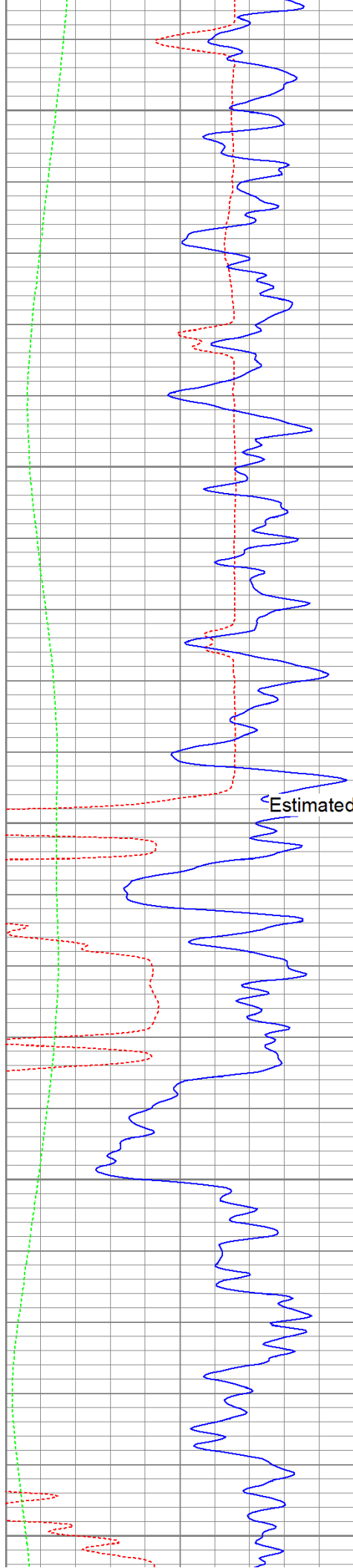
1050

1100

1150







1200

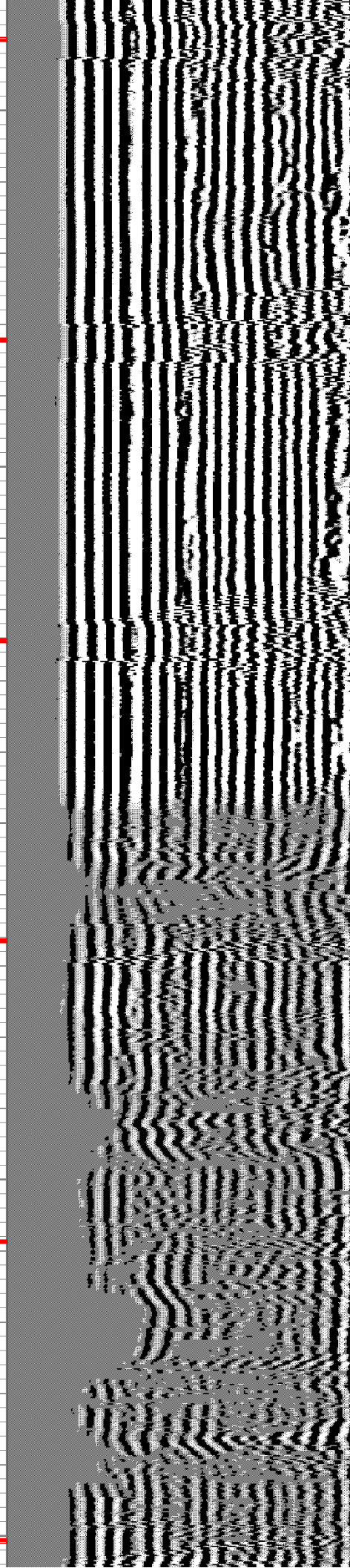
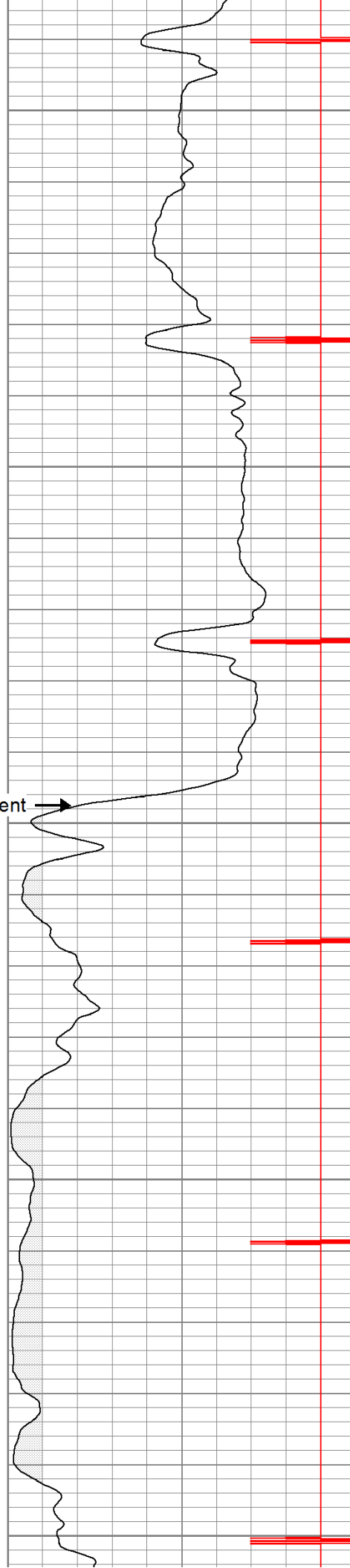
1250

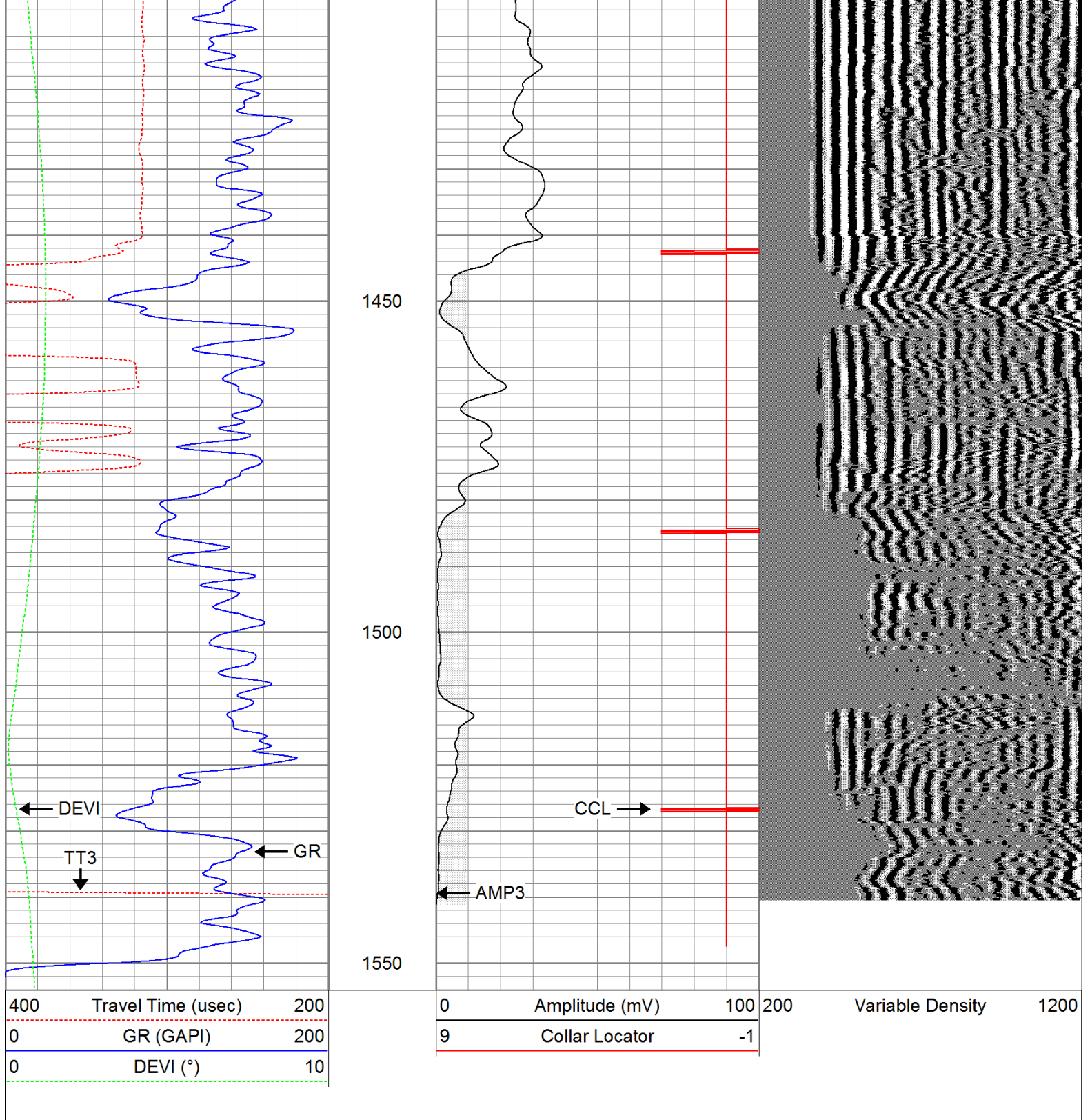
Estimated Top of Cement →

1300

1350

1400





# Repeat Pass

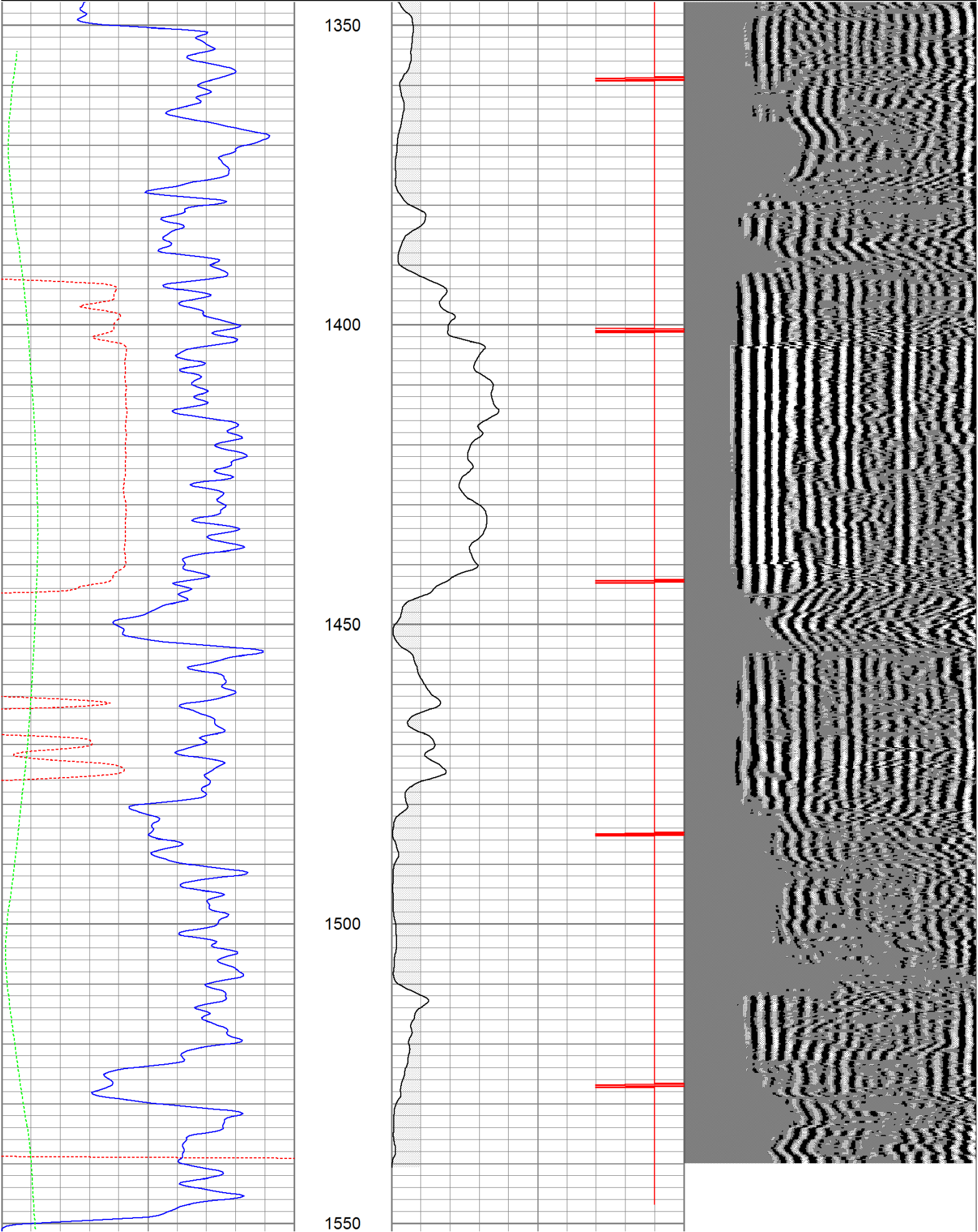
Database File: cedar82411b.db  
Dataset Pathname: pass1  
Presentation Format: cbldig  
Dataset Creation: Wed Aug 24 09:28:19 2011 by Log Open-Cased 110302  
Charted by: Depth in Feet scaled 1:240





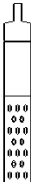
|   |           |     |
|---|-----------|-----|
| 0 | GR (GAPI) | 200 |
| 0 | DEVI (°)  | 10  |

|   |                |    |
|---|----------------|----|
| 9 | Collar Locator | -1 |
|---|----------------|----|



|     |                    |     |   |                |     |     |                  |      |
|-----|--------------------|-----|---|----------------|-----|-----|------------------|------|
| 400 | Travel Time (usec) | 200 | 0 | Amplitude (mV) | 100 | 200 | Variable Density | 1200 |
| 0   | GR (GAPI)          | 200 | 9 | Collar Locator | -1  |     |                  |      |
| 0   | DEVI (°)           | 10  |   |                |     |     |                  |      |

| Calibration Report                 |   |             |            |    |           |     |
|------------------------------------|---|-------------|------------|----|-----------|-----|
| Database File:                     | cedar82411b.db                                    |             |            |    |           |     |
| Dataset Pathname:                  | pass1   |             |            |    |           |     |
| Dataset Creation:                  | Wed Aug 24 09:28:19 2011 by Log Open-Cased 110302 |             |            |    |           |     |
| Gamma Ray Calibration Report       |   |             |            |    |           |     |
| Serial Number:                     | 080616  |             |            |    |           |     |
| Tool Model:                        | 275D_INC  |             |            |    |           |     |
| Performed:                         | Mon Aug 22 07:24:58 2011                          |             |            |    |           |     |
| Calibrator Value:                  | 200.0   | GAPI        |            |    |           |     |
| Background Reading:                | 50.0  | cps         |            |    |           |     |
| Calibrator Reading:                | 250.0   | cps         |            |    |           |     |
| Sensitivity:                       | 1.0000  | GAPI/cps    |            |    |           |     |
| Inclinometer Calibration Report    |   |             |            |    |           |     |
| Performed:                         | Mon Aug 22 07:25:54 2011                          |             |            |    |           |     |
|                                    | Low Read.   | High Read.  | Low Ref.   |    | High Ref. |     |
| X Accelerometer                    | -3585.20  | 3595.40     | -1.00      |    | 1.00      | gee |
| Y Accelerometer                    | -3619.40  | 3520.00     | -1.00      |    | 1.00      | gee |
| Z Accelerometer                    |   |             |            |    |           |     |
| Cement Bond Log Calibration Report |   |             |            |    |           |     |
| Serial Number:                     | 081024  |             |            |    |           |     |
| Tool Model:                        | PROBEDIGITALCBL                                   |             |            |    |           |     |
| Performed:                         | Mon Aug 22 07:24:34 2011                          |             |            |    |           |     |
| Depth:                             | 138.299   | ft          |            |    |           |     |
| Casing Diameter:                   | 5.5   | in          |            |    |           |     |
|                                    | 3' Spacing  |             | 5' Spacing |    |           |     |
| Signal Zero:                       | 0   | 0           |            | mV |           |     |
| Calibrated Amplitude:              | 85  | 85          |            | mV |           |     |
| Reading at Signal Zero:            | -0.00625  | -0.00703125 |            | V  |           |     |
| Reading in Free Pipe:              | 1.56453   | 1.18582     |            | V  |           |     |
| Gain:                              | 54.1134   | 71.2581     |            |    |           |     |
| Offset:                            | 0.338209  | 0.501034    |            |    |           |     |

| Sensor | Offset (ft) | Schematic   | Description | Len (ft) | OD (in) | Wt (lb) |
|--------|-------------|---|-------------|----------|---------|---------|
|        |             |  | None        | 0.75     | 1.50    | 5.00    |

|  |       |  |                                |      |      |        |  |
|--|-------|--|--------------------------------|------|------|--------|--|
| WVF3   | 14.75 |  | CBL-PROBEDIGITALCBL (081024)   | 8.75 | 2.75 | 106.50 |  |
| WVF5   | 13.75 |  | PROBE DIGITAL CBL              |      |      |        |  |
|  |       |  | X                              | 3.00 | 1.69 | 25.00  |  |
| CCL  | 6.50  |  |                                |      |      |        |  |
| ACCX   | 4.83  |  | GR-275D_INC (080616)           | 4.50 | 2.75 | 50.00  |  |
| ACCY   | 4.83  |  | 2-3/4" GR-CCL with Inclination |      |      |        |  |
| ACCZ   | 4.83  |  |                                |      |      |        |  |
| GR   | 3.83  |  | X                              | 3.00 | 1.69 | 25.00  |  |
| Dataset: cedar82411b.db: field/well/run1/pass1 |       |  |                                |      |      |        |  |
| Total Length: 20.00 ft                         |       |  |                                |      |      |        |  |
| Total Weight: 211.50 lb                        |       |  |                                |      |      |        |  |
| O.D.: 2.75 in                                  |       |  |                                |      |      |        |  |