

# Cement Bond log

Company Pioneer Natural Resources  
Well Cedar 31-19  
Field Purgatoire River  
County Las Animas  
State colorado

Company Pioneer Natural Resources  
Well Cedar 31-19  
Field Purgatoire River  
County Las Animas  
State colorado

Location: API #: 050710971400

SEC 19 TWP 32S RGE 67W

Permanent Datum Grond level Elevation 8151'  
Log Measured From Kelly Bushing 4' AGL  
Drilling Measured From Kelly bushing

Other Services  
Elevation  
K.B. 8155'  
D.F.  
G.L. 8151'

Date	08-22-11									
Run Number										
Depth Driller	3314'									
Depth Logger	1645									
Bottom Logged Interval	1641									
Top Log Interval	200'									
Open Hole Size	7 7/8									
Type Fluid	Water									
Density / Viscosity	///									
Max. Recorded Temp.	///									
Estimated Cement Top	2088'									
Time Well Ready	9:00 A.M									
Time Logger on Bottom	9:40 A.M									
Equipment Number	T440									
Location	Trinidad									
Recorded By	T. Patterson									
Witnessed By	Terry Beasley									
Borehole Record					Tubing Record					
Run Number	Bit	From	To	Size	Weight	From	To			
Casing Record	Size			Wgt/Ft		Top	Bottom			
Surface String	8 5/8					00	612'			
Prot. String										
Production String	5 1/2			15.5		00	Td			
Liner										

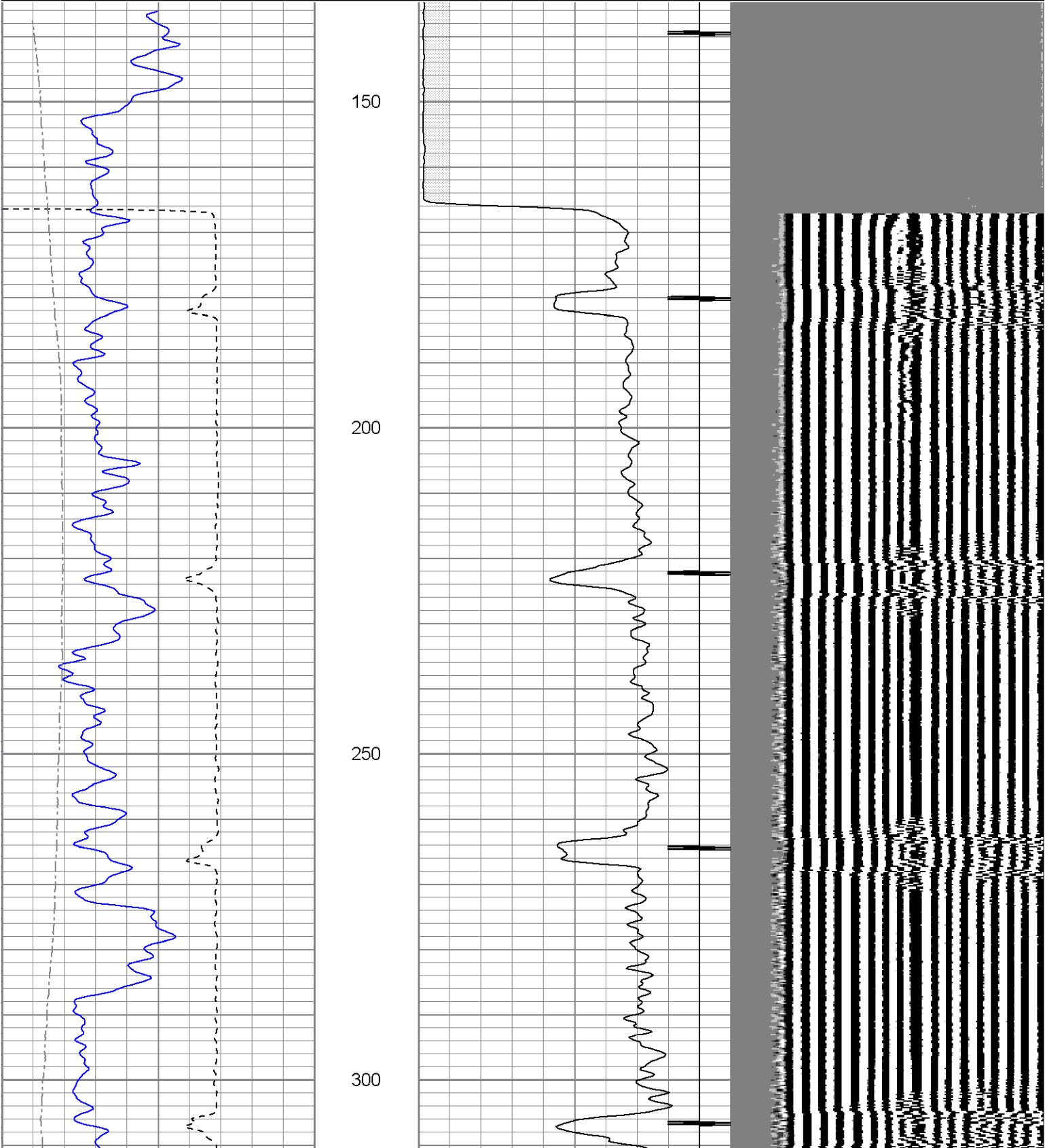
<<< Fold Here >>>

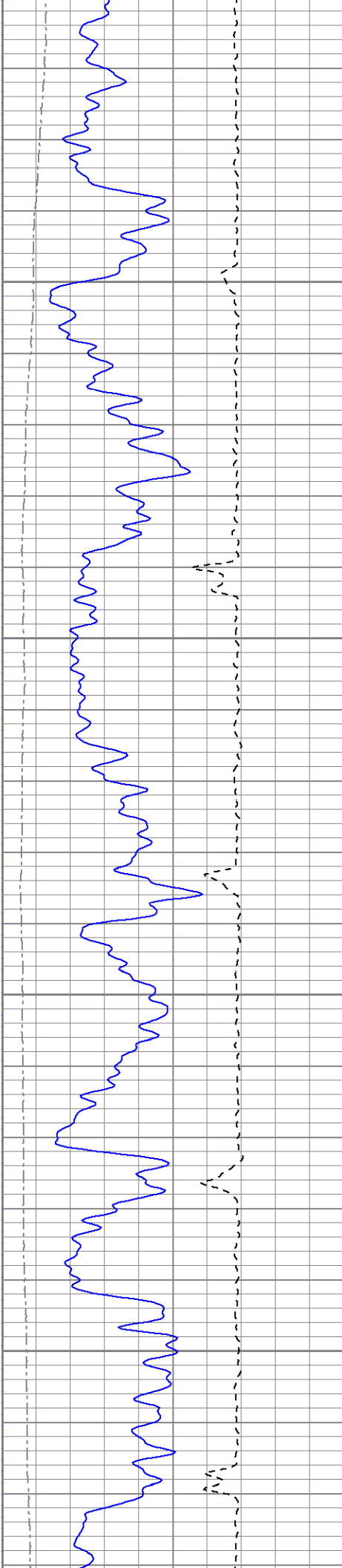
All interpretations are opinions based on inferences from electrical or other measurements and we cannot and do not guarantee the accuracy or correctness of any interpretation, and we shall not, except in the case of gross or willful negligence on our part, be liable or responsible for any loss, costs, damages, or expenses incurred or sustained by anyone resulting from any interpretation made by any of our officers, agents or employees. These interpretations are also subject to our general terms and conditions set out in our current Price Schedule.

## Comments

Database File: cedar3119b82211.db  
Dataset Pathname: pass2  
Presentation Format: cbl  
Dataset Creation: Wed Jan 01 00:23:51 2003 by Log Open-Cased 071220  
Charted by: Depth in Feet scaled 1:240

0	GR (GAPI)	200	18	CCL	-2	200	VDL	1200
200	GR (GAPI)	400	0	AMP3 (mV)	100			
400	TT3 (usec)	200						
0	DEVI (°)	10						



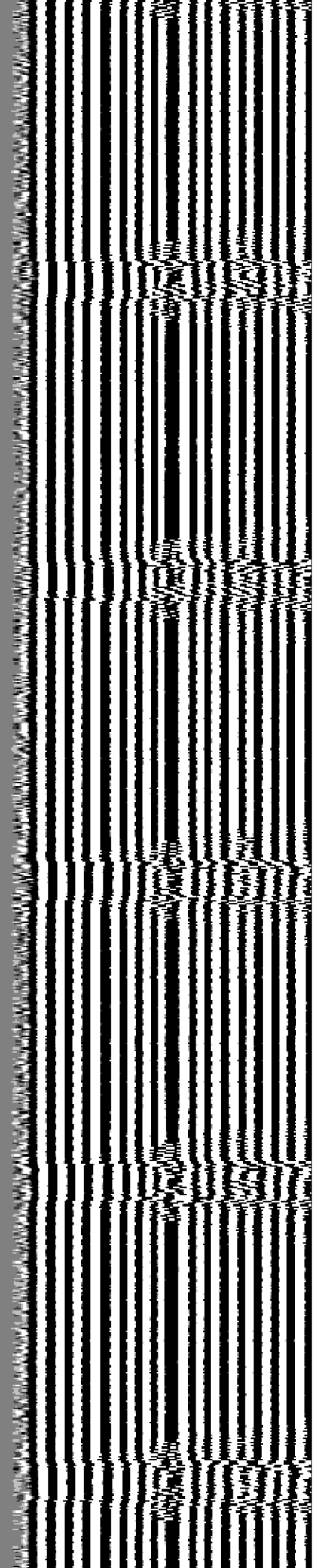
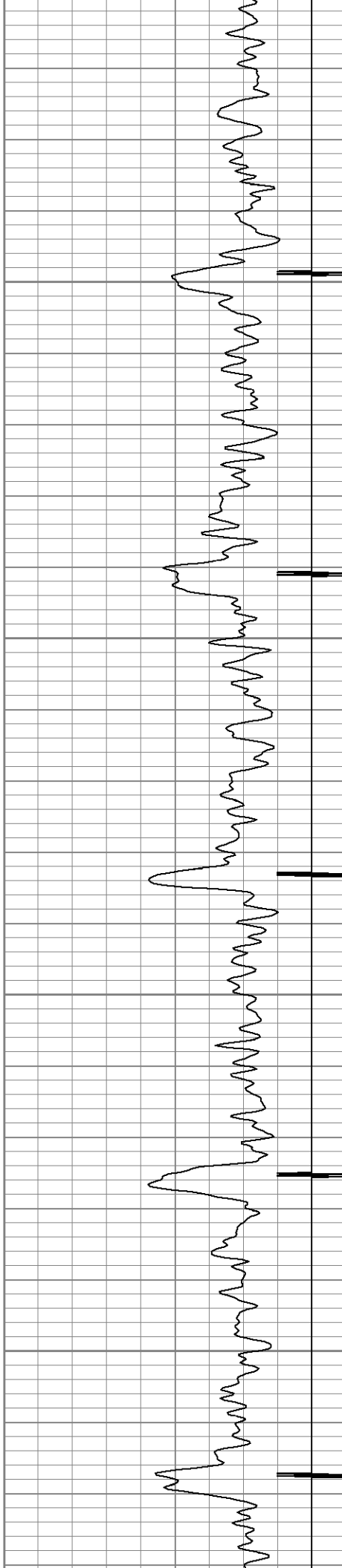


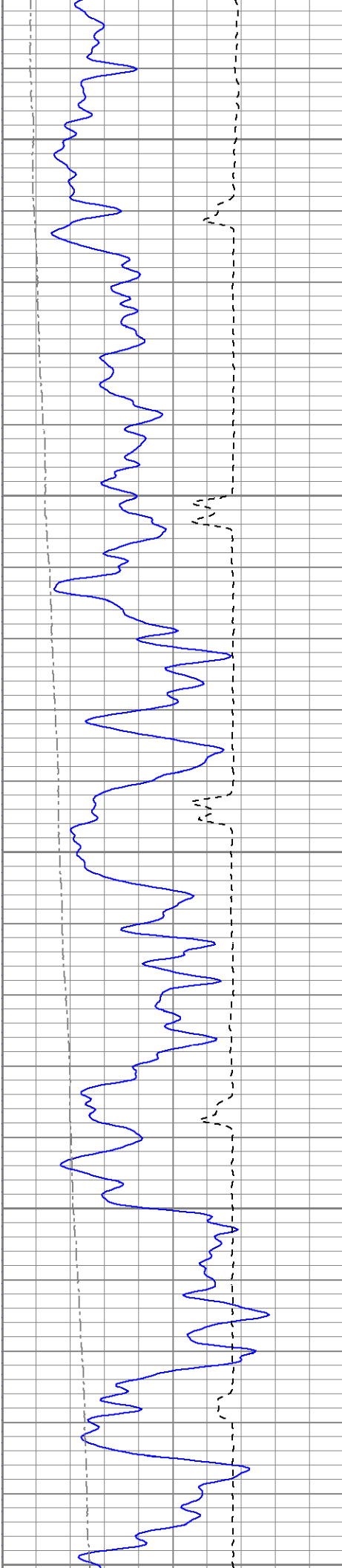
350

400

450

500





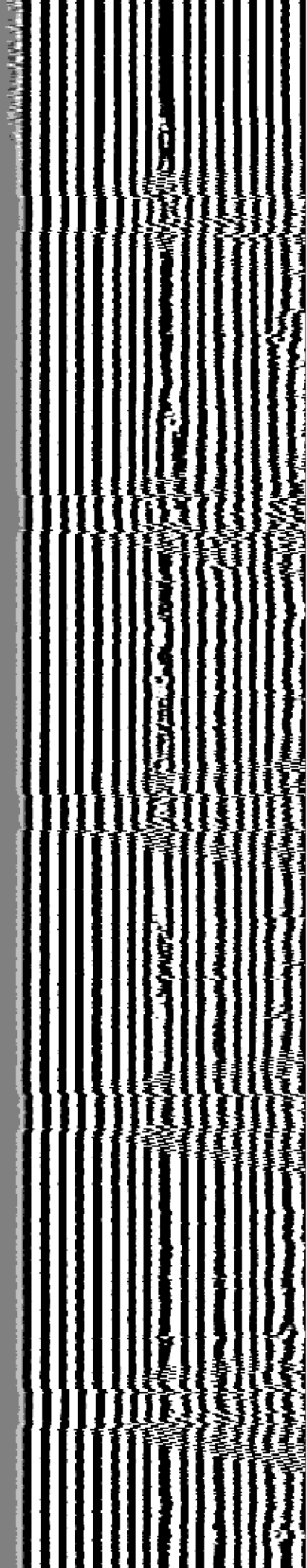
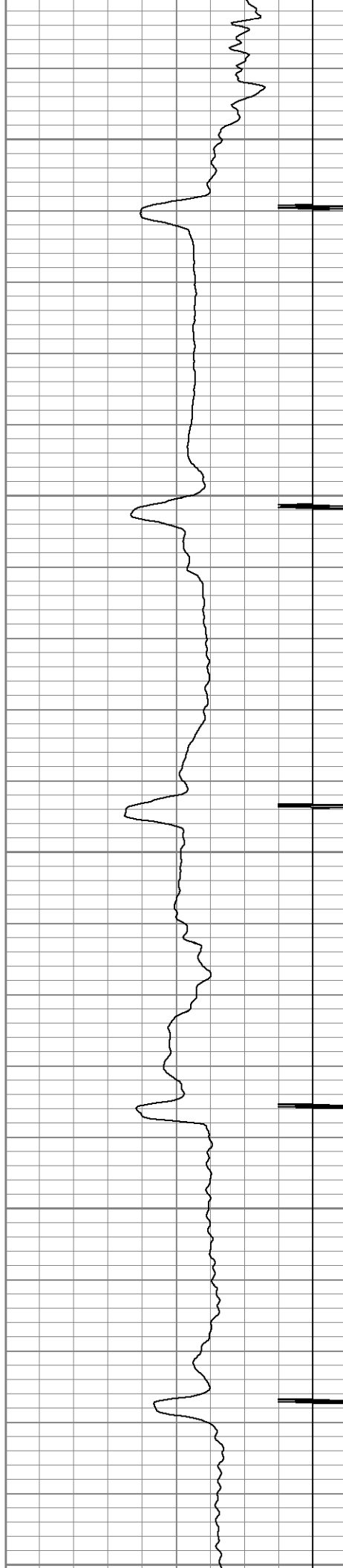
550

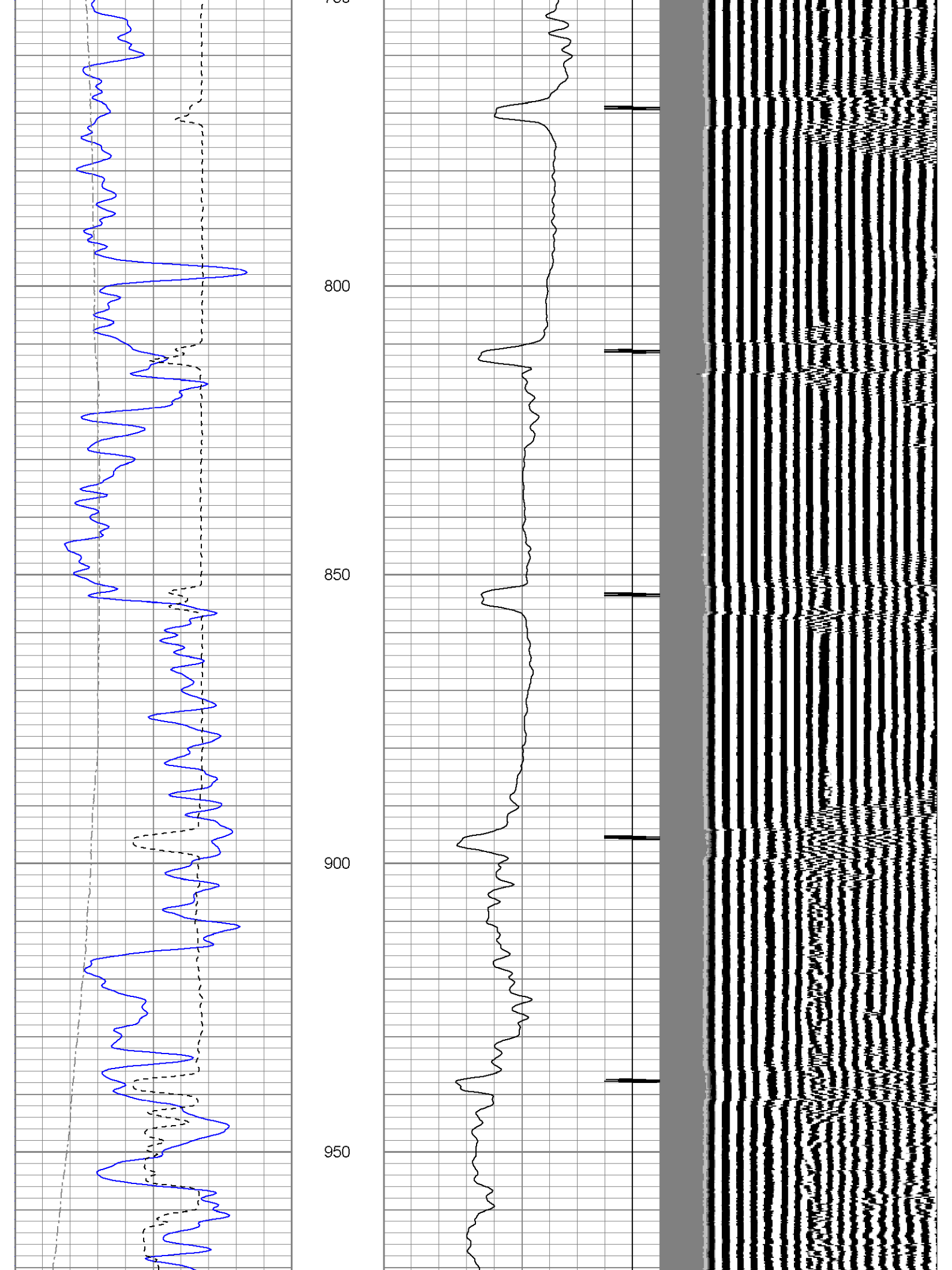
600

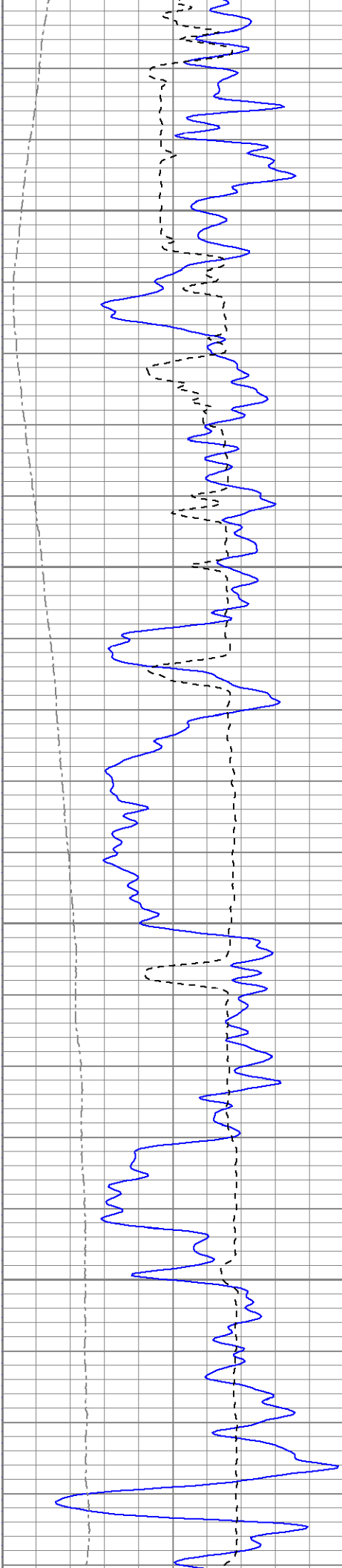
650

700

750





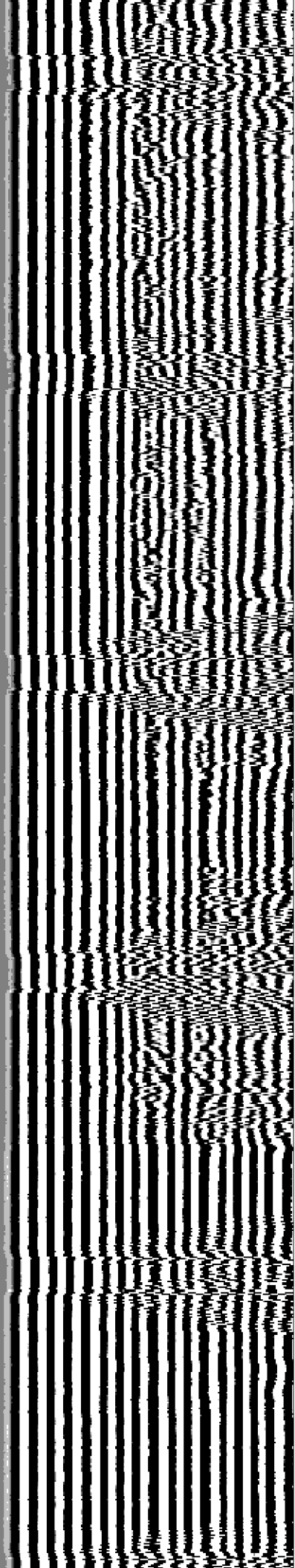
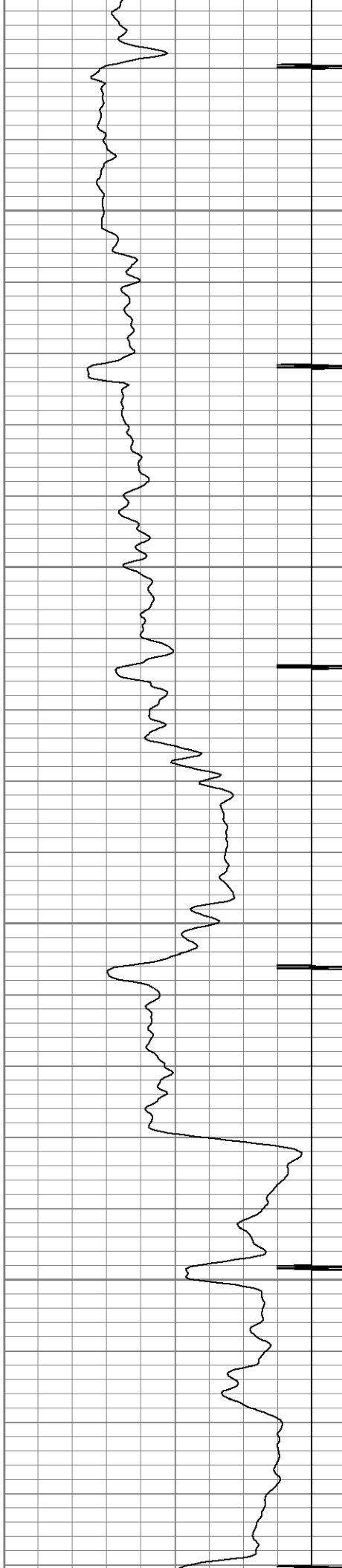


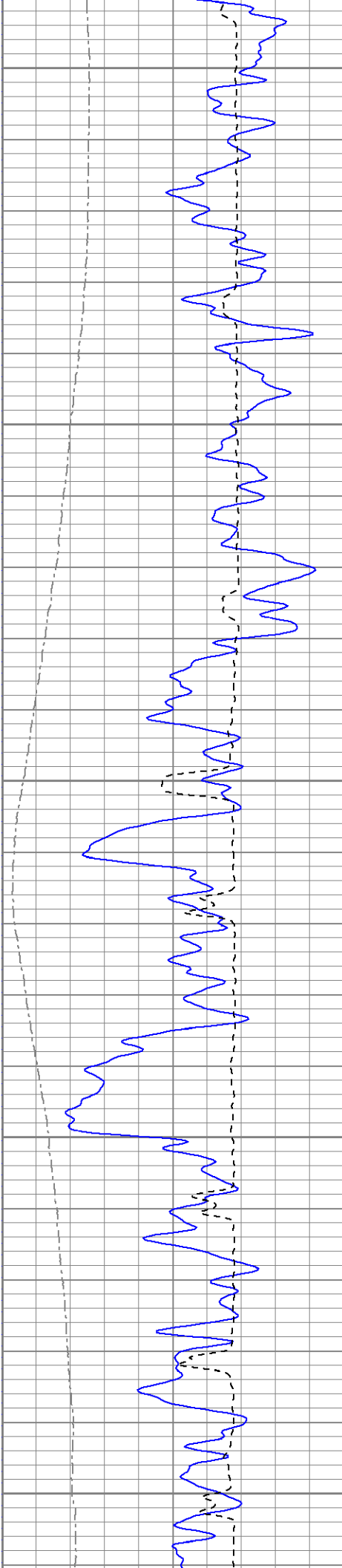
1000

1050

1100

1150





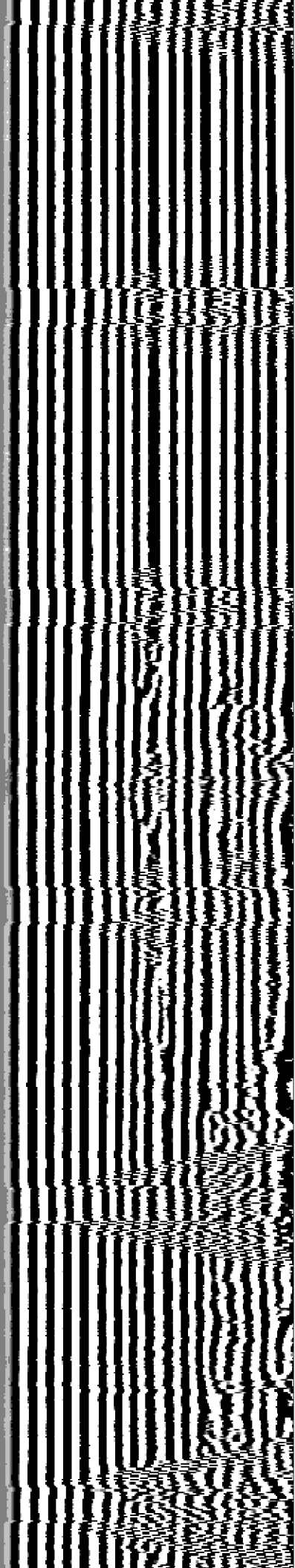
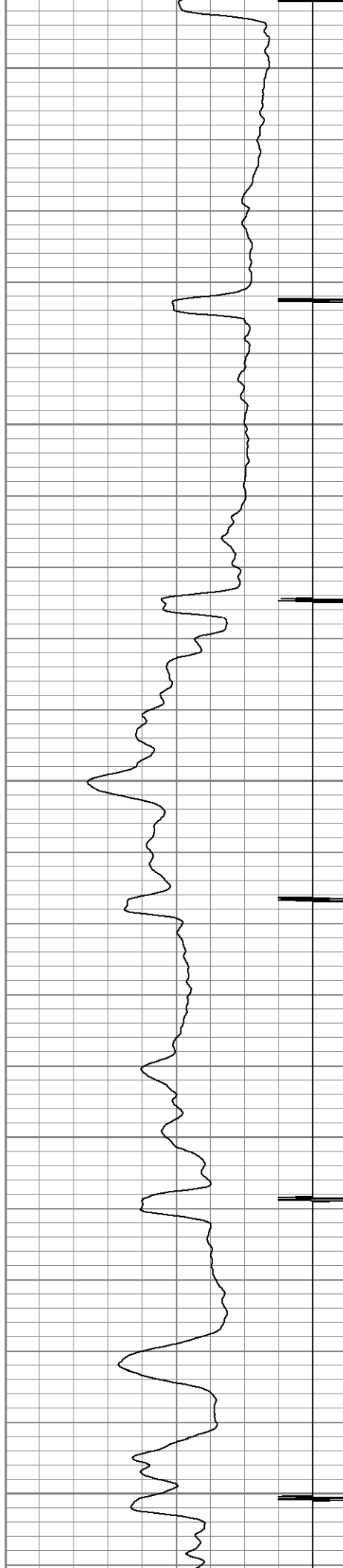
1200

1250

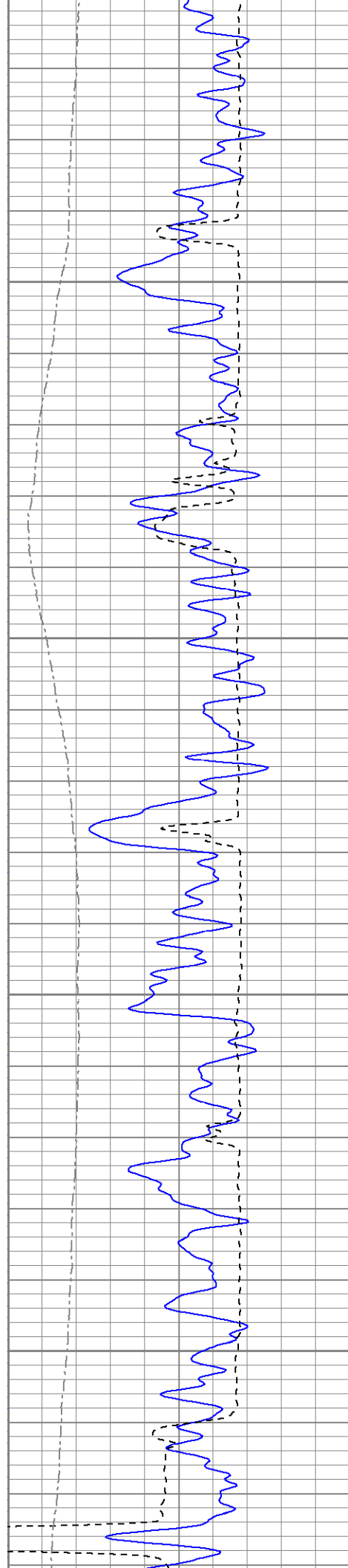
1300

1350

1400





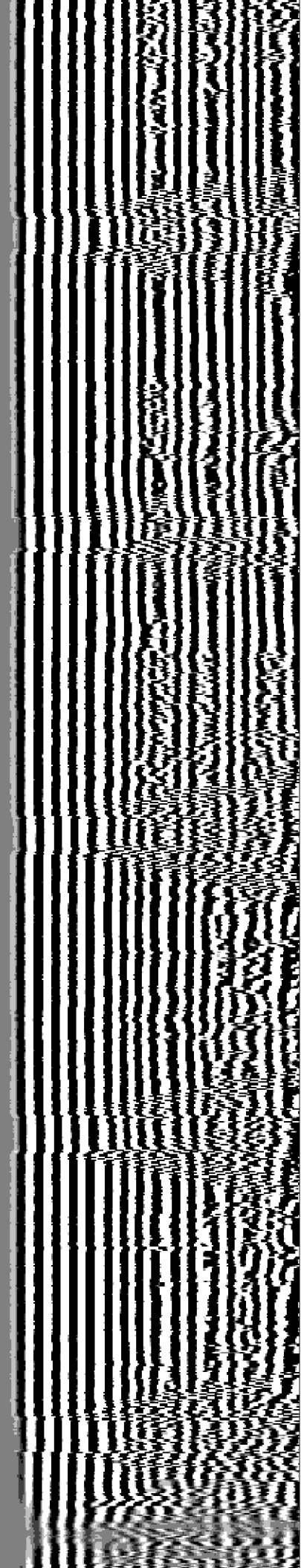


1450

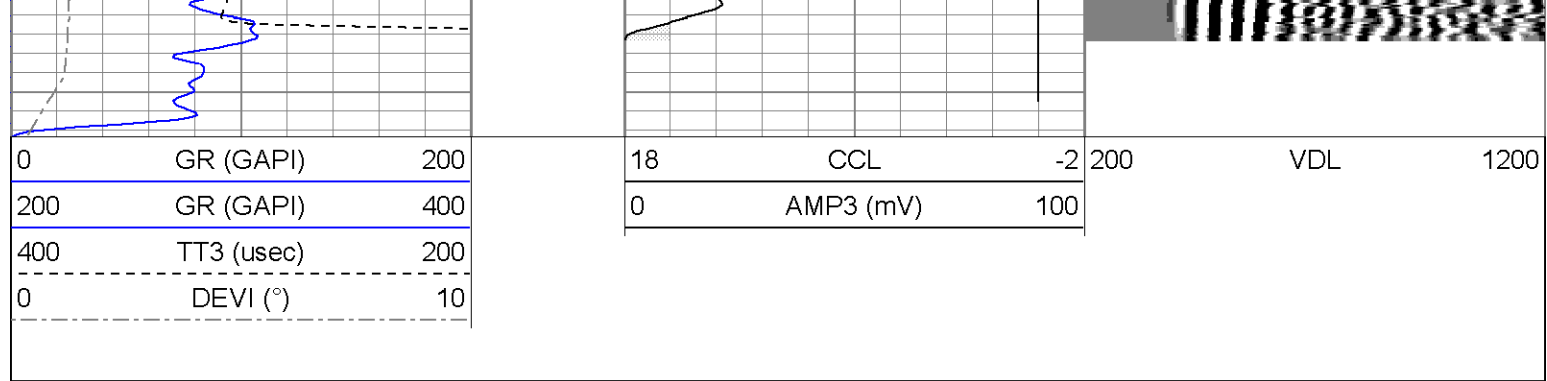
1500

1550

1600

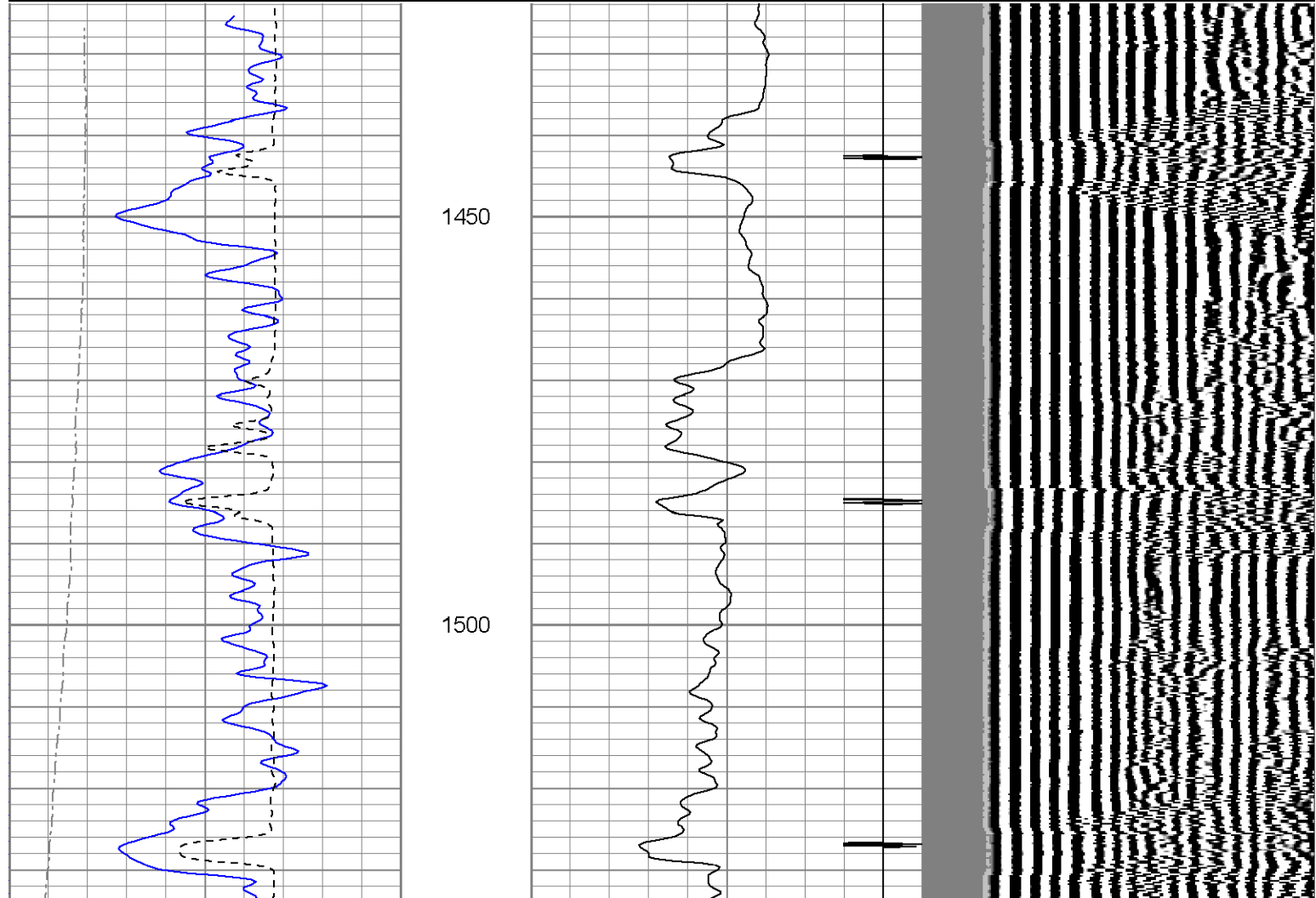
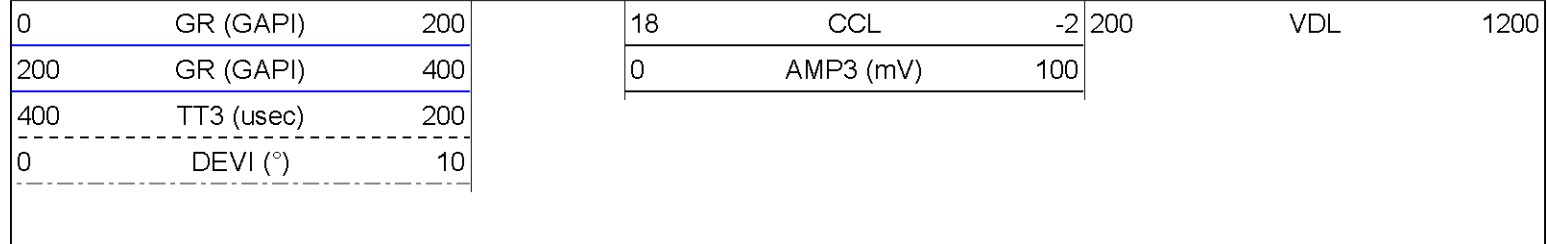


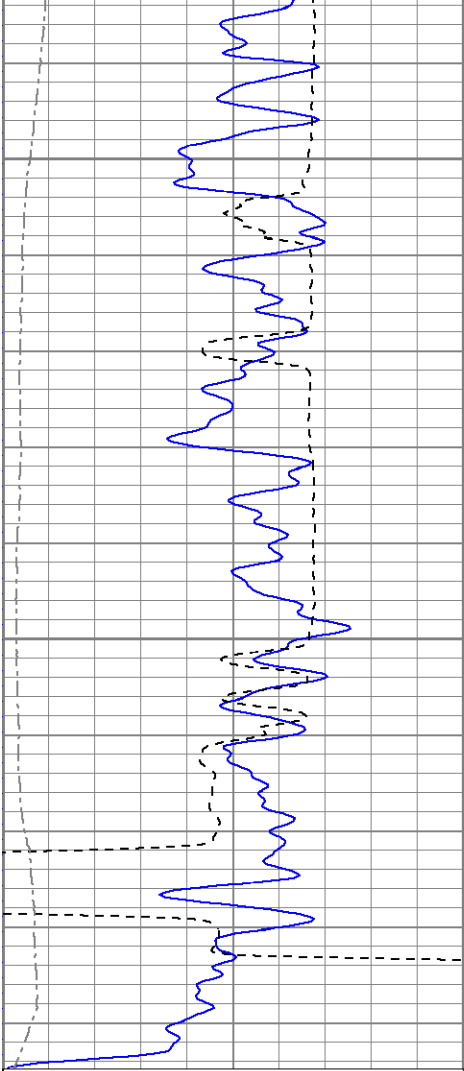




# Repeat Pass

Database File: cedar3119b82211.db  
Dataset Pathname: pass1  
Presentation Format: cbl  
Dataset Creation: Wed Jan 01 00:17:30 2003 by Log Open-Cased 071220  
Charted by: Depth in Feet scaled 1:240

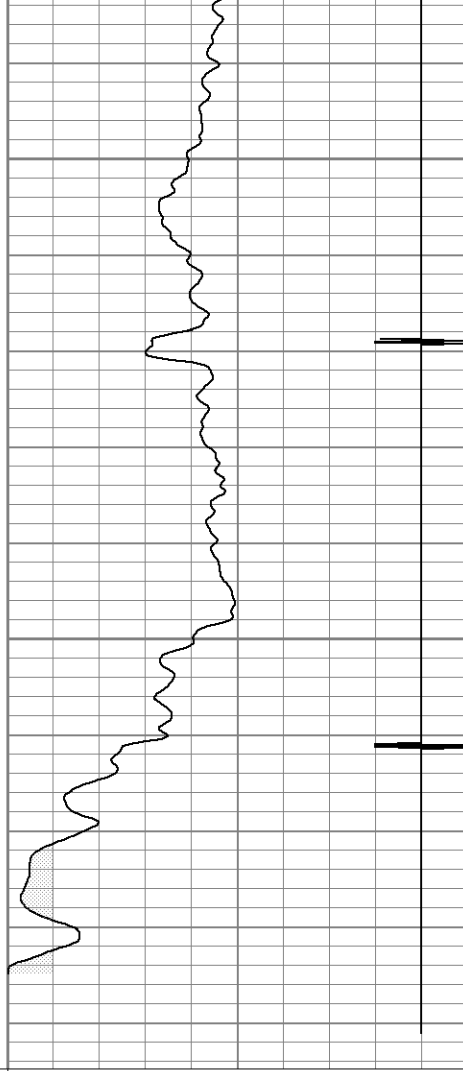




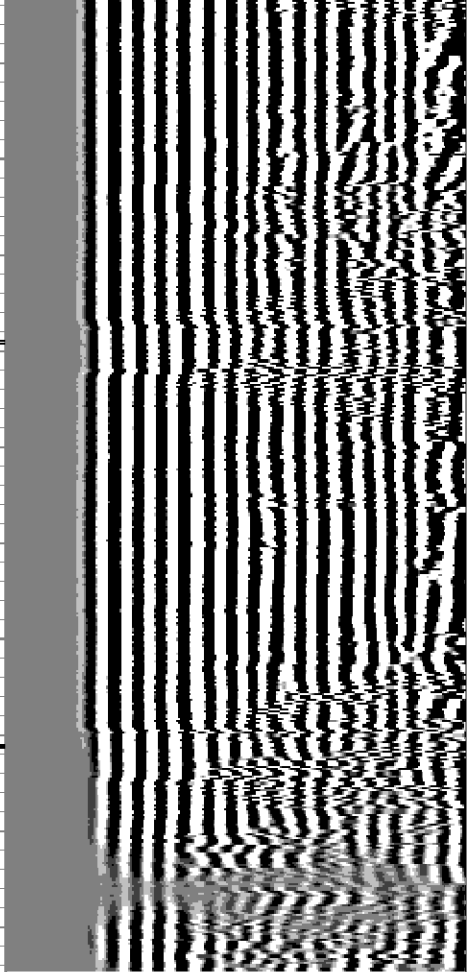
0	GR (GAPI)	200
200	GR (GAPI)	400
400	TT3 (usec)	200
0	DEVI (°)	10

1550

1600



18	CCL	-2
0	AMP3 (mV)	100



200	VDL	1200
-----	-----	------