

Company		Pioneer Natural Resources	
Well	Cedar 31-19		
Field	Purgatoire River		
County	Las Animas	State	Colorado
Location:		APL # : 05 071 09714 00	Other Services
SEC 19 TWP 32S RGE 67W		716' FNL & 2076' FEL	DEVI
Permanent Datum	Ground Level	Elevation	8151'
Log Measured From	Kelly Bushing 4' AGL	K.B. 8155'	D.F. -----
Drilling Measured From	Kelly Bushing	G.L. 8151'	
Date	8-17-11		
Run Number	ONE		
Depth Driller	3314'		
Depth Logger	1893'		
Bottom Logged Interval	1891'		
Top Log Interval	196'		
Open Hole Size	7 7/8		
Type Fluid	water		
Density / Viscosity	///		
Max. Recorded Temp.	///		
Estimated Cement Top	1346'		
Time Well Ready	R.O.A		
Time Logger on Bottom	2:00 P.M.		
Equipment Number	T590		
Location	Trinidad		
Recorded By	C. Sisneros		
Witnessed By	Mr. Micheal Polley		
Borehole Record		Tubing Record	
Run Number	Bit	From	To
Casing Record	Size	Wgt/Ft	Top Bottom
Surface String	8 5/8"		00 612'
Prot. String			
Production String	5 1/2"		00 TD
Liner			

<<< Fold Here >>>

All interpretations are opinions based on inferences from electrical or other measurements and we cannot and do not guarantee the accuracy or correctness of any interpretation, and we shall not, except in the case of gross or willful negligence on our part, be liable or responsible for any loss, costs, damages, or expenses incurred or sustained by anyone resulting from any interpretation made by any of our officers, agents or employees. These interpretations are also subject to our general terms and conditions set out in our current Price Schedule.

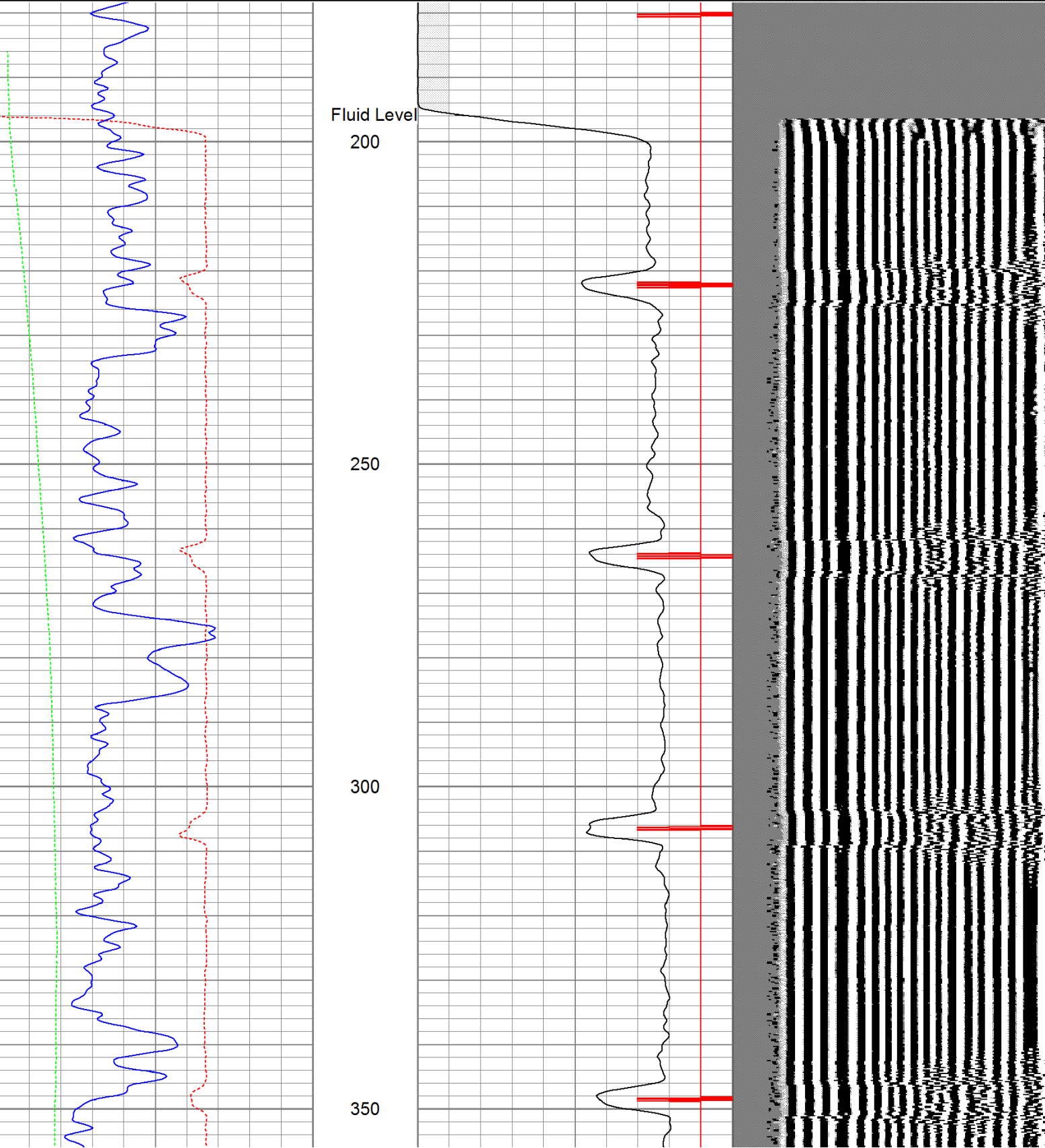
Comments

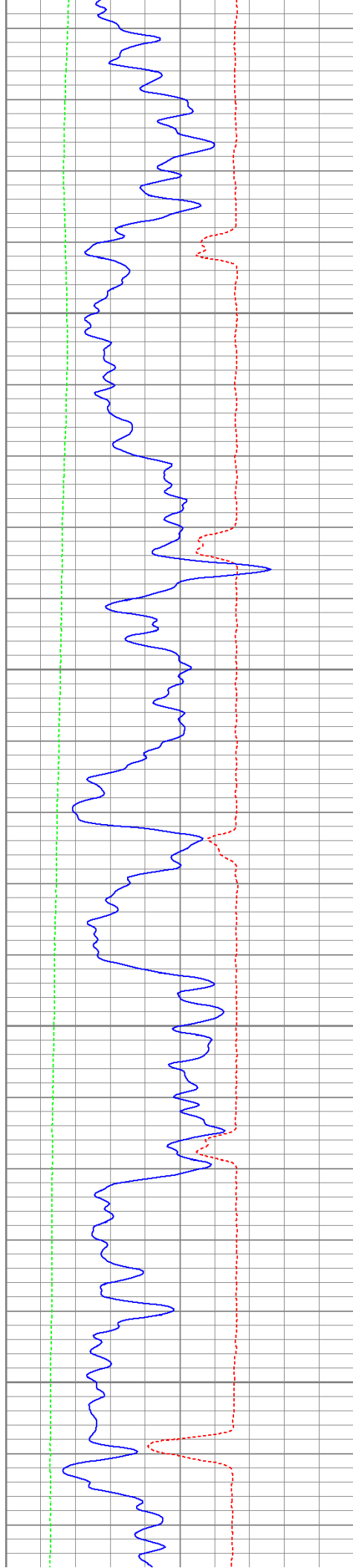
Directions:

Wet canyon, seventh left after fire station (Morrison Ridge sign on right side of road by mail boxes), go over yellow cattle gaurd, stay straight, drive past the lightning location, next right, go thru double green gates, drive past A frame cabin, drive thru double green gates, at Y Stay left, stay on road, dead end on location.

Database File: cedar81711b.db
Dataset Pathname: pass2.2
Presentation Format: cbldig
Dataset Creation: Wed Aug 17 14:47:54 2011 by Calc Open-Cased 110302
Charted by: Depth in Feet scaled 1:240

400	Travel Time (usec)	200	0	Amplitude (mV)	100	200	Variable Density	1200
0	GR (GAPI)	200	9	Collar Locator	-1			
0	DEVI (°)	10						



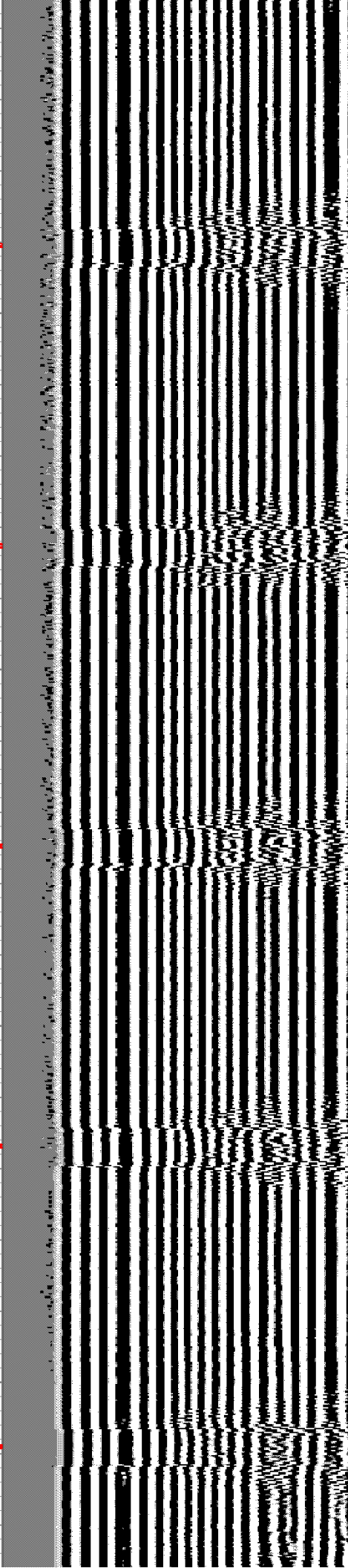


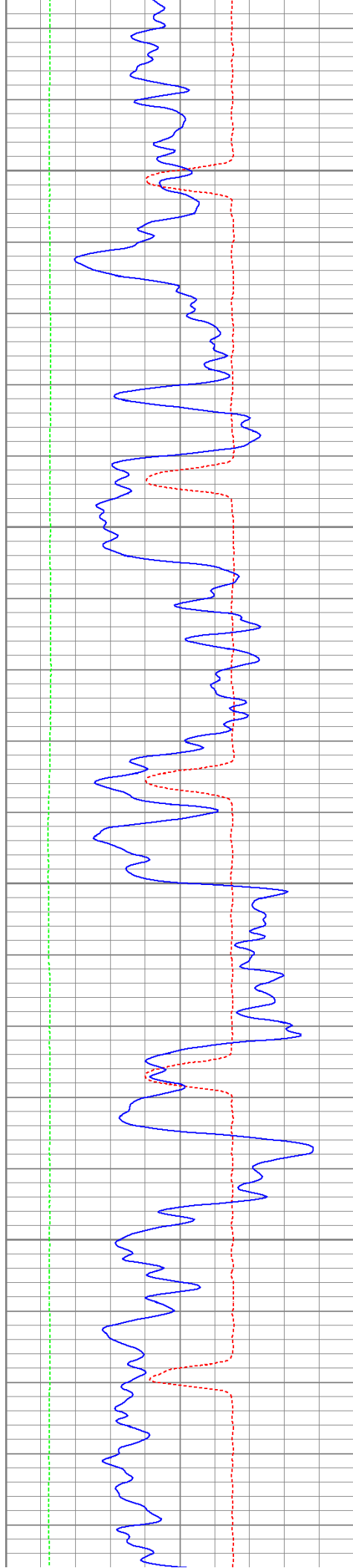
400

450

500

550



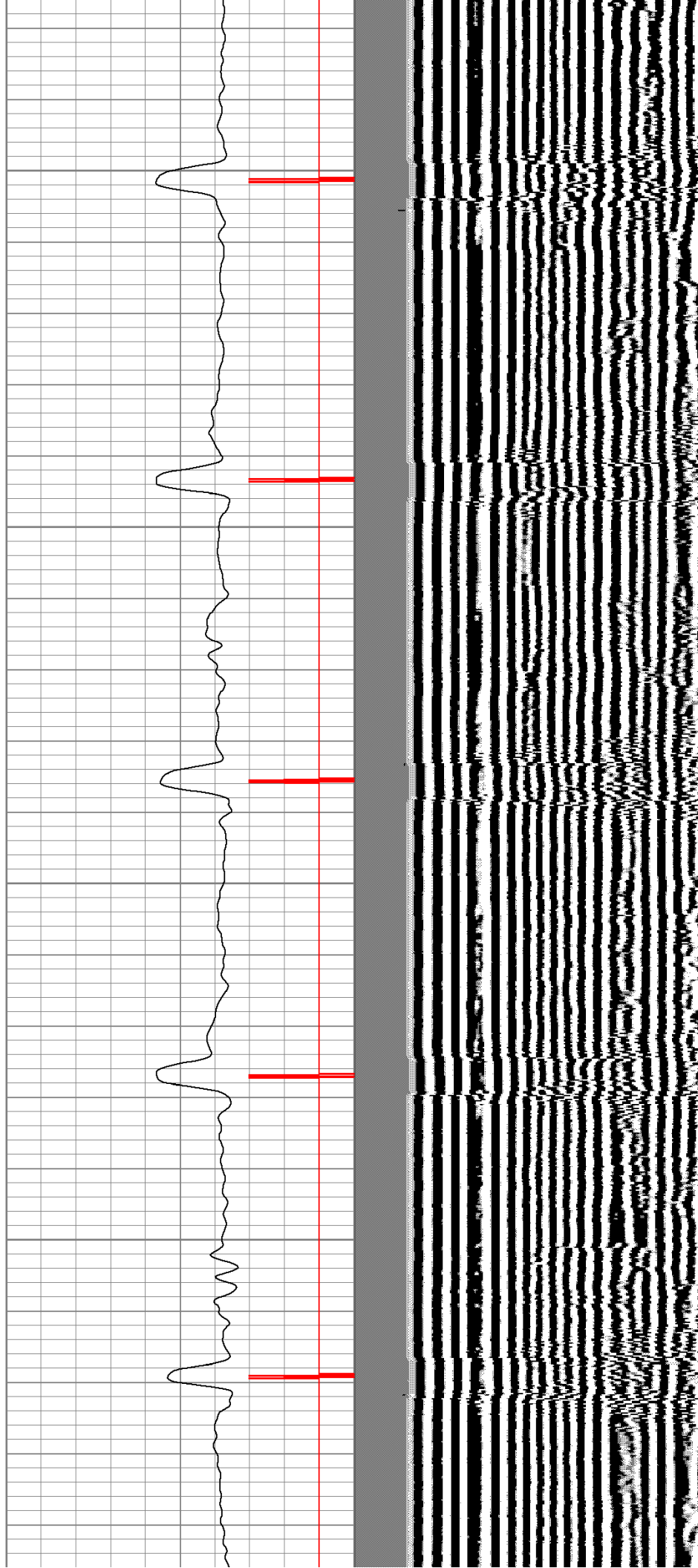


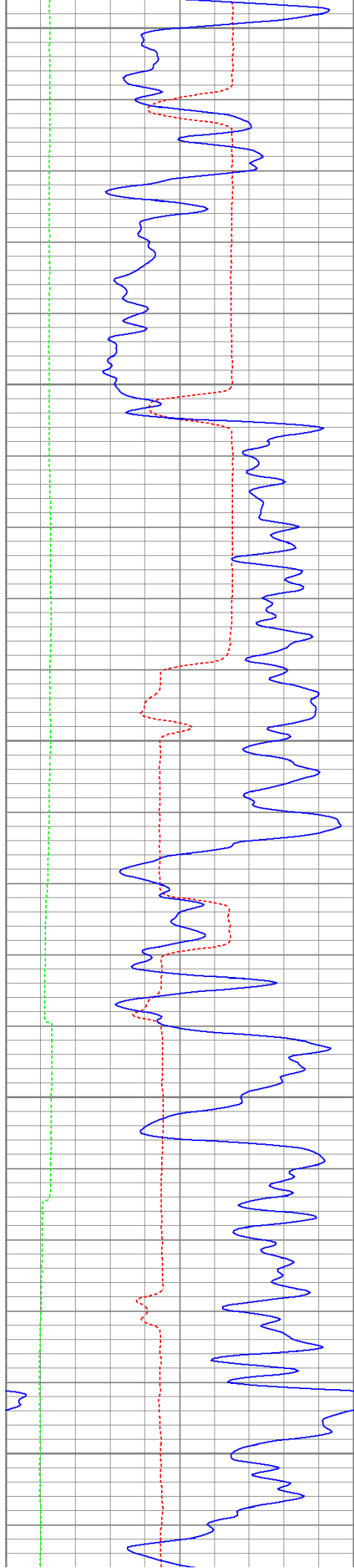
600

650

700

750





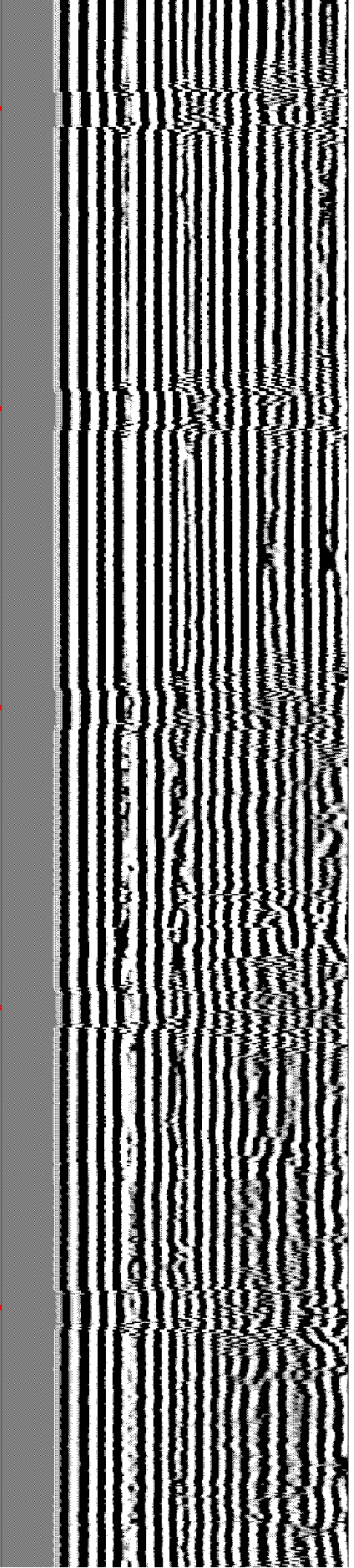
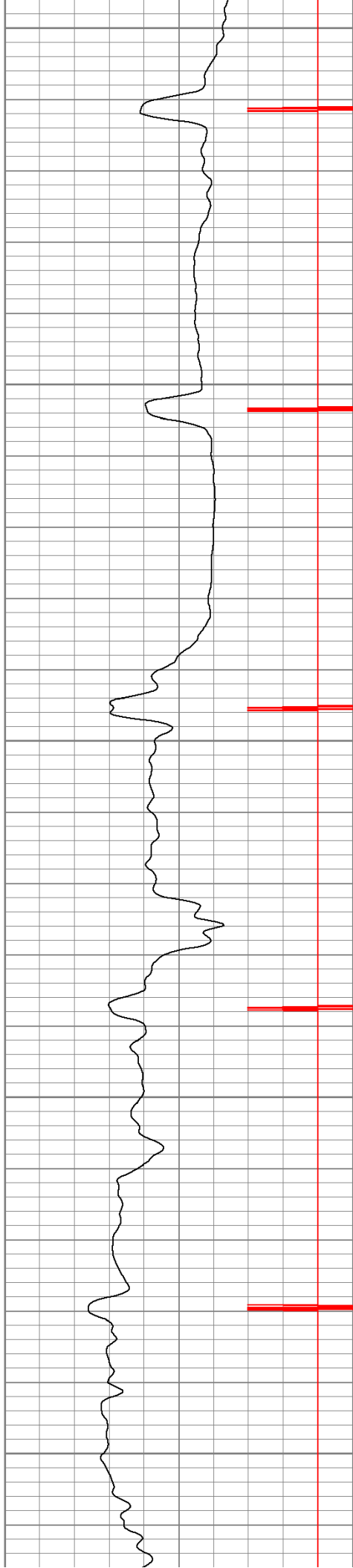
800

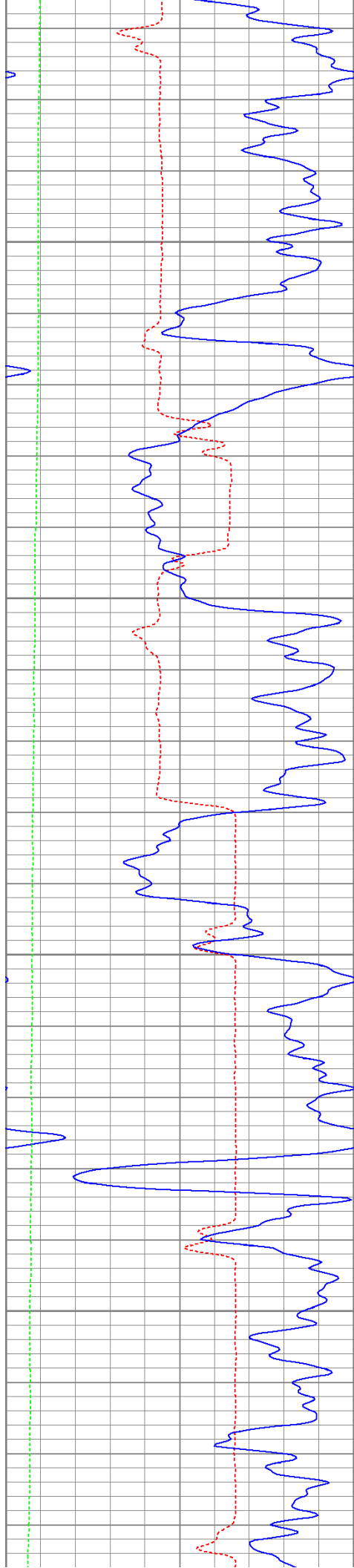
850

900

950

1000



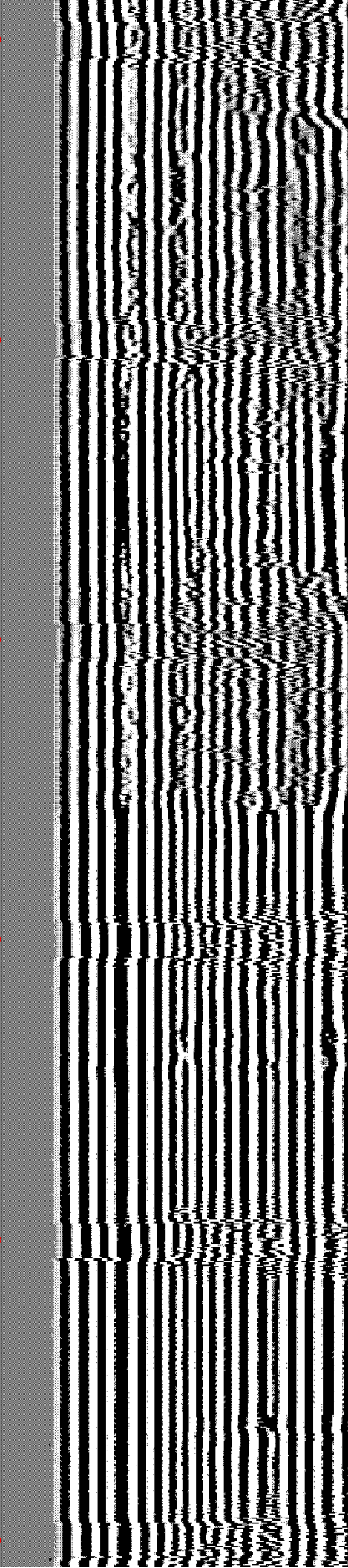
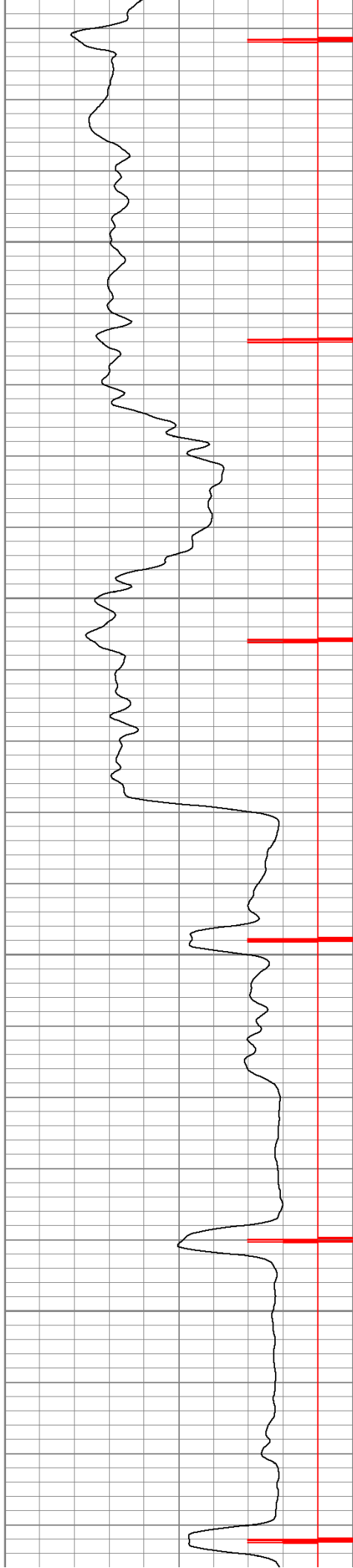


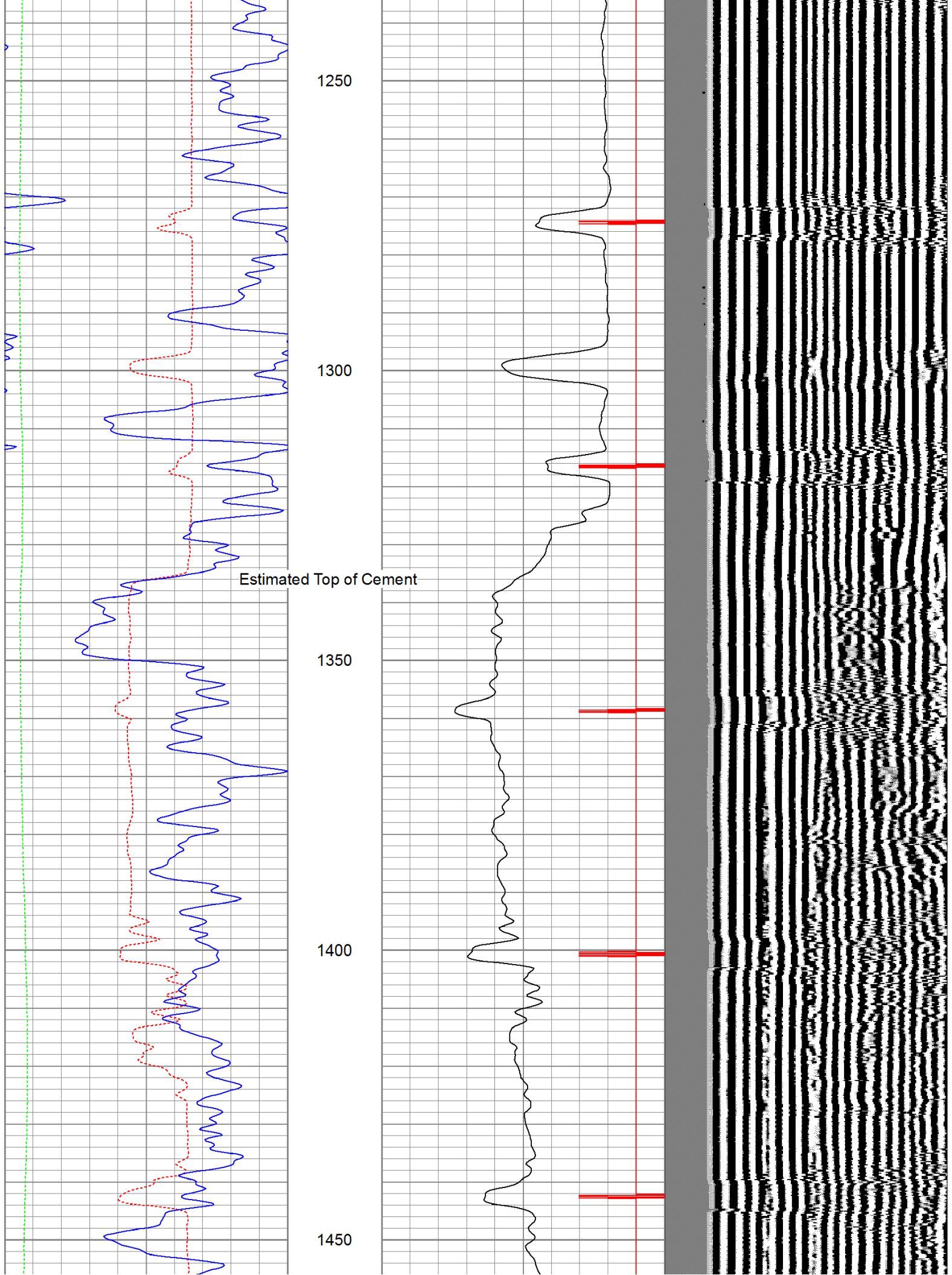
1050

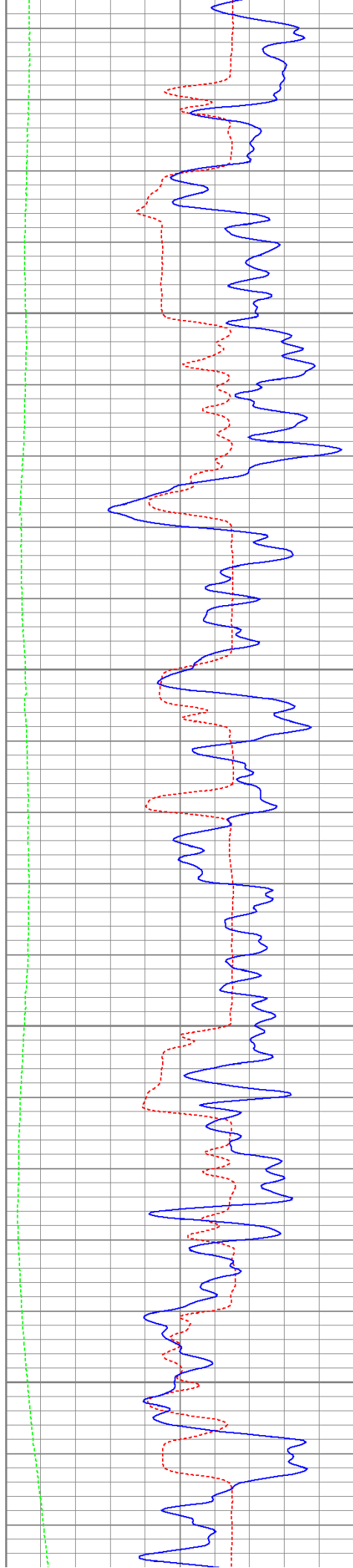
1100

1150

1200





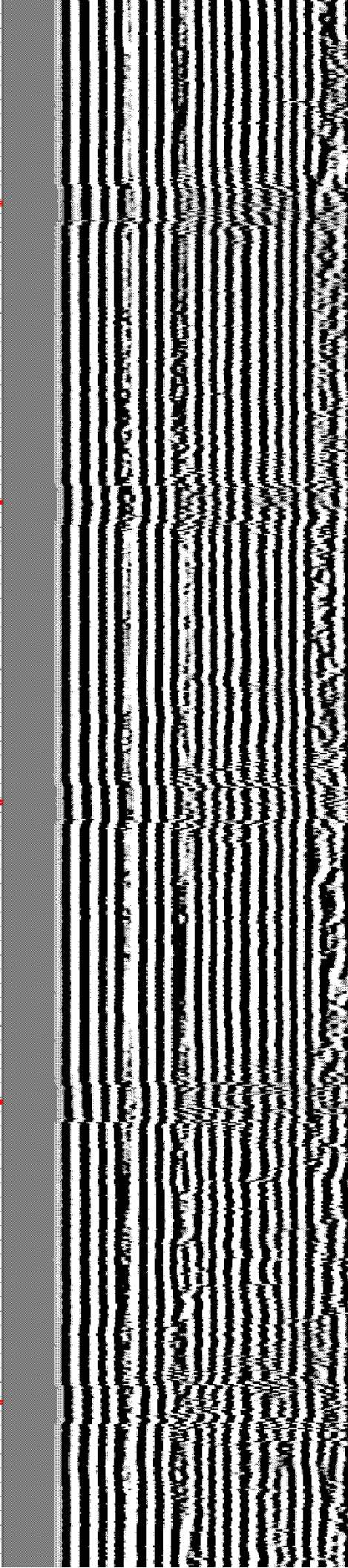


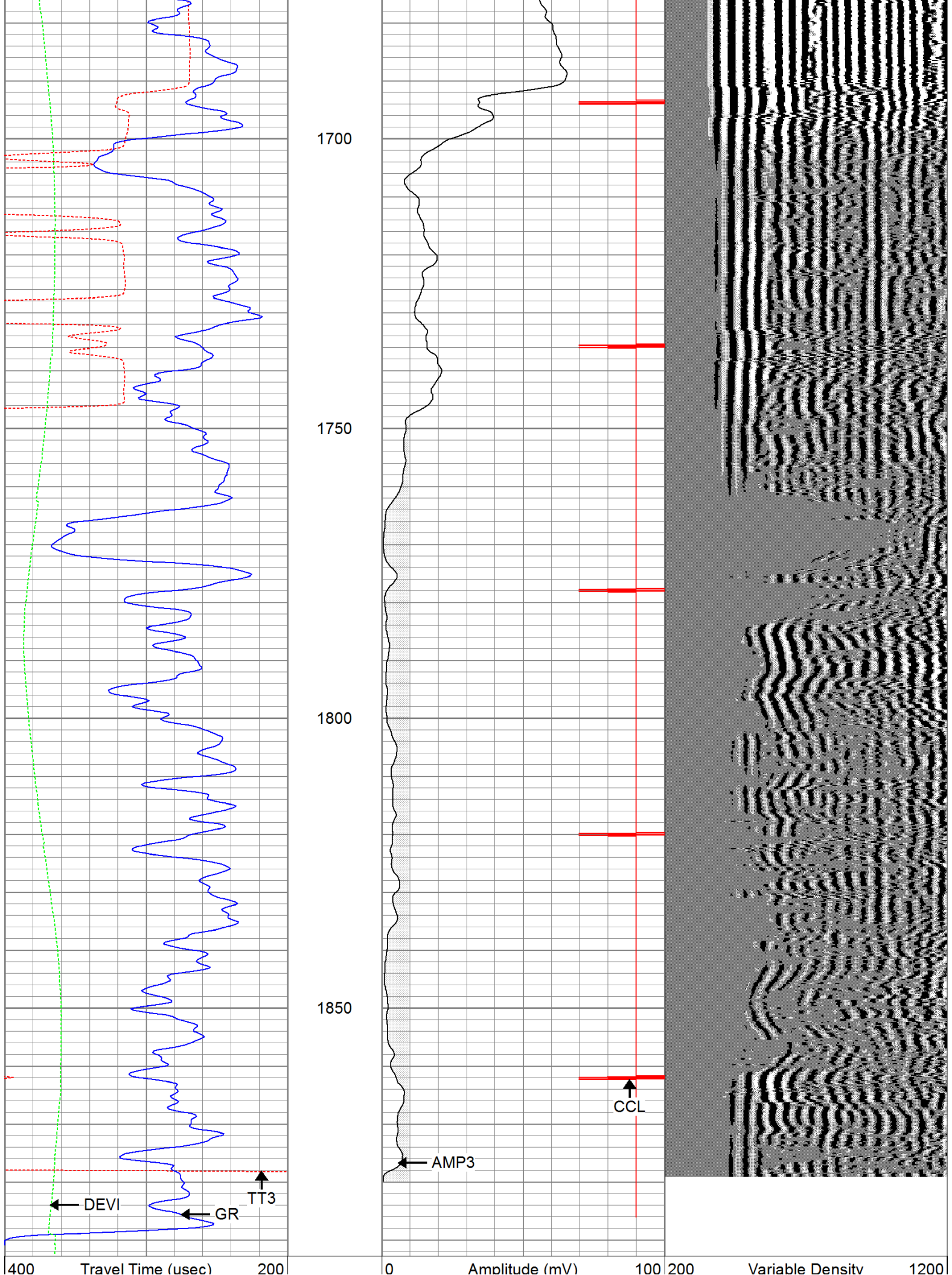
1500

1550

1600

1650





0	GR (GAPI)	200
0	DEVI (°)	10

9	Collar Locator	-1
---	----------------	----

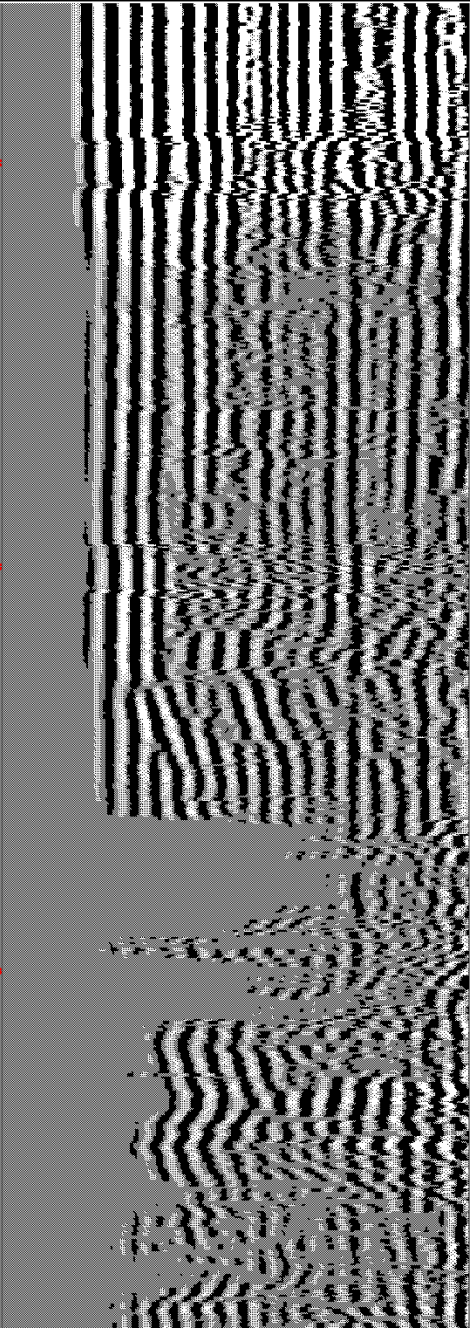
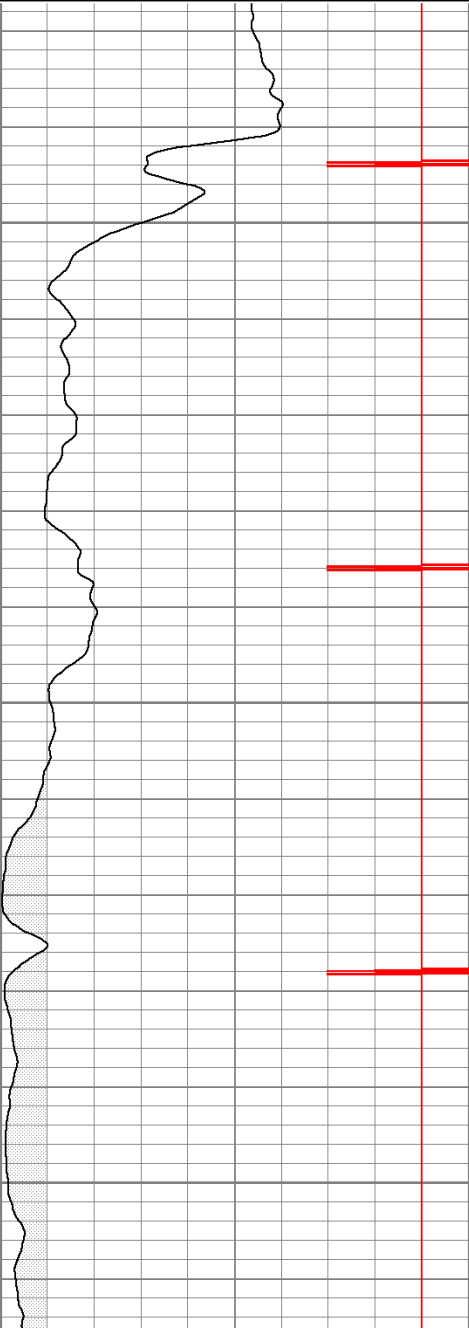
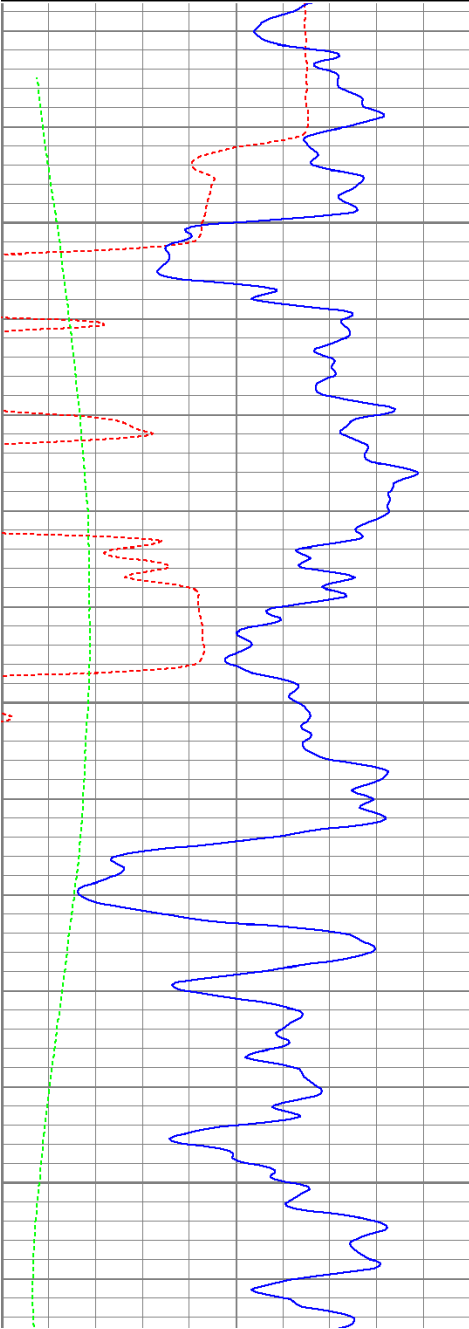


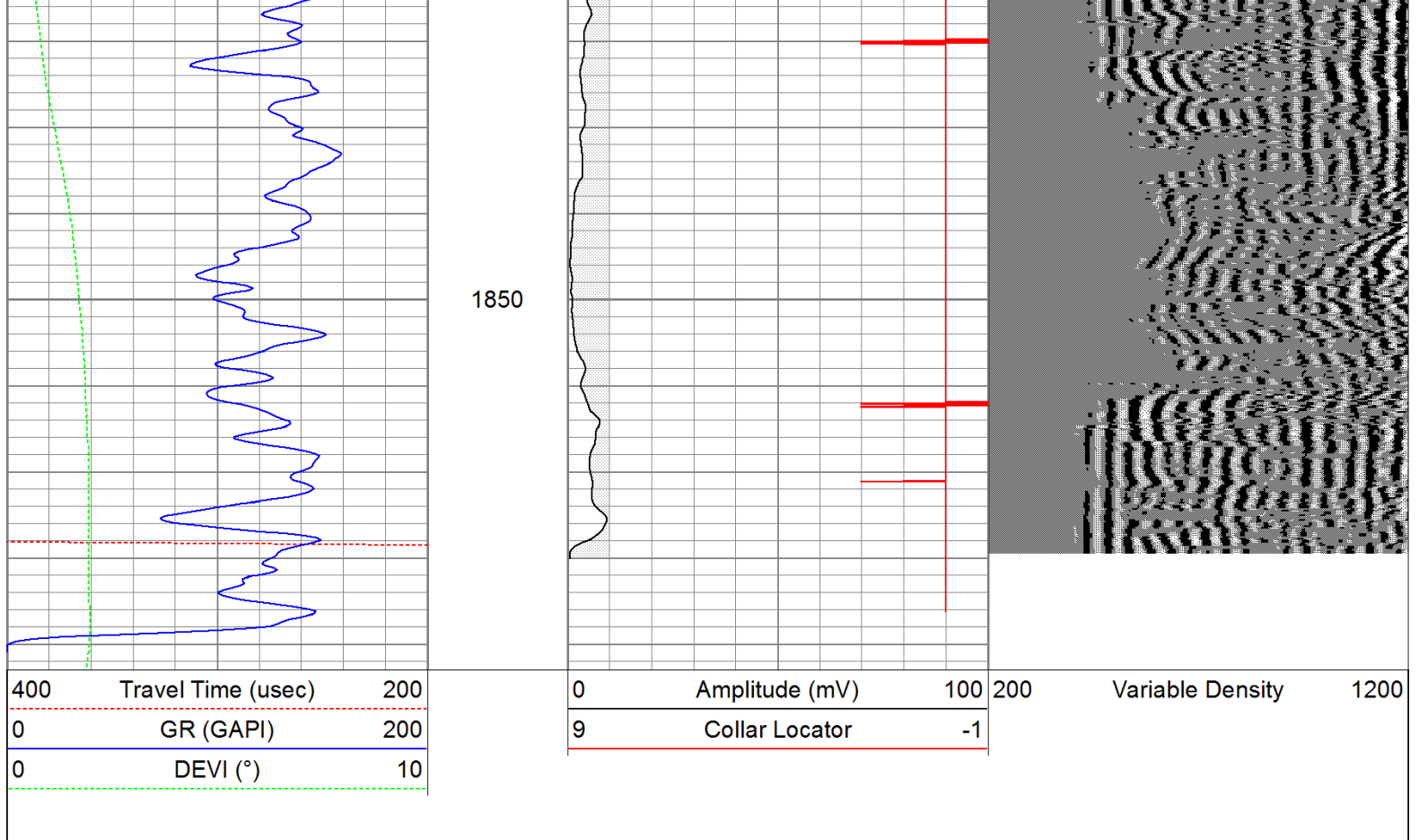
Repeat Pass

Database File: cedar81711b.db
 Dataset Pathname: pass1.1
 Presentation Format: cbldig
 Dataset Creation: Wed Aug 17 14:49:04 2011 by Calc Open-Cased 110302
 Charted by: Depth in Feet scaled 1:240

400	Travel Time (usec)	200
0	GR (GAPI)	200
0	DEVI (°)	10

0	Amplitude (mV)	100	200	Variable Density	1200
9	Collar Locator	-1			


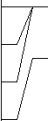




Calibration Report					
Database File:	cedar81711b.db				
Dataset Pathname:	pass1				
Dataset Creation:	Wed Aug 17 14:04:05 2011 by Log Open-Cased 110302				
Gamma Ray Calibration Report					
Serial Number:	080616				
Tool Model:	275D_INC				
Performed:	Wed Aug 10 09:13:03 2011				
Calibrator Value:	200.0	GAPI			
Background Reading:	50.0	cps			
Calibrator Reading:	250.0	cps			
Sensitivity:	1.0000	GAPI/cps			
Inclinometer Calibration Report					
Performed:	Wed Aug 10 09:13:09 2011				
	Low Read.	High Read.	Low Ref.	High Ref.	
X Accelerometer	-3585.20	3595.40	-1.00	1.00	gee
Y Accelerometer	-3619.40	3520.00	-1.00	1.00	gee
Z Accelerometer					
Cement Bond Log Calibration Report					
Serial Number:	081024				
Tool Model:	PROBEDIGITALCBL				

Wed Aug 10 09:18:37 2011

Gain:	49.0339	50.83
Offset:	0.428567	0.467844

Sensor	Offset (ft)	Schematic	Description	Len (ft)	OD (in)	Wt (lb)	
			None	0.75	1.50	5.00	
WVF3	14.75		CBL-PROBEDIGITALCBL (081024)	8.75	2.75	106.50	
WVF5	13.75		PROBE DIGITAL CBL				
			X	3.00	1.69	25.00	
CCL	6.50						
ACCX	4.83			GR-275D_INC (080616)	4.50	2.75	50.00
ACCY	4.83			2-3/4" GR-CCL with Inclination			
ACCZ	4.83						
GR	3.83			X	3.00	1.69	25.00
		Dataset:	cedar81711b.db: field/well/run1/pass1				
		Total Length:	20.00 ft				
		Total Weight:	211.50 lb				
		O.D.	2.75 in				