

Company		Pioneer Natural Resources	
Well	Cedar 31-19		
Field	Purgatoire River		
County	Las Animas		
State	Colorado		
Company		Pioneer Natural Resources	
Well	Cedar 31-19		
Field	Purgatoire River		
County	Las Animas		State Colorado
Location:		API #: 05 071 09714 00	
SEC 19 TWP 32S RGE 67W		716' FNL & 2076' FEL	
Permanent Datum	Ground Level	Elevation	8151'
Log Measured From	Kelly Bushing 4' AGL		
Drilling Measured From	Kelly Bushing		
Other Services		DEVI	
Date	7-25-11		
Run Number	ONE		
Depth Driller	3314'		
Depth Logger	3268'		
Bottom Logged Interval	3266'		
Top Log Interval	Surface		
Open Hole Size	7 7/8		
Type Fluid	water		
Density / Viscosity	///		
Max. Recorded Temp.	///		
Estimated Cement Top	2825'		
Time Well Ready	R.O.A		
Time Logger on Bottom	8:45 A.M.		
Equipment Number	T590		
Location	Trinidad		
Recorded By	C. Sisneros		
Witnessed By	Mr. John Menard		
Borehole Record		Tubing Record	
Run Number	Bit	From	To
Casing Record	Size	Wgt/Ft	Top Bottom
Surface String	8 5/8"		00 612'
Prot. String			
Production String	5 1/2"		00 TD
Liner			

<<< Fold Here >>>

All interpretations are opinions based on inferences from electrical or other measurements and we cannot and do not guarantee the accuracy or correctness of any interpretation, and we shall not, except in the case of gross or willful negligence on our part, be liable or responsible for any loss, costs, damages, or expenses incurred or sustained by anyone resulting from any interpretation made by any of our officers, agents or employees. These interpretations are also subject to our general terms and conditions set out in our current Price Schedule.

Comments

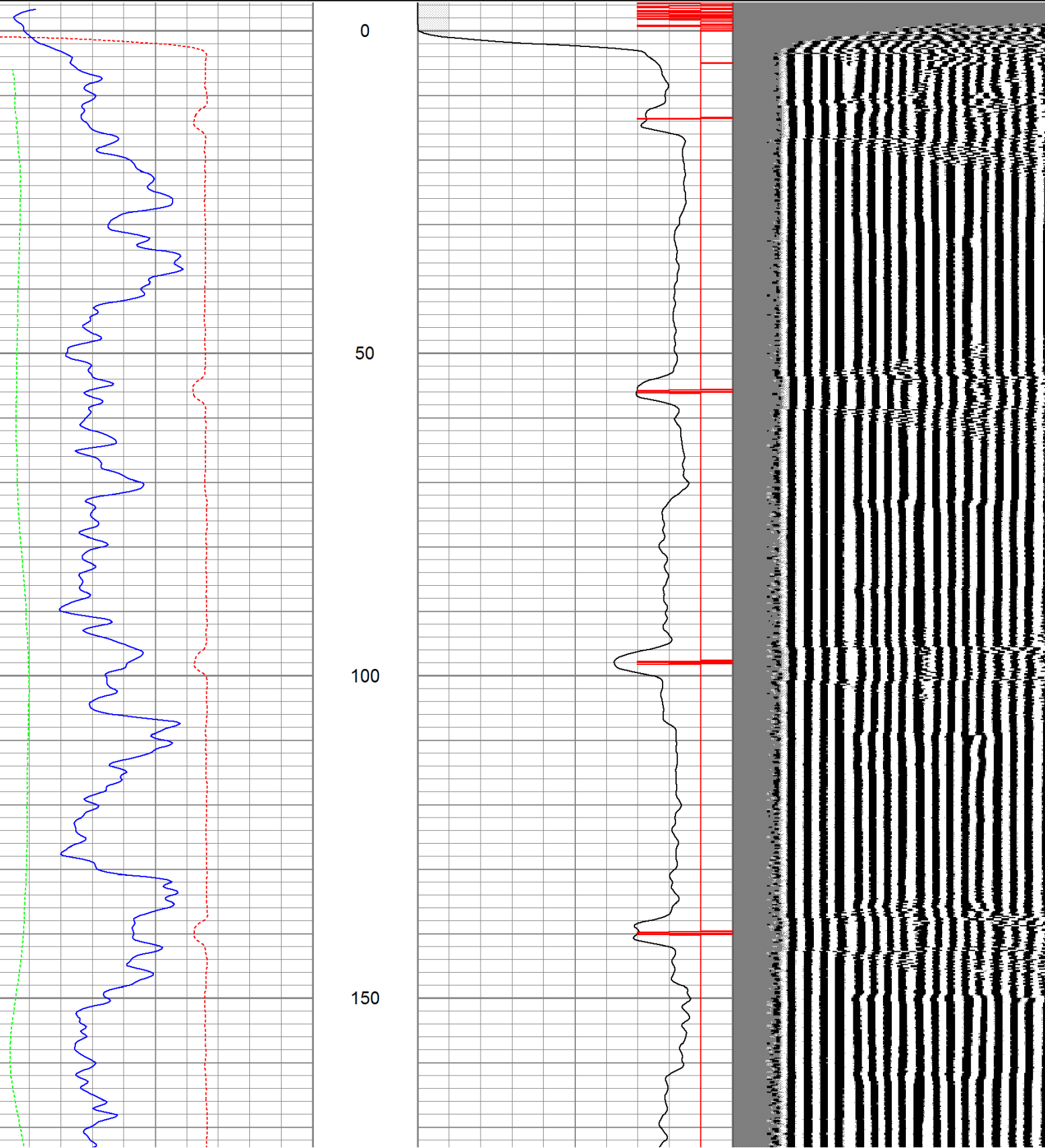
Main Pass logged under 1000 PSI.

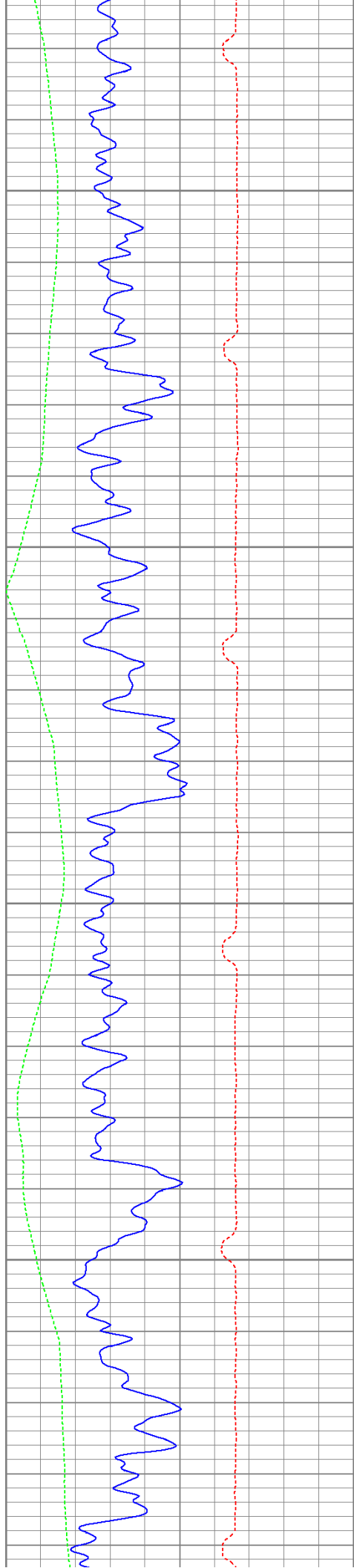
Directions:

Wet canyon, seventh left after fire station (Morrison Ridge sign on right side of road by mail boxes),
go over yellow cattle gaurd,stay straight, drive past the lightning location,
next right, go thru double green gates, drive past A frame cabin, drive thru double green gates,
at Y Stay left,stay on road, dead end on location.

Database File: cedar72511b.db
Dataset Pathname: pass2
Presentation Format: cbldig
Dataset Creation: Mon Jul 25 10:18:39 2011 by Log Open-Cased 110302
Charted by: Depth in Feet scaled 1:240

400	Travel Time (usec)	200	0	Amplitude (mV)	100	200	Variable Density	1200
0	GR (GAPI)	200	9	Collar Locator	-1			
0	DEVI (°)	10						



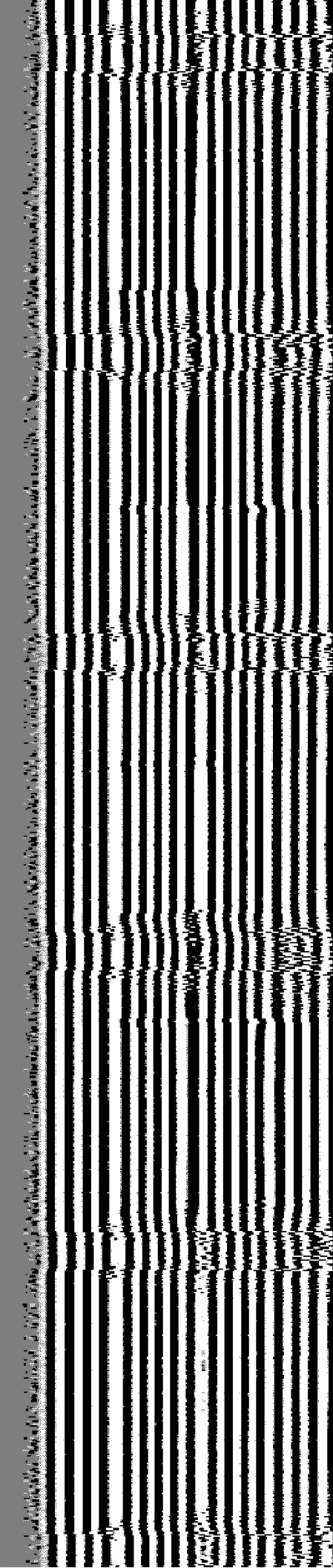
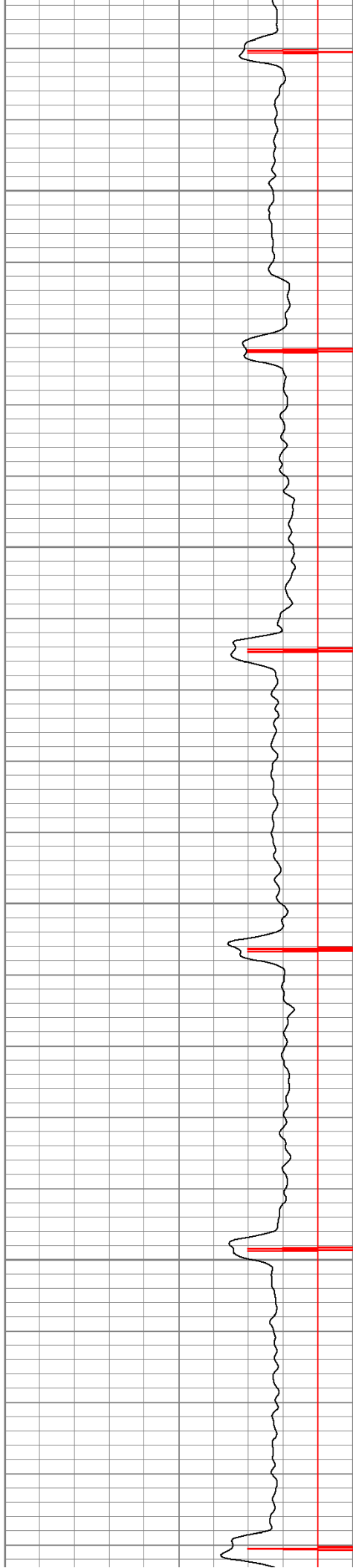


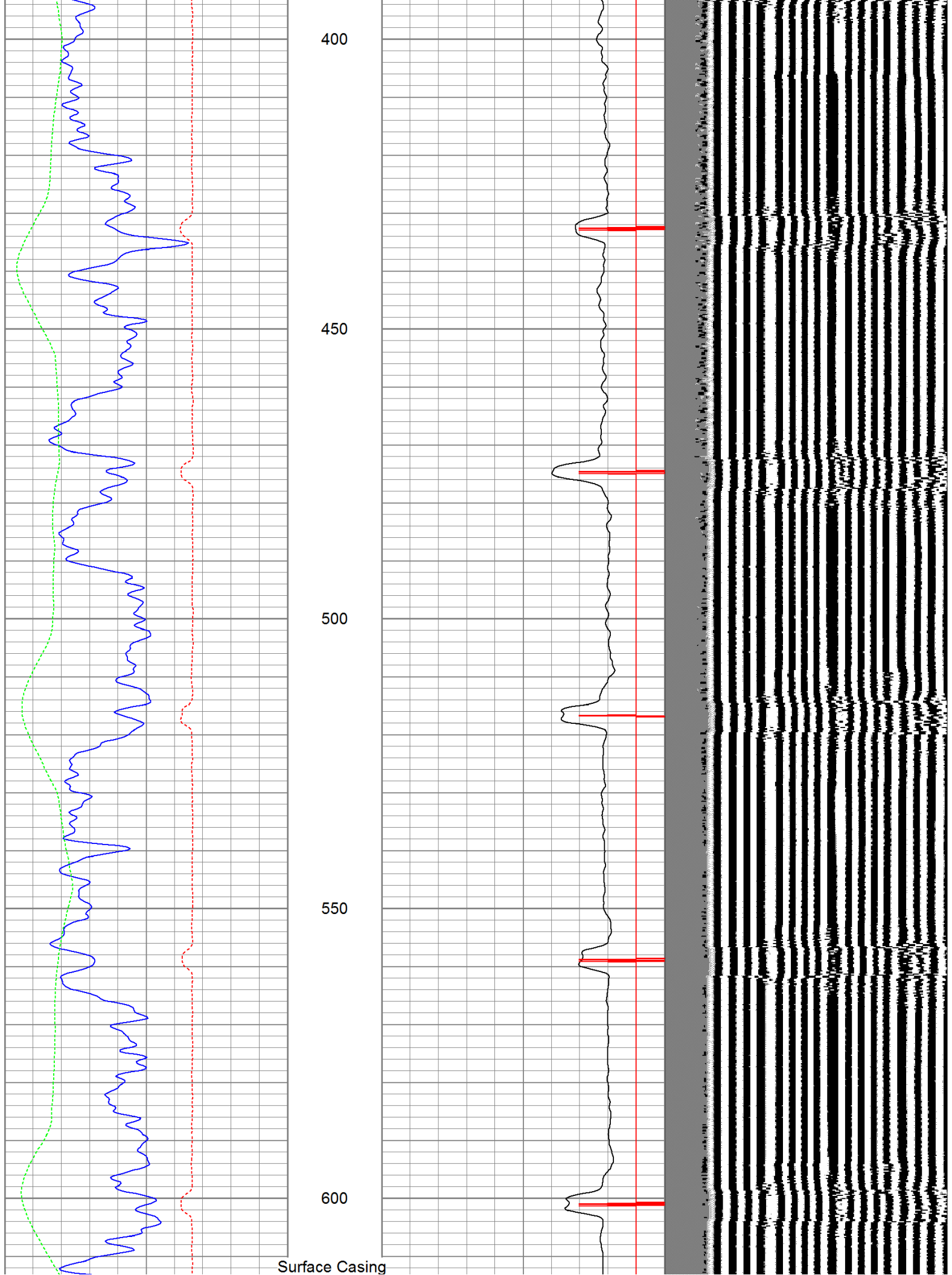
200

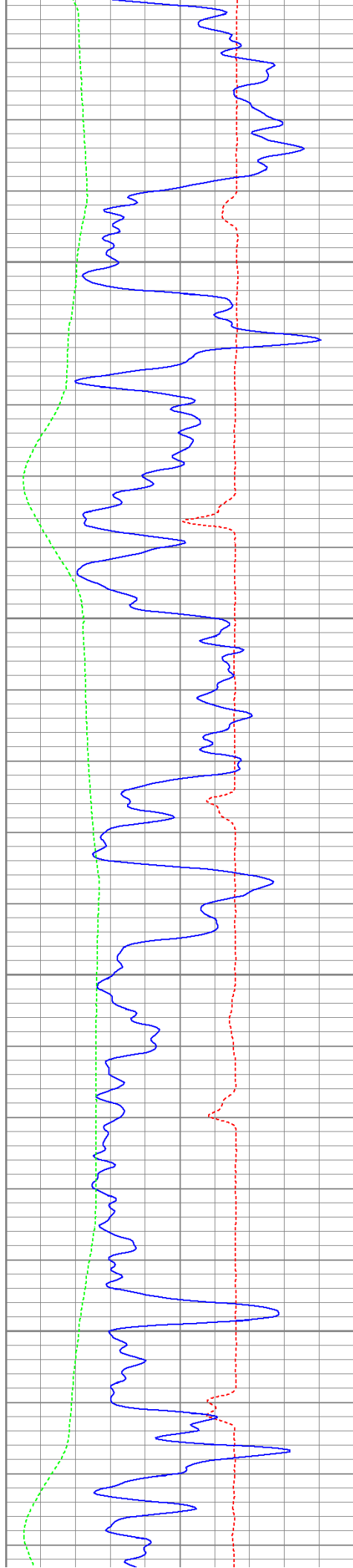
250

300

350





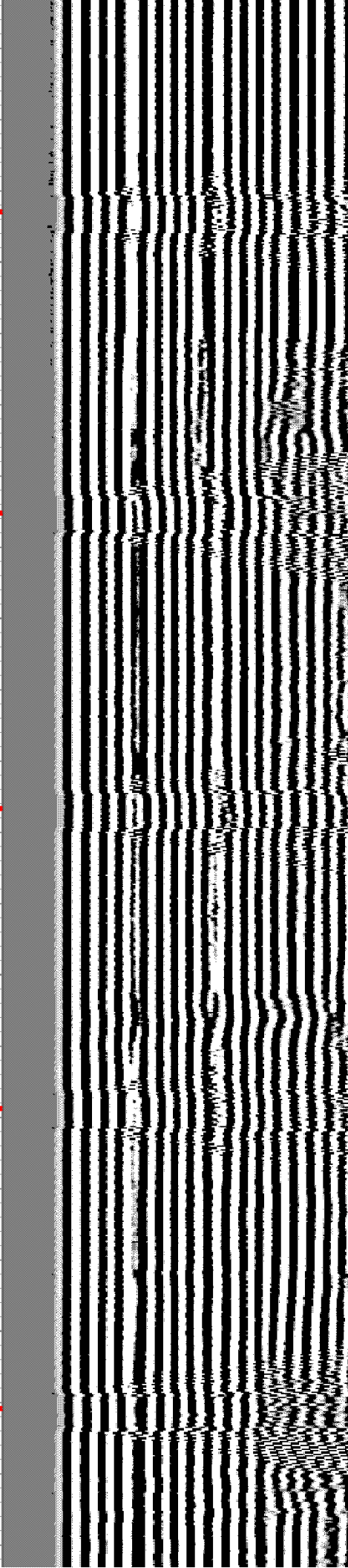
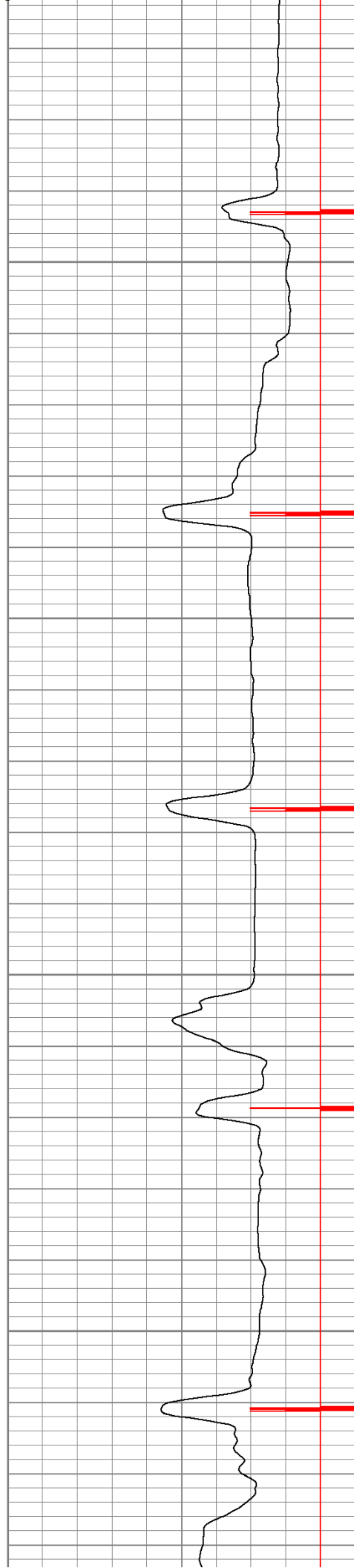


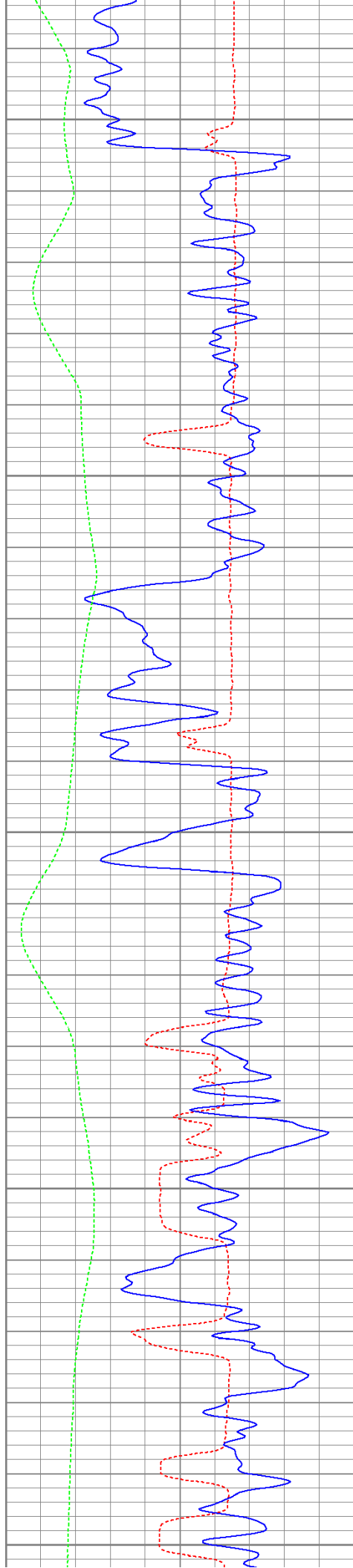
650

700

750

800





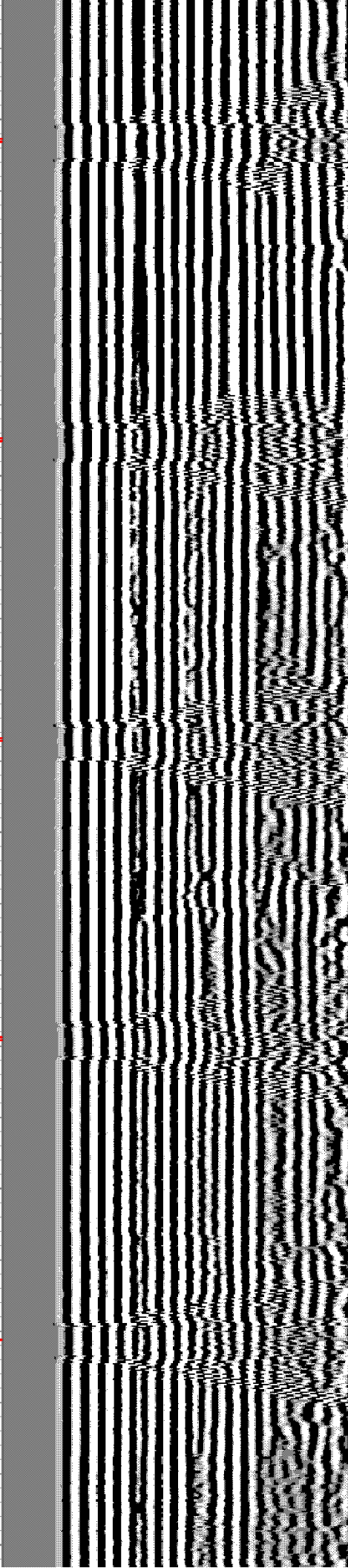
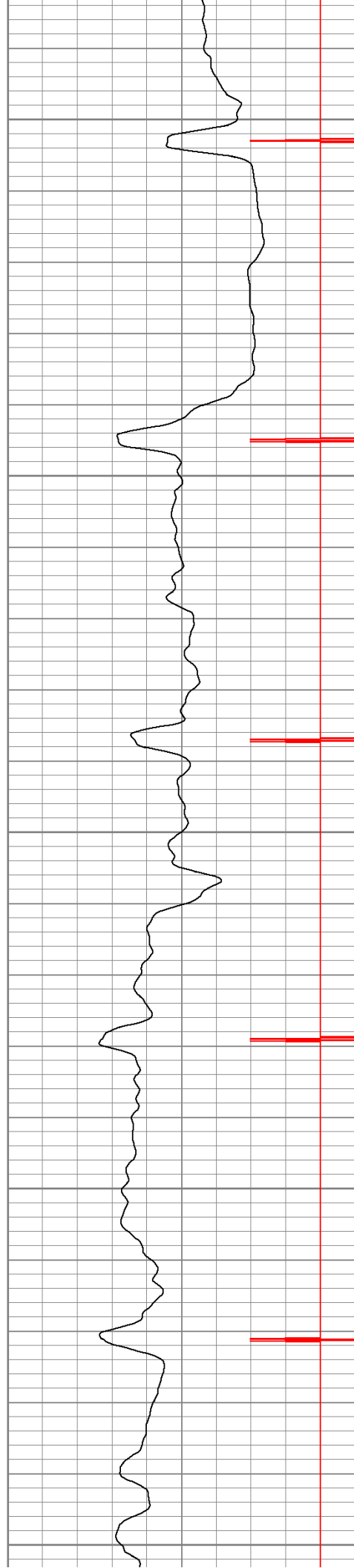
850

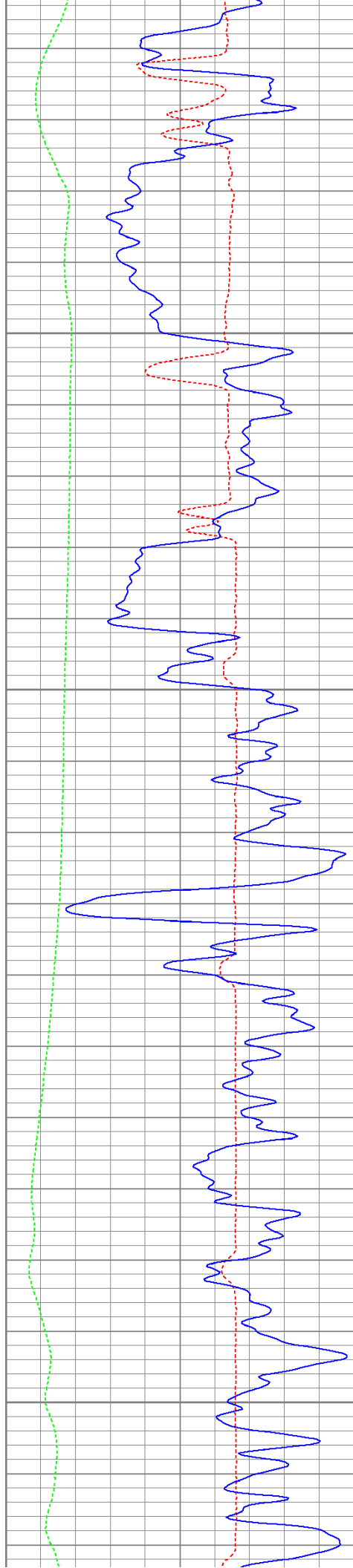
900

950

1000

1050



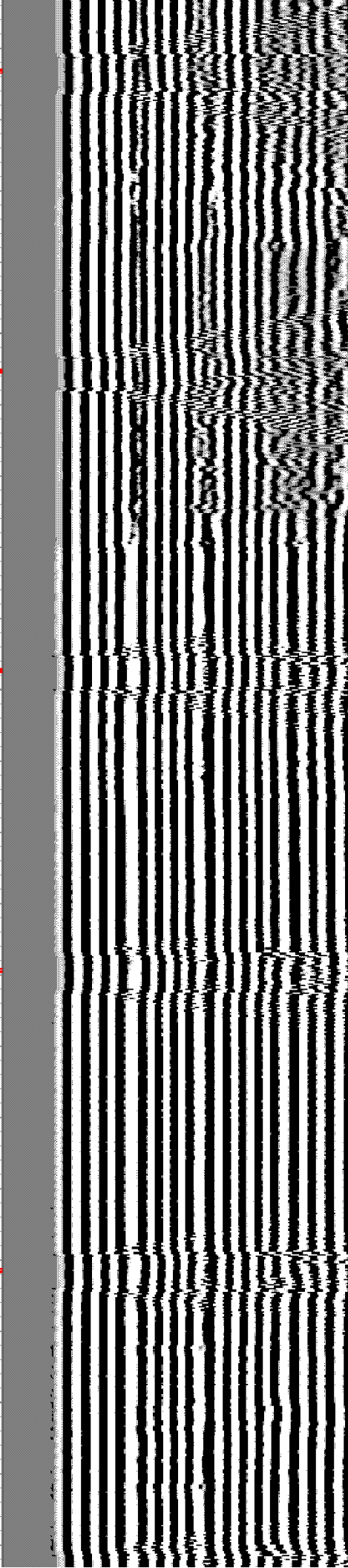
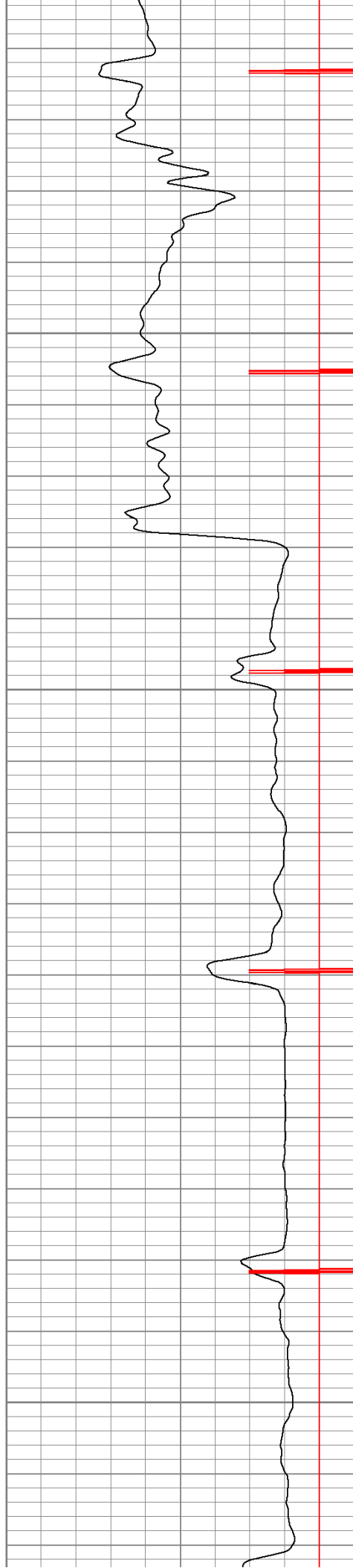


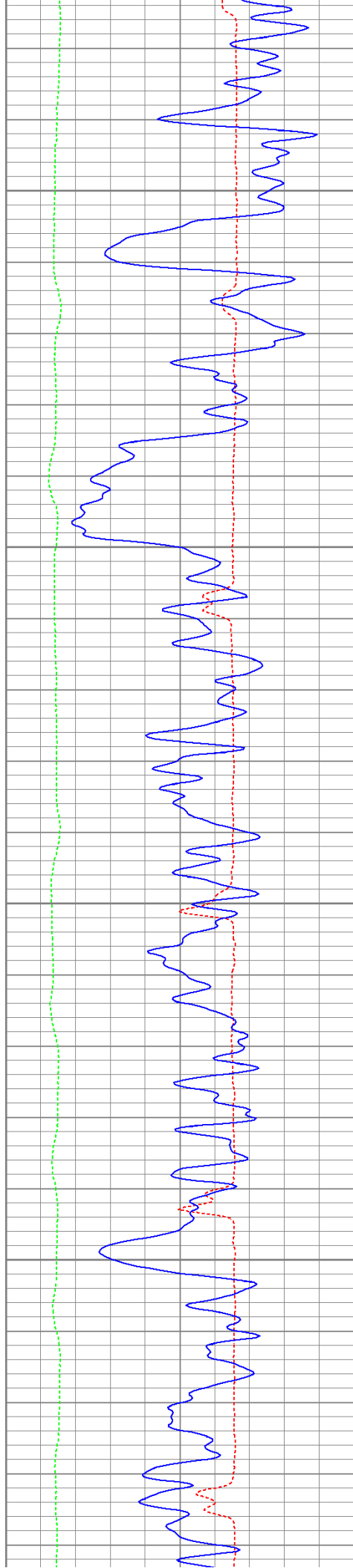
1100

1150

1200

1250



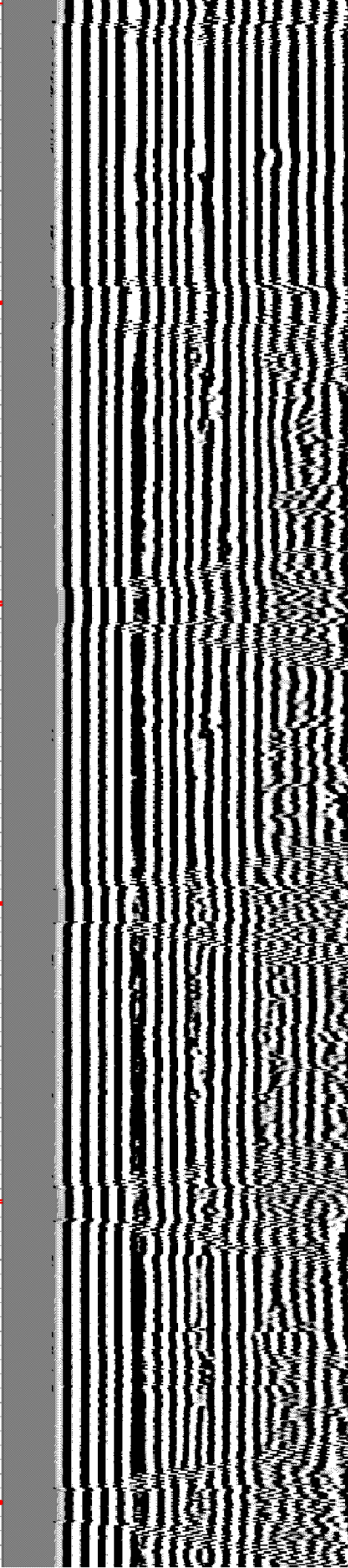
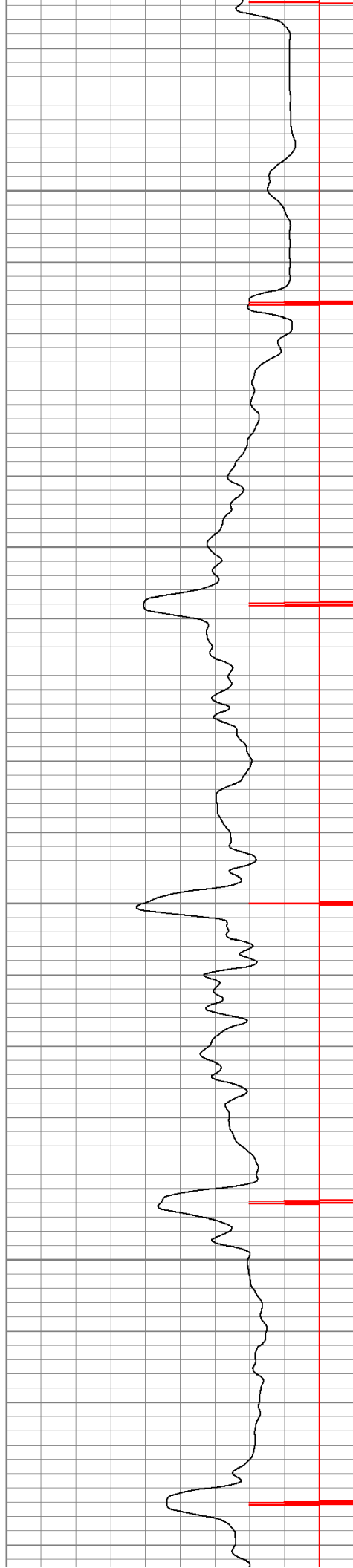


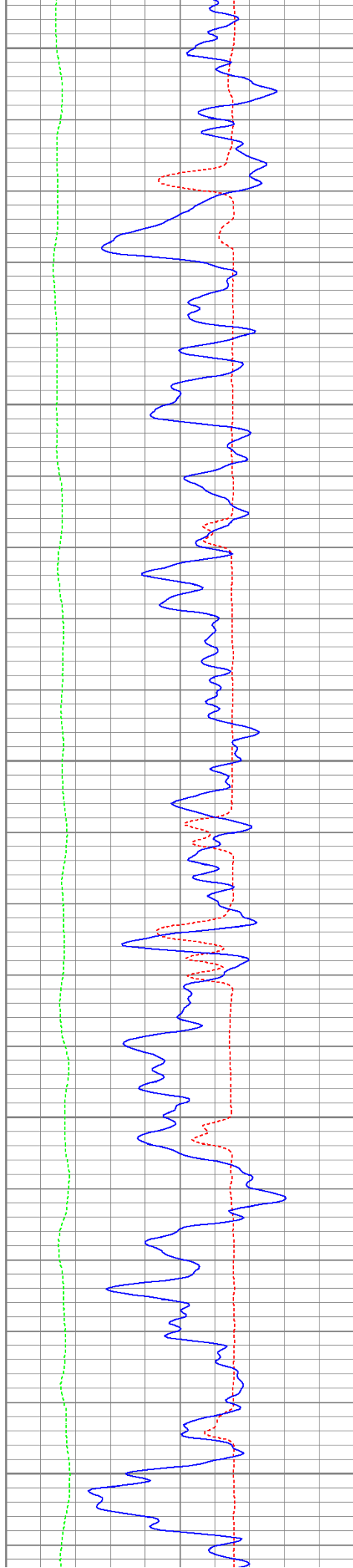
1300

1350

1400

1450





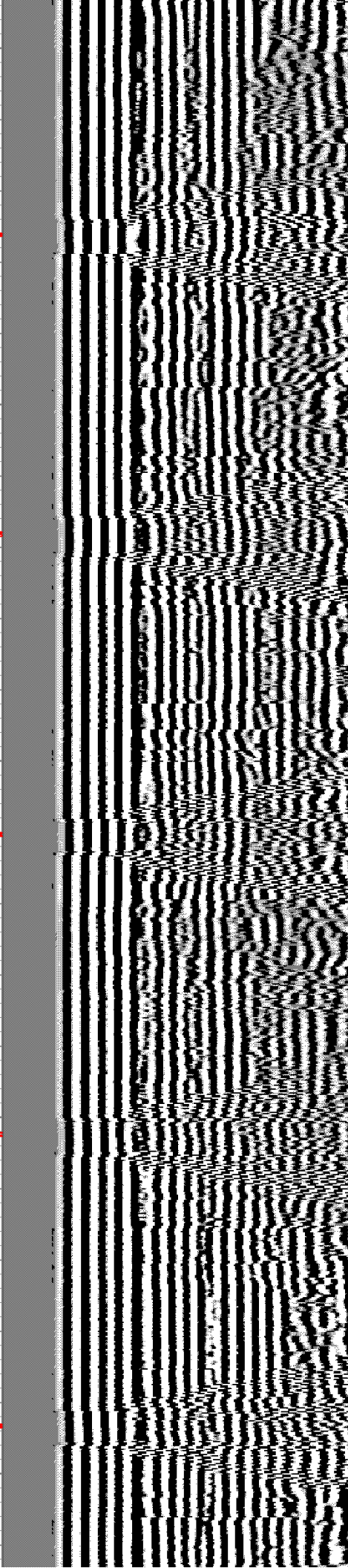
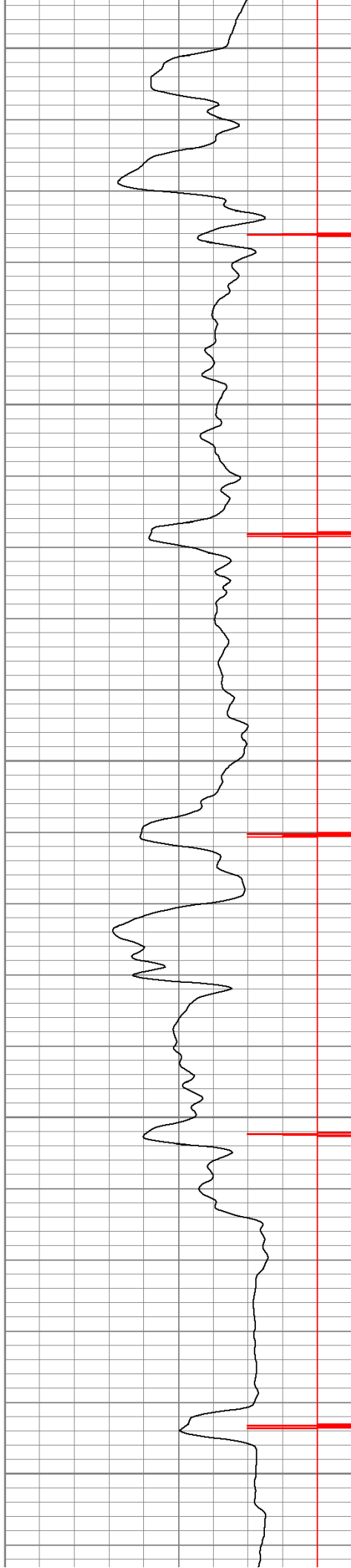
1500

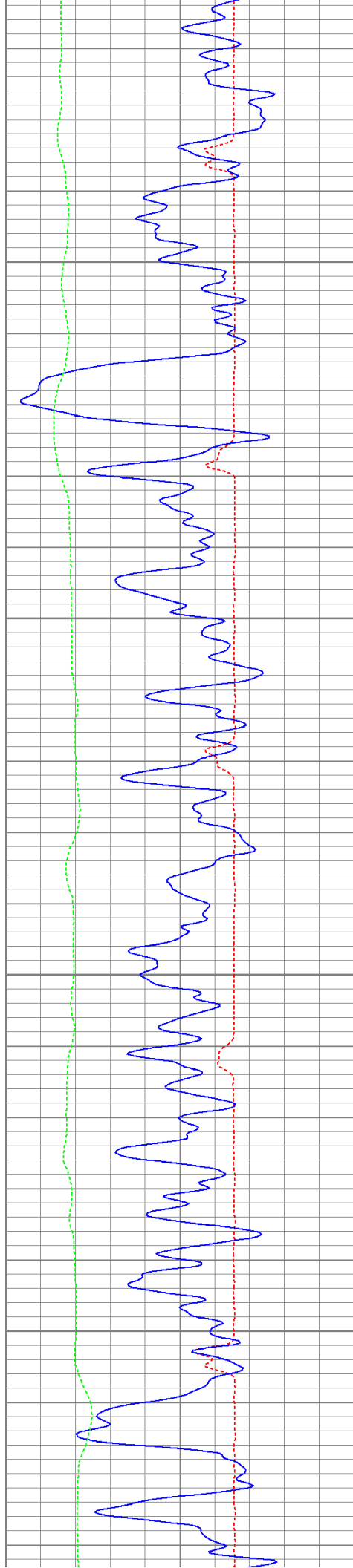
1550

1600

1650

1700



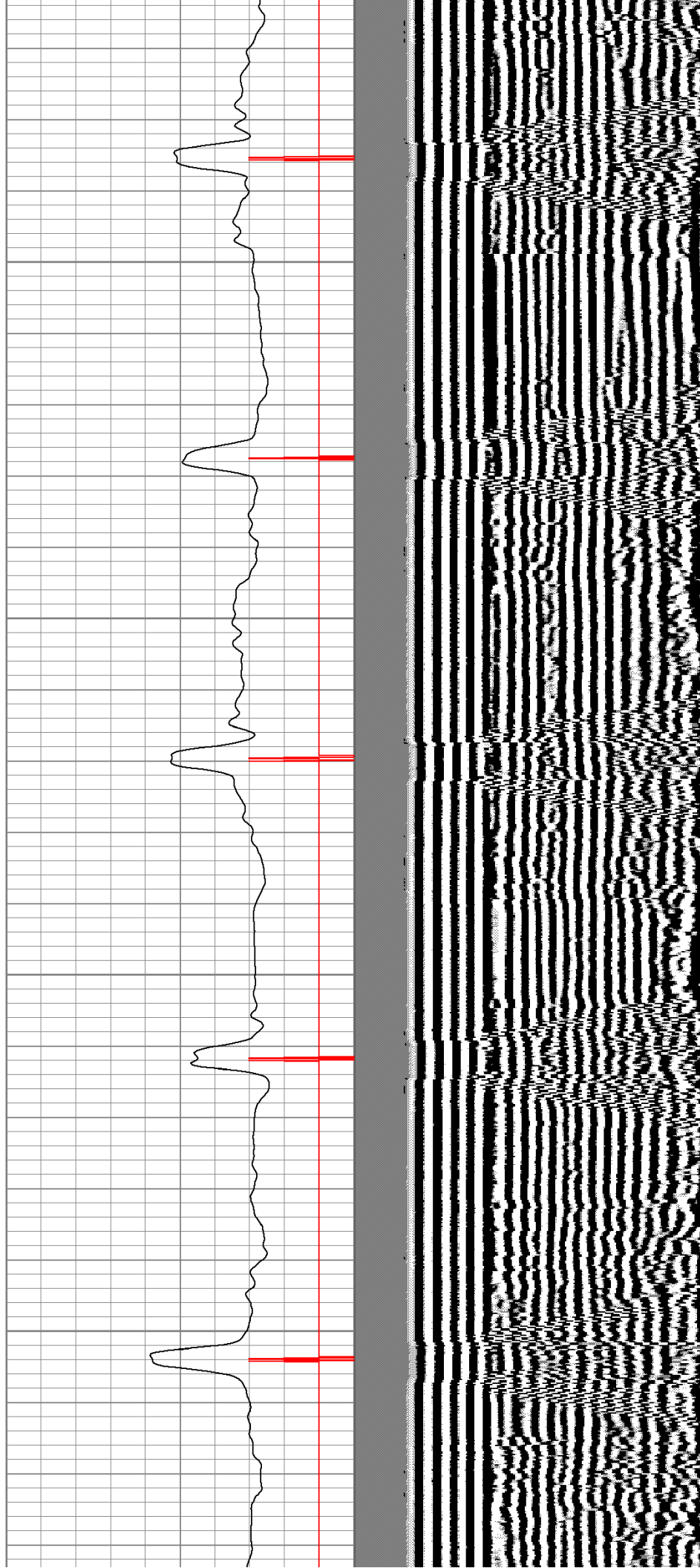


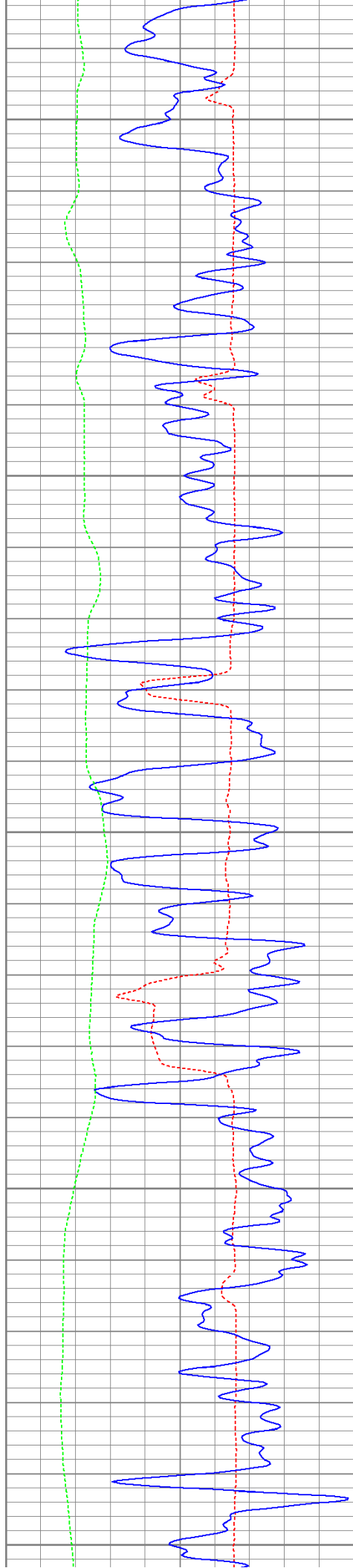
1750

1800

1850

1900





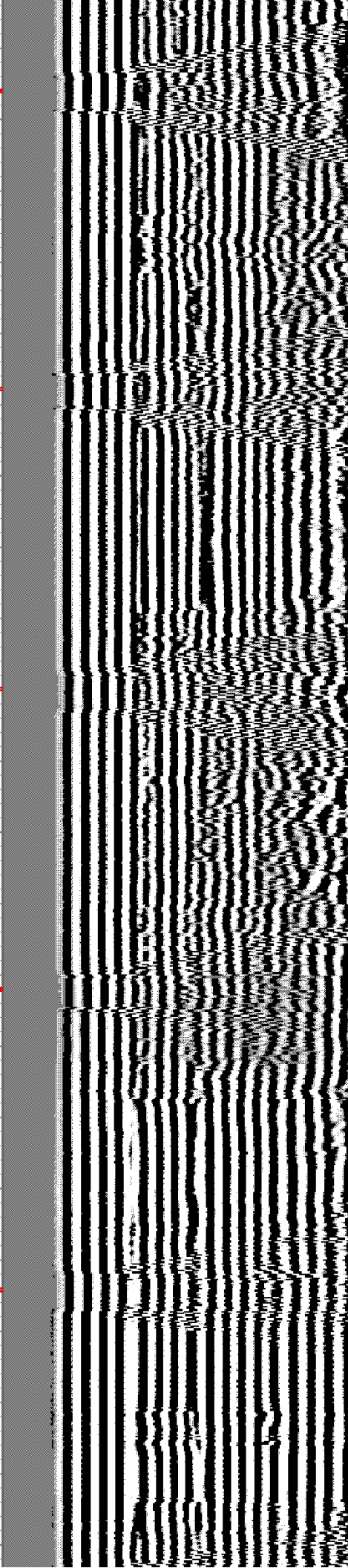
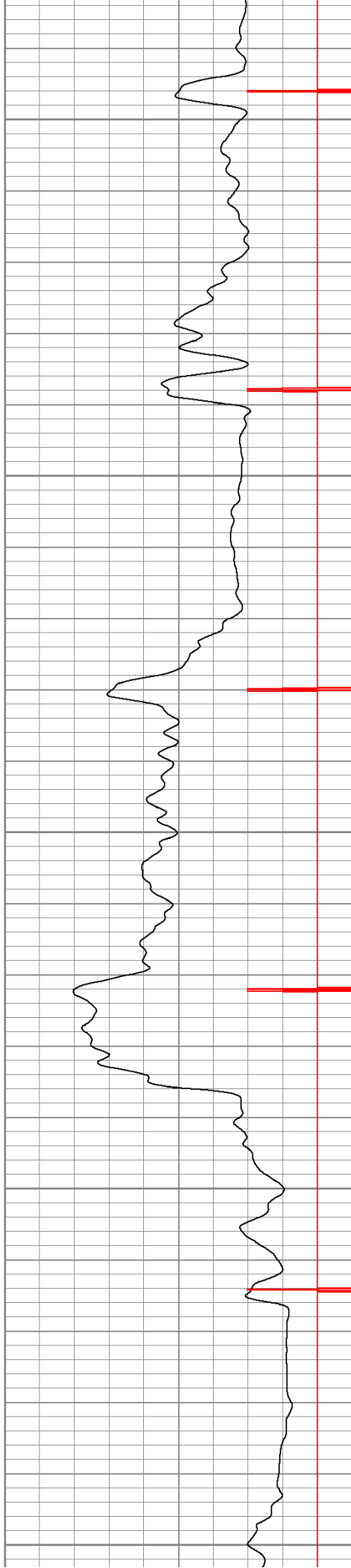
1950

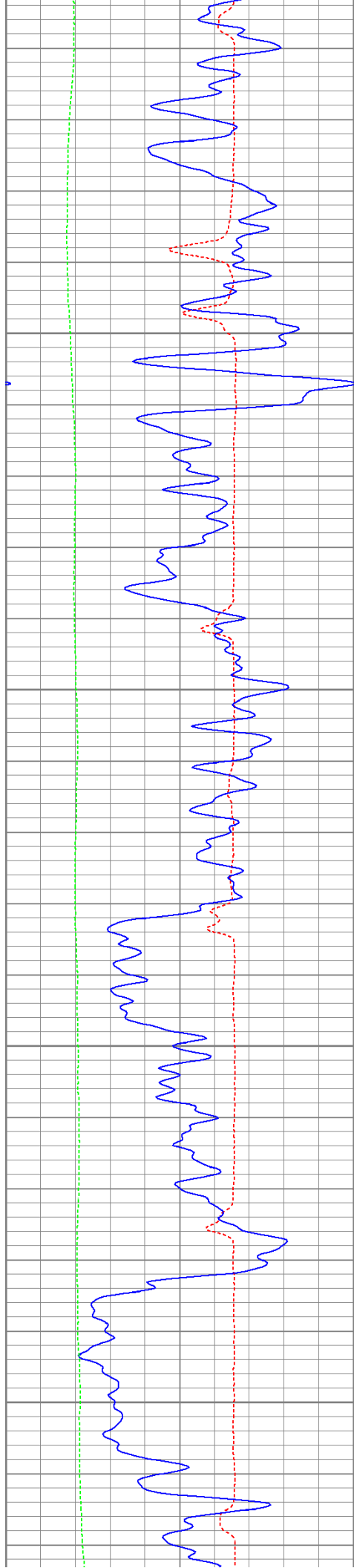
2000

2050

2100

2150



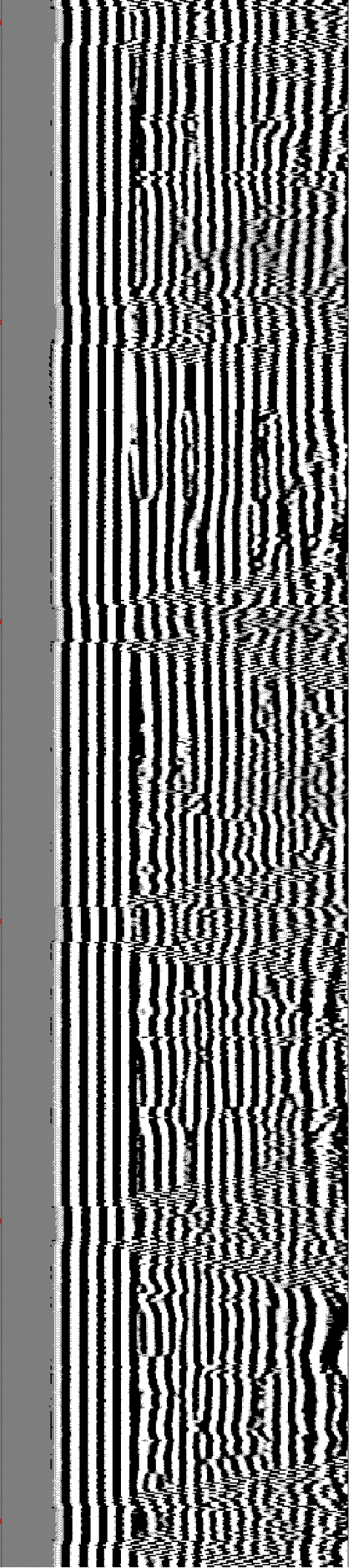
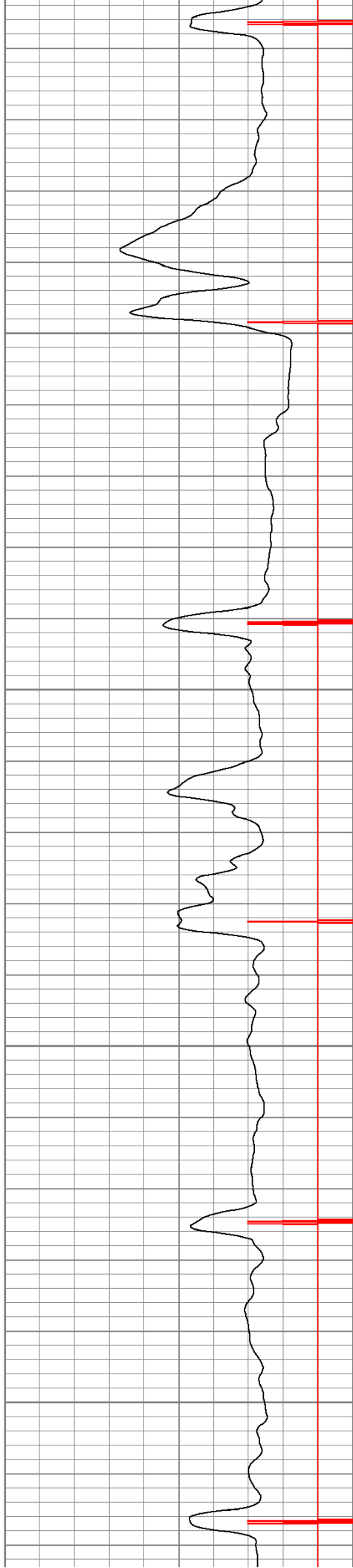


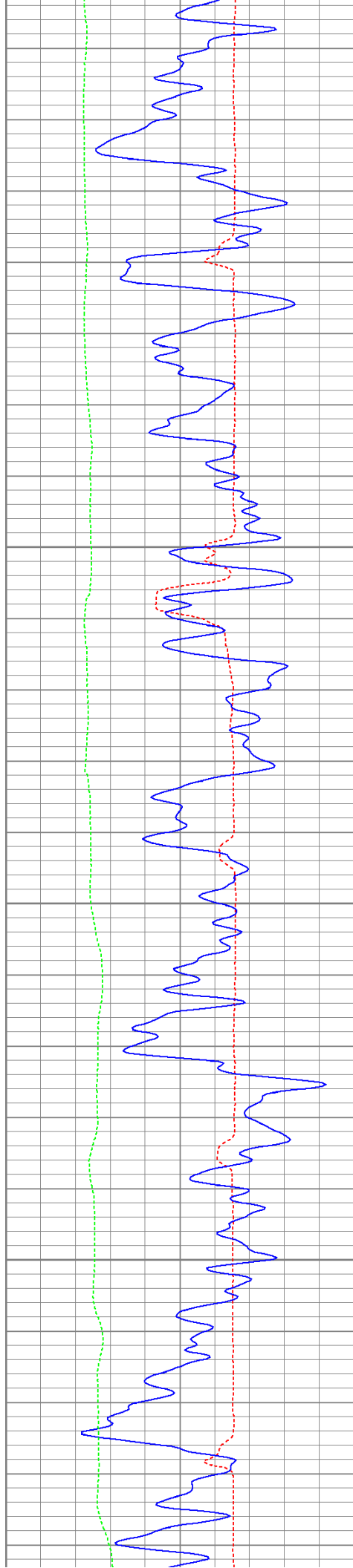
2200

2250

2300

2350



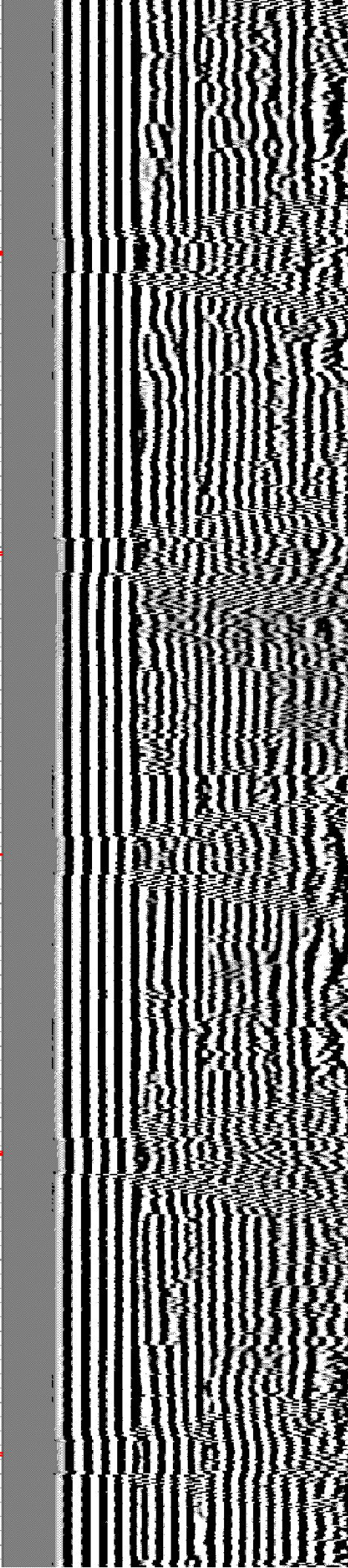
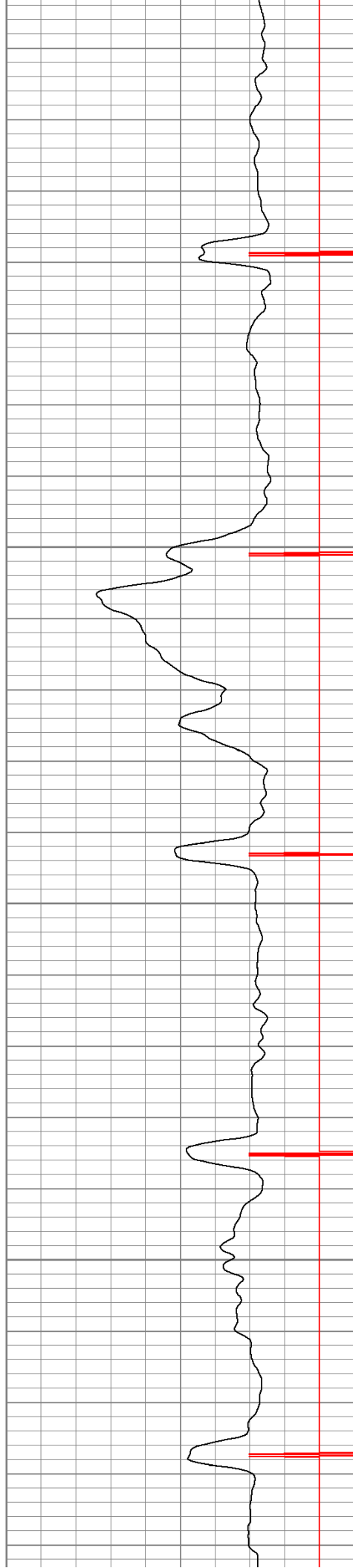


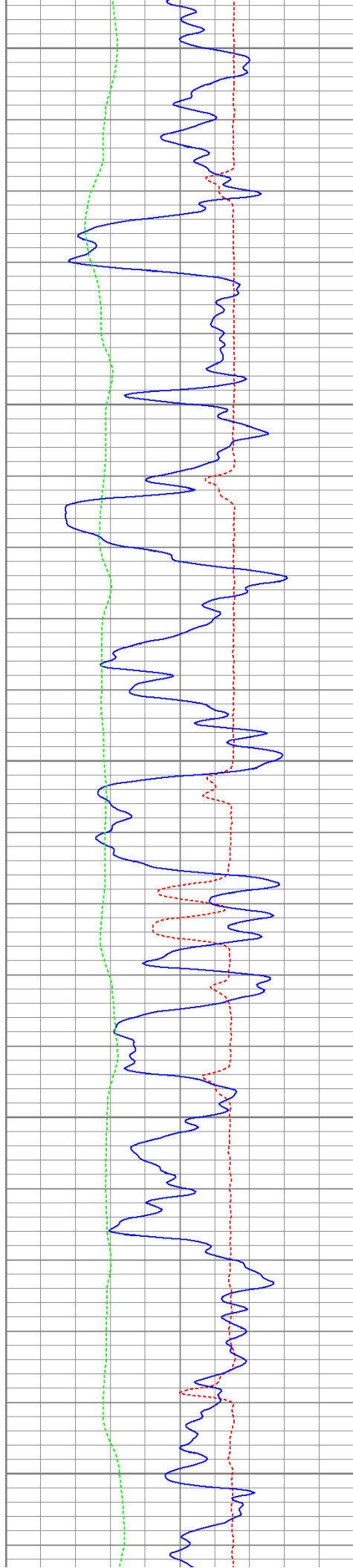
2400

2450

2500

2550





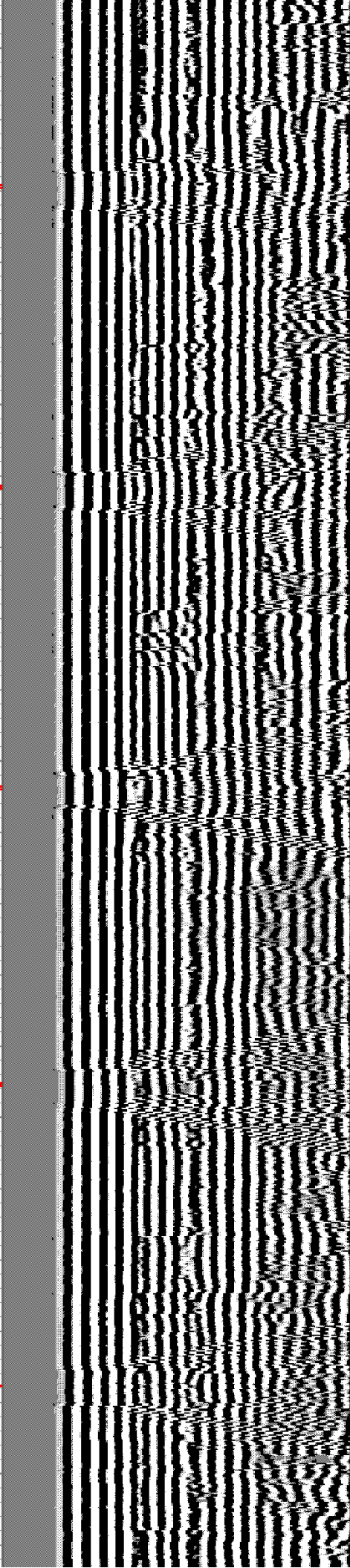
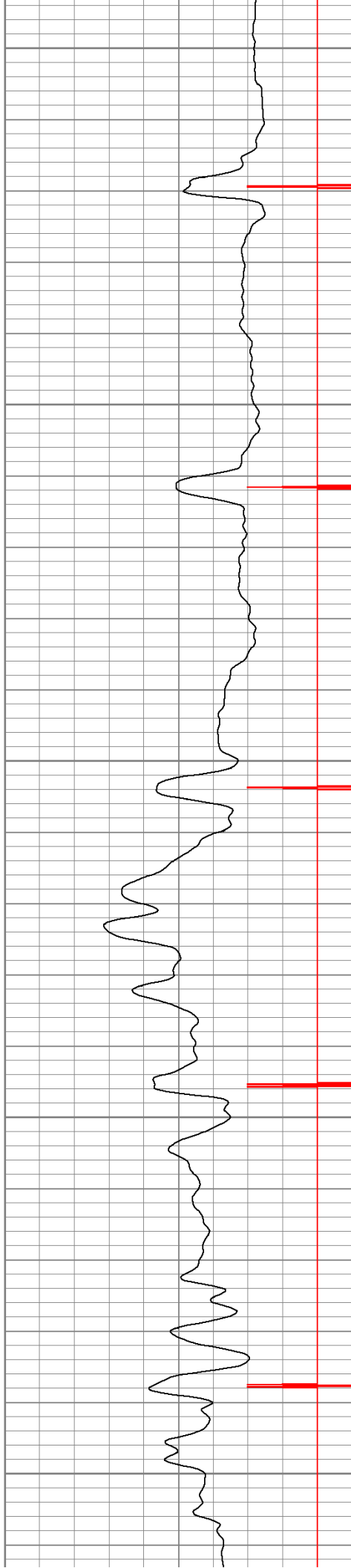
2600

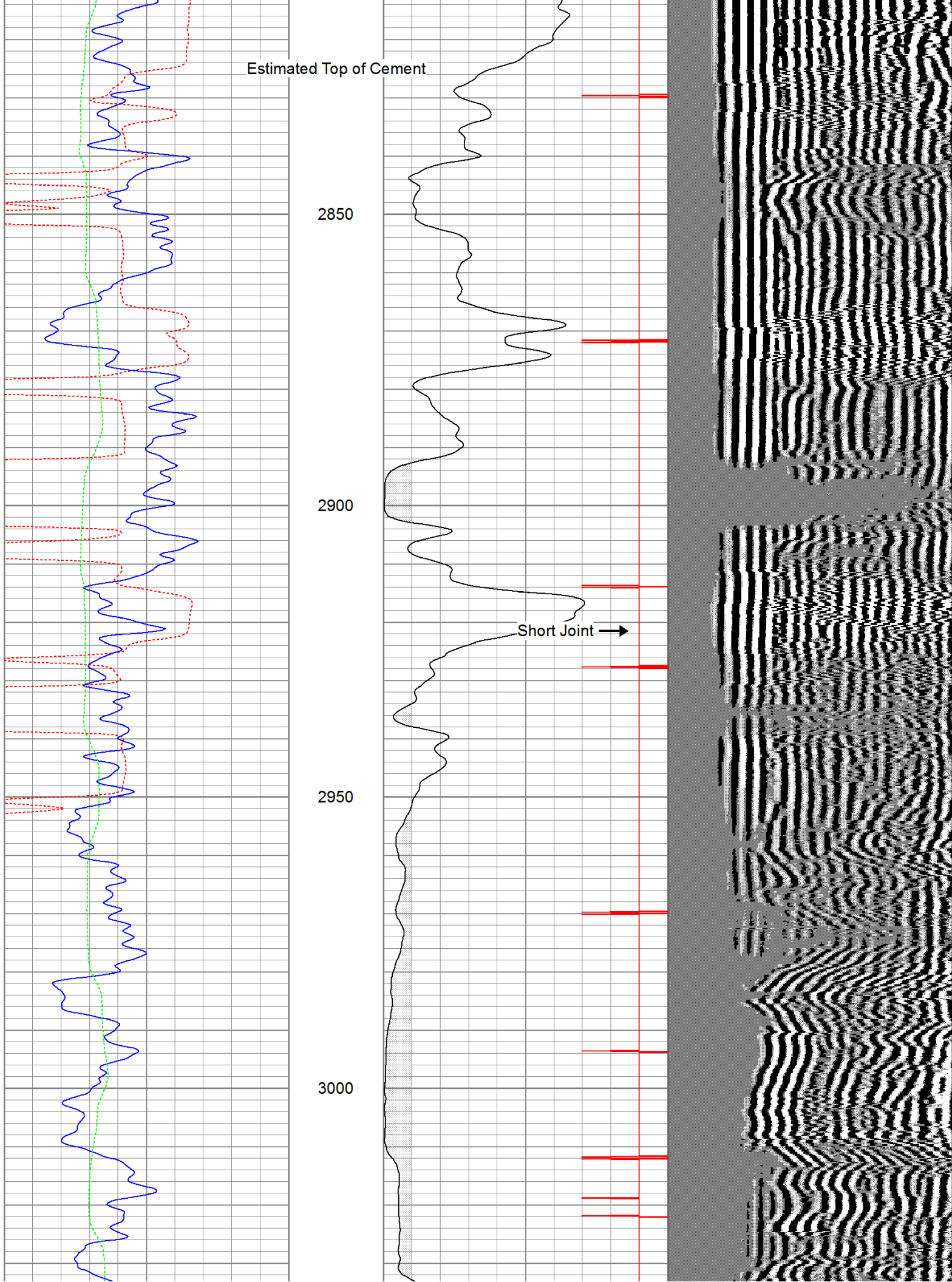
2650

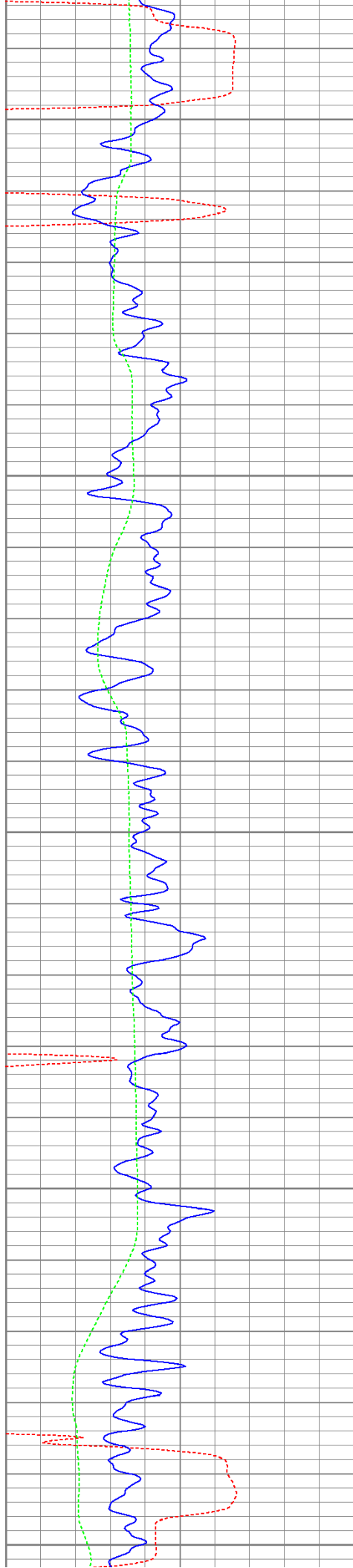
2700

2750

2800







3050

3100

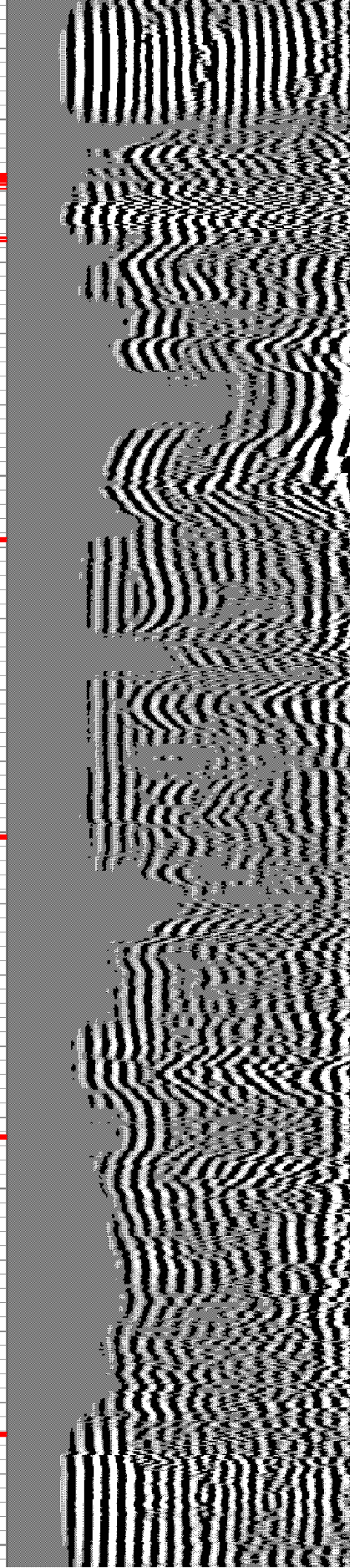
3150

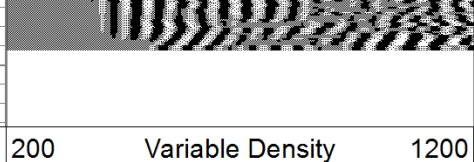
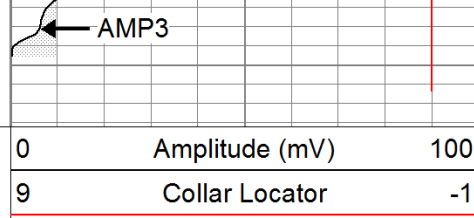
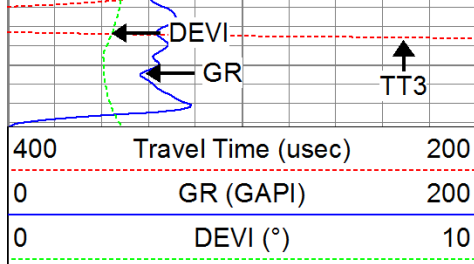
3200

3250

ECP →

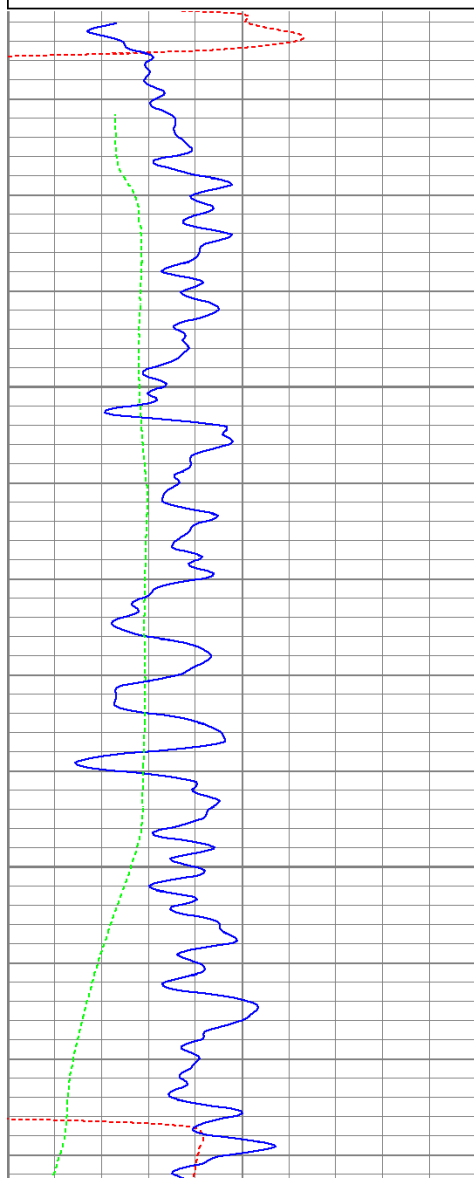
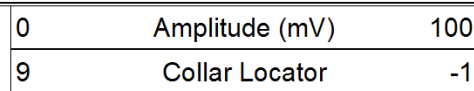
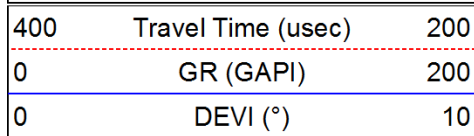
↑
CCL





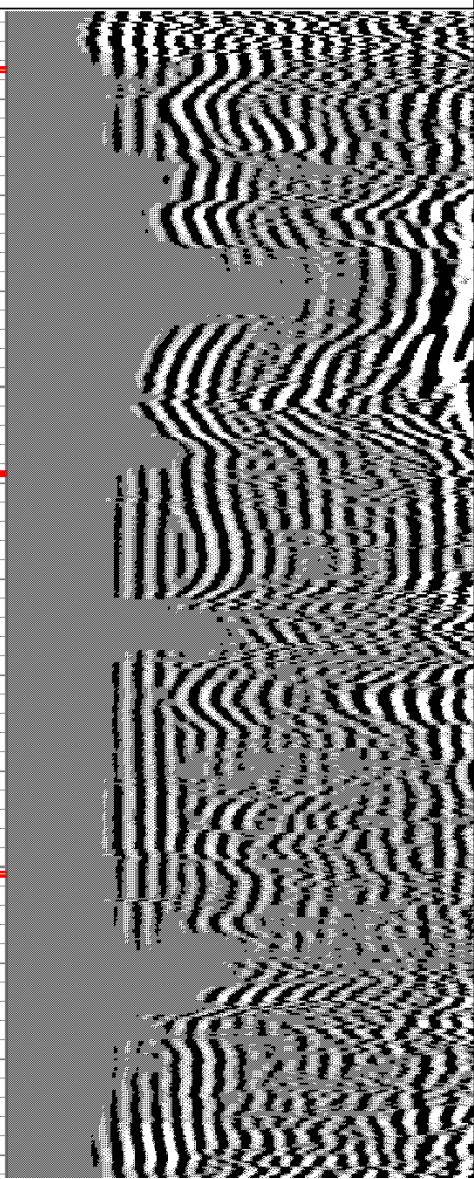
Repeat Pass

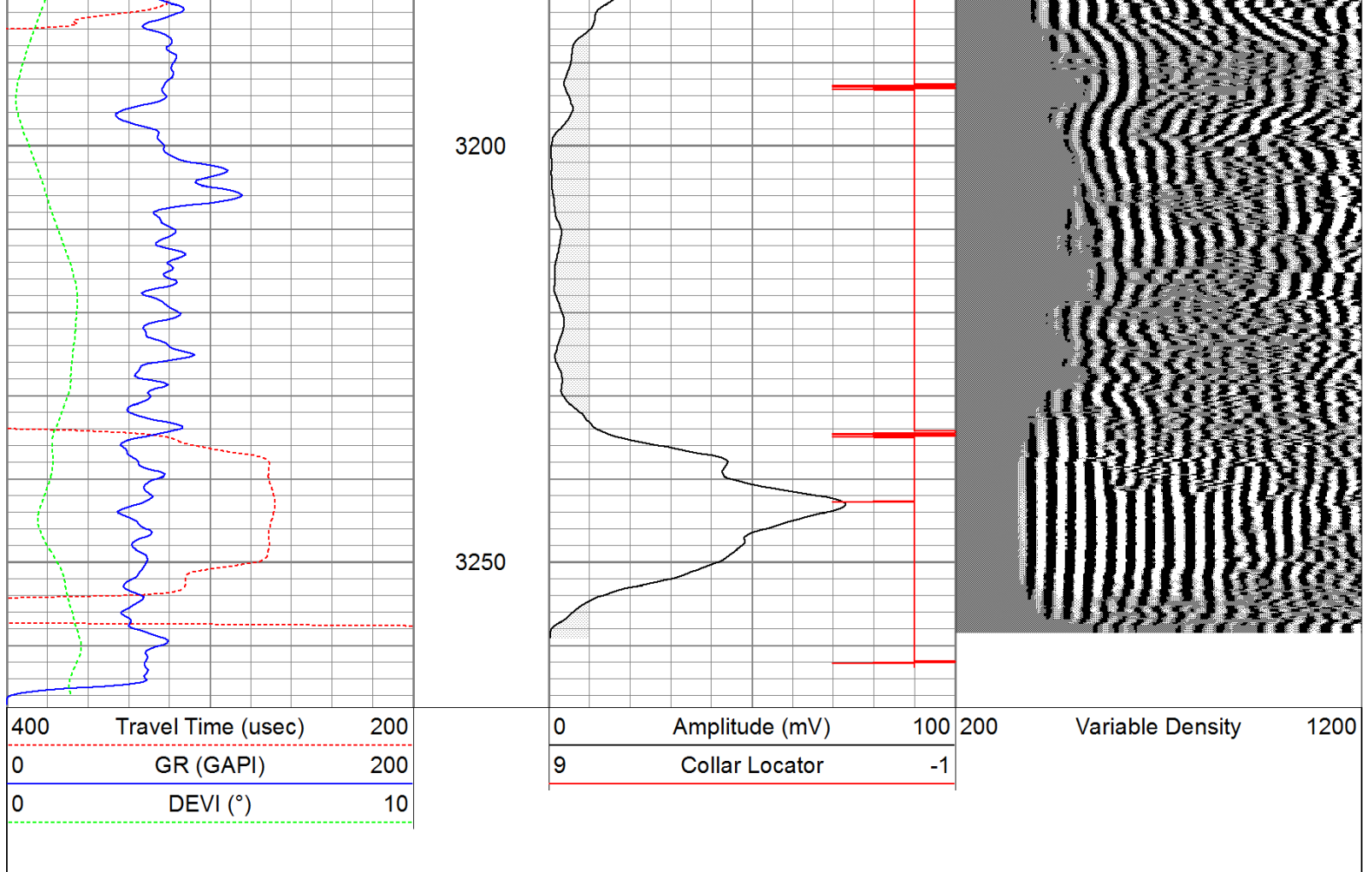
Database File: cedar72511b.db
 Dataset Pathname: pass1
 Presentation Format: cbldig
 Dataset Creation: Mon Jul 25 09:14:23 2011 by Log Open-Cased 110302
 Charted by: Depth in Feet scaled 1:240



3100

3150





Calibration Report					
Database File:	cedar72511b.db				
Dataset Pathname:	pass1				
Dataset Creation:	Mon Jul 25 09:14:23 2011 by Log Open-Cased 110302				
Gamma Ray Calibration Report					
Serial Number:	080616				
Tool Model:	275D_INC				
Performed:	Wed May 04 17:31:09 2011				
Calibrator Value:	200.0	GAPI			
Background Reading:	50.0	cps			
Calibrator Reading:	250.0	cps			
Sensitivity:	1.0000	GAPI/cps			
Inclinometer Calibration Report					
Performed:	Wed May 04 17:39:54 2011				
	Low Read.	High Read.	Low Ref.	High Ref.	
X Accelerometer	-3585.20	3595.40	-1.00	1.00	gee
Y Accelerometer	-3619.40	3520.00	-1.00	1.00	gee
Z Accelerometer					
Cement Bond Log Calibration Report					

