

Company		Pioneer Natural Resources	
Well	Cedar 31-19		
Field	Purgatoire River		
County	Las Animas	State	Colorado
Location:		APL # : 05 071 09714 00	Other Services
SEC 19 TWP 32S RGE 67W		716' FNL & 2076' FEL	DEVI
Permanent Datum	Ground Level	Elevation	8151'
Log Measured From	Kelly Bushing 4' AGL	K.B. 8155'	D.F. -----
Drilling Measured From	Kelly Bushing	G.L. 8151'	
Date	7-18-11		
Run Number	ONE		
Depth Driller	3314'		
Depth Logger	2993'		
Bottom Logged Interval	2991'		
Top Log Interval	Surface		
Open Hole Size	7 7/8		
Type Fluid	water		
Density / Viscosity	///		
Max. Recorded Temp.	///		
Estimated Cement Top	///		
Time Well Ready	7:00 A.M.		
Time Logger on Bottom	9:30 A.M.		
Equipment Number	T590		
Location	Trinidad		
Recorded By	C. Sisneros		
Witnessed By	Mr. Roger Savell		
Borehole Record		Tubing Record	
Run Number	Bit	From	To
Casing Record	Size	Wgt/Ft	Top Bottom
Surface String	8 5/8"		00 612'
Prot. String			
Production String	5 1/2"		00 TD
Liner			

<<< Fold Here >>>

All interpretations are opinions based on inferences from electrical or other measurements and we cannot and do not guarantee the accuracy or correctness of any interpretation, and we shall not, except in the case of gross or willful negligence on our part, be liable or responsible for any loss, costs, damages, or expenses incurred or sustained by anyone resulting from any interpretation made by any of our officers, agents or employees. These interpretations are also subject to our general terms and conditions set out in our current Price Schedule.

Comments

Main Pass logged under 1500 PSI.

Directions:

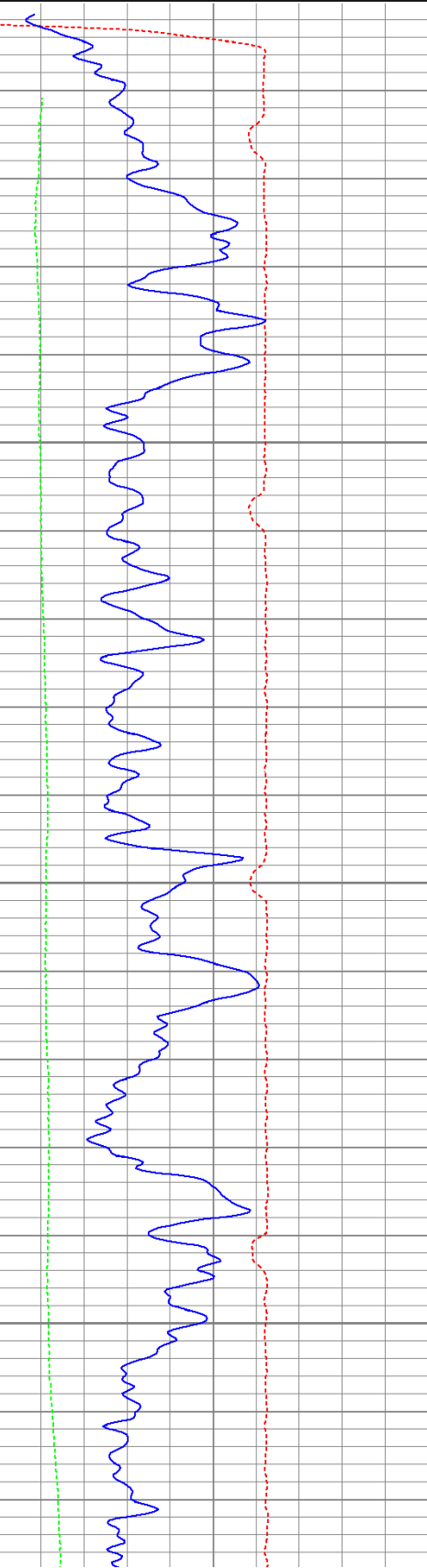
Wet canyon, seventh left after fire station, go over yellow cattle gaurd, stay dtraight, drive past the lightning location, next right, go thru double green gates, drive past A frame cabin, drive thru double green gates, at Y Stay left, stay on road, dead end on location.

Database File: cedar71711b.db
Dataset Pathname: pass4.1
Presentation Format: cbldig
Dataset Creation: Mon Jul 18 11:01:14 2011 by Calc Open-Cased 110302
Charted by: Depth in Feet scaled 1:240

400	Travel Time (usec)	200
0	GR (GAPI)	200
0	DEVI (°)	10

0	Amplitude (mV)	100
9	Collar Locator	-1

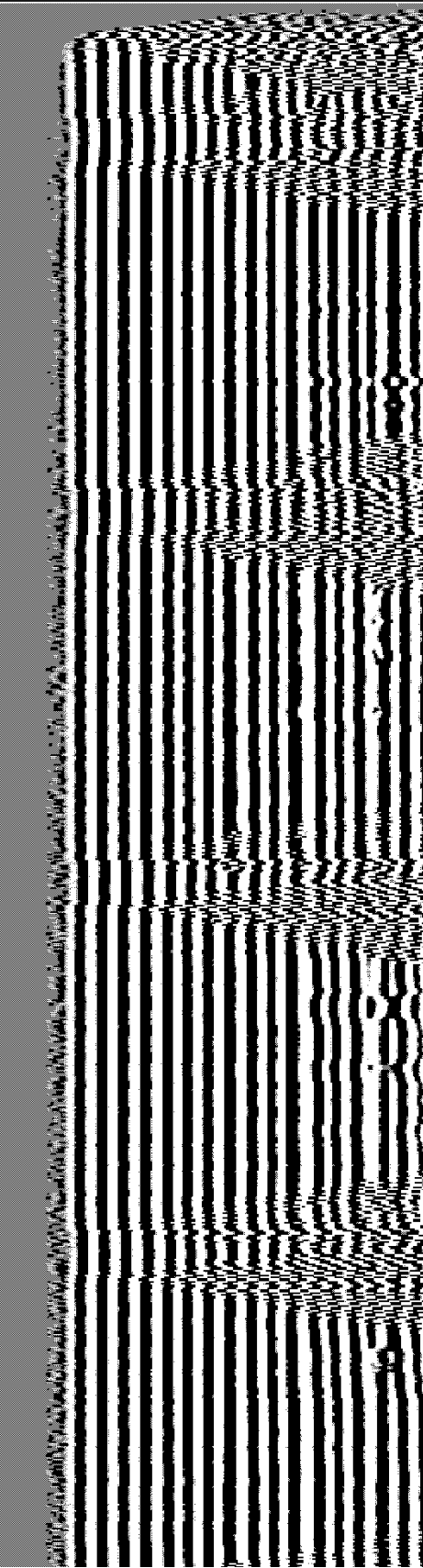
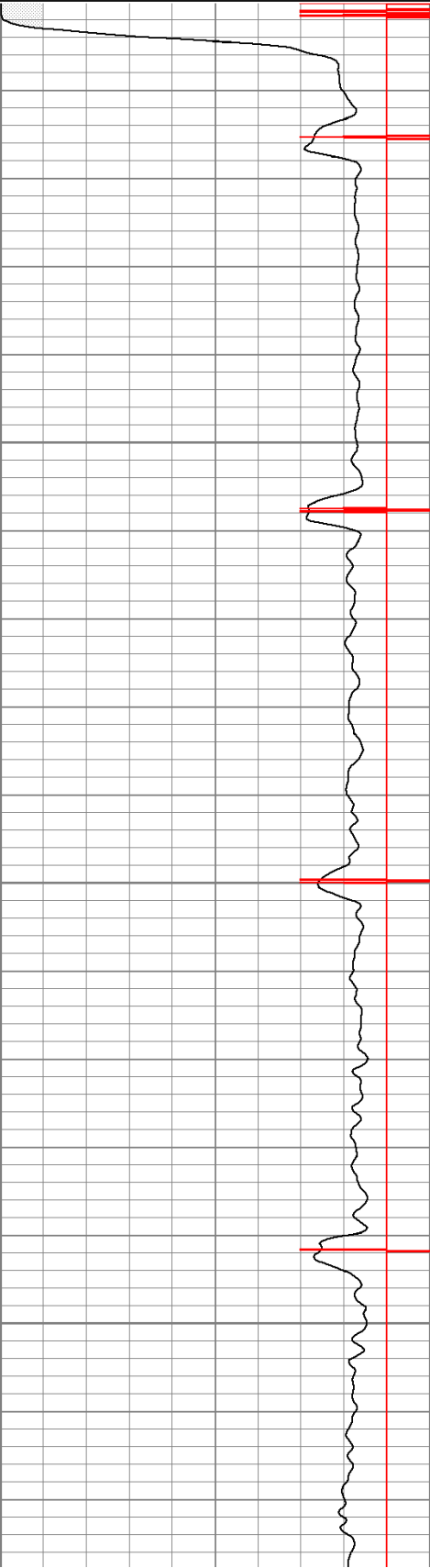
200 Variable Density 1200

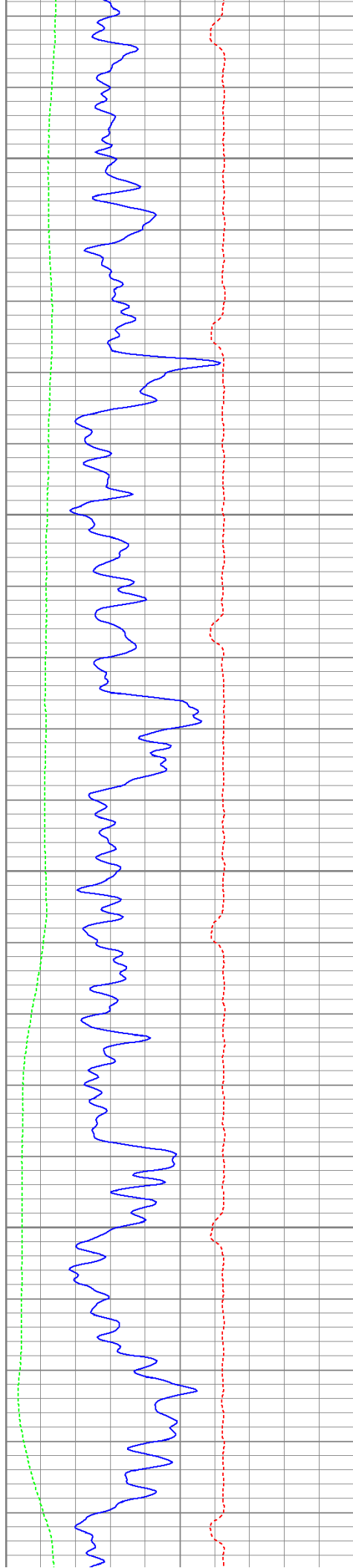


50

100

150



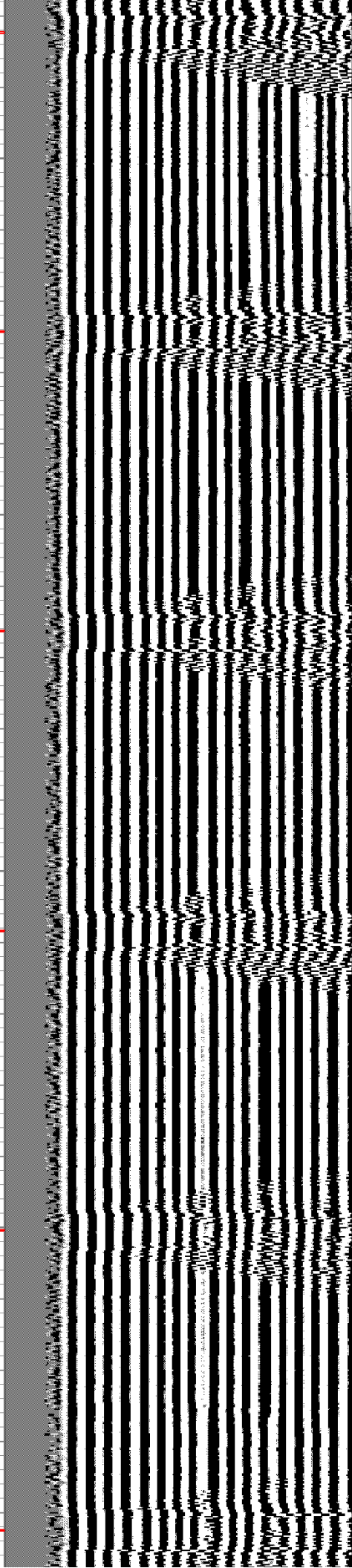
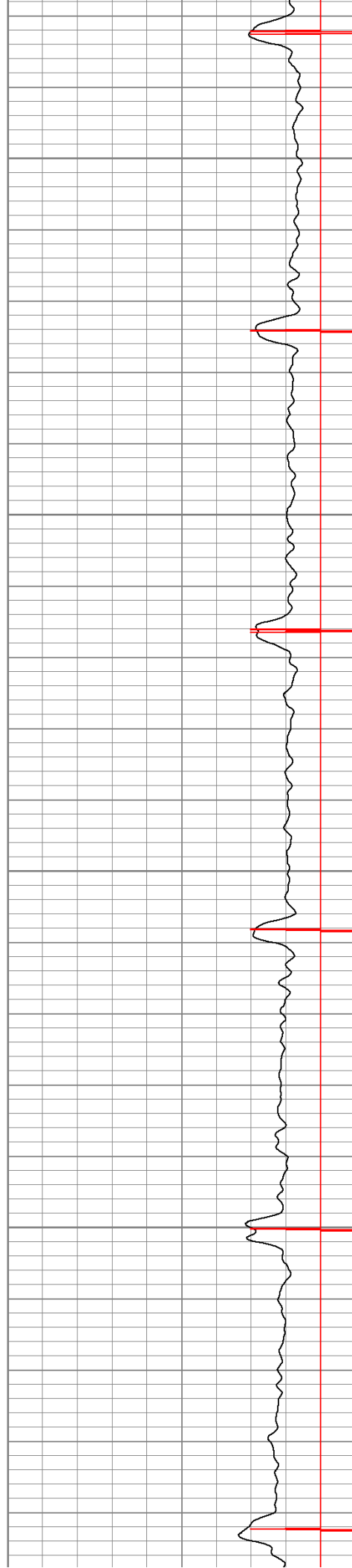


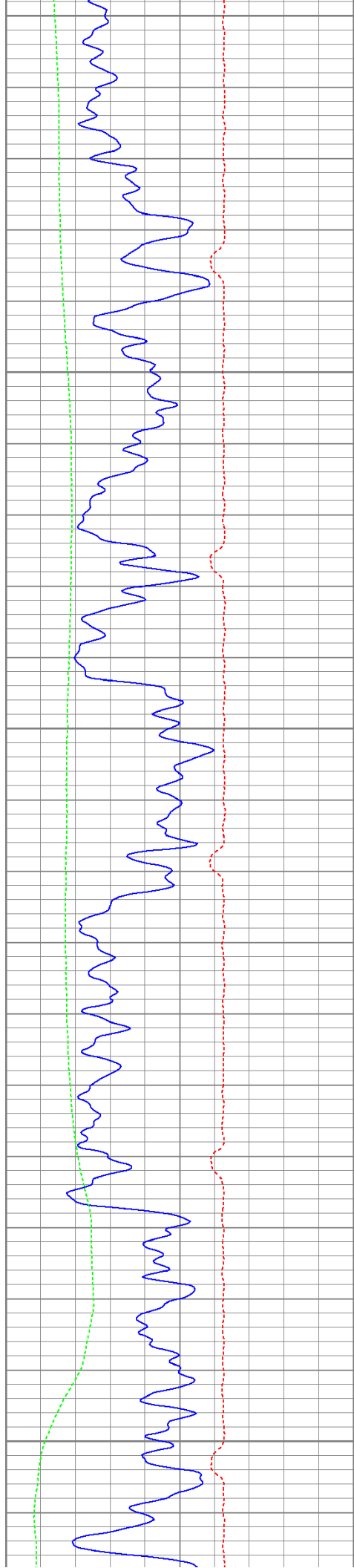
200

250

300

350





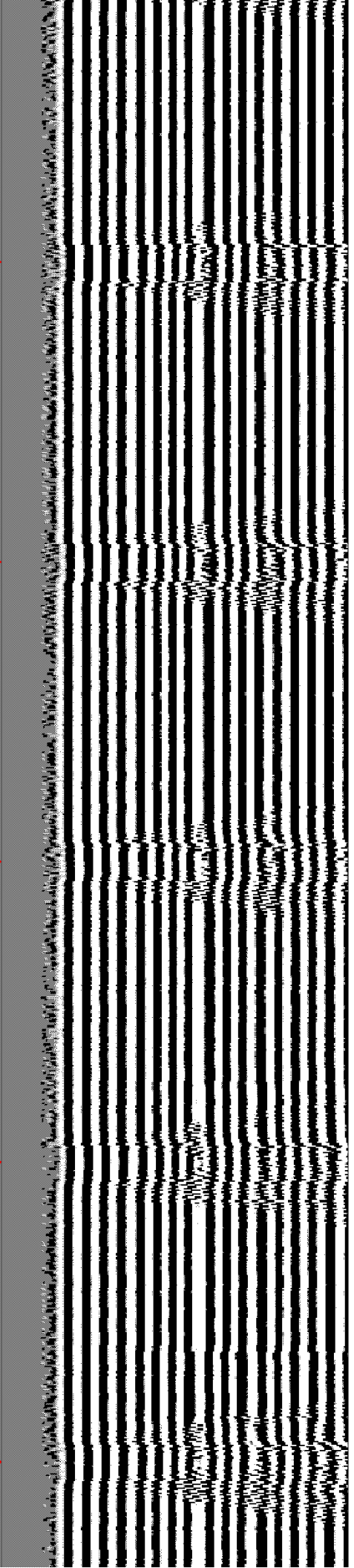
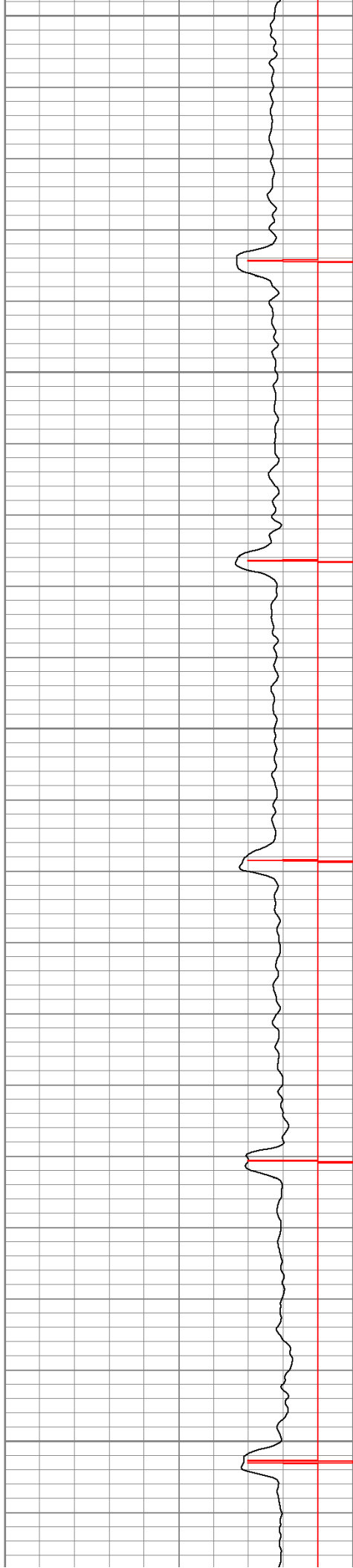
400

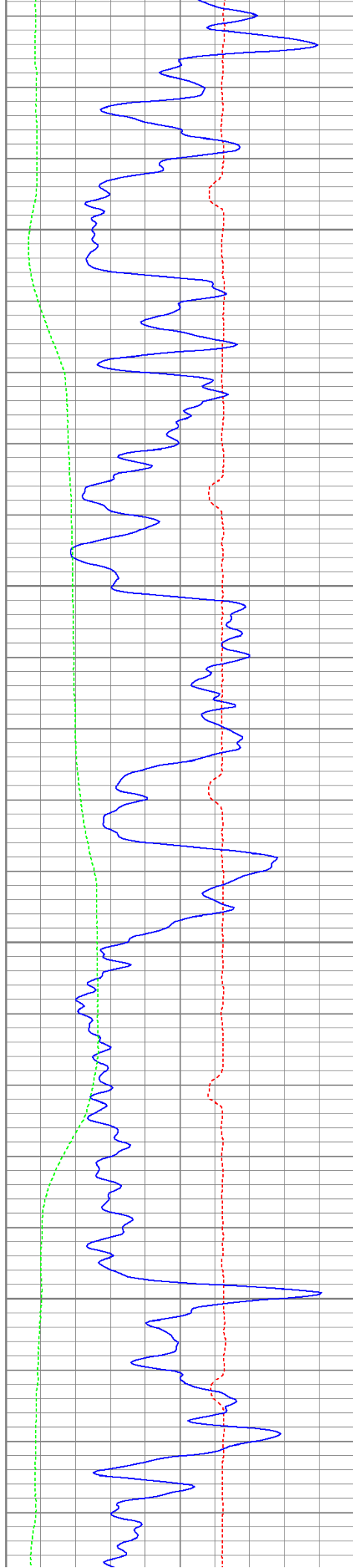
450

500

550

600



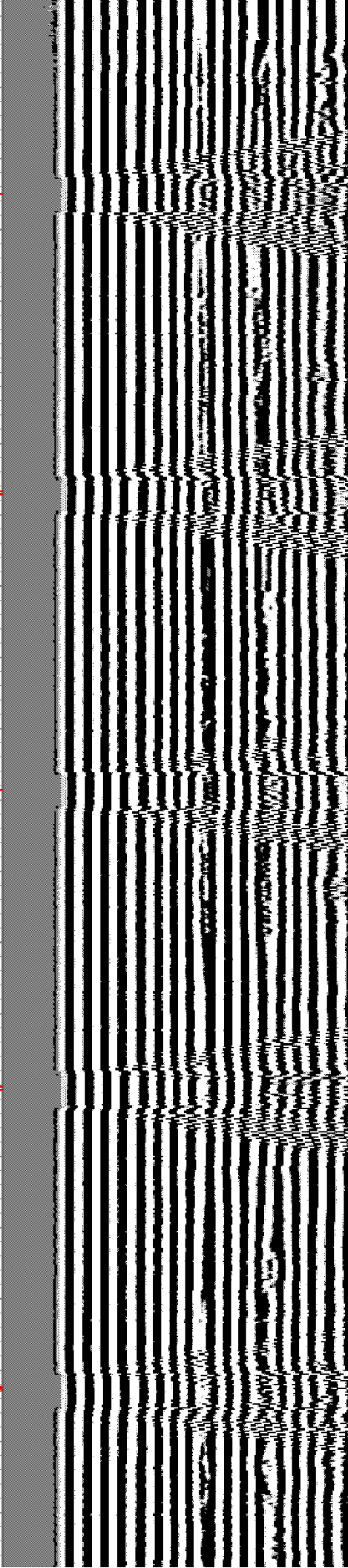
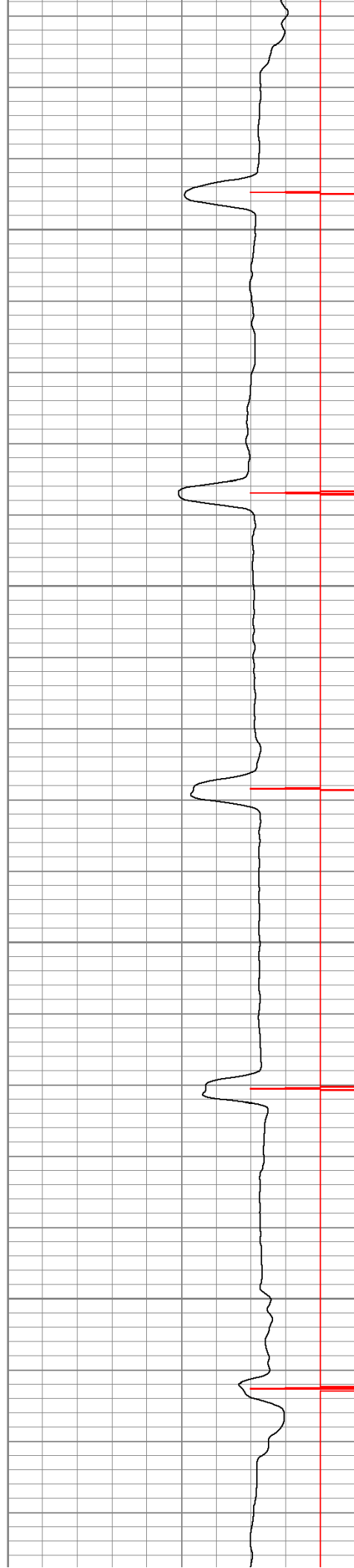


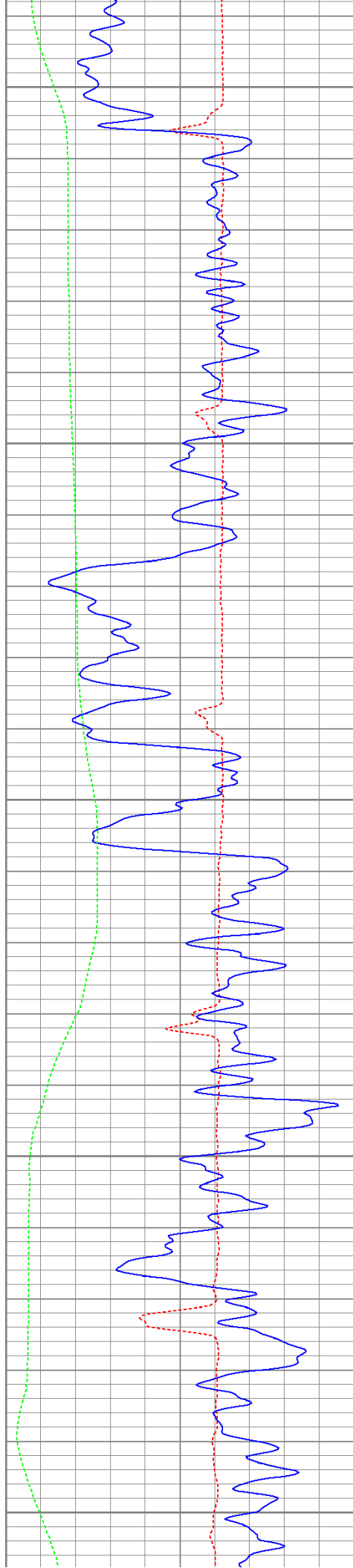
650

700

750

800





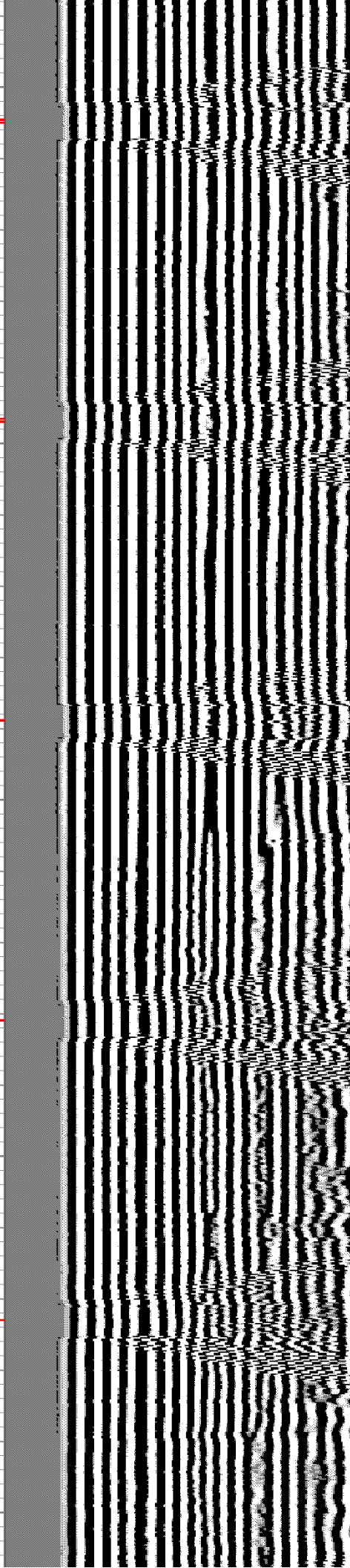
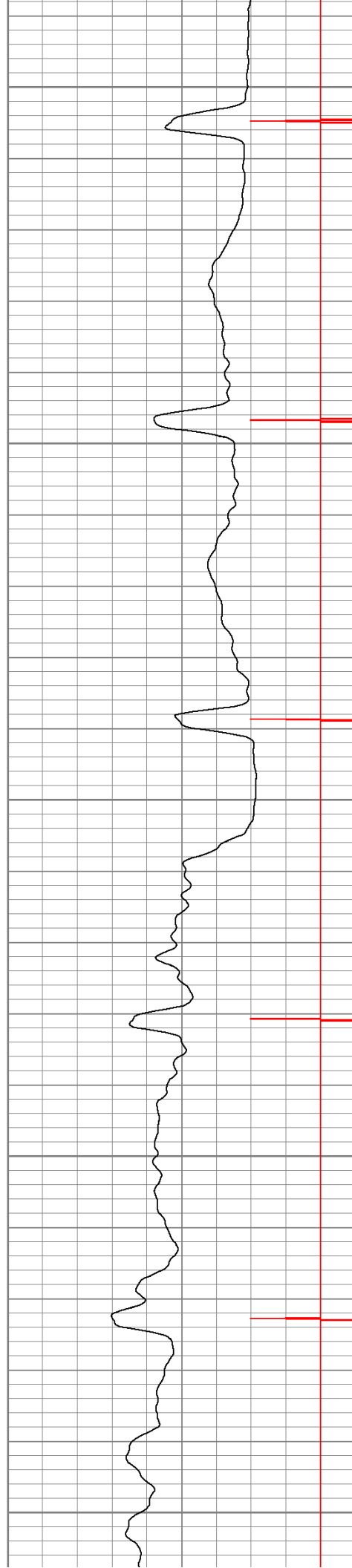
850

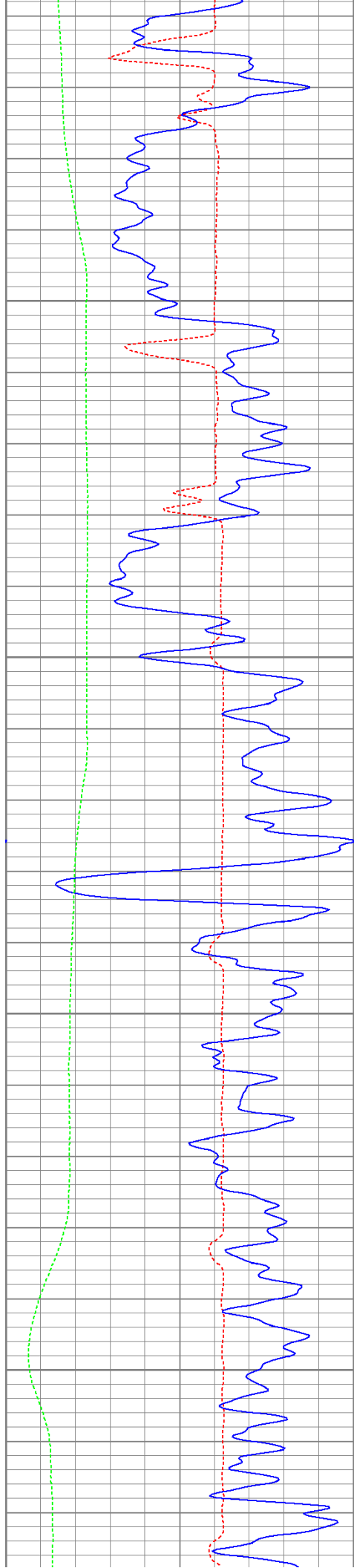
900

950

1000

1050



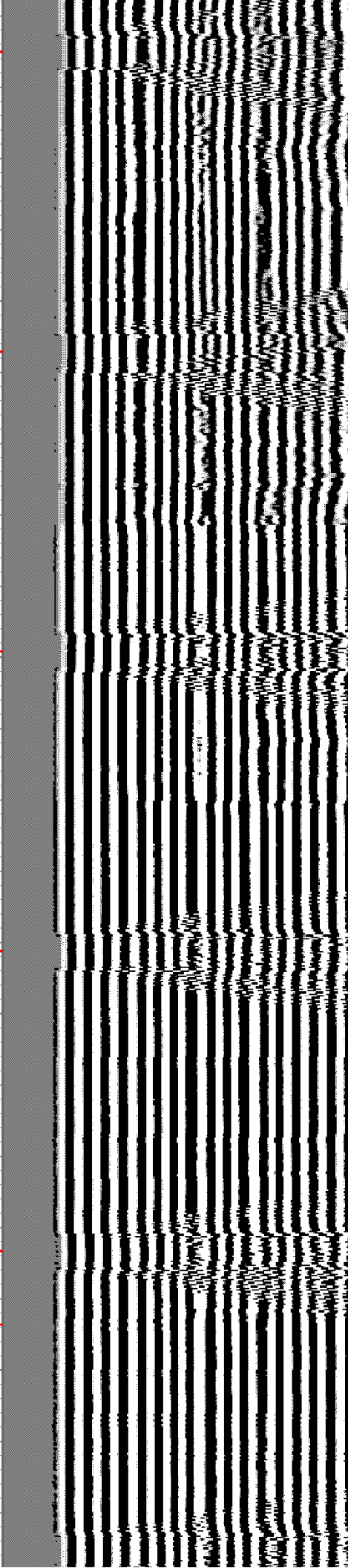


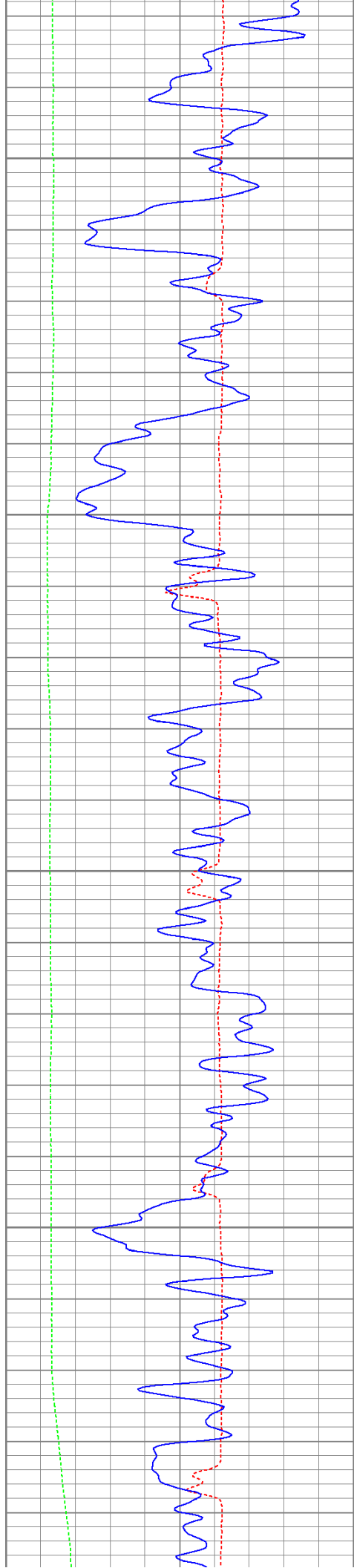
1100

1150

1200

1250



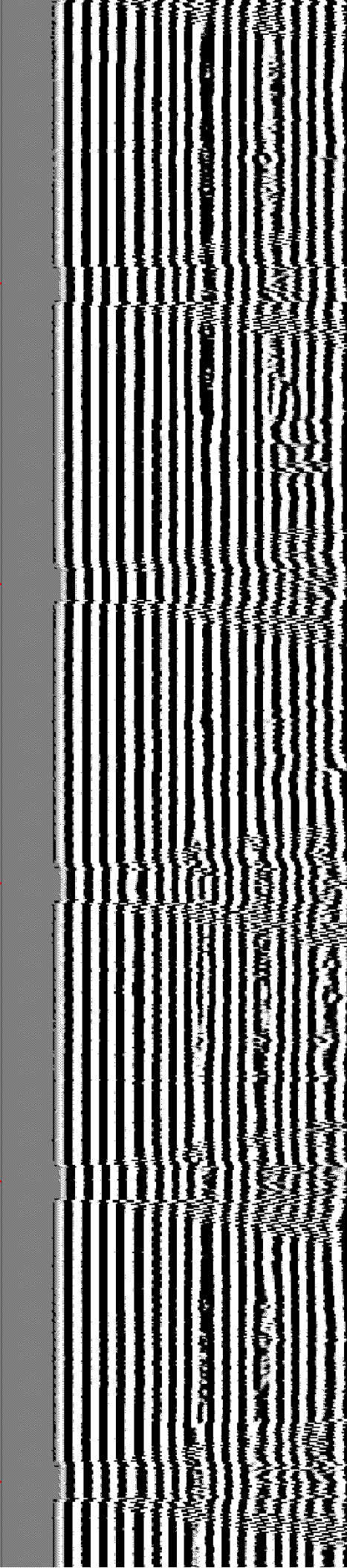
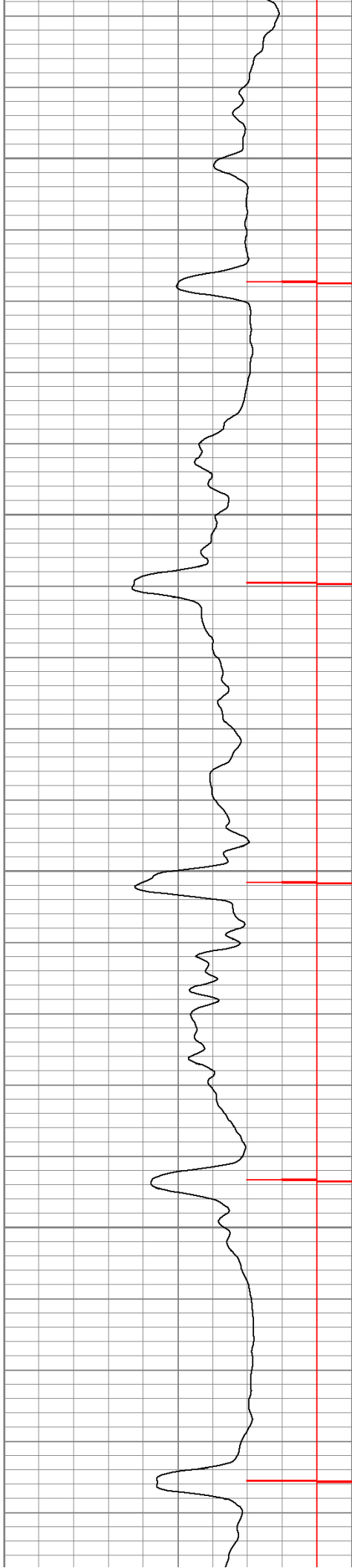


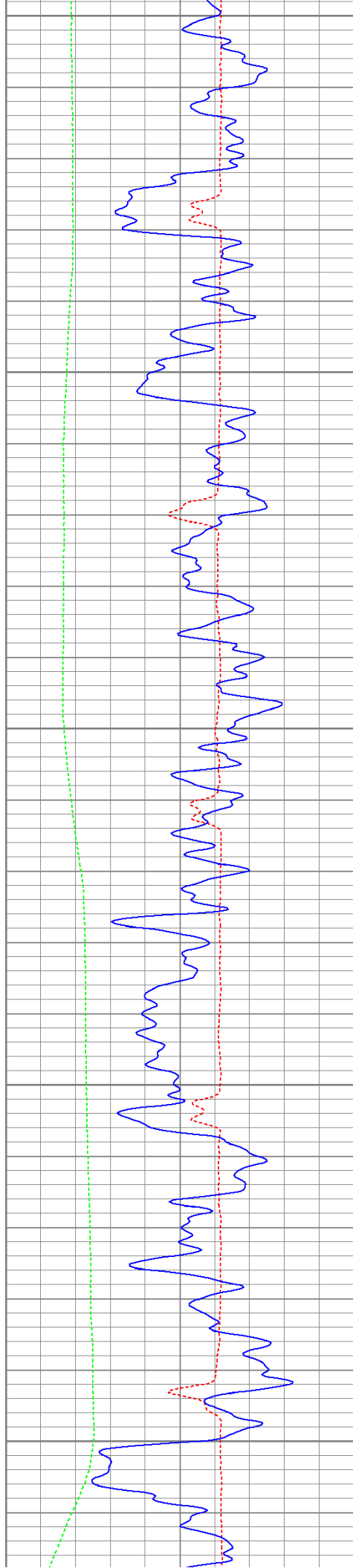
1300

1350

1400

1450





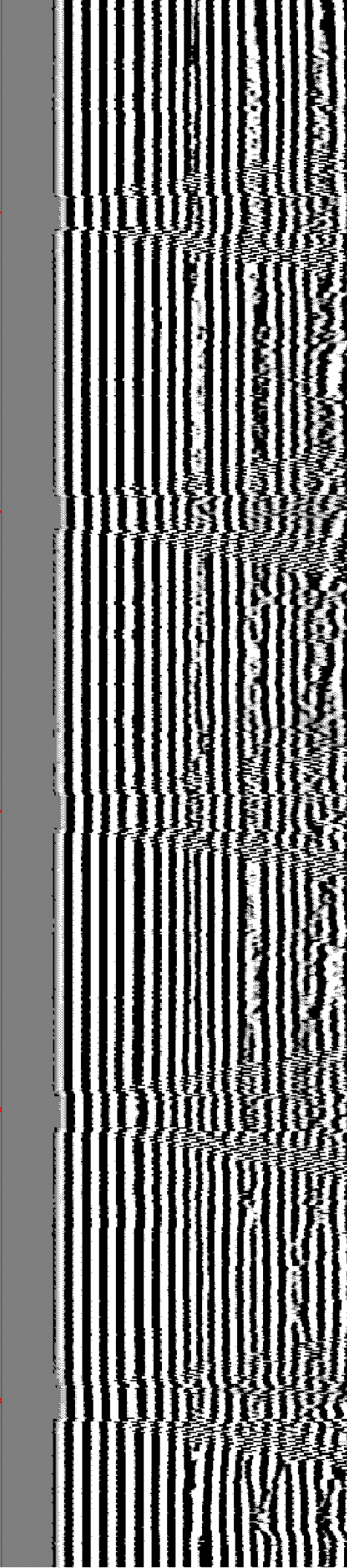
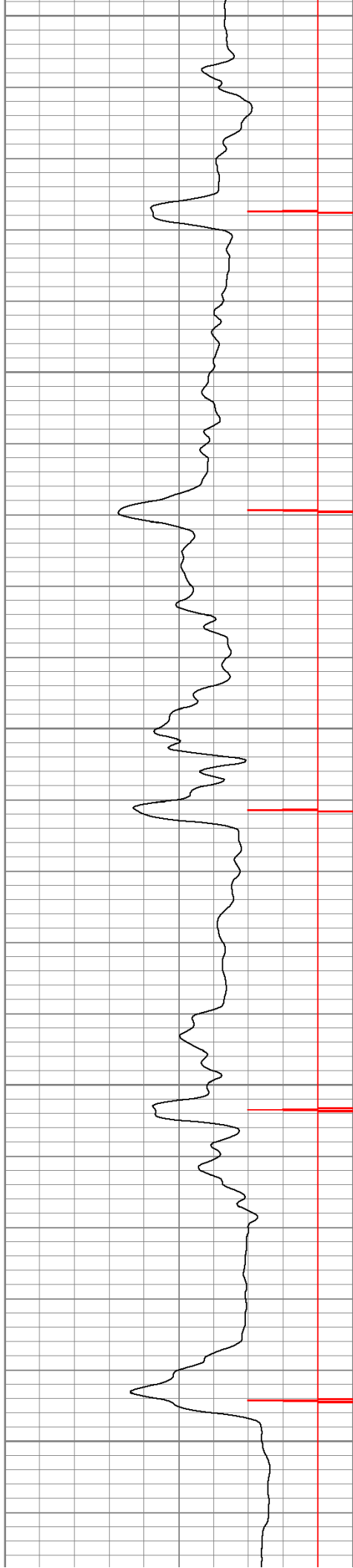
1500

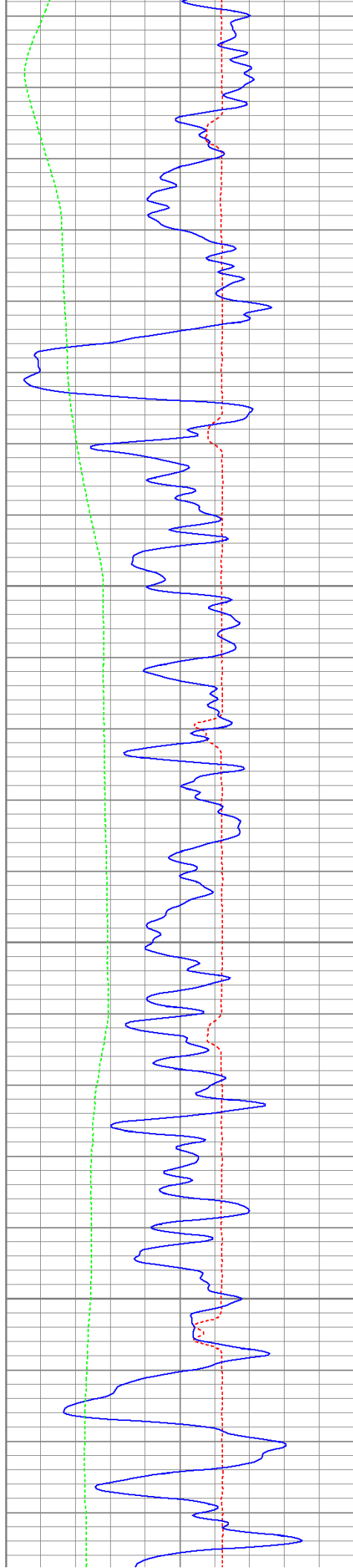
1550

1600

1650

1700



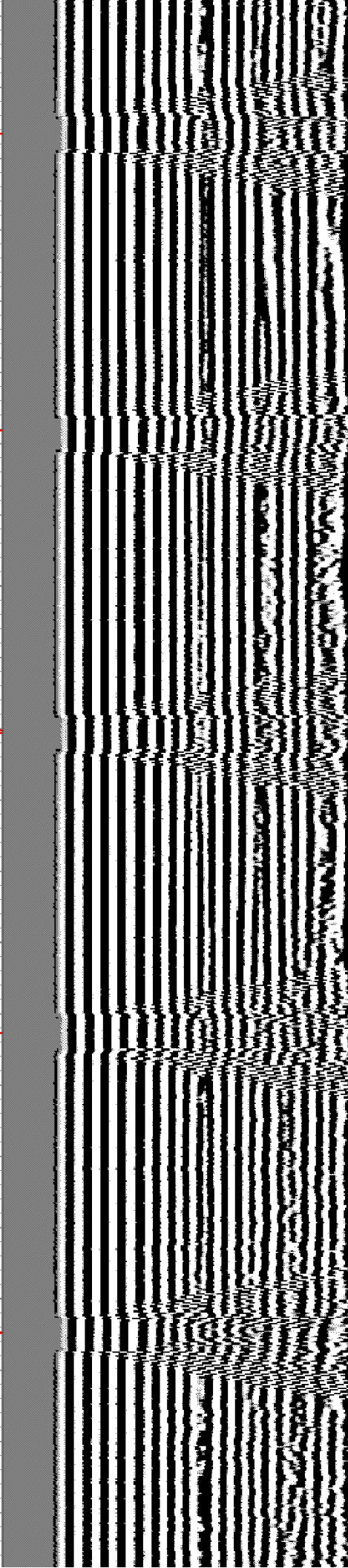
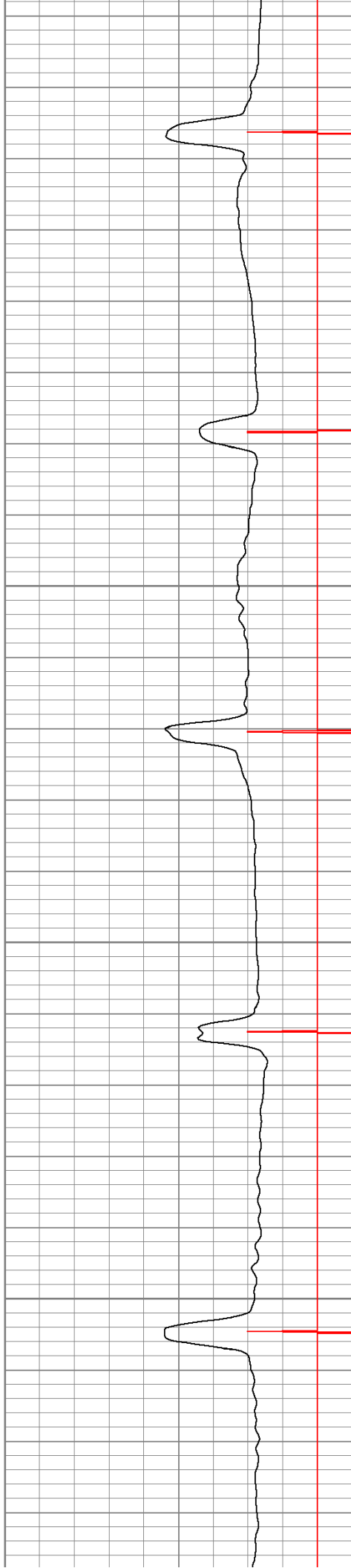


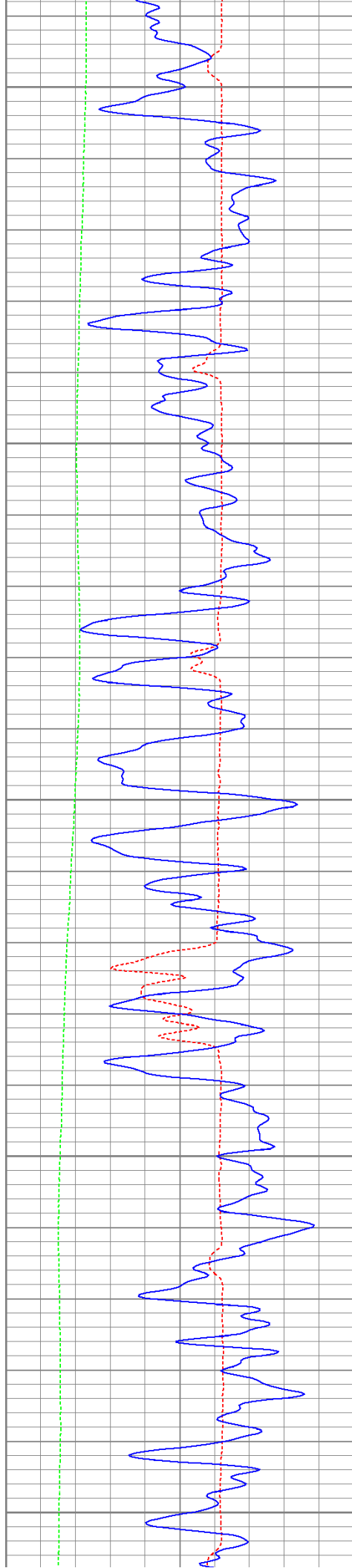
1750

1800

1850

1900





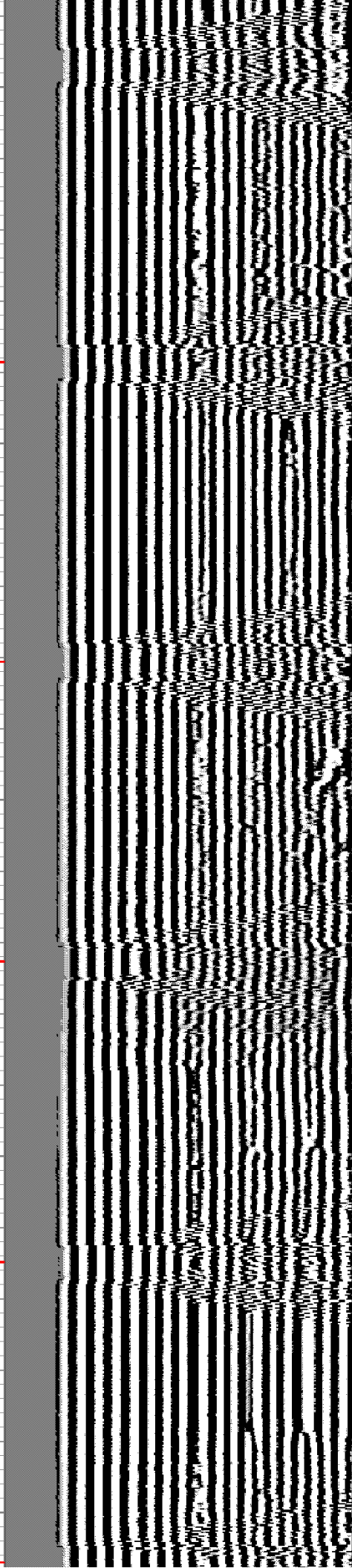
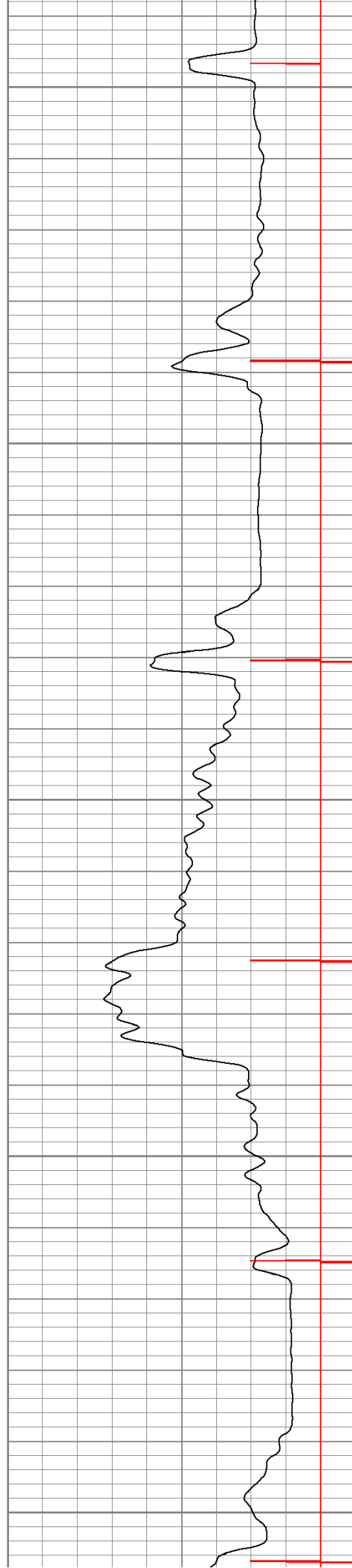
1950

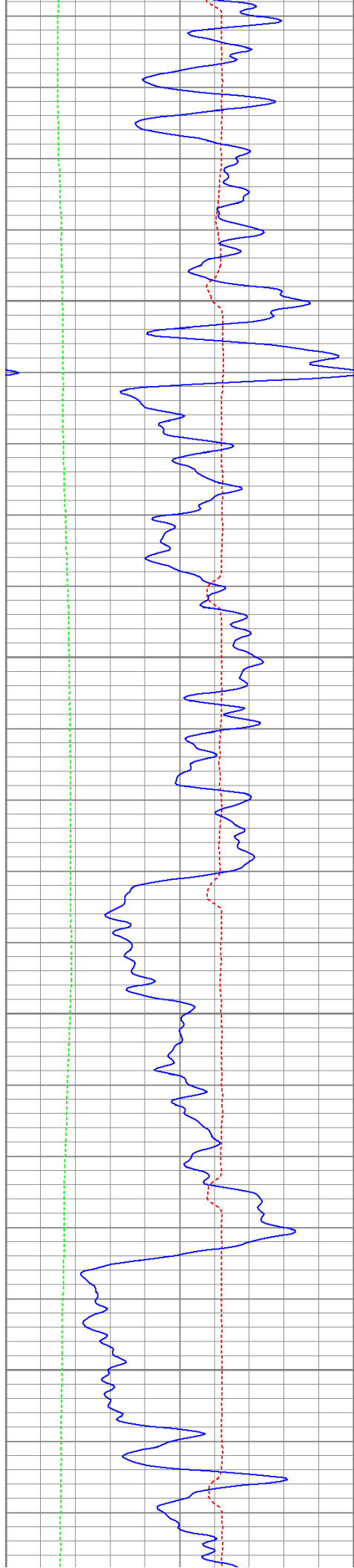
2000

2050

2100

2150



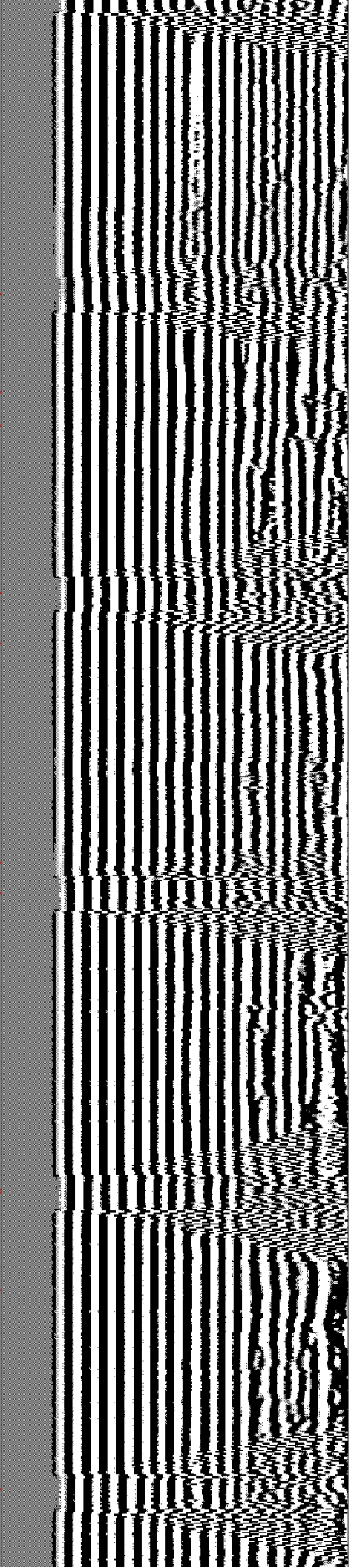


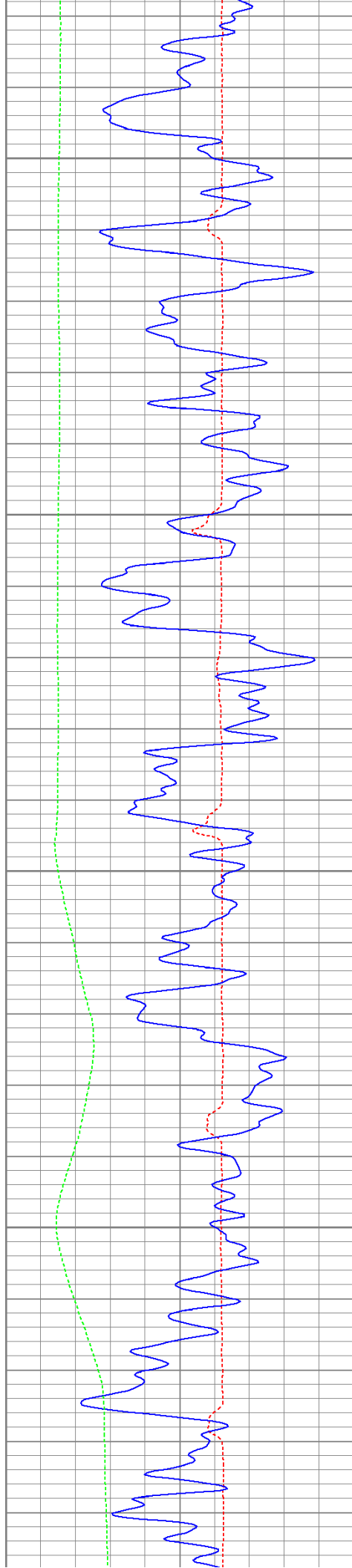
2200

2250

2300

2350



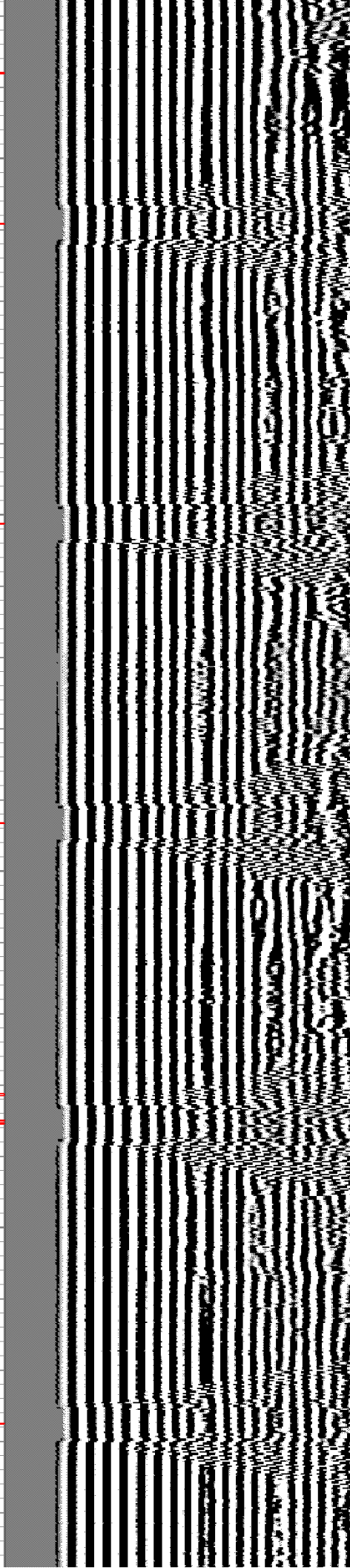
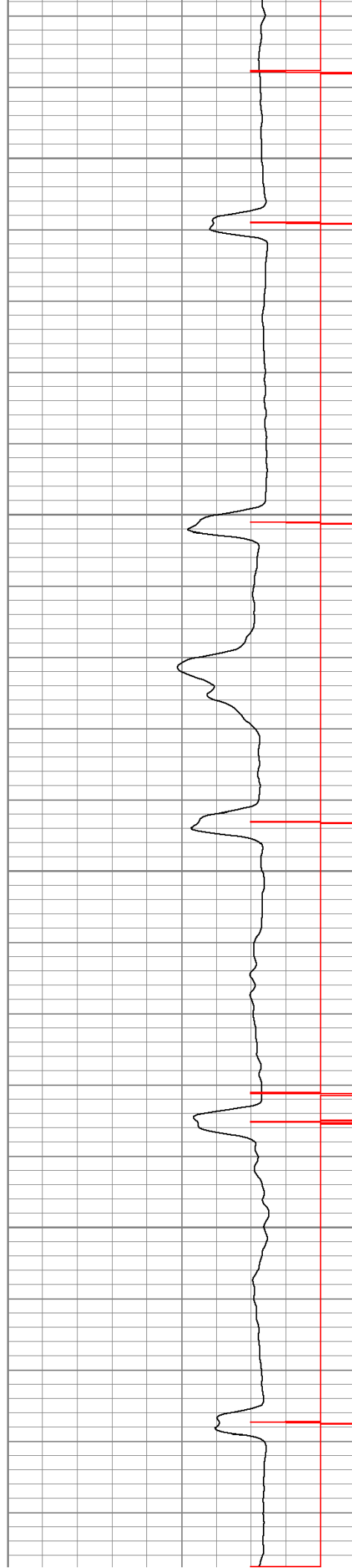


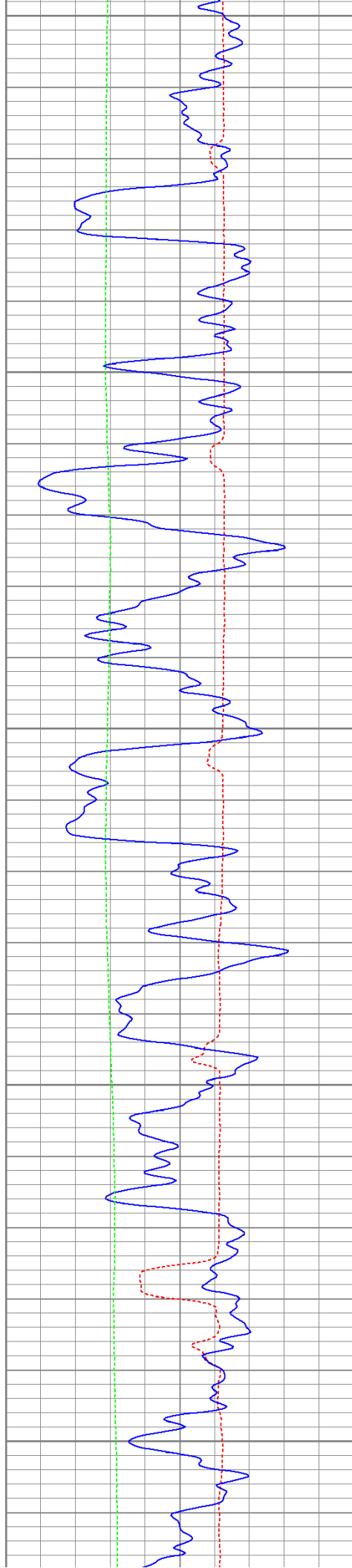
2400

2450

2500

2550





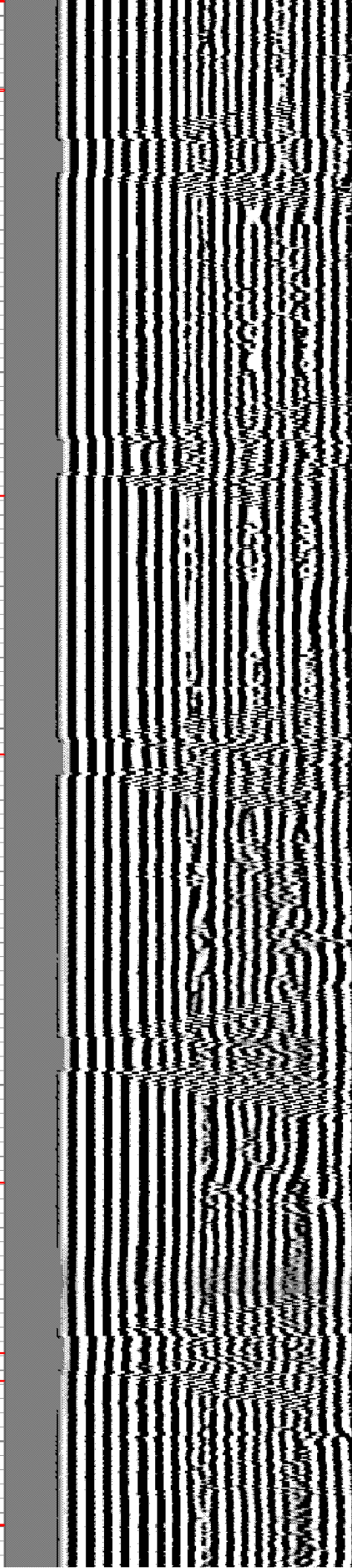
2600

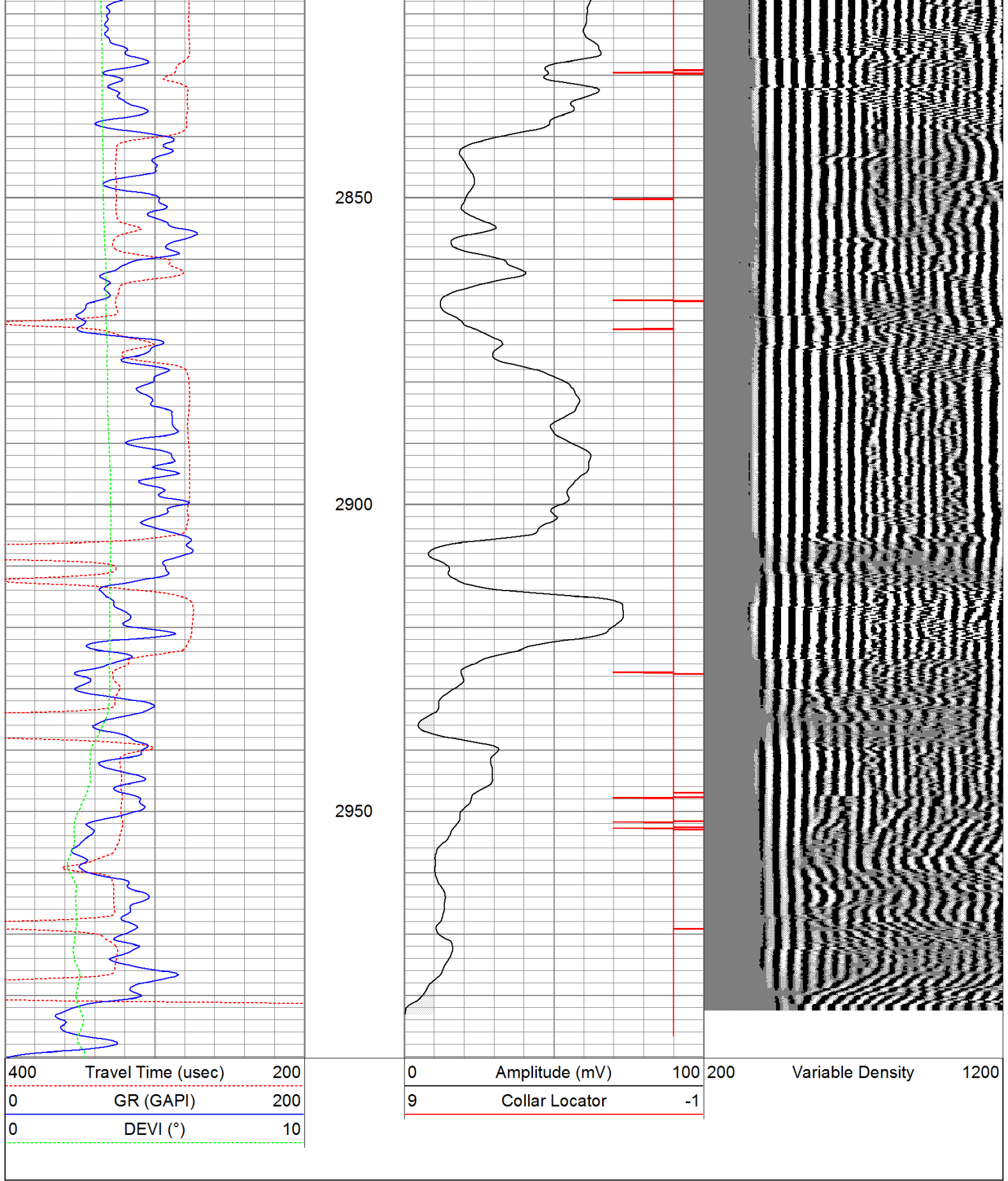
2650

2700

2750

2800



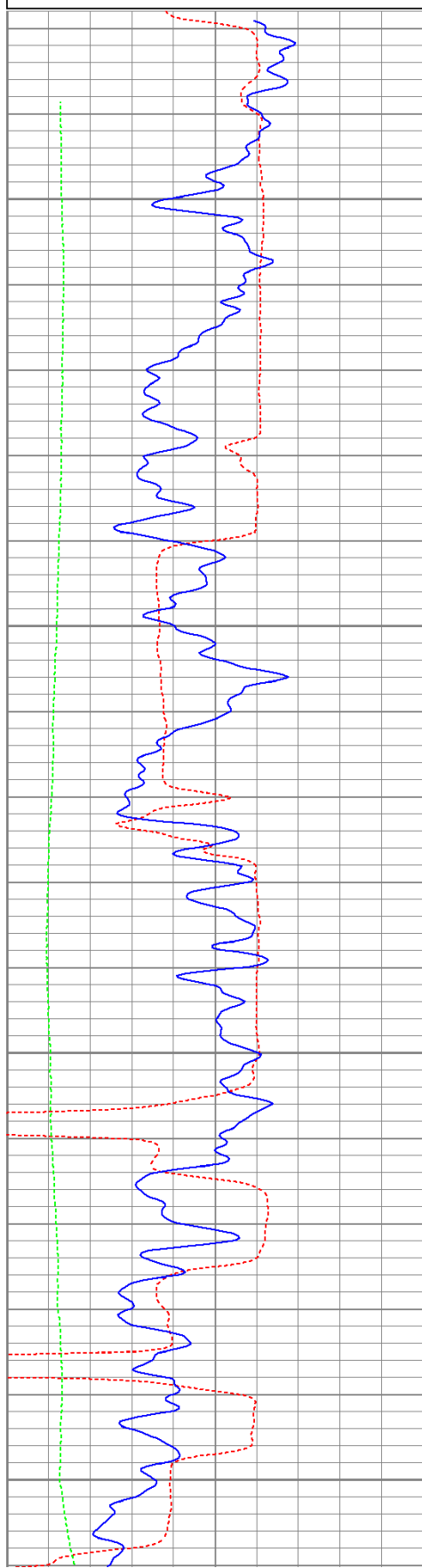


Database File: cedar71711b.db
Dataset Pathname: pass3.1
Presentation Format: cbldig
Dataset Creation: Mon Jul 18 11:11:25 2011 by Calc Open-Cased 110302
Charted by: Depth in Feet scaled 1:240

400	Travel Time (usec)	200
0	GR (GAPI)	200
0	DEVI (°)	10

0	Amplitude (mV)	100
9	Collar Locator	-1

200 Variable Density 1200

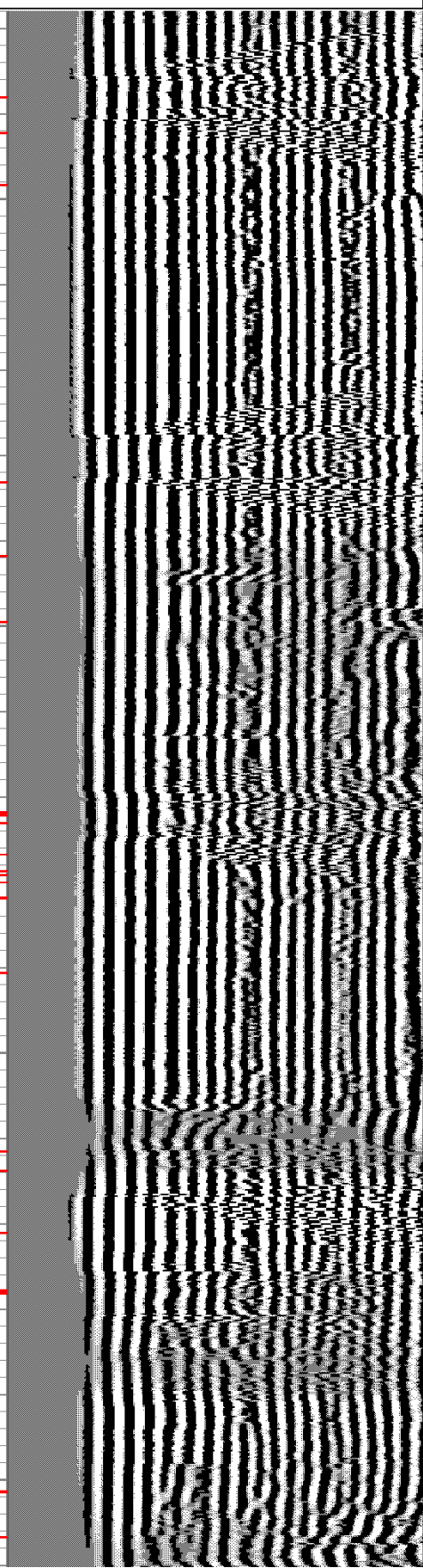
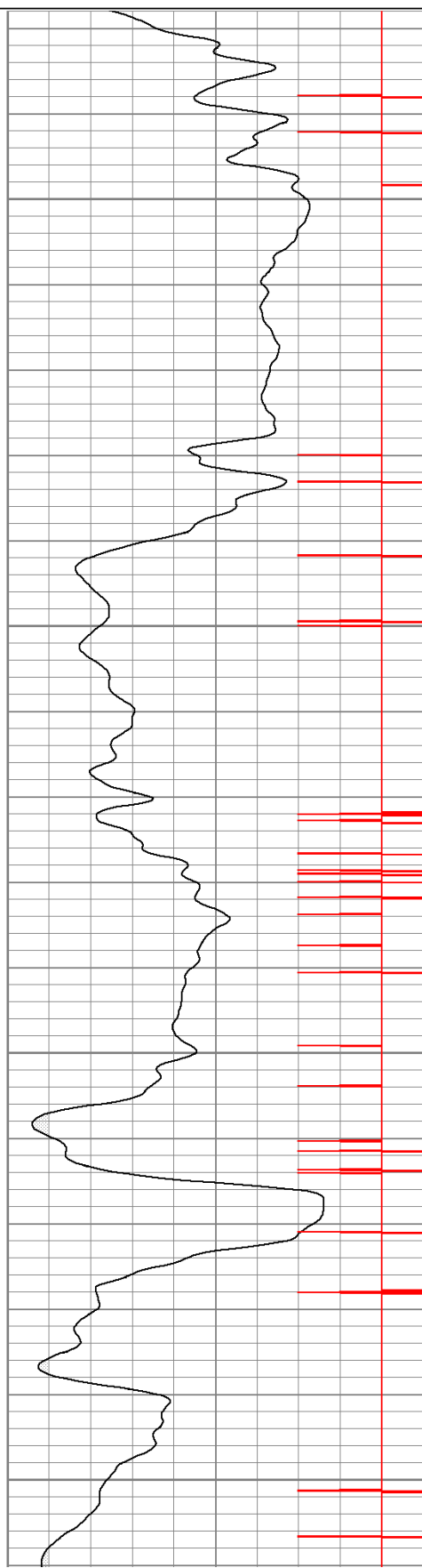


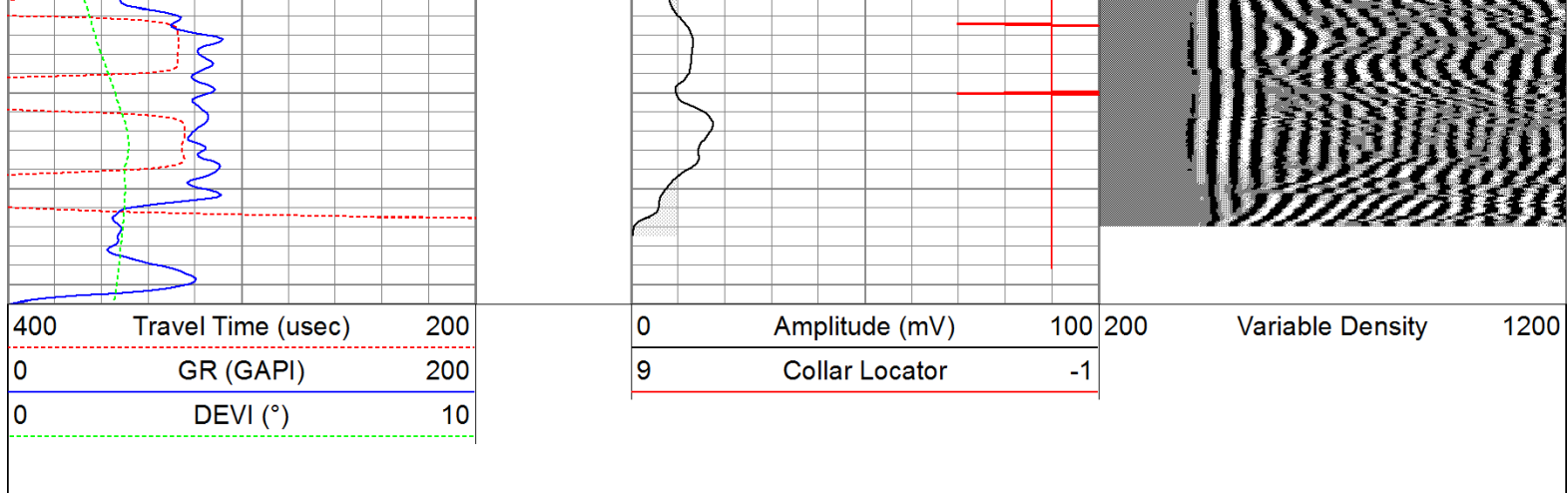
2800

2850

2900

2950





Calibration Report

Database File: cedar71711b.db
Dataset Pathname: pass1
Dataset Creation: Mon Jul 18 09:11:57 2011 by Log Open-Cased 110302

Gamma Ray Calibration Report			
Serial Number:	080616		
Tool Model:	275D_INC		
Performed:	Wed May 04 17:31:09 2011		
Calibrator Value:	200.0	GAPI	
Background Reading:	50.0	cps	
Calibrator Reading:	250.0	cps	
Sensitivity:	1.0000	GAPI/cps	

Inclinometer Calibration Report					
Performed:	Wed May 04 17:39:54 2011				
	Low Read.	High Read.	Low Ref.	High Ref.	
X Accelerometer	-3585.20	3595.40	-1.00	1.00	gee
Y Accelerometer	-3619.40	3520.00	-1.00	1.00	gee
Z Accelerometer					

Cement Bond Log Calibration Report					
Serial Number:	081024				
Tool Model:	PROBEDIGITALCBL				
Performed:	Sat Jul 09 20:17:28 2011				
Depth:	79.0748	ft			
Casing Diameter:	5.5	in			
	3' Spacing		5' Spacing		
Signal Zero:	0		0		mV
Calibrated Amplitude:	85		85		mV
Reading at Signal Zero:	-0.0115234		-0.0109863		V
Reading in Free Pipe:	1.793		1.18887		V
Gain:	47.1039		70.842		
Offset:	0.542797		0.778293		

O.D. 2.75 in