



SUPERIOR
Hays,
Kansas

MICRO LOG

Company	MULL DRILLING COMPANY, INC.
Well	APC - MEDFORD STATE UNIT #1-9
Field	WILDCAT
County	CHEYENNE
State	COLORADO
Location:	AP1 # : 05-017-07706 398' FSL & 1083' FEL
SEC 9 TWP 16S RGE 46W	Other Services CDL/CNL/PE DIL/SONIC
Permanent Datum Log Measured From Drilling Measured From	GROUND LEVEL KELLY BUSHING 11' A.G.L. KELLY BUSHING
Elevation	4202 K.B. 4213 D.F. 4211 G.L. 4202
Date	11/7/11
Run Number	TWO
Depth Driller	5500
Depth Logger	5500
Bottom Logged Interval	5477
Top Log Interval	3600
Casing Driller	8 5/8" @ 526'
Casing Logger	526
Bit Size	7 7/8"
Type Fluid in Hole	CHEMICAL MUD
Density / Viscosity	9.3/55
pH / Fluid Loss	10.0/8.0
Source of Sample	FLOWLINE
Rim @ Meas. Temp	.900 @ 80F
Rmf @ Meas. Temp	.675 @ 80F
Rmc @ Meas. Temp	1.08 @ 80F
Source of Rmf / Rmc	MEASUREMENT
Rim @ BHT	.554 @ 130F
Time Circulation Stopped	5.5 HOURS
Time Logger on Bottom	9:45 P.M.
Maximum Recorded Temperature	130F
Equipment Number	0836
Location	HAYS, KANSAS
Recorded By	JEFF LUEBBERS
Witnessed By	MACKLIN ARMSTRONG

<<< Fold Here >>>

All interpretations are opinions based on inferences from electrical or other measurements and we cannot and do not guarantee the accuracy or correctness of any interpretation, and we shall not, except in the case of gross or willful negligence on our part, be liable or responsible for any loss, costs, damages, or expenses incurred or sustained by anyone resulting from any interpretation made by any of our officers, agents or employees. These interpretations are also subject to our general terms and conditions set out in our current Price Schedule.

Comments

CHEYENNE WELLS, CO. (JUNCTION OF OLD 40 & HWY 385) 9S. ON HWY 385 TO "RD. G", 12W. TO "RD. 34", 2 1/2S., TO "RD. D", 1W., 1N., 1/4 W. INTO

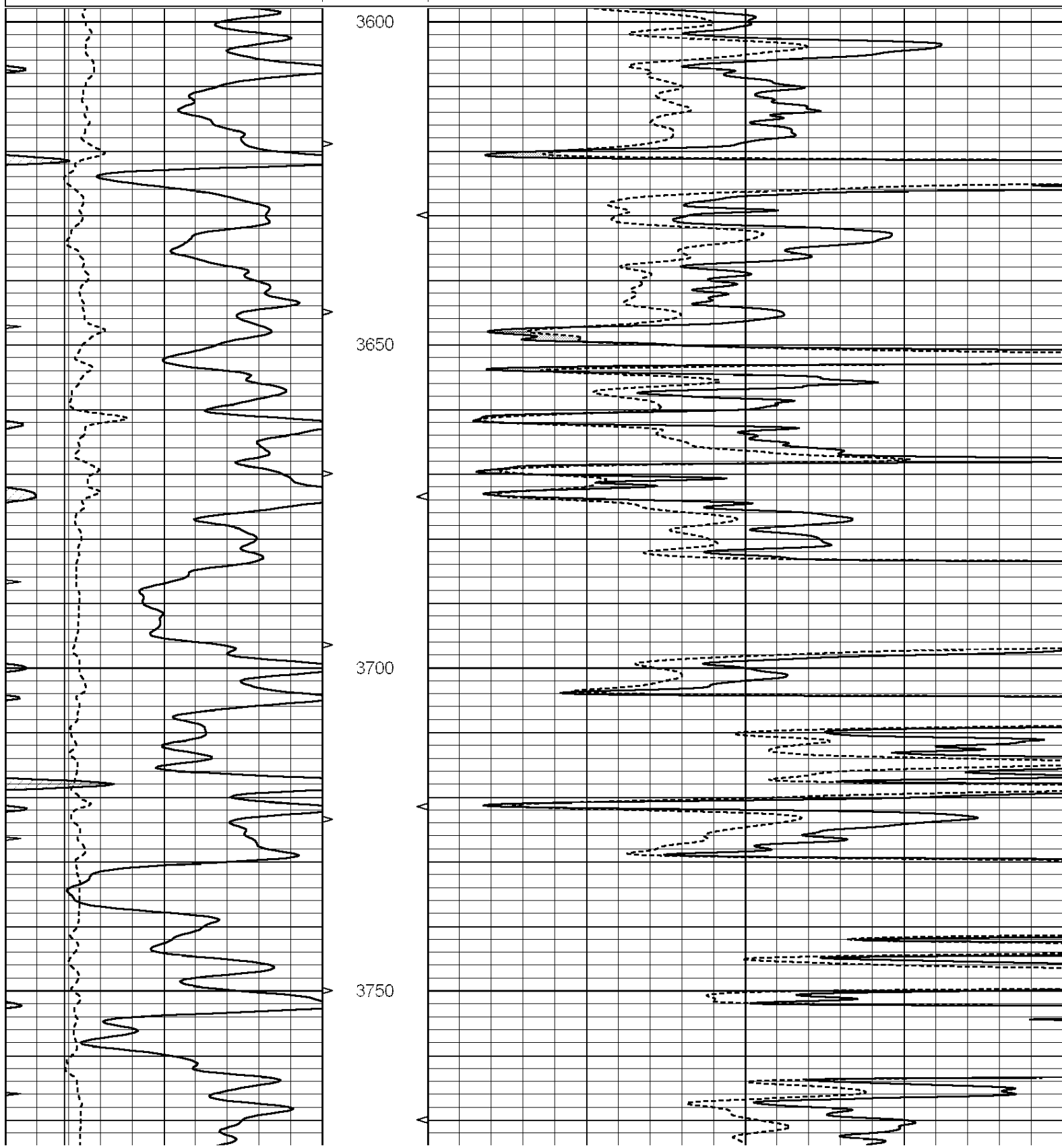


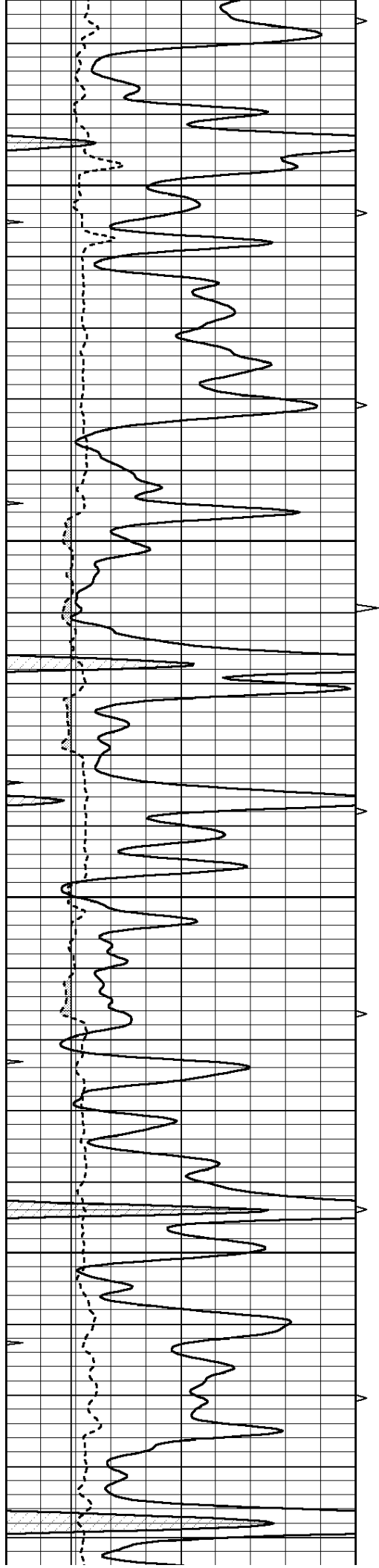
SUPERIOR
Hays,
Kansas

MAIN SECTION

Database File: 007982pe.db
 Dataset Pathname: pass7.4
 Presentation Format: micro
 Dataset Creation: Tue Nov 08 03:15:01 2011
 Charted by: Depth in Feet scaled 1:240

0	GAMMA RAY (GAPI)	150	ABHV	0	MEL1.5 (Ohm-m)	40
6	CALIPER (in)	16	10 (ft3)	0	MEL2.0 (Ohm-m)	40
0	MINMK	20	TBHV			
			0 (ft3)	10		



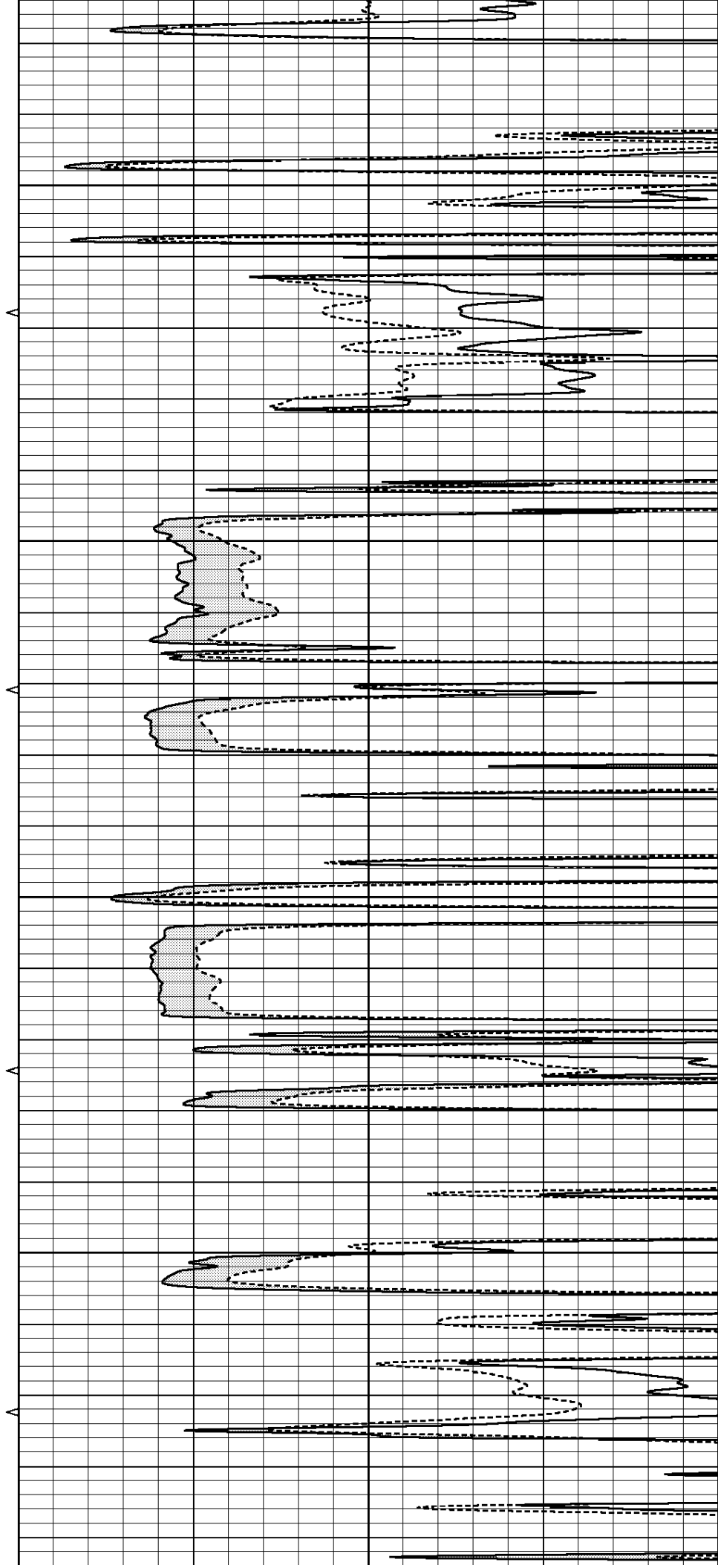


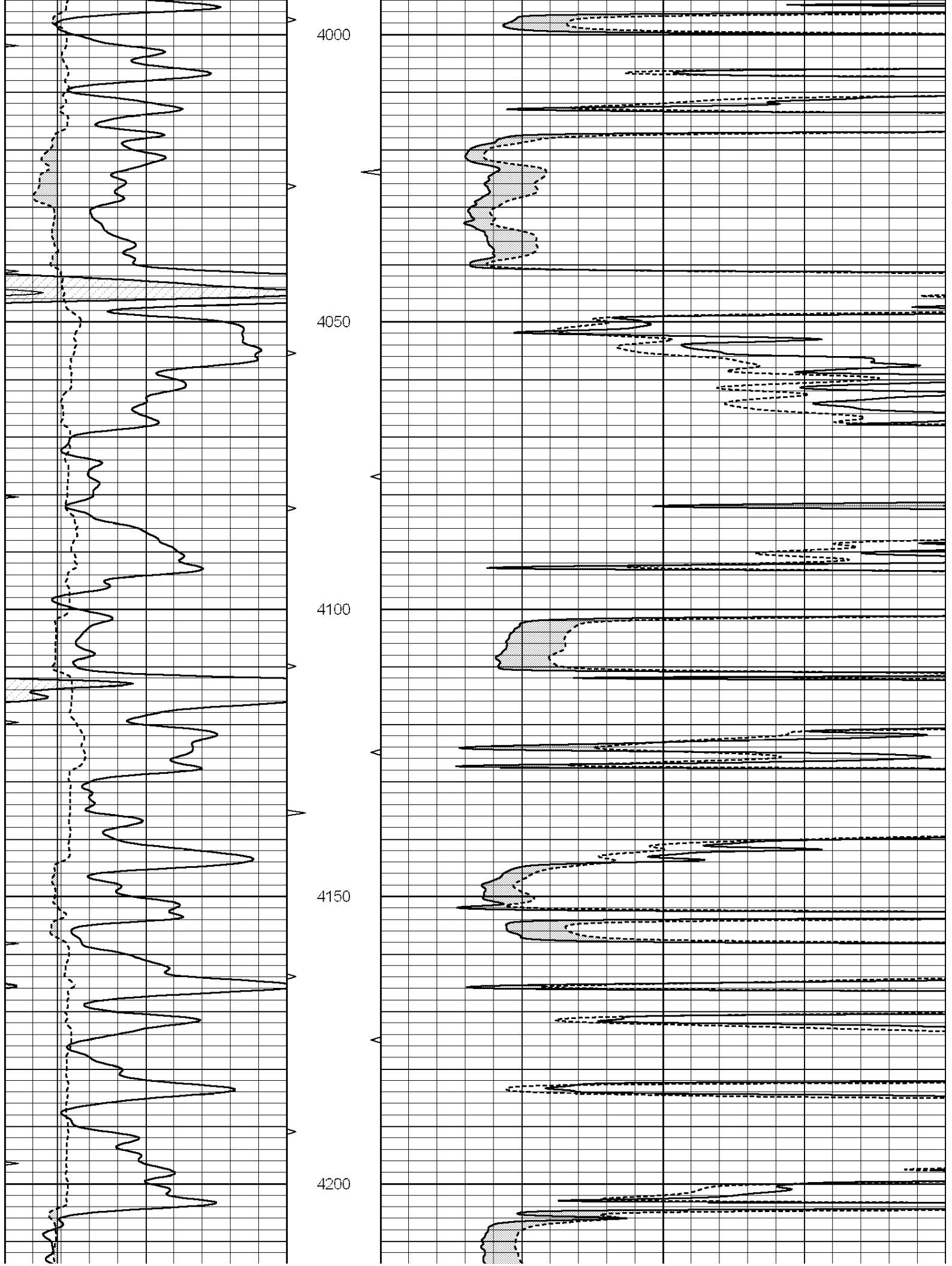
3800

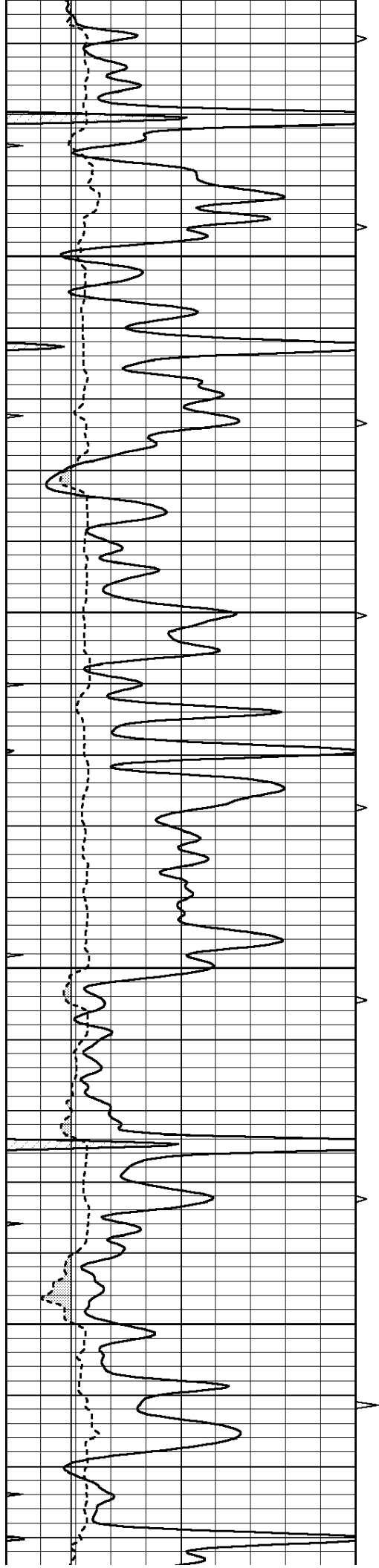
3850

3900

3950





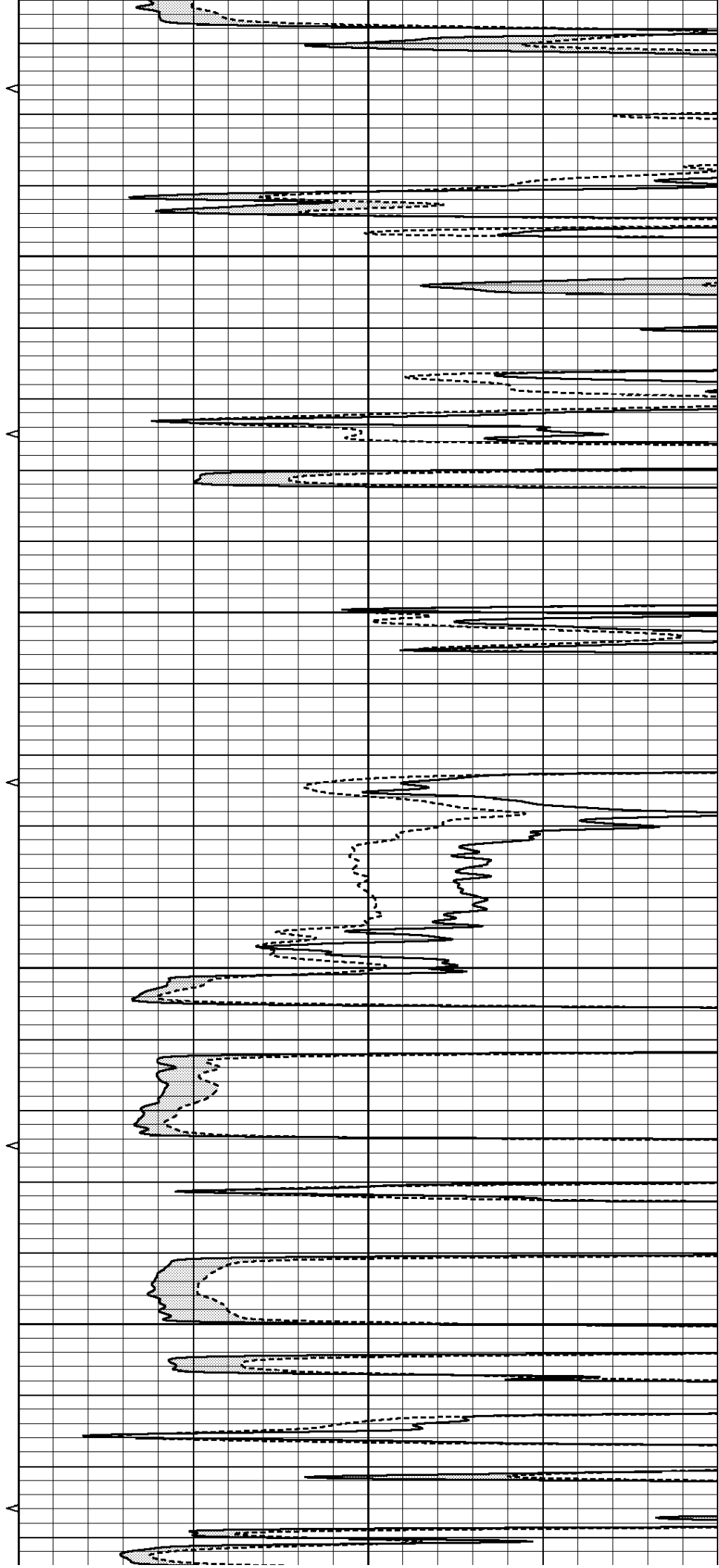


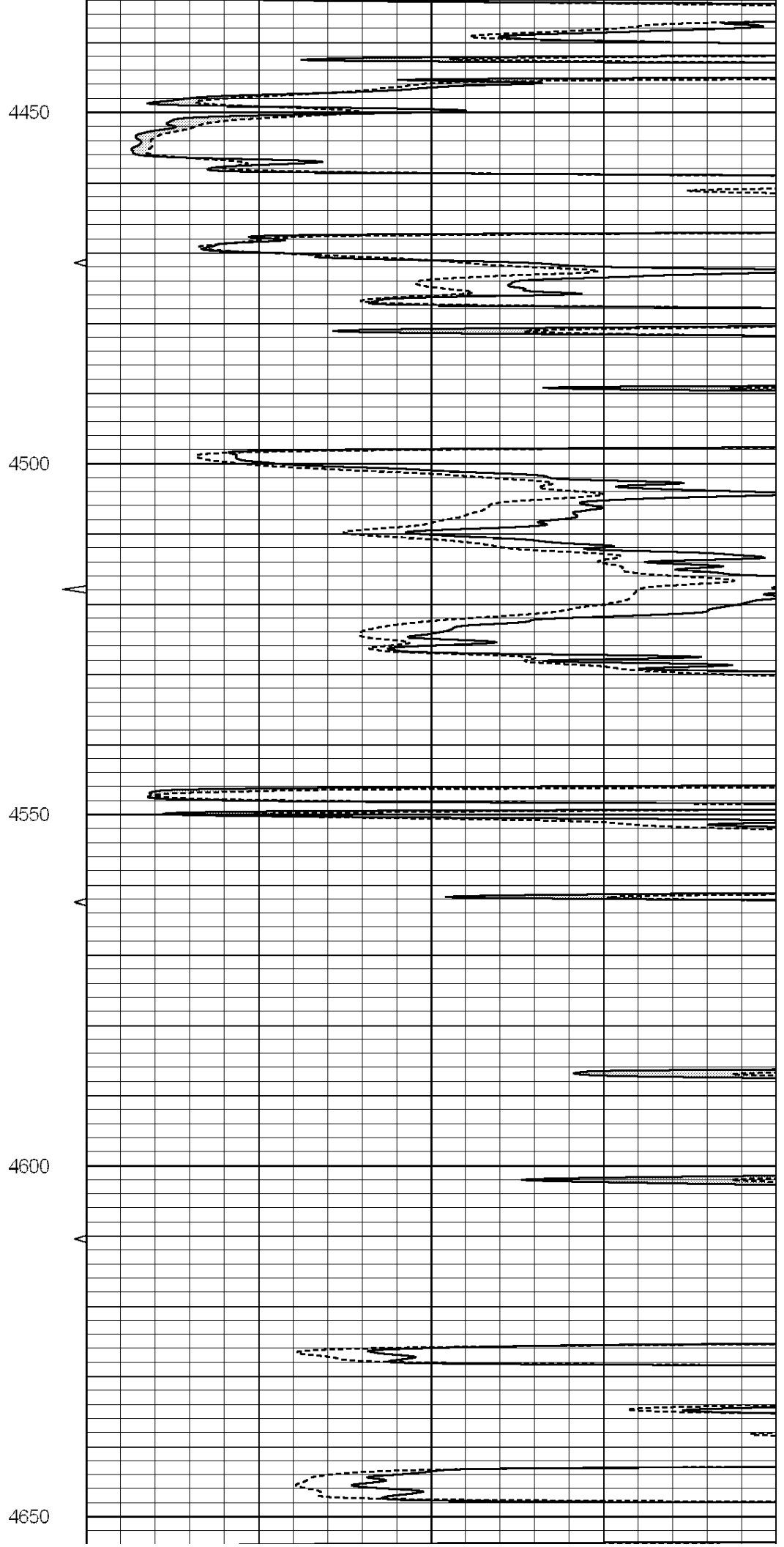
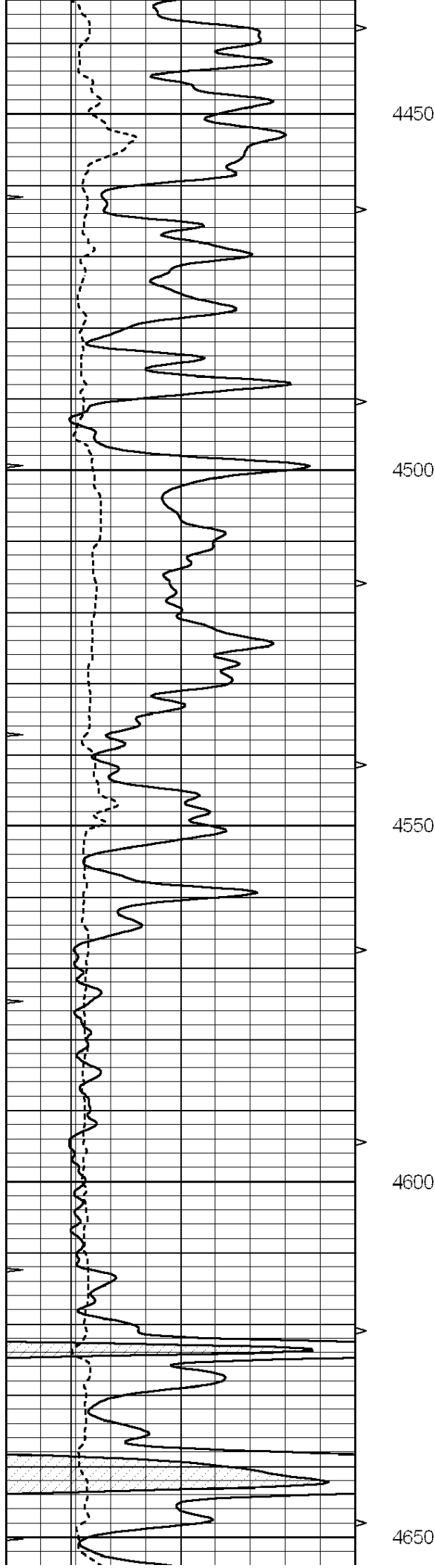
4250

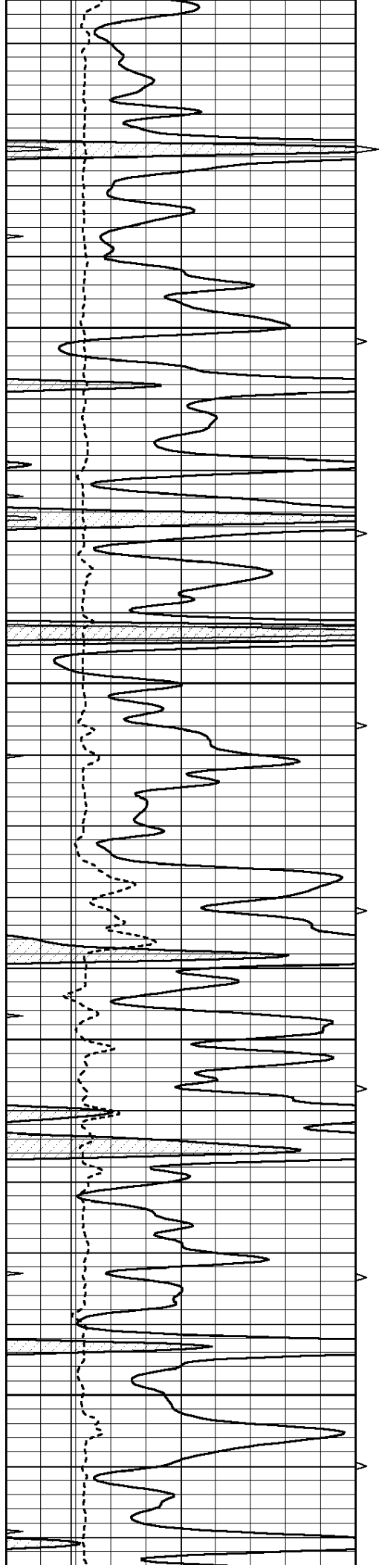
4300

4350

4400





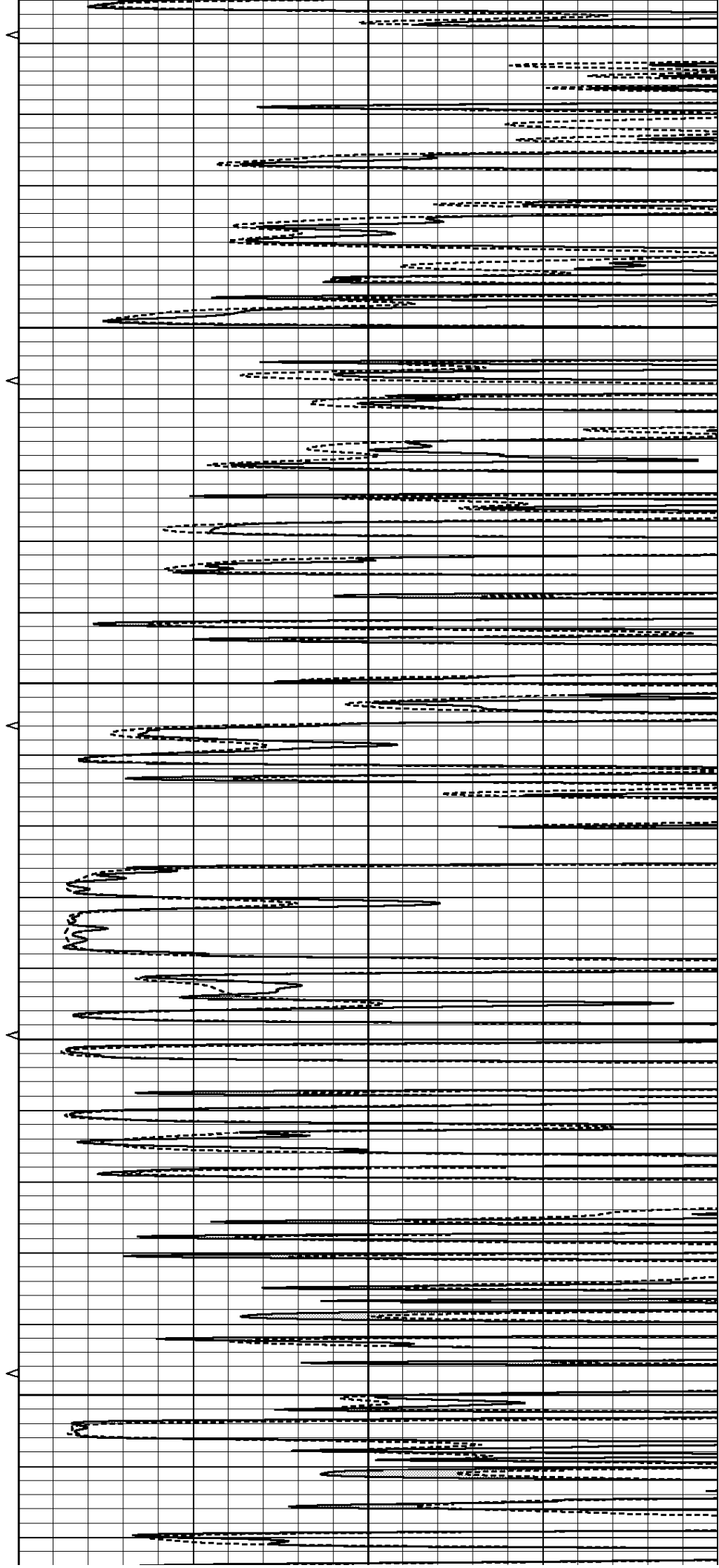


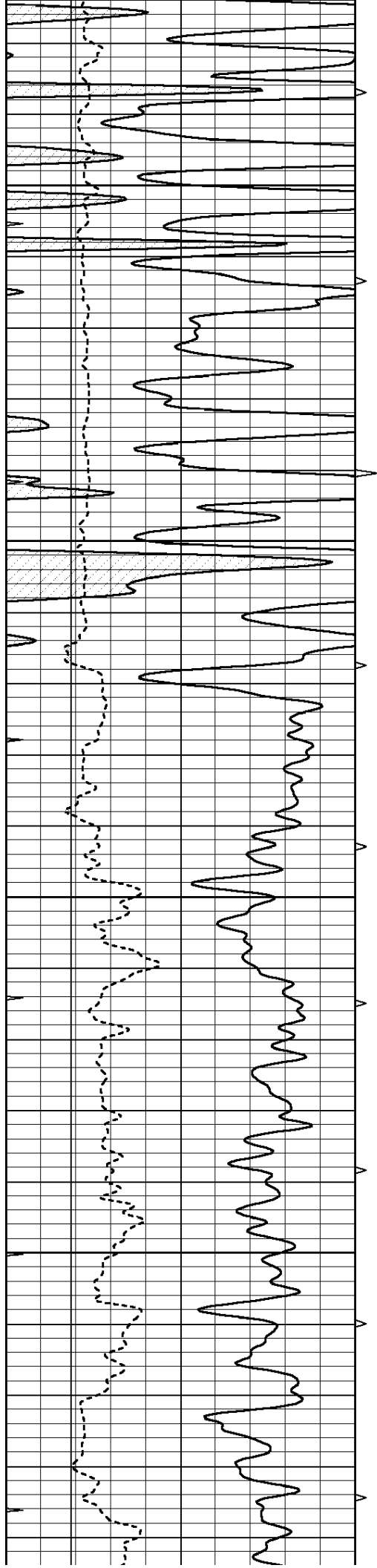
4700

4750

4800

4850



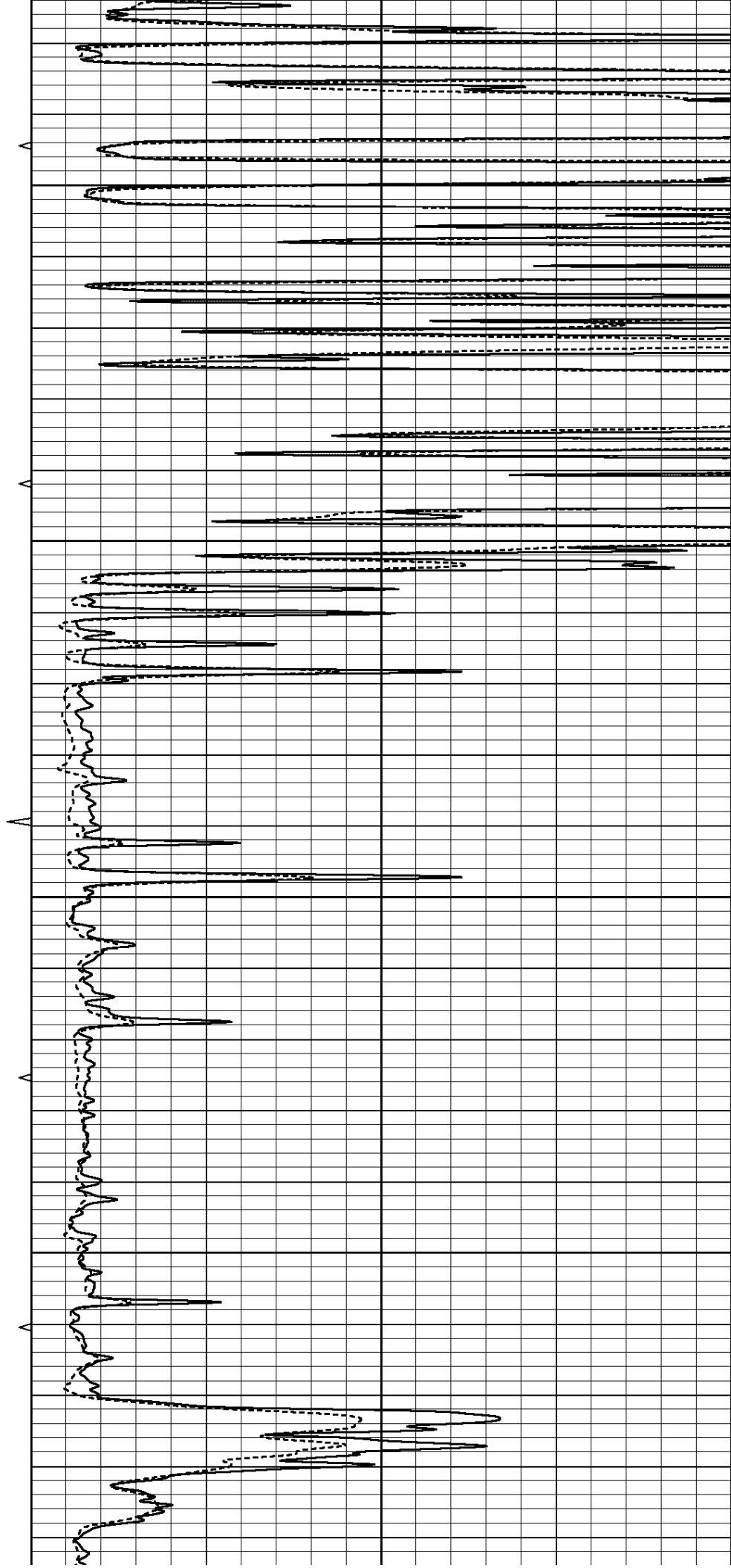


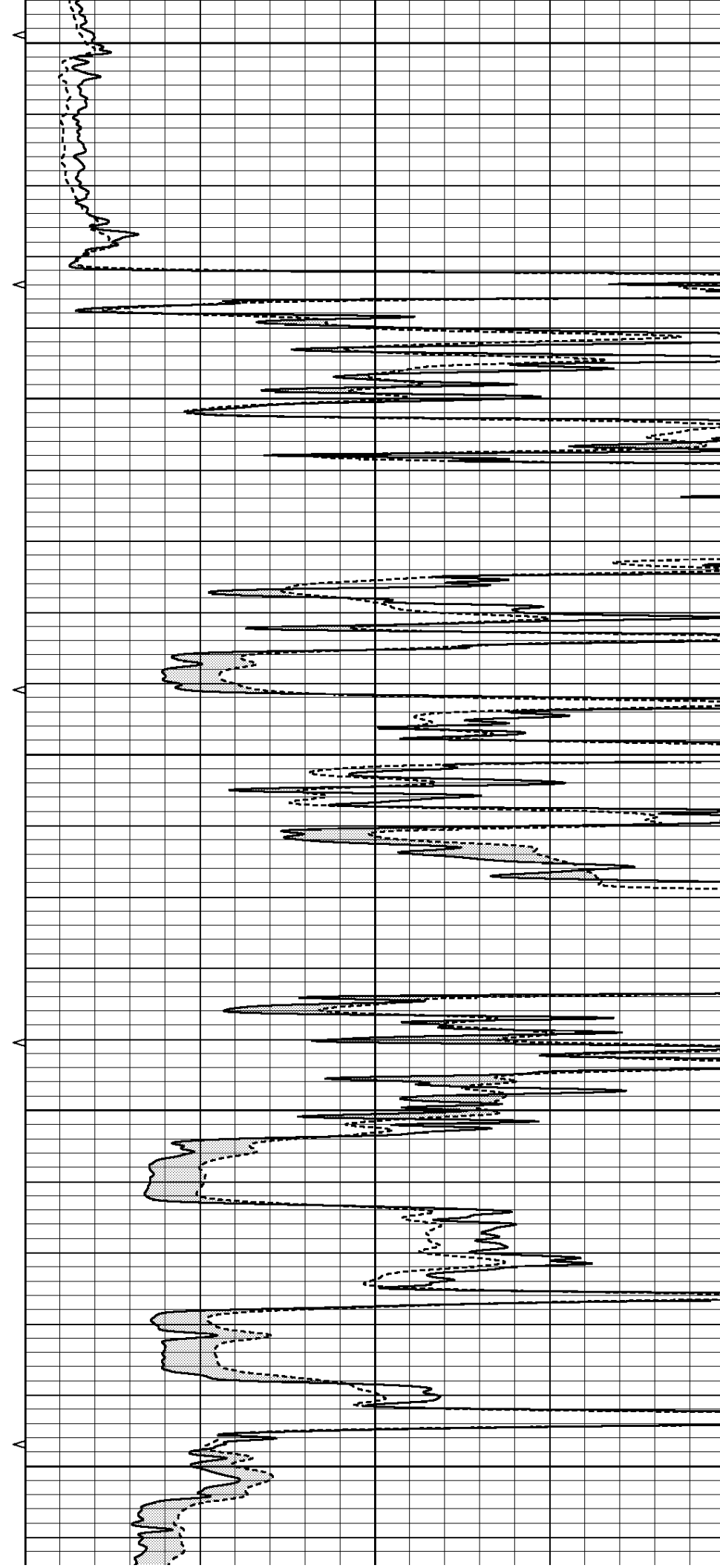
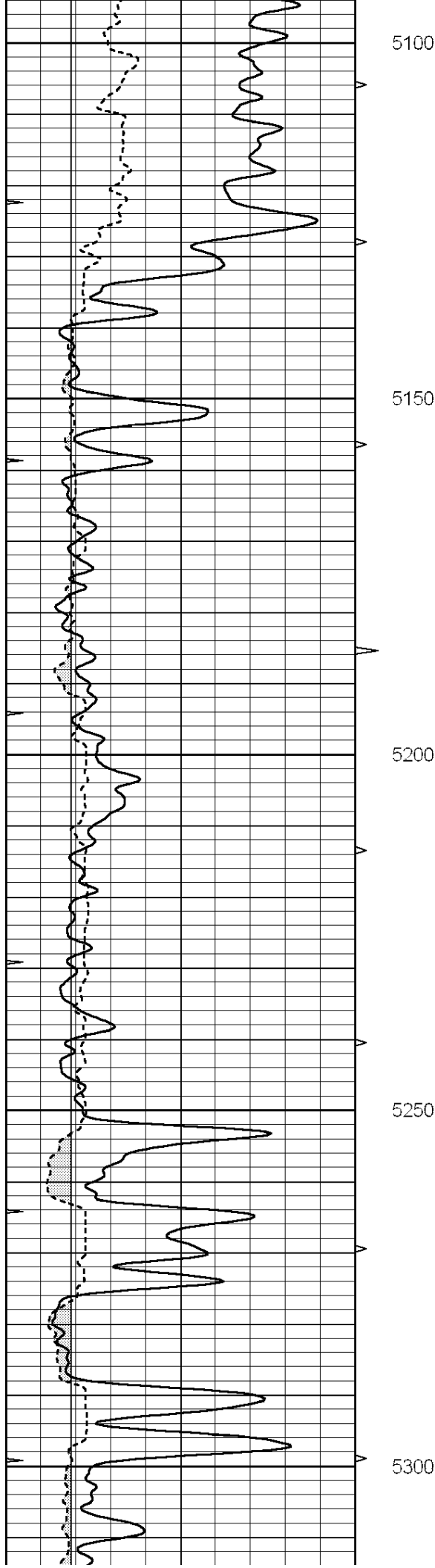
4900

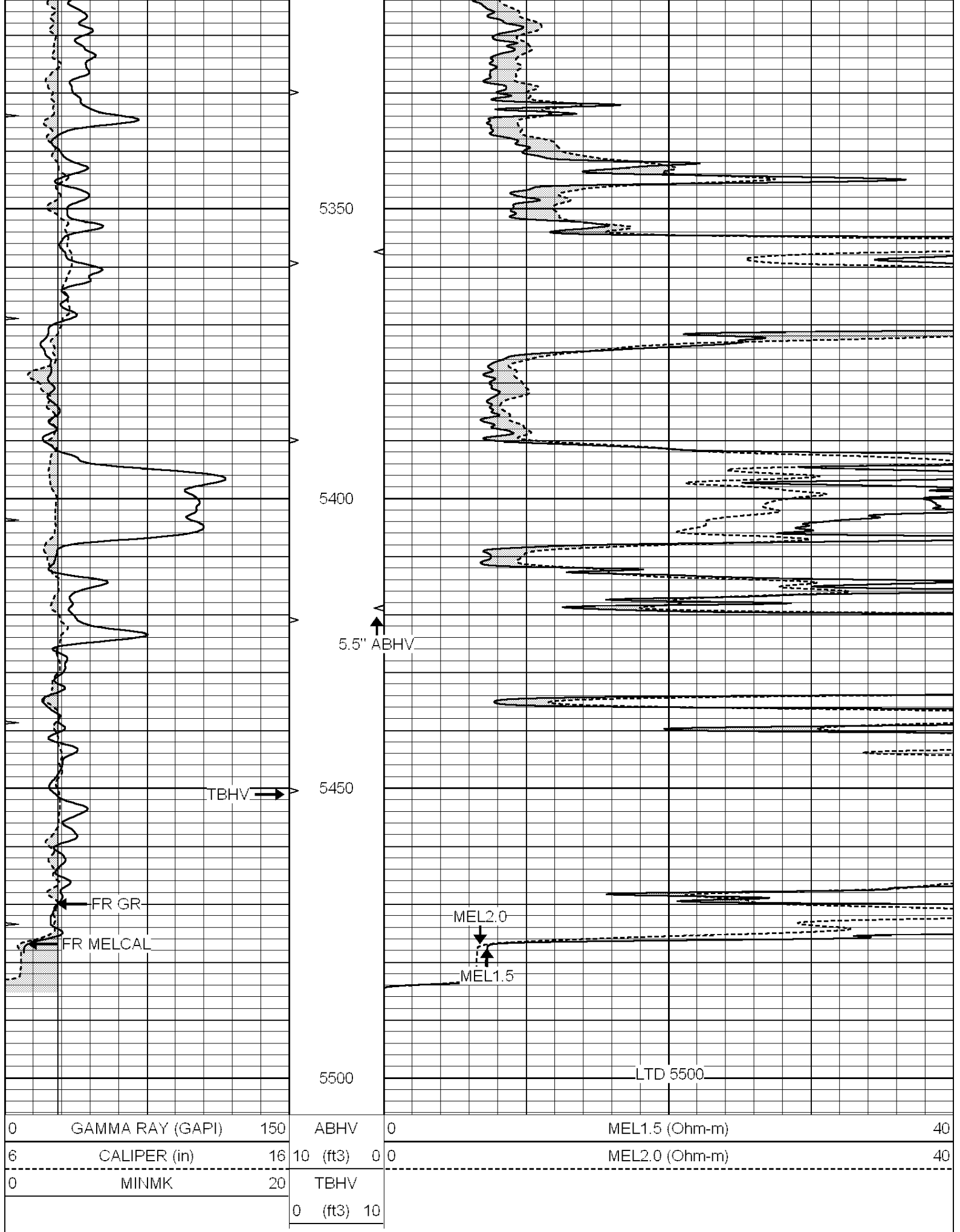
4950

5000

5050









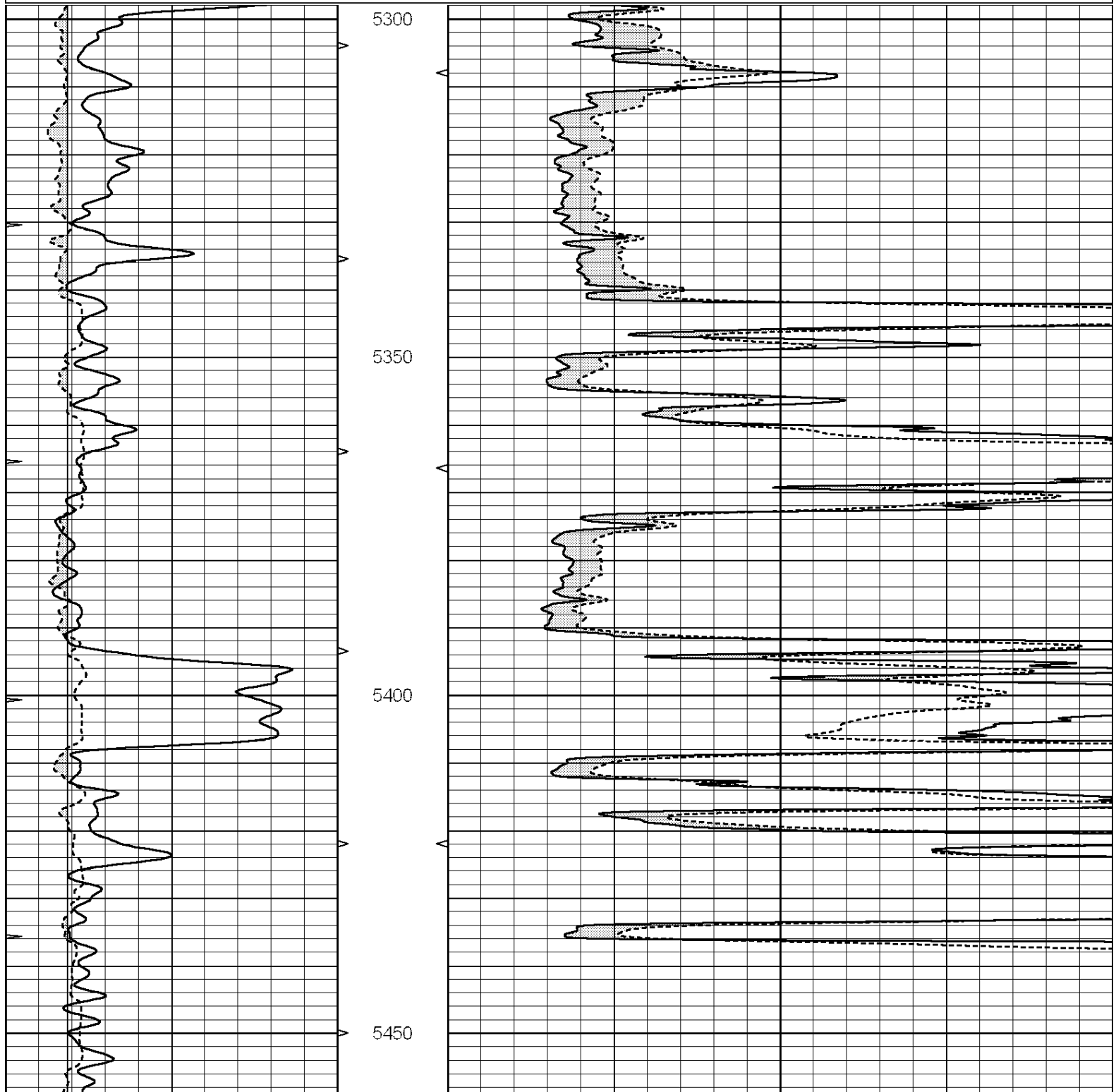
SUPERIOR

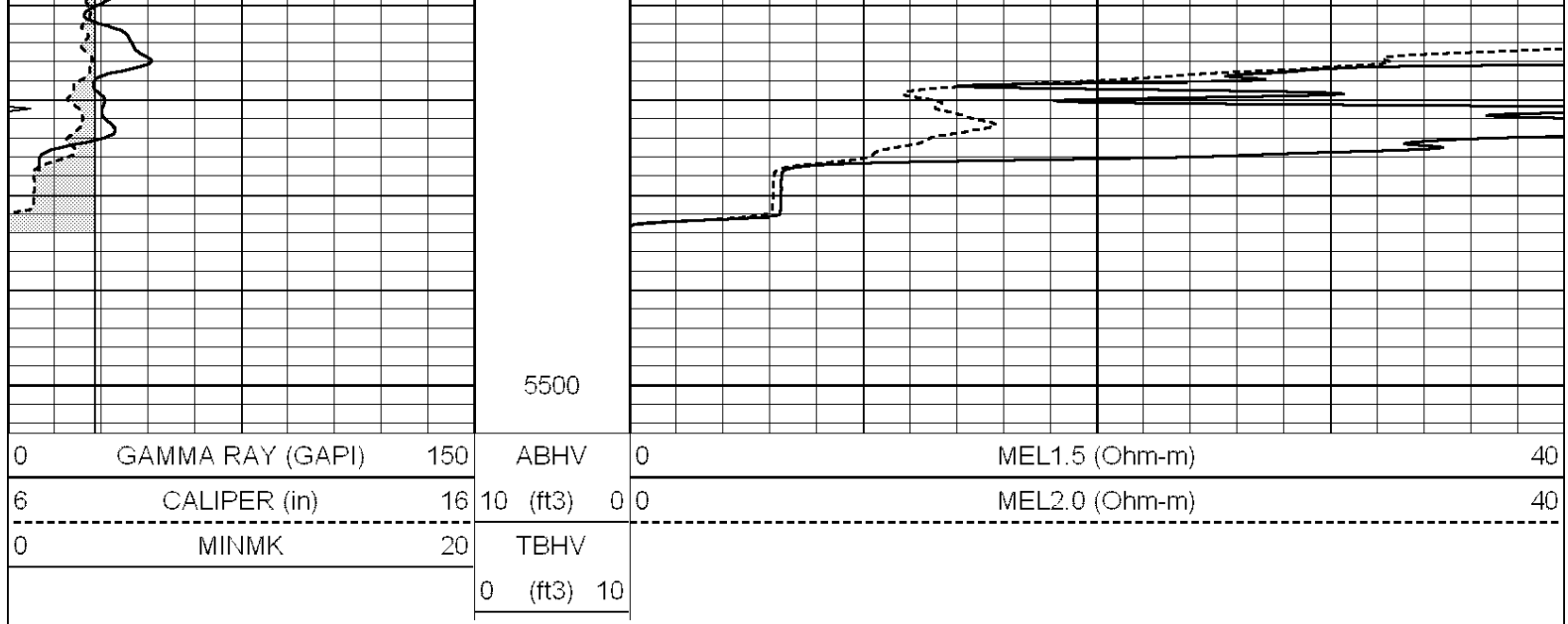
Hays,
Kansas

REPEAT SECTION

Database File: 007982pe.db
Dataset Pathname: pass6.4
Presentation Format: micro
Dataset Creation: Tue Nov 08 01:32:50 2011 by Calc Open-Cased 090629
Charted by: Depth in Feet scaled 1:240

0	GAMMA RAY (GAPI)	150	ABHV	0	MEL1.5 (Ohm-m)	40
6	CALIPER (in)	16	10 (ft3)	0 0	MEL2.0 (Ohm-m)	40
0	MINMK	20	TBHV			
			0 (ft3) 10			





Calibration Report			
Database File:	007982pe.db		
Dataset Pathname:	pass7.4		
Dataset Creation:	Tue Nov 08 03:15:01 2011		
MICRO Calibration Report			
Serial Number:	MICRO5		
Tool Model:	PROBE		
Performed:	Tue Nov 08 01:17:37 2011		
Caliper Calibration:	Gain=4.039	Offset=-4.699	
	Low Cal	High Cal	
References	7.400	16.000	
Readings	2.995	5.124	
1.5" Calibration:	Gain=40.000	Offset=0.000	
	Low Cal	High Cal	
References	0.000	20.000	
Readings	0.008	0.991	
2" Calibration:	Gain=55.000	Offset=-1.200	
	Low Cal	High Cal	
References	0.000	20.000	
Readings	0.014	0.905	
Gamma Ray Calibration Report			
Serial Number:	GR3		
Tool Model:	OPEN		
Performed:	Tue Nov 08 01:18:16 2011		
Calibrator Value:	200.0	GAPI	
Background Reading:	3.0	cps	
Calibrator Reading:	186.0	cps	
Sensitivity:	1.6000	GAPI/cps	