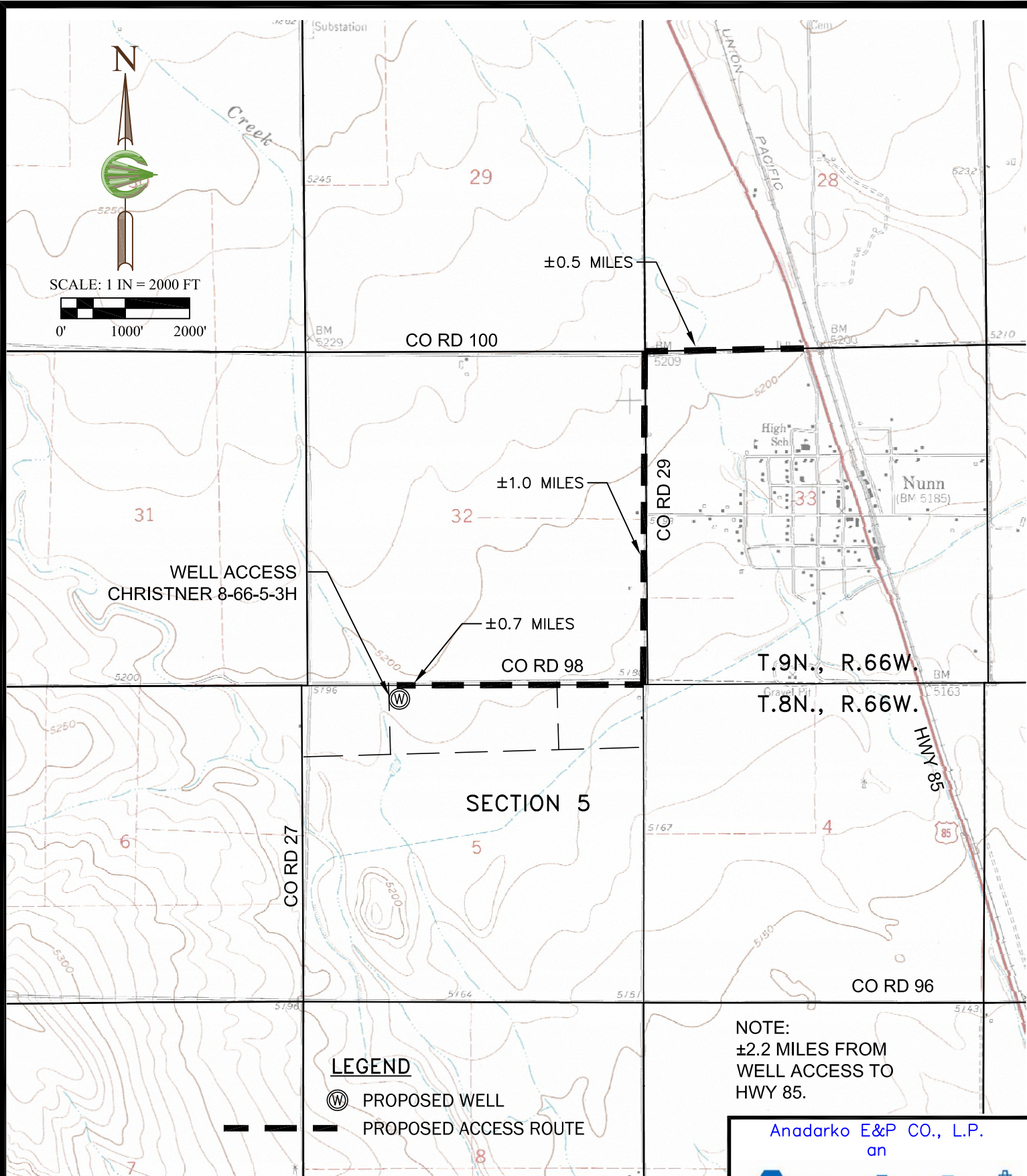
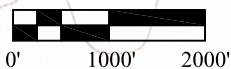




SCALE: 1 IN = 2000 FT



**COFFEY**

ENGINEERING & SURVEYING

902 S. 3rd St., Laramie, WY 82070  
[P] 307-742-7425 [F] 307-742-7403

**ACCESS MAP**

250' FNL & 1680' FWL (WELL)  
600' FSL & 1289' FWL (BOTTOM HOLE)  
WELL PAD: CHRISTNER 8-66-5-3H  
SEC. 5, T8N, R66W, 6TH P.M.  
WELD COUNTY, COLORADO

Anadarko E&P CO., L.P.  
an

**Anadarko**  
Petroleum Corporation

1099 18th Street  
Denver, CO 80202

Project: 1715.07  
Drafted By: RLB  
Date: 03/11/11

Sheet:  
3 / 5