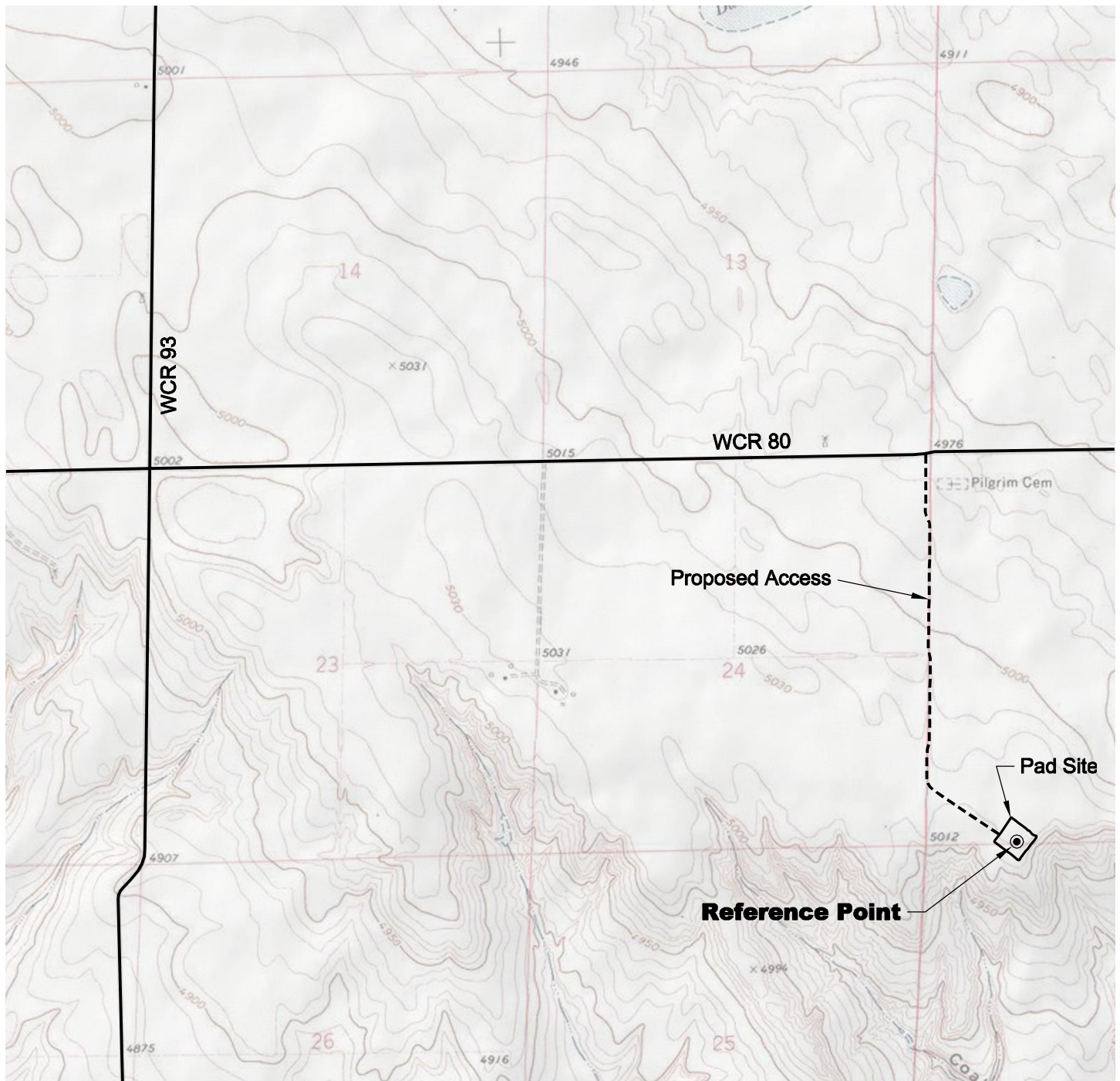


ACCESS ROAD MAP



DRIVING DIRECTIONS:

MP 0.0 - Intersection of Highway 14 & WCR 129 in Raymer;
 East on Highway 14
 MP 7.9 - Right of WCR 93
 MP 12.9 - Left on WCR 80
 MP 14.9 - Right on access to Slick Rock 19-14-7-60
 MP 16.0 - Slick Rock 19-14-7-60

11/10/11



North



Graphic Scale in Feet
 1 inch = 2000 feet



LAND SURVEYING AND MAPPING
 LAFAYETTE - WINTER PARK
 Ph 303 666 0379 Fx 303 665 6320

CARRIZO OIL & GAS, INC
SLICK ROCK 19-14-7-60 PAD

LOT 4 SECTION 19 T7N R60W
6th PM WELD COUNTY COLORADO