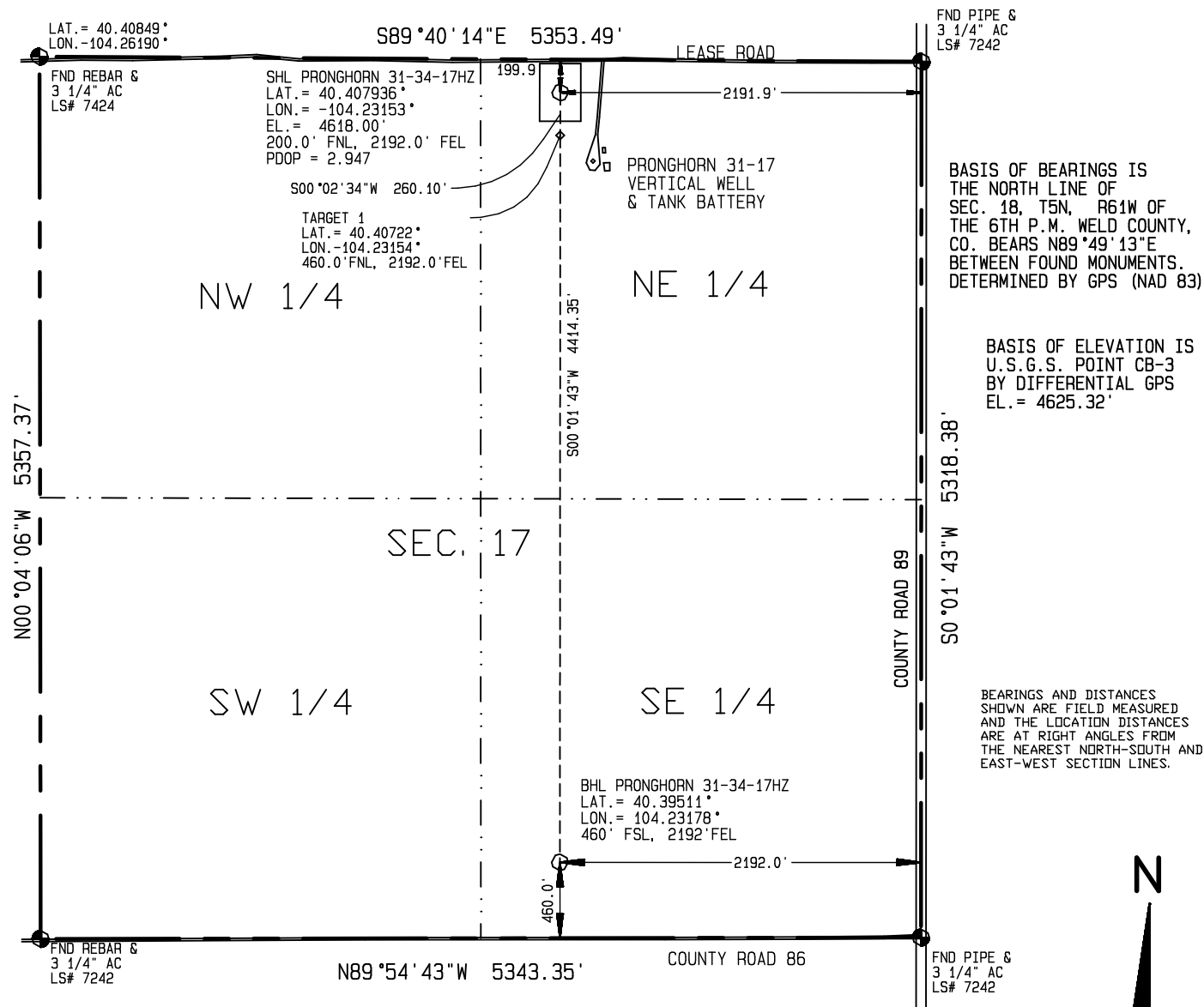
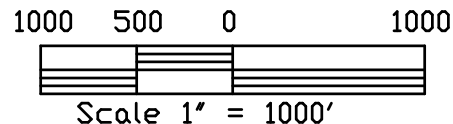


Visible improvements within 400 feet of the location include:
 A lease road passes 188' to the north.
 A lease road passes 235' to the east.



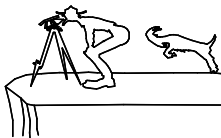
I HEREBY CERTIFY THAT THIS PLAT IS
 AN ACCURATE REPRESENTATION OF A
 CORRECT SURVEY SHOWING THE
 LOCATION OF SAID WELLSITE:



Dan Griggs PLS# 38018

CONTRACT SURVEYORS, LTD.
 COMPLETE SURVEYING AND GLOBAL POSITIONING

2133 SOUTH BELLAIRE STREET #14
 DENVER COLORADO 80222
 (303) 756-3695



DATE OF FIELD WORK:

NOVEMBER 1, 2011

DATE OF DRAWING:

NOVEMBER 3, 2011

PRONGHORN 31-34-17HZ (HORIZONTAL WELL)

NW NE SEC. 17, T5N, R61W

BONANZA CREEK ENERGY OPERATING COMPANY, LLC

CSL# 11104-57

WELD COUNTY, COLORADO