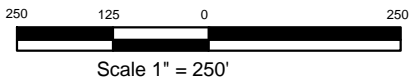


— — — — A lease road passes 185' North of stake location.



BONANZA CREEK ENERGY OPERATING COMPANY, LLC



Drawing Title:

Location Drawing

Drawing Date: 11/09/2011

Well/Location Name:

Pronghorn 41-44-18HZ

Surface Location:

NENE Sec 18, T5N, R61W, 6th PM, Weld County, CO
Lat. 40.40800 Long. -104.24454
200' FNL 460' FEL

Drawn By: ksc