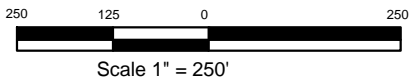


— — — — A lease road passes 188' North of stake location.

— — — — A lease road passes 235' east of stake location.



**BONANZA CREEK ENERGY OPERATING COMPANY, LLC**



Drawing Title:

**Location Drawing**

Drawing Date: 11/09/2011

Well/Location Name:

**Pronghorn 31-34-17HZ**

Surface Location:

NWNE Sec 17, T5N, R61W, 6th PM, Weld County, CO  
 Lat. 40.407936 Long. -104.23153  
 200' FNL 2192' FEL

Drawn By: ksc