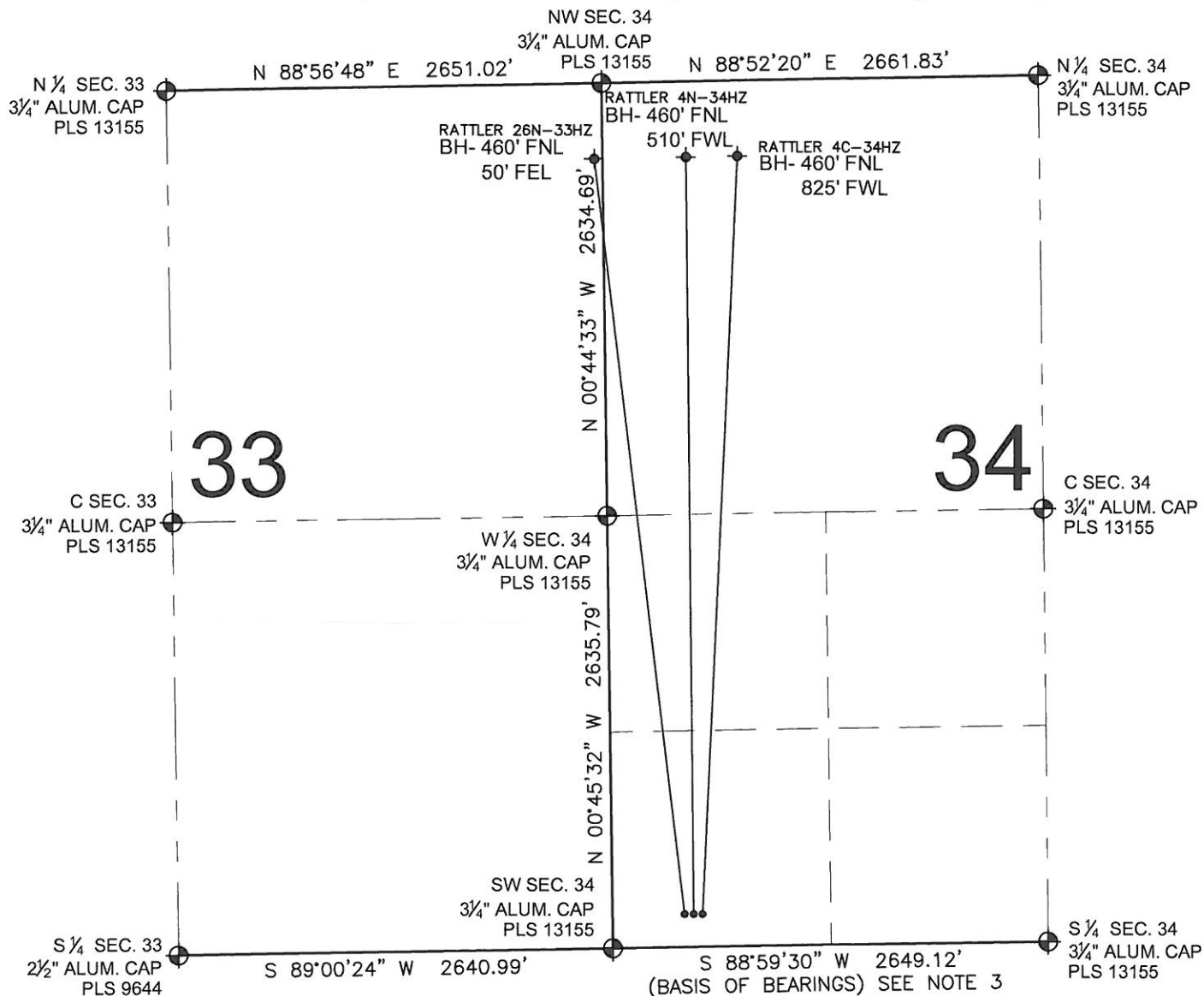


# PAD DRAWING: RATTLER 3 PAD

SECTION 34, TOWNSHIP 3 NORTH, RANGE 66 WEST, 6TH P.M.



## LEGEND

- ⊕ = EXISTING MONUMENT
- ⊙ = PROPOSED WELL
- ⬮ = BOTTOM HOLE
- ⬮ = EXISTING WELL
- BH= BOTTOM HOLE

## NOTES:

- RATTLER 26N-33HZ TO BE AT 200' FSL, 463' FWL.  
BOTTOM HOLE AT 460' FNL & 50' FEL.
- RATTLER 4N-34HZ TO BE AT 200' FSL, 493' FWL.  
BOTTOM HOLE AT 460' FNL & 510' FWL.
- RATTLER 4C-34HZ TO BE AT 200' FSL, 523' FWL.  
BOTTOM HOLE AT 460' FNL & 825' FWL.

## NOTES:

1. THIS FIELD SURVEY CONFORMS TO THE MINIMUM STANDARDS SET BY THE C.O.G.C.C., RULE NO. 215
2. HORIZONTAL POSITIONS AND ORTHOMETRIC ELEVATIONS SHOWN AT THE WELL HEAD, ARE BASED ON GPS-RTK POSITIONS DERIVED FROM MINIMUM 2-HOUR STATIC OBSERVATIONS CORRECTED BY THE NATIONAL GEODETIC SURVEY ONLINE POSITIONING USER SERVICE, O.P.U.S. DATUM: HORIZONTAL = NAD83/2007, VERTICAL = NAVD88
3. THE BASIS OF BEARINGS ARE STATE PLANE COORDINATE SYSTEM GRID BEARINGS SHOWN HEREON BETWEEN THE DESCRIBED THE MONUMENTS SHOWN HEREON.
4. GRID DISTANCES ARE SHOWN, AS MEASURED IN THE FIELD, WITH TIES TO WELLS MEASURED PERPENDICULAR TO SECTION LINES.

PREPARED BY:

**PFS**

Petroleum Field Services, LLC  
1801 W. 13th Ave.  
Denver, CO 80204

KERR-MCGEE OIL & GAS ONSHORE LP

FIELD DATE:  
09-28-11

DRAWING DATE:  
09-29-11

BY:  
SMF

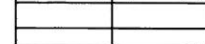
PAD NAME:  
RATTLER 3 PAD

SURFACE LOCATION:

WELD COUNTY, COLORADO  
SW 1/4 SW 1/4, SEC. 34, T3N, R66W, 6TH P.M.



0 500 1000



SCALE: 1"=1000'