

LEGEND:

● PROPOSED LOCATION

WEXPRO COMPANY

CARL ALLEN #44, #50, #51, #52, #53 & #54
SECTION 32, T12N, R97W, 6th P.M.
SW 1/4



Uintah Engineering & Land Surveying
 85 South 200 East Vernal, Utah 84078
 (435) 789-1017 * FAX (435) 789-1813



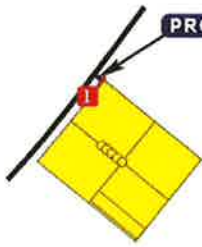
ACCESS ROAD
MAP

05 25 11
 MONTH DAY YEAR

A
 TOPO

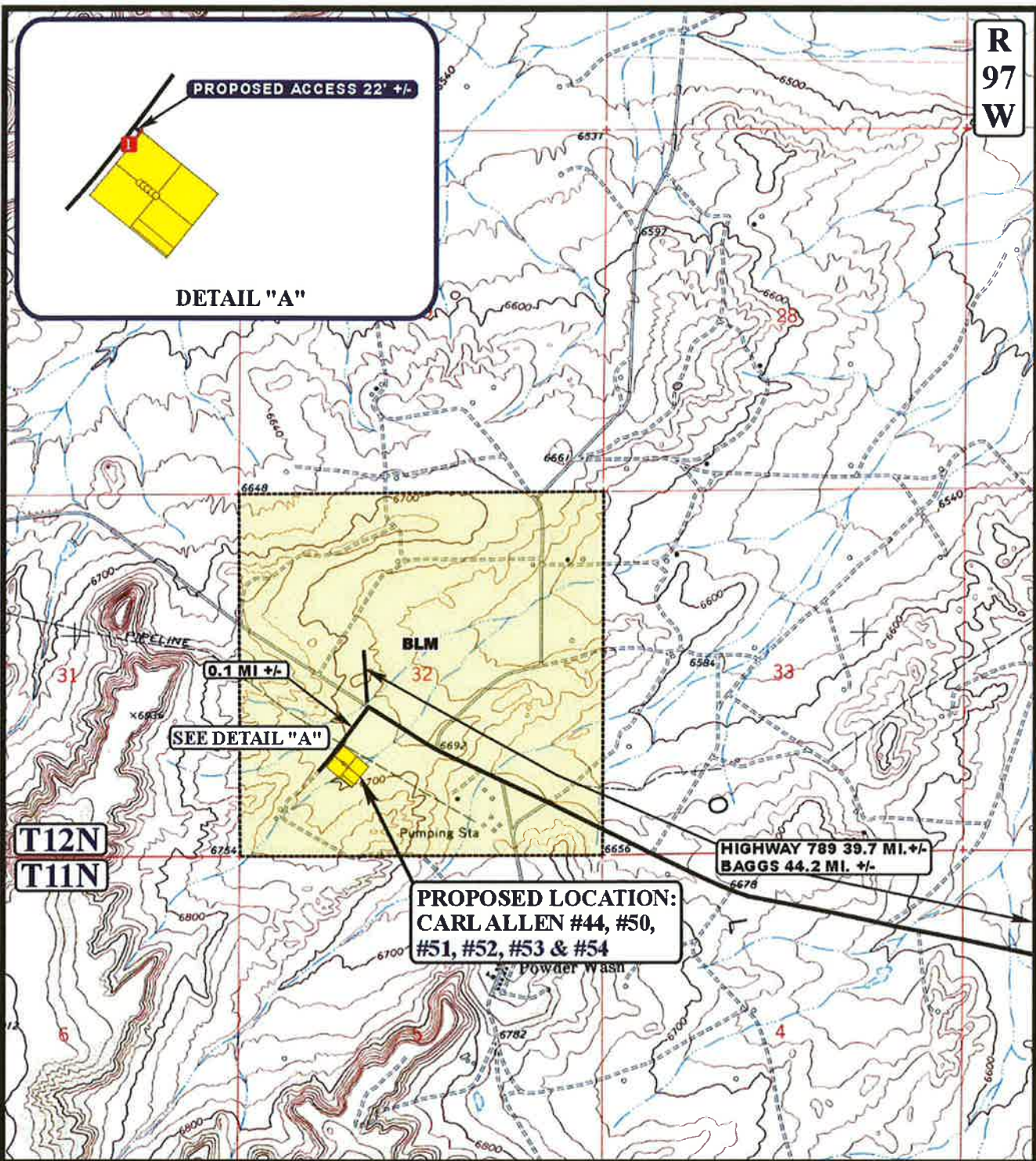
SCALE: 1:100,000 DRAWN BY: J.J. REVISED: 00-00-00

R
97
W



PROPOSED ACCESS 22' +/-

DETAIL "A"



LEGEND:

- EXISTING ROAD
- - - PROPOSED ACCESS ROAD
- 18" CMP REQUIRED



WEXPRO COMPANY

CARL ALLEN #44, #50, #51, #52, #53 & #54
SECTION 32, T12N, R97W, 6th P.M.
SW 1/4



Uintah Engineering & Land Surveying
85 South 200 East Vernal, Utah 84078
(435) 789-1017 • FAX (435) 789-1813

TOPOGRAPHIC MAP
08 20 10
MONTH DAY YEAR
SCALE: 1" = 2000' DRAWN BY: J.J. REVISED: 05-25-11



