

T12N, R97W, 6th P.M.

WEXPRO COMPANY

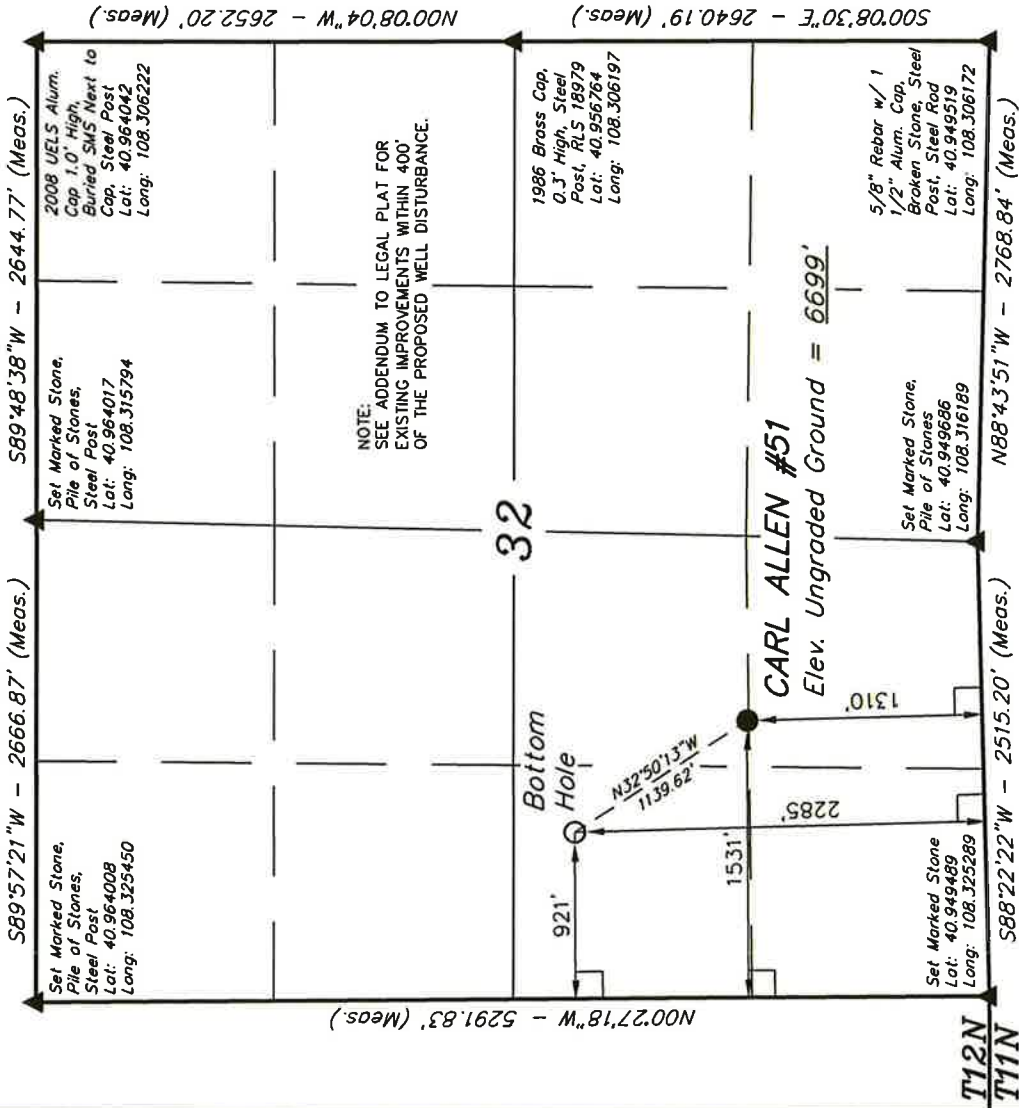
Well location, CARL ALLEN #51, located as shown in the NE 1/4 SW 1/4 of Section 32, T12N, R97W, 6th P.M., Moffat County, Colorado.

BASIS OF ELEVATION

SPOT ELEVATION LOCATED AT THE SOUTHEAST CORNER OF SECTION 4, T11N, R97W, 6th P.M. TAKEN FROM THE POWDER WASH QUADRANGLE, COLORADO, MOFFAT COUNTY, 7.5 MINUTE SERIES (TOPOGRAPHICAL MAP) PUBLISHED BY THE UNITED STATES DEPARTMENT OF THE INTERIOR, GEOLOGICAL SURVEY. SAID ELEVATION IS MARKED AS BEING 6644 FEET.

BASIS OF BEARINGS

BASIS OF BEARINGS IS A G.P.S. OBSERVATION.



UNTAEH ENGINEERING & LAND SURVEYING

85 SOUTH 200 EAST - VERNAL, UTAH 84078

(435) 789-1017

PDOP = 1.4

SCALE 1" = 1000'

DATE SURVEYED: 05-12-11

DATE DRAWN: 05-23-11

PARTY B.B. C.I. S.L.

REFERENCES G.L.O. PLAT

FILE

WEATHER WARM

WEXPRO COMPANY

LEGEND:

— = 90° SYMBOL

● = PROPOSED WELL HEAD.

▲ = SECTION CORNERS LOCATED.