

Project: Weld County Colorado (NAD 83)

Site: Sec.30, T7N,R63W

Well: Grigsby PC AC30-73HN

Wellbore: Plan A - Rev 0 (PERMITTING PLAN ONLY)

Design: Plan A - Rev 0 Proposal

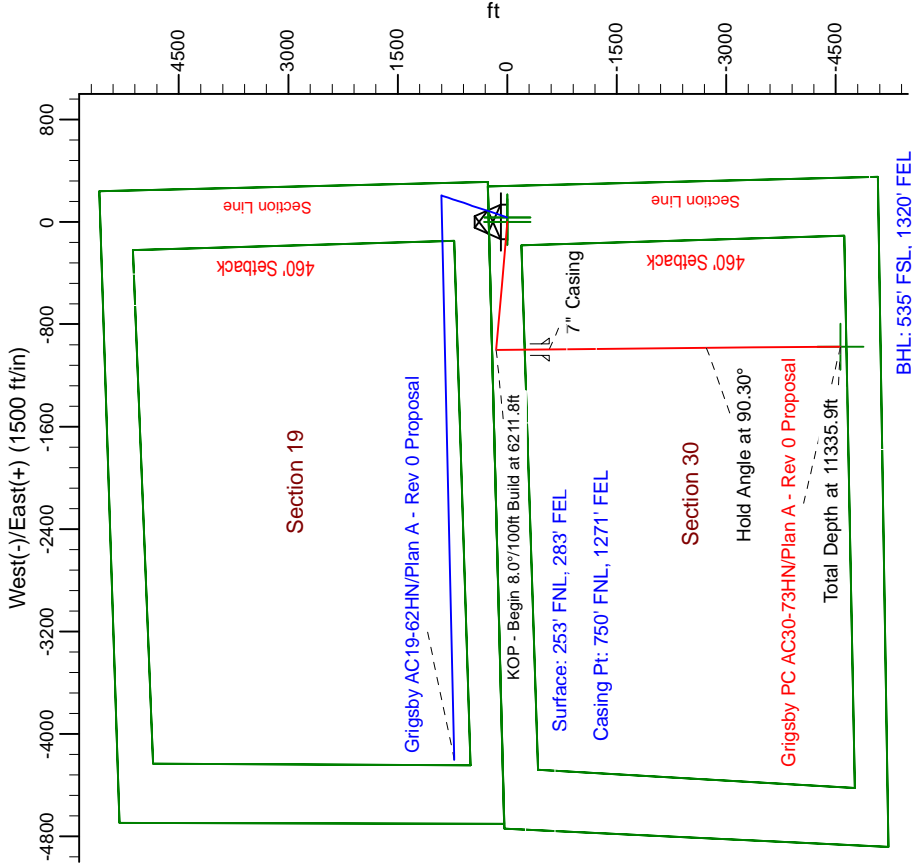
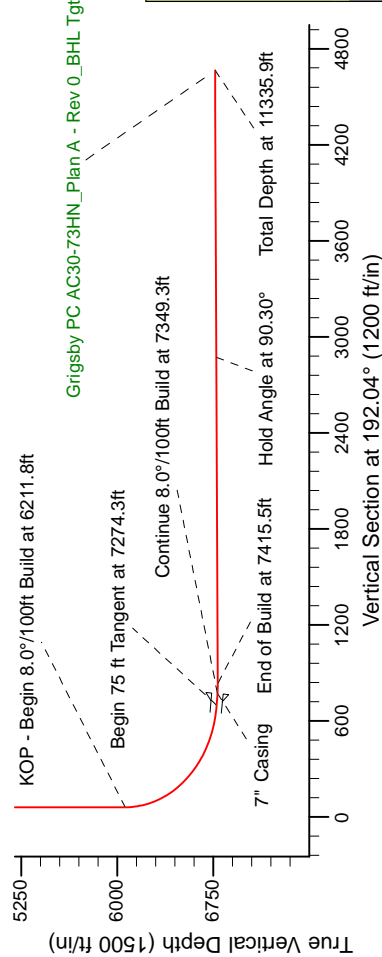
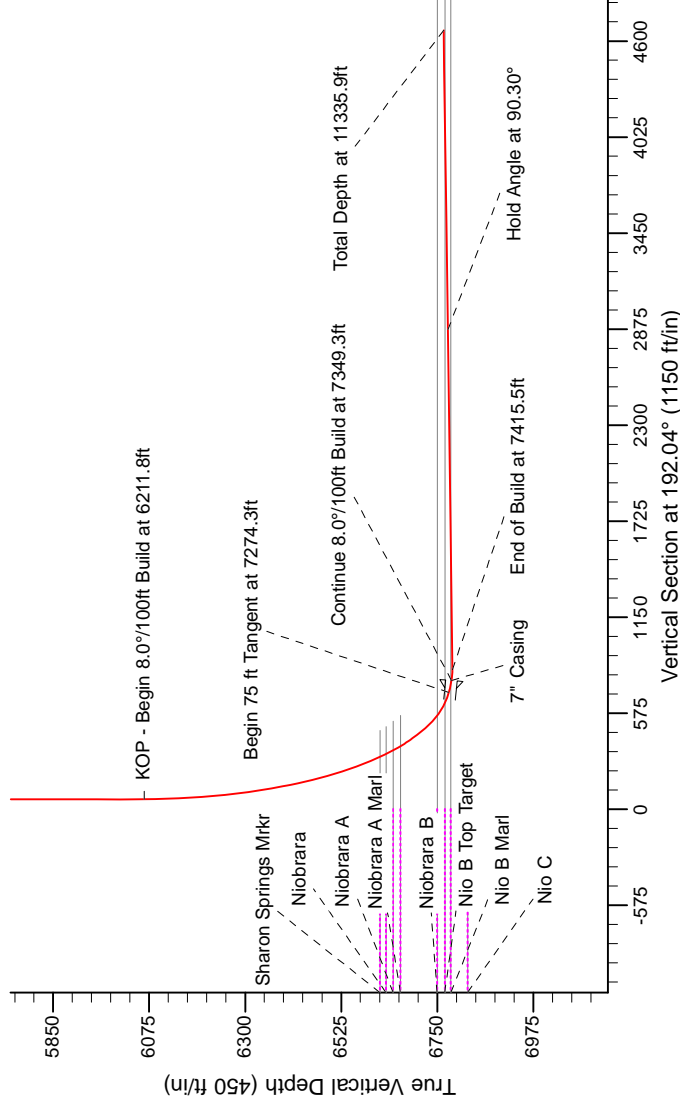
# Noble Energy

HALLIBURTON

Consulting

## SECTION DETAILS

Sec	MD	Inc	Azi	TVD	+N/-S	+E/-W	Dleg	TFace	VSEct	Target
1	0.0	0.00	0.00	0.0	0.0	0.0	0.00	0.00	0.0	
2	1200.0	0.00	0.00	1200.0	0.0	0.0	0.00	0.00	0.0	
3	1920.0	18.00	278.70	1908.2	17.0	-110.9	2.50	278.70	6.5	
4	4467.7	18.00	278.70	4331.3	136.0	-889.1	0.00	0.00	52.4	
5	5187.7	0.00	0.00	5039.5	153.0	-1000.0	2.50	180.00	58.9	
6	5648.3	0.00	0.00	5500.0	153.0	-1000.0	0.00	0.00	58.9	
7	6211.8	0.00	0.00	6063.5	153.0	-1000.0	0.00	0.00	58.9	
8	7274.3	85.00	179.67	6777.0	-500.8	-996.2	8.00	179.67	697.5	
9	7349.3	85.00	179.67	6783.5	-575.5	-995.8	0.00	0.00	770.5	
10	7415.5	90.30	179.67	6786.2	-641.6	-995.4	8.00	0.00	835.1	
11	111335.9	90.30	179.67	6765.6	-4561.9	-972.8	0.00	-27.01	4664.5	Grigsby PC AC30-73HN_Plan A - Rev 0_BHL Tgt



WELL DETAILS: Grigsby PC AC30-73HN (NAD83 Geodetic System)

Ground Level: 4756.0  
Northing Easting Latitude Longitude  
440557.44 1001521.93 40° 33' 5.256 N 104° 28' 17.076 W

Plan: Plan A - Rev 0 Proposal (Grigsby PC AC30-73HN/Plan A - Rev 0 (PERMITTING PLAN ONLY))

Created By: Erika Cuauero Garcia Date: 9:29, October 27 2011

Magnetic Model IGRF200510  
Date: 10/24/2011

Azimuth to Grid North  
Dip Angle: 67.22°  
Magnetic North: 7.36°  
Field Strength: 53226.4

Grid North is 0.06° East of True North (Grid Convergence)  
Magnetic North is 0.07° East of True North (Magnetic Declination)  
To convert a True Direction to a Grid Direction, Subtract 0.06°  
To convert a Magnetic Direction to a Grid Direction, Add 0.07° East