

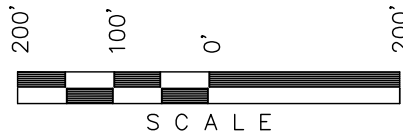
GUNNISON ENERGY CORPORATION

LOCATION DRAWING FOR

DEADMAN GULCH UNIT SECTION 18 PAD

SECTION 18, T12S, R89W, 6th P.M.

N 1/2

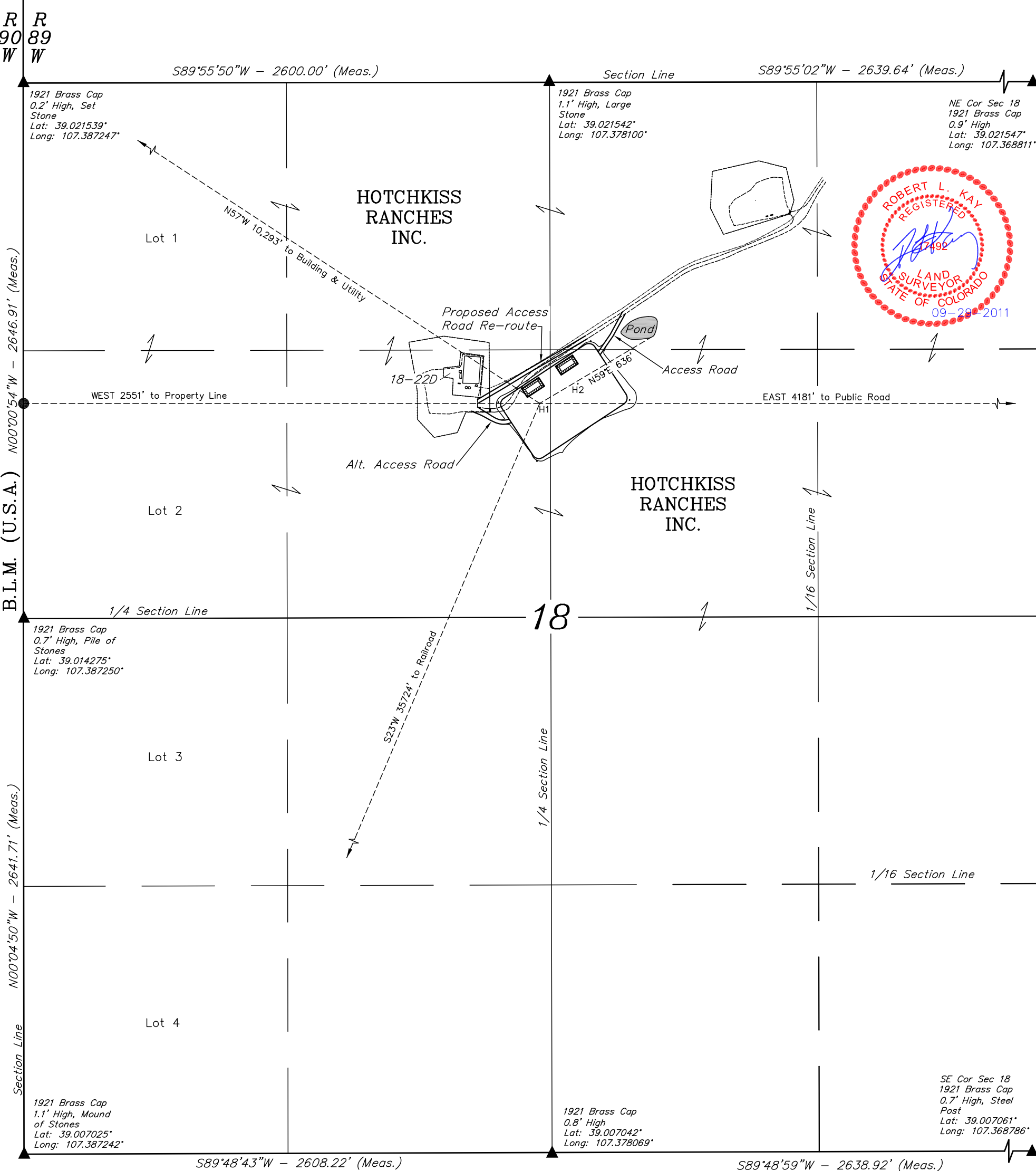


SCALE

FIGURE #6

SCALE: 1" = 200'
DATE: 09-09-11
DRAWN BY: D.R.B.
Rev: 10-06-11 D.R.B.

R 90 W
R 89 W



B.L.M. (U.S.A.) N00°00'54"W - 2646.91' (Meas.)

N00°04'50"W - 2641.71' (Meas.)

Section Line

1/4 Section Line

18

1/16 Section Line

1/16 Section Line

FUTURE LAND USE

CROP LAND: ☐ IRRIGATED ☐ DRY LAND ☐ IMPROVED PASTURE ☐ HAY MEADOW ☐ CRP
NON-CROP LAND: ☒ RANGELAND ☐ TIMBER ☐ RECREATIONAL ☐ OTHER (Describe)
SUBDIVIDED: ☐ INDUSTRIAL ☐ COMMERCIAL ☐ RESIDENTIAL

PLANT COMMUNITY

☐ DISTURBED GRASSLAND
☐ NATIVE GRASSLAND
☐ SHRUB LAND
☐ PLAINS RIPARIAN
☐ MOUNTAIN RIPARIAN
☒ FOREST LAND
☐ WETLANDS AQUATIC
☐ ALPINE
☐ OTHER (Describe):

CURRENT LAND USE

CROP LAND: ☐ IRRIGATED ☐ DRY LAND ☐ IMPROVED PASTURE ☐ HAY MEADOW ☐ CRP
NON-CROP LAND: ☒ RANGELAND ☐ TIMBER ☐ RECREATIONAL ☐ OTHER (Describe)
SUBDIVIDED: ☐ INDUSTRIAL ☐ COMMERCIAL ☐ RESIDENTIAL