

GUNNISON ENERGY CORPORATION

TYPICAL RIG LAYOUT FOR
DEADMAN GULCH UNIT SECTION 18 PAD
SECTION 18, T12S, R89W, 6th P.M.
N 1/2

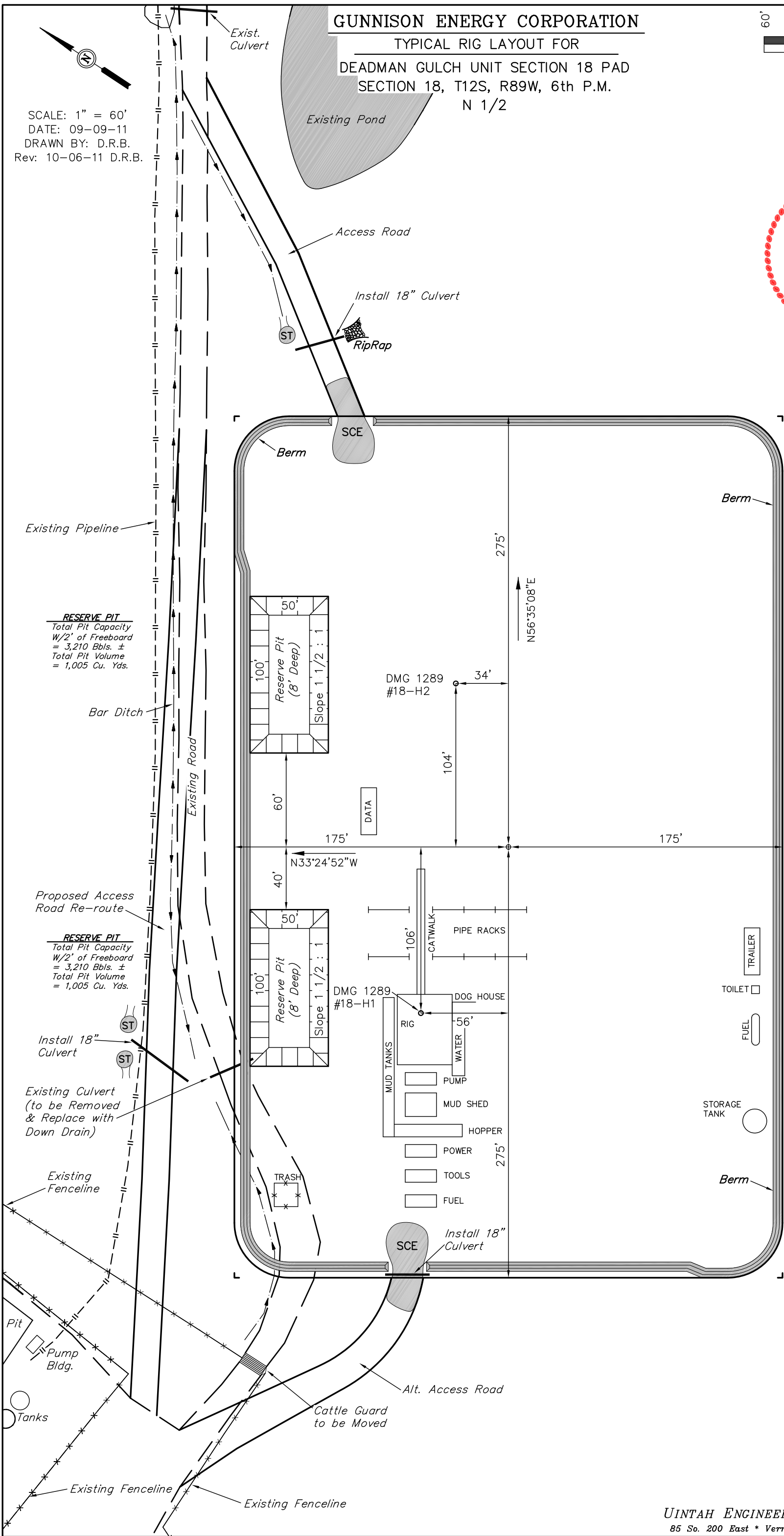
60' 30' 0' 60'



SCALE

FIGURE #4

SCALE: 1" = 60'
DATE: 09-09-11
DRAWN BY: D.R.B.
Rev: 10-06-11 D.R.B.



SWAMP LEGEND:
SCE - STABILIZED
CONSTRUCTION
ENTRANCE
ST - SEDIMENT TRAP