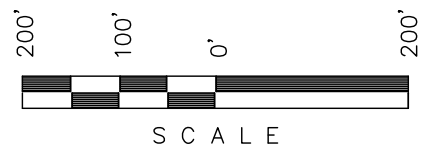
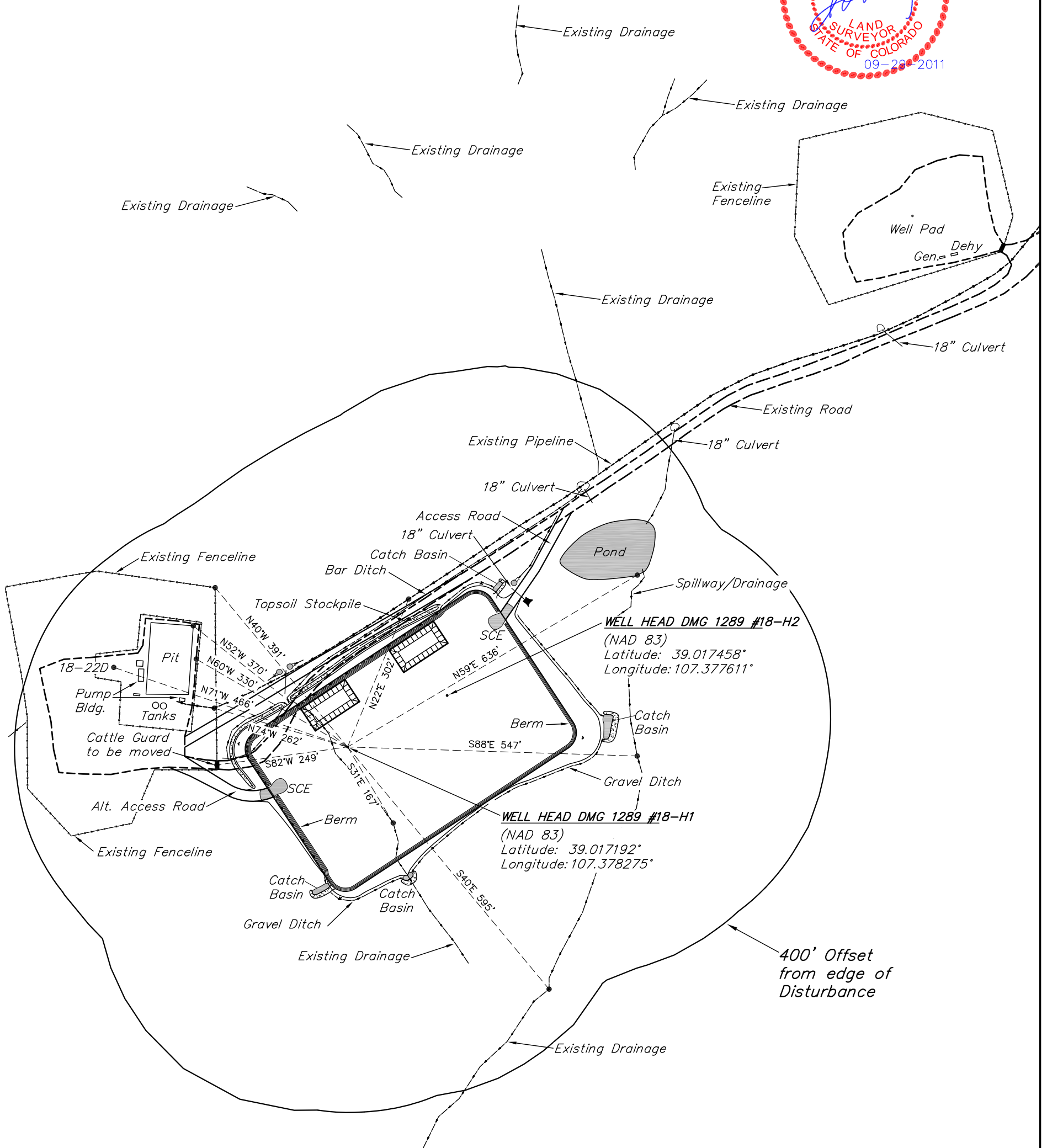


GUNNISON ENERGY CORPORATION
ADDENDUM TO LEGAL PLAT FOR
DEADMAN GULCH UNIT SECTION 18 PAD
SECTION 18, T12S, R89W, 6th P.M.
N 1/2



SCALE: 1" = 200'
DATE: 09-09-11
DRAWN BY: D.R.B.
Revised: 10-06-11 D.R.B.



SURFACE USE OF LOCATION IS
GRAZING, VEGETATION CONSISTS
MAINLY OF CEDAR, SAGEBRUSH,
& NATIVE GRASSES.