

GUNNISON ENERGY CORPORATION

T12S, R89W, 6th P.M.

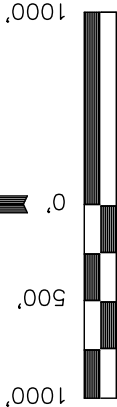
Well location, DEADMAN GULCH UNIT 1289 #18-H1 (SURFACE LOCATION), located as shown in the SE 1/4 NW 1/4 of Section 18, T12S, R89W, 6th P.M., Gunnison County, Colorado.

BASIS OF ELEVATION

SPOT ELEVATION LOCATED IN THE NE 1/4 OF SECTION 9, T11S, R90W, 6th P.M. TAKEN FROM THE BULL MOUNTAIN QUADRANGLE, COLORADO, GUNNISON COUNTY, 7.5 MINUTE SERIES (TOPOGRAPHICAL MAP) PUBLISHED BY THE UNITED STATES DEPARTMENT OF THE INTERIOR, GEOLOGICAL SURVEY. SAID ELEVATION IS MARKED AS BEING 7487 FEET.

BASIS OF BEARINGS

BASIS OF BEARINGS IS A G.P.S. OBSERVATION.



S C A L E

CERTIFICATE

THIS IS TO CERTIFY THAT THE ABOVE PLAT WAS PREPARED AND LOCATION AS SHOWN WAS STAKED ON THE GROUND FROM FIELD NOTES OF ACTUAL SURVEYS MADE BY ME OR UNDER MY SUPERVISION AND THAT THE SAME ARE TRUE AND CORRECT TO THE BEST OF MY KNOWLEDGE AND BELIEF.

REGISTERED LAND SURVEYOR
REGISTRATION NO. 17492
STATE OF COLORADO
09-20-2011

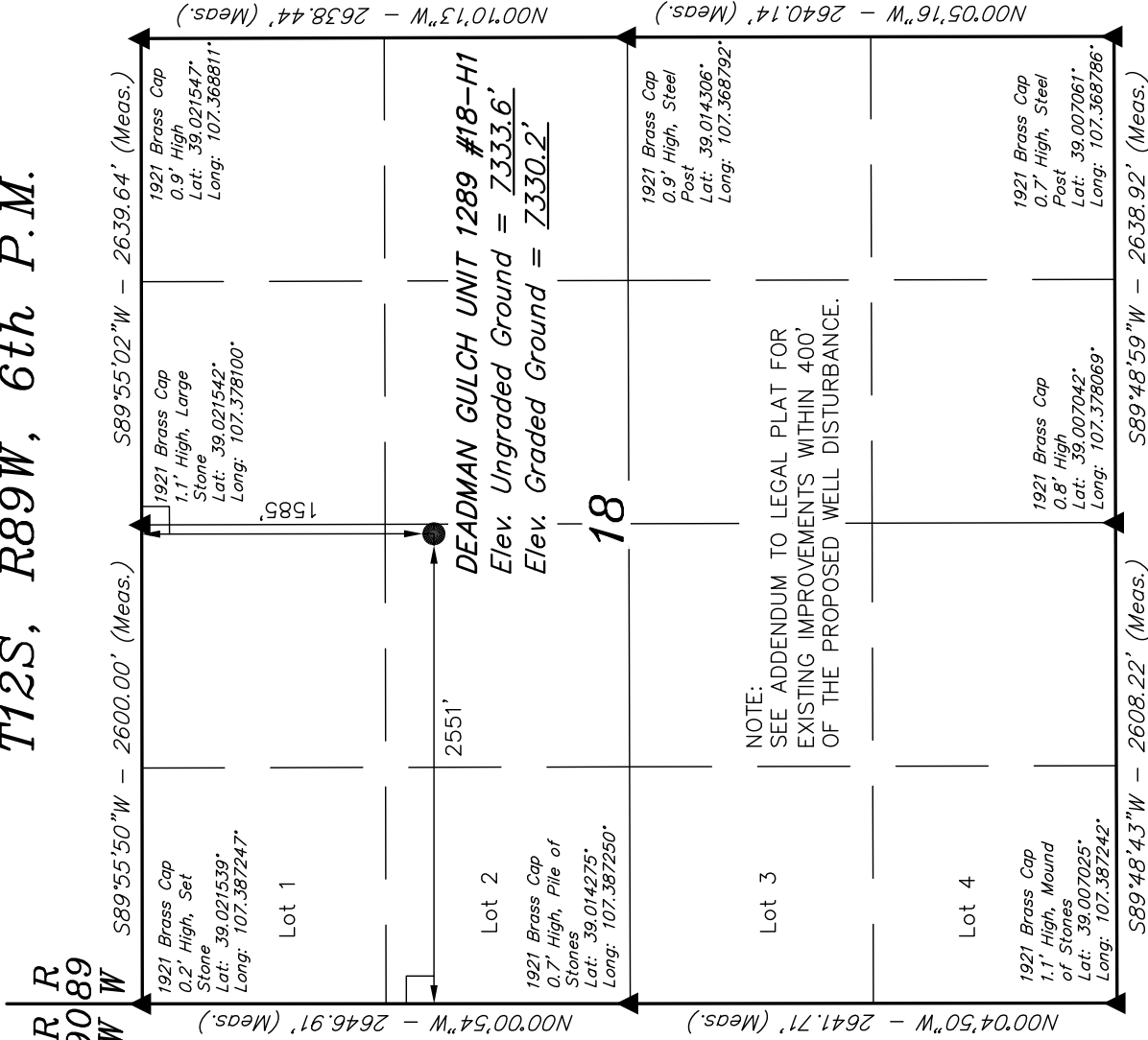
Revised: 10-06-11 D.R.B.

UTIAH ENGINEERING & LAND SURVEYING

85 SOUTH 200 EAST - VERNAL, UTAH 84078

(435) 789-1017

SCALE 1" = 1000'	DATE SURVEYED: 07-29-11	DATE DRAWN: 09-22-11
PARTY B.B. J.B. D.R.B.	REFERENCES G.L.O. PLAT	
WEATHER WARM	FILE	
GUNNISON ENERGY CORPORATION		



LEGEND:

— = 90° SYMBOL

● = PROPOSED WELL HEAD.

▲ = SECTION CORNERS LOCATED.

NOTE:
THE PROPOSED BOTTOM HOLE FOR THIS WELL IS LOCATED IN THE NE 1/4 NW 1/4 OF SECTION 13, T12S, R90W, 6th P.M. AT A DISTANCE OF 623' FNL 1675' FWL. IT BEARS N81°21'02"W 6261.46' FROM THE PROPOSED WELL HEAD.

PDOP = 1.2

NAD 83 (SURFACE LOCATION)	
LATITUDE = 39°01'01.89"	(39.017192)
LONGITUDE = 107°22'41.79"	(107.378275)
NAD 27 (SURFACE LOCATION)	
LATITUDE = 39°01'01.93"	(39.017203)
LONGITUDE = 107°22'39.60"	(107.377667)
UTM COORD.: NAD 1927/ZONE 13	
N: 14177030.525	E: 965043.826