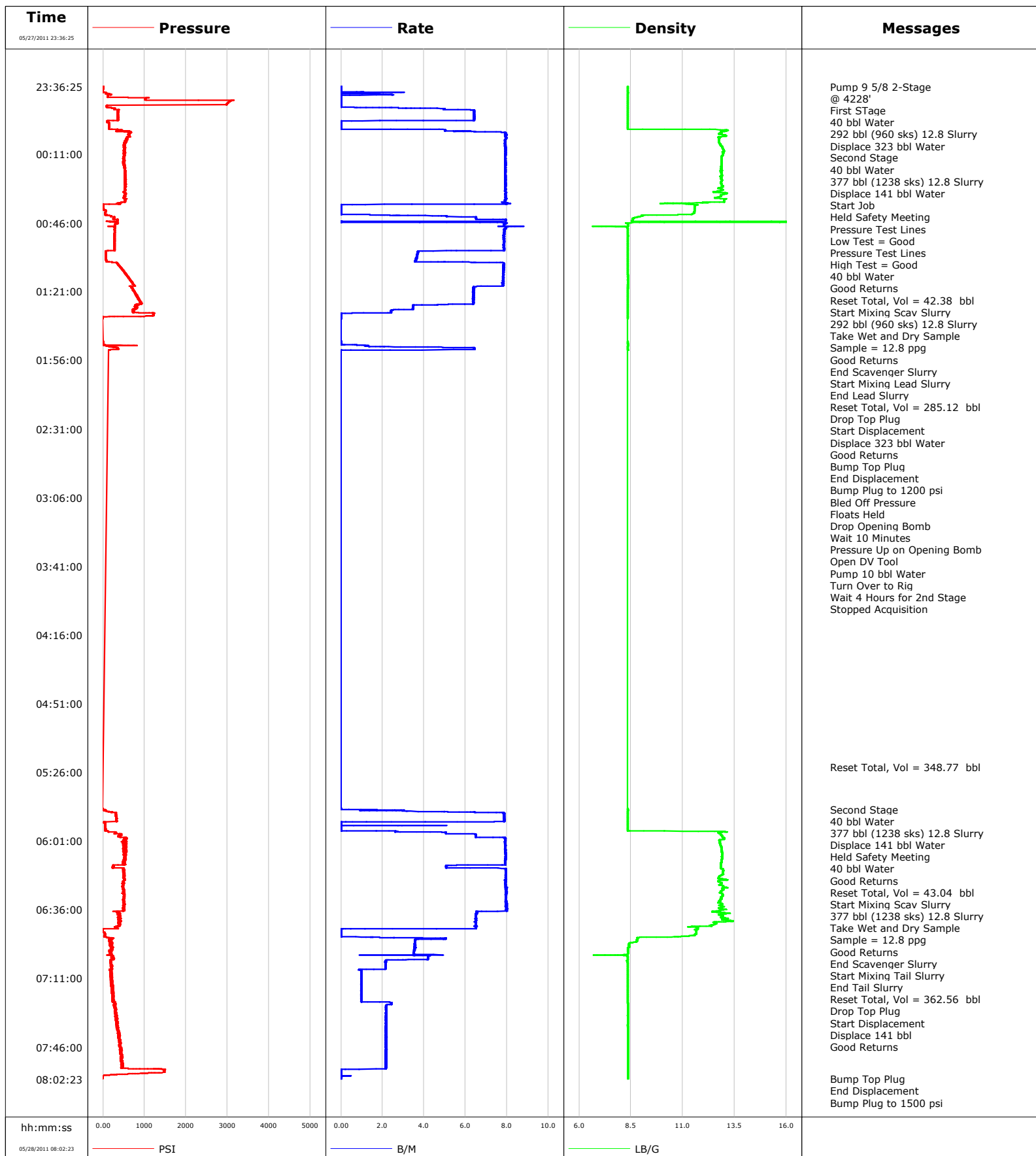


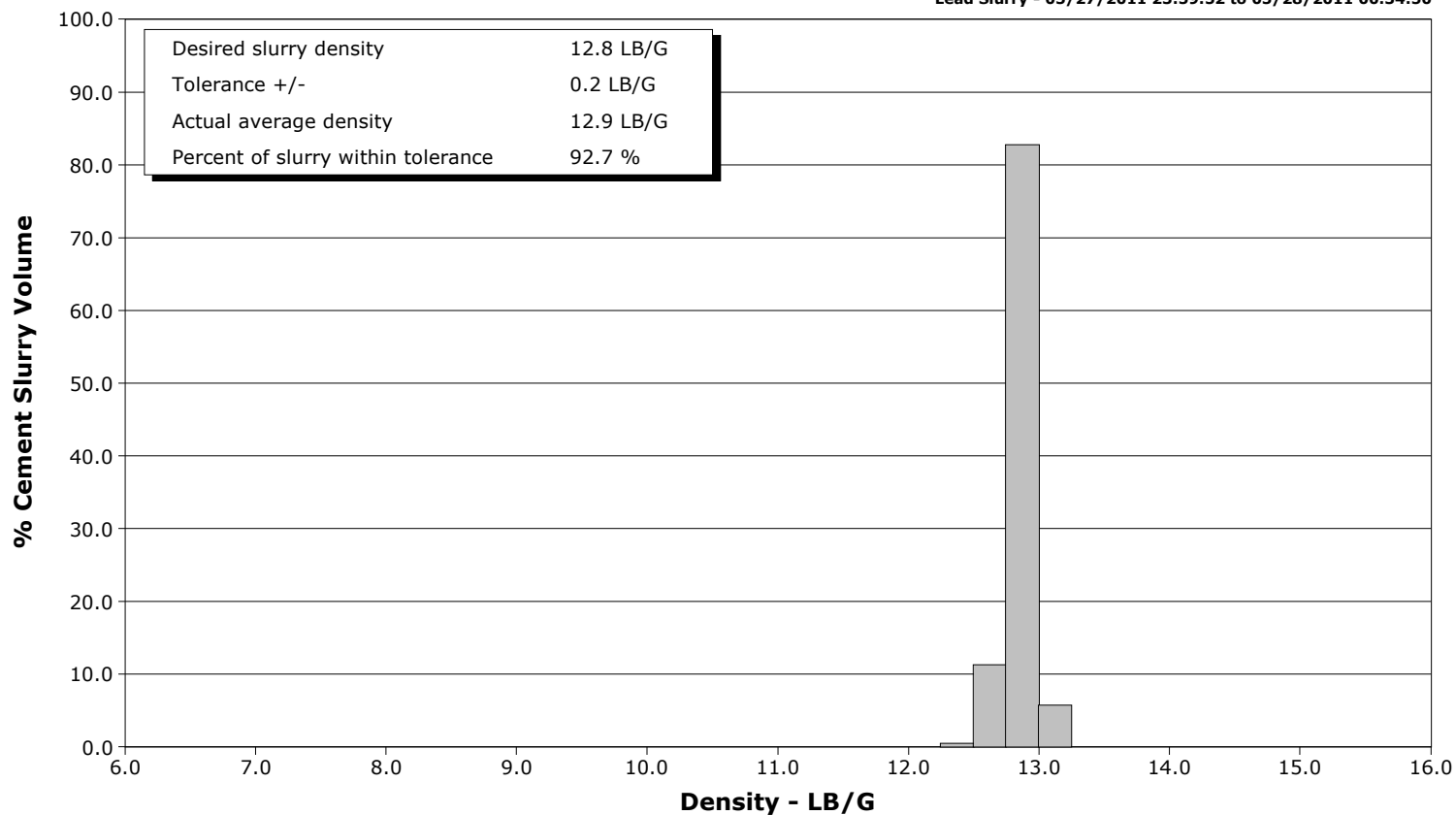
Well	RGU 21-25-198	Client	Williams
Field	Ryan Gulch	SIR No.	
Engineer	Tom Leduc	Job Type	9 5/8" 2-Stage Surface @ 4228'
Country	United States	Job Date	05-27-2011



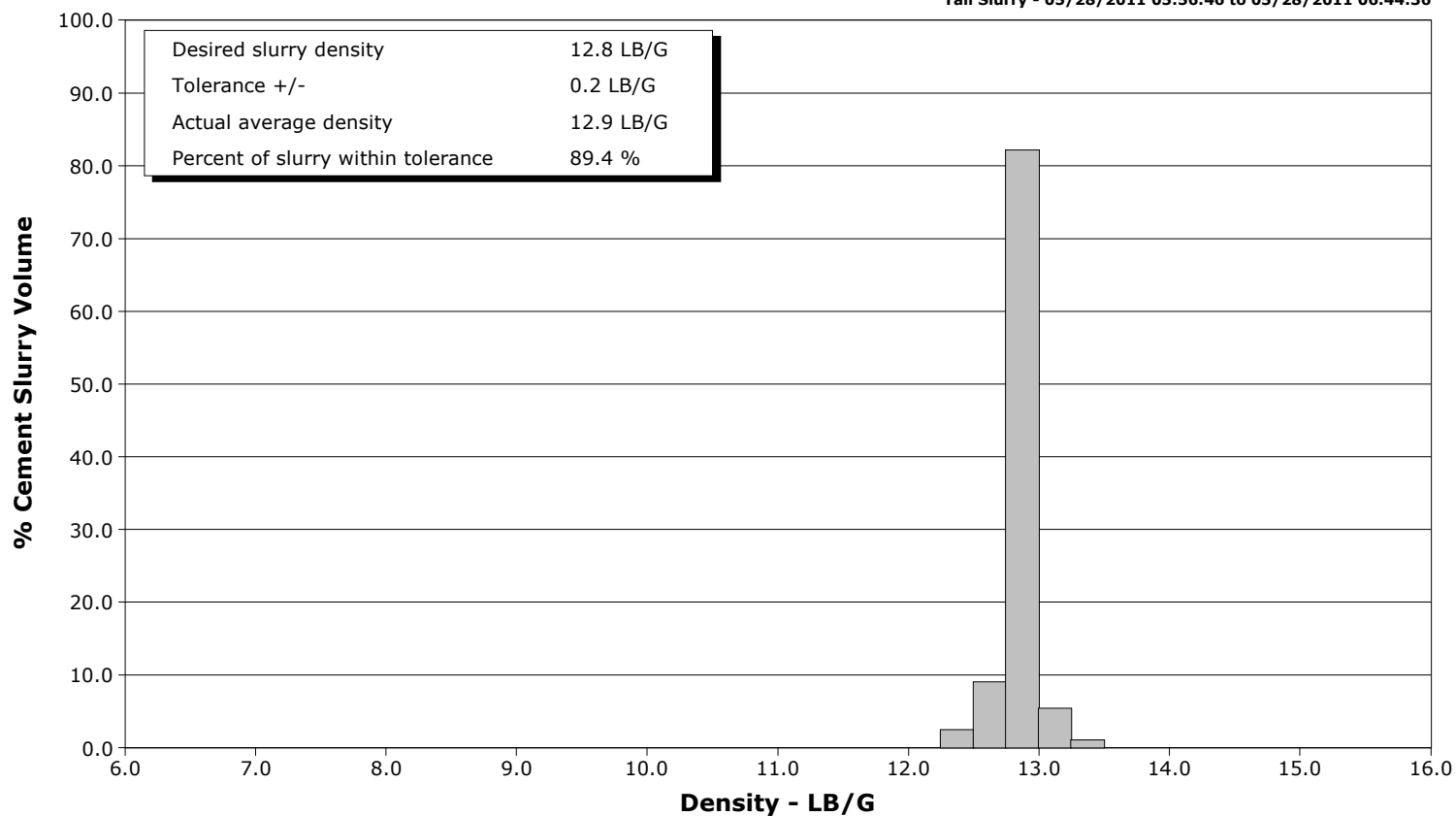
Well RGU 21-25-198
Field Ryan Gulch
Engineer Tom Leduc
Country United States

Client Williams
SIR No.
Job Type 9 5/8" 2-Stage Surface @ 4228'
Job Date 05-27-2011

Lead Slurry - 05/27/2011 23:59:52 to 05/28/2011 00:34:50



Tail Slurry - 05/28/2011 05:56:46 to 05/28/2011 06:44:36





Cementing Service Report

				Customer Williams		Job Number BQP3-00083	
Well RGU 21-25-198 RGU 21-25-198			Location (legal) Rifle, CO		Schlumberger Location Grand Junction		Job Start May/27/2011
Field Ryan Gulch		Formation Name/Type Shale		Deviation 0 deg	Bit Size 13.5 in	Well MD 4228.0 ft	Well TVD 4228.0 ft
County Rio Blanco		State/Province Colorado		BHP	BHST 122 degF	BHCT 89 degF	Pore Press. Gradient
Well Master 0631280354		API/UWI					
Rig Name Cyclone 29		Drilled For Gas	Service Via Land	Casing/Liner			
				Depth, ft	Size, in	Weight, lb/ft	Grade
Offshore Zone		Well Class New	Well Type Development	4228.0	9.630	36.0	J55
				0.0	0.000	0.0	
Drilling Fluid Type Bentonite		Max. Density 9.20 lb/gal	Plastic Viscosity 25.000 cP	Tubing/Drill Pipe			
				Depth,	Size,	Weight,	Grade
Service Line Cementing		Job Type 9 5/8" 2-Stage Surface @ 4228'					
Max. Allowed Tub. Press 3000 psi		Max. Allowed Ann. Press 500 psi	WH Connection Single Cement head	Perforations/Open Hole			
				Top,	Bottom,	No. of Shots	Total Interval
							Diameter
				Treat Down Casing	Displacement 323.0 bbl	Packer Type	Packer Depth
				Tubing Vol.	Casing Vol. 323.0 bbl	Annular Vol. 378.0 bbl	Openhole Vol. 564.0 bbl
Casing/Tubing Secured <input checked="" type="checkbox"/>		1 Hole Vol. Circulated prior to Cement <input checked="" type="checkbox"/>		Casing Tools		Squeeze Job	
Lift Pressure 2100 psi				Shoe Type Float		Squeeze Type	
Pipe Rotated <input type="checkbox"/>		Pipe Reciprocated <input type="checkbox"/>		Shoe Depth 4228.0 ft		Tool Type	
No. Centralizers		Top Plugs	Bottom Plugs	Stage Tool Type DV		Tool Depth	
Cement Head Type Single				Stage Tool Depth 1829.0 ft		Tail Pipe Size	
Job Scheduled For May/27/2011 19:00		Arrived on Location May/27/2011 19:00	Leave Location May/27/2011 08:00	Collar Type Float		Tail Pipe Depth	
				Collar Depth 4184.0 ft		Sqz. Total Vol.	
Date	Time 24-hr clock	Treating Pressure PSI	Flow Rate B/M	Density LB/G	Volume BBL	Message	
01/01/1970	00:00:02					Started Acquisition	
05/27/2011	23:36:25	0	0.0	8.35	0.0		
05/27/2011	23:36:33					Pump 9 5/8 2-Stage	
05/27/2011	23:36:33					@ 4228'	
05/27/2011	23:36:33					First STage	
05/27/2011	23:36:33	0	0.0	8.35	0.0		
05/27/2011	23:36:34					40 bbl Water	
05/27/2011	23:36:34					292 bbl (960 sks) 12.8 Slurry	
05/27/2011	23:36:34					Displace 323 bbl Water	
05/27/2011	23:36:34					Second Stage	
05/27/2011	23:36:34	0	0.0	8.35	0.0		
05/27/2011	23:36:35					40 bbl Water	
05/27/2011	23:36:35					377 bbl (1238 sks) 12.8 Slurry	
05/27/2011	23:36:35					Displace 141 bbl Water	
05/27/2011	23:36:35	0	0.0	8.35	0.0		
05/27/2011	23:36:37					Start Job	
05/27/2011	23:36:37	0	0.0	8.35	0.0		
05/27/2011	23:36:39					Held Safety Meeting	
05/27/2011	23:36:39	0	0.0	8.35	0.0		
05/27/2011	23:36:41					Pressure Test Lines	
05/27/2011	23:36:41	0	0.0	8.35	0.0		

Well			Field		Job Start		Customer		Job Number	
RGU 21-25-198 RGU 21-25-198			Ryan Gulch		May/27/2011		Williams		BQP3-00083	
Date	Time 24-hr clock	Treating Pressure PSI	Flow Rate B/M	Density LB/G	Volume BBL	Message				
05/27/2011	23:36:42	1	0.0	8.35	0.0					
05/27/2011	23:36:45					Pressure Test Lines				
05/27/2011	23:36:45	0	0.0	8.35	0.0					
05/27/2011	23:36:48					High Test = Good				
05/27/2011	23:36:48	0	0.0	8.35	0.0					
05/27/2011	23:36:52					40 bbl Water				
05/27/2011	23:36:52					Good Returns				
05/27/2011	23:36:52	1	0.0	8.35	0.0					
05/27/2011	23:37:32	0	0.0	8.35	0.0					
05/27/2011	23:40:02	77	0.0	8.35	0.6					
05/27/2011	23:42:32	1039	0.0	8.35	1.9					
05/27/2011	23:45:02	3004	0.0	8.35	1.9					
05/27/2011	23:47:32	217	3.0	8.35	2.5					
05/27/2011	23:50:02	351	6.5	8.35	16.8					
05/27/2011	23:52:32	353	6.4	8.35	32.9					
05/27/2011	23:54:37					Reset Total, Vol = 42.38 bbl				
05/27/2011	23:54:37	99	0.0	8.35	42.4					
05/27/2011	23:54:38					Start Mixing Scav Slurry				
05/27/2011	23:54:38					292 bbl (960 sks) 12.8 Slurry				
05/27/2011	23:54:38					Take Wet and Dry Sample				
05/27/2011	23:54:38					Sample = 12.8 ppg				
05/27/2011	23:54:38	99	0.0	8.35	42.4					
05/27/2011	23:54:40					Good Returns				
05/27/2011	23:54:40	99	0.0	8.35	42.4					
05/27/2011	23:55:02	137	0.0	8.35	42.4					
05/27/2011	23:57:32	149	0.0	8.35	42.4					
05/27/2011	23:59:51					End Scavenger Slurry				
05/27/2011	23:59:51	669	7.7	12.83	50.0					
05/27/2011	23:59:52					Start Mixing Lead Slurry				
05/27/2011	23:59:52	684	7.7	12.83	50.1					
05/28/2011	00:00:02	671	7.9	12.84	51.4					
05/28/2011	00:02:32	590	7.9	12.72	71.2					
05/28/2011	00:05:02	518	7.9	12.75	91.1					
05/28/2011	00:07:32	520	7.9	12.91	110.8					
05/28/2011	00:10:02	501	7.9	12.92	130.7					
05/28/2011	00:12:32	496	7.9	12.87	150.5					
05/28/2011	00:15:02	497	7.9	12.88	170.3					
05/28/2011	00:17:32	522	7.9	12.86	190.1					
05/28/2011	00:20:02	534	7.9	12.85	209.9					
05/28/2011	00:22:32	520	7.9	12.82	229.7					
05/28/2011	00:25:02	543	7.9	12.87	249.5					
05/28/2011	00:27:32	545	7.9	12.95	269.4					
05/28/2011	00:30:02	515	7.9	12.70	289.2					
05/28/2011	00:32:32	528	7.9	12.84	309.0					
05/28/2011	00:34:50					End Lead Slurry				
05/28/2011	00:34:50	534	7.9	12.99	327.2					
05/28/2011	00:34:52					Reset Total, Vol = 285.12 bbl				
05/28/2011	00:34:52	526	7.9	12.99	327.5					
05/28/2011	00:34:53					Drop Top Plug				
05/28/2011	00:34:53	526	7.9	12.99	327.6					
05/28/2011	00:34:54					Start Displacement				
05/28/2011	00:34:54	535	7.9	12.99	327.8					
05/28/2011	00:34:58					Displace 323 bbl Water				
05/28/2011	00:34:58					Good Returns				

Well RGU 21-25-198 RGU 21-25-198			Field Ryan Gulch		Job Start May/27/2011	Customer Williams	Job Number BQP3-00083
Date	Time 24-hr clock	Treating Pressure PSI	Flow Rate B/M	Density LB/G	Volume BBL	Message	
05/28/2011	00:35:02	520	7.9	12.99	328.8		
05/28/2011	00:37:32	2	0.0	11.55	341.6		
05/28/2011	00:40:02	62	0.0	11.55	341.6		
05/28/2011	00:42:32	184	4.8	9.05	343.2		
05/28/2011	00:45:02	344	7.9	8.55	359.9		
05/28/2011	00:47:32	289	7.8	8.36	374.9		
05/28/2011	00:50:02	282	7.9	8.35	394.7		
05/28/2011	00:52:32	279	7.8	8.35	414.4		
05/28/2011	00:55:02	281	7.9	8.35	434.0		
05/28/2011	00:57:32	282	7.8	8.36	453.7		
05/28/2011	01:00:02	281	7.9	8.36	473.3		
05/28/2011	01:02:32	65	3.7	8.36	483.7		
05/28/2011	01:05:02	72	3.6	8.35	492.8		
05/28/2011	01:07:32	365	7.8	8.36	507.7		
05/28/2011	01:10:02	474	7.8	8.36	527.3		
05/28/2011	01:12:32	557	7.8	8.36	546.9		
05/28/2011	01:15:02	650	7.8	8.36	566.4		
05/28/2011	01:17:32	735	7.8	8.36	586.0		
05/28/2011	01:20:02	711	6.4	8.36	603.3		
05/28/2011	01:22:32	804	6.4	8.36	619.3		
05/28/2011	01:25:02	865	6.4	8.35	635.2		
05/28/2011	01:27:32	800	6.0	8.35	651.2		
05/28/2011	01:30:02	768	3.5	8.35	660.5		
05/28/2011	01:32:32	1216	0.0	8.35	665.7		
05/28/2011	01:34:48					Bump Top Plug	
05/28/2011	01:34:48	-3	0.0	8.35	665.7		
05/28/2011	01:34:49					End Displacement	
05/28/2011	01:34:49	-3	0.0	8.35	665.7		
05/28/2011	01:34:50					Bump Plug to 1200 psi	
05/28/2011	01:34:50					Bled Off Pressure	
05/28/2011	01:34:50	-3	0.0	8.35	665.7		
05/28/2011	01:34:51					Floats Held	
05/28/2011	01:34:51					Drop Opening Bomb	
05/28/2011	01:34:51					Wait 10 Minutes	
05/28/2011	01:34:51	-3	0.0	8.35	665.7		
05/28/2011	01:46:55					Pressure Up on Opening Bomb	
05/28/2011	01:46:55	0	0.0	8.36	665.7		
05/28/2011	01:46:56					Open DV Tool	
05/28/2011	01:46:56					Pump 10 bbl Water	
05/28/2011	01:46:56	0	0.0	8.36	665.7		
05/28/2011	01:47:32	0	0.0	8.36	665.7		
05/28/2011	01:47:45					Turn Over to Rig	
05/28/2011	01:47:45					Wait 4 Hours for 2nd Stage	
05/28/2011	01:47:45	1	0.0	8.36	665.7		
05/28/2011	01:50:02	337	6.4	8.35	671.2		
05/28/2011	05:44:48					Second Stage	
05/28/2011	05:44:48					40 bbl Water	
05/28/2011	05:44:48					377 bbl (1238 sks) 12.8 Slurry	
05/28/2011	05:44:48	-4	0.0	8.35	676.3		
05/28/2011	05:44:49					Displace 141 bbl Water	
05/28/2011	05:44:49					Held Safety Meeting	
05/28/2011	05:44:49	-4	0.0	8.35	676.3		
05/28/2011	05:44:50					40 bbl Water	
05/28/2011	05:44:50					Good Returns	

Well RGU 21-25-198 RGU 21-25-198			Field Ryan Gulch		Job Start May/27/2011	Customer Williams	Job Number BQP3-00083
Date	Time 24-hr clock	Treating Pressure PSI	Flow Rate B/M	Density LB/G	Volume BBL	Message	
05/28/2011	05:45:02	-5	0.0	8.35	676.3		
05/28/2011	05:47:32	316	7.9	8.35	689.0		
05/28/2011	05:50:02	317	7.9	8.35	708.6		
05/28/2011	05:52:32	50	0.0	8.35	719.0		
05/28/2011	05:53:23					Reset Total, Vol = 43.04 bbl	
05/28/2011	05:53:23	48	0.0	8.35	719.3		
05/28/2011	05:53:26					Start Mixing Scav Slurry	
05/28/2011	05:53:26	48	0.0	8.35	719.3		
05/28/2011	05:53:27					377 bbl (1238 sks) 12.8 Slurry	
05/28/2011	05:53:27					Take Wet and Dry Sample	
05/28/2011	05:53:27	48	0.0	8.35	719.3		
05/28/2011	05:53:28					Sample = 12.8 ppg	
05/28/2011	05:53:28					Good Returns	
05/28/2011	05:53:28	49	0.0	8.35	719.3		
05/28/2011	05:55:02	60	0.0	8.35	719.3		
05/28/2011	05:56:45					End Scavenger Slurry	
05/28/2011	05:56:45	297	5.0	12.72	721.8		
05/28/2011	05:56:46					Start Mixing Tail Slurry	
05/28/2011	05:56:46	308	5.0	12.72	721.9		
05/28/2011	05:57:32	401	6.3	12.82	725.8		
05/28/2011	06:00:02	530	8.0	12.99	743.2		
05/28/2011	06:02:32	554	7.9	12.79	763.0		
05/28/2011	06:05:02	486	7.9	12.87	782.8		
05/28/2011	06:07:32	508	7.9	12.91	802.6		
05/28/2011	06:10:02	512	7.9	12.88	822.4		
05/28/2011	06:12:32	483	7.9	12.84	842.2		
05/28/2011	06:15:02	486	7.8	12.84	857.8		
05/28/2011	06:17:32	514	7.9	12.94	877.6		
05/28/2011	06:20:02	494	7.9	12.71	897.5		
05/28/2011	06:22:32	497	7.9	12.88	917.3		
05/28/2011	06:25:02	483	7.9	13.00	937.1		
05/28/2011	06:27:32	508	8.0	12.82	957.0		
05/28/2011	06:30:02	509	7.9	12.87	976.9		
05/28/2011	06:32:32	499	7.9	12.71	996.8		
05/28/2011	06:35:02	500	8.0	12.84	1016.7		
05/28/2011	06:37:32	378	6.6	12.88	1035.8		
05/28/2011	06:40:02	371	6.5	12.82	1052.1		
05/28/2011	06:42:32	394	6.5	12.48	1068.3		
05/28/2011	06:44:36					End Tail Slurry	
05/28/2011	06:44:36	348	6.4	12.38	1081.8		
05/28/2011	06:44:37					Reset Total, Vol = 362.56 bbl	
05/28/2011	06:44:37					Drop Top Plug	
05/28/2011	06:44:37	348	6.4	12.12	1081.9		
05/28/2011	06:44:39					Start Displacement	
05/28/2011	06:44:39	353	6.4	11.83	1082.1		
05/28/2011	06:44:55					Displace 141 bbl	
05/28/2011	06:44:55					Good Returns	
05/28/2011	06:44:55	296	6.5	11.43	1083.8		
05/28/2011	06:45:02	332	6.5	11.64	1084.6		
05/28/2011	06:47:32	-12	0.0	11.65	1089.5		
05/28/2011	06:50:02	74	1.0	10.47	1089.5		
05/28/2011	06:52:32	160	3.6	8.75	1098.6		
05/28/2011	06:55:02	192	3.5	8.41	1107.5		
05/28/2011	06:57:32	173	3.5	8.36	1116.4		

Well			Field		Job Start		Customer		Job Number	
RGU 21-25-198 RGU 21-25-198			Ryan Gulch		May/27/2011		Williams		BQP3-00083	
Date	Time 24-hr clock	Treating Pressure PSI	Flow Rate B/M	Density LB/G	Volume BBL	Message				
05/28/2011	07:02:32	195	2.2	8.34	1134.3					
05/28/2011	07:05:02	184	2.1	8.35	1139.7					
05/28/2011	07:07:32	176	1.0	8.35	1143.8					
05/28/2011	07:10:02	182	1.0	8.35	1146.3					
05/28/2011	07:12:32	193	1.0	8.36	1148.7					
05/28/2011	07:15:02	241	1.0	8.36	1151.2					
05/28/2011	07:17:32	208	1.0	8.36	1153.6					
05/28/2011	07:20:02	218	1.0	8.36	1156.1					
05/28/2011	07:22:32	257	1.0	8.36	1158.5					
05/28/2011	07:25:02	270	2.2	8.36	1163.5					
05/28/2011	07:27:32	295	2.2	8.36	1168.9					
05/28/2011	07:30:02	302	2.2	8.36	1174.3					
05/28/2011	07:32:32	326	2.2	8.36	1179.8					
05/28/2011	07:35:02	342	2.2	8.35	1185.2					
05/28/2011	07:37:32	349	2.2	8.36	1190.6					
05/28/2011	07:40:02	397	2.2	8.36	1196.1					
05/28/2011	07:42:32	394	2.2	8.36	1201.5					
05/28/2011	07:45:02	421	2.2	8.36	1206.9					
05/28/2011	07:47:32	436	2.2	8.36	1212.4					
05/28/2011	07:50:02	458	2.2	8.36	1217.8					
05/28/2011	07:52:32	450	2.2	8.36	1223.2					
05/28/2011	07:55:02	479	2.2	8.36	1228.6					
05/28/2011	07:57:32	1448	0.0	8.36	1233.6					
05/28/2011	08:00:02	435	0.0	8.36	1233.6					
05/28/2011	08:02:12					Bump Top Plug				
05/28/2011	08:02:12	-13	0.0	8.36	1233.8					
05/28/2011	08:02:13					End Displacement				
05/28/2011	08:02:13	-13	0.0	8.36	1233.8					
05/28/2011	08:02:14					Bump Plug to 1500 psi				
05/28/2011	08:02:14					Bled Off Pressure				
05/28/2011	08:02:14					DV Tool Closed				
05/28/2011	08:02:14	-12	0.0	8.36	1233.8					
05/28/2011	08:02:15					140 bbl Cement Back to Surface				
05/28/2011	08:02:15	-12	0.0	8.36	1233.8					
05/28/2011	08:02:19					End Job				

Post Job Summary

Average Pump Rates, bbl/min					Volume of Fluid Injected, bbl						
Slurry 5.5	N2	Mud 0.0	Maximum Rate 8.8		Total Slurry 1233.8	Mud 0.0	Spacer 50.0	N2			
Treating Pressure Summary, psi					Breakdown Fluid						
Maximum 3157	Final 0	Average 419	Bump Plug to 1500	Breakdown	Type FreshWater	Volume 1180.0 bbl		Density 8.34 lb/gal			
Avg. N2 Percent		Designed Slurry Volume 600.0 bbl		Displacement 490.2 bbl		Cement Circulated to Surface?		<input checked="" type="checkbox"/>	Volume		
						Washed Thru Perfs		<input type="checkbox"/>	To		
Customer or Authorized Representative Andrew Brunk			Schlumberger Supervisor Tom Leduc			Circulation Lost		<input type="checkbox"/>	Job Completed		
						-		<input type="checkbox"/>	-		