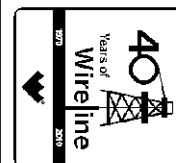


**Weatherford****HOLE VOLUME****CALIPER****LOG****FINAL PRINT**

COMPANY

WEXPRO COMPANY

WELL

JACKS DRAW UNIT 18

FIELD

POWDER WASH

PROVINCE/COUNTY

MOFFAT

COUNTRY/STATE

U.S.A. / COLORADO

LOCATION

SHL: 933' FNL & 1503' FWL

SEC

TWP

12N

RGE

97W

Other Services
MPD/MDN
MAI/MFE

API Number

05-081-07635

Permit Number

Permanent Datum G.L., Elevation 6570 feet

Log Measured From KB

Drilling Measured From K.B.

Date

10-NOV-2011

Run Number

ONE

Depth Driller

9087.00

feet

Depth Logger

9087.00

feet

First Reading

9037.00

feet

Last Reading

1525.00

feet

Casing Driller

1523.00

feet

Casing Logger

1525.00

feet

Bit Size

7.875

inches

Hole Fluid Type

LSND

Density / Viscosity

10.40 lb/USg

39.00 CP

PH / Fluid Loss

9.90

6.80 ml/30Min

Sample Source

FLOWLINE

Rm @ Measured Temp

1.50 @ 74.7

ohm-m

Rmf @ Measured Temp

1.20 @ 74.7

ohm-m

Rmc @ Measured Temp

1.80 @ 74.7

ohm-m

Source Rmf / Rmc

CALC

CALC

Rm @ BHT

0.761 @151.0

ohm-m

Time Since Circulation

0.5 HOURS

deg F

Max Recorded Temp

151.00

deg F

Equipment Name

COMPACT

Equipment / Base

18063

CASPER

Recorded By

J. BOON

Witnessed By

R. BUSH

BOREHOLE RECORD

Last Edited: 10-NOV-2011 06:52

Bit Size
inches

7.875

Depth From
feet

1523.00

Depth To
feet

9087.00

CASING RECORD

Type

Size
inches

9.625

Depth From
feet

0.00

Shoe Depth
feet

1523.00

Weight
pounds/ft

36.00

REMARKS

SOFTWARE VERSION USED: 11.03.4044

TOOLS CONVEYED VIA CML WELL SHUTTLE

ALL DEPTHS RECORDED WITH WEATHERFORD PASON DEPTH SYSTEM
ALL DEPTHS CORRECTED TO DRILLER'S STRAP DEPTH

MCG, MDN, MPD, MFE, MAI RAN IN COMBINATION

HARDWARE USED: SEE TOOL DIAGRAM

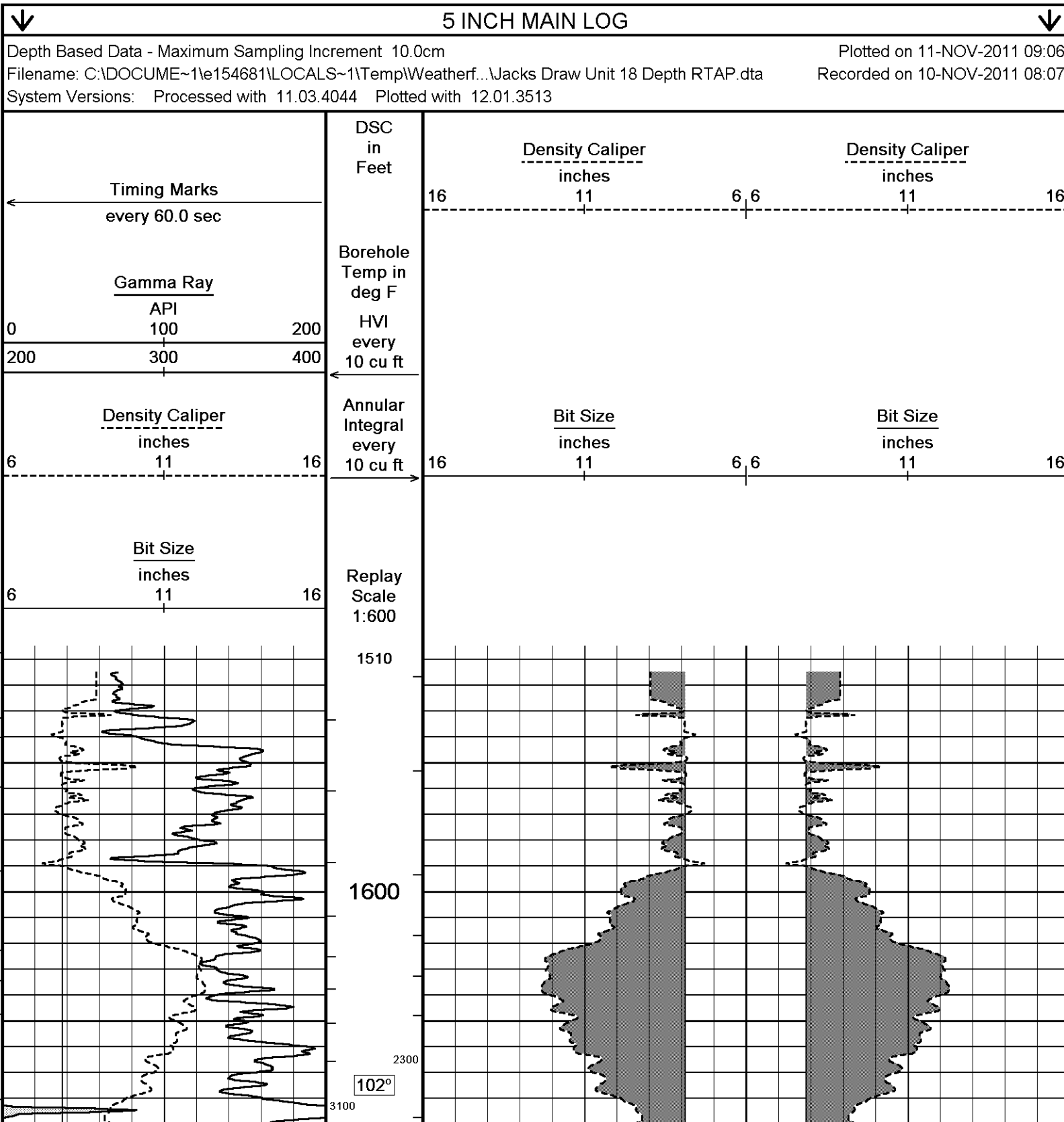
CUSTOMER'S SCALES USED AND INTERVALS LOGGED

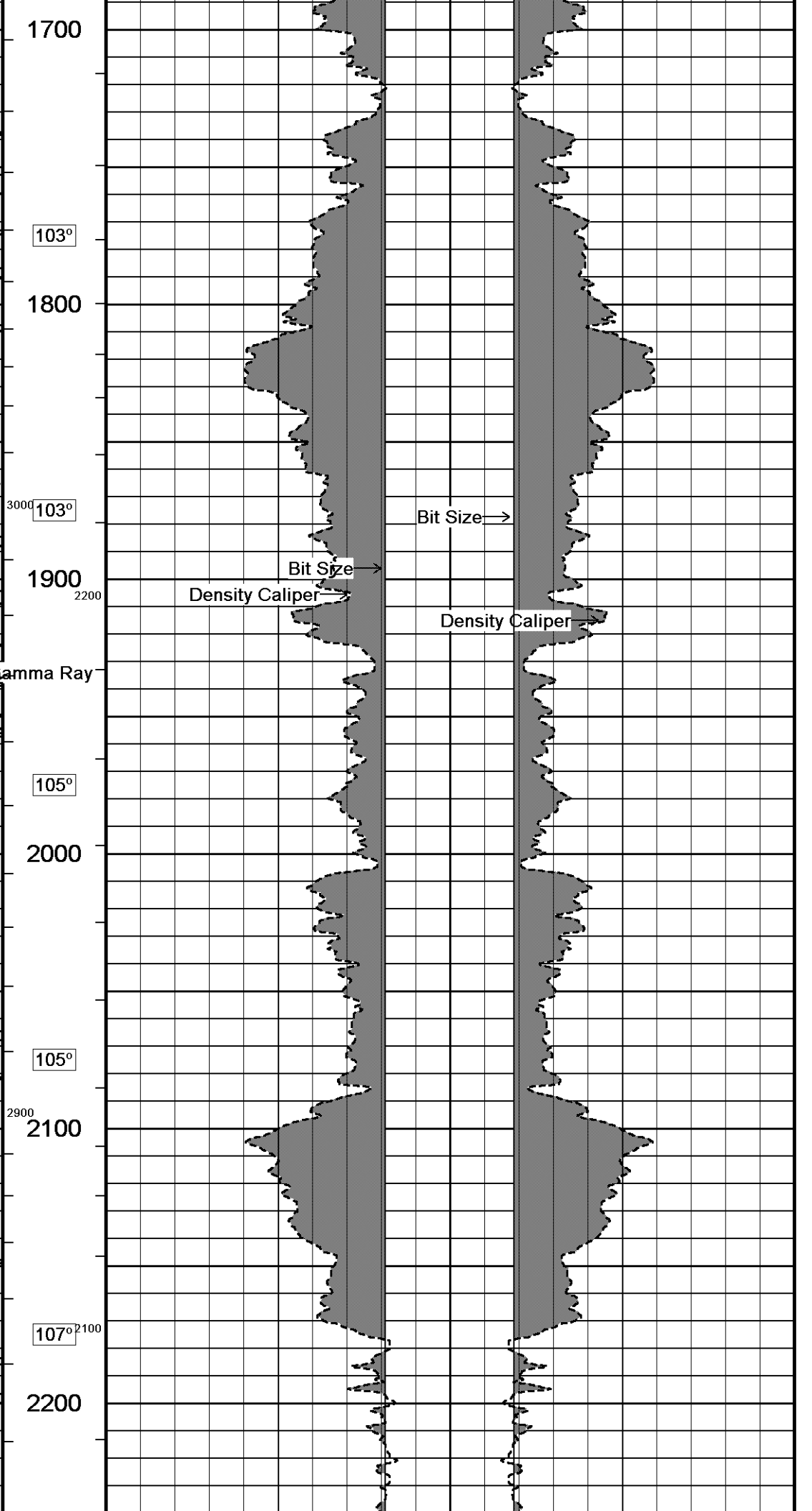
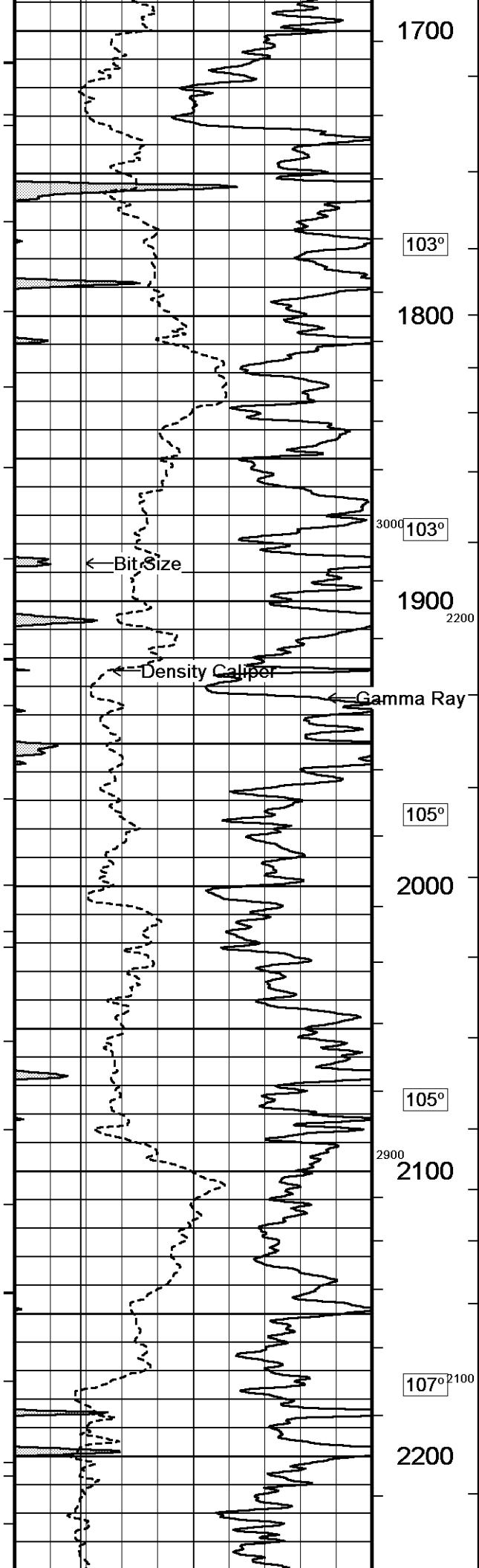
4.5 INCH PRODUCTION CASING USED TO CALCULATE ANNULAR HOLE VOLUME.
ANNULAR HOLE VOLUME: 2360 CUBIC FEET
HOLE VOLUME: 3180 CUBIC FEET

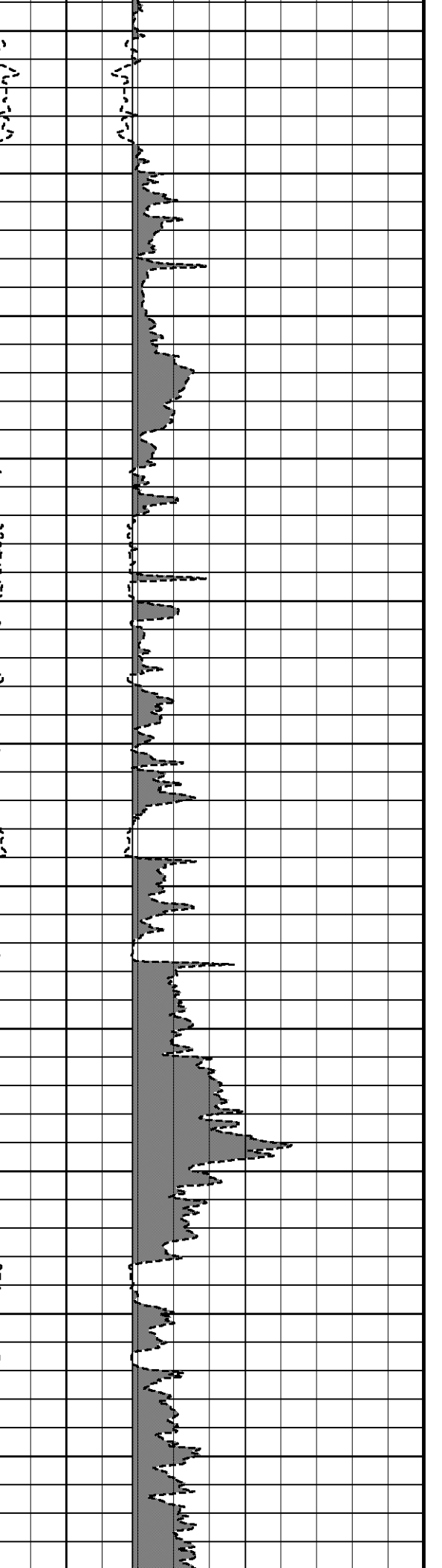
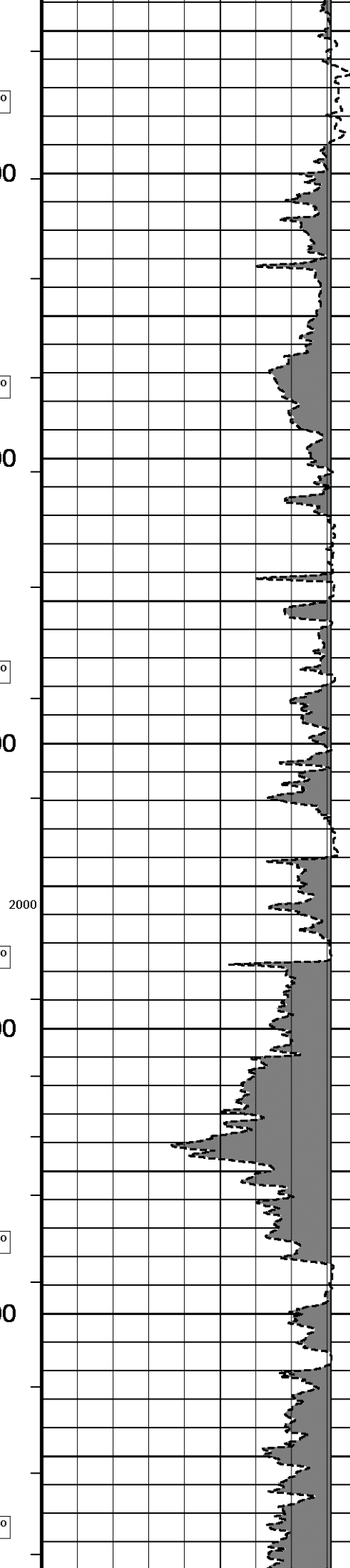
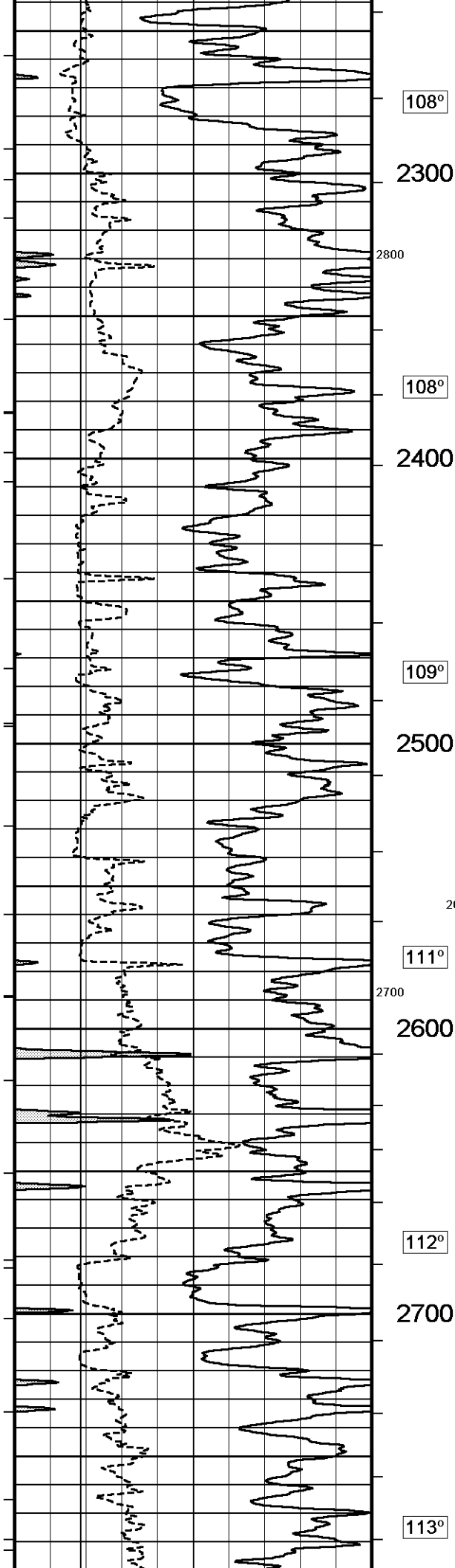
BOREHOLE SIZE AND RUGOSITY WILL AFFECT DATA QUALITY

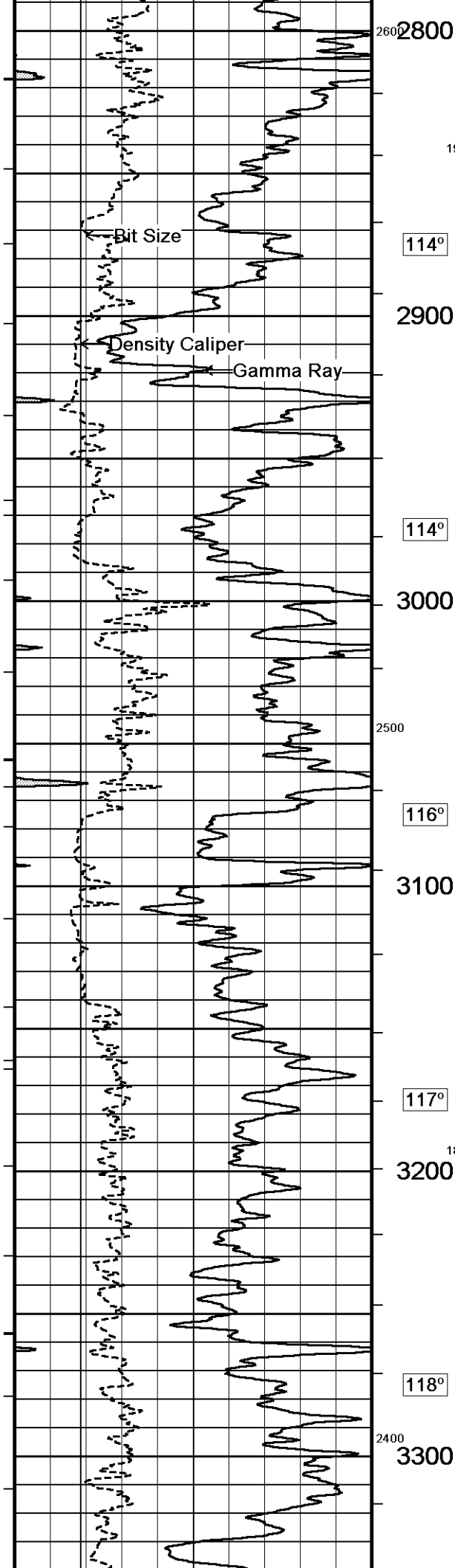
BOREHOLE SIZE AND LOGGING WILL AFFECT DATA QUALITY
DENSITY CORRECTION AFFECTED BY WASHED OUT HOLE. READS PROPERLY IN GAUGE SECTIONS OF BOREHOLE
TIGHT PULLS WILL AFFECT DATA QUALITY
RIG: SST 88
SERVICE ORDER #3529618

All interpretations are opinions based on inferences from electrical or other measurements and we cannot, and do not, guarantee the accuracy or correctness of any interpretations, and we shall not, except in the case of gross or wilful negligence on our part, be liable or responsible for any loss, costs, damages or expenses incurred or sustained by anyone resulting from any interpretation made by any of our officers, agents or employees. These interpretations are also subject to our general terms and conditions in our price schedule.









2800

1900

114°

2900

114°

3000

2500

116°

3100

117°

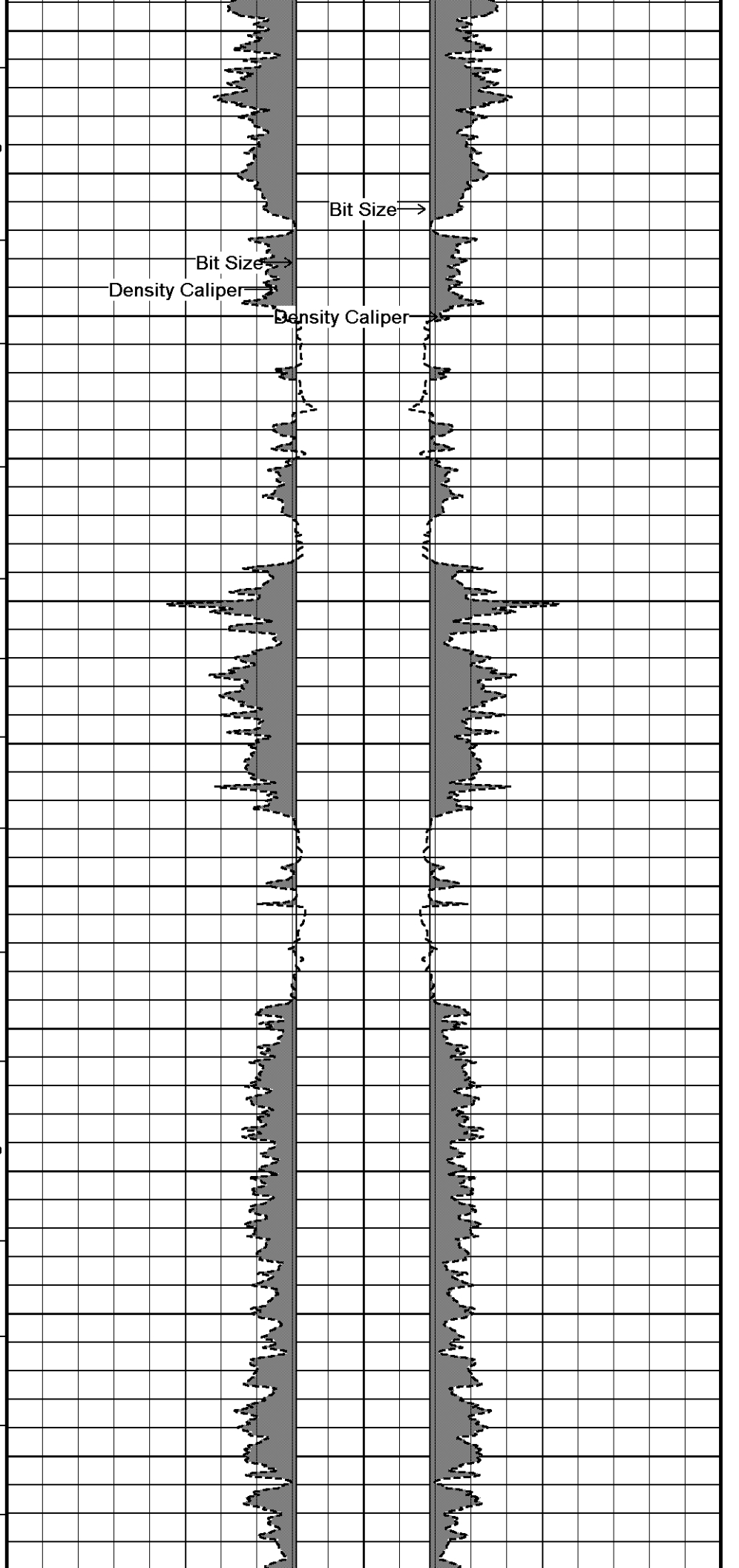
1800

3200

118°

2400

3300

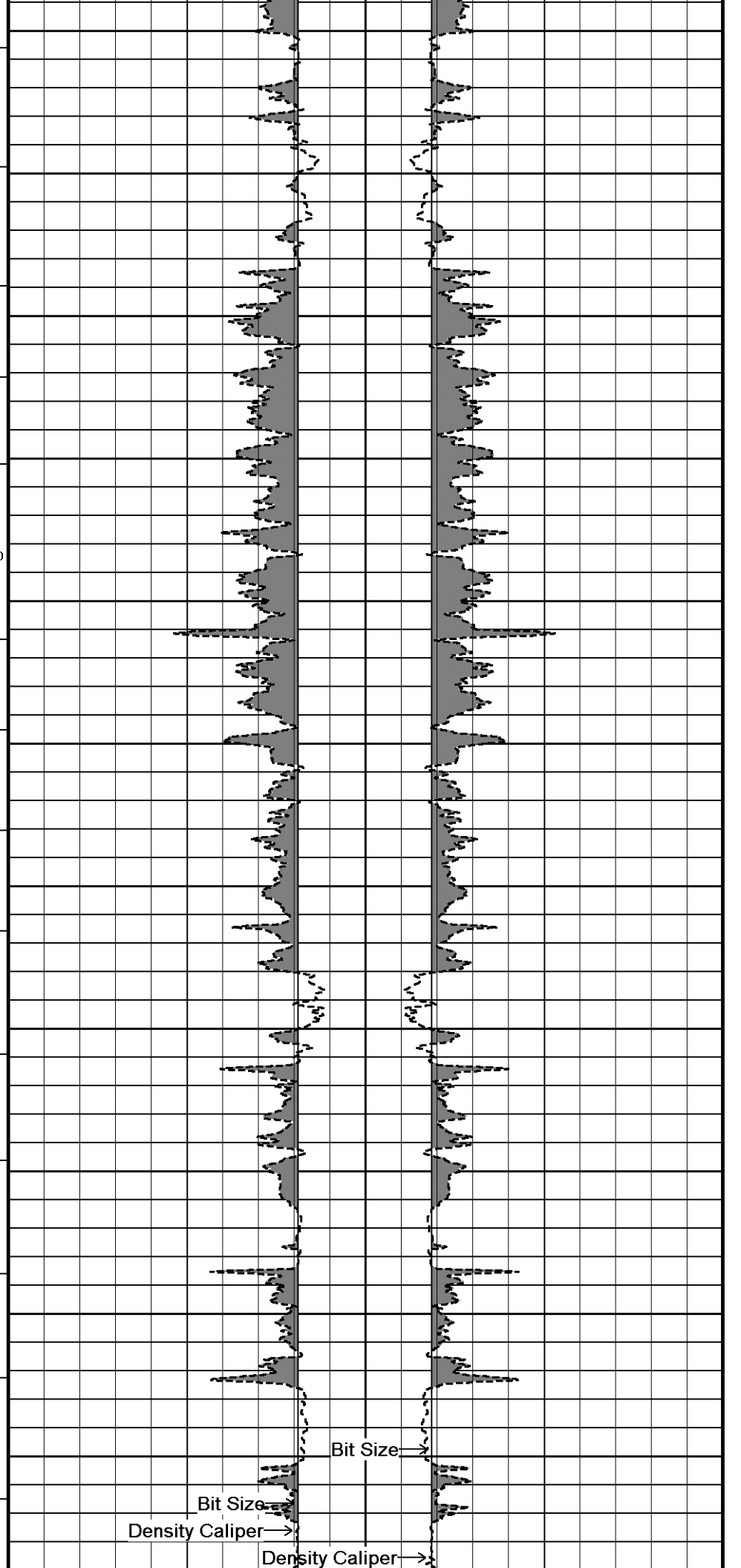
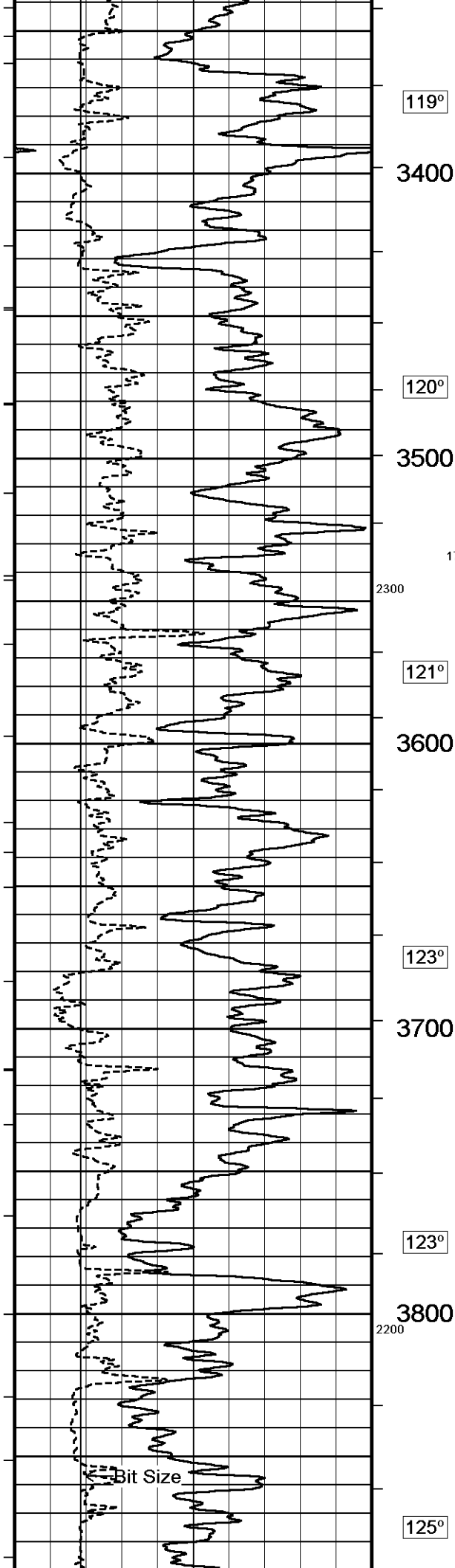


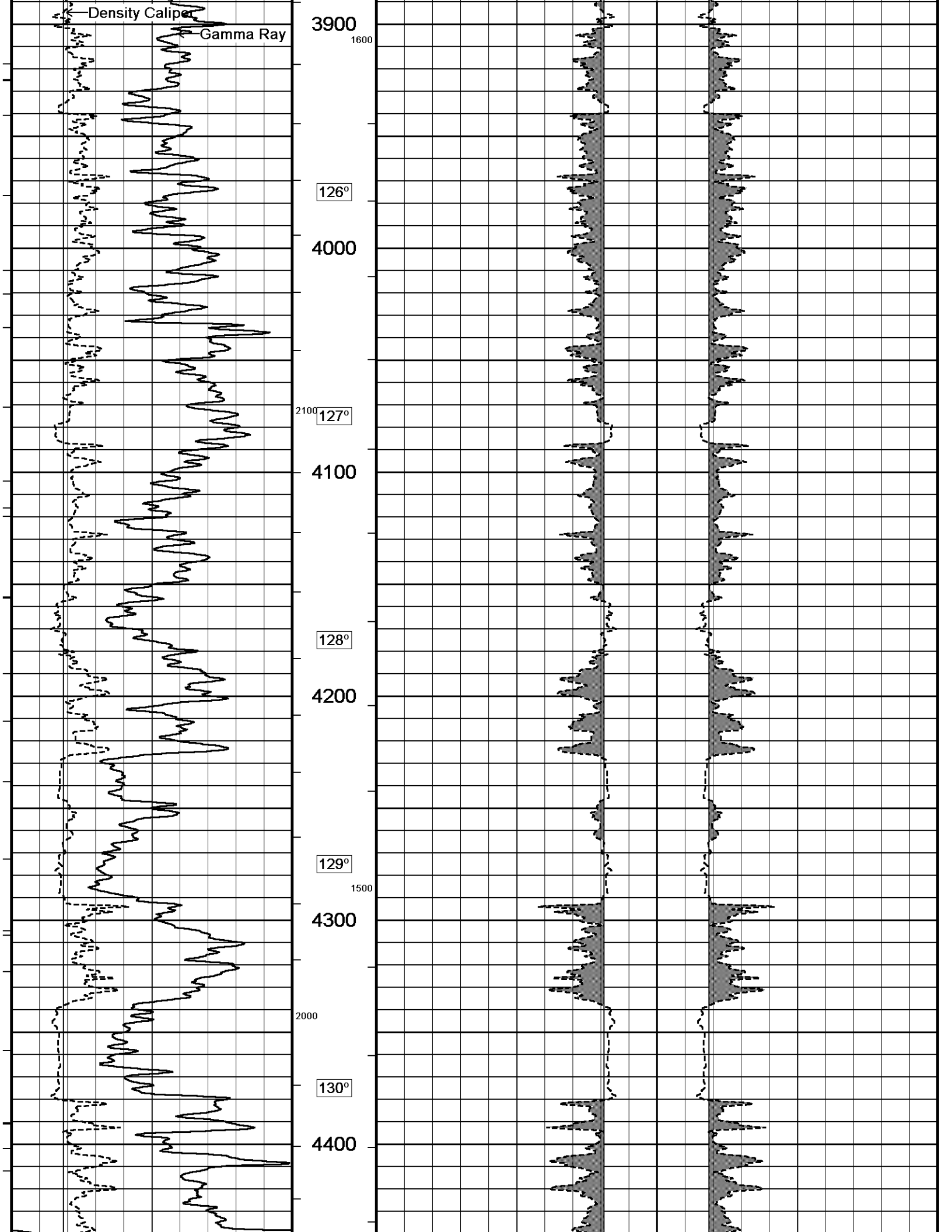
Bit Size →

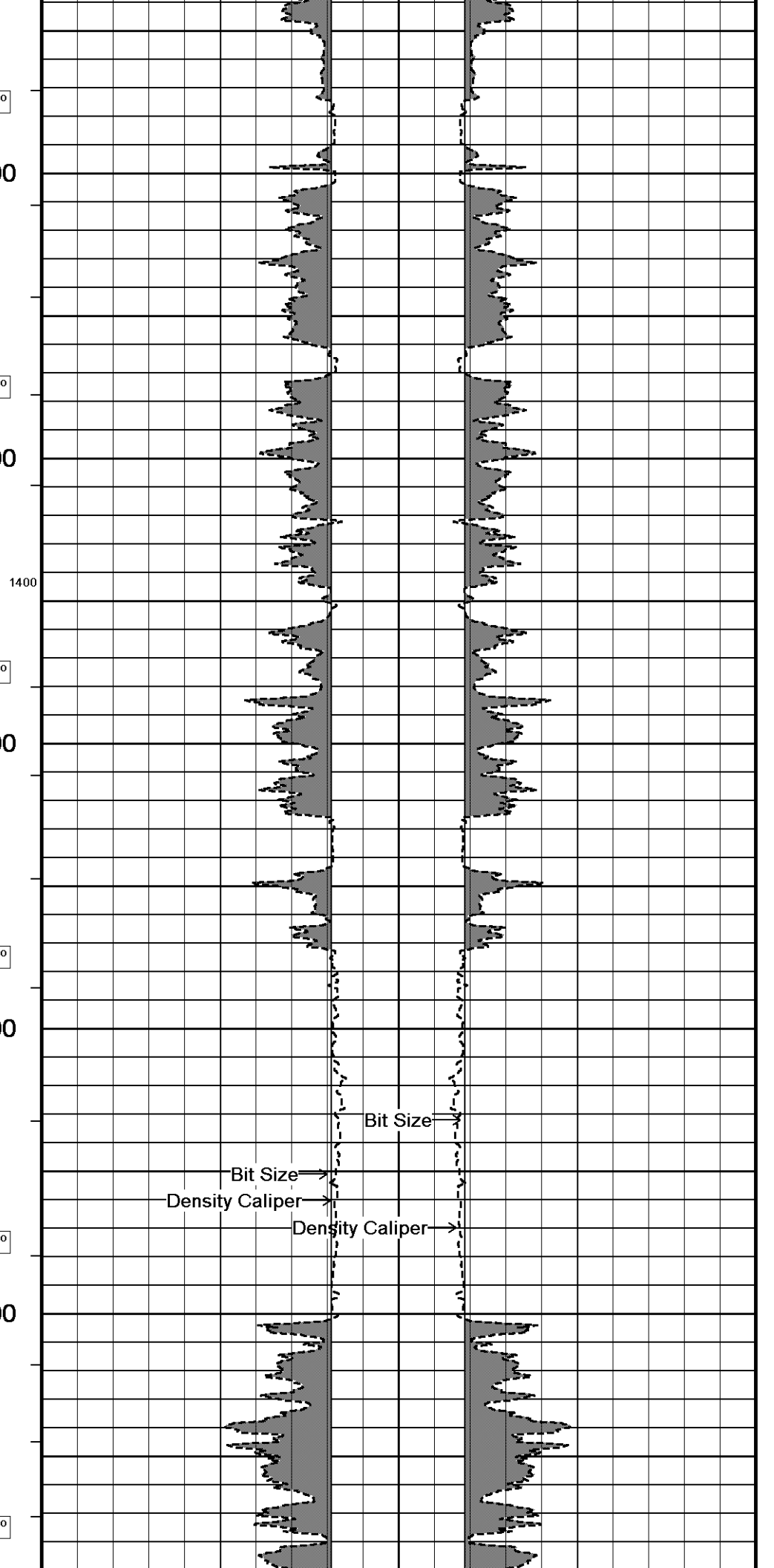
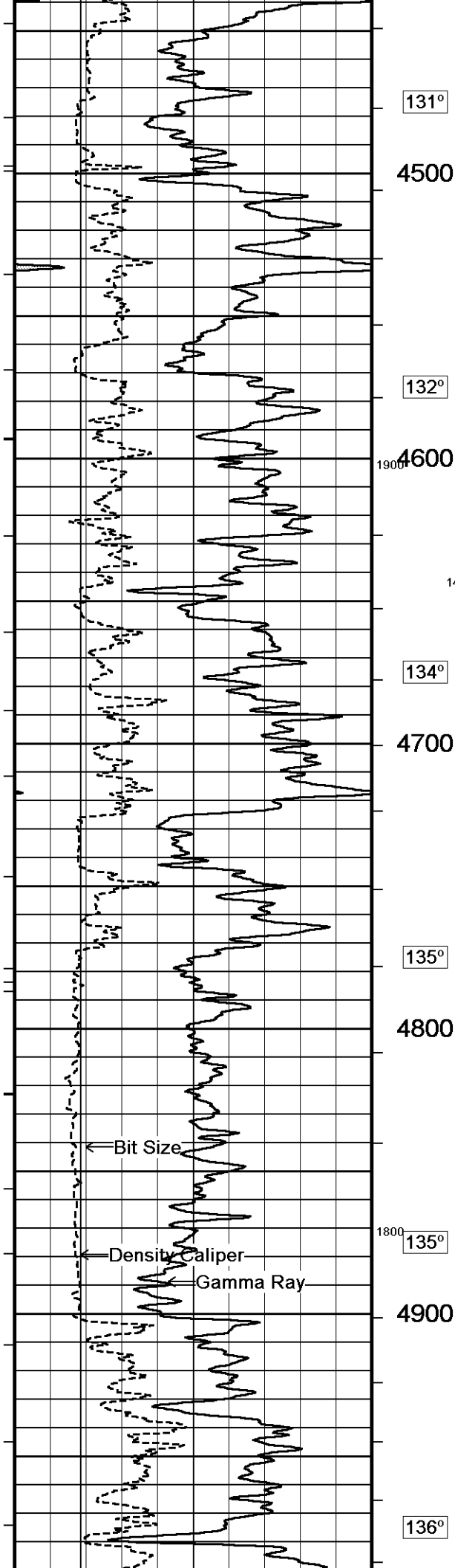
Bit Size →

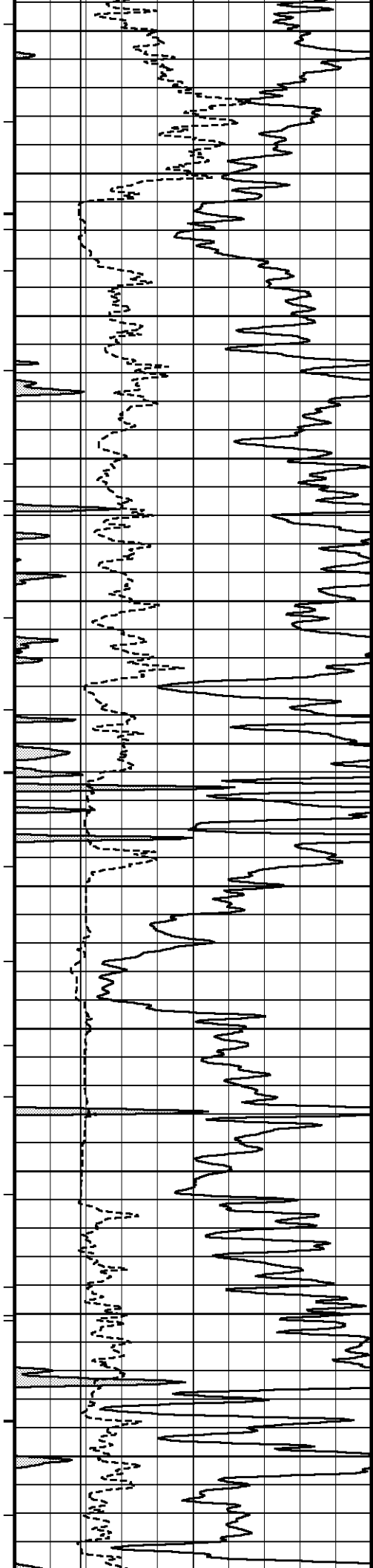
Density Caliper

Density Caliper

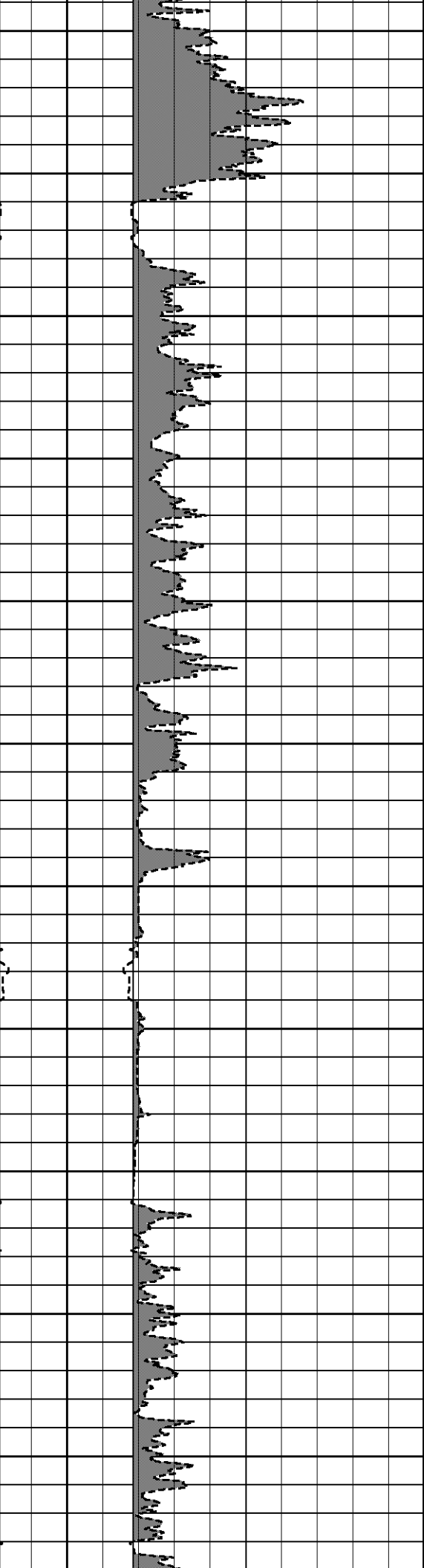
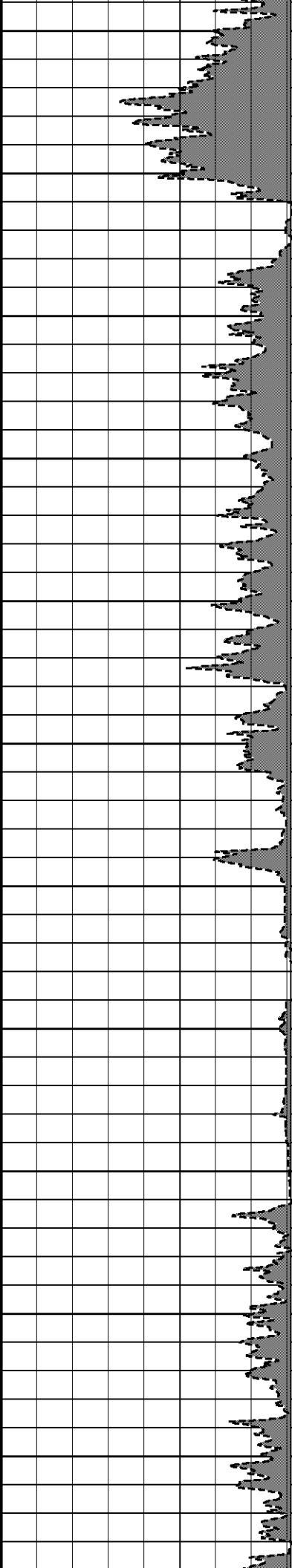


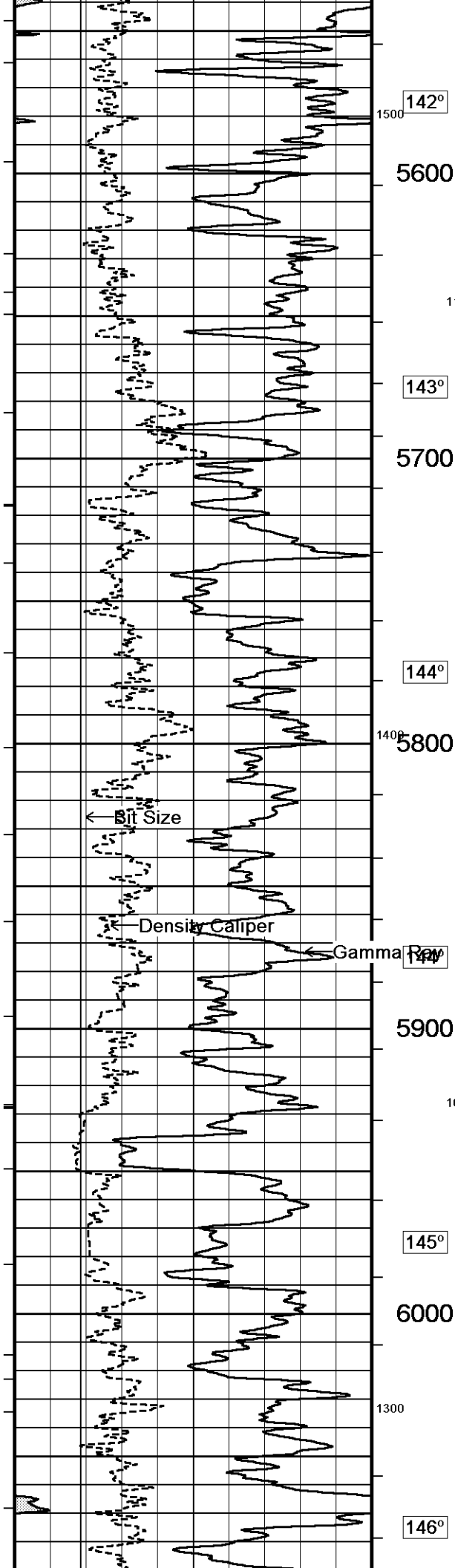






5000³⁰⁰
1700
138°
5100
138°
5200
139°
1200
5300
1600
141°
5400
141°
5500





142°

5600

1100

143°

5700

144°

5800

5900

1000

145°

6000

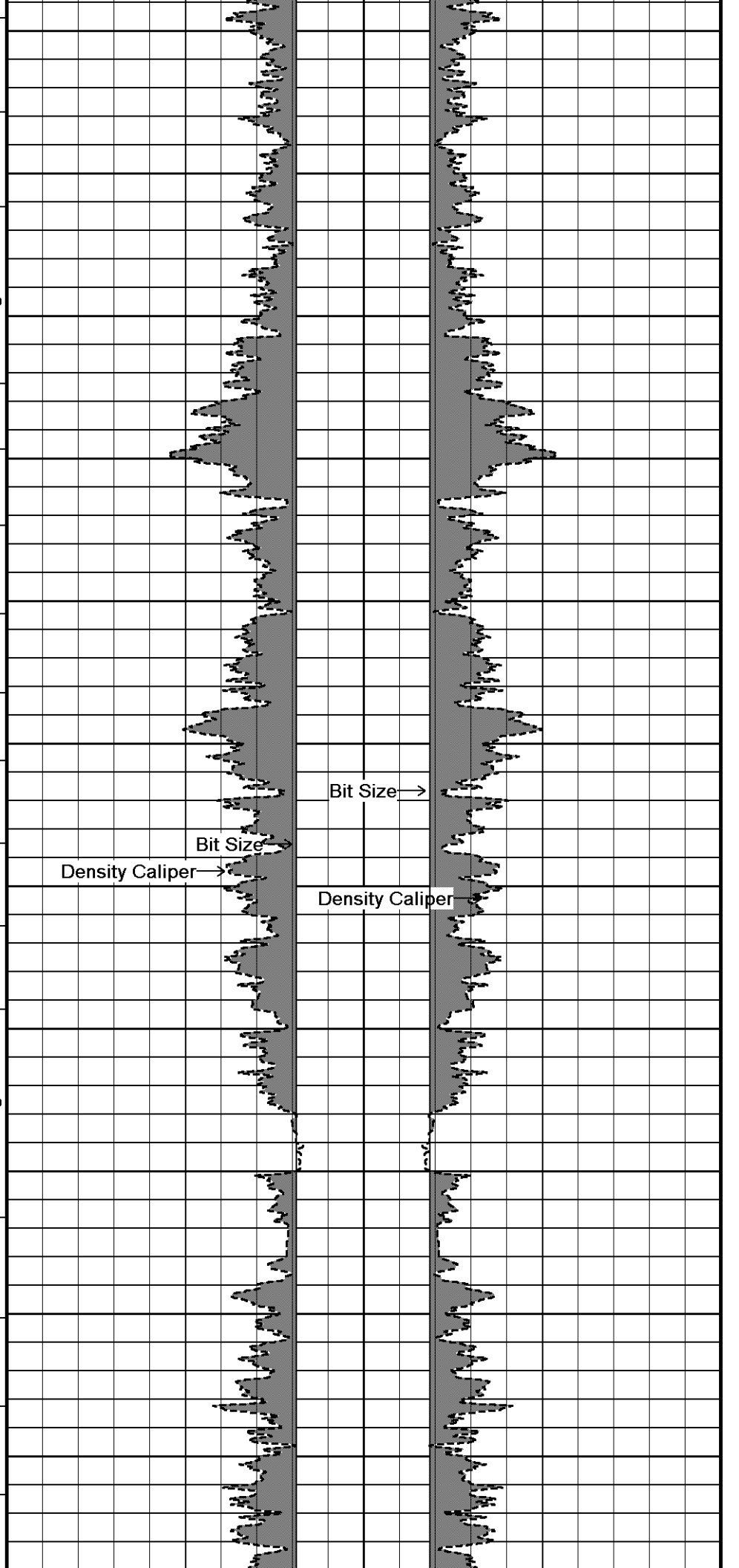
1300

146°

Bit Size

Density Caliper

Gamma Ray

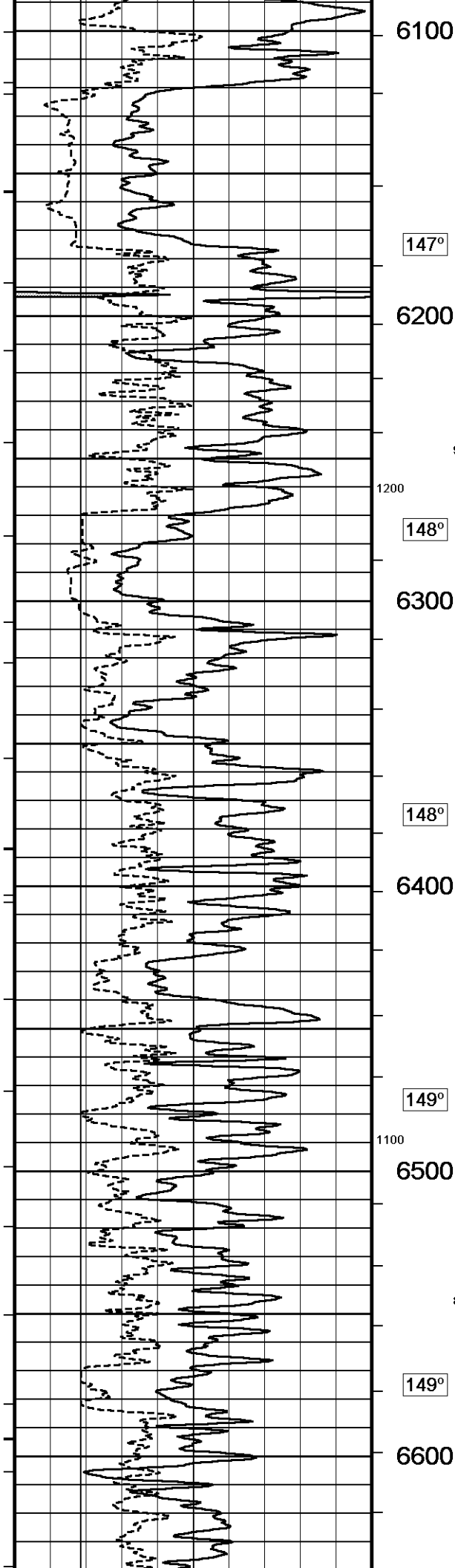


Bit Size

Bit Size

Density Caliper

Density Caliper



6100

147°

6200

900

1200

148°

6300

148°

6400

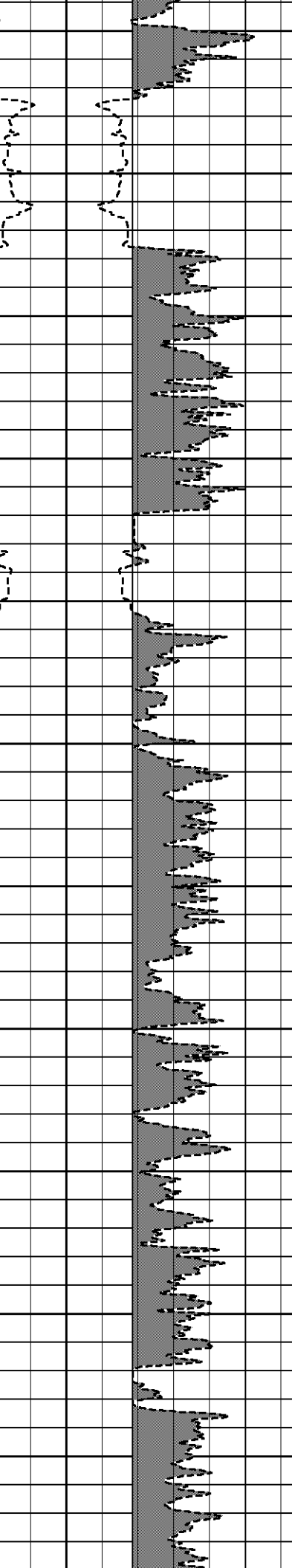
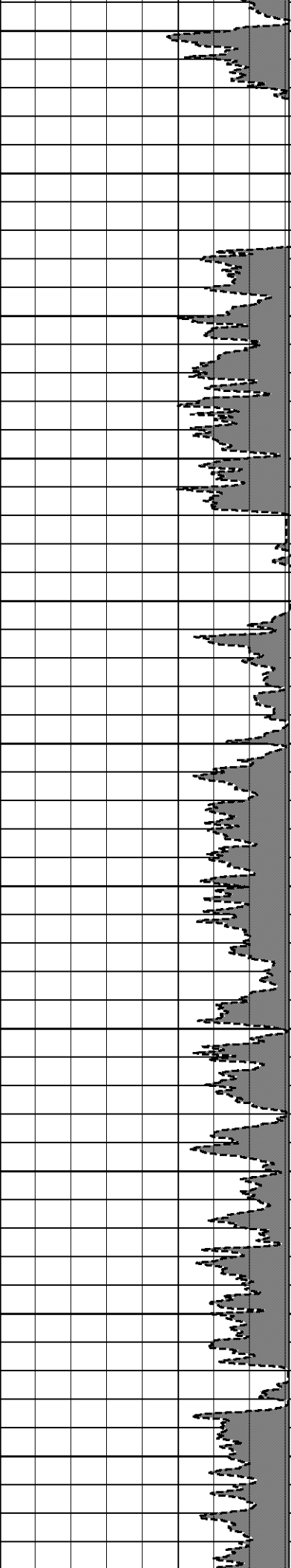
149°

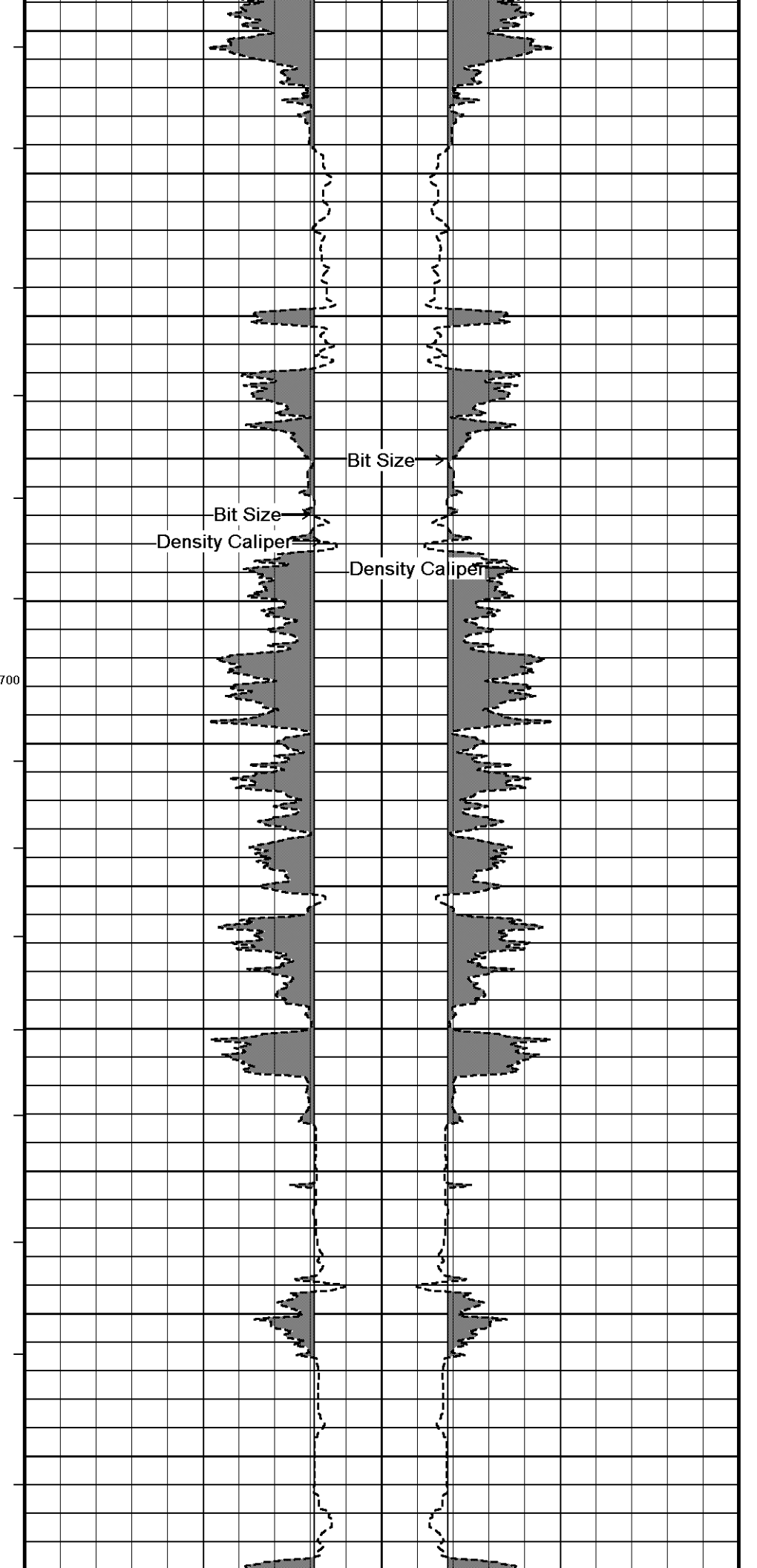
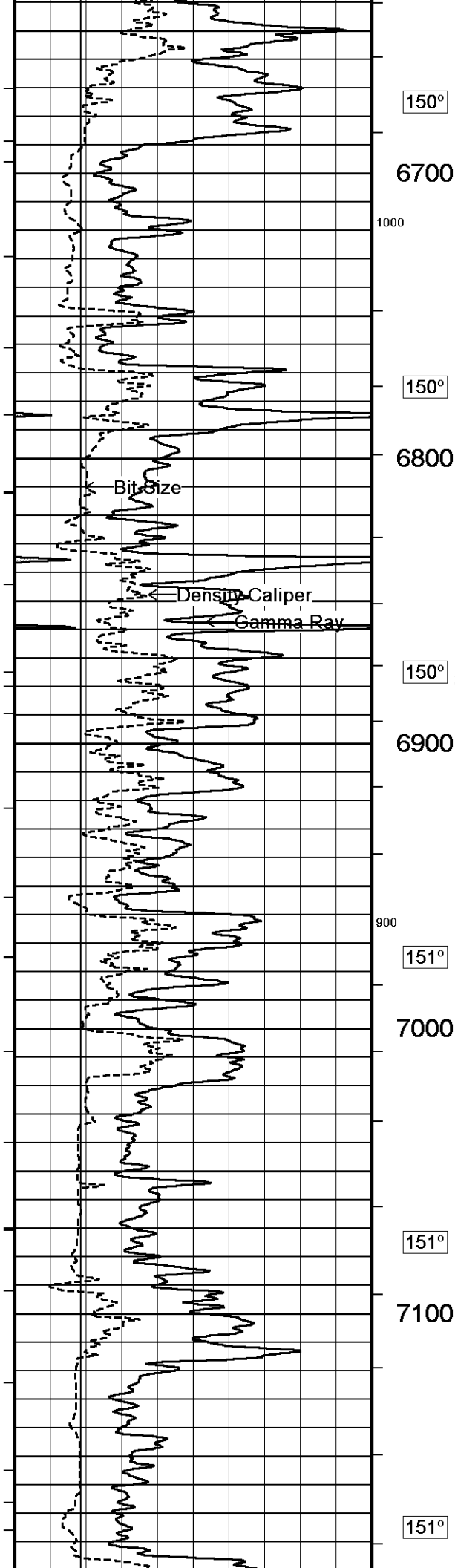
6500

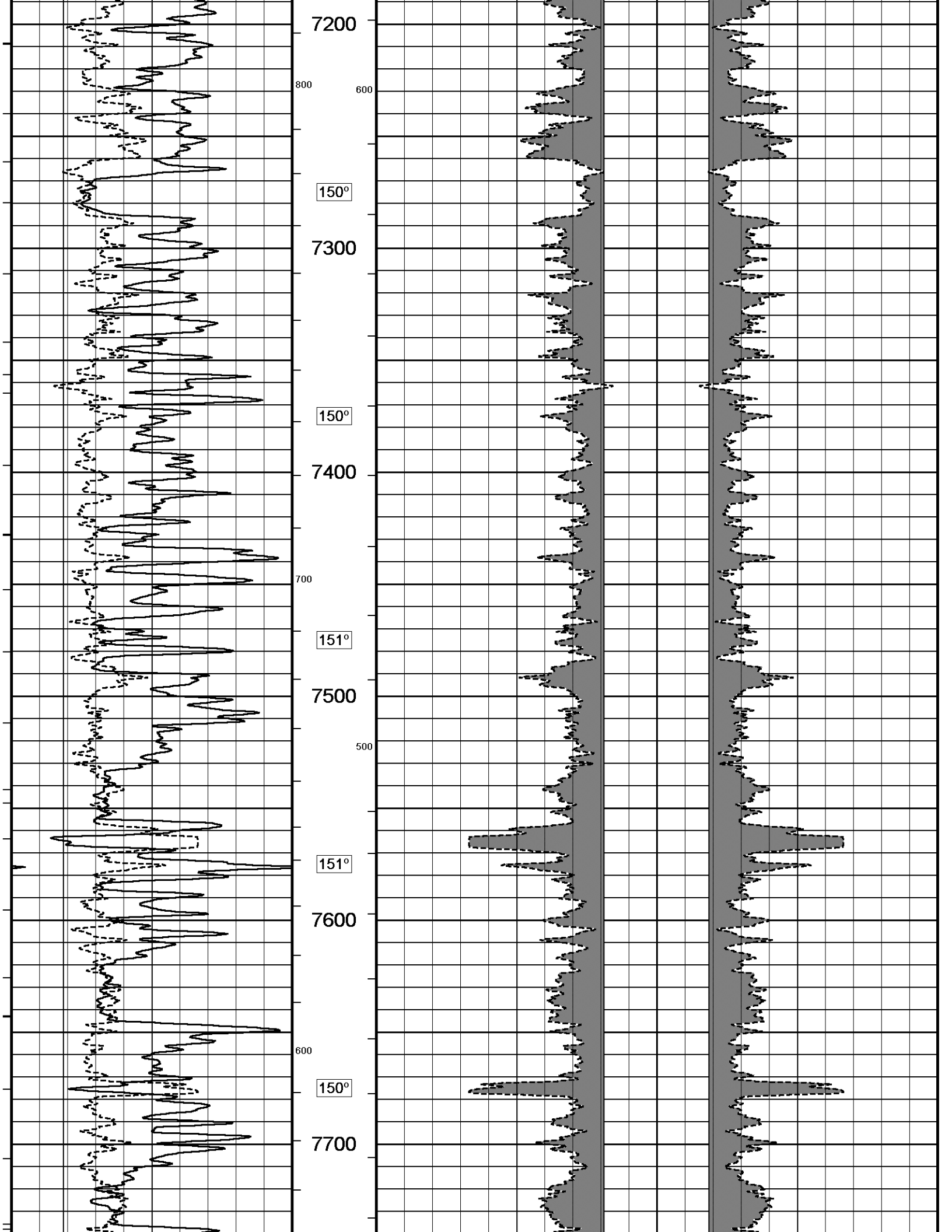
800

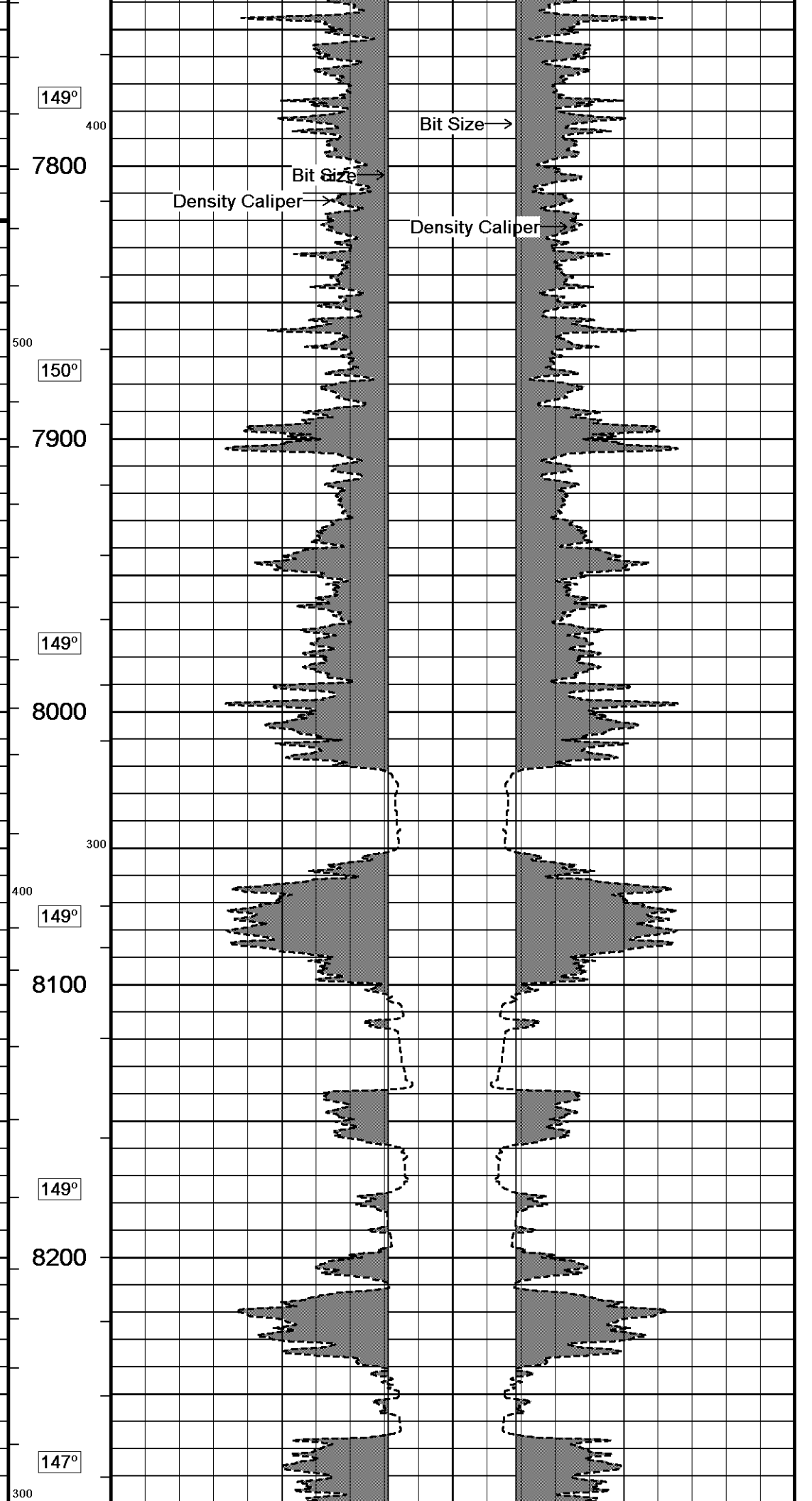
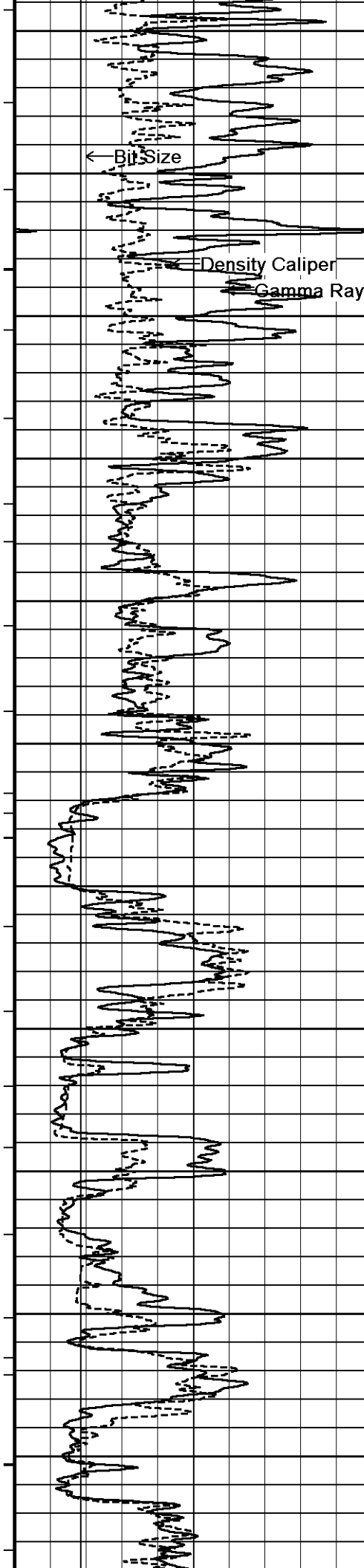
149°

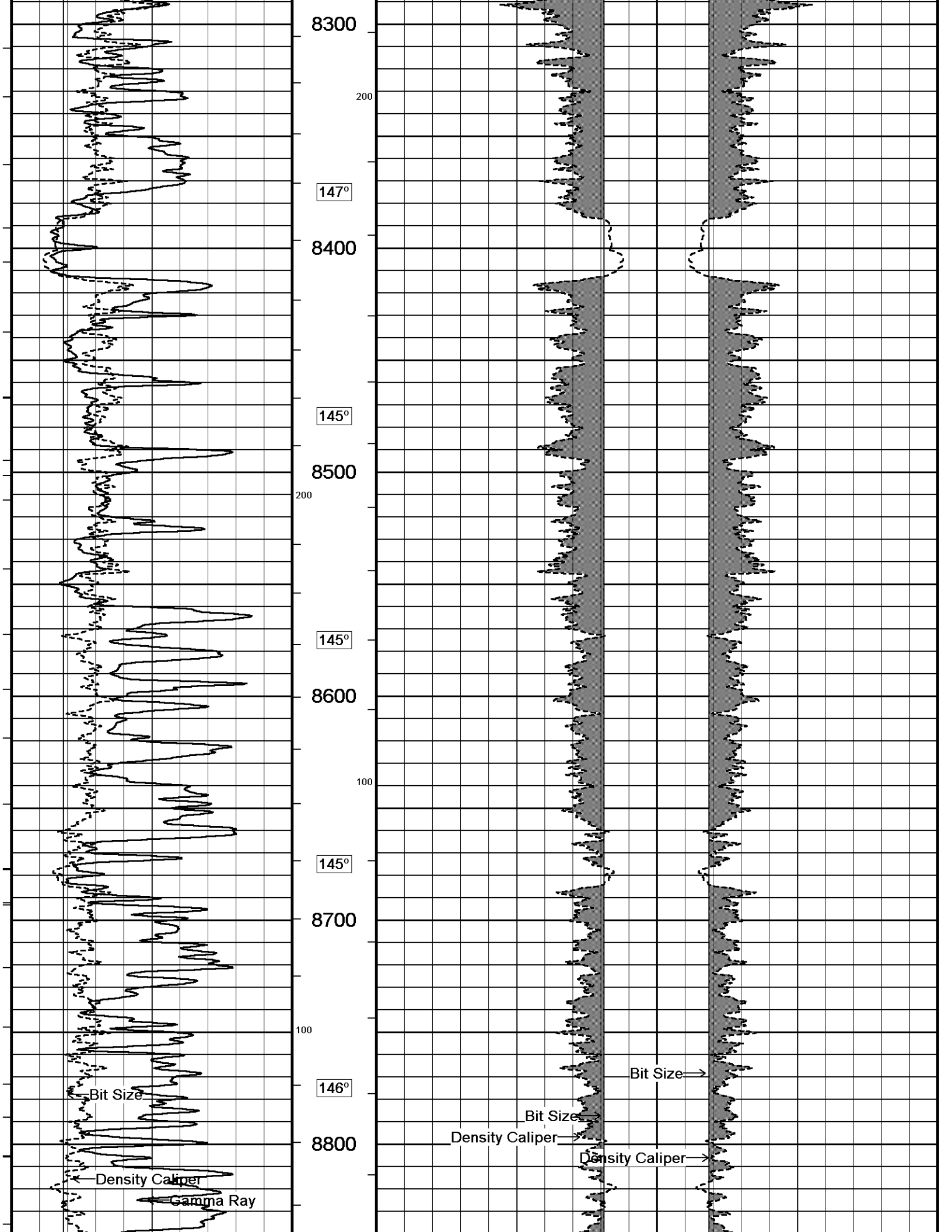
6600

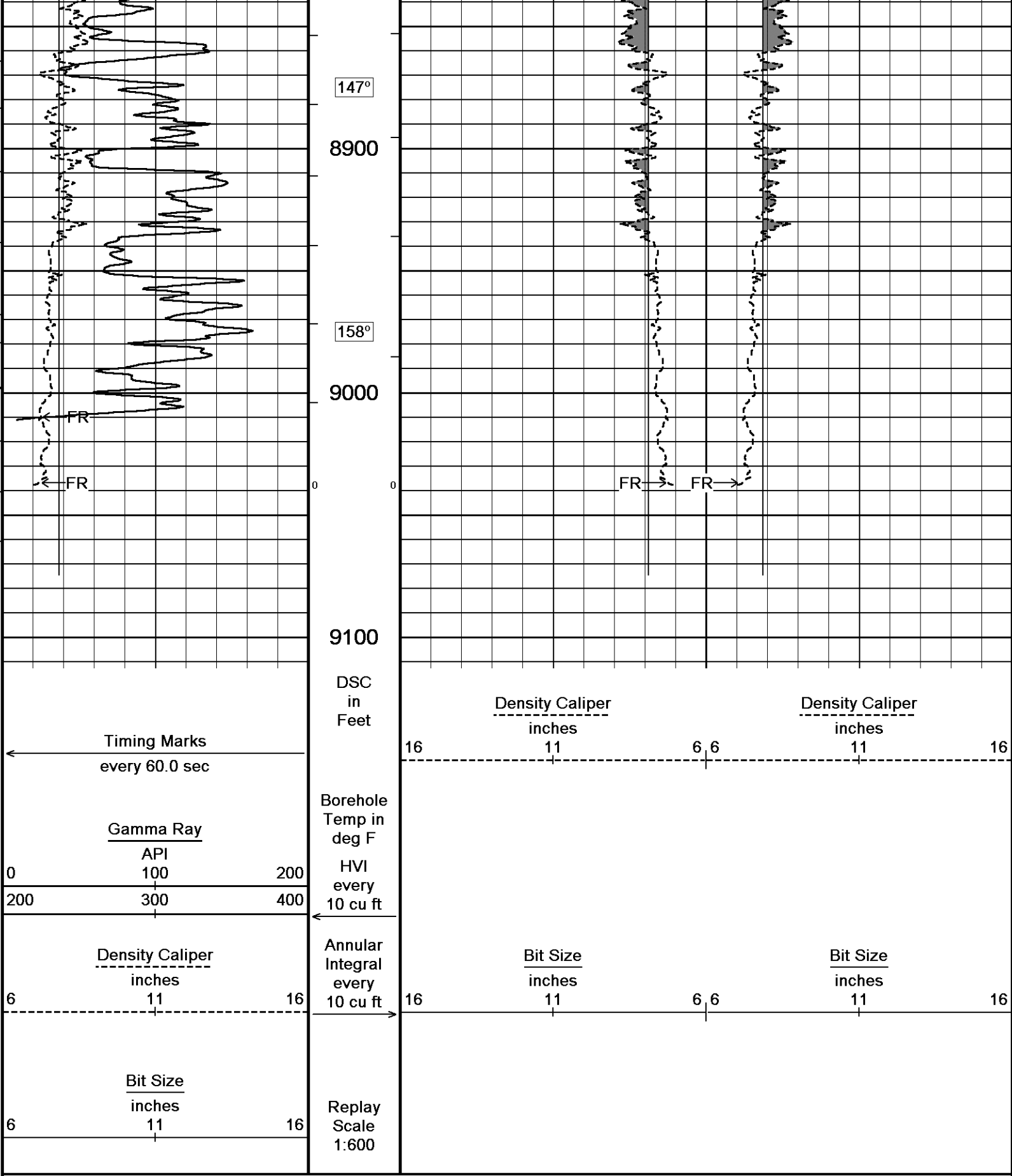












| | |
|-----------------|--------------------|
| WELL | JACKS DRAW UNIT 18 |
| FIELD | POWDER WASH |
| PROVINCE/COUNTY | MOFFAT |
| COUNTRY/STATE | U.S.A. / COLORADO |

| | | | | | |
|-------------------------|---------|------|---------------|---------|------|
| Elevation Kelly Bushing | 6599.00 | feet | First Reading | 9037.00 | feet |
| Elevation Drill Floor | 6598.00 | feet | Depth Driller | 9087.00 | feet |
| Elevation Ground Level | 6570.00 | feet | Depth Logger | 9087.00 | feet |



HOLE VOLUME
CALIPER
LOG

Weatherford®

