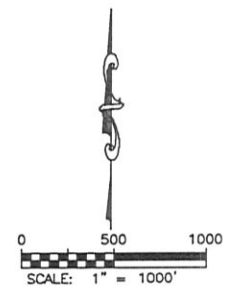
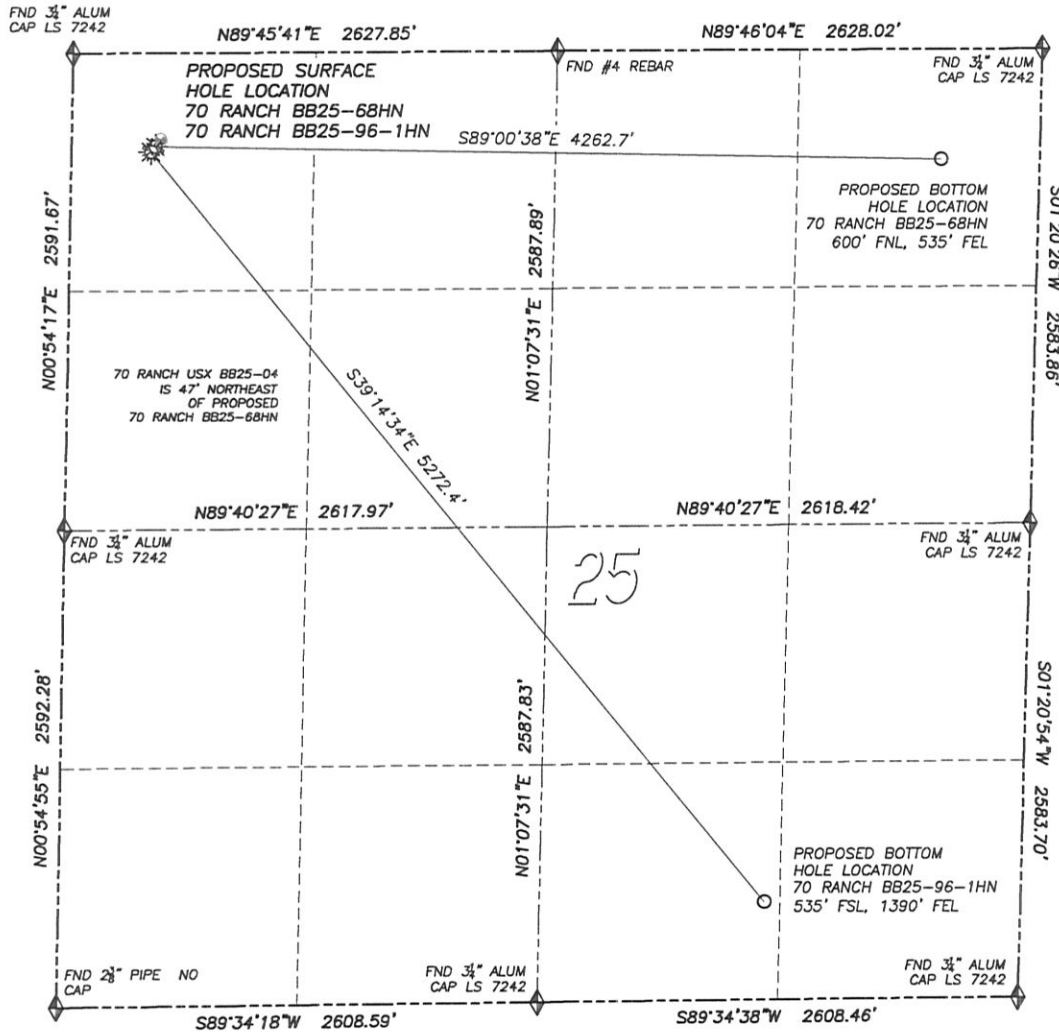








303 953 9841

MULTI-WELL PAD DIRECTIONAL LAYOUT
70 RANCH BB25-68HN & 70 RANCH BB25-96-1HN

SECTION 25, TOWNSHIP 5 NORTH, RANGE 63 WEST OF THE 6TH PRINCIPAL MERIDIAN



LEGEND

-  FOUND MONUMENT
 AS DESCRIBED
 PROPOSED WELL
 EXISTING WELL
 BOTTOM HOLE
 ABANDONED WELL

NAD 83 LATITUDE AND LONGITUDE

70 RANCH BB25-68HN SURFACE HOLE:

LATITUDE: N40.37601'
LONGITUDE: W104.39203'
ELEVATION: 4564'
FOOTAGE: 509' FNL, 453' FWL
PDOP: 1.7
QTR/QTR: NW4/NW4
PROP LINE: 453'± WEST

BOTTOM HOLE:

LATITUDE: N40.37580°
LONGITUDE: W104.37674°
FOOTAGE: 600' FNL, 535' FEL

NEAREST EXISTING WELL:

70 RANCH USX BB25-04 SURFACE HOLE
LATITUDE: N40.37611°
LONGITUDE: W104.39193°
ELEVATION: 4564'
47° NORTHEAST

NAD 83 LATITUDE AND LONGITUDE

70 RANCH BB25-96-1HN

SURFACE HOLE:
 LATITUDE: N40.37593"
 LONGITUDE: W104.39212"
 ELEVATION: 4564'
 FOOTAGE: 538' FNL, 430' FWL
 PDOP: 1.7
 QTR/QTR: NW4/NW4
 PROP LINE: 430'± WEST

BOTTOM HOLE:
 LATITUDE: N40.36472"
 LONGITUDE: W104.38015"
 FOOTAGE: 535' FSL, 1390' FEL

NEAREST EXISTING WELL:

70 RANCH USX BB25-04 SURFACE HOLE
LATITUDE: N40.37611°
LONGITUDE: W104.39193°
ELEVATION: 4564'
84° NORTHEAST

DALEY LAND SURVEYING, INC.

PARKER, CO. 80134

303 953 9841

MULTI-WELL PAD LOCATION DRAWING

70 RANCH BB25-68HN & 70 RANCH BB25-96-1HN

SECTION 25, TOWNSHIP 5 NORTH, RANGE 63 WEST OF THE 6TH PRINCIPAL MERIDIAN

