

1625 Broadway  
Suite 2000  
Denver, CO 80202  
  
Tel: 303.228.4000  
Fax: 303.228.4280  
www.nobleenergyinc.com



November 17, 2011

Colorado Oil and Gas Conservation Commission  
The Chancery Building  
1120 Lincoln Street, Suite 801  
Denver, CO 80203

Attn: Mr. David Neslin, Director

RE: 70 Ranch BB25-96-1HN  
Niobrara New Drill  
Township 5 North, Range 63 West, 6th P.M.  
Section 25: NW/4NW/4: 538' FNL & 430' FWL (Surface Location)  
Section 25: NW/4NW/4: 1154' FNL & 946' FWL (Beginning of Lateral)  
Section 25: SW/4SE/4: 535' FSL & 1390' FEL (Bottom Hole Location)  
Weld County, Colorado

Mr. Neslin:

Noble Energy, Inc. ("NEI") is planning to drill the captioned boundary well in accordance with the provisions of COGCC Rule 318A.e.

NEI's proposed wellbore spacing unit consists of the NW/4, SW/4NE/4, E/2SW/4, W/2SE/4, SE/4SE/4, Sec. 25, T5N, R63W, creating a 400-acre wellbore spacing unit for the Niobrara formation. NEI is the only owner within the proposed wellbore spacing unit, therefore NEI hereby attests that no notice letters are required under COGCC Rule 318A(l).e.(6).

Enclosed are copies of the following documents to assist you in your review and approval of NEI's proposed APD for the captioned well:

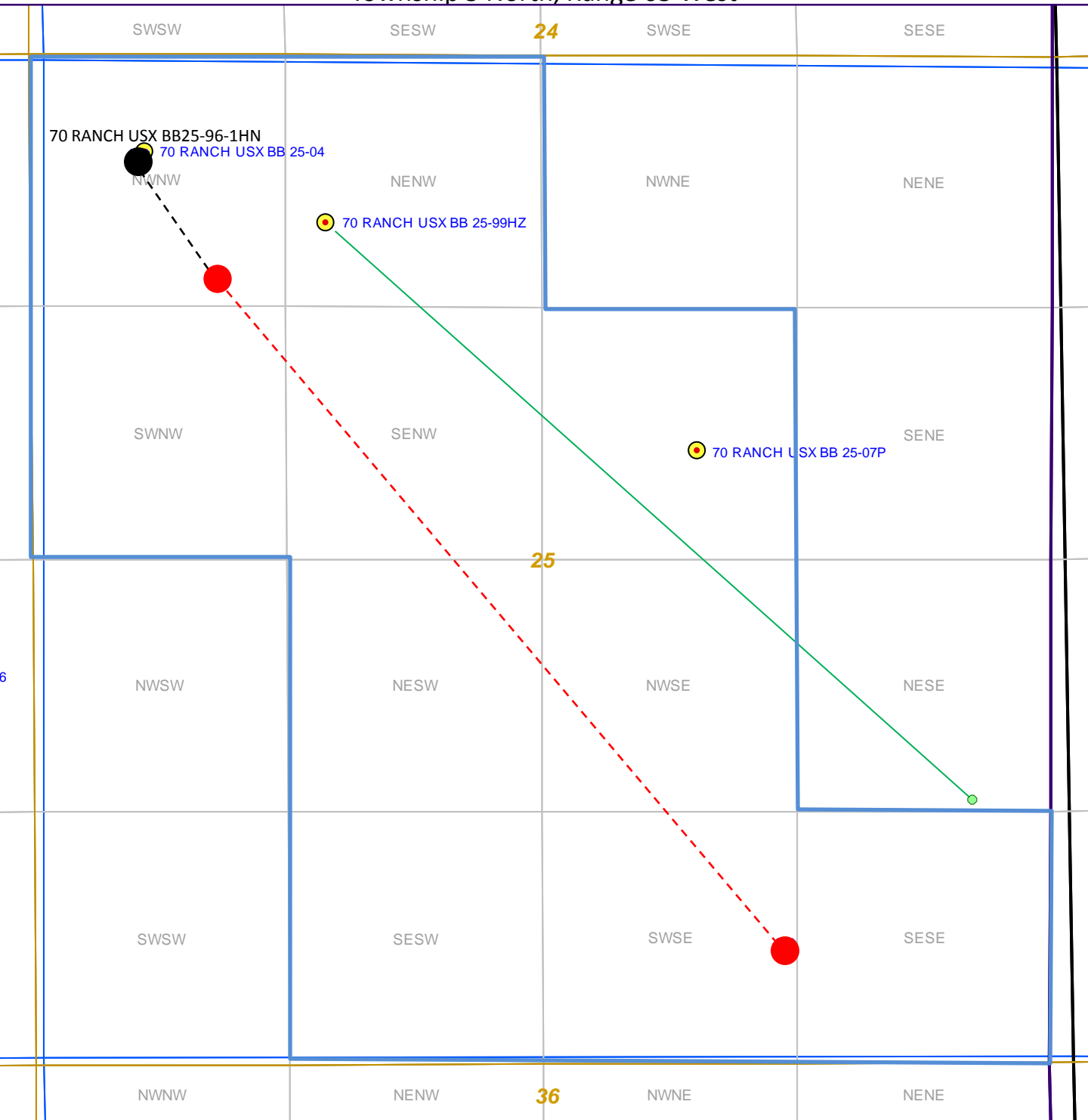
- Map & plat illustrating proposed wellbore spacing unit.

Thank you for your attention to the enclosed. NEI respectfully requests that the COGCC review the enclosed information and approve the Application for Permit to Drill the captioned well.

Sincerely,

Justin Garrett  
Regulatory Specialist  
Noble Energy Inc.

70 RANCH USX BB25-96-1HN  
Noble Energy, Inc  
NW/4, SW/4NE/4, E/2SW/4, W/2SE/4, SE/4SE/4 of Section 25  
Township 5 North, Range 63 West



Legend



Proposed 400 acre spacing unit

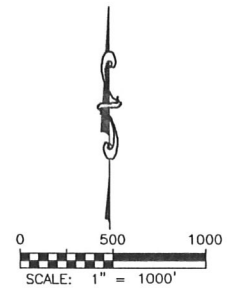
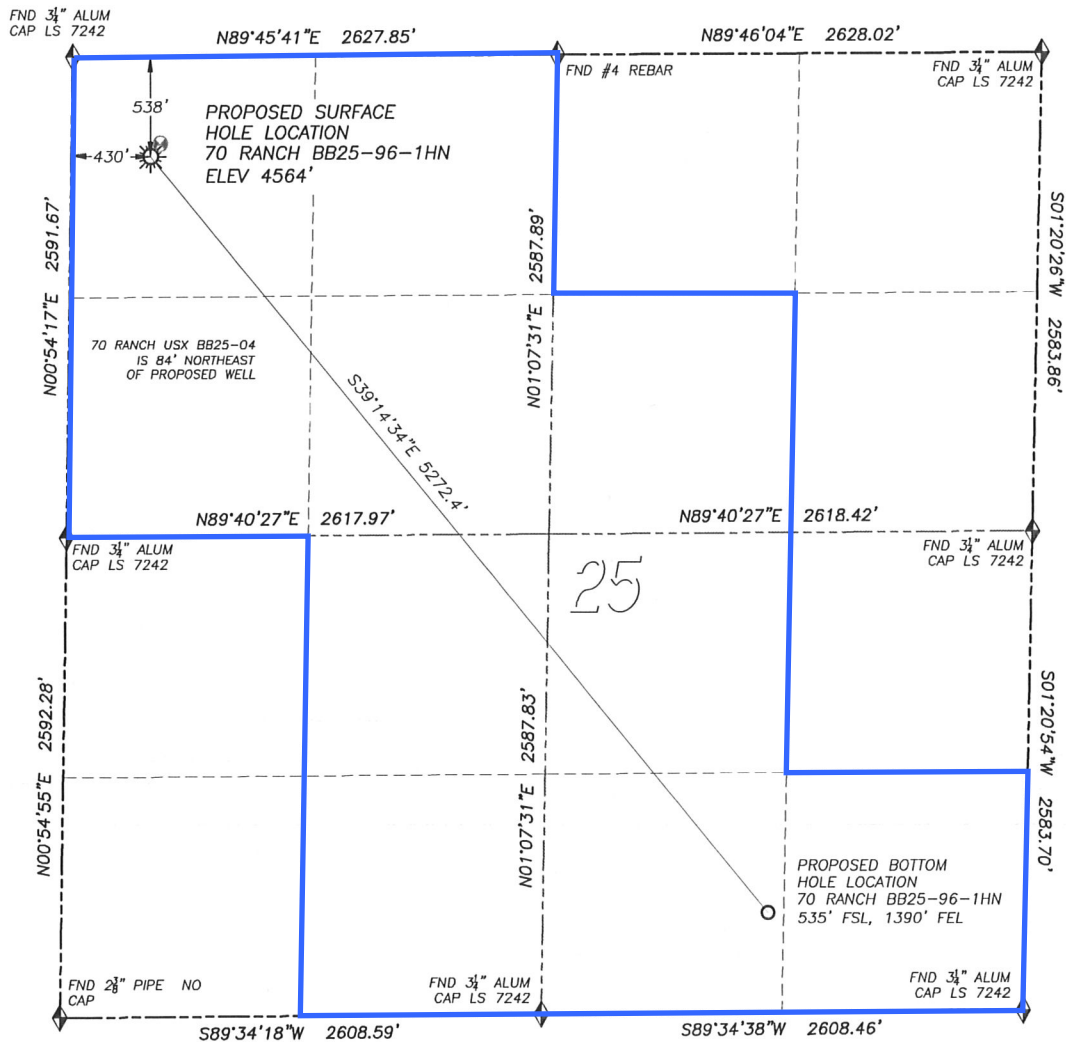


Proposed Bottom Hole Location

# WELL LOCATION CERTIFICATE

## 70 RANCH BB25-96-1HN

SECTION 25, TOWNSHIP 5 NORTH, RANGE 63 WEST OF THE 6TH PRINCIPAL MERIDIAN

**LEGEND**

- FOUND MONUMENT AS DESCRIBED
- PROPOSED WELL
- EXISTING WELL
- BOTTOM HOLE
- ABANDONED WELL

**NAD 83 LATITUDE AND LONGITUDE**

70 RANCH BB25-96-1HN

SURFACE HOLE:

LATITUDE: N40.37593°

LONGITUDE: W104.39212°

ELEVATION: 4564'

FOOTAGE: 538' FNL, 430' FWL

PDOP: 1.7

QTR/QTR: NW4/NW4

PROP LINE: 430'± WEST

BOTTOM HOLE:

LATITUDE: N40.36472°

LONGITUDE: W104.38015°

FOOTAGE: 535' FSL, 1390' FEL

**NEAREST EXISTING WELL:**

70 RANCH USX BB25-04 SURFACE HOLE

LATITUDE: N40.37611°

LONGITUDE: W104.39193°

ELEVATION: 4564'

84' NORTHEAST

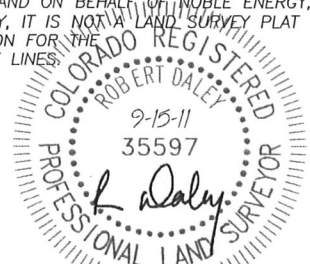
IN ACCORDANCE WITH A REQUEST FROM SCOTT LEWIS OF NOBLE ENERGY INC., DALEY LAND SURVEYING, INC. HAS DETERMINED THE SURFACE LOCATION OF THE 70 RANCH BB25-96-1HN WELL TO BE 538' FNL, 430' FWL, AS MEASURED AT NINETY (90) DEGREES FROM THE SECTION LINES OF SECTION 25, TOWNSHIP 5 NORTH, RANGE 63 WEST OF THE 6TH PRINCIPAL MERIDIAN, WELD COUNTY, COLORADO. THE BOTTOM HOLE LOCATION, PROVIDED BY THE CLIENT, IS TO BE 535' FSL, 1390' FEL.

I HEREBY CERTIFY THAT THIS WELL LOCATION CERTIFICATE WAS PREPARED BY ME OR UNDER MY DIRECT SUPERVISION, THAT THE WORK WAS COMPLETED ON 9/13/2011 FOR AND ON BEHALF OF NOBLE ENERGY, INC., AND THAT THIS MAP DOES NOT REPRESENT A BOUNDARY SURVEY, IT IS NOT A LAND SURVEY PLAT OR AN IMPROVEMENT SURVEY PLAT AND IT IS NOT TO BE RELIED UPON FOR THE ESTABLISHMENT OF FENCE, BUILDING OR OTHER FUTURE IMPROVEMENT LINES.

**NOTES:**

- 1) BEARINGS FOR THIS MAP ARE ASSUMED AND BASED UPON GPS OBSERVATIONS MADE BETWEEN MONUMENTS LOCATED AT THE NORTHWEST CORNER AND WEST QUARTER CORNER OF SECTION 25, T.5N., R.63W.
- 2) HORIZONTAL DATUM IS NAD83.
- 3) VERTICAL DATUM IS NAVD88 AND ORIGINATES FROM THE LOCAL C.O.R.S. NETWORK, UTILIZING THE GEOID09 MODEL.
- 4) SEE LOCATION DRAWING FOR VISIBLE IMPROVEMENTS WITHIN 400' OF PROPOSED DISTURBED AREA.
- 5) SURFACE USE: PASTURE.

NOTICE: According to Colorado law you MUST commence any legal action based upon any defect in this W.L.C. within three years after you first discover such defect. In no event may any action based upon any such defect in this W.L.C. be commenced more than ten years from the date of the certification shown herein.



FOR AND ON BEHALF OF  
DALEY LAND SURVEYING, INC.  
Robert Daley, PLS 35597