

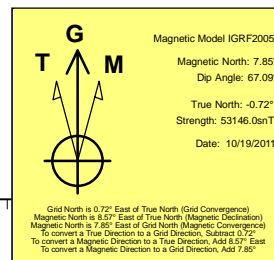
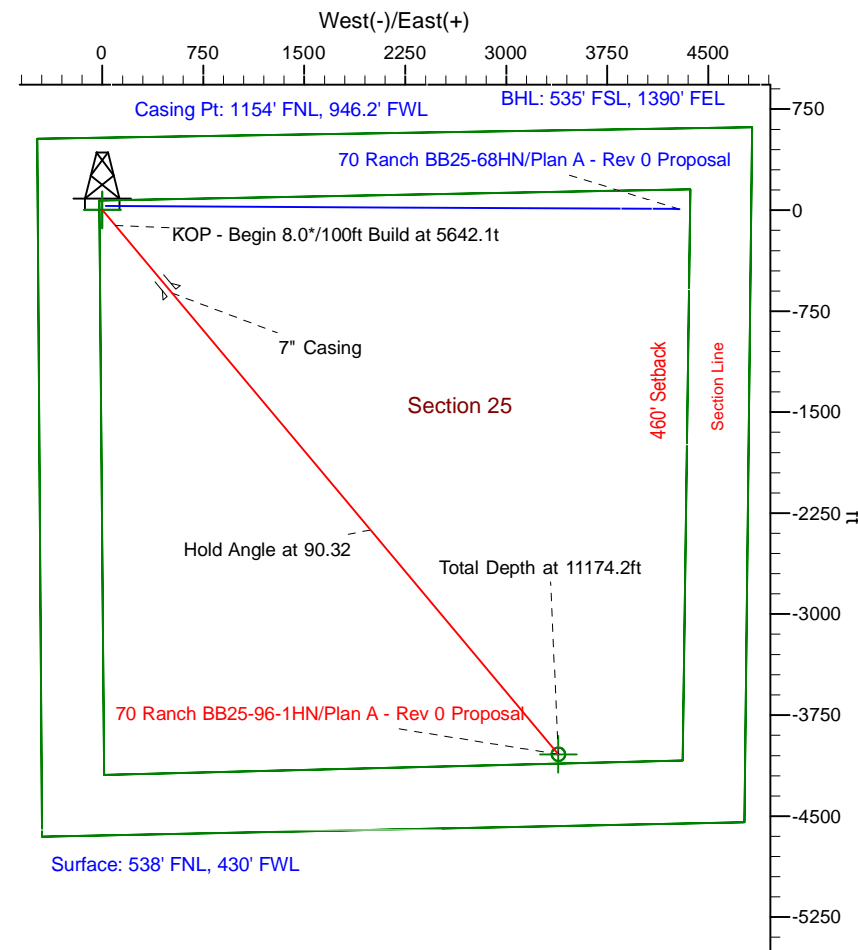
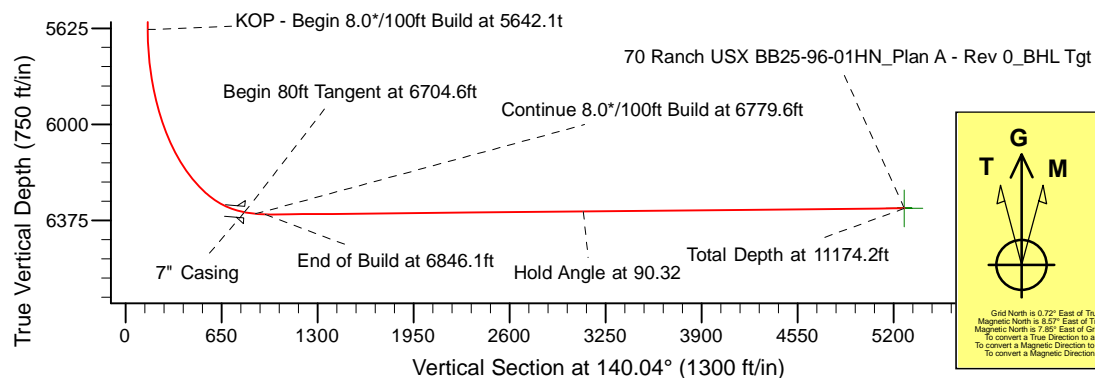
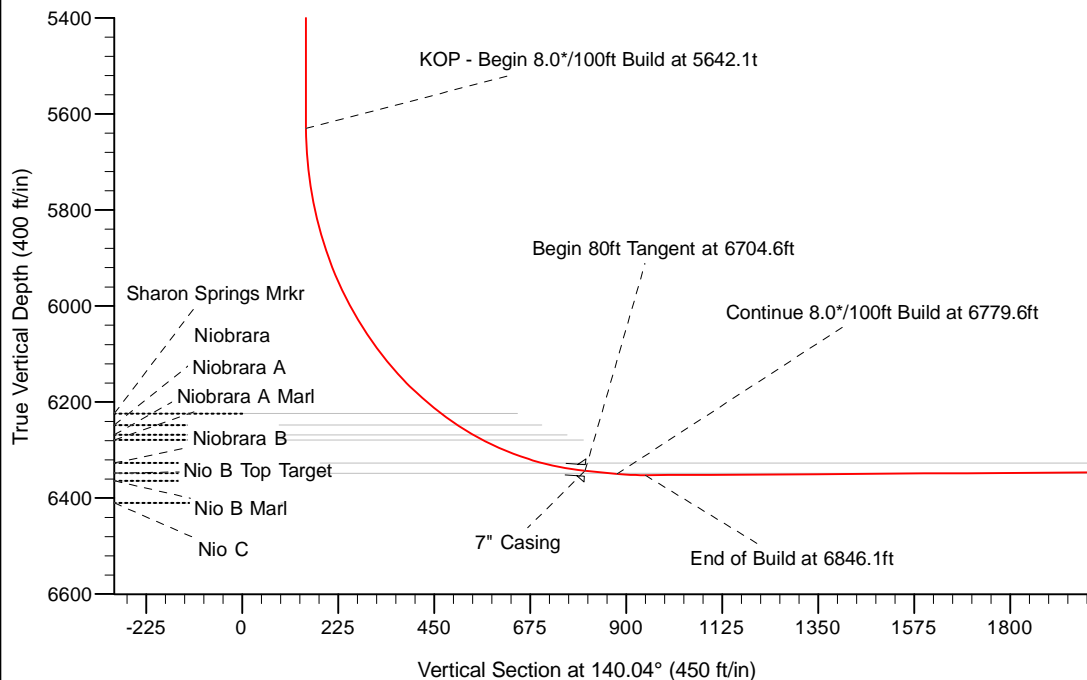
Project: Weld County Colorado (NAD 83)
 Site: Sec.25, T5N, R63W
 Well: 70 Ranch BB25-96-1HN
 Wellbore: Plan A - Rev 0 (PERMITTING PLAN ONLY)
 Design: Plan A - Rev 0 Proposal

Noble Energy

HALLIBURTON
 Consulting

SECTION DETAILS

Sec	MD	Inc	Azi	TVD	+N/-S	+E/-W	Dleg	TFace	VSec	Target
1	0.0	0.00	0.00	0.0	0.0	0.0	0.00	0.00	0.0	
2	2500.0	0.00	0.00	2500.0	0.0	0.0	0.00	0.00	0.0	
3	2979.3	11.98	140.03	2975.8	-38.3	32.1	2.50	140.03	49.9	
4	3220.3	11.98	140.03	3211.6	-76.6	64.2	0.00	0.00	100.0	
5	3699.6	0.00	0.00	3687.4	-114.9	96.3	2.50	180.00	149.9	
6	5642.1	0.00	0.00	5629.9	-114.9	96.3	0.00	0.00	149.9	
7	6704.6	85.00	140.04	6343.4	-616.0	516.2	8.00	140.04	803.7	
8	6779.6	85.00	140.04	6349.9	-673.3	564.2	0.00	0.00	878.4	
9	6846.1	90.32	140.04	6352.6	-724.2	606.8	8.00	0.00	944.8	
10	1174.2	90.32	140.04	6328.5	-4041.7	3386.4	0.00	107.86	5272.9	70 Ranch USX BB25-96-01HN_Plan A - Rev 0_BHL Tgt



WELL DETAILS: 70 Ranch BB25-96-1HN (NAD 83 Geodetic System)

Ground Level: 4564.0
 Northing Easting Latitude Longitude
 421149.08 1008480.85 40° 22' 33.348 N 104° 23' 31.632 W

Plan: Plan A - Rev 0 Proposal (70 Ranch BB25-96-1HN/Plan A - Rev 0 (PERMITTING PLAN ONLY))

Created By: Erika Cuauero Garcia Date: 21:51, October 25 2011

OK to submit with 2A as per Noble Drilling
10/26/2011 15:58